

1801 Broadway  
Suite 500  
Denver, Colorado 80202



Callie Fiddes  
Regulatory Compliance Specialist  
Tel: 303.398.0550  
E-mail: cfiddes@gwogco.com

8/1/2016

Colorado Oil and Gas Conservation Commission  
1120 Lincoln Street, Suite 801  
Denver, Colorado 80203

RE: **Proposed Wellbore Spacing Unit**  
Schneider HD 11-262HN  
Niobrara New Drill

SWSW Section 7  
Township 4N, Range 66W, 6th P.M.  
Weld County, Colorado

Dear Director:

Great Western Operating Company, LLC is planning to drill the above captioned well in accordance with the provisions of COGCC Rule 318A.e.

Great Western proposed wellbore spacing unit consists of:

- **S2 Sec 11, S2 Sec 12**
- **640 acres**

The 30 day notification time period has passed and we have not received any objections to such well locations or proposed spacing unit, therefore Great Western hereby requests the Director to approve the above mentioned well. Great Western Operating Company, LLC respectfully requests that the COGCC review the enclosed map illustrating the proposed wellbore spacing unit.

Respectfully,

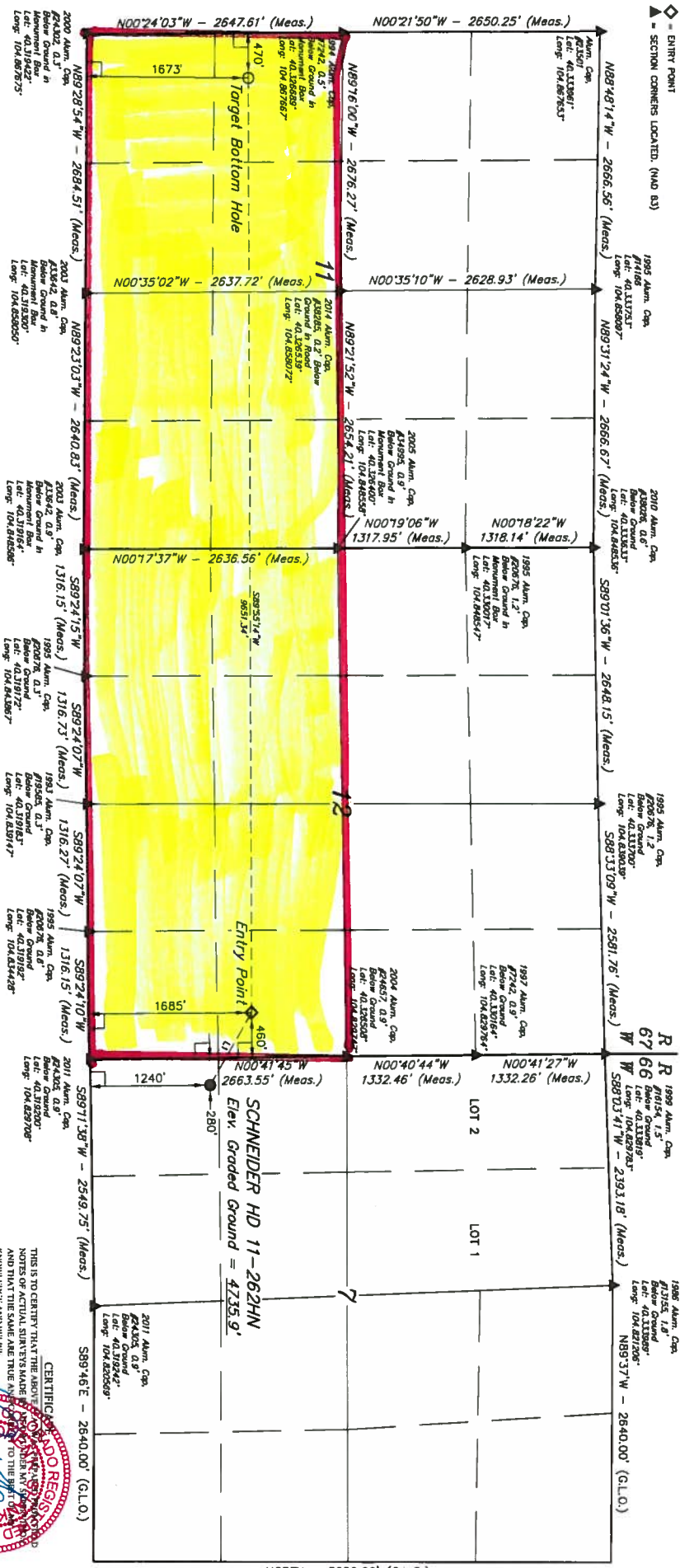
*Callie Fiddes*

Callie Fiddes  
Regulatory Compliance Specialist  
Great Western Operating Company, LLC

T4N, R66W, 6th P.M.

LEGEND:

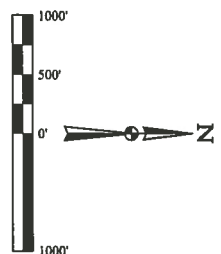
- 90° SYMBOL
- PROPOSED WELLHEAD
- TARGET BOTTOM HOLE
- ENTRY POINT
- SECTION CORNERS LOCATED (NAD 83)



LINE TABLE		
LINE	DIRECTION	LENGTH
L1	N89°40'19"W	861.58'

BASIS OF BEARINGS  
BASIS OF ELEVATION  
USGS COGNITIVE BASE NETWORK CONTROL STATION  
DESIGNATION: VERMILYAN DOTS DATA SHEET LISTS THE  
NAVD 88 ELEVATION AS BEING 5026 FEET.

UNTAH  
Corporate Office 85 South 200 East  
Vernal, UT 84678 (435) 785-1817



NAD 83 SURFACE LOCATION		NAD 83 ENTRY POINT		NAD 83 TARGET BOTTOM HOLE	
LATITUDE = 40°19'31.38" (40.32466)	LATITUDE = 40°19'31.38" (40.32466)	LATITUDE = 40°19'31.38" (40.32466)	LATITUDE = 40°19'31.38" (40.32466)	LATITUDE = 40°19'31.38" (40.32466)	LATITUDE = 40°19'31.38" (40.32466)
LONGITUDE = 104°49'43.40" (104.82872)	LONGITUDE = 104°49'43.40" (104.82872)	LONGITUDE = 104°49'43.40" (104.82872)	LONGITUDE = 104°49'43.40" (104.82872)	LONGITUDE = 104°49'43.40" (104.82872)	LONGITUDE = 104°49'43.40" (104.82872)
NAD 83 ENTRY POINT		NAD 83 TARGET BOTTOM HOLE			
LATITUDE = 40°19'31.38" (40.32466)	LATITUDE = 40°19'31.38" (40.32466)	LATITUDE = 40°19'31.38" (40.32466)	LATITUDE = 40°19'31.38" (40.32466)		
LONGITUDE = 104°49'43.40" (104.82872)	LONGITUDE = 104°49'43.40" (104.82872)	LONGITUDE = 104°49'43.40" (104.82872)	LONGITUDE = 104°49'43.40" (104.82872)		

GREAT WESTERN OPERATING COMPANY  
SCHNEIDER HD 11-262HN  
SW 1/4 SW 1/4, SECTION 7, T4N, R66W, 6th P.M.  
WELD COUNTY, COLORADO  
SURVEYED BY: K.B. WEIMER, J.S.  
DRAWN BY: K.B.  
SCALE: 1" = 1000'  
WELL LOCATION PLAN

REV: 11-16-16 K.B. (TBI CHANER)  
THIS IS TO CERTIFY THAT THE ABOVE  
NOTES OF ACTUAL SURVEY MADE  
AND THAT THE SAME ARE TRUE AND  
KNOWLEDGE AND BELIEF.

NORTH - 5280.00' (G.L.O.)