

1801 Broadway  
Suite 500  
Denver, Colorado 80202



Callie Fiddes  
Regulatory Compliance Specialist  
Tel: 303.398.0550  
E-mail: cfiddes@gwogco.com

8/1/2016

Colorado Oil and Gas Conservation Commission  
1120 Lincoln Street, Suite 801  
Denver, Colorado 80203

RE: **Proposed Wellbore Spacing Unit**  
Schneider HD 11-299HN  
Niobrara New Drill

SWSW Section 7  
Township 4N, Range 66W, 6th P.M.  
Weld County, Colorado

Dear Director:

Great Western Operating Company, LLC is planning to drill the above captioned well in accordance with the provisions of COGCC Rule 318A.e.

Great Western proposed wellbore spacing unit consists of:

- **S2 Sec 11, S2 Sec 12**
- **640 acres**

The 30 day notification time period has passed and we have not received any objections to such well locations or proposed spacing unit, therefore Great Western hereby requests the Director to approve the above mentioned well. Great Western Operating Company, LLC respectfully requests that the COGCC review the enclosed map illustrating the proposed wellbore spacing unit.

Respectfully,

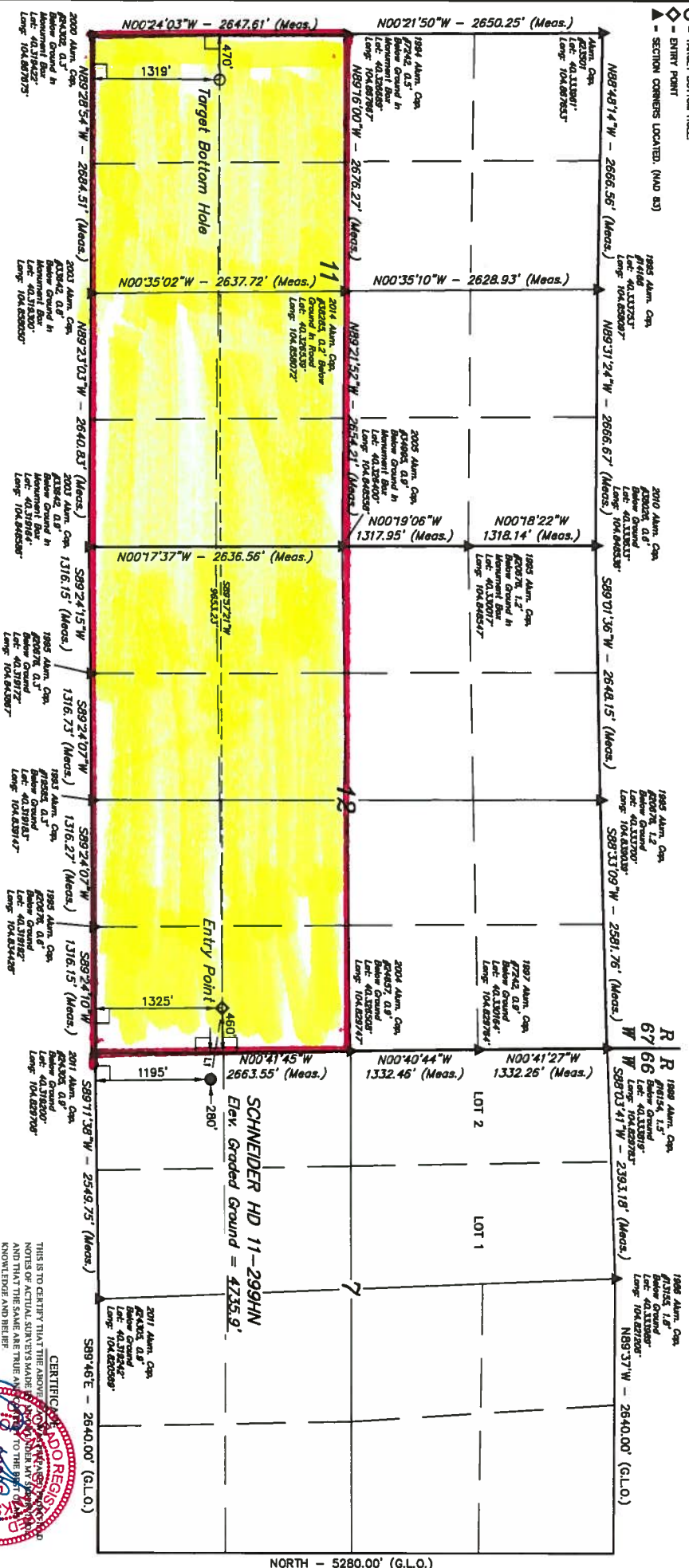
*Callie Fiddes*

Callie Fiddes  
Regulatory Compliance Specialist  
Great Western Operating Company, LLC

# LEGEND:

- - PROPOSED WELLHEAD.
- - TARGET BOTTOM HOLE.
- △ - ENTRY POINT.
- ▲ - SECTION CORNERS LOCATED. (NAD 83)

T4N, R66W, 6th P.M.



| LINE TABLE |             |         |
|------------|-------------|---------|
| LINE       | DIRECTION   | LENGTH  |
| L1         | N89°43'50"W | 791.34' |

PROOF - 1.2

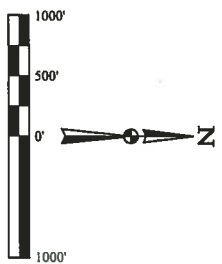
| NAD 83 GROUNDFACE LOCATION              |  | NAD 83 ENTRY POINT                     |  | NAD 83 TARGET BOTTOM HOLE              |  |
|---|--|--|--|--|--|
| LATITUDE = 40°19'20.94" (40.322483)     | LATITUDE = 40°19'22.20" (40.322833)    | LATITUDE = 40°19'22.20" (40.322833)    | LATITUDE = 40°19'22.20" (40.322833)    | LATITUDE = 40°19'22.20" (40.322833)    | LATITUDE = 40°19'22.20" (40.322833)    |
| LONGITUDE = 104°49'41.40" (104.8281722) | LONGITUDE = 104°49'51.56" (104.831318) | LONGITUDE = 104°49'51.56" (104.831318) | LONGITUDE = 104°49'51.56" (104.831318) | LONGITUDE = 104°49'51.56" (104.831318) | LONGITUDE = 104°49'51.56" (104.831318) |
| LATITUDE = 40°19'21.00" (40.322500)     | LATITUDE = 40°19'22.26" (40.322850)    | LATITUDE = 40°19'22.26" (40.322850)    | LATITUDE = 40°19'22.26" (40.322850)    | LATITUDE = 40°19'22.26" (40.322850)    | LATITUDE = 40°19'22.26" (40.322850)    |
| LONGITUDE = 104°49'41.50" (104.828154)  | LONGITUDE = 104°49'51.06" (104.830850) | LONGITUDE = 104°49'51.06" (104.830850) | LONGITUDE = 104°49'51.06" (104.830850) | LONGITUDE = 104°49'51.06" (104.830850) | LONGITUDE = 104°49'51.06" (104.830850) |

GREAT WESTERN OPERATING COMPANY  
 SCHNEIDER HD 11-2991N  
 SW 1/4 SW 1/4, SECTION 7, T4N, R66W, 6th P.M.  
 WELD COUNTY, COLORADO  
 SURVEYED BY: K.B. WEIMER, J.S.  
 DRAWN BY: K.B.  
 SCALE: 1" = 100'

REV: 11-16-16 K.B. (NAME, EP & TBI CHANGE)

CERTIFICATE OF RECORD  
 THIS IS TO CERTIFY THAT THE ABOVE  
 NOTES OF ACTUAL SURVEY MADE  
 AND THAT THE SAME ARE TRUE AND  
 KNOWN BY THE SURVEYOR  
 STATE OF COLORADO  
 11-16-16

BASIS OF BEARINGS  
 BASIS OF ELEVATION  
 USGS COOPERATIVE BASE NETWORK CONTROL STATION,  
 DESIGNATION "VERMILYEA" NGDS DATA SHEET LISTS THE  
 NAVD 88 ELEVATION AS BEING 5026 FEET.



UEIS, LLC  
 Corporate Office: 5534th 390 East  
 Vernal, UT 84078 • (435) 789-1017