

REV: 1 01-05-17 J.M.C. (ROAD ROUTE CHANGE)

#### LEGEND:

 PROPOSED LOCATION



#### GREAT WESTERN OPERATING COMPANY

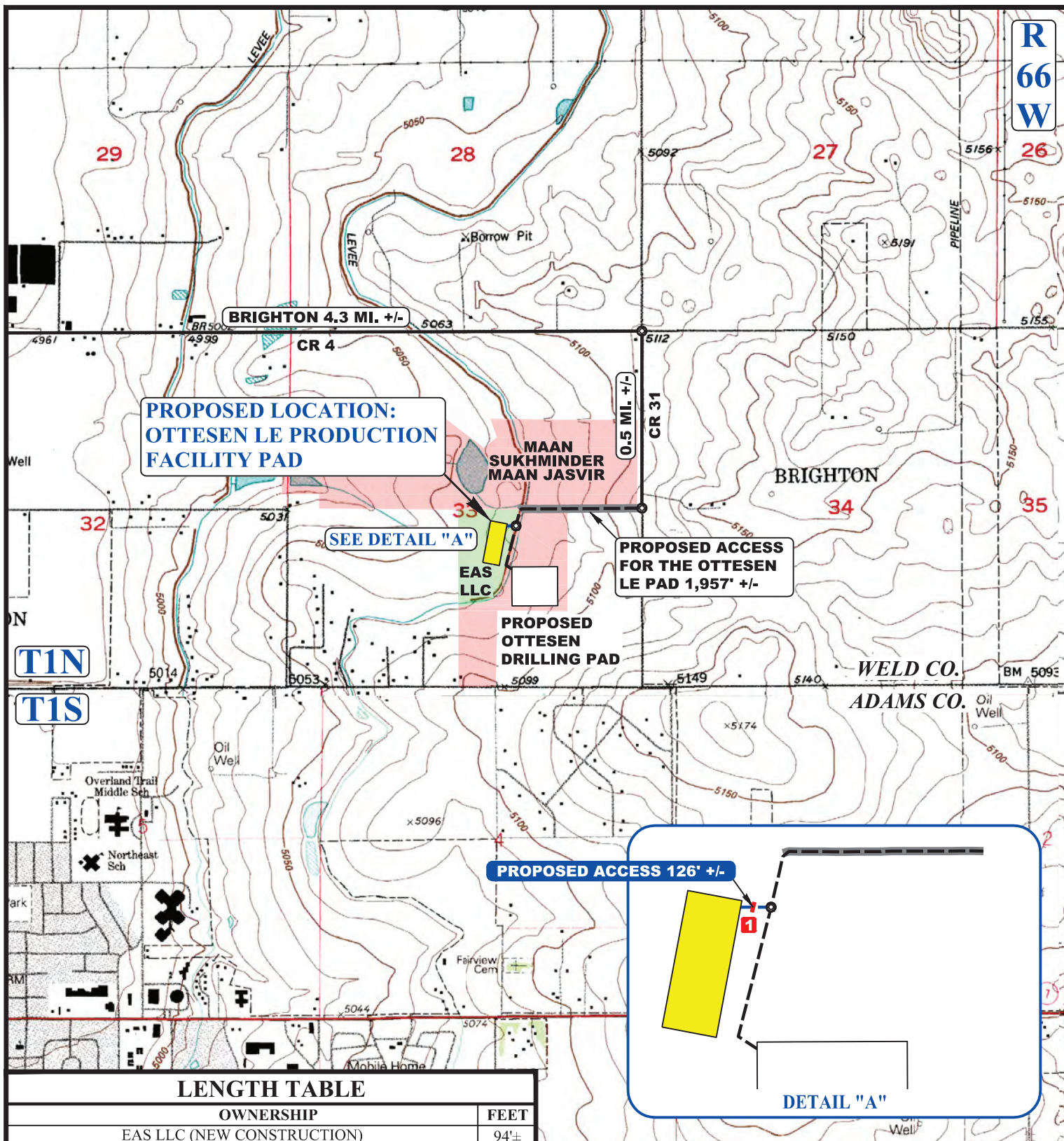
OTTESSEN LE PRODUCTION FACILITY PAD  
NW 1/4 SE 1/4, SECTION 33, T1N, R66W, 6th P.M.  
WELD COUNTY, COLORADO



UELS, LLC  
Corporate Office \* 85 South 200 East  
Vernal, UT 84078 \* (435) 789-1017

SURVEYED BY	D.N., C.M.	06-30-16	SCALE
DRAWN BY	M.F.D.	07-08-16	1 : 100,000
ACCESS ROAD MAP			TOPO A





### LENGTH TABLE

OWNERSHIP	FEET
EAS LLC (NEW CONSTRUCTION)	94'±
MAAN SUKHMINDER MAAN JASVIR (NEW CONSTRUCTION)	32'±

REV: 1 01-05-17 J.M.C. (ROAD ROUTE CHANGE)

NOTE: PARCEL DATA SHOWN HAS BEEN OBTAINED FROM VARIOUS SOURCES AND SHOULD BE USED FOR MAPPING, GRAPHIC AND PLANNING PURPOSES ONLY. NO WARRANTY IS MADE BY UINAH ENGINEERING AND LAND SURVEYING (UELS) FOR ACCURACY OF THE PARCEL DATA.

### LEGEND:

- EXISTING ROAD
- PROPOSED ROAD
- EXISTING 2-TRACK
- PROPOSED ROAD (SERVICING OTHER WELLS)
- 1 INSTALL CULVERT SIZED AS REQUESTED BY CANAL COMPANY

**UELS, LLC**

Corporate Office \* 85 South 200 East  
Vernal, UT 84078 \* (435) 789-1017



### GREAT WESTERN OPERATING COMPANY

**OTTESEN LE PRODUCTION FACILITY PAD**  
NW 1/4 SE 1/4, SECTION 33, T1N, R66W, 6th P.M.  
WELD COUNTY, COLORADO

SURVEYED BY	D.N., C.M.	06-30-16	SCALE
DRAWN BY	M.F.D.	07-08-16	1 : 24,000
<b>ACCESS ROAD MAP</b>			<b>TOPO B</b>