

LEGEND:

PROPOSED LOCATION



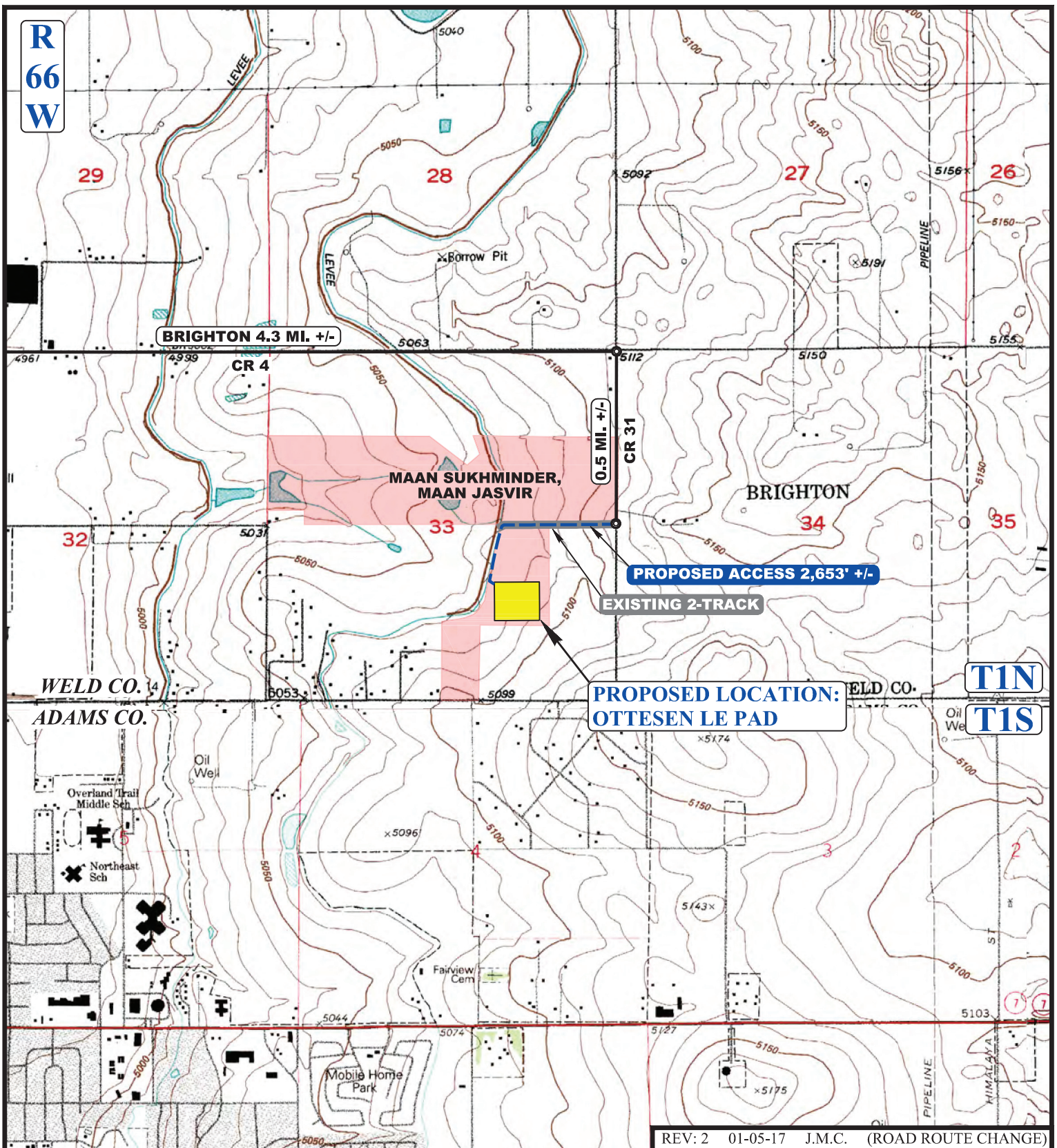
GREAT WESTERN OPERATING COMPANY

OTTESEN LE PAD
N 1/2 SE 1/4, SECTION 33, T1N, R66W, 6th P.M.
WELD COUNTY, COLORADO



UELS, LLC
Corporate Office * 85 South 200 East
Vernal, UT 84078 * (435) 789-1017

SURVEYED BY	D.N., C.M.	06-30-16	SCALE
DRAWN BY	J.L.G.	11-12-15	1 : 100,000
ACCESS ROAD MAP			TOPO A



REV: 2 01-05-17 J.M.C. (ROAD ROUTE CHANGE)

NOTE: PARCEL DATA SHOWN HAS BEEN OBTAINED FROM VARIOUS SOURCES AND SHOULD BE USED FOR MAPPING, GRAPHIC AND PLANNING PURPOSES ONLY. NO WARRANTY IS MADE BY UINTAH ENGINEERING AND LAND SURVEYING (UELS) FOR ACCURACY OF THE PARCEL DATA.

LEGEND:

- EXISTING ROAD
- PROPOSED ROAD
- EXISTING 2-TRACK



GREAT WESTERN OPERATING COMPANY

OTTESEN LE PAD
N 1/2 SE 1/4, SECTION 33, T1N, R66W, 6th P.M.
WELD COUNTY, COLORADO

SURVEYED BY	D.N., C.M.	06-30-16	SCALE
DRAWN BY	J.L.G.	11-12-15	1 : 24,000
ACCESS ROAD MAP			TOPO B



UELS, LLC
Corporate Office * 85 South 200 East
Vernal, UT 84078 * (435) 789-1017