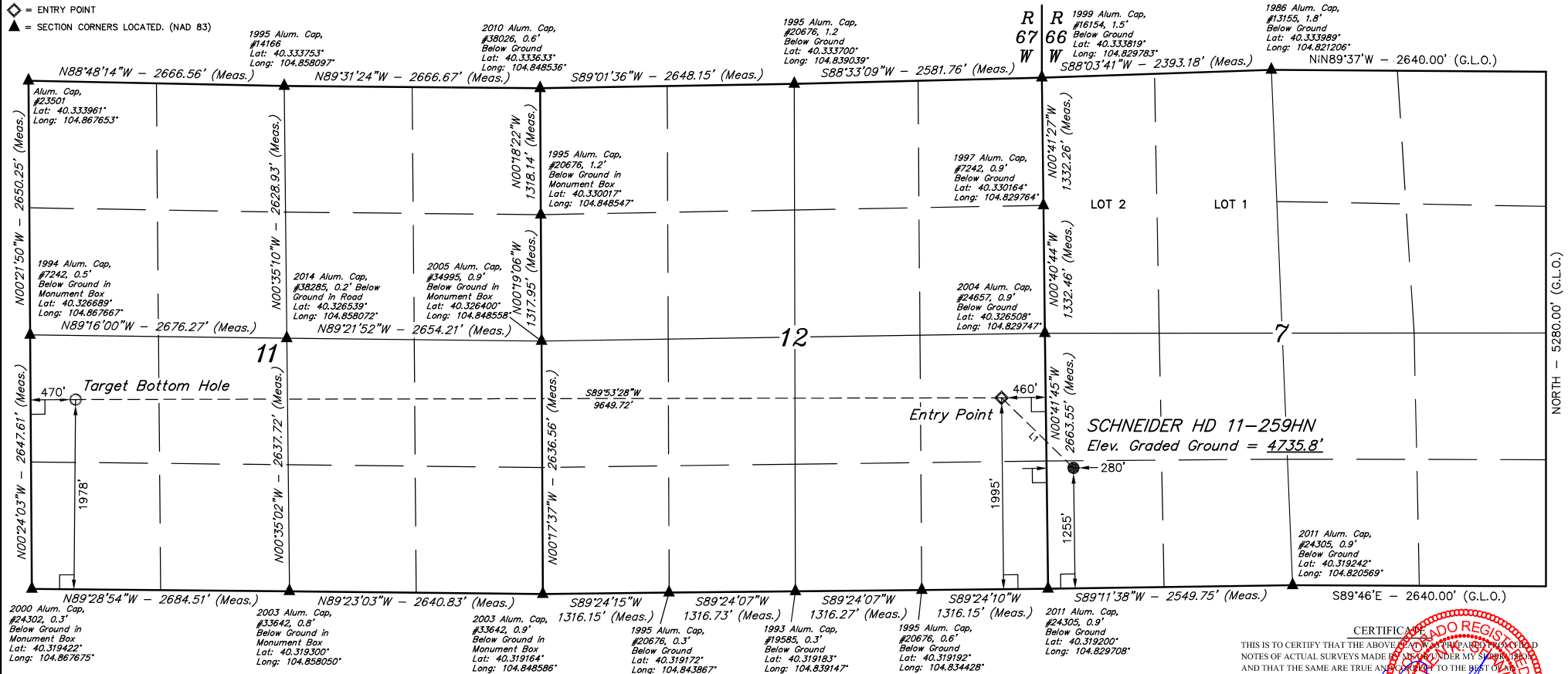


**LEGEND:**

- = 90° SYMBOL
- = PROPOSED WELLHEAD.
- = TARGET BOTTOM HOLE.
- ◆ = ENTRY POINT
- ▲ = SECTION CORNERS LOCATED. (NAD 83)

T4N, R66W, 6th P.M.



**LINE TABLE**

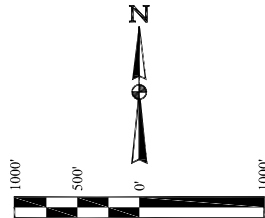
LINE	DIRECTION	LENGTH
L1	N45°41'39"W	1046.49'

**BASIS OF BEARINGS**

BASIS OF BEARINGS IS A G.P.S. OBSERVATION

**BASIS OF ELEVATION**

USGS COOPERATIVE BASE NETWORK CONTROL STATION, DESIGNATION "VERMILYEA". NGS DATA SHEET LISTS THE NAVD 88 ELEVATION AS BEING 5026 FEET.



CERTIFICATE OF RECORD  
THIS IS TO CERTIFY THAT THE ABOVE SHOWN INFORMATION IS A TRUE AND CORRECT COPY OF THE ORIGINAL RECORDS OF THE SURVEYOR AND THAT THE SAME ARE TRUE AND CORRECT TO THE BEST OF MY KNOWLEDGE AND BELIEF.

REGISTERED LAND SURVEYOR  
REGISTRATION NO. 28285  
STATE OF COLORADO

REV: 2 11-16-16 K.B. (TBH CHANGE)

PDOP = 1.2

**GREAT WESTERN OPERATING COMPANY**

SCHNEIDER HD 11-259HN  
SW 1/4 SW 1/4, SECTION 7, T4N, R66W, 6th P.M.  
WELD COUNTY, COLORADO

SURVEYED BY	GREG WEIMER, J.S.	05-27-16	SCALE
DRAWN BY	K.B.	05-31-16	1" = 1000'

**WELL LOCATION PLAT**

NAD 83 (SURFACE LOCATION)	NAD 83 (ENTRY POINT)	NAD 83 (TARGET BOTTOM HOLE)
LATITUDE = 40°19'21.53" (40.322647)	LATITUDE = 40°19'28.81" (40.324669)	LATITUDE = 40°19'29.39" (40.324831)
LONGITUDE = 104°49'43.40" (104.828722)	LONGITUDE = 104°49'52.99" (104.831386)	LONGITUDE = 104°51'57.54" (104.865983)
NAD 27 (SURFACE LOCATION)	NAD 27 (ENTRY POINT)	NAD 27 (TARGET BOTTOM HOLE)
LATITUDE = 40°19'21.60" (40.322667)	LATITUDE = 40°19'28.88" (40.324689)	LATITUDE = 40°19'29.45" (40.324847)
LONGITUDE = 104°49'41.51" (104.828197)	LONGITUDE = 104°49'51.10" (104.830861)	LONGITUDE = 104°51'55.64" (104.865456)



**UELS, LLC**  
Corporate Office \* 85 South 200 East  
Vernal, UT 84078 \* (435) 789-1017