

**WELL LOCATION DATA:**  
 LATITUDE: 40.41460°N  
 LONGITUDE: 104.79869°W  
 ELEVATION: 4788'  
 PDOP: 0.8  
 OPERATOR: C. HOLMES  
 SURFACE USE: CROP LAND  
 PROPOSED GROUND ELEVATION: 4787.9'  
**NEAREST CULTURAL ITEMS:**  
 PROPERTY LINE: 413'  
 BUILDING: 964'  
 BUILDING UNIT: 1023'  
 HIGH OCCUPANCY BUILDING UNIT: 2224'  
 DESIGNATED OUTSIDE ACTIVITY AREA: 5280'+  
 PUBLIC ROAD: 1176'  
 ABOVE GROUND UTILITY: 1218'  
 RAILROAD: 5280'+

FIRST SUBMITTAL	10/13/15
SECOND SUBMITTAL	12/22/16

#### NOTES:

1. DISTANCES ARE MEASURED PERPENDICULAR TO NEAREST SECTION LINE AND ARE SHOWN ON THE SAME SIDE OF THE SECTION LINE WHERE THE WELL IS LOCATED.
2. THIS MAP DOES NOT REPRESENT A MONUMENTED BOUNDARY SURVEY. SIXTEENTH CORNER LOCATIONS ARE COMPUTED, UNLESS OTHERWISE NOTED.
3. BOTTOM HOLE LOCATIONS AND HORIZONTAL COMPLETION ZONE PROVIDED BY OTHERS.

#### BASIS OF BEARING:

THE NORTH LINE OF THE NORTHEAST QUARTER OF SECTION 8-T5N-R66W BEARS N89°02'43"E BETWEEN THE NORTH QUARTER CORNER OF SECTION 8 MONUMENTED WITH 3 1/4" A.C. IN R.B. STAMPED "PLS 25381" AND THE NORTHEAST CORNER OF SECTION 8 MONUMENTED WITH A 3 1/4" A.C. IN R.B. "LS 22098" BASED ON THE COLORADO NORTH 0501 STATE PLANE COORDINATE SYSTEM.

ELEVATIONS ARE BASED ON NAVD 88, AS OBSERVED FROM GPS OBSERVATIONS

#### LEGEND

- ALIQUOT CORNER A.C. ALUMINUM CAP
- ⊕ BOTTOM HOLE R.B. RANGE BOX
- PROPOSED WELL

#### LAND SURVEYOR'S CERTIFICATION

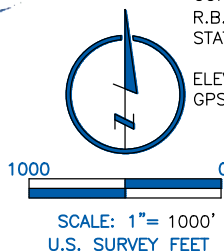
LAMP, RYNEARSON & ASSOCIATES, INC., OF FT. COLLINS, COLORADO HAS, IN ACCORDANCE WITH A REQUEST FROM DUSTIN DYK AT EXTRACTION OIL & GAS, DETERMINED THE SURFACE LOCATION OF THE WELL DESIGNATED AS TC-COUNTRY CLUB WEST 1-9-11 TO BE 2478' FROM THE NORTH LINE AND 1194' FROM THE EAST LINE OF SECTION 8, TOWNSHIP 5 NORTH, RANGE 66 WEST OF THE 6TH P.M., WELD COUNTY, COLORADO.



FRANK A. KOHL  
 COLORADO PLS 37067

DATE OF SURVEY: 9/18/2013 AND 12/10/13 (SECTION CONTROL)

DATE OF SURVEY: 2/21/2014 (WELL LOCATION)

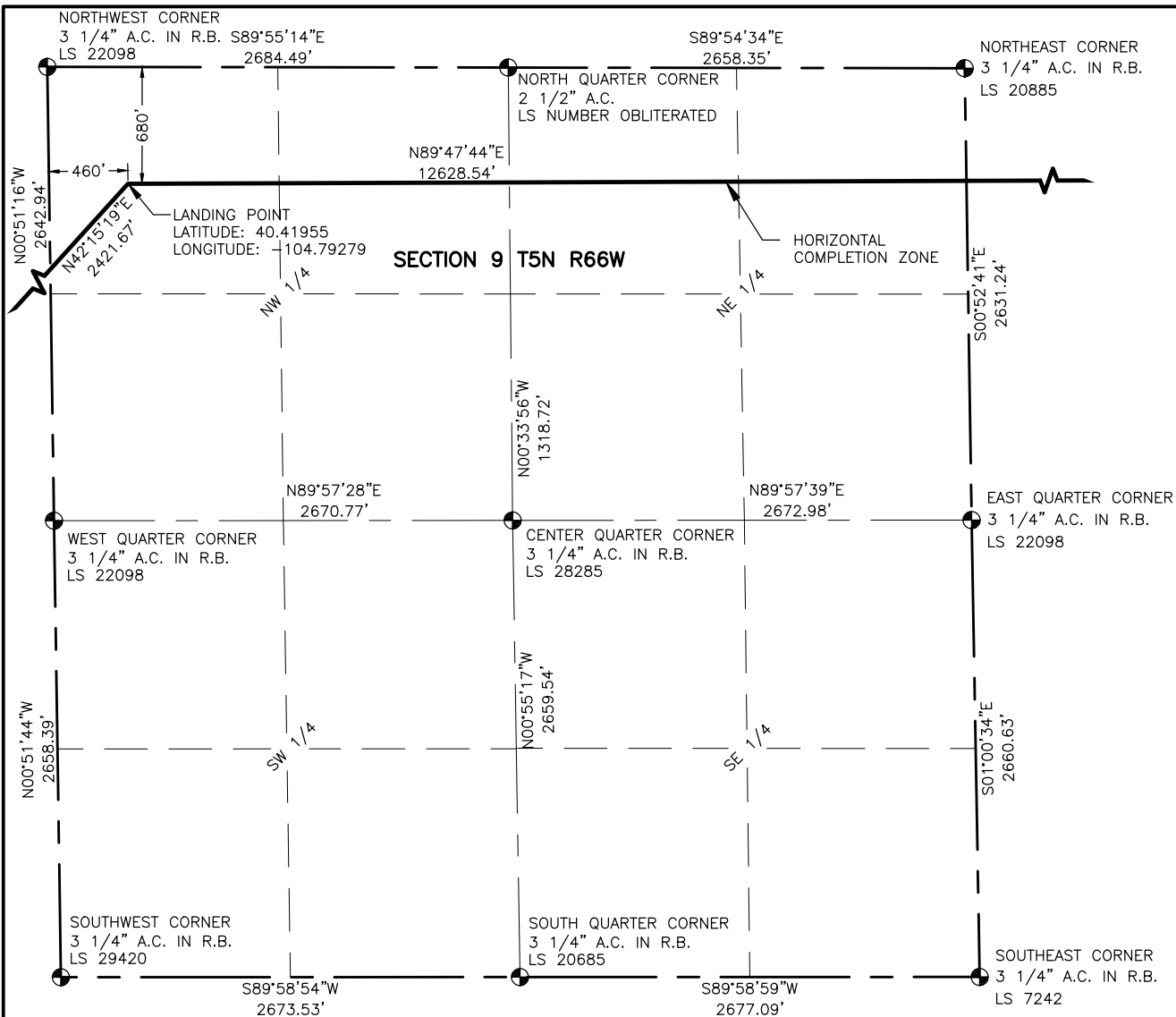


**LAMP RYNEARSON**  
 & ASSOCIATES

4715 Innovation Drive 970.226.0342 | P  
 Fort Collins, CO 80525 970.226.0879 | F  
 www.LRA-Inc.com

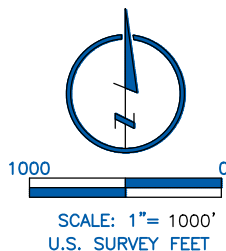
Proposed Well Location Exhibit  
 TC-Country Club West 1-9-11  
 1 of 4

drawn by	date	cogcc id	project - task number	book and page	surface - location
KJW	12/22/16	436824	0213054.01		SE/4, NE/4, SEC 8 T5N R66W
path/filename P:\_Engineering\0213054.01\DRAWINGS\EXHIBITS\0213054-01EXWPH.dwg					



# **LEGEND**

- ALIQUOT CORNER
- ⊕ BOTTOM HOLE
- PROPOSED WELL
- A.C. ALUMINUM CAP
- R.B. RANGE BOX



# **NOTES:**

1. DISTANCES ARE MEASURED PERPENDICULAR TO NEAREST SECTION LINE AND ARE SHOWN ON THE SAME SIDE OF THE SECTION LINE WHERE THE WELL IS LOCATED.
2. THIS MAP DOES NOT REPRESENT A MONUMENTED BOUNDARY SURVEY. SIXTEENTH CORNER LOCATIONS ARE COMPUTED, UNLESS OTHERWISE NOTED.
3. BOTTOM HOLE LOCATIONS AND HORIZONTAL COMPLETION ZONE PROVIDED BY OTHERS.



**LAMP RYNEARSON**  
 & ASSOCIATES

4715 Innovation Drive 970.226.0342 | P  
 Fort Collins, CO 80525 970.226.0879 | F  
 www.LRA-Inc.com

Proposed Well Location Exhibit  
 TC-Country Club West 1-9-11  
 2 of 4

**drawn by**

**date**

**cogcc id**

**project - task number**

**book and page**

**surface - location**

KJW

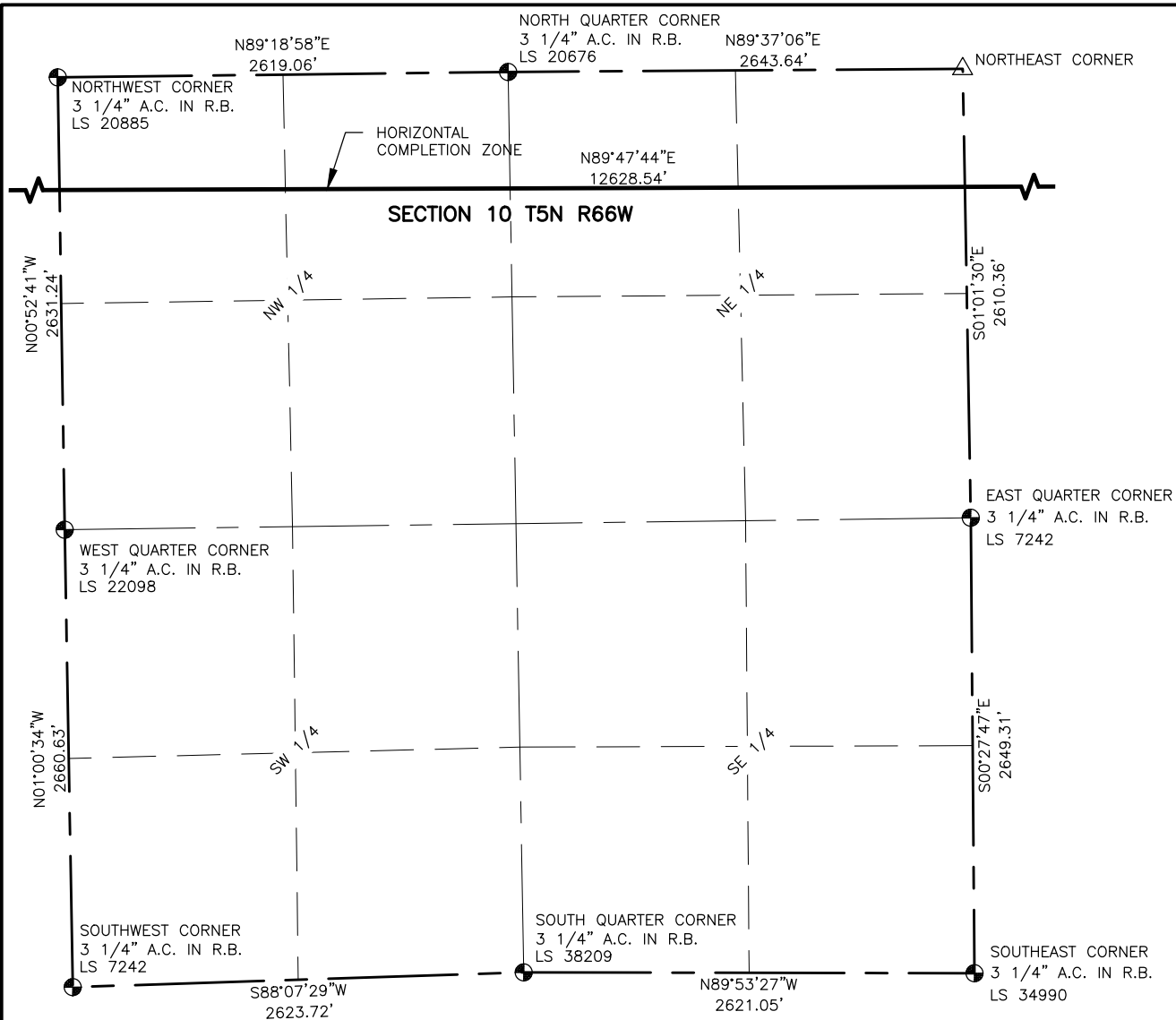
12/22/16

436824

0213054.01

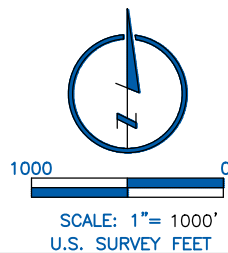
SE/4, NE/4, SEC 8 T5N R66W

**path/filename** P:\\_Engineering\0213054.01\DRAWINGS\EXHIBITS\0213054-01EXWPHB.dwg



#### LEGEND

- ALIQUOT CORNER
- ⊕ BOTTOM HOLE
- △ COMPUTED ALIQUOT CORNER FROM MONUMENT ACCESSORIES
- PROPOSED WELL
- A.C. ALUMINUM CAP
- R.B. RANGE BOX



#### NOTES:

- DISTANCES ARE MEASURED PERPENDICULAR TO NEAREST SECTION LINE AND ARE SHOWN ON THE SAME SIDE OF THE SECTION LINE WHERE THE WELL IS LOCATED.
- THIS MAP DOES NOT REPRESENT A MONUMENTED BOUNDARY SURVEY. SIXTEENTH CORNER LOCATIONS ARE COMPUTED, UNLESS OTHERWISE NOTED.
- BOTTOM HOLE LOCATIONS AND HORIZONTAL COMPLETION ZONE PROVIDED BY OTHERS.



**LAMP RYNEARSON**  
& ASSOCIATES

4715 Innovation Drive 970.226.0342 | P  
Fort Collins, CO 80525 970.226.0879 | F  
www.LRA-Inc.com

Proposed Well Location Exhibit  
TC-Country Club West 1-9-11  
3 of 4

drawn by

KJW

date

12/22/16

cogcc id

436824

project - task number

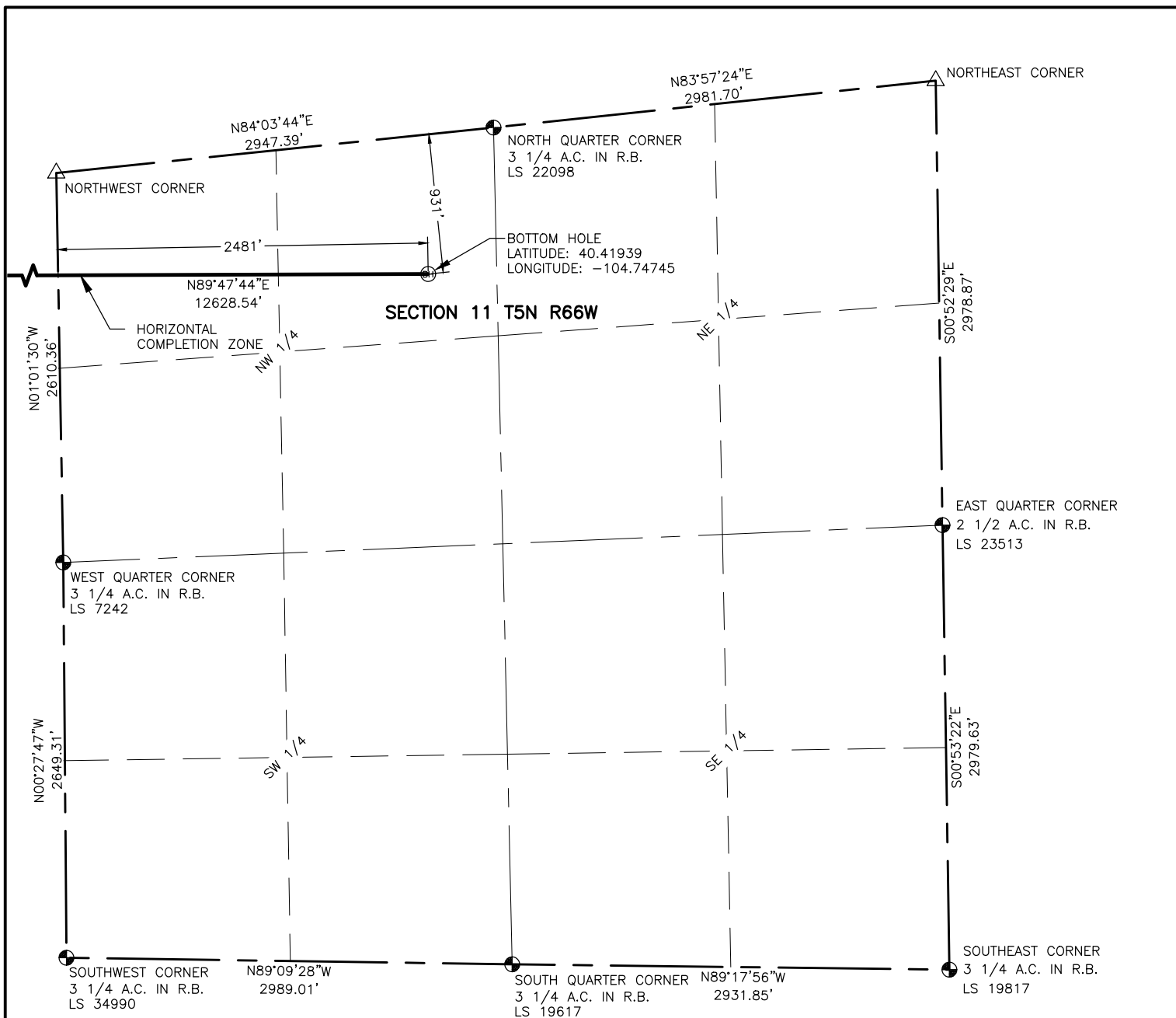
0213054.01

book and page

surface - location

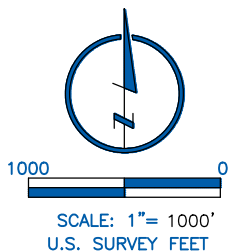
SE/4, NE/4, SEC 8 T5N R66W

path\filename P:\\_Engineering\0213054.01\DRAWINGS\EXHIBITS\0213054-01EXWPHC.dwg



# LEGEND

- ALIQUOT CORNER
- ⊕ BOTTOM HOLE
- △ COMPUTED ALIQUOT CORNER FROM MONUMENT ACCESSORIES
- PROPOSED WELL
- A.C. ALUMINUM CAP
- R.B. RANGE BOX



# NOTES:

1. DISTANCES ARE MEASURED PERPENDICULAR TO NEAREST SECTION LINE AND ARE SHOWN ON THE SAME SIDE OF THE SECTION LINE WHERE THE WELL IS LOCATED.
2. THIS MAP DOES NOT REPRESENT A MONUMENTED BOUNDARY SURVEY. SIXTEENTH CORNER LOCATIONS ARE COMPUTED, UNLESS OTHERWISE NOTED.
3. BOTTOM HOLE LOCATIONS AND HORIZONTAL COMPLETION ZONE PROVIDED BY OTHERS.



**LAMP RYNEARSON**  
& ASSOCIATES

4715 Innovation Drive 970.226.0342 | P  
Fort Collins, CO 80525 970.226.0879 | F  
www.LRA-Inc.com

Proposed Well Location Exhibit  
TC-Country Club West 1-9-11  
4 of 4

drawn by

KJW

date

12/22/16

cogcc id

436824

project - task number

0213054.01

book and page

surface - location

SE/4, NE/4, SEC 8 T5N R66W

path/filename P:\\_Engineering\0213054.01\DRAWINGS\EXHIBITS\0213054-01EXWPHD.dwg