

FIRST SUBMITTAL	10/13/15
SECOND SUBMITTAL	12/22/16

NOTES:

1. DISTANCES ARE MEASURED PERPENDICULAR TO NEAREST SECTION LINE AND ARE SHOWN ON THE SAME SIDE OF THE SECTION LINE WHERE THE WELL IS LOCATED.
2. THIS MAP DOES NOT REPRESENT A MONUMENTED BOUNDARY SURVEY. SIXTEENTH CORNER LOCATIONS ARE COMPUTED, UNLESS OTHERWISE NOTED.
3. BOTTOM HOLE LOCATIONS AND HORIZONTAL COMPLETION ZONE PROVIDED BY OTHERS.

BASIS OF BEARING:

THE NORTH LINE OF THE NORTHEAST QUARTER OF SECTION 8-T5N-R66W BEARS N89°02'43\"E BETWEEN THE NORTH QUARTER CORNER OF SECTION 8 MONUMENTED WITH 3 1/4\" A.C. IN R.B. STAMPED \"PLS 25381\" AND THE NORTHEAST CORNER OF SECTION 8 MONUMENTED WITH A 3 1/4\" A.C. IN R.B. \"LS 22098\" BASED ON THE COLORADO NORTH 0501 STATE PLANE COORDINATE SYSTEM.

ELEVATIONS ARE BASED ON NAVD 88, AS OBSERVED FROM GPS OBSERVATIONS

LEGEND

- ALIQUOT CORNER A.C. ALUMINUM CAP
- ⊙ BOTTOM HOLE R.B. RANGE BOX
- PROPOSED WELL

LAND SURVEYOR'S CERTIFICATION

LAMP, RYNEARSON & ASSOCIATES, INC., OF FT. COLLINS, COLORADO HAS, IN ACCORDANCE WITH A REQUEST FROM DUSTIN DYK AT EXTRACTION OIL & GAS, DETERMINED THE SURFACE LOCATION OF THE WELL DESIGNATED AS TC-HILAND KNOLLS 4-9-11 TO BE 2536' FROM THE SOUTH LINE AND 1188' FROM THE EAST LINE OF SECTION 8, TOWNSHIP 5 NORTH, RANGE 66 WEST OF THE 6TH P.M., WELD COUNTY, COLORADO.

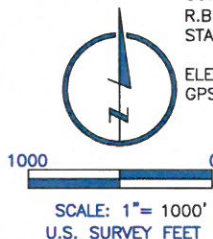


FRANK A. KOHL

COLORADO PLS 37067

DATE OF SURVEY: 9/18/2013 AND 12/10/13 (SECTION CONTROL)

DATE OF SURVEY: 2/21/2014 (WELL LOCATION)



LAMP RYNEARSON
& ASSOCIATES

4715 Innovation Drive 970.226.0342 | P
Fort Collins, CO 80525 970.226.0879 | F
www.LRA-Inc.com

Proposed Well Location Exhibit
TC-Hiland Knolls 4-9-11
1 of 4

drawn by
KJW

date
12/22/16

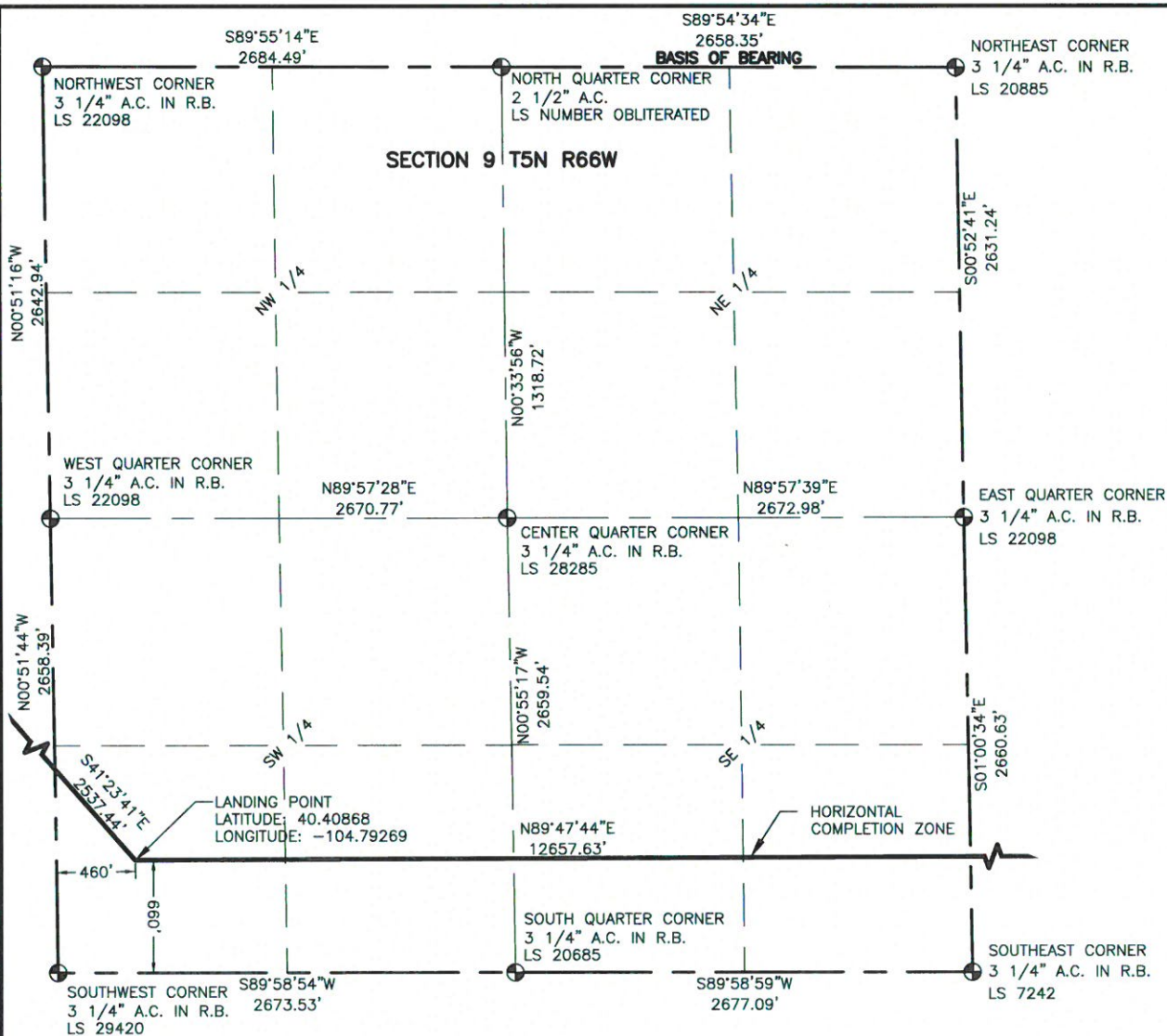
cogcc id
436824

project - task number
0213054.01

book and page

surface - location
NE/4, SE/4, SEC 8 T5N R66W

path\\filename P:_Engineering\0213054.01\DRAWINGS\EXHIBITS\0213054-01EXWPT.dwg



LAMP RYNEARSON
& ASSOCIATES

4715 Innovation Drive 970.226.0342 | P
Fort Collins, CO 80525 970.226.0879 | F
www.LRA-Inc.com

Proposed Well Location Exhibit
TC-Hiland Knolls 4-9-11
2 of 4

drawn by

KJW

date

12/22/16

cogcc Id

436824

project - task number

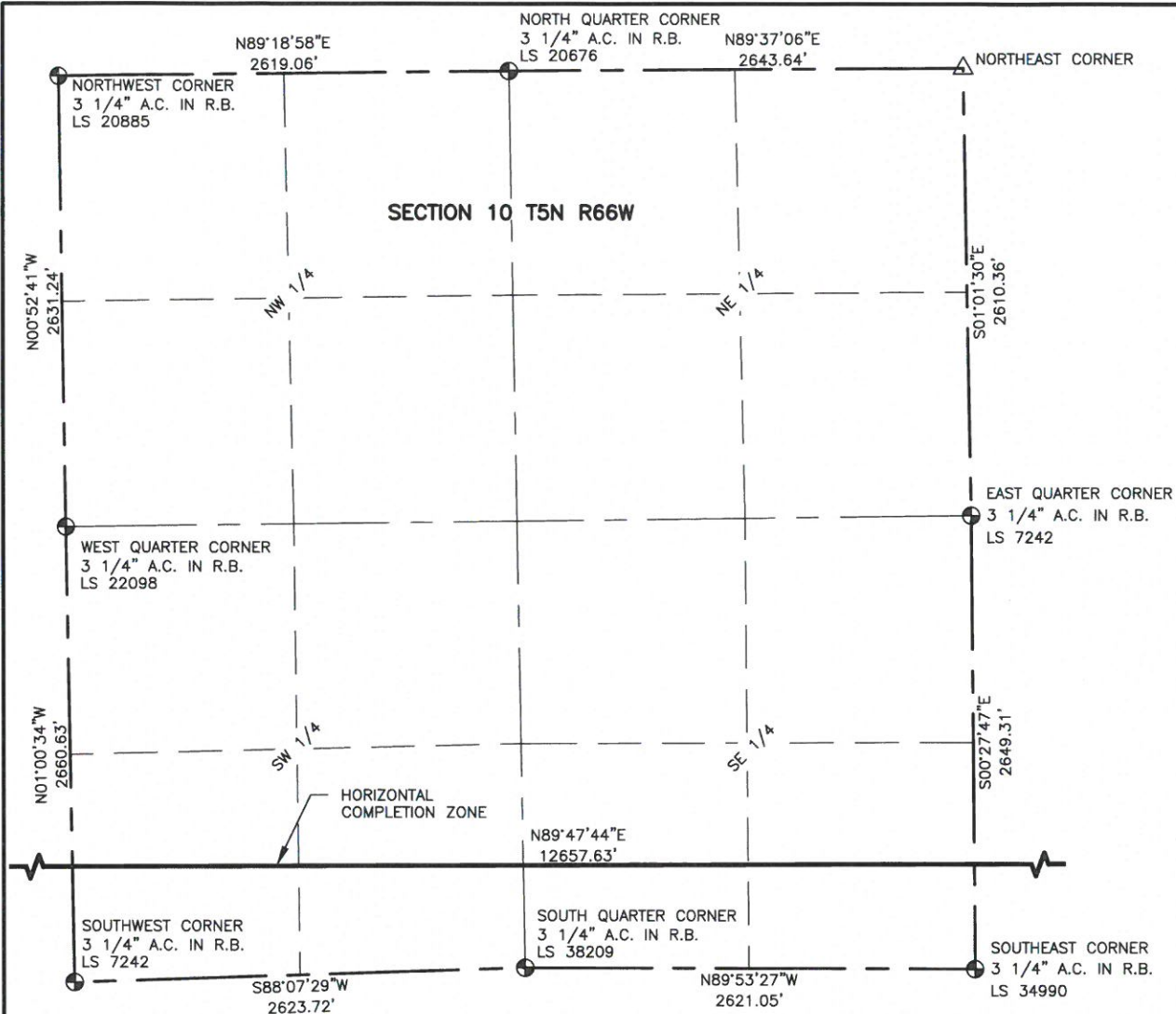
0213054.01

book and page

surface - location

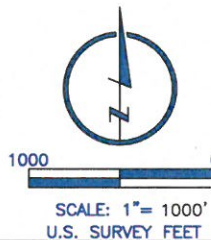
NE/4, SE/4, SEC 8 T5N R66W

path/filename P:\Engineering\0213054.01\DRAWINGS\EXHIBITS\0213054-01EXWPTB.dwg



LEGEND

- ALIQUOT CORNER
- ⊙ BOTTOM HOLE
- △ COMPUTED ALIQUOT CORNER FROM MONUMENT ACCESSORIES
- PROPOSED WELL
- A.C. ALUMINUM CAP
- R.B. RANGE BOX



NOTES:

1. DISTANCES ARE MEASURED PERPENDICULAR TO NEAREST SECTION LINE AND ARE SHOWN ON THE SAME SIDE OF THE SECTION LINE WHERE THE WELL IS LOCATED.
2. THIS MAP DOES NOT REPRESENT A MONUMENTED BOUNDARY SURVEY. SIXTEENTH CORNER LOCATIONS ARE COMPUTED, UNLESS OTHERWISE NOTED.
3. BOTTOM HOLE LOCATIONS AND HORIZONTAL COMPLETION ZONE PROVIDED BY OTHERS.



LAMP RYNEARSON
& ASSOCIATES

4715 Innovation Drive 970.226.0342 | P
Fort Collins, CO 80525 970.226.0879 | F
www.LRA-Inc.com

Proposed Well Location Exhibit
TC-Hiland Knolls 4-9-11
3 of 4

drawn by
KJW

date
12/22/16

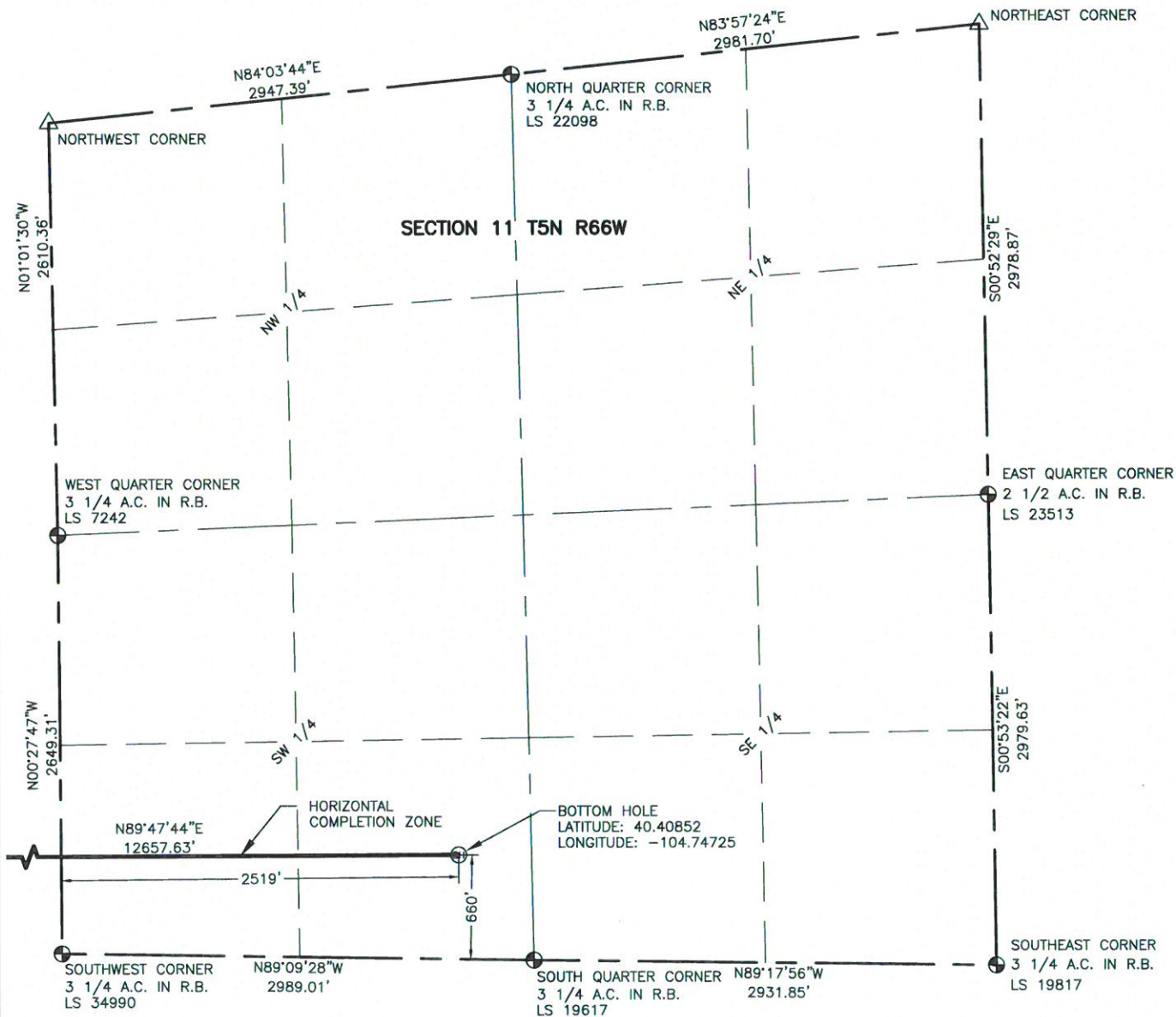
cogcc id
436824

project - task number
0213054.01

book and page

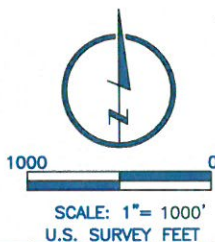
surface - location
NE/4, SE/4, SEC 8 T5N R66W

path/filename P:\Engineering\0213054.01\DRAWINGS\EXHIBITS\0213054-01EXWPTC.dwg



LEGEND

- ⊕ ALIQUOT CORNER
- ⊙ BOTTOM HOLE
- △ COMPUTED ALIQUOT CORNER FROM MONUMENT ACCESSORIES
- PROPOSED WELL
- A.C. ALUMINUM CAP
- R.B. RANGE BOX



NOTES:

- DISTANCES ARE MEASURED PERPENDICULAR TO NEAREST SECTION LINE AND ARE SHOWN ON THE SAME SIDE OF THE SECTION LINE WHERE THE WELL IS LOCATED.
- THIS MAP DOES NOT REPRESENT A MONUMENTED BOUNDARY SURVEY. SIXTEENTH CORNER LOCATIONS ARE COMPUTED, UNLESS OTHERWISE NOTED.
- BOTTOM HOLE LOCATIONS AND HORIZONTAL COMPLETION ZONE PROVIDED BY OTHERS.



LAMP RYNEARSON
& ASSOCIATES

4715 Innovation Drive 970.226.0342 | P
Fort Collins, CO 80525 970.226.0879 | F
www.LRA-Inc.com

Proposed Well Location Exhibit
TC-Hiland Knolls 4-9-11
4 of 4

drawn by
KJW

date
12/22/16

cogcc Id
436824

project - task number
0213054.01

book and page

surface - location
NE/4, SE/4, SEC 8 T5N R66W

path/filename P:\Engineering\0213054.01\DRAWINGS\EXHIBITS\0213054-01EXWPTD.dwg