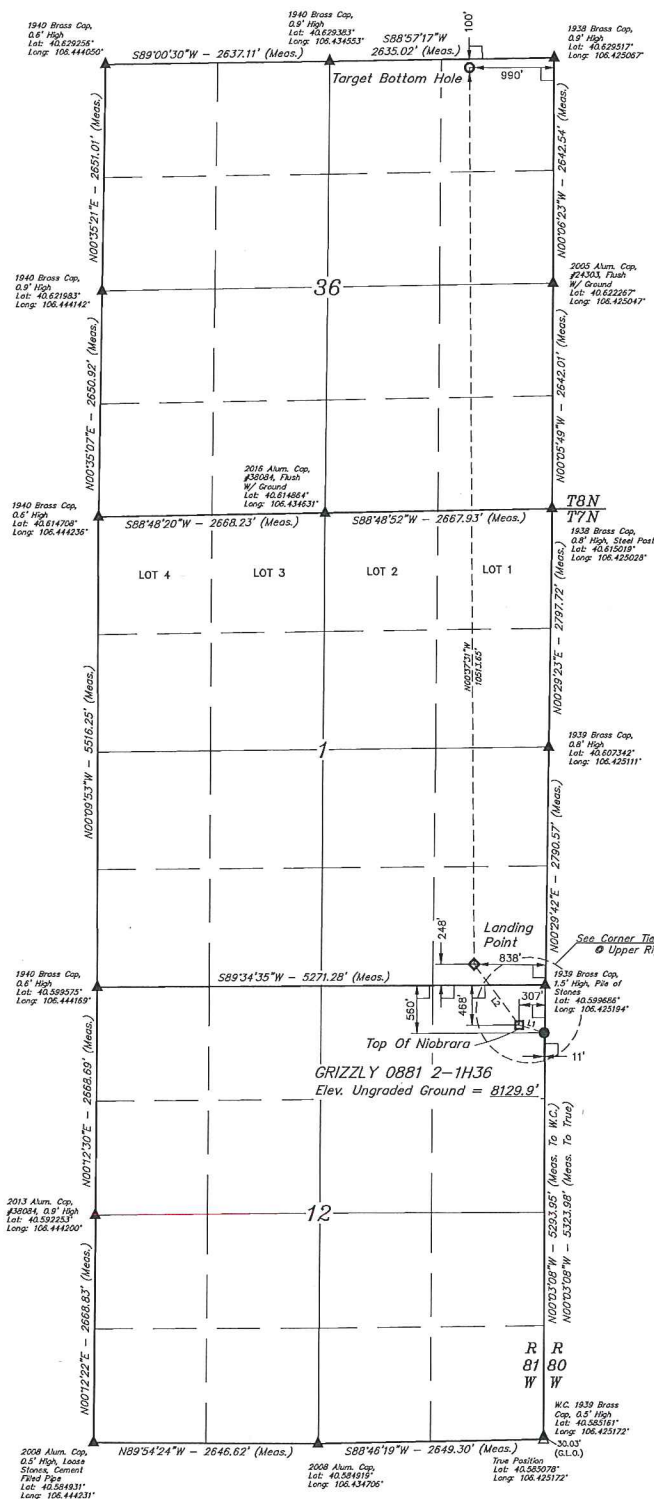


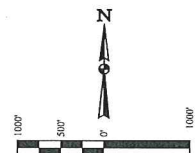
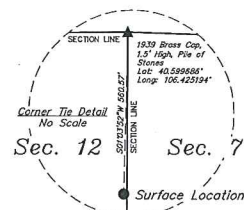
T7N, R81W, 6th P.M.

LEGEND:

- L = 90° SYMBOL.
 ● = PROPOSED WELLHEAD.
 □ = TOP OF NEOBARRA.
 ◇ = LANDING POINT.
 ○ = TARGET BOTTOM HOLE.
 ▲ = SECTION CORNERS LOCATED. (NAD 83)
 △ = SECTION CORNERS RE-ESTABLISHED. (Not Set on Ground.) (NAD 83)



LINE TABLE		
LINE	DIRECTION	LENGTH
L1	N73°05'16"W	309.38'
L2	N36°39'48"W	887.61'



BASIS OF BEARINGS

BASIS OF BEARINGS IS A G.P.S. OBSERVATION

BASIS OF ELEVATION
SPOT ELEVATION AT THE SOUTHEAST CORNER OF SECTION
29, T7N, R80W, 6th P.M., TAKEN FROM THE COALMONT
QUADRANGLE, COLORADO, JACKSON COUNTY 7.5 MINUTE
QUAD. (TOPOGRAPHIC MAP) PUBLISHED BY THE UNITED
STATES DEPARTMENT OF THE INTERIOR, GEOLOGICAL SURVEY.
SAID ELEVATION IS MARKED AS BEING 8156 FEET.

PDOP = 1.6

NAD 83 (SURFACE LOCATION)
LATITUDE = 49°53'53.14" (06.39814)
LONGITUDE = 106°42'33.14" (06.42331)
NAD 27 (SURFACE LOCATION)
LATITUDE = 49°53'53.14" (06.39816)
LONGITUDE = 106°42'33.14" (06.42344)
STATE PLANE NAD 83 (CO. NORTH)
N = 162939.33 E = 742971.13
NAD 83 (TOP OF SUBMARK)
LATITUDE = 49°53'54.27" (06.39829)
LONGITUDE = 106°42'33.67" (06.42337)
NAD 27 (TOP OF SUBMARK)
LATITUDE = 49°53'54.27" (06.39834)
LONGITUDE = 106°42'33.67" (06.42342)
STATE PLANE NAD 83 (CO. NORTH)
N = 162939.33 E = 742971.13
STATE PLANE NAD 27 (CO. NORTH)
N = 162939.33 E = 742971.13

NAD 83 (LANDING POINT)
LATITUDE = 49°36'01.33" (06.60343)
LONGITUDE = 106°43'56.14" (06.43826)
NAD 27 (LANDING POINT)
LATITUDE = 49°36'01.33" (06.60349)
LONGITUDE = 106°43'56.14" (06.43836)
STATE PLANE NAD 83 (CO. NORTH)
N = 162939.33 E = 742971.13
STATE PLANE NAD 27 (CO. NORTH)
N = 162939.33 E = 742971.13

NAD 83 (TARGET BOTTLE HOLE)
LATITUDE = 49°47'54.19" (06.62594)
LONGITUDE = 106°43'56.14" (06.43831)
NAD 27 (TARGET BOTTLE HOLE)
LATITUDE = 49°47'54.19" (06.62594)
LONGITUDE = 106°43'56.14" (06.43844)
STATE PLANE NAD 83 (CO. NORTH)
N = 173406.69 E = 742324.58
STATE PLANE NAD 27 (CO. NORTH)
N = 173406.69 E = 742324.58

THIS IS TO CERTIFY THAT THE ABOVE
NOTES OF ACTUAL SURVEYS MADE IN
AND THAT THE SAME ARE TRUE AND
KNOWLEDGE AND BELIEF.

CERTIFICATE

MISSISSIPPI LAND SURVEYORS BOARD

RECORDED LAND SURVEYOR

RECORDING NO. 28251

STATE OF MISSISSIPPI


18205

16

REV: 1 09-30-16 M.D. (ADD TOP OF NIOBRARA & LP)

SandRidge Exploration & Production, LLC

GRIZZLY 0881 2-1H36
NE 1/4 NE 1/4, SECTION 12, T7N, R81W, 6th P.M.
JACKSON COUNTY, COLORADO

 UINTECH ENGINEERING & LAND SURVEYING		UELS, LLC Corporate Office * 85 South 200 East Vernal, UT 84078 * (435) 789-1017	
SURVEYED BY	CILAD MEIERS, D.S.	09-01-16	SCALE
DRAWN BY	T.B.	09-08-16	1" = 100'
WELL LOCATION PLAT			