

<div><div><div>RMWS</div><div>ROCKY MOUNTAIN WIRELINE SERVICE</div></div></div>			TEMPERATURE CCL LOG (QUICK LOOK)		
Company TEP ROCKY MOUNTAIN LLC					
Well RU 424-7					
Field RULISON					
County GARFIELD			State COLORADO		
Location:			Other Services		
			API # : 05-045-23258		
			QtQtr: NWSW		
			LAT. 39.452179		
			LON. -107.825805		
SEC 7			TWP 7S	RGE 93W	
Permanent Datum			G.L.	Elevation	
Log Measured From			K.B.	7357'	K.B. 7381'
Drilling Measured From			K.B.	Ft Above PD 24.0'	D.F. 7357'
Date			12-31-2016		
Run Number			ONE		
Depth Driller			9971'		
Present Depth Driller			9928'		
Depth Logger			9940'		
Bottom Logged Interval			9940'		
Top Log Interval			SURFACE		
Fluid Level			FULL		
Type Fluid			WATER		
Max. Recorded Temp.			190.0°F		
Estimated Cement Top			4166'		
Equipment Number			216		
Location			GRAND JCT.		
Recorded By			CHEPKO		
Witnessed By			MR. ABBEY		
Run Number			Borehole Record		
			Bit	From	To
				Size	Weight
				4.50"	11.6#
					SURFACE
					9960.8

<<< Fold Here >>>

All interpretations are opinions based on inferences from electrical or other measurements and we cannot and do not guarantee the accuracy or correctness of any interpretation, and we shall not, except in the case of gross or willful negligence on our part, be liable or responsible for any loss, costs, damages, or expenses incurred or sustained by anyone resulting from any interpretation made by any of our officers, agents or employees. These interpretations are also subject to our general terms and conditions set out in our current Price Schedule.

WARRIOR 7.0 SOFTWARE - Comments

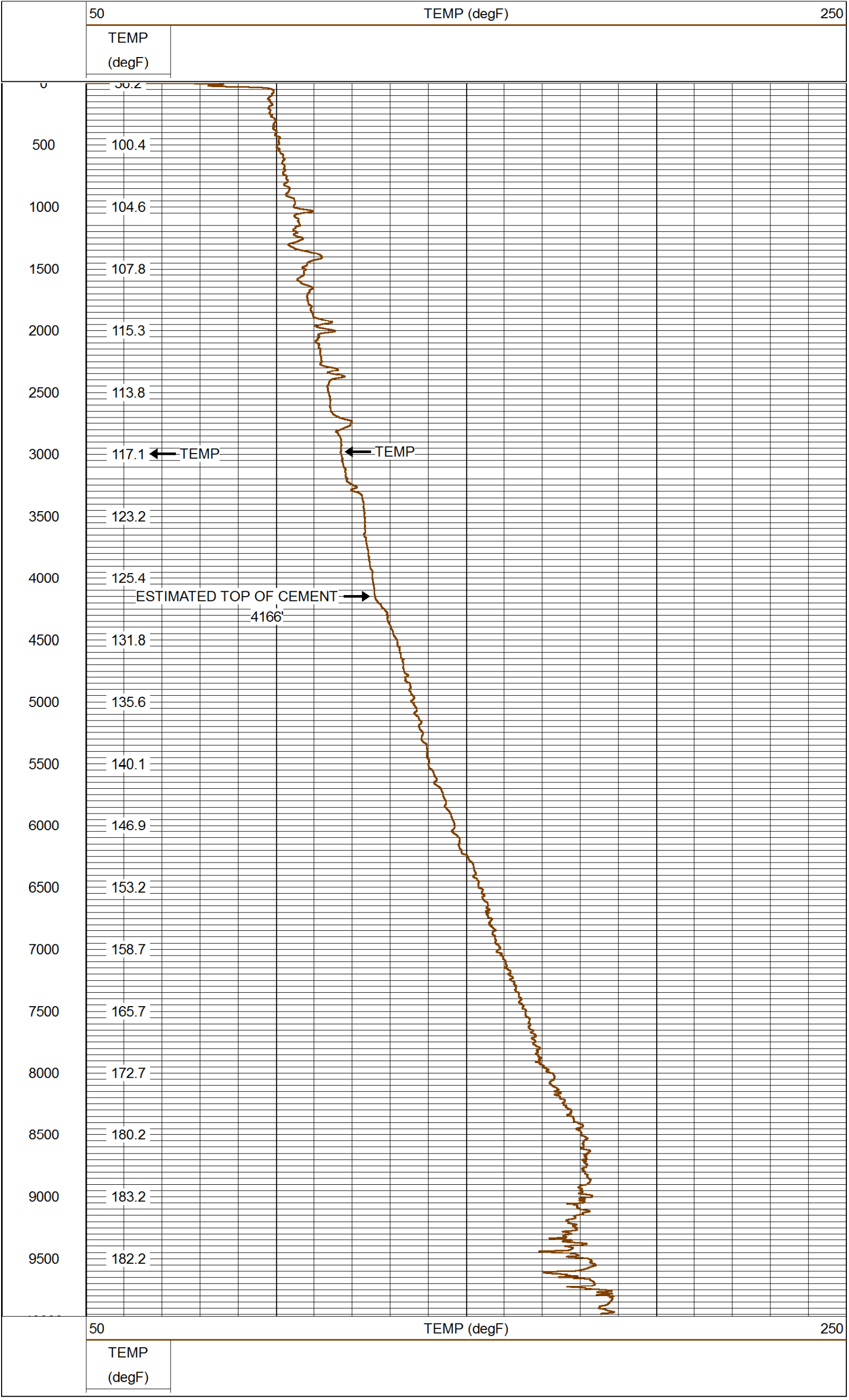
NOTE; THERE WAS NO LOG FOR DEPTH CONTROL.
SCALE MAIN PASS 5"= 100'.
NOTE; SHORT JOINT AT 6174' TO 6197'

RMWS

ROCKY MOUNTAIN WIRELINE SERVICE

MAIN PASS (QUICK LOOK)

Database File: 12312016_tep_ru424-7.db
Dataset Pathname: mainpass/pass1.1
Presentation Format: rmtmp_ql
Dataset Creation: Sat Dec 31 09:39:47 2016 by Calc SCH 120430
Charted by: Depth in Feet scaled 1:10000



<div><div><div>RMWS</div><div>ROCKY MOUNTAIN WIRELINE SERVICE</div></div></div>	Company	TEP ROCKY MOUNTAIN LLC
	Well	RU 424-7
	Field	RULISON
	County	GARFIELD
	State	COLORADO