



**TEMPERATURE CCL LOG  
(QUICK LOOK)**


Company	TEP ROCKY MOUNTAIN LLC	
Well	SR 44-12	
Field	RULISON	
County	GARFIELD	State COLORADO
Location:	API #: 05-045-23250	Other Services
	QtQtr: NWSW	
	LAT: 39.452158	
	LON: -107.825839	
Permanent Datum	G.L.	Elevation
Log Measured From	K.B.	7357'
Drilling Measured From	K.B.	FI Above PD 24.0'
	K.B.	D.F. 7357'
	K.B.	G.L. 7357'
Date	12-18-2016	
Run Number	ONE	
Depth Driller	9561'	
Present Depth Driller	9524'	
Depth Logger	9534'	
Bottom Logged Interval	9534'	
Top Log Interval	SURFACE	
Fluid Level	FULL	
Type Fluid	WATER	
Max. Recorded Temp.	178.5°F	
Estimated Cement Top	4212'	
Equipment Number	216	
Location	GRAND JCT.	
Recorded By	MONTANO	MCBROOM
Witnessed By	MR. BROWN	
Run Number	Bit From	To
	4.50"	11.6# SURFACE 9551'

<<< Fold Here >>>

All interpretations are opinions based on inferences from electrical or other measurements and we cannot and do not guarantee the accuracy or correctness of any interpretation, and we shall not, except in the case of gross or willful negligence on our part, be liable or responsible for any loss, costs, damages, or expenses incurred or sustained by anyone resulting from any interpretation made by any of our officers, agents or employees. These interpretations are also subject to our general terms and conditions set out in our current Price Schedule.

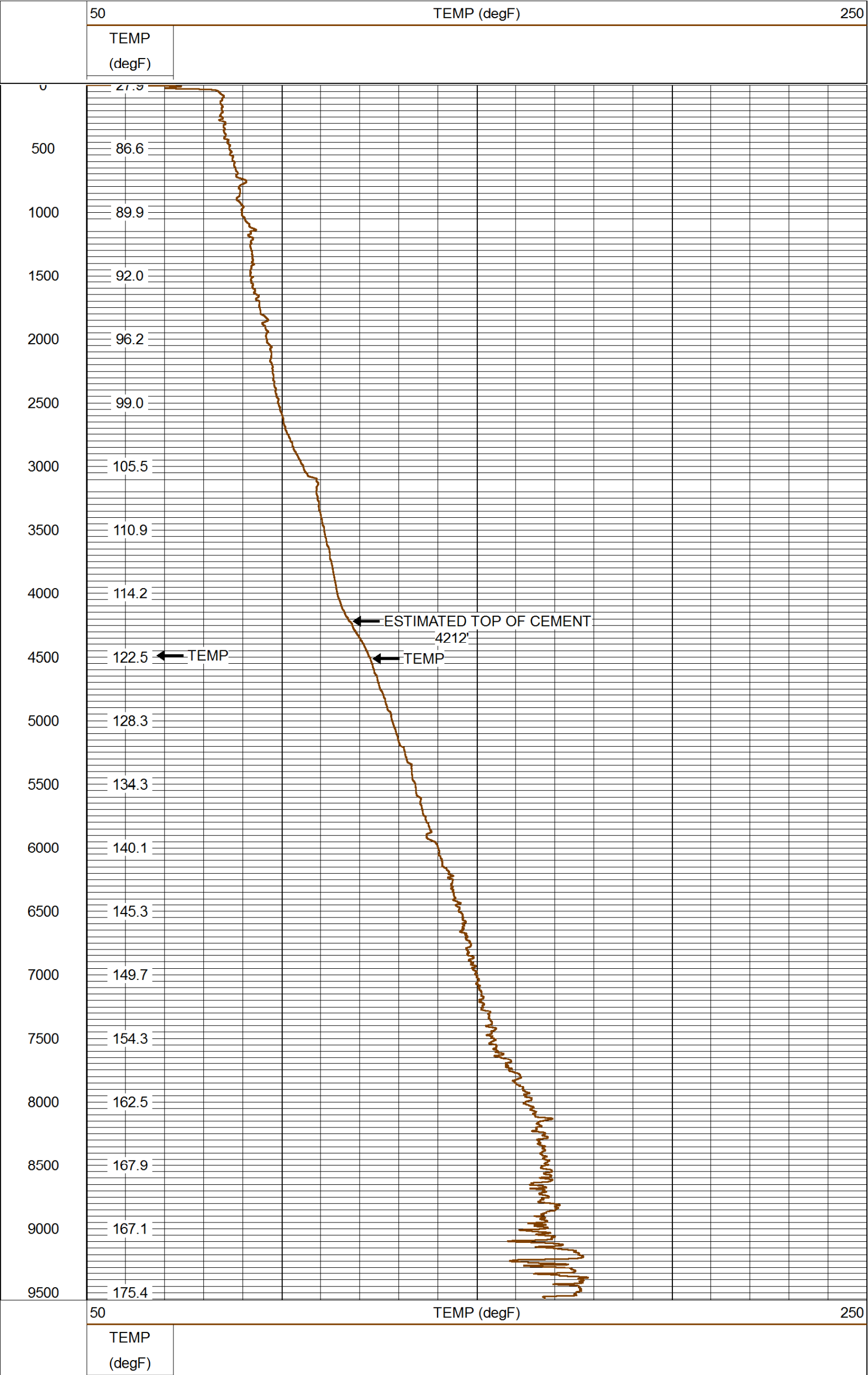
WARRIOR 7.0 SOFTWARE - Comments


**NOTE; THERE WAS NO LOG FOR DEPTH CONTROL.  
SCALE MAIN PASS 5"= 100'.  
NOTE; SHORT JOINT AT 5642' TO 5664'.**



# MAIN PASS (QUICK LOOK)

Database File: 121816\_tep\_sr\_44-12.db  
 Dataset Pathname: mainpass/pass1.1  
 Presentation Format: rmtmp\_ql  
 Dataset Creation: Sun Dec 18 06:39:07 2016 by Calc SCH 120430  
 Charted by: Depth in Feet scaled 1:10000



	Company	TEP ROCKY MOUNTAIN LLC
	Well	SR 44-12
	Field	RULISON
	County	GARFIELD
	State	COLORADO