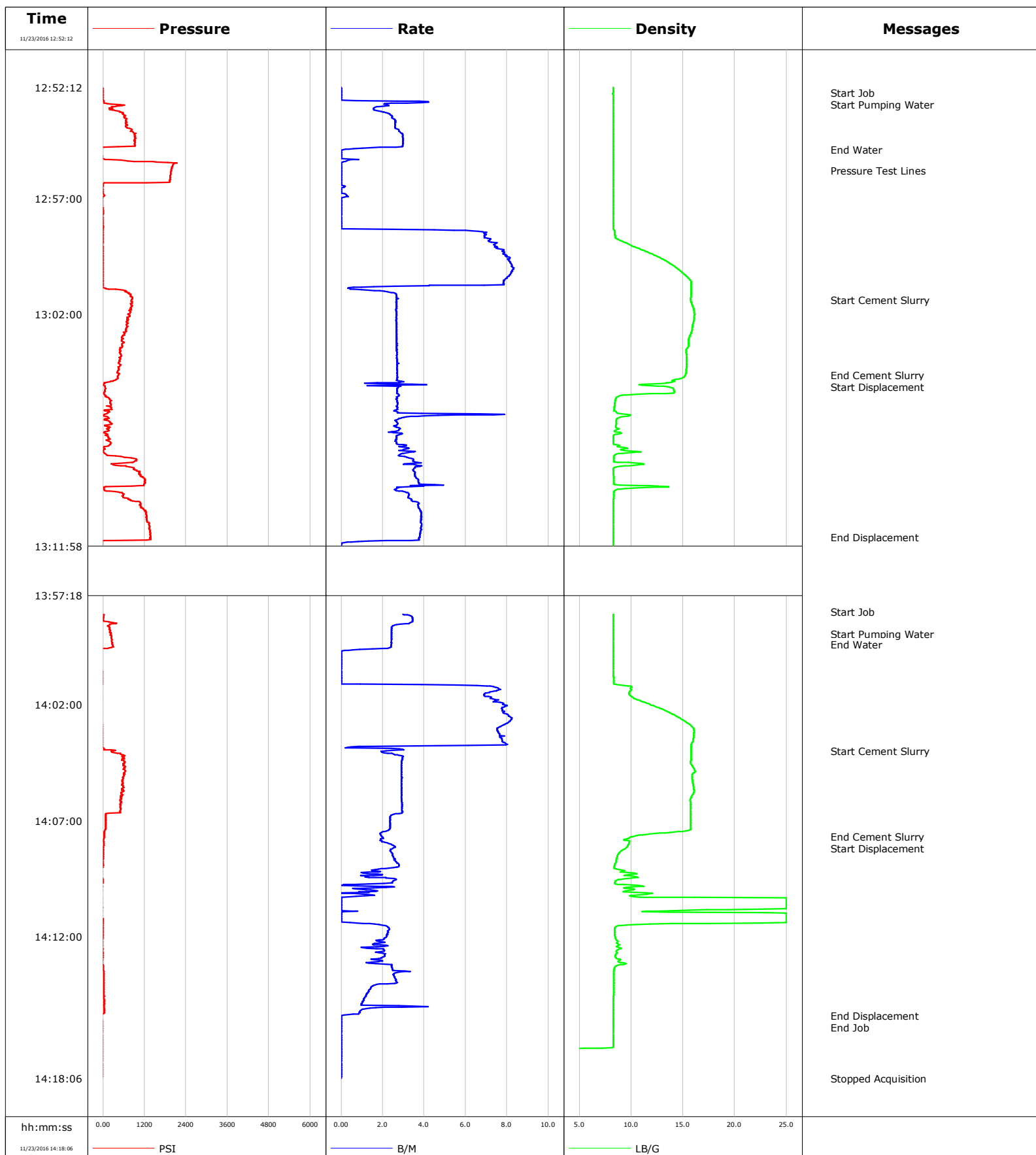


Well Weichel 10-14
Field DJ
Engineer Richard White
Country United States

Client Anadarko
SIR No.
Job Type Nio Sussex Plug
Job Date 11-23-2016



				Customer Anadarko			Job Number	
Well Weichel 10-14		Location (legal)			Schlumberger Location		Job Start Nov/23/2016	
Field DJ		Formation Name/Type		Deviation deg	Bit Size in	Well MD 7286.0 ft	Well TVD 7286.0 ft	
County Weld		State/Province Colorado		BHP psi	BHST degF	BHCT degF	Pore Press. Gradient lb/gal	
Well Master		API/UWI						
Rig Name Concord #8	Drilled For Oil	Service Via Land		Casing/ Liner				
				Depth, ft	Size, in	Weight, lb/ft	Grade	Thread
Offshore Zone	Well Class Old	Well Type Workover		7286.0	4.5	11.6	K55	8RD
				0.0	0.0	0.0		
Drilling Fluid Type		Max. Density lb/gal	Plastic Viscosity cP	Tubing/Drill Pipe				
				T/D	Depth, ft	Size, in	Weight, lb/ft	Grade
Service Line Cementing		Job Type Nio & Sussex Plug		T	7047.0	2.4	4.6	J55
					0.0	0.0	0.0	
Max. Allowed Tub. Press psi	Max. Allowed Ann. Press psi	WH Connection 2 3/8" 4.7# T/S		Perforations/Open Hole				
				Top, ft	Bottom, ft	shot/ft	No. of Shots	Total Interval
				ft	ft			ft
				ft	ft			Diameter
				ft	ft			in
				Treat Down	Displacement bbl	Packer Type	Packer Depth ft	
				Tubing Vol. bbl	Casing Vol. bbl	Annular Vol. bbl	Openhole Vol. bbl	
Casing/Tubing Secured <input type="checkbox"/>		1 Hole Vol. Circulated prior to Cement <input type="checkbox"/>		Casing Tools			Squeeze Job	
Lift Pressure psi				Shoe Type			Squeeze Type	
Pipe Rotated <input type="checkbox"/>		Pipe Reciprocated <input type="checkbox"/>		Shoe Depth ft			Tool Type	
No. Centralizers		Top Plugs	Bottom Plugs	Stage Tool Type			Tool Depth ft	
Cement Head Type				Stage Tool Depth ft			Tail Pipe Size in	
Job Scheduled For Nov/23/2016		Arrived on Location Nov/23/2016		Leave Location Nov/23/2016		Collar Type		Tail Pipe Depth ft
						Collar Depth ft		Sqz. Total Vol. bbl
Date	Time 24-hr clock	Treating Pressure PSI	Flow Rate B/M	Density LB/G	Volume BBL	Message		
11/23/2016	12:52:12	-9	0.0	8.29	0.0			
11/23/2016	12:52:26	-5	0.0	8.29	0.0	Start Job		
11/23/2016	12:52:42	-5	0.0	8.28	0.0			
11/23/2016	12:52:49	27	3.8	8.29	0.1	Start Pumping Water		
11/23/2016	12:53:12	325	1.6	8.28	1.0			
11/23/2016	12:53:42	673	2.6	8.29	2.1			
11/23/2016	12:54:12	948	3.0	8.29	3.5			
11/23/2016	12:54:42	938	3.0	8.29	5.0			
11/23/2016	12:54:52	-50	0.4	8.29	5.3	End Water		
11/23/2016	12:55:12	-27	0.0	8.29	5.3			
11/23/2016	12:55:42	1987	0.0	8.29	5.4			
11/23/2016	12:55:47	1973	0.0	8.29	5.4	Pressure Test Lines		
11/23/2016	12:56:12	1936	0.0	8.29	5.4			
11/23/2016	12:56:42	-9	0.0	8.30	5.4			
11/23/2016	12:57:12	-23	0.0	8.29	5.4			
11/23/2016	12:57:42	-9	0.0	8.29	5.4			
11/23/2016	12:58:12	0	0.0	8.30	5.4			
11/23/2016	12:58:42	-9	7.0	8.47	5.4			
11/23/2016	12:59:12	-14	7.8	10.98	5.4			
11/23/2016	12:59:42	-9	8.1	13.40	5.4			
11/23/2016	13:00:12	-9	8.2	14.95	5.4			

Well			Field	Job Start		Customer	Job Number
Weichel 10-14			DJ	Nov/23/2016		Anadarko	
Date	Time 24-hr clock	Treating Pressure PSI	Flow Rate B/M	Density LB/G	Volume BBL	Message	
11/23/2016	13:01:12	819	2.7	15.78	6.0		
11/23/2016	13:01:21	819	2.7	15.73	6.4	Start Cement Slurry	
11/23/2016	13:01:42	797	2.7	15.98	7.4		
11/23/2016	13:02:12	728	2.7	16.07	8.7		
11/23/2016	13:02:42	655	2.7	15.86	10.0		
11/23/2016	13:03:12	600	2.7	15.55	11.4		
11/23/2016	13:03:42	526	2.7	15.34	12.7		
11/23/2016	13:04:12	494	2.7	15.35	14.1		
11/23/2016	13:04:36	449	2.7	15.24	15.2	End Cement Slurry	
11/23/2016	13:04:40	426	2.7	15.15	15.3	Start Displacement	
11/23/2016	13:04:42	426	2.7	15.09	15.4		
11/23/2016	13:05:12	73	2.7	14.09	16.8		
11/23/2016	13:05:42	224	2.7	8.47	18.1		
11/23/2016	13:06:12	197	2.7	8.55	19.5		
11/23/2016	13:06:42	247	2.7	8.56	21.2		
11/23/2016	13:07:12	60	2.7	8.35	22.6		
11/23/2016	13:07:42	32	2.8	8.68	23.9		
11/23/2016	13:08:12	902	3.4	8.33	25.5		
11/23/2016	13:08:42	916	3.5	8.28	27.3		
11/23/2016	13:09:12	1195	3.7	8.34	29.1		
11/23/2016	13:09:42	572	3.2	8.31	30.7		
11/23/2016	13:10:12	1089	3.7	8.29	32.4		
11/23/2016	13:10:42	1268	3.8	8.30	34.3		
11/23/2016	13:11:12	1341	3.8	8.30	36.2		
11/23/2016	13:11:35	1369	3.8	8.29	37.7	End Displacement	
11/23/2016	13:11:42	1392	3.8	8.30	38.1		
11/23/2016	13:12:12	-9	0.0	8.30	38.4		
11/23/2016	13:12:19	-9	0.0	8.30	38.4	End Job	
11/23/2016	13:12:42	-9	0.0	8.30	38.4		
11/23/2016	13:58:12	22	3.4	8.29	0.4		
11/23/2016	13:58:42	191	2.4	8.30	1.9		
11/23/2016	13:58:57	242	2.4	8.30	2.5	Start Pumping Water	
11/23/2016	13:59:12	251	2.4	8.30	3.1		
11/23/2016	13:59:25	265	2.4	8.30	3.7	End Water	
11/23/2016	13:59:42	-51	0.0	8.30	4.2		
11/23/2016	14:00:12	-33	0.0	8.30	4.2		
11/23/2016	14:00:42	-28	0.0	8.30	4.2		
11/23/2016	14:01:12	-33	7.0	9.68	4.2		
11/23/2016	14:01:42	-28	7.2	10.18	4.2		
11/23/2016	14:02:12	-33	7.8	12.98	4.2		
11/23/2016	14:02:42	-33	8.2	15.10	4.2		
11/23/2016	14:03:12	-28	7.6	16.06	4.2		
11/23/2016	14:03:42	-28	8.0	15.81	4.2		
11/23/2016	14:04:00	292	2.2	15.78	4.5	Start Cement Slurry	
11/23/2016	14:04:12	612	2.8	15.78	5.0		
11/23/2016	14:04:42	635	2.9	15.97	6.4		
11/23/2016	14:05:12	594	2.9	15.90	7.9		
11/23/2016	14:05:42	544	2.9	16.07	9.3		
11/23/2016	14:06:12	530	2.9	15.72	10.8		
11/23/2016	14:06:42	86	2.8	15.76	12.3		
11/23/2016	14:07:12	77	2.4	15.75	13.5		
11/23/2016	14:07:41	40	1.9	10.22	14.5	End Cement Slurry	
11/23/2016	14:07:42	40	2.0	10.07	14.5		
11/23/2016	14:07:43	36	2.0	9.95	14.6	Start Displacement	

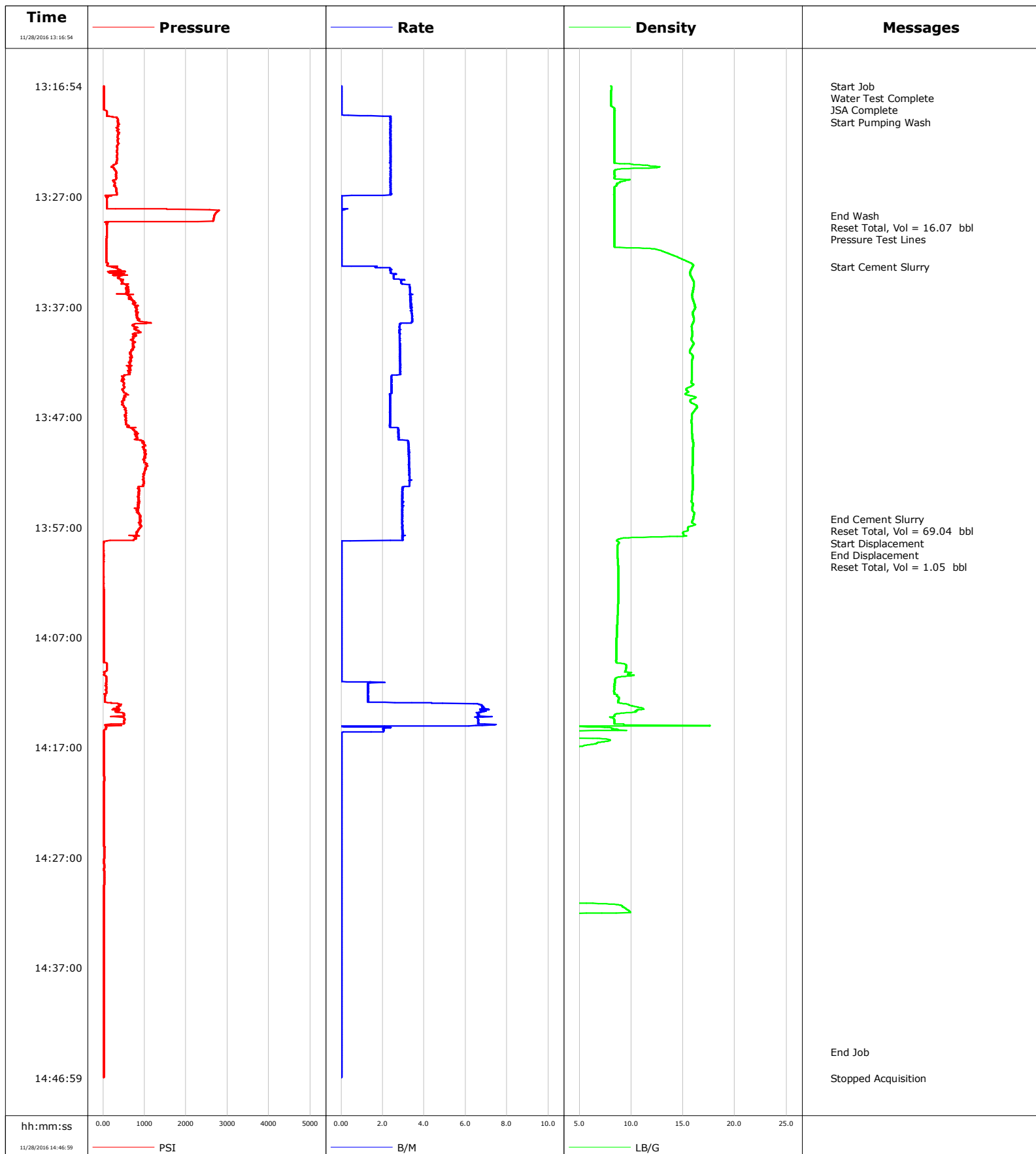
Well			Field		Job Start	Customer		Job Number
Weichel 10-14			DJ		Nov/23/2016	Anadarko		
Date	Time 24-hr clock	Treating Pressure PSI	Flow Rate B/M	Density LB/G	Volume BBL	Message		
11/23/2016	14:08:42	-1	2.6	8.57	16.9			
11/23/2016	14:09:12	-28	1.9	9.08	18.1			
11/23/2016	14:09:42	-5	2.4	8.43	19.1			
11/23/2016	14:10:12	-33	1.5	10.86	19.6			
11/23/2016	14:10:42	-33	0.0	24.99	19.7			
11/23/2016	14:11:12	-33	0.0	24.99	19.8			
11/23/2016	14:11:42	-1	2.3	8.41	20.3			
11/23/2016	14:12:12	-19	1.8	8.70	21.4			
11/23/2016	14:12:42	-1	1.8	8.68	22.3			
11/23/2016	14:13:12	-1	2.4	9.23	23.2			
11/23/2016	14:13:42	17	2.6	8.32	24.5			
11/23/2016	14:14:12	22	1.4	8.33	25.7			
11/23/2016	14:14:42	31	1.1	8.30	26.3			
11/23/2016	14:15:12	31	0.9	8.30	27.0			
11/23/2016	14:15:24	-33	0.0	8.30	27.2	End Displacement		
11/23/2016	14:15:42	-28	0.0	8.30	27.2			
11/23/2016	14:15:44	-28	0.0	8.30	27.2	End Job		
11/23/2016	14:16:42	-19	0.0	8.30	27.2			
11/23/2016	14:17:12	-19	0.0	0.07	27.2			
11/23/2016	14:17:42	-19	0.0	0.06	27.2			

Post Job Summary

Average Pump Rates, bbl/min					Volume of Fluid Injected, bbl				
Slurry 3.1	N2	Mud	Maximum Rate 8.2	Total Slurry 27.2	Mud 0.0	Spacer 24.7	N2		
Treating Pressure Summary, psi					Breakdown Fluid				
Maximum 654	Final -19	Average 214	Bump Plug to	Breakdown	Type	Volume bbl	Density lb/gal		
Avg. N2 Percent %		Designed Slurry Volume 0.0 bbl		Displacement 12.6 bbl		Mix Water Temp degF			
						Cement Circulated to Surface? <input type="checkbox"/>			
						Washed Thru Perfs <input type="checkbox"/>			
Customer or Authorized Representative Nate Windholtz			Schlumberger Supervisor Richard White			Circulation Lost <input type="checkbox"/>	Job Completed <input type="checkbox"/>		
						-	-		

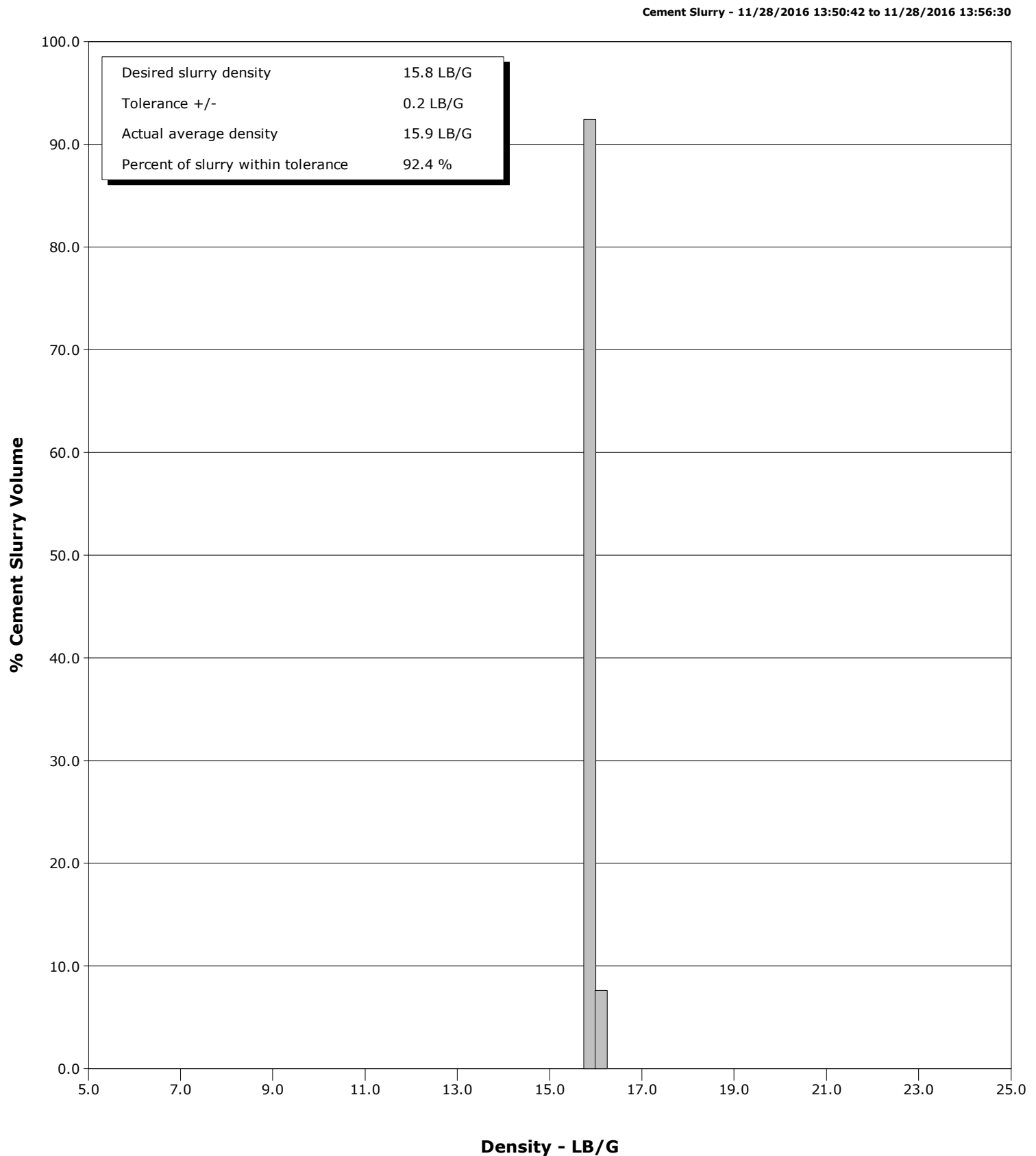
Well Weichel 10-14
Field DJ
Engineer Wayne Silvester
Country United States

Client Anadarko
SIR No. DA6T-00041
Job Type Stub Plug
Job Date 11-28-2016



Well Weichel 10-14
Field DJ
Engineer Wayne Silvester
Country United States

Client Anadarko
SIR No. DA6T-00041
Job Type Stub Plug
Job Date 11-28-2016



Cementing Service Report

				Customer Anadarko			Job Number DA6T-00041	
Well Weichel 10-14		Location (legal) 217304		Schlumberger Location Cheyenne		Job Start Nov/28/2016		
Field DJ		Formation Name/Type		Deviation deg	Bit Size in	Well MD 1500.0 ft		Well TVD 1500.0 ft
County Weld		State/Province Colorado		BHP psi	BHST 250 degF	BHCT 250 degF	Pore Press. Gradient lb/gal	
Well Master 0630744864		API/UWI 512323327						
Rig Name Workover	Drilled For Oil & Gas	Service Via Land	Casing/ Liner					
			Depth, ft	Size, in	Weight, lb/ft	Grade	Thread	
Offshore Zone	Well Class Old	Well Type Other	1500.0	4.5	11.6	N/A	N/A	
			846.0	8.6	24.0	N/A	N/A	
Drilling Fluid Type		Max. Density lb/gal	Plastic Viscosity cP	Tubing/Drill Pipe				
				T/D	Depth, ft	Size, in	Weight, lb/ft	Grade
Service Line Cementing	Job Type Stub Plug			T	1500.0	2.4	4.7	N/A
					0.0	0.0	0.0	
Max. Allowed Tub. Press psi	Max. Allowed Ann. Press psi	WH Connection 2 3/8" 4.7# T/S	Perforations/Open Hole					
			Top, ft	Bottom, ft	shot/ft	No. of Shots	Total Interval	
			ft	ft			ft	
			ft	ft			Diameter	
			ft	ft			in	
			Treat Down Casing	Displacement 1.0 bbl	Packer Type	Packer Depth ft		
			Tubing Vol. 2.0 bbl	Casing Vol. bbl	Annular Vol. bbl	Openhole Vol. bbl		
Casing/Tubing Secured <input checked="" type="checkbox"/>		1 Hole Vol. Circulated prior to Cement <input checked="" type="checkbox"/>		Casing Tools			Squeeze Job	
Lift Pressure psi				Shoe Type			Squeeze Type	
Pipe Rotated <input type="checkbox"/>		Pipe Reciprocated <input type="checkbox"/>		Shoe Depth ft			Tool Type	
No. Centralizers		Top Plugs	Bottom Plugs	Stage Tool Type			Tool Depth ft	
Cement Head Type				Stage Tool Depth ft			Tail Pipe Size in	
Job Scheduled For Nov/28/2016		Arrived on Location Nov/28/2016		Leave Location Nov/28/2016		Collar Type		
						Collar Depth ft		
						Sqz. Total Vol. bbl		
Date	Time 24-hr clock	Flow Rate B/M	Density LB/G	Volume BBL	Pressure PSI	Message		
11/28/2016	13:16:54	0.0	8.06	0.0	17	Started Acquisition		
11/28/2016	13:16:56	0.0	8.06	0.0	17	Start Job		
11/28/2016	13:17:03	0.0	8.06	0.0	17	Water Test Complete		
11/28/2016	13:17:06	0.0	8.06	0.0	17	Start Pumping Wash		
11/28/2016	13:21:55	2.4	8.36	5.3	352			
11/28/2016	13:26:56	0.0	8.35	17.8	77			
11/28/2016	13:28:39	0.0	8.36	17.8	2686	End Wash		
11/28/2016	13:28:42	0.0	8.36	17.8	2682	Reset Total, Vol = 16.07 bbl		
11/28/2016	13:28:46	0.0	8.36	17.8	2672	Pressure Test Lines		
11/28/2016	13:31:57	0.0	13.13	17.8	77			
11/28/2016	13:33:19	1.7	15.94	17.9	210	Start Cement Slurry		
11/28/2016	13:36:58	3.3	16.15	28.4	786			
11/28/2016	13:41:59	2.8	15.84	43.2	645			
11/28/2016	13:47:00	2.4	15.83	55.6	530			
11/28/2016	13:52:01	3.3	15.89	70.4	997			
11/28/2016	13:56:15	2.9	15.96	83.2	910	End Cement Slurry		
11/28/2016	13:56:35	3.0	15.89	84.2	905	Reset Total, Vol = 69.04 bbl		
11/28/2016	13:57:02	3.0	15.45	85.5	878			
11/28/2016	13:57:15	3.0	15.45	86.1	841	Start Displacement		
11/28/2016	13:58:15	0.0	8.62	88.9	86	End Displacement		
11/28/2016	13:58:35	0.0	8.70	88.9	8	Reset Total, Vol = 1.05 bbl		

Well			Field		Job Start	Customer		Job Number	
Weichel 10-14			DJ		Nov/28/2016	Anadarko		DA6T-00041	
Date	Time 24-hr clock	Flow Rate B/M	Density LB/G	Volume BBL	Pressure PSI	Message			
11/28/2016	14:07:04	0.0	8.58	88.9	17				
11/28/2016	14:12:05	1.3	8.36	91.1	81				
11/28/2016	14:17:06	0.0	4.13	122.4	22				
11/28/2016	14:22:07	0.0	0.39	125.2	17				
11/28/2016	14:27:08	0.0	0.14	125.2	22				
11/28/2016	14:32:09	0.0	0.63	125.5	17				
11/28/2016	14:37:10	0.0	-0.00	125.5	17				
11/28/2016	14:42:11	0.0	-0.00	125.5	17				
11/28/2016	14:44:40	0.0	-0.00	125.5	17	End Job			

Post Job Summary

Average Pump Rates, bbl/min					Volume of Fluid Injected, bbl			
Slurry 3.3	N2	Mud	Maximum Rate 7.4	Total Slurry 69.1	Mud 0.0	Spacer 16.2	N2	
Treating Pressure Summary, psi					Breakdown Fluid			
Maximum 2801	Final 17	Average 291	Bump Plug to	Breakdown	Type	Volume bbl	Density lb/gal	
Avg. N2 Percent %		Designed Slurry Volume 69.0 bbl		Displacement 1.0 bbl	Mix Water Temp 65 degF	Cement Circulated to Surface? <input type="checkbox"/>	Volume bbl	
						Washed Thru Perfs <input type="checkbox"/>	To ft	
Customer or Authorized Representative Nate Windholtz			Schlumberger Supervisor Wayne Silvester			Circulation Lost <input type="checkbox"/>	Job Completed <input checked="" type="checkbox"/>	
						-	-	