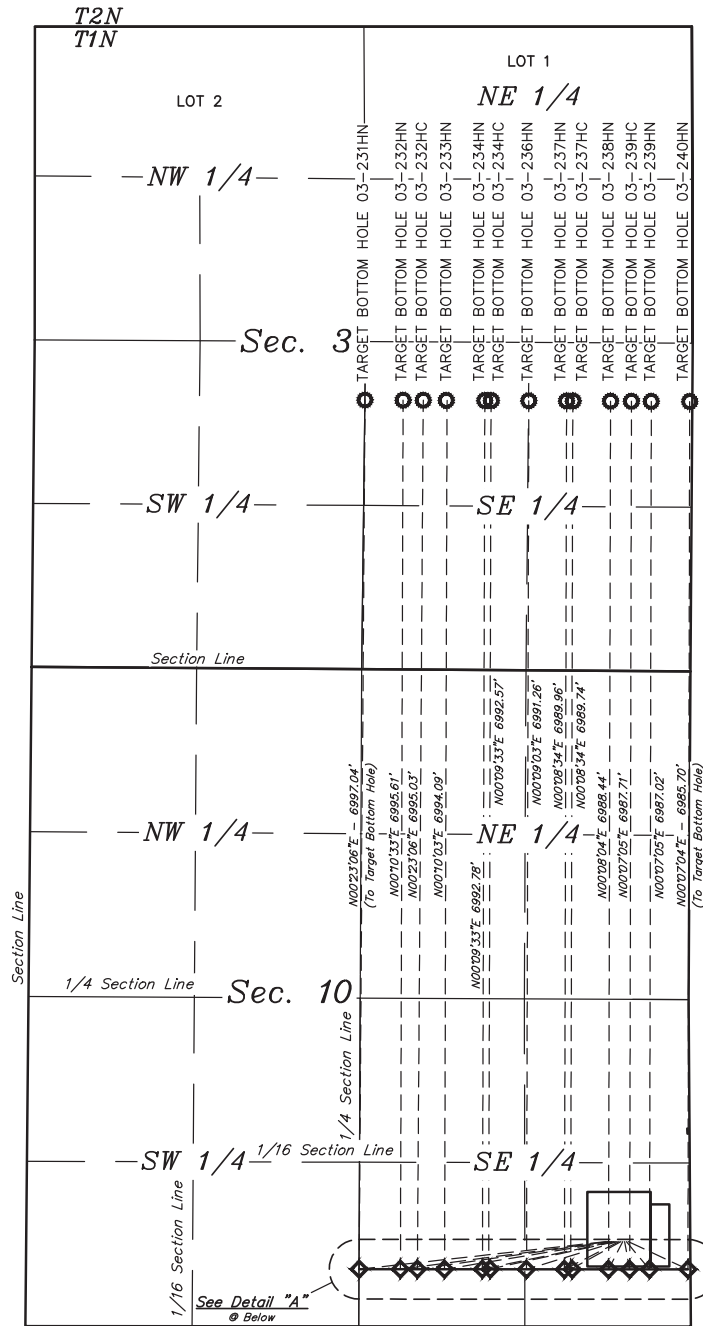


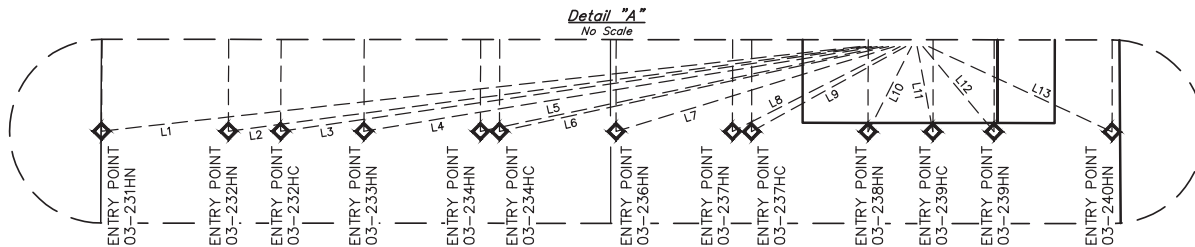


LEGEND:

- ◆ = ENTRY POINT.  
○ = TARGET BOTTOM HOLE.



| LINE TABLE |             |          |
|------------|-------------|----------|
| LINE       | DIRECTION   | LENGTH   |
| L1         | S83°37'38"W | 1998.57' |
| L2         | S82°25'18"W | 1683.75' |
| L3         | S81°49'52"W | 1563.03' |
| L4         | S80°36'48"W | 1362.24' |
| L5         | S78°05'05"W | 1077.13' |
| L6         | S77°41'20"W | 1042.84' |
| L7         | S73°01'08"W | 762.21'  |
| L8         | S63°06'01"W | 492.24'  |
| L9         | S61°07'34"W | 461.27'  |
| L10        | S27°05'06"W | 250.28'  |
| L11        | S10°27'33"E | 226.77'  |
| L12        | S39°50'08"E | 290.49'  |
| L13        | S65°04'25"E | 529.51'  |



REV: 2 04-12-16 C.C. (PAD & SHL CHANGE)

**GREAT WESTERN OPERATING COMPANY**  
HDI KF 03-231HN, 232HN, 232HC, 233HN, 234HN,  
234HC, 236HN, 237HN, 237HC, 238HN, 239HC, 239HN, 240HN,  
OPEN SLOT N & O  
SE 1/4 SE 1/4, SECTION 10, T1N, R65W, 6th P.M.  
WELD COUNTY, COLORADO

|                      |            |  |  |
|----------------------|------------|--|--|
| SURVEYED BY          | DATE       |  |  |
| DALLAS NIELSEN, C.M. | 02-17-16   |  |  |
| DRAWN BY             | DATE       |  |  |
| L.C.S.               | 02-24-16   |  |  |
| SCALE                | 1" = 1000' |  |  |

**MULTI-WELL PLAN**

**FIGURE #5**



**UELS, LLC**  
Corporate Office \* 85 South 200 East  
Vernal, UT 84078 \* (435) 789-1017