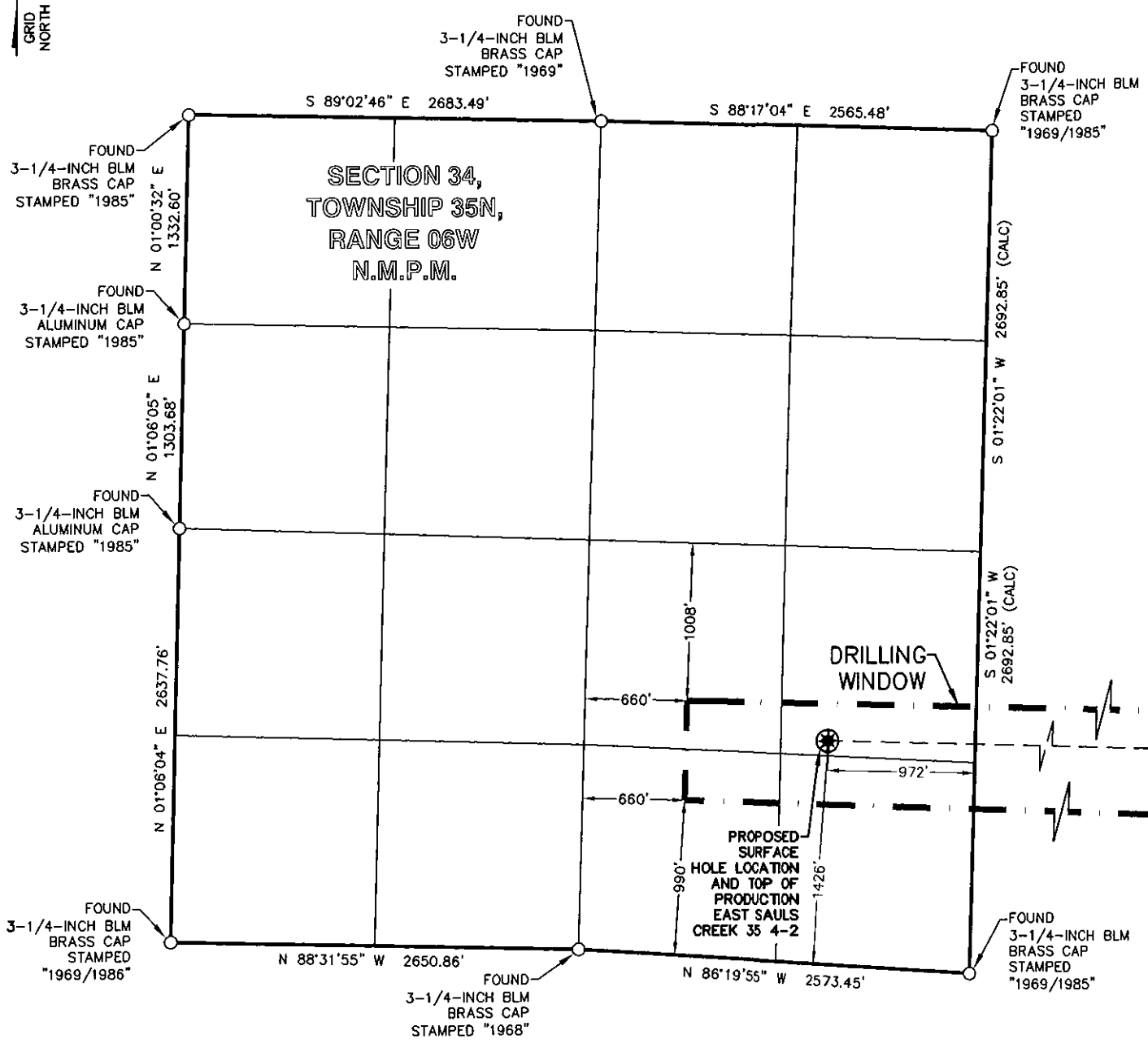


LEGEND
 FOUND MONUMENT O
 PROPOSED SURFACE HOLE LOCATION *
 PROPOSED BOTTOM HOLE LOCATION X



SURVEY NOTES

1. SEE SHEET 3 OF 3 FOR COORDINATE TABLE, SURVEY NOTES, AND SURVEYOR'S CERTIFICATE.

	BP AMERICA PRODUCTION COMPANY US LOWER 48 ONSHORE
	WELL LOCATION PLAT
	EAST SAULS CREEK 35 4-2 PART OF SECTION 34 AND SECTION 35, TOWNSHIP 35N, RANGE 06W, N.M.P.M. LA PLATA COUNTY, COLORADO

DRAWN BY CFW/RLM	CHECKED BY RLT	SCALE 1"=1000'	DATE 12/14/2016	SHEET 1 OF 3	REVISION
---------------------	-------------------	-------------------	--------------------	-----------------	----------

0 500 1000 2000

GRAPHIC SCALE IN FEET

LEGEND

FOUND MONUMENT O

PROPOSED SURFACE HOLE LOCATION *

PROPOSED BOTTOM HOLE LOCATION X

FOUND
3-1/4-INCH BLM
BRASS CAP
STAMPED
"1969/1985"

S 88°46'39" E 2592.82'

FOUND
3-1/4-INCH
BLM ALUMINUM CAP
STAMPED "1986"

S 88°35'21" E 2591.77'

FOUND
3-1/4-INCH
BLM ALUMINUM CAP
STAMPED "1986"

SECTION 35,
TOWNSHIP 35N,
RANGE 06W,
N.M.P.M.

N 01°22'01" E 2692.85' (CALC)

S 00°27'42" W 2680.05'

N 01°22'01" E
2692.85' (CALC)

DRILLING
WINDOW

PROPOSED
BOTTOM HOLE LOCATION
EAST SAULS CREEK 35 4-2

FOUND
3-1/4-INCH
BLM ALUMINUM CAP
STAMPED "1986"

S 00°29'43" W 2689.23'

PROPOSED
SURFACE
HOLE LOCATION
AND TOP OF
PRODUCTION
EAST SAULS
CREEK 35 4-2

N 88°52'06" W 2633.85'

N 88°52'05" W 2634.03'

FOUND
3-1/4-INCH BLM
BRASS CAP
STAMPED
"1969/1985"

FOUND
3-1/4-INCH
BLM ALUMINUM CAP
STAMPED "1985"

FOUND
3-1/4-INCH
BLM ALUMINUM CAP
STAMPED "1985"



BP AMERICA
PRODUCTION COMPANY
US LOWER 48 ONSHORE

WELL LOCATION PLAT

EAST SAULS CREEK 35 4-2

PART OF
SECTION 34 AND SECTION 35, TOWNSHIP 35N,
RANGE 06W, N.M.P.M.
LA PLATA COUNTY, COLORADO

DRAWN BY
CFW/RLM

CHECKED BY
RLT

SCALE
1"=1000'

DATE
12/14/2016

SHEET
2 OF 3

REVISION

EAST SAULS CREEK 35 4-2 WELLBORE DISTANCES	
SHL TO TOP	0'
TOP TO BHL	5,509'

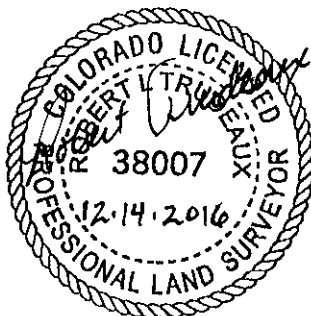
EAST SAULS CREEK 35 4-2	CSZ NAD'83	NAD'83	TIES	SEC / TWP / RNG	ELEVATION
PROPOSED SURFACE HOLE LOCATION (SHL)	N (Y) = 1,220,232.44' E (X) = 2,415,169.42'	LAT. = 37.25422394°N LON. = 107.50949368°W	FSL = 1426' FEL = 972'	SEC 34, TWP 35N, RNG 06W	EXISTING GROUND 7398.46'
PROPOSED TOP OF PRODUCTION (TOP)	N (Y) = 1,220,232.44' E (X) = 2,415,169.42'	LAT. = 37.25422394°N LON. = 107.50949368°W	FSL = 1426' FEL = 972'	SEC 34, TWP 35N, RNG 06W	PROPOSED GRADE 7398.23'
PROPOSED BOTTOM HOLE LOCATION (BHL)	N (Y) = 1,220,059.61' E (X) = 2,420,675.25'	LAT. = 37.25407313°N LON. = 107.49056860°W	FSL = 1407' FEL = 710'	SEC 35, TWP 35N, RNG 06W	


SURVEY NOTES

1. BEARING BASIS FOR THIS SURVEY IS BASED ON THE NORTH AMERICAN DATUM OF 1983, COLORADO STATE PLANE COORDINATE SYSTEM, COLORADO SOUTH, ZONE 0503.
2. ELEVATION BASIS FOR THIS SURVEY IS BASED ON THE NORTH AMERICAN VERTICAL DATUM OF 1988 (GEOID12A).
3. SURVEYED IN THE FIELD ON 10/10/2016.
4. BEARINGS AND DISTANCE SHOWN ARE MEASURED IN THE FIELD UNLESS OTHERWISE NOTED.
5. ALL MEASURED DISTANCES SHOWN ARE GRID USING A COMBINED SCALE FACTOR 0.99964480.
6. GPS INSTRUMENT OPERATOR: KENNETH E. REA
7. GPS PDOP VALUE: 2.2

SURVEYOR'S CERTIFICATE

I, ROBERT L. TRUDEAUX, A PROFESSIONAL LAND SURVEYOR IN THE STATE OF COLORADO, DO HEREBY CERTIFY THAT THIS PLAT WAS PREPARED FROM AN ACTUAL SURVEY PERFORMED BY ME OR UNDER MY DIRECT RESPONSIBILITY, SUPERVISION AND CHECKING, AND IS TRUE AND CORRECT TO THE BEST OF MY KNOWLEDGE AND BELIEF BASED ON THE STANDARDS OF CARE OF PROFESSIONAL LAND SURVEYORS PRACTICING IN THE STATE OF COLORADO. THIS DOES NOT REPRESENT A LAND SURVEY PLAT, IMPROVEMENT SURVEY PLAT, OR MONUMENTED LAND SURVEY AS DEFINED BY COLORADO REVISED STATUTES 38-51-102 AND CANNOT BE RELIED UPON TO DETERMINE OWNERSHIP. THIS SURVEY IS NOT A GUARANTY OR WARRANTY, EITHER EXPRESSED OR IMPLIED.



	BP AMERICA PRODUCTION COMPANY US LOWER 48 ONSHORE
	WELL LOCATION PLAT
EAST SAULS CREEK 35 4-2 PART OF SECTION 34 AND SECTION 35, TOWNSHIP 35N, RANGE 06W, N.M.P.M. LA PLATA COUNTY, COLORADO	

DRAWN BY CFW/RLM	CHECKED BY RLT	SCALE N/A	DATE 12/14/2016	SHEET 3 OF 3	REVISION
---------------------	-------------------	--------------	--------------------	-----------------	----------