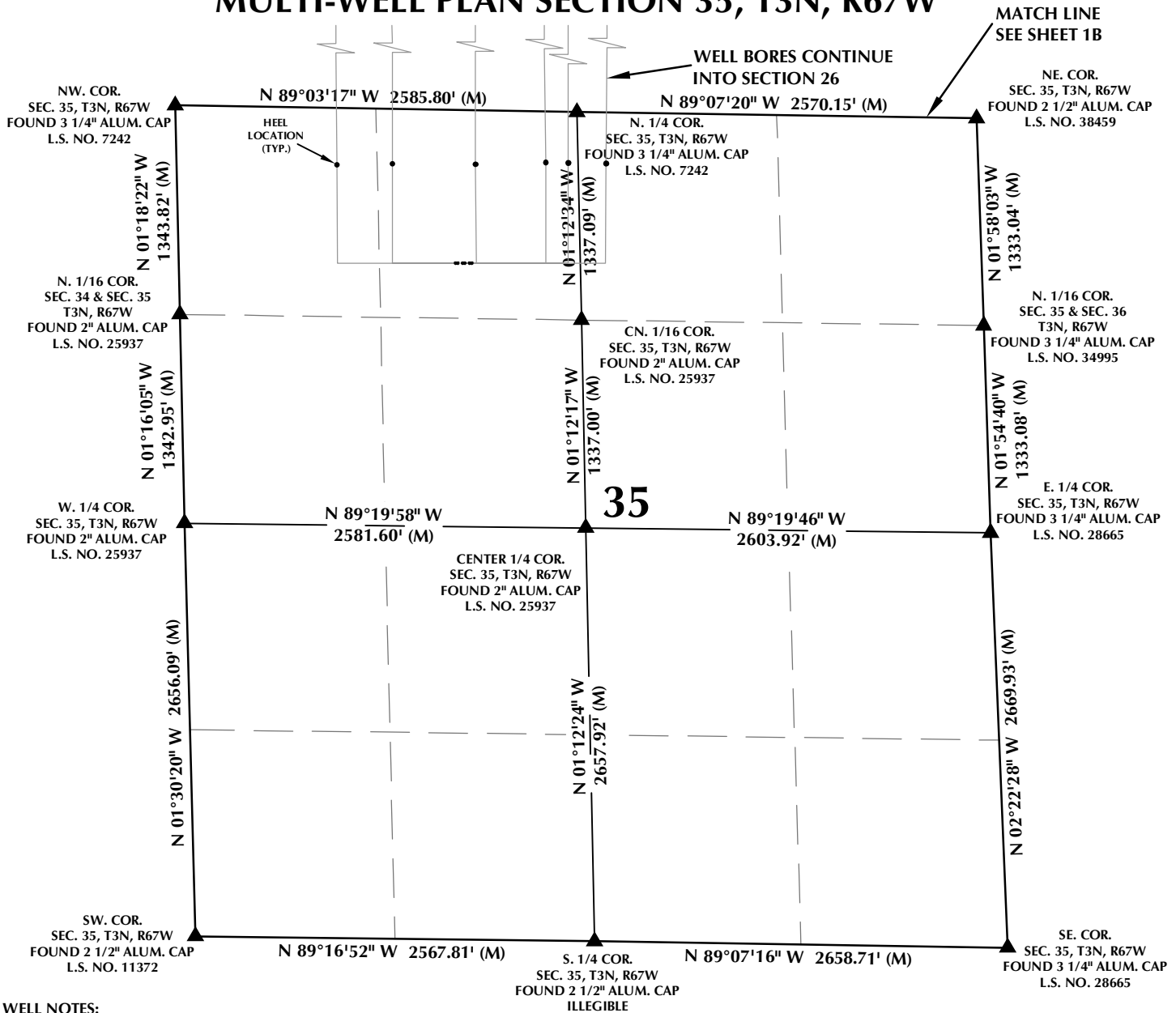


MULTI-WELL PLAN SECTION 35, T3N, R67W

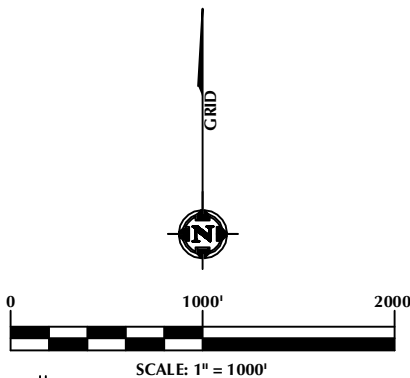


WELL NOTES:

- S.S. MINNOW 14C-14HZ
SURFACE: 984' FNL, 1780' FWL, SEC. 35
BOTTOM HOLE: 756' FSL, 1106' FWL, SEC. 14
- S.S. MINNOW 14N-14HZ
SURFACE: 983' FNL, 1795' FWL, SEC. 35
BOTTOM HOLE: 1061' FSL, 1522' FWL, SEC. 14
- S.S. MINNOW 14N2-14HZ
SURFACE: 983' FNL, 1825' FWL, SEC. 35
BOTTOM HOLE: 1265' FSL, 2072' FWL, SEC. 14
- S.S. MINNOW 23C-14HZ
SURFACE: 983' FNL, 1840' FWL, SEC. 35
BOTTOM HOLE: 1564' FSL, 2390' FWL, SEC. 14
- S.S. MINNOW 23N-14HZ
SURFACE: 982' FNL, 1870' FWL, SEC. 35
BOTTOM HOLE: 1846' FSL, 2546' FEL, SEC. 14
- S.S. MINNOW 10N-14HZ
SURFACE: 982' FNL, 1885' FWL, SEC. 35
BOTTOM HOLE: 2075' FSL, 2231' FEL, SEC. 14

NOTES:

- ▲ INDICATES SECTION CORNER
- INDICATES CALCULATED CORNER
- BASIS OF BEARING DERIVED FROM COLORADO COORDINATE SYSTEM OF 1983 NORTH ZONE.
- ALL MEASURED DISTANCES ARE GRID.
- COMBINED SCALE FACTOR: .99973037 CALCULATED FROM THE N. 1/4 CORNER OF SECTION 35, T3N, R67W
- WELL FOOTAGES ARE MEASURED AT RIGHT ANGLES TO THE SECTION LINES.



WELL PAD - S.S. MINNOW 14N2-14HZ

MULTI-WELL PLAN
S.S. MINNOW 14C-14HZ, S.S. MINNOW 14N-14HZ,
S.S. MINNOW 14N2-14HZ, S.S. MINNOW 23C-14HZ,
S.S. MINNOW 23N-14HZ & S.S. MINNOW 10N-14HZ
LOCATED IN SECTIONS 14, 23, 26 & 35
T3N, R67W, 6TH P.M.
WELD COUNTY, COLORADO

**Kerr-McGee Oil &
Gas Onshore L.P.**
1099 18th Street
Denver, Colorado 80202



CONSULTING, LLC

SHERIDAN OFFICE
1095 Saberton Avenue
Sheridan, Wyoming 82801
Phone 307-674-0609

LOVELAND OFFICE
1635 Foxtrail Drive, Suite 204
Loveland, Colorado 80538
Phone 970-776-4331

DRAFTED BY:	LMO	CHECKED BY:	RKF	SHEET NO:
DATE DRAFTED:	9/27/16	DATE SURVEYED:	9/22/16	1A
REVISED:		FILE NAME:	15-38	1A OF 1

\\ANADARKO\2015\2015_38_KMG_SEC_35_3N_R67W\PLATS\S.S.MINNOW 14N2-14HZ\SS MINNOW M-W PLAN.dwg, 9/27/2016 3:16:14 PM, lisa



NOTES:

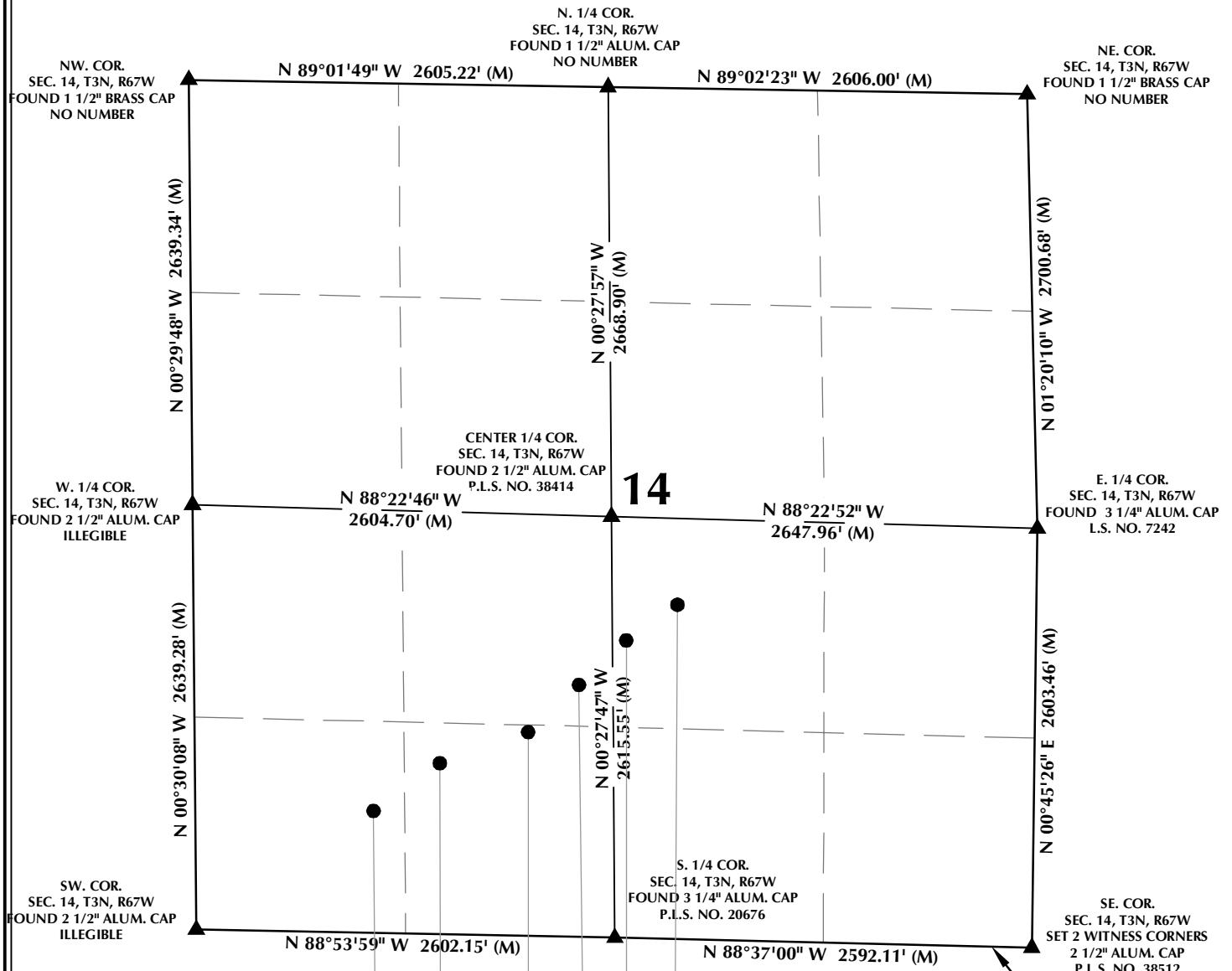
- 

SCALE: 1" = 1000'



DRAFTED BY: LMO	CHECKED BY: RKF	SHEET NO: 1B 1B OF 1
DATE DRAFTED: 9/27/16	DATE SURVEYED: 9/22/16	
REVISED:	FILE NAME: 15-38	

MULTI-WELL PLAN SECTION 14, T3N, R67W

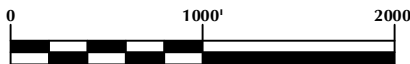


WELL NOTES:

- S.S. MINNOW 14C-14HZ
SURFACE: 984' FNL, 1780' FWL, SEC. 35
BOTTOM HOLE: 756' FSL, 1106' FWL, SEC. 14
- S.S. MINNOW 14N-14HZ
SURFACE: 983' FNL, 1795' FWL, SEC. 35
BOTTOM HOLE: 1061' FSL, 1522' FWL, SEC. 14
- S.S. MINNOW 14N2-14HZ
SURFACE: 983' FNL, 1825' FWL, SEC. 35
BOTTOM HOLE: 1265' FSL, 2072' FWL, SEC. 14
- S.S. MINNOW 23C-14HZ
SURFACE: 983' FNL, 1840' FWL, SEC. 35
BOTTOM HOLE: 1564' FSL, 2390' FWL, SEC. 14
- S.S. MINNOW 23N-14HZ
SURFACE: 982' FNL, 1870' FWL, SEC. 35
BOTTOM HOLE: 1846' FSL, 2546' FEL, SEC. 14
- S.S. MINNOW 10N-14HZ
SURFACE: 982' FNL, 1885' FWL, SEC. 35
BOTTOM HOLE: 2075' FSL, 2231' FEL, SEC. 14

NOTES:

- ▲ INDICATES SECTION CORNER
- INDICATES CALCULATED CORNER
- BASIS OF BEARING DERIVED FROM COLORADO COORDINATE SYSTEM OF 1983 NORTH ZONE.
- ALL MEASURED DISTANCES ARE GRID.
- COMBINED SCALE FACTOR: .99973037 CALCULATED FROM THE N. 1/4 CORNER OF SECTION 35, T3N, R67W
- WELL FOOTAGES ARE MEASURED AT RIGHT ANGLES TO THE SECTION LINES.



WELL PAD - S.S. MINNOW 14N2-14HZ

MULTI-WELL PLAN
S.S. MINNOW 14C-14HZ, S.S. MINNOW 14N-14HZ,
S.S. MINNOW 14N2-14HZ, S.S. MINNOW 23C-14HZ,
S.S. MINNOW 23N-14HZ & S.S. MINNOW 10N-14HZ
LOCATED IN SECTIONS 14, 23, 26 & 35
T3N, R67W, 6TH P.M.
WELD COUNTY, COLORADO

**Kerr-McGee Oil &
Gas Onshore L.P.**
1099 18th Street
Denver, Colorado 80202



CONSULTING, LLC

SHERIDAN OFFICE
1095 Saberton Avenue
Sheridan, Wyoming 82801
Phone 307-674-0609

LOVELAND OFFICE
1635 Foxtrail Drive, Suite 204
Loveland, Colorado 80538
Phone 970-776-4331

DRAFTED BY:	LMO	CHECKED BY:	RKF	SHEET NO:
DATE DRAFTED:	9/27/16	DATE SURVEYED:	9/22/16	1D
REVISED:		FILE NAME:	15-38	1D OF 1