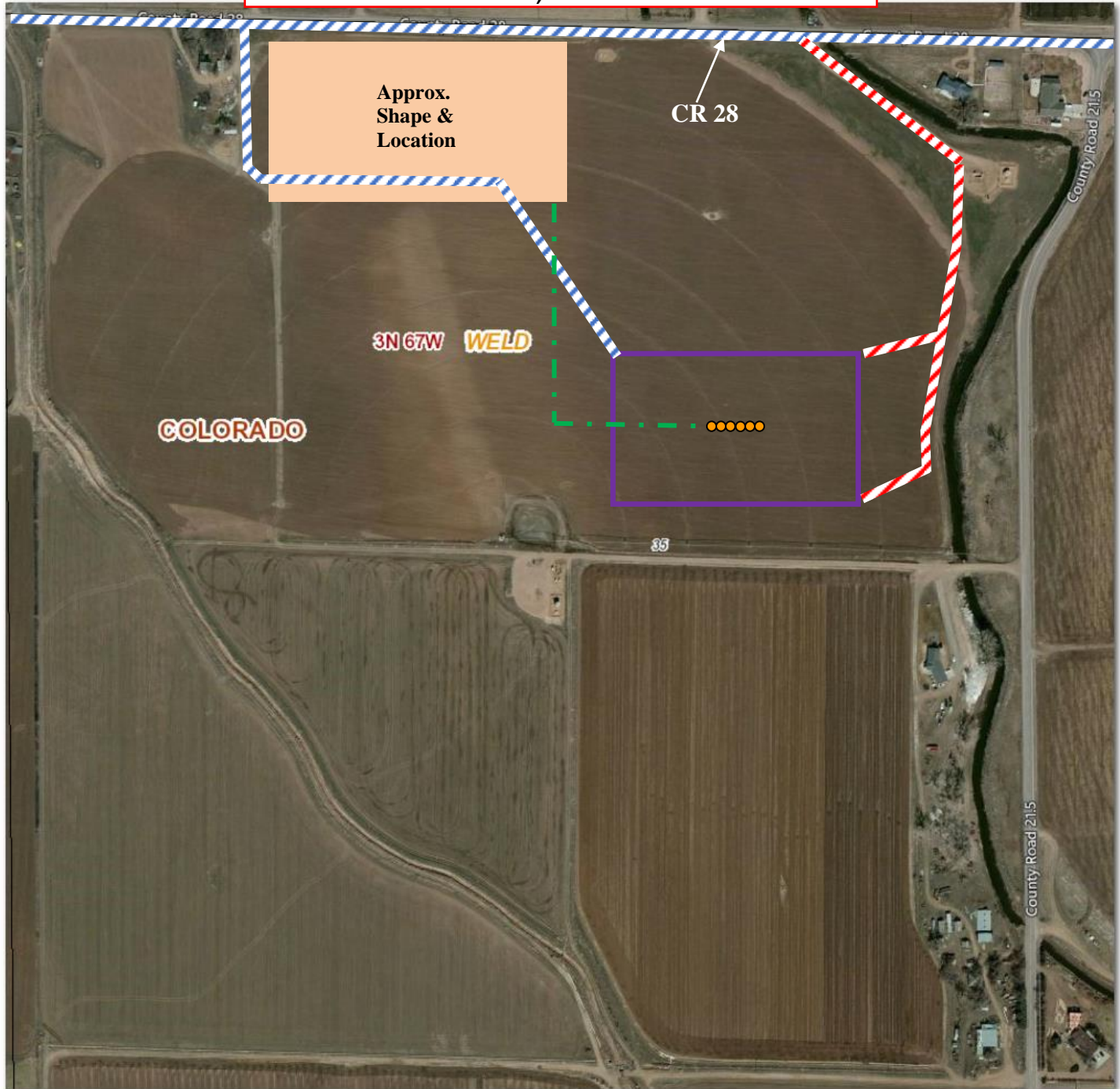


S.S. MINNOW 14N2-14HZ ACCESS ROAD MAP SEC 35, 3N 67W



This aerial photo and all notations and depictions thereon is provided as a courtesy and is intended to be used for general reference purposes only. Kerr-McGee/Anadarko expressly disclaims any and all representations or warranties regarding the accuracy or the completeness of the information appearing on this aerial photo and any reliance on it for any purpose whatsoever is at the sole risk of the party so relying.



Temporary Access Road (for Drilling, Completions, Reclamation)



Permanent Access Road (post-operations)



Disturbance Area

Proposed Facility location



Surface Hole Location



Proposed flowline routes



**S.S. MINNOW 14N2-14HZ
Access Map
Sec. 35-T3N-R67W
Weld County, CO**