



Kerr-McGee Oil & Gas Onshore LP

A subsidiary of Anadarko Petroleum Corporation

1099 18th Street
Denver, CO 80202
720-929-6000

December 27, 2016

Matt Lepore
Director, Colorado Oil and Gas Conservation Commission
Department of Natural Resources
The Chancery Building
1120 Lincoln Street, Suite 801
Denver, CO 80203

Re: **30 Day Certification Letter - 318A.e**
S.S. MINNOW 14N2-14HZ (Doc No. 401148257)
Township 3 North, Range 67 West
Section 35: NENW
Unit Acreage: 440 acres
Unit Spacing: 3N-67W-SEC.14:E2SW;SEC.23:E2W2; SEC. 26: E2W2; SEC. 35; NENW
Weld County, Colorado

Dear Director Lepore:

Kerr McGee Oil and Gas Onshore LP (“KMG”) hereby certifies that KMG owns one hundred percent (100%) of the leasehold interest in the mineral rights in the proposed spacing unit. KMG hereby respectfully requests approval of this boundary well.

If you have any questions or issues regarding this permit, please contact our office.

Sincerely,

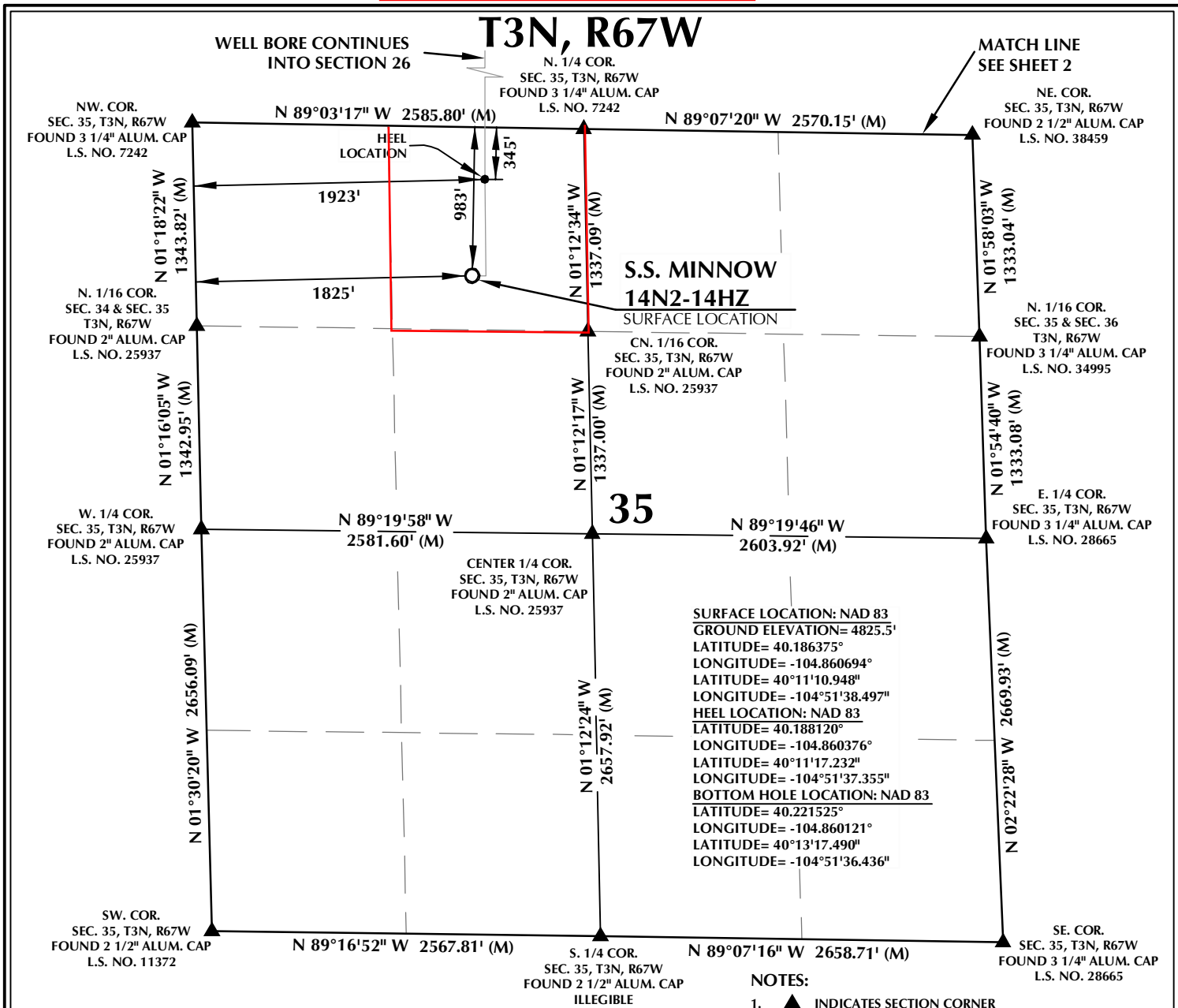
Kerr-McGee Oil and Gas Onshore LP

A handwritten signature in blue ink, appearing to read 'Stephanie Madrid'.

Stephanie Madrid
Regulatory Analyst

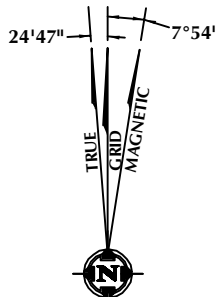
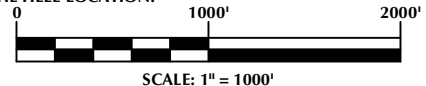
Enclosure

PROPOSED SPACING UNIT



SURFACE LOCATION: NAD 83
 GROUND ELEVATION= 4825.5'
 LATITUDE= 40.186375°
 LONGITUDE= -104.860694°
HEEL LOCATION: NAD 83
 LATITUDE= 40.188120°
 LONGITUDE= -104.860376°
 LATITUDE= 40°11'17.232"
 LONGITUDE= -104°51'37.355"
BOTTOM HOLE LOCATION: NAD 83
 LATITUDE= 40.221525°
 LONGITUDE= -104.860121°
 LATITUDE= 40°13'17.490"
 LONGITUDE= -104°51'36.436"

- NOTES:**
- ▲ INDICATES SECTION CORNER
 - INDICATES CALCULATED CORNER
 - ELEVATION BASED ON NAVD88 (GEOID12B)
 - BASIS OF BEARING DERIVED FROM COLORADO COORDINATE SYSTEM OF 1983 NORTH ZONE.
 - ALL MEASURED DISTANCES ARE GRID.
COMBINED SCALE FACTOR: .99973037 CALCULATED FROM THE N. 1/4 CORNER OF SECTION 35, T3N, R67W
 - OPERATOR: ROB WILSON / PDOP = 1.3
 - SEE ADDENDUM TO WELL LOCATION CERTIFICATE FOR EXISTING IMPROVEMENTS WITHIN 500' OF THE WELL PAD.
 - WELL FOOTAGES ARE MEASURED AT RIGHT ANGLES TO THE SECTION LINES.
 - THE BOTTOM OF HOLE BEARS N00°04'39"W, 12169' FROM THE HEEL LOCATION.



NOTE:
 MAGNETIC NORTH IS CURRENT AS OF 9/22/2016.
 MAGNETIC NORTH CHANGES WEST 0°06' PER YEAR.

CERTIFICATE OF SURVEYOR:

THIS IS TO CERTIFY THAT THE ABOVE PLAT WAS PREPARED FROM FIELD NOTES OF ACTUAL SURVEY MADE BY ME OR UNDER MY SUPERVISION AND THAT THE SAME ARE TRUE AND CORRECT TO THE BEST OF MY KNOWLEDGE AND BELIEF. THIS CERTIFICATE DOES NOT REPRESENT A LAND SURVEY PLAT OR IMPROVEMENT SURVEY PLAT AS DEFINED BY C.R.S. 38-51-302 AND CANNOT BE RELIED UPON TO DETERMINE OWNERSHIP.

Randall K. French
 RANDALL K. FRENCH
 PROFESSIONAL LAND SURVEYOR
 COLORADO REGISTRATION NUMBER 38512
 9/27/16

NOTICE:
 ACCORDING TO COLORADO STATE LAW YOU MUST COMMENCE ANY LEGAL ACTION BASED UPON ANY DEFECT IN THIS SURVEY WITHIN THREE YEARS AFTER YOU FIRST DISCOVER SUCH DEFECT. IN NO EVENT MAY ANY ACTION BASED UPON ANY DEFECT IN THIS SURVEY BE COMMENCED MORE THAN TEN YEARS FROM THE DATE ON THE CERTIFICATION SHOWN HEREON.

WELL PAD - S.S. MINNOW 14N2-14HZ

S.S. MINNOW 14N2-14HZ
 WELL LOCATION CERTIFICATE
 983' FNL & 1825' FWL NENW (SURFACE)
 345' FNL & 1923' FWL NENW (HEEL)
 LOCATED IN SECTION 35
 1265' FSL & 2072' FWL SESW (BOTTOM)
 LOCATED IN SECTION 14
 T3N, R67W, 6TH P.M.
 WELD COUNTY, COLORADO

Kerr-McGee Oil & Gas Onshore L.P.

1099 18th Street
 Denver, Colorado 80202

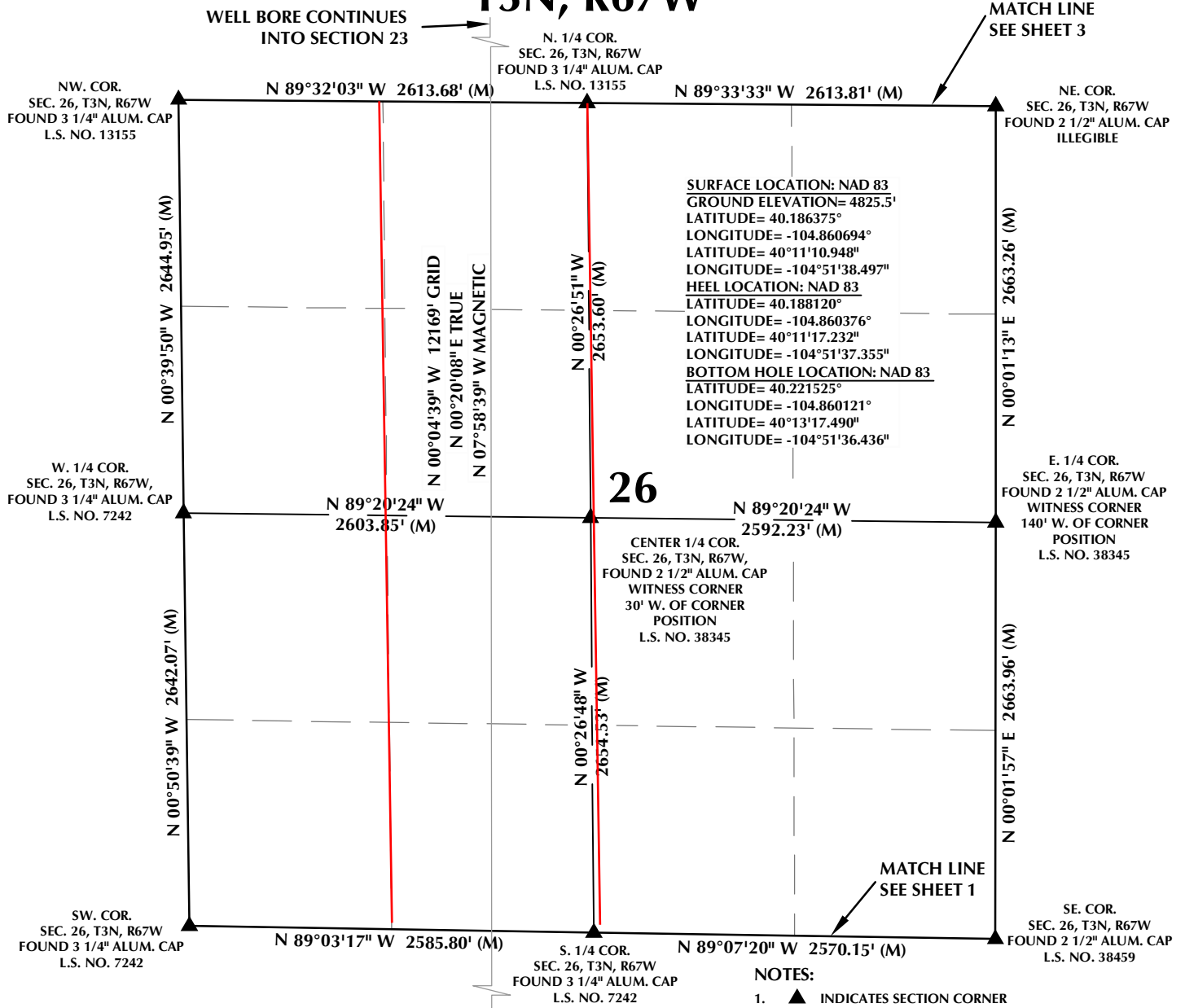
609 CONSULTING, LLC

SHERIDAN OFFICE: 1095 Saberton Avenue, Sheridan, Wyoming 82801, Phone 307-674-0609
 LOVELAND OFFICE: 1635 Foxtrail Drive, Suite 204, Loveland, Colorado 80538, Phone 970-776-4331

DRAFTED BY: LMO	CHECKED BY: RKF	SHEET NO: 1 1 OF 4
DATE DRAFTED: 9/27/16	DATE SURVEYED: 9/22/16	
REVISED:	FILE NAME: 15-38	

K:\ADAR\CO\2015\15-38_KMG_SEC_35_3N_R67W\PLAT\STS.S.S.MINNOW_14N2-14HZ.DWG, 9/28/2016 12:46:13 PM, lbg

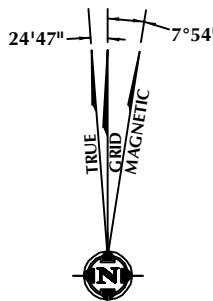
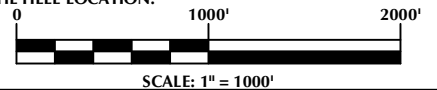
T3N, R67W



SURFACE LOCATION: NAD 83
 GROUND ELEVATION= 4825.5'
 LATITUDE= 40.186375°
 LONGITUDE= -104.860694°
 LATITUDE= 40°11'10.948"
 LONGITUDE= -104°51'38.497"
HEEL LOCATION: NAD 83
 LATITUDE= 40.188120°
 LONGITUDE= -104.860376°
 LATITUDE= 40°11'17.232"
 LONGITUDE= -104°51'37.355"
BOTTOM HOLE LOCATION: NAD 83
 LATITUDE= 40.221525°
 LONGITUDE= -104.860121°
 LATITUDE= 40°13'17.490"
 LONGITUDE= -104°51'36.436"

NOTES:

- ▲ INDICATES SECTION CORNER
- INDICATES CALCULATED CORNER
- ELEVATION BASED ON NAVD88 (GEOID12B)
- BASIS OF BEARING DERIVED FROM COLORADO COORDINATE SYSTEM OF 1983 NORTH ZONE.
- ALL MEASURED DISTANCES ARE GRID.
COMBINED SCALE FACTOR: .99973037 CALCULATED FROM THE N. 1/4 CORNER OF SECTION 35, T3N, R67W
- OPERATOR: ROB WILSON / PDOP = 1.3
- SEE ADDENDUM TO WELL LOCATION CERTIFICATE FOR EXISTING IMPROVEMENTS WITHIN 500' OF THE WELL PAD.
- WELL FOOTAGES ARE MEASURED AT RIGHT ANGLES TO THE SECTION LINES.
- THE BOTTOM OF HOLE BEARS N00°04'39"W, 12169' FROM THE HEEL LOCATION.



NOTE:
 MAGNETIC NORTH IS CURRENT AS OF 9/22/2016.
 MAGNETIC NORTH CHANGES WEST 0°06' PER YEAR.

CERTIFICATE OF SURVEYOR:

THIS IS TO CERTIFY THAT THE ABOVE PLAT WAS PREPARED FROM FIELD NOTES OF ACTUAL SURVEY MADE BY ME OR UNDER MY SUPERVISION AND THAT THESE ARE TRUE AND CORRECT TO THE BEST OF MY KNOWLEDGE AND BELIEF. THIS CERTIFICATE DOES NOT REPRESENT A LAND SURVEY PLAT OR IMPROVEMENT SURVEY PLAT AS DEFINED BY C.R.S. 38-51-202 AND CANNOT BE RELIED UPON TO DETERMINE OWNERSHIP.

Randall K. French
RANDALL K. FRENCH
 PROFESSIONAL LAND SURVEYOR
 COLORADO REGISTRATION NUMBER 38512
 9/27/16

NOTICE:
 ACCORDING TO COLORADO STATE LAW YOU MUST COMMENCE ANY LEGAL ACTION BASED UPON ANY DEFECT IN THIS SURVEY WITHIN THREE YEARS AFTER YOU FIRST DISCOVER SUCH DEFECT. IN NO EVENT MAY ANY ACTION BASED UPON ANY DEFECT IN THIS SURVEY BE COMMENCED MORE THAN TEN YEARS FROM THE DATE ON THE CERTIFICATION SHOWN HEREON.

WELL PAD - S.S. MINNOW 14N2-14HZ

S.S. MINNOW 14N2-14HZ
WELL LOCATION CERTIFICATE
 983' FNL & 1825' FWL NENW (SURFACE)
 345' FNL & 1923' FWL NENW (HEEL)
 LOCATED IN SECTION 35
 1265' FSL & 2072' FWL SESW (BOTTOM)
 LOCATED IN SECTION 14
 T3N, R67W, 6TH P.M.
 WELD COUNTY, COLORADO

Kerr-McGee Oil & Gas Onshore L.P.
 1099 18th Street
 Denver, Colorado 80202



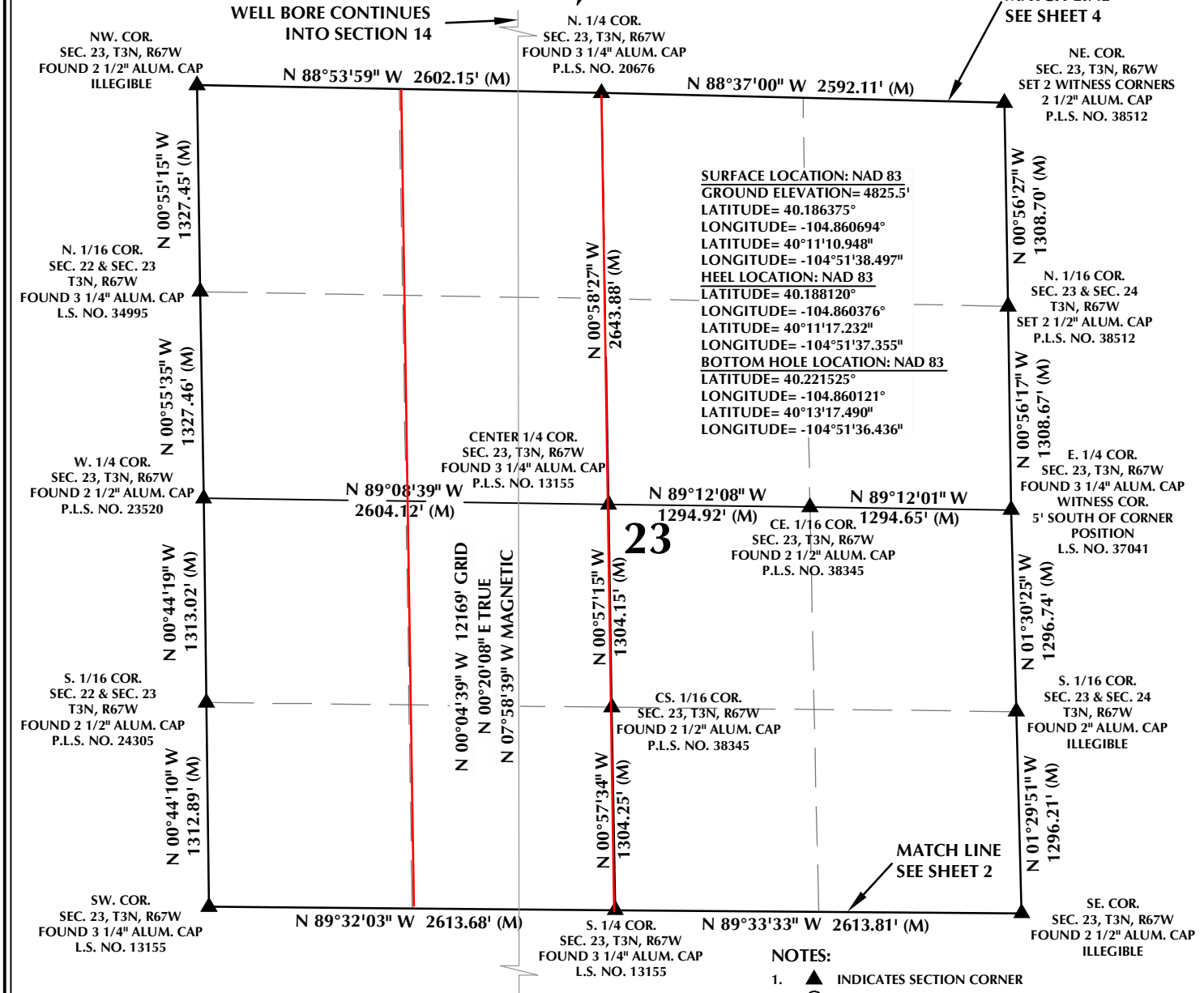
CONSULTING, LLC

SHERIDAN OFFICE
 1095 Saberton Avenue
 Sheridan, Wyoming 82801
 Phone 307-674-0609

LOVELAND OFFICE
 1635 Foxtrail Drive, Suite 204
 Loveland, Colorado 80538
 Phone 970-776-4331

DRAFTED BY: LMO	CHECKED BY: RKF	SHEET NO: 2 2 OF 4
DATE DRAFTED: 9/27/16	DATE SURVEYED: 9/22/16	
REVISED:	FILE NAME: 15-38	

T3N, R67W



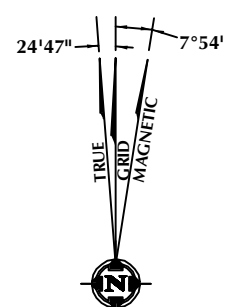
- NOTES:**
- ▲ INDICATES SECTION CORNER
 - INDICATES CALCULATED CORNER
 - ELEVATION BASED ON NAVD88 (GEOID12B)
 - BASIS OF BEARING DERIVED FROM COLORADO COORDINATE SYSTEM OF 1983 NORTH ZONE.
 - ALL MEASURED DISTANCES ARE GRID.
COMBINED SCALE FACTOR: .99973037 CALCULATED FROM THE N. 1/4 CORNER OF SECTION 35, T3N, R67W
 - OPERATOR: ROB WILSON / PDOP = 1.3
 - SEE ADDENDUM TO WELL LOCATION CERTIFICATE FOR EXISTING IMPROVEMENTS WITHIN 500' OF THE WELL PAD.
 - WELL FOOTAGES ARE MEASURED AT RIGHT ANGLES TO THE SECTION LINES.
 - THE BOTTOM OF HOLE BEARS N00°04'39"W, 12169' FROM THE HEEL LOCATION.
- 0 1000' 2000'
SCALE: 1" = 1000'

CERTIFICATE OF SURVEYOR:

THIS IS TO CERTIFY THAT THE ABOVE PLAT WAS PREPARED FROM FIELD NOTES OF ACTUAL MEASUREMENTS MADE UNDER MY SUPERVISION AND THAT THE SAME ARE TRUE AND CORRECT TO THE BEST OF MY KNOWLEDGE AND BELIEF. THIS CERTIFICATE DOES NOT REPRESENT A LAND SURVEY PLAT OR IMPROVEMENT SURVEY PLAT AS DEFINED BY C.R.S. 38-51-302 AND CANNOT BE RELIED UPON TO DETERMINE OWNERSHIP.

Randall K. French
RANDALL K. FRENCH
 PROFESSIONAL LAND SURVEYOR
 COLORADO REGISTRATION NUMBER 18512

NOTICE: ACCORDING TO COLORADO STATE LAW YOU MUST COMMENCE ANY LEGAL ACTION BASED UPON ANY DEFECT IN THIS SURVEY WITHIN THREE YEARS AFTER YOU FIRST DISCOVER SUCH DEFECT. IN NO EVENT MAY ANY ACTION BASED UPON ANY DEFECT IN THIS SURVEY BE COMMENCED MORE THAN TEN YEARS FROM THE DATE ON THE CERTIFICATION SHOWN HEREON.



NOTE:
MAGNETIC NORTH IS CURRENT AS OF 9/22/2016.
MAGNETIC NORTH CHANGES WEST 0°06' PER YEAR.

WELL PAD - S.S. MINNOW 14N2-14HZ

S.S. MINNOW 14N2-14HZ
 WELL LOCATION CERTIFICATE
 983' FNL & 1825' FWL NENW (SURFACE)
 345' FNL & 1923' FWL NENW (HEEL)
 LOCATED IN SECTION 35
 1265' FSL & 2072' FWL SESW (BOTTOM)
 LOCATED IN SECTION 14
 T3N, R67W, 6TH P.M.
 WELD COUNTY, COLORADO

Kerr-McGee Oil & Gas Onshore L.P.

1099 18th Street
 Denver, Colorado 80202

609 CONSULTING, LLC

SHERIDAN OFFICE: 1095 Saberton Avenue, Sheridan, Wyoming 82801, Phone 307-674-0609
 LOVELAND OFFICE: 1635 Foxtrail Drive, Suite 204, Loveland, Colorado 80538, Phone 970-776-4331

DRAFTED BY: LMO	CHECKED BY: RKF	SHEET NO: 3 3 OF 4
DATE DRAFTED: 9/27/16	DATE SURVEYED: 9/22/16	
REVISED:	FILE NAME: 15-38	

K:\LANDARK\2015\15-38_KMG_SEC_35_3N_R67W\PLAT\STS.S.MINNOW_14N2-14HZ.SS MINNOW.dwg, 9/28/2016 12:46:23 PM, lsg

T3N, R67W

N. 1/4 COR.
SEC. 14, T3N, R67W
FOUND 1 1/2" ALUM. CAP
NO NUMBER

NE. COR.
SEC. 14, T3N, R67W
FOUND 1 1/2" BRASS CAP
NO NUMBER

NW. COR.
SEC. 14, T3N, R67W
FOUND 1 1/2" BRASS CAP
NO NUMBER

W. 1/4 COR.
SEC. 14, T3N, R67W
FOUND 2 1/2" ALUM. CAP
ILLEGIBLE

SW. COR.
SEC. 14, T3N, R67W
FOUND 2 1/2" ALUM. CAP
ILLEGIBLE

CENTER 1/4 COR.
SEC. 14, T3N, R67W
FOUND 2 1/2" ALUM. CAP
P.L.S. NO. 38414

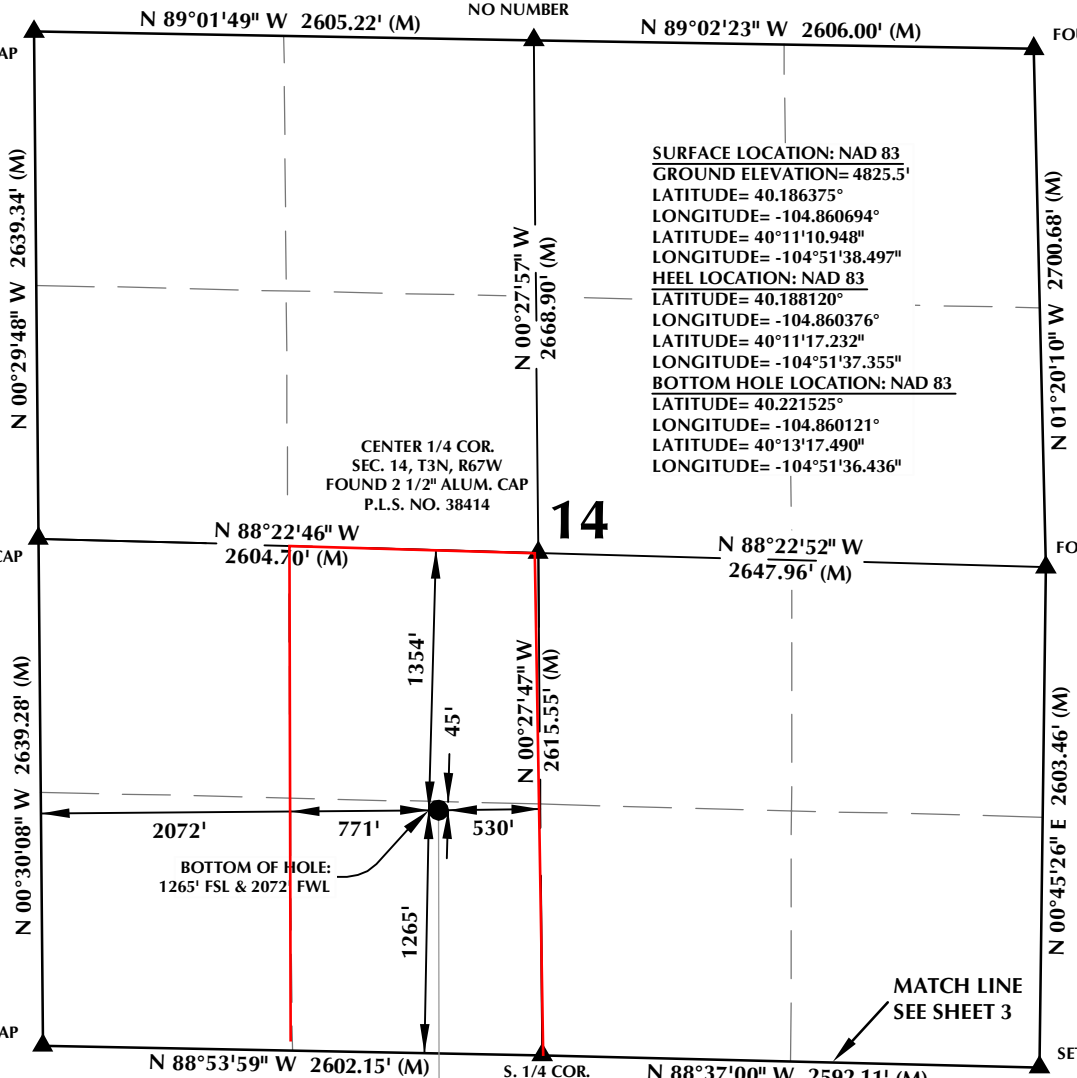
S. 1/4 COR.
SEC. 14, T3N, R67W
FOUND 3 1/4" ALUM. CAP
P.L.S. NO. 20676

E. 1/4 COR.
SEC. 14, T3N, R67W
FOUND 3 1/4" ALUM. CAP
L.S. NO. 7242

SE. COR.
SEC. 14, T3N, R67W
SET 2 WITNESS CORNERS
2 1/2" ALUM. CAP
P.L.S. NO. 38512

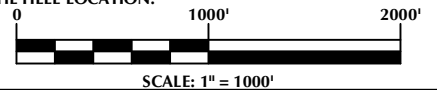
SURFACE LOCATION: NAD 83
GROUND ELEVATION= 4825.5'
LATITUDE= 40.186375°
LONGITUDE= -104.860694°
LATITUDE= 40°11'10.948"
LONGITUDE= -104°51'38.497"
HEEL LOCATION: NAD 83
LATITUDE= 40.188120°
LONGITUDE= -104.860376°
LATITUDE= 40°11'17.232"
LONGITUDE= -104°51'37.355"
BOTTOM HOLE LOCATION: NAD 83
LATITUDE= 40.221525°
LONGITUDE= -104.860121°
LATITUDE= 40°13'17.490"
LONGITUDE= -104°51'36.436"

14



NOTES:

- ▲ INDICATES SECTION CORNER
- INDICATES CALCULATED CORNER
- ELEVATION BASED ON NAVD88 (GEOID12B)
- BASIS OF BEARING DERIVED FROM COLORADO COORDINATE SYSTEM OF 1983 NORTH ZONE.
- ALL MEASURED DISTANCES ARE GRID.
COMBINED SCALE FACTOR: .99973037 CALCULATED FROM THE N. 1/4 CORNER OF SECTION 35, T3N, R67W
OPERATOR: ROB WILSON / PDOP = 1.3
- SEE ADDENDUM TO WELL LOCATION CERTIFICATE FOR EXISTING IMPROVEMENTS WITHIN 500' OF THE WELL PAD.
- WELL FOOTAGES ARE MEASURED AT RIGHT ANGLES TO THE SECTION LINES.
- THE BOTTOM OF HOLE BEARS N00°04'39"W, 12169' FROM THE HEEL LOCATION.

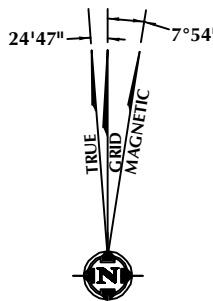


CERTIFICATE OF SURVEYOR:

THIS IS TO CERTIFY THAT THE ABOVE PLAT WAS PREPARED FROM FIELD NOTES OF ACTUAL SURVEY MADE BY ME OR UNDER MY SUPERVISION AND THAT THE SAME ARE TRUE AND CORRECT TO THE BEST OF MY KNOWLEDGE AND BELIEF. THIS CERTIFICATE DOES NOT REPRESENT A LAND SURVEY PLAT OR IMPROVEMENT SURVEY PLAT AS DEFINED BY C.R.S. 38-51-302 AND CANNOT BE RELIED UPON TO DETERMINE OWNERSHIP.

Randall K. French
PROFESSIONAL LAND SURVEYOR
38512
9/27/16

NOTE:
ACCORDING TO COLORADO STATE LAW YOU MUST COMMENCE ANY LEGAL ACTION BASED UPON ANY DEFECT IN THIS SURVEY WITHIN THREE YEARS AFTER YOU FIRST DISCOVER SUCH DEFECT. IN NO EVENT MAY ANY ACTION BASED UPON ANY DEFECT IN THIS SURVEY BE COMMENCED MORE THAN TEN YEARS FROM THE DATE ON THE CERTIFICATION SHOWN HEREON.



NOTE:
MAGNETIC NORTH IS CURRENT AS OF 9/22/2016.
MAGNETIC NORTH CHANGES WEST 0°06' PER YEAR.

WELL PAD - S.S. MINNOW 14N2-14HZ

S.S. MINNOW 14N2-14HZ
WELL LOCATION CERTIFICATE
983' FNL & 1825' FWL NENW (SURFACE)
345' FNL & 1923' FWL NENW (HEEL)
LOCATED IN SECTION 35
1265' FSL & 2072' FWL SESW (BOTTOM)
LOCATED IN SECTION 14
T3N, R67W, 6TH P.M.
WELD COUNTY, COLORADO

**Kerr-McGee Oil &
Gas Onshore L.P.**
1099 18th Street
Denver, Colorado 80202



CONSULTING, LLC

SHERIDAN OFFICE
1095 Saberton Avenue
Sheridan, Wyoming 82801
Phone 307-674-0609

LOVELAND OFFICE
1635 Foxtrail Drive, Suite 204
Loveland, Colorado 80538
Phone 970-776-4331

DRAFTED BY: LMO	CHECKED BY: RKF	SHEET NO: 4
DATE DRAFTED: 9/27/16	DATE SURVEYED: 9/22/16	
REVISED:	FILE NAME: 15-38	4 OF 4