

2" = 100' FEET MD

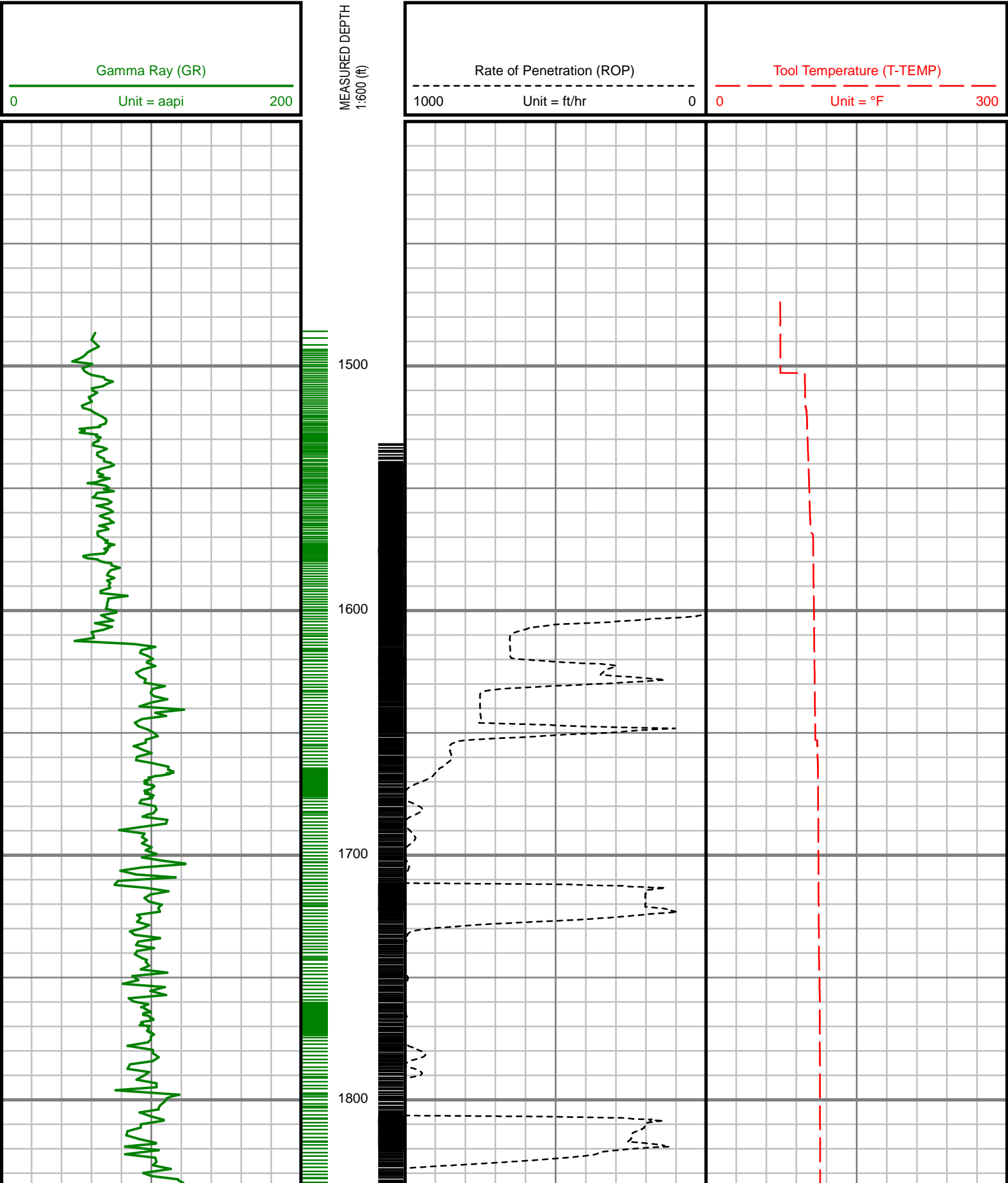
COMPANY : EXTRACTION OIL AND GAS				COMPANY : EXTRACTION OIL AND GAS			
WELL : WINDER SOUTH 5				WELL : WINDER SOUTH 5			
FIELD : WATTENBURG				FIELD : WATTENBURG			
COUNTY : WELD				COUNTY : WELD			
STATE : COLORADO				STATE : COLORADO			
COUNTRY : U.S.A.				COUNTRY : U.S.A.			
UWI : 05-123-43407				UWI : 05-123-43407			
WELL LOCATION				OTHER SERVICES			
LAT:40°30'9.626"N LONG:104°53'25.739"W				DIRECTIONAL			
N:1426547.18 ft E:3169498.36 ft				ROP			
SEC:9				TWP:T6N			
RANGE:R67W							
DEPTH REF. : RKB				RKB to Ground Level			
REF. HEIGHT : 25.000 ft				G.L. to MEAN SEA LEVEL			
GROUND LEVEL : 4855.000 ft							
BOREHOLE RECORD			DEVIATION RECORD				
HOLE SIZE in	FROM ft	TO ft	INCLINATION deg	FROM ft	TO ft		
12.25	0	1602	0 - 7	1602	1731		
7.875	1602	17145	7 - 14	1731	3560		
			14 - 14	3560	6950		
			14 - 90	6950	7730		
			90 - 92	7730	17145		
CASING RECORD							
CASING SIZE in	FROM ft	TO ft					
9.625	0	1602					

Remarks
EXTRACTION OIL AND GAS PRODUCTION AFE# XXX
SCIENTIFIC DRILLING INTERNATIONAL JOB# 383174
ALL REFERENCES IN THE DEPTH TRACK ARE AT BIT DEPTH.
ALL DATA IS MEMORY DATA UNLESS STATED OTHERWISE.
FLAT AVERAGE FILTER OF 1.00 FT APPLIED TO GAMMA RAY CURVE
FLAT AVERAGE FILTER OF 1.00 FT APPLIED TO RATE OF PENETRATION CURVE
RUN #1 : SENSORS S/N: MP6 = 391 / MWD EYE = 182 / GAMMA RAY = 1335
BIT TO SENSOR OFFSETS: MWD EYE = 59.10 FT. / GAMMA = 46.51 FT.
RUN #2 : SENSORS S/N: MP6 = 391 / MWD EYE = 182 / GAMMA RAY = 1335
BIT TO SENSOR OFFSETS: MWD EYE = 59.14 FT. / GAMMA = 46.55 FT.
RUN #3 : SENSORS S/N: MP6 = 889 / MWD EYE = 122 / GAMMA RAY = 1188
BIT TO SENSOR OFFSETS: MWD EYE = 64.17 FT. / GAMMA = 51.58 FT.
RUN #4 ST1 : SENSORS S/N: MP6 = 889 / MWD EYE = 122 / GAMMA RAY = 1188
BIT TO SENSOR OFFSETS: MWD EYE = 59.14 FT. / GAMMA = 46.55 FT.
RUN #5 ST1: SENSORS S/N: MP6 = 391 / MWD EYE = 182 / GAMMA RAY = 1335
BIT TO SENSOR OFFSETS: MWD EYE = 59.31 FT. / GAMMA = 46.72 FT.
RUN #6 ST2: SENSORS S/N: MP6 = 391 / MWD EYE = 182 / GAMMA RAY = 1335
BIT TO SENSOR OFFSETS: MWD EYE = 59.31 FT. / GAMMA = 46.72 FT.

[illegible]

All interpretations are opinions based on inferences from electrical or other measurements and we cannot, and do not guarantee the accuracy or correctness of any interpretations, and we shall not, except in the case of gross or willful negligence on our part, be liable or responsible for any loss, costs, damages or expenses incurred or sustained by anyone resulting from any interpretation made by any of our officers, agents or employees. These interpretations are also subject to our general terms and conditions as set out in our current price schedule.

EXTRACTION OIL & GAS
WINDER SOUTH 5, WATTENBURG FIELD
WELD COUNTY, CO
05-123-43407





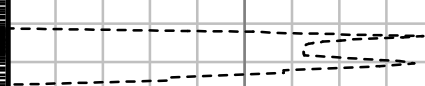
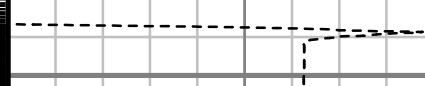
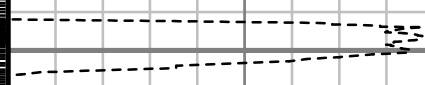
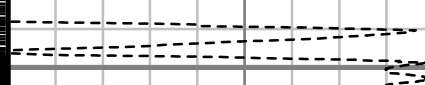
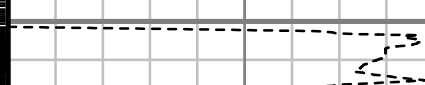
1900

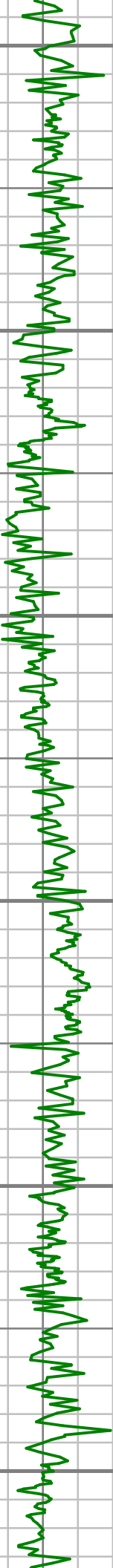
2000

2100

2200

2300





2400

2500

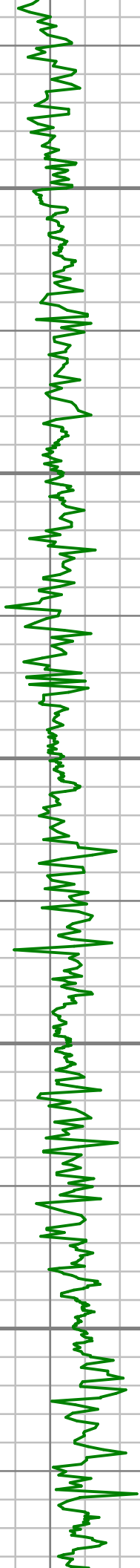
2600

2700

2800

2900





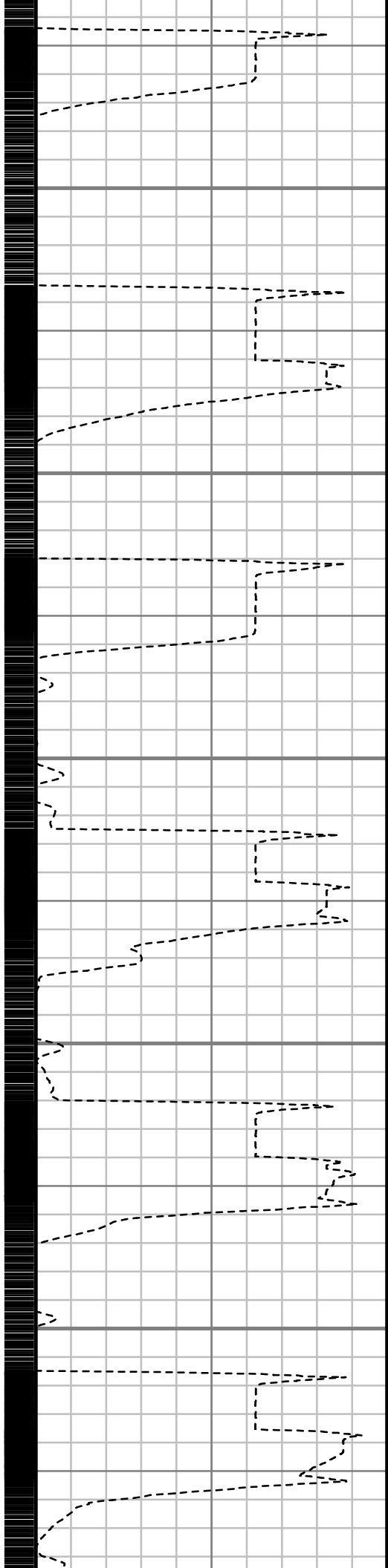
3000

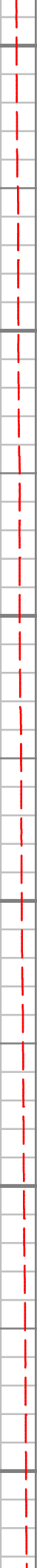
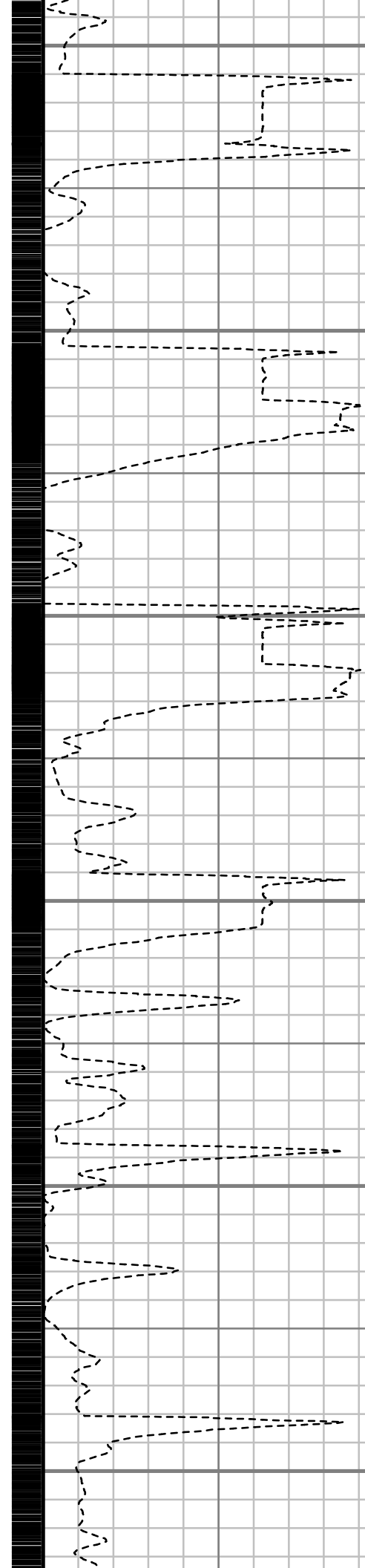
3100

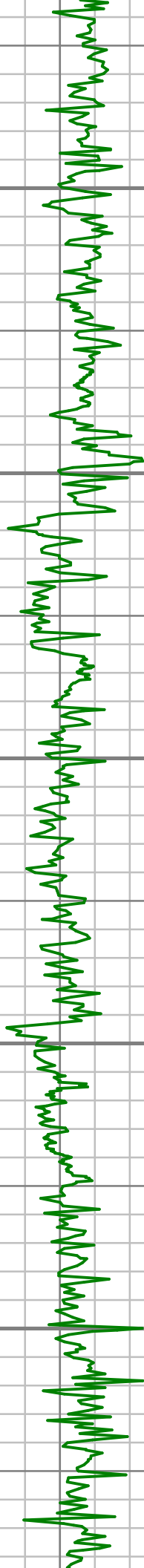
3200

3300

3400







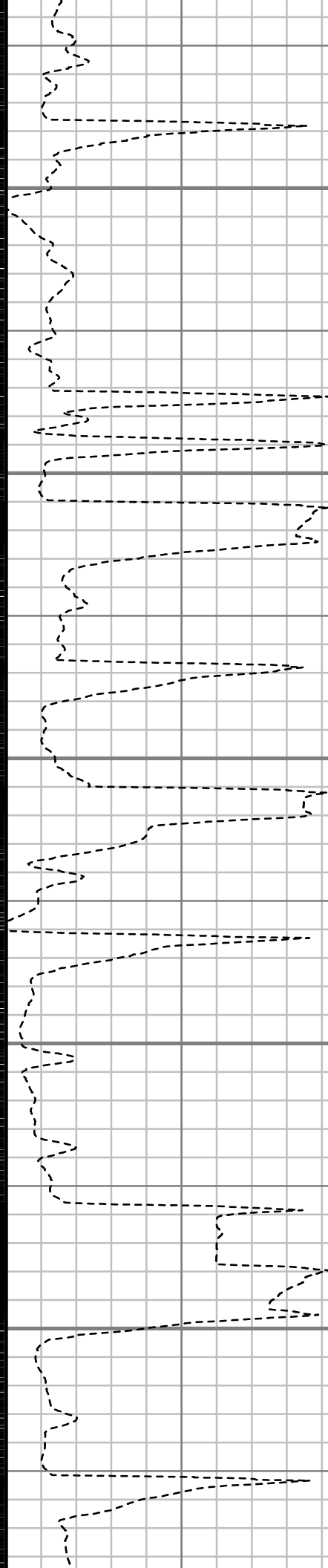
4100

4200

4300

4400

4500





4600

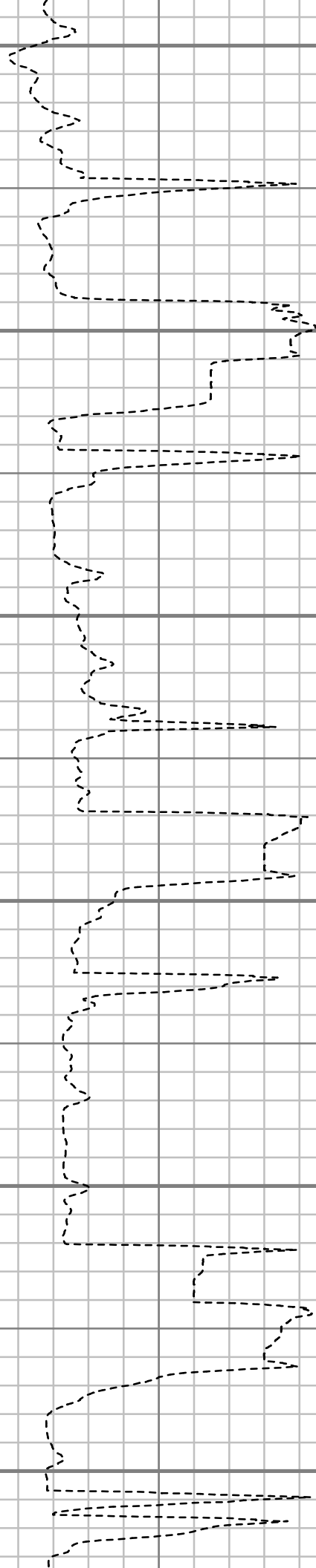
4700

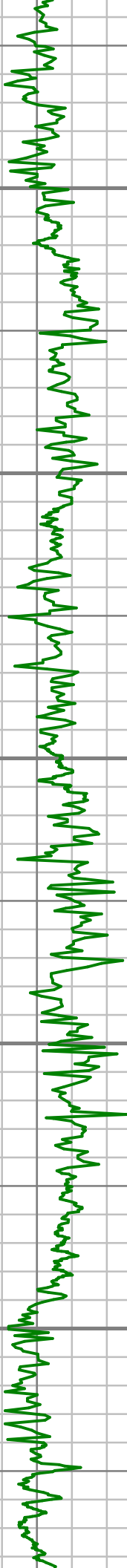
4800

4900

5000

5100





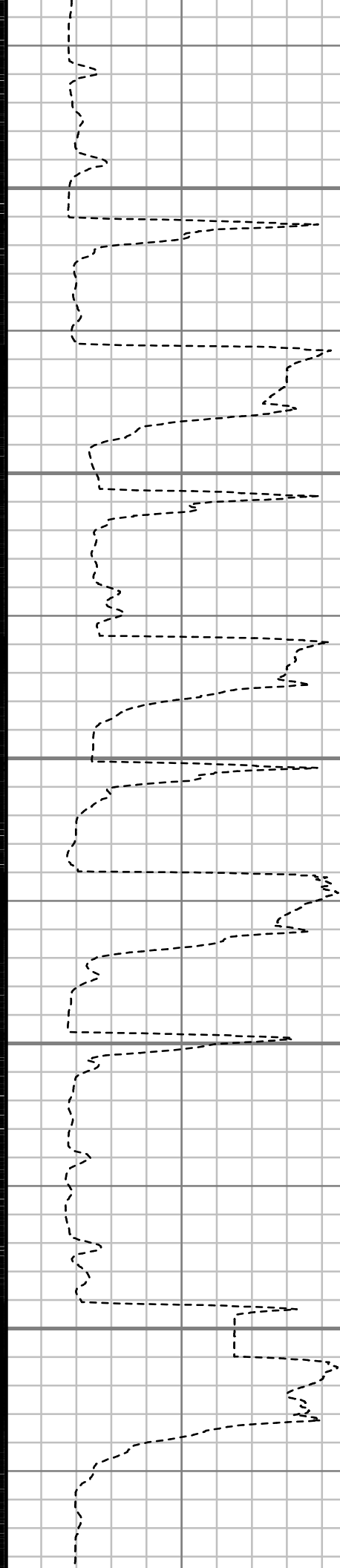
5200

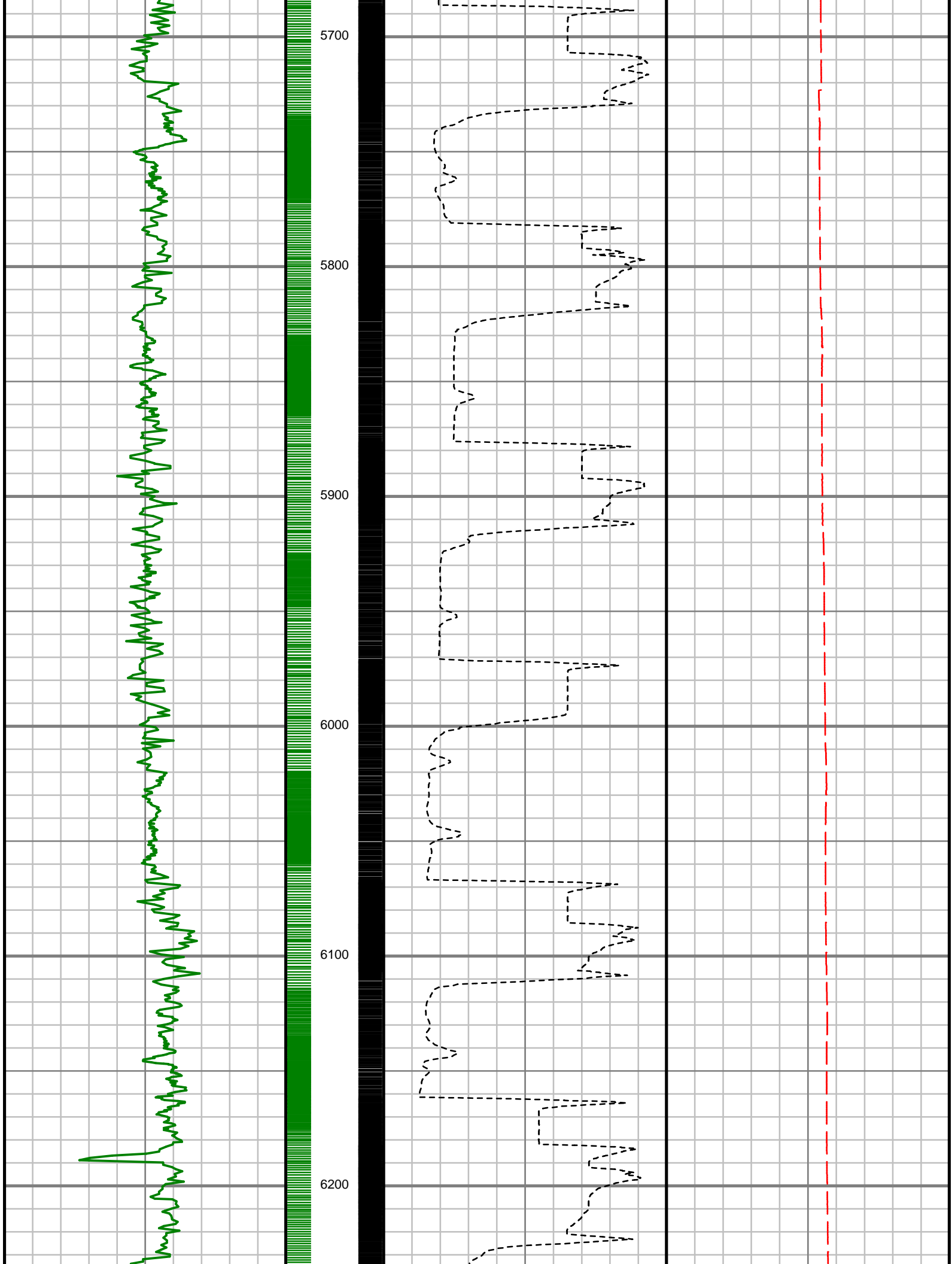
5300

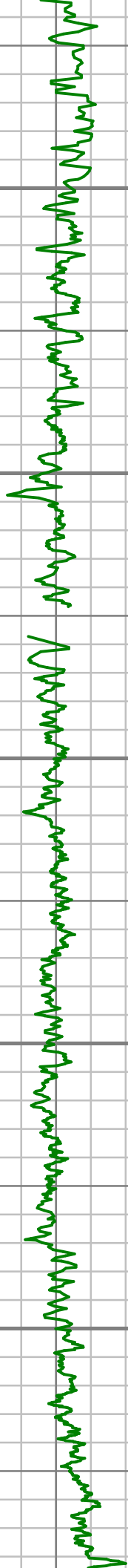
5400

5500

5600







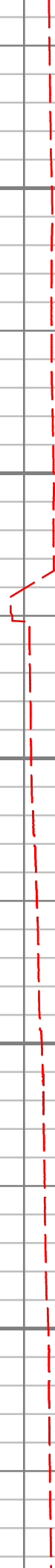
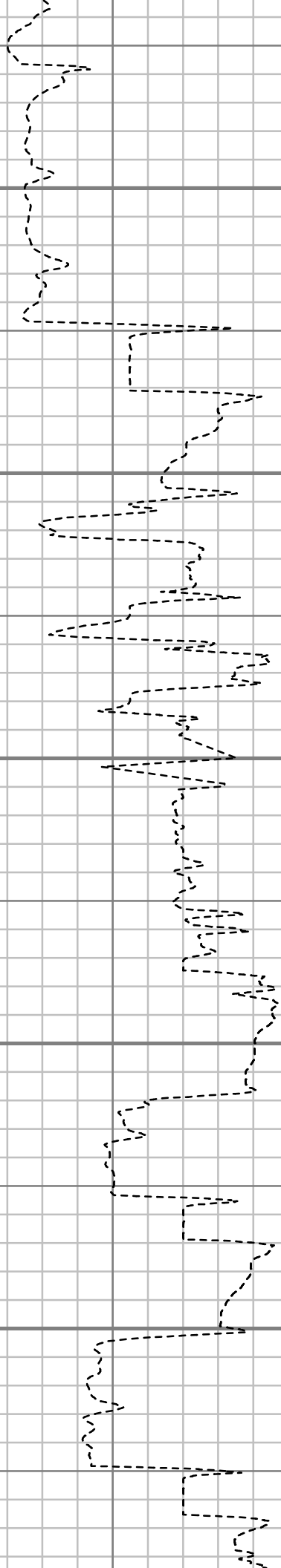
6300

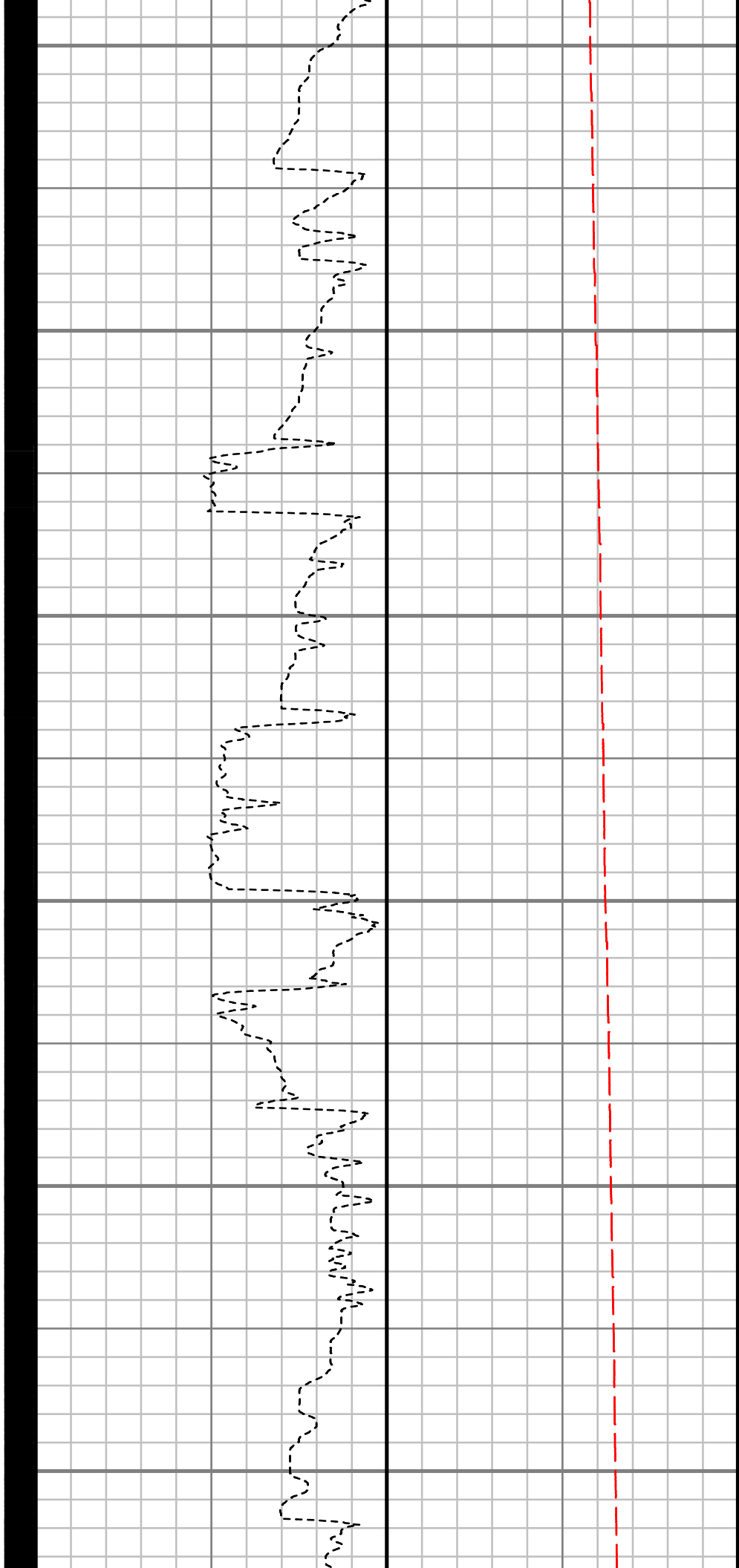
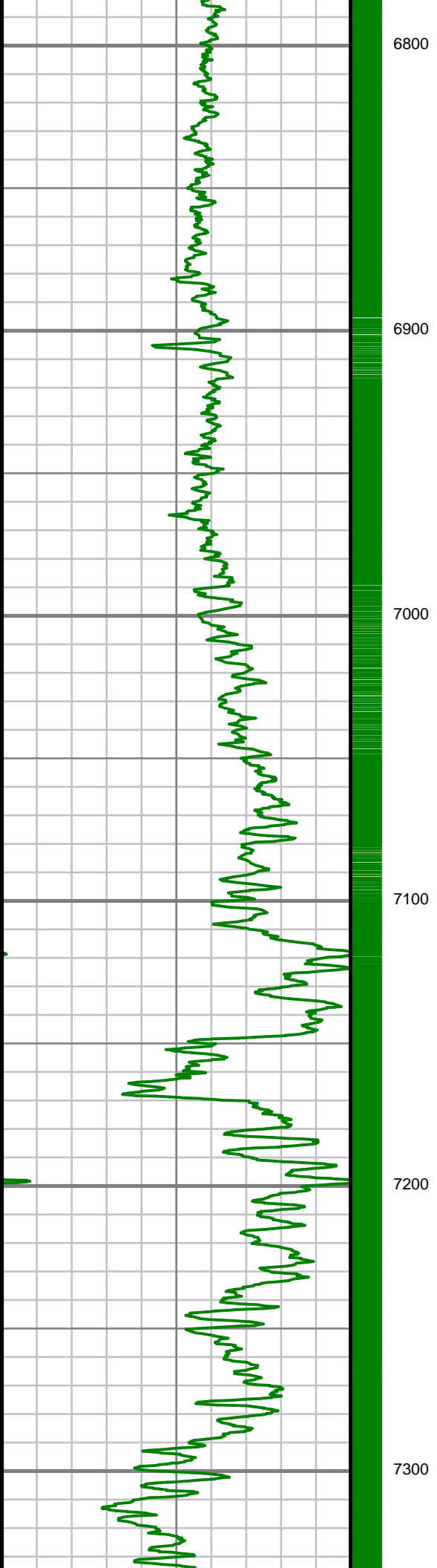
6400

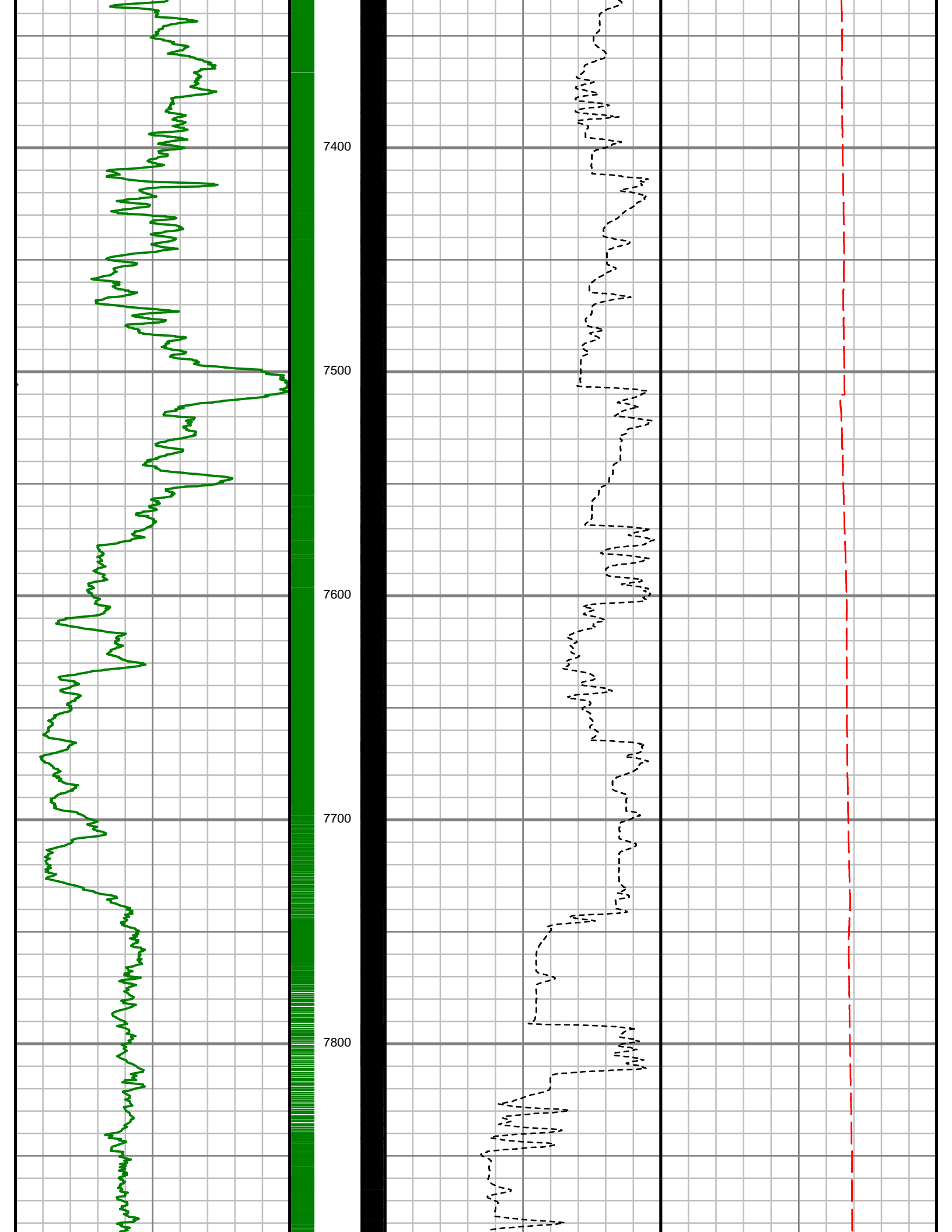
6500

6600

6700

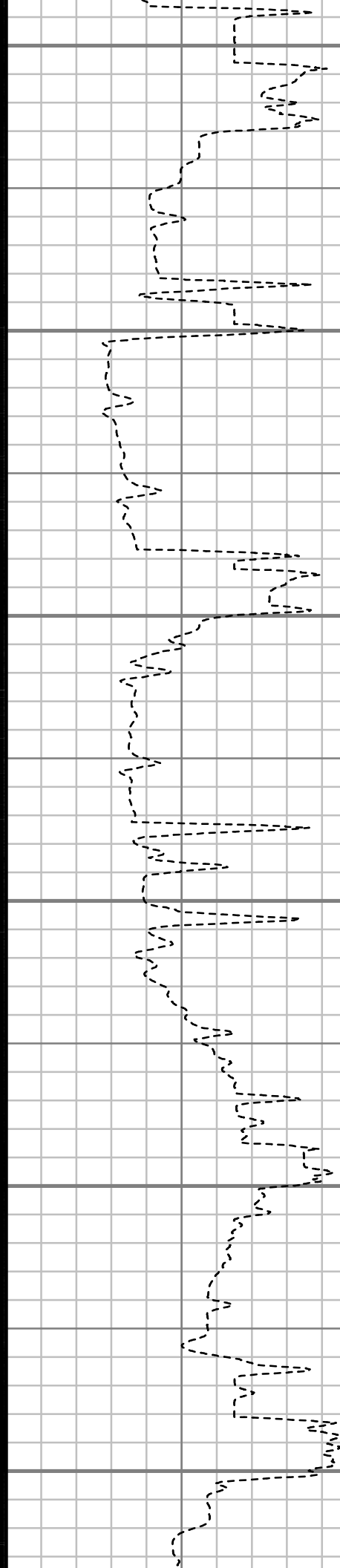








7900
8000
8100
8200
8300
8400





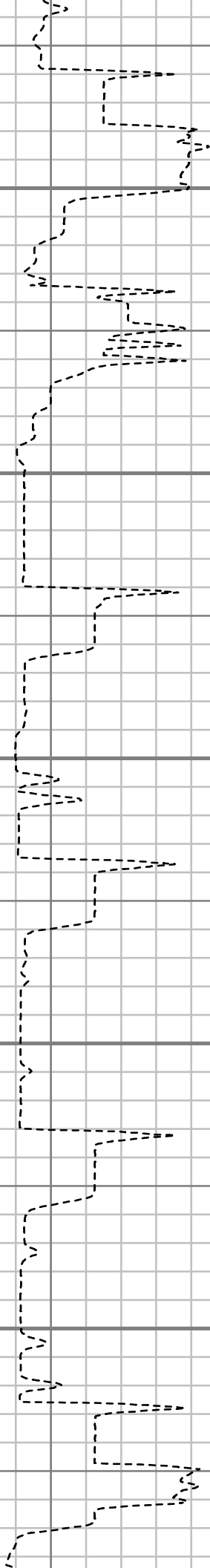
8500

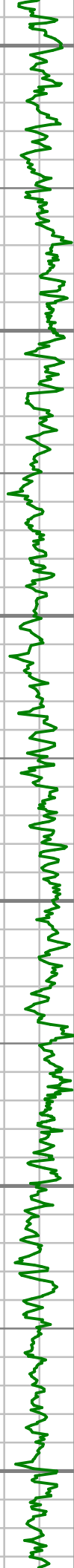
8600

8700

8800

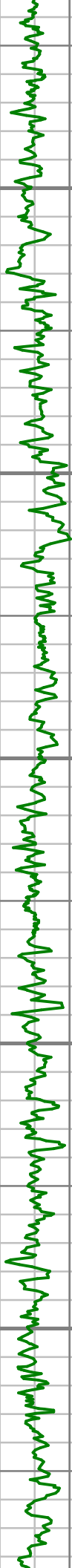
8900





9000
9100
9200
9300
9400
9500





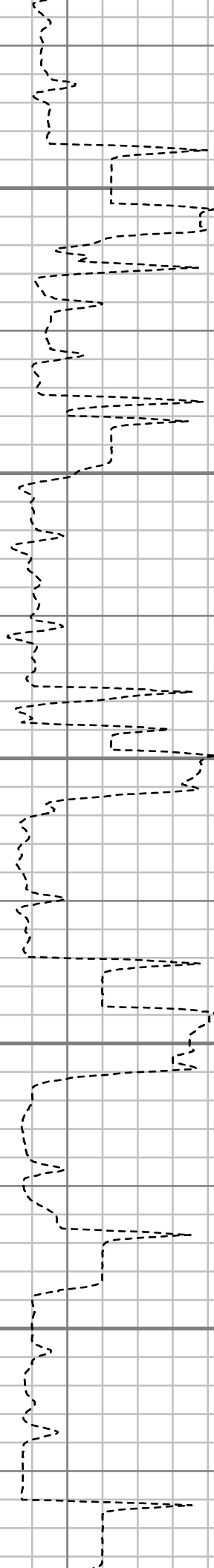
9600

9700

9800

9900

10000





10100

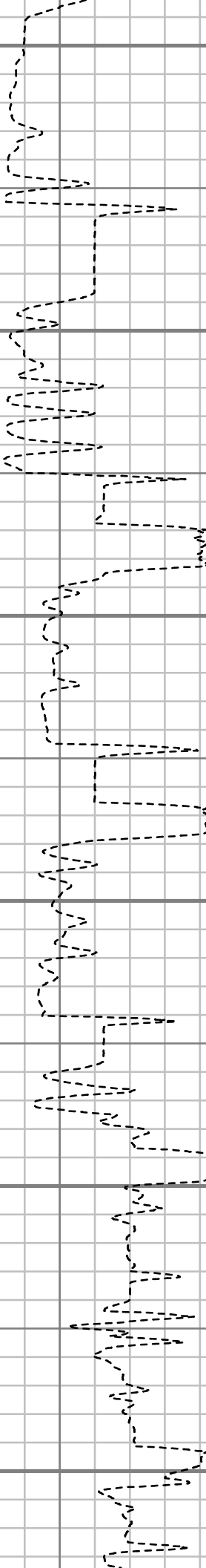
10200

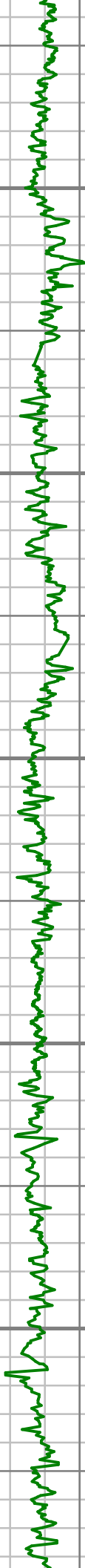
10300

10400

10500

10600





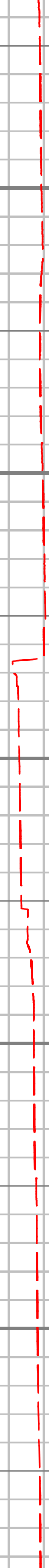
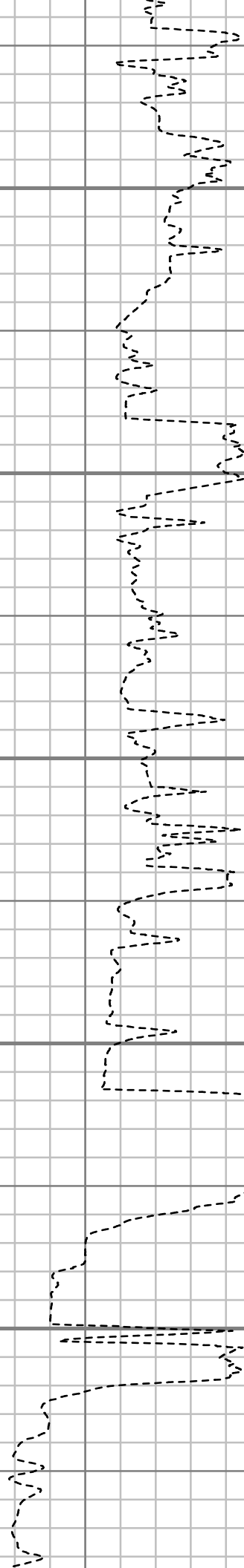
10700

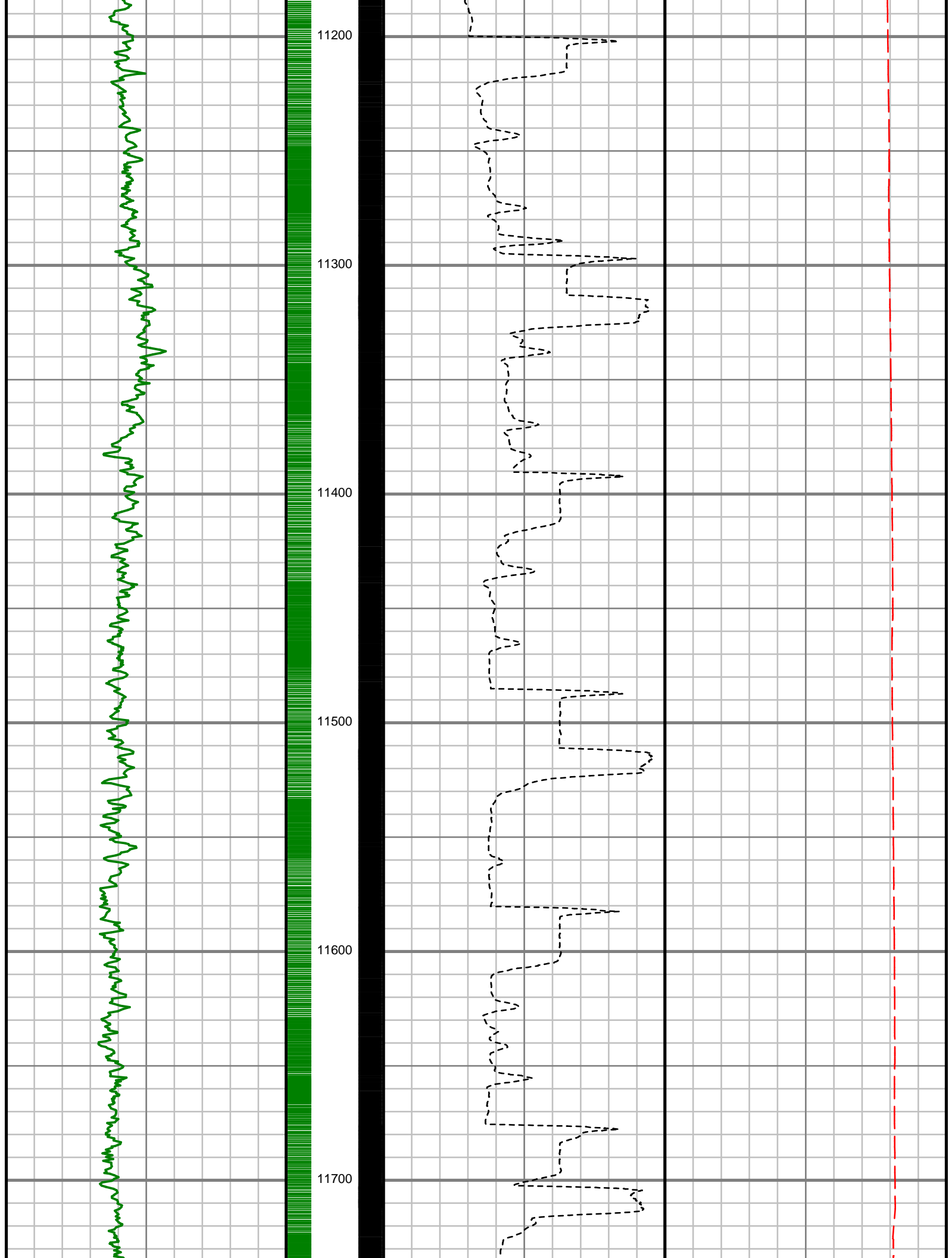
10800

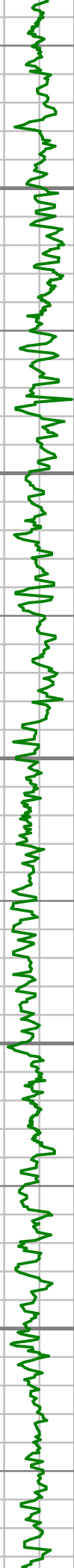
10900

11000

11100







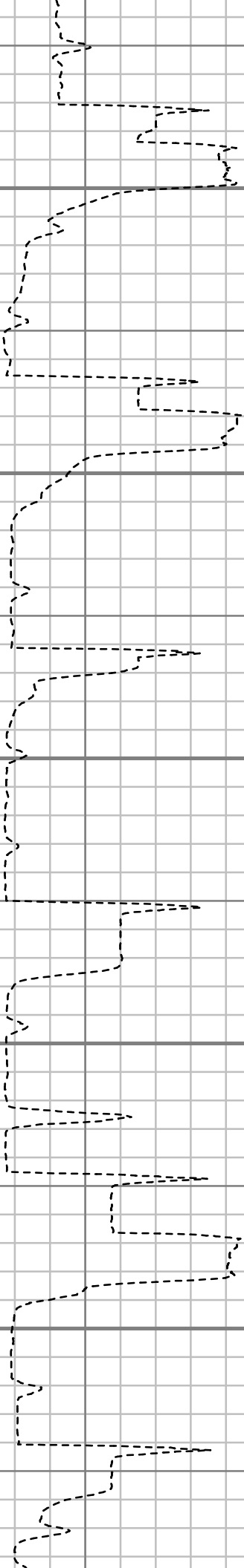
11800

11900

12000

12100

12200





12300

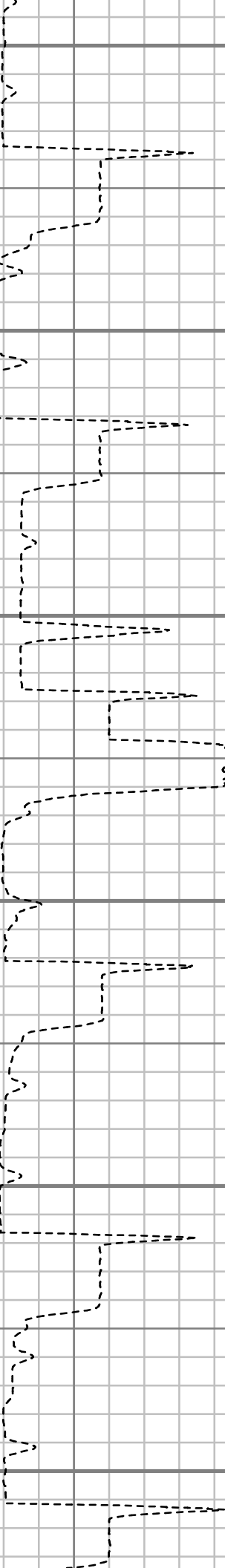
12400

12500

12600

12700

12800





13400

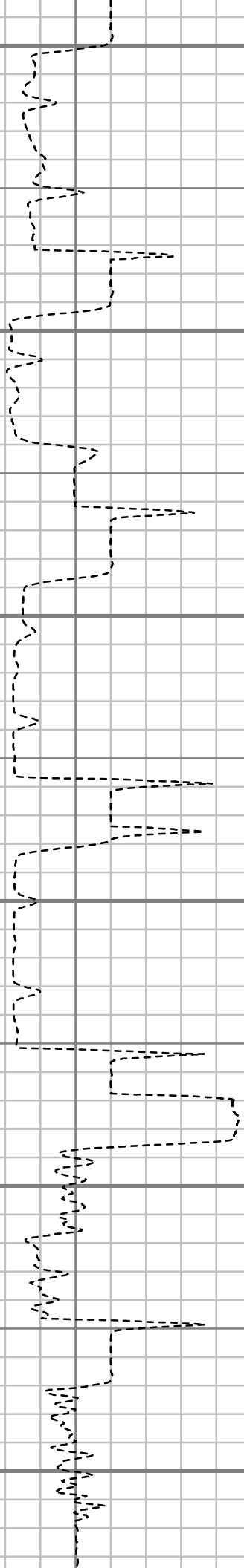
13500

13600

13700

13800

13900





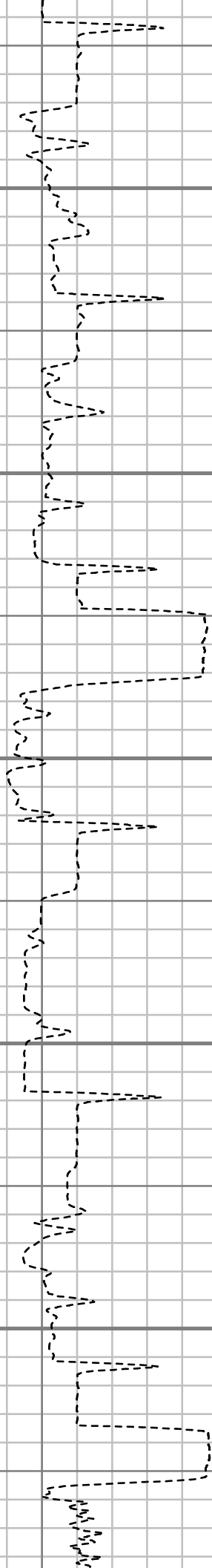
14000

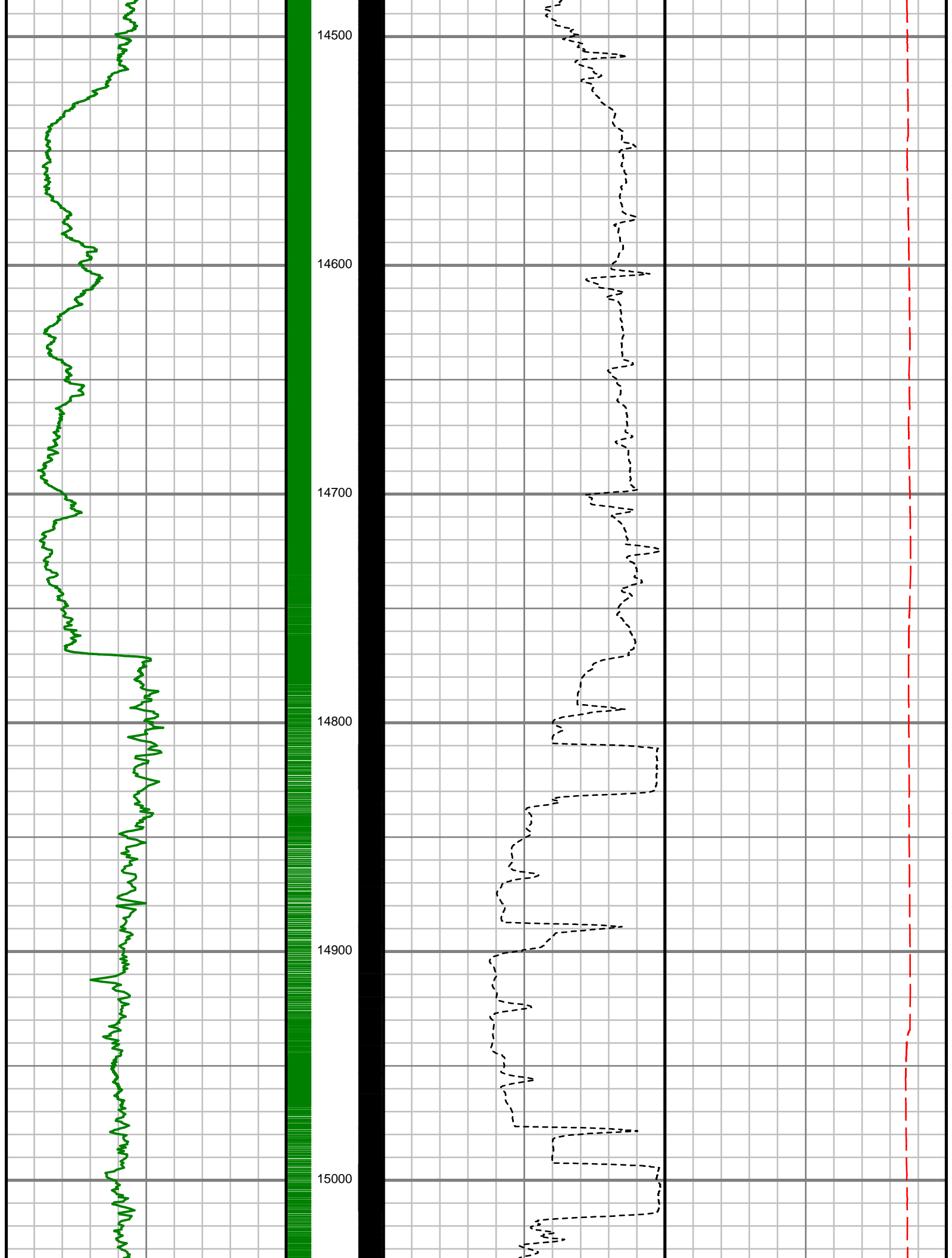
14100

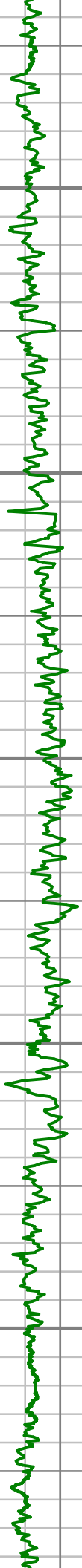
14200

14300

14400







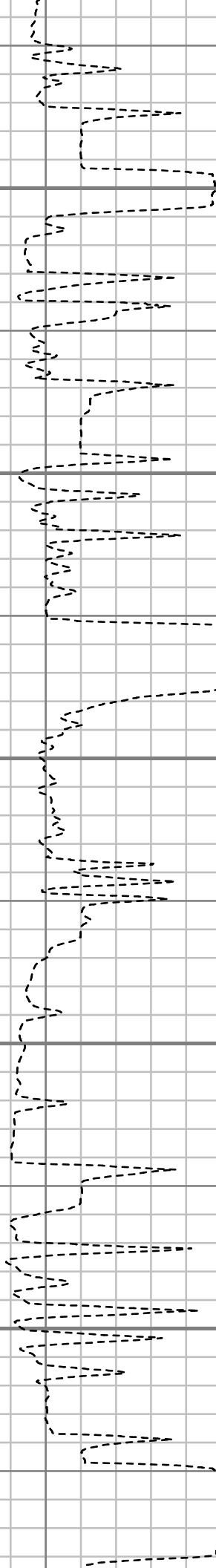
15100

15200

15300

15400

15500





15600

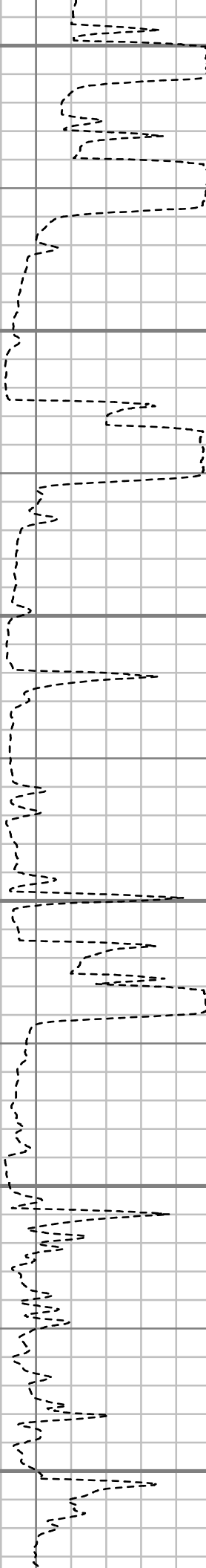
15700

15800

15900

16000

16100





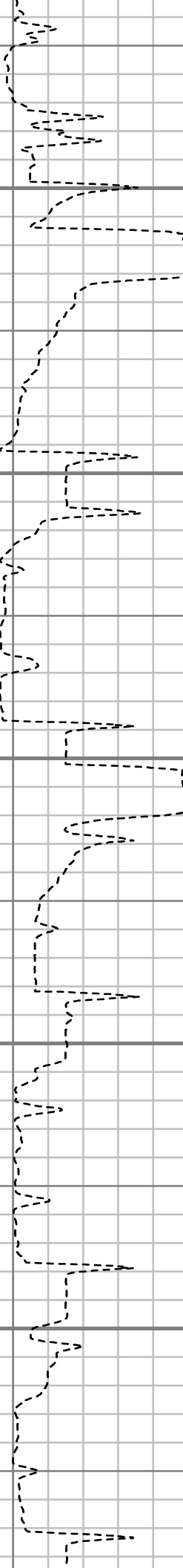
16200

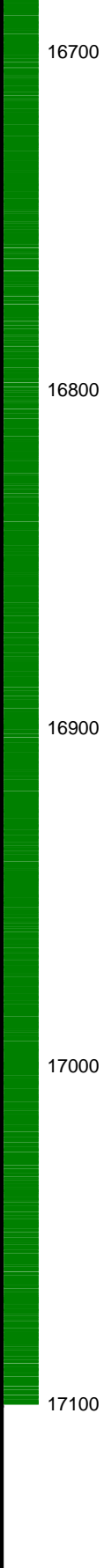
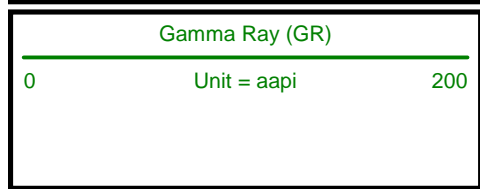
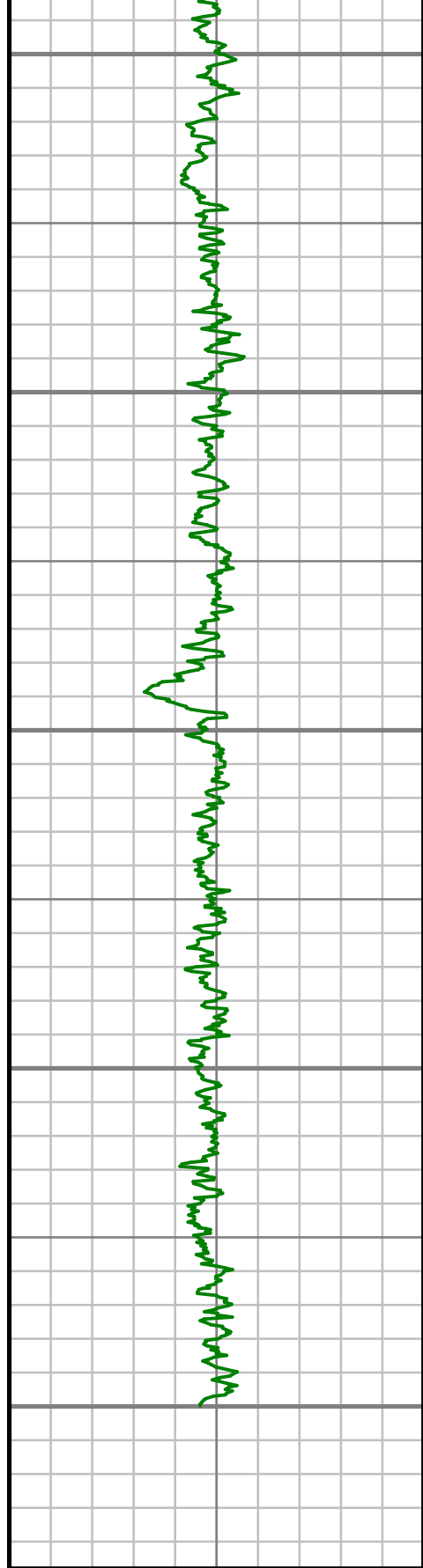
16300

16400

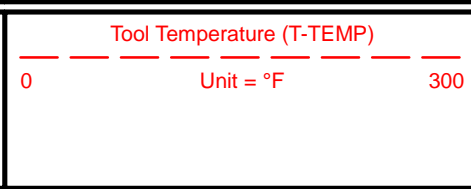
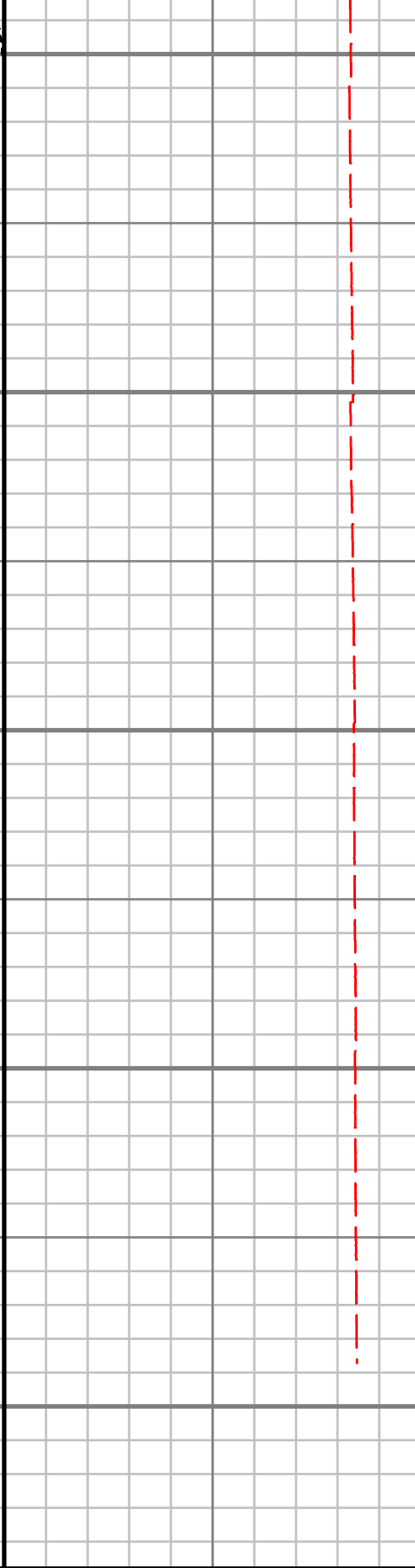
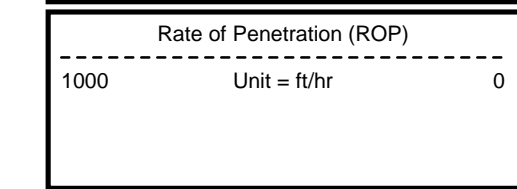
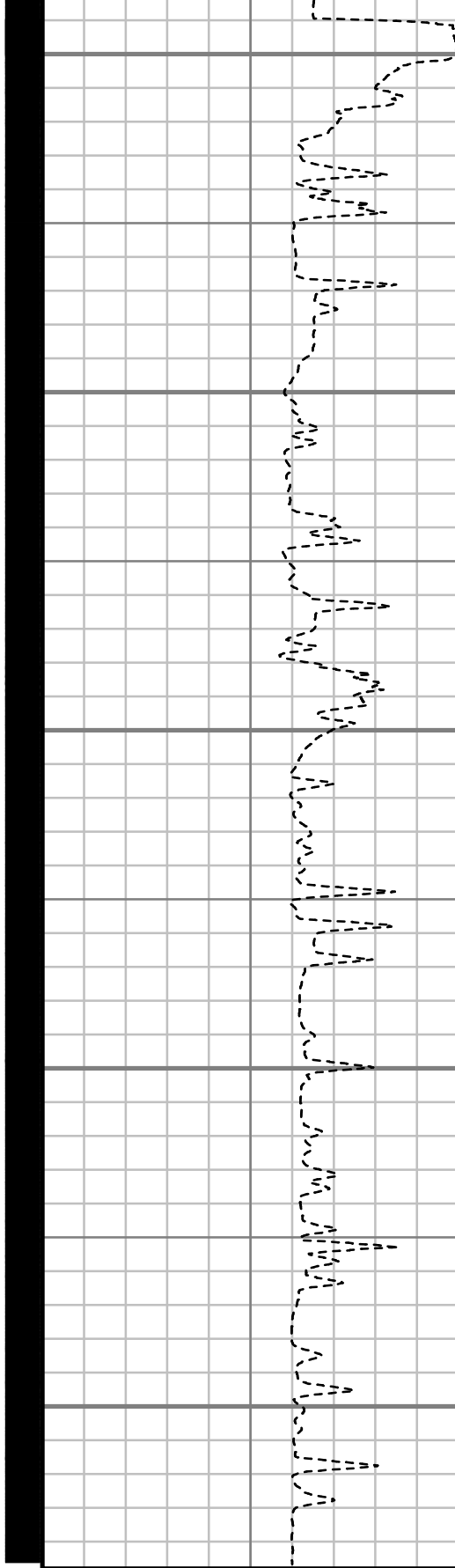
16500

16600





MEASURED DEPTH
1:600 (ft)

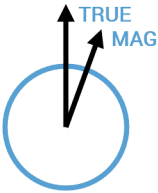


CUSTOMER EXTRACTION OIL AND GAS
PROJECT WINDER SOUTH 5
FIELD WATTENBURG

WELL INFORMATION
Lat/Long 40° 30' 9.626" N, 104° 53' 25.739" W
Northing 1,426,547.18 ft
Easting 3,169,498.36 ft
UWI 05-123-43407

MAP INFORMATION
North Reference True North
Grid Correction
System US State Plane 1983
Datum North American Datum 1983 (GRS 1980)
Map Zone Colorado North: 0501

VERTICAL SECTION REFERENCE
+N/-S 0 ft
+E/-W 0 ft
Proposal Direction 270.16°
Calculation Method Minimum Curvature



GEOMAGNETIC REFERENCE INFORMATION
Local Gravity: 999.086 mG [computed]

MD	MODEL	DATE	DECLINATION	MAG TO TRUE
0-17084 ft	BGGM2015	08 Sep 2016	8.51°	add 8.51°

WELL NOTES
OPERATORS
B. FRANTZ, J. DENNING, R. PERRY

MD	Inc	Azim	TVD	VS	+N/-S	+E/-W	DLS	Course Length
ft	deg	deg	ft	ft	ft	ft	°/100ft	ft
0.00	0.00	0.00	0.00	0.00	0.00	0.00	Invalid	Invalid
134.00	0.80	22.20	134.00	-0.35	0.87	0.35	0.60	134.00
224.00	0.90	17.80	223.99	-0.80	2.12	0.81	0.13	90.00
314.00	0.80	30.00	313.98	-1.33	3.34	1.34	0.23	90.00
404.00	0.80	357.10	403.97	-1.61	4.51	1.62	0.50	90.00
494.00	0.70	354.00	493.96	-1.51	5.68	1.53	0.12	90.00
584.00	0.70	19.20	583.95	-1.63	6.75	1.65	0.34	90.00
674.00	0.90	59.60	673.95	-2.42	7.63	2.44	0.65	90.00
764.00	4.70	122.50	763.83	-6.15	6.00	6.17	4.85	90.00
854.00	6.10	172.70	853.48	-9.89	-0.73	9.88	5.28	90.00
944.00	5.10	167.30	943.05	-11.40	-9.37	11.37	1.25	90.00
1034.00	6.20	163.30	1032.61	-13.70	-17.93	13.65	1.30	90.00
1124.00	7.70	162.40	1121.94	-16.95	-28.33	16.87	1.67	90.00
1214.00	7.60	165.80	1211.14	-20.26	-39.85	20.15	0.51	90.00
1304.00	7.30	166.80	1300.38	-23.06	-51.19	22.92	0.36	90.00
1394.00	7.40	162.80	1389.65	-26.11	-62.29	25.94	0.58	90.00
1484.00	7.20	161.30	1478.92	-29.66	-73.17	29.46	0.31	90.00
1531.00	7.10	163.60	1525.55	-31.44	-78.74	31.22	0.65	47.00

MD	Inc	Azim	TVD	VS	+N/-S	+E/-W	DLS	Course Length
ft	deg	deg	ft	ft	ft	ft	°/100ft	ft
1652.00	6.09	159.50	1645.75	-35.84	-91.93	35.58	0.92	121.00
1746.00	8.18	175.47	1739.03	-38.14	-103.27	37.86	3.05	94.00
1841.00	10.13	170.89	1832.81	-40.04	-118.26	39.71	2.19	95.00
2124.00	14.29	151.47	2109.46	-60.83	-173.56	60.35	2.05	283.00
2218.00	13.78	151.46	2200.66	-71.78	-193.58	71.24	0.54	94.00
2313.00	13.35	152.80	2293.01	-82.25	-213.27	81.66	0.56	95.00
2408.00	12.93	153.12	2385.52	-92.12	-232.51	91.47	0.45	95.00
2502.00	12.52	152.27	2477.21	-101.67	-250.91	100.97	0.47	94.00
2597.00	13.43	157.97	2569.79	-110.66	-270.25	109.90	1.65	95.00
2692.00	12.76	158.92	2662.32	-118.62	-290.27	117.81	0.74	95.00
2786.00	13.22	156.81	2753.91	-126.65	-309.84	125.78	0.70	94.00
2880.00	14.31	156.94	2845.21	-135.49	-330.41	134.57	1.15	94.00
2975.00	13.93	156.61	2937.34	-144.68	-351.71	143.70	0.41	95.00
3069.00	13.07	152.60	3028.75	-154.12	-371.53	153.09	1.35	94.00
3163.00	12.17	151.02	3120.47	-163.87	-389.64	162.78	1.03	94.00
3258.00	12.79	152.21	3213.23	-173.67	-407.70	172.53	0.70	95.00
3352.00	13.04	153.83	3304.85	-183.25	-426.41	182.06	0.47	94.00
3447.00	14.83	152.98	3397.05	-193.55	-446.86	192.31	1.90	95.00

MD	Inc	Azim	TVD	VS	+N/-S	+E/-W	DLS	Course Length
ft	deg	deg	ft	ft	ft	ft	°/100ft	ft
3542.00	13.82	152.55	3489.10	-204.36	-467.75	203.06	1.07	95.00
3636.00	12.84	158.10	3580.57	-213.49	-487.41	212.13	1.71	94.00
3731.00	13.95	162.80	3672.99	-220.87	-508.14	219.45	1.63	95.00
3826.00	14.18	162.59	3765.14	-227.80	-530.18	226.32	0.25	95.00
3921.00	14.40	162.30	3857.20	-234.93	-552.54	233.39	0.24	95.00
4016.00	14.06	162.83	3949.29	-241.99	-574.82	240.39	0.38	95.00
4110.00	12.25	162.60	4040.81	-248.41	-595.25	246.75	1.93	94.00
4205.00	11.66	164.98	4133.75	-253.96	-614.15	252.25	0.81	95.00
4299.00	11.96	168.28	4225.76	-258.45	-632.86	256.69	0.79	94.00
4394.00	12.61	166.04	4318.59	-263.01	-652.56	261.19	0.85	95.00
4488.00	14.18	170.66	4410.03	-267.41	-673.88	265.53	2.03	94.00
4582.00	13.24	171.09	4501.35	-271.01	-695.88	269.07	1.01	94.00
4677.00	11.67	168.54	4594.11	-274.66	-716.05	272.67	1.75	95.00
4771.00	11.94	163.27	4686.13	-279.40	-734.68	277.35	1.18	94.00
4866.00	11.59	164.27	4779.13	-284.87	-753.27	282.77	0.43	95.00
4961.00	13.52	164.41	4871.86	-290.50	-773.15	288.34	2.04	95.00
5056.00	14.88	165.86	4963.95	-296.53	-795.68	294.30	1.48	95.00
5150.00	13.58	167.77	5055.06	-301.88	-818.17	299.59	1.47	94.00

MD	Inc	Azim	TVD	VS	+N/-S	+E/-W	DLS	Course Length
ft	deg	deg	ft	ft	ft	ft	°/100ft	ft
5245.00	11.32	165.16	5147.82	-306.68	-838.09	304.35	2.45	95.00
5340.00	12.98	168.29	5240.69	-311.29	-857.56	308.90	1.87	95.00
5435.00	13.33	168.91	5333.20	-315.63	-878.75	313.17	0.40	95.00
5529.00	11.95	168.49	5424.92	-319.71	-898.92	317.20	1.48	94.00
5624.00	12.08	154.44	5517.86	-326.01	-917.53	323.45	3.07	95.00
5719.00	12.61	156.31	5610.66	-334.52	-935.99	331.91	0.70	95.00
5814.00	13.86	161.17	5703.14	-342.42	-956.26	339.75	1.77	95.00
5908.00	15.07	159.37	5794.16	-350.42	-978.36	347.69	1.37	94.00
6003.00	12.70	156.29	5886.38	-359.03	-999.48	356.24	2.61	95.00
6098.00	11.76	157.91	5979.22	-366.92	-1018.02	364.08	1.05	95.00
6192.00	10.33	167.18	6071.48	-372.45	-1035.12	369.56	2.42	94.00
6287.00	10.74	168.65	6164.88	-376.13	-1052.11	373.19	0.51	95.00
6381.00	10.98	169.70	6257.20	-379.50	-1069.50	376.51	0.33	94.00
6500.00	12.60	165.18	6373.69	-384.91	-1093.19	381.86	1.57	119.00
6594.00	12.04	160.42	6465.52	-390.87	-1112.34	387.77	1.23	94.00
6689.00	16.67	155.58	6557.54	-399.89	-1134.10	396.73	5.03	95.00
6783.00	16.98	161.65	6647.52	-409.86	-1159.40	406.62	1.90	94.00
6878.00	24.35	194.00	6736.63	-409.57	-1191.72	406.25	14.04	95.00

MD	Inc	Azim	TVD	VS	+N/-S	+E/-W	DLS	Course Length
ft	deg	deg	ft	ft	ft	ft	°/100ft	ft
6973.00	25.81	219.60	6822.92	-391.70	-1226.76	388.27	11.44	95.00
7067.00	23.48	241.26	6908.52	-362.24	-1251.59	358.74	9.87	94.00
7162.00	24.35	246.35	6995.38	-327.75	-1268.55	324.20	2.35	95.00
7256.00	33.86	253.00	7077.44	-284.89	-1284.02	281.31	10.67	94.00
7351.00	43.49	259.09	7151.55	-227.36	-1297.98	223.74	10.89	95.00
7445.00	54.15	262.38	7213.36	-157.66	-1309.19	154.01	11.63	94.00
7540.00	68.42	262.94	7258.88	-75.27	-1319.78	71.58	15.04	95.00
7634.00	75.29	265.43	7288.15	13.51	-1328.78	-17.22	7.72	94.00
7729.00	84.22	268.31	7305.03	106.74	-1333.84	-110.47	9.87	95.00
7823.00	88.66	268.25	7310.87	200.49	-1336.66	-204.22	4.72	94.00
7918.00	91.14	269.32	7311.03	295.45	-1338.68	-299.19	2.85	95.00
8013.00	92.58	269.10	7307.95	390.38	-1339.99	-394.13	1.54	95.00
8107.00	90.54	269.72	7305.39	484.34	-1340.95	-488.08	2.28	94.00
8202.00	90.37	269.51	7304.64	579.33	-1341.59	-583.08	0.29	95.00
8297.00	89.26	268.65	7304.94	674.31	-1343.12	-678.06	1.47	95.00
8391.00	89.66	268.93	7305.82	768.28	-1345.11	-772.04	0.52	94.00
8485.00	89.69	271.22	7306.35	862.27	-1344.98	-866.03	2.43	94.00
8580.00	89.90	271.48	7306.69	957.25	-1342.75	-961.00	0.35	95.00

MD	Inc	Azim	TVD	VS	+N/-S	+E/-W	DLS	Course Length
ft	deg	deg	ft	ft	ft	ft	°/100ft	ft
8674.00	89.66	270.64	7307.05	1051.24	-1341.01	-1054.98	0.93	94.00
8769.00	89.77	270.73	7307.52	1146.23	-1339.87	-1149.98	0.14	95.00
8863.00	90.75	271.74	7307.10	1240.21	-1337.84	-1243.95	1.50	94.00
8958.00	89.23	271.48	7307.12	1335.18	-1335.17	-1338.91	1.62	95.00
9052.00	88.25	270.54	7309.18	1429.14	-1333.52	-1432.87	1.44	94.00
9147.00	89.93	271.71	7310.68	1524.11	-1331.66	-1527.84	2.16	95.00
9241.00	91.07	272.02	7309.86	1618.06	-1328.60	-1621.78	1.26	94.00
9336.00	91.11	271.15	7308.05	1713.02	-1325.98	-1716.73	0.92	95.00
9430.00	89.90	270.43	7307.22	1807.01	-1324.69	-1810.71	1.49	94.00
9525.00	90.84	270.16	7306.62	1902.00	-1324.19	-1905.71	1.03	95.00
9619.00	90.17	269.65	7305.79	1996.00	-1324.35	-1999.70	0.90	94.00
9714.00	90.94	269.31	7304.87	2090.98	-1325.21	-2094.69	0.89	95.00
9808.00	89.25	267.96	7304.72	2184.95	-1327.45	-2188.66	2.30	94.00
9903.00	89.36	270.17	7305.87	2279.92	-1328.99	-2283.64	2.33	95.00
9997.00	90.20	270.31	7306.22	2373.91	-1328.60	-2377.63	0.90	94.00
10092.00	90.71	269.87	7305.47	2468.91	-1328.45	-2472.63	0.70	95.00
10186.00	91.44	269.36	7303.71	2562.89	-1329.08	-2566.61	0.96	94.00
10281.00	90.94	270.03	7301.74	2657.86	-1329.59	-2661.59	0.89	95.00

MD	Inc	Azim	TVD	VS	+N/-S	+E/-W	DLS	Course Length
ft	deg	deg	ft	ft	ft	ft	°/100ft	ft
10375.00	89.70	270.08	7301.21	2751.86	-1329.50	-2755.58	1.32	94.00
10470.00	90.67	269.76	7300.91	2846.86	-1329.64	-2850.58	1.08	95.00
10564.00	92.08	271.07	7298.65	2940.83	-1328.96	-2944.55	2.05	94.00
10659.00	88.22	271.26	7298.40	3035.79	-1327.03	-3039.51	4.07	95.00
10753.00	87.85	271.41	7301.62	3129.72	-1324.84	-3133.43	0.43	94.00
10848.00	90.94	270.01	7302.62	3224.69	-1323.65	-3228.40	3.57	95.00
10952.00	90.54	269.63	7301.28	3328.68	-1323.98	-3332.39	0.53	104.00
11046.00	89.43	271.95	7301.31	3422.67	-1322.67	-3426.38	2.74	94.00
11141.00	89.19	274.94	7302.45	3517.50	-1316.96	-3521.19	3.15	95.00
11235.00	90.13	274.99	7303.00	3611.16	-1308.83	-3614.83	1.00	94.00
11329.00	91.58	273.58	7301.60	3704.90	-1301.81	-3708.55	2.14	94.00
11424.00	92.18	272.86	7298.48	3799.72	-1296.48	-3803.35	0.99	95.00
11519.00	91.14	271.39	7295.72	3894.62	-1292.96	-3898.24	1.89	95.00
11613.00	91.41	271.34	7293.63	3988.57	-1290.72	-3992.19	0.29	94.00
11707.00	92.12	271.03	7290.73	4082.51	-1288.77	-4086.13	0.82	94.00
11802.00	91.54	268.76	7287.70	4177.46	-1288.95	-4181.07	2.46	95.00
11896.00	89.23	268.49	7287.06	4271.41	-1291.21	-4275.04	2.48	94.00
11991.00	89.83	268.57	7287.84	4366.37	-1293.64	-4370.00	0.64	95.00

MD	Inc	Azim	TVD	VS	+N/-S	+E/-W	DLS	Course Length
ft	deg	deg	ft	ft	ft	ft	°/100ft	ft
12085.00	90.47	267.92	7287.60	4460.32	-1296.53	-4463.96	0.97	94.00
12180.00	91.04	270.40	7286.34	4555.29	-1297.92	-4558.93	2.68	95.00
12274.00	91.88	270.71	7283.95	4649.25	-1297.01	-4652.89	0.96	94.00
12368.00	92.62	269.86	7280.26	4743.18	-1296.54	-4746.82	1.20	94.00
12463.00	93.70	269.58	7275.02	4838.03	-1297.00	-4841.67	1.17	95.00
12557.00	91.68	269.94	7270.62	4931.92	-1297.39	-4935.56	2.18	94.00
12652.00	91.95	269.64	7267.61	5026.87	-1297.73	-5030.51	0.42	95.00
12746.00	93.02	269.80	7263.54	5120.78	-1298.19	-5124.42	1.15	94.00
12841.00	94.16	269.84	7257.59	5215.59	-1298.49	-5219.23	1.20	95.00
12935.00	92.12	270.33	7252.45	5309.44	-1298.35	-5313.09	2.23	94.00
13030.00	92.18	269.55	7248.88	5404.37	-1298.45	-5408.02	0.82	95.00
13124.00	92.38	268.62	7245.14	5498.28	-1299.95	-5501.93	1.01	94.00
13219.00	93.36	268.90	7240.38	5593.13	-1302.00	-5596.79	1.07	95.00
13313.00	92.18	270.27	7235.83	5687.01	-1302.68	-5690.67	1.92	94.00
13407.00	91.61	269.87	7232.72	5780.96	-1302.55	-5784.62	0.74	94.00
13502.00	92.25	269.55	7229.52	5875.90	-1303.03	-5879.57	0.76	95.00
13596.00	93.43	269.82	7224.86	5969.78	-1303.55	-5973.45	1.29	94.00
13690.00	94.17	269.52	7218.63	6063.57	-1304.09	-6067.24	0.85	94.00

MD	Inc	Azim	TVD	VS	+N/-S	+E/-W	DLS	Course Length
ft	deg	deg	ft	ft	ft	ft	°/100ft	ft
13784.00	92.85	270.97	7212.88	6157.39	-1303.69	-6161.06	2.07	94.00
13879.00	92.65	270.53	7208.31	6252.28	-1302.45	-6255.94	0.50	95.00
13973.00	92.15	269.34	7204.37	6346.19	-1302.55	-6349.85	1.37	94.00
14068.00	91.68	268.32	7201.20	6441.11	-1304.50	-6444.78	1.19	95.00
14162.00	91.81	269.68	7198.34	6535.05	-1306.14	-6538.72	1.46	94.00
14256.00	91.78	270.45	7195.39	6629.00	-1306.03	-6632.67	0.82	94.00
14351.00	90.30	269.49	7193.67	6723.98	-1306.09	-6727.65	1.86	95.00
14445.00	91.21	270.43	7192.43	6817.97	-1306.16	-6821.64	1.39	94.00
14540.00	91.18	269.73	7190.45	6912.95	-1306.03	-6916.62	0.73	95.00
14634.00	92.18	269.40	7187.69	7006.90	-1306.74	-7010.58	1.13	94.00
14729.00	93.52	268.96	7182.97	7101.77	-1308.10	-7105.45	1.48	95.00
14823.00	92.48	270.20	7178.05	7195.63	-1308.78	-7199.31	1.72	94.00
14918.00	93.22	270.62	7173.32	7290.51	-1308.10	-7294.19	0.89	95.00
15012.00	92.18	270.72	7168.89	7384.40	-1307.00	-7388.08	1.11	94.00
15107.00	92.08	270.91	7165.36	7479.33	-1305.65	-7483.00	0.22	95.00
15193.00	91.48	270.29	7162.69	7565.28	-1304.74	-7568.96	1.00	86.00
15287.00	91.48	269.53	7160.26	7659.25	-1304.89	-7662.92	0.81	94.00
15382.00	90.70	268.53	7158.46	7754.21	-1306.50	-7757.89	1.33	95.00

MD	Inc	Azim	TVD	VS	+N/-S	+E/-W	DLS	Course Length
ft	deg	deg	ft	ft	ft	ft	°/100ft	ft
15476.00	90.70	268.44	7157.30	7848.17	-1308.98	-7851.85	0.10	94.00
15571.00	88.99	268.31	7157.55	7943.12	-1311.68	-7946.81	1.80	95.00
15665.00	87.99	271.50	7160.03	8037.07	-1311.84	-8040.76	3.55	94.00
15760.00	89.36	273.13	7162.23	8131.97	-1308.01	-8135.66	2.25	95.00
15854.00	90.34	273.39	7162.47	8225.83	-1302.66	-8229.50	1.07	94.00
15949.00	91.38	273.48	7161.05	8320.66	-1296.97	-8324.32	1.10	95.00
16043.00	91.95	273.60	7158.33	8414.46	-1291.17	-8418.10	0.62	94.00
16138.00	92.48	274.07	7154.66	8509.20	-1284.82	-8512.82	0.75	95.00
16232.00	91.68	272.42	7151.25	8602.99	-1279.51	-8606.60	1.96	94.00
16327.00	92.58	272.30	7147.71	8697.86	-1275.60	-8701.45	0.96	95.00
16422.00	91.61	270.75	7144.24	8792.76	-1273.07	-8796.35	1.93	95.00
16516.00	92.01	270.79	7141.26	8886.71	-1271.80	-8890.30	0.43	94.00
16611.00	92.48	270.26	7137.54	8981.63	-1270.92	-8985.22	0.75	95.00
16706.00	91.21	269.58	7134.48	9076.58	-1271.06	-9080.17	1.52	95.00
16800.00	91.48	268.88	7132.27	9170.54	-1272.32	-9174.13	0.80	94.00
16895.00	91.48	268.96	7129.83	9265.49	-1274.11	-9269.08	0.08	95.00
16989.00	90.87	267.90	7127.90	9359.42	-1276.69	-9363.03	1.30	94.00
17084.00	90.20	266.97	7127.01	9454.31	-1280.94	-9457.92	1.21	95.00

MD ft	Inc deg	Azim deg	TVD ft	VS ft	+N/-S ft	+E/-W ft	DLS °/100ft	Course Length ft

2" = 100' FEET MD