

LEGEND

- ◆ FOUND GLO BRASS CAP ON STEEL POST
- WELL HEAD
- (M) MEASURED IN FIELD
- L 90° SYMBOL
- GLO GENERAL LAND OFFICE

BASIS OF BEARING:

THE LINE FROM THE SE CORNER TO THE E 1/4 CORNER OF SECTION 1, TOWNSHIP 12 SOUTH, RANGE 90 WEST, 6TH P.M., WAS ASSUMED TO BEAR N 00°02'43\" W AS MONUMENTED AND SHOWN HEREON.

CERTIFICATE OF SURVEY:

I, DAVID G. NICEWICZ, A REGISTERED PROFESSIONAL LAND SURVEYOR IN THE STATE OF COLORADO, DO HEREBY CERTIFY THAT THE SURVEY REPRESENTED BY THIS PLAT WAS MADE UNDER MY DIRECTION AND SUPERVISION, AND THAT THIS PLAT ACCURATELY REPRESENTS THIS SURVEY.

DAVID G. NICEWICZ, P.L.S. NO. 24968

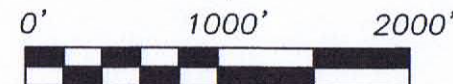
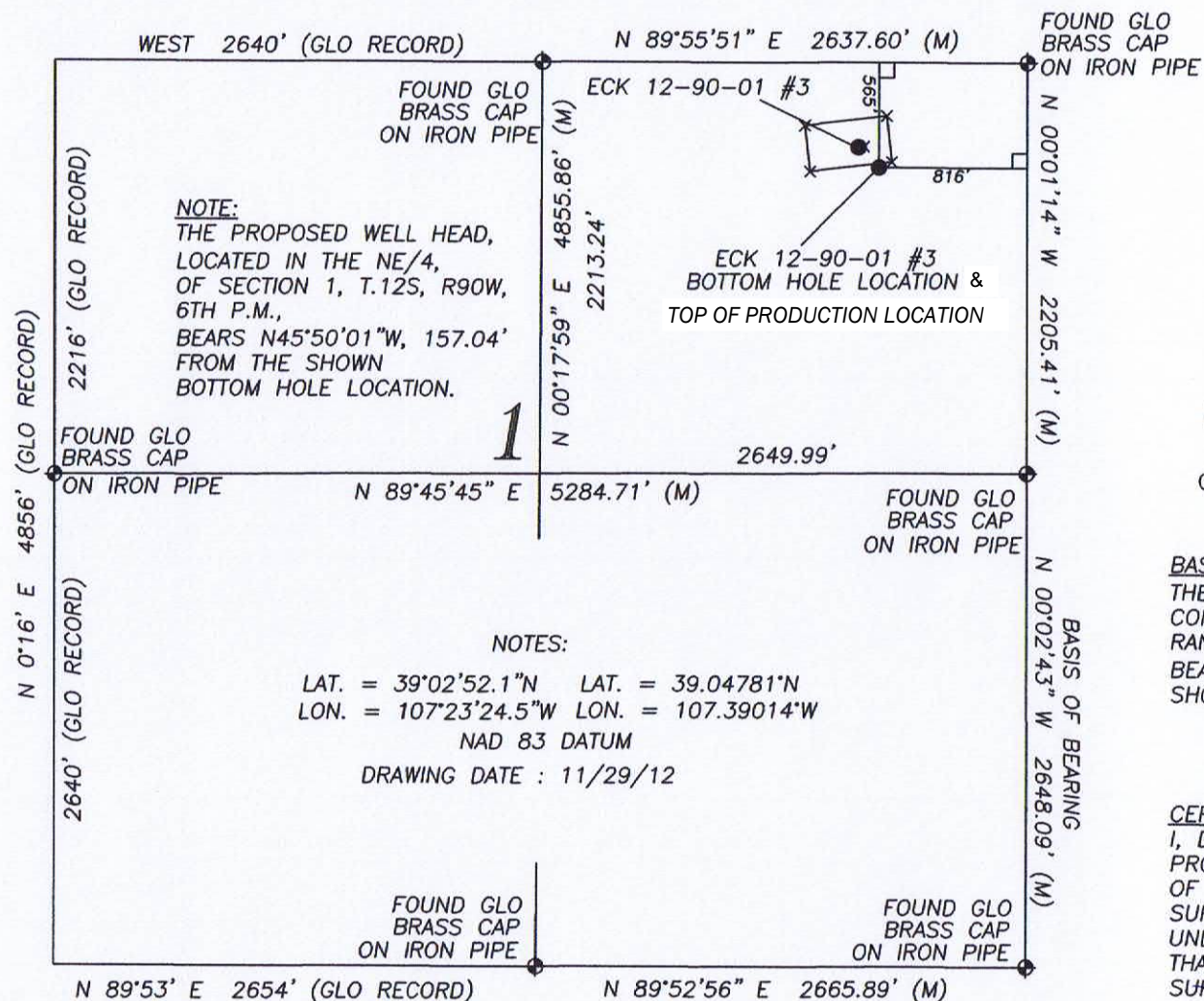
GAS WELL LOCATION

ECK 12-90-01 #3

LOCATED IN S. 1, T. 12 S., R. 90 W., 6th P.M.
GUNNISON COUNTY, COLORADO

SURVEYED BY	DATE	E. SCHAAF AND ASSOC., INC.	
DGN	09/20/12	340 PALMER ST., DELTA, CO. 81416	
DRAWN BY	SCALE	ACCT. NO.	
MLD	1\"=1000	WE12155SG	SG INT

E. SCHAAF AND ASSOC., INC. OF DELTA, COLORADO, has in accordance with a request from ERIC SANFORD, for SG INTERESTS I, LTD, determined the location of ECK 12-90-01 #3 to be 455' FNL & 929' FEL Section 1, Township 12 South, Range 90 West, of the Sixth Principal Meridian, Gunnison County, Colorado.



GRAPHIC SCALE

1" = 1000 U.S. SURVEY FEET

LEGEND

- ◆ FOUND GLO BRASS CAP ON STEEL POST
- WELL HEAD
- (M) MEASURED IN FIELD
- L 90° SYMBOL
- GLO GENERAL LAND OFFICE

BASIS OF BEARING:

THE LINE FROM THE SE CORNER TO THE E 1/4 CORNER OF SECTION 1, TOWNSHIP 12 SOUTH, RANGE 90 WEST, 6TH P.M., WAS ASSUMED TO BEAR N 00°02'43" W AS MONUMENTED AND SHOWN HEREON.

CERTIFICATE OF SURVEY:

I, DAVID G. NICEWICZ, A REGISTERED PROFESSIONAL LAND SURVEYOR IN THE STATE OF COLORADO, DO HEREBY CERTIFY THAT THE SURVEY REPRESENTED BY THIS PLAT WAS MADE UNDER MY DIRECTION AND SUPERVISION, AND THAT THIS PLAT ACCURATELY REPRESENTS THIS SURVEY.

DAVID G. NICEWICZ, P.L.S. NO. 24965

GAS WELL LOCATION

ECK 12-90-01 #3
BOTTOM HOLE LOCATION
LOCATED IN S. 1, T. 12 S., R. 90 W., 6th P.M.
GUNNISON COUNTY, COLORADO

SURVEYED BY	DATE	E. SCHAAF AND ASSOC., INC.	
DGN	11/29/12	340 PALMER ST., DELTA, CO. 81416	
PAGE	SCALE	ACCT. NO.	
1 OF 1	1"=1000'	WE12155SG	SG INT

E. SCHAAF AND ASSOC., INC. OF DELTA, COLORADO, has in accordance with a request from ERIC SANFORD, for SG INTERESTS I, LTD, determined the location of ECK 12-90-01 #3 BOTTOM HOLE LOCATION to be 565' FNL & 816' FEL Section 1, Township 12 South, Range 90 West, of the Sixth Principal Meridian, Gunnison County, Colorado.