

HALLIBURTON

iCem[®] Service

EXTRACTION OIL & GAS

Date: Thursday, October 06, 2016

Winder South #2

Surface

Job Date: Friday, August 12, 2016

Sincerely,

Lauren Roberts

Legal Notice

Warning Disclaimer

Although the information contained in this report is based on sound engineering practices, the copyright owner(s) does (do) not accept any responsibility whatsoever, in negligence or otherwise, for any loss or damage arising from the possession or use of the report whether in terms of correctness or otherwise. The application, therefore, by the user of this report or any part thereof, is solely at the user's own risk.

Limitations of Liability

Except as expressly set forth herein, there are no representations or warranties by Halliburton, express or implied, including implied warranties of merchantability and/or fitness for a particular purpose. In no event will Halliburton or its suppliers be liable for consequential, incidental, special, punitive or exemplary damages (including, without limitation, loss of data, profits, use of hardware, or software). Customer accepts full responsibility for any investment made based on results from the Software. Any interpretations, analyses or modeling of any data, including, but not limited to Customer data, and any recommendation or decisions based upon such interpretations, analyses or modeling are opinions based upon inferences from measurements and empirical relationships and assumptions, which inferences and assumptions are not infallible, and with respect to which professional may differ. Accordingly, Halliburton cannot and does not warrant the accuracy, correctness or completeness of any such interpretation, recommendation, modeling or other products of the Software Product. As such, any interpretation, recommendation or modeling resulting from the Software for the purpose of any drilling, well treatment, production or financial decision will be at the sole risk of Customer. Under no circumstances will Halliburton or its suppliers be liable for any damages.

Table of Contents

1.0 Cementing Job Summary 4

 1.1 Executive Summary4

2.0 Real-Time Job Summary 7

 2.1 Job Event Log7

3.0 Attachments..... 9

 3.1 Extraction Oil & Gas Winder South 2 Surface-Custom Results.png.....9

 3.2 Extraction Oil & Gas Winder South 2 Surface-Cement .png.....10

1.0 Cementing Job Summary

1.1 Executive Summary

Halliburton appreciates the opportunity to perform the cementing services on the **Winder South #2** cement **Surface** casing job. A pre-job safety meeting was held before the job where details of the job were discussed, potential safety hazards were reviewed, and environmental compliance procedures were outlined.

22 bbl. of cement returned to surface.

Halliburton maintains a continuous quality improvement process and appreciates any comments or suggestions that you may have. Halliburton again thanks you for the opportunity to perform service work on this well. We hope to be your solutions provider for future projects.

Respectfully,

Halliburton [Ft. Lupton]

The Road to Excellence Starts with Safety

Sold To #: 369404		Ship To #: 3749887		Quote #:		Sales Order #: 0903474175					
Customer: EXTRACTION OIL & GAS -				Customer Rep: Todd Stephens							
Well Name: WINDER SOUTH			Well #: 2		API/UWI #: 05-123-43404-00						
Field: WATTENBERG		City (SAP): WINDSOR		County/Parish: WELD		State: COLORADO					
Legal Description: SE NE-9-6N-67W-2306FNL-508FEL											
Contractor:				Rig/Platform Name/Num: Spud Rig							
Job BOM: 7521											
Well Type: HORIZONTAL OIL											
Sales Person: HALAMERICA\HX38199				Srv Supervisor: Steve McCoy							
Job											
Formation Name											
Formation Depth (MD)		Top		Bottom							
Form Type				BHST							
Job depth MD		1559ft		Job Depth TVD							
Water Depth				Wk Ht Above Floor							
Perforation Depth (MD)		From		To							
Well Data											
Description	New / Used	Size in	ID in	Weight lbm/ft	Thread	Grade	Top MD ft	Bottom MD ft	Top TVD ft	Bottom TVD ft	
Casing		9.625	8.921	36			0	1559	0	1559	
Open Hole Section			13.5				0	1559	0	1559	
Tools and Accessories											
Type	Size in	Qty	Make	Depth ft		Type	Size in	Qty	Make		
Guide Shoe	9.625			1559		Top Plug	9.625		HES		
Float Shoe	9.625					Bottom Plug	9.625		HES		
Float Collar	9.625					SSR plug set	9.625		HES		
Insert Float	9.625					Plug Container	9.625		HES		
Stage Tool	9.625					Centralizers	9.625		HES		
Fluid Data											
Stage/Plug #: 1											
Fluid #	Stage Type	Fluid Name			Qty	Qty UoM	Mixing Density lbm/gal	Yield ft3/sack	Mix Fluid Gal	Rate bbl/min	Total Mix Fluid Gal
1	Fresh Water	Fresh Water			10	bbl	8.33			.5	

Fluid #	Stage Type	Fluid Name	Qty	Qty UoM	Mixing Density lbm/gal	Yield ft3/sack	Mix Fluid Gal	Rate bbl/min	Total Mix Fluid Gal
2	SwiftCem	SWIFTCEM (TM) SYSTEM	565	sack	13.5	1.74		6	9.19
9.19 Gal		FRESH WATER							
Fluid #	Stage Type	Fluid Name	Qty	Qty UoM	Mixing Density lbm/gal	Yield ft3/sack	Mix Fluid Gal	Rate bbl/min	Total Mix Fluid Gal
3	Displacement	Displacement WBM	117.2	bbl	8.74			6	
Cement Left In Pipe		Amount	43 ft		Reason			Shoe Joint	
Mix Water:		pH 7	Mix Water Chloride:## 0		Mix Water Temperature:			75 °F	
Plug Bumped?		Yes	Bump Pressure:460 psi		Floats Held?			Yes	
Cement Returns:		22 bbl	Returns Density:13.5 lb/gal						
Comment									

2.0 Real-Time Job Summary

2.1 Job Event Log

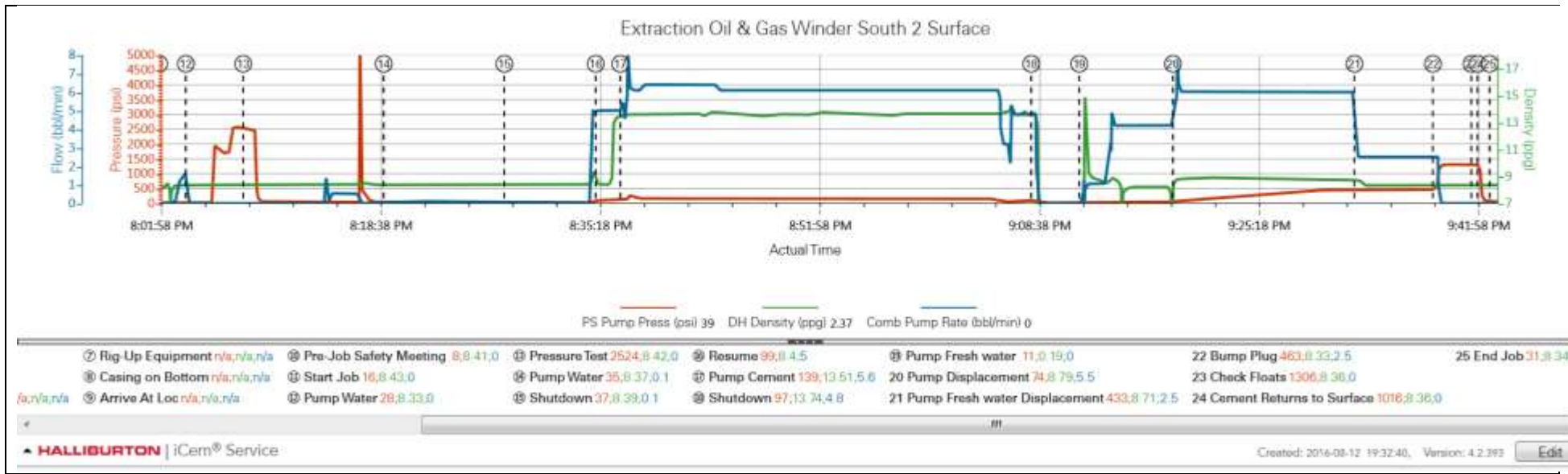
Type	Seq. No.	Activity	Graph Label	Date	Time	Source	Pass-Side Pump Pressure (psi)	Downhole Density (ppg)	Combined Pump Rate (bbl/min)	Comments
Event	1	Call Out	Call Out	8/12/2016	14:00:00	USER				Requested on Location @ 1900
Event	2	Pre-Convoy Safety Meeting	Pre-Convoy Safety Meeting	8/12/2016	16:45:00	USER				Pump and Cementer left for location while the bulk drivers waited for the cement to be loaded
Event	3	Depart Shop for Location	Depart Shop for Location	8/12/2016	17:00:00	USER				
Event	4	Arrive At Loc	Arrive At Loc	8/12/2016	18:00:00	USER				Pump and cementer arrived on location
Event	5	Depart Shop for Location	Depart Shop for Location	8/12/2016	18:05:00	USER				Bulk cement left yard for location
Event	6	Assessment Of Location Safety Meeting	Assessment Of Location Safety Meeting	8/12/2016	18:10:00	USER				Discussed well site hazards and spotting equipment
Event	7	Rig-Up Equipment	Rig-Up Equipment	8/12/2016	18:15:00	USER				
Event	8	Casing on Bottom	Casing on Bottom	8/12/2016	18:40:00	USER				Casing on bottom rig waiting for HES cement to arrive
Event	9	Arrive At Loc	Arrive At Loc	8/12/2016	19:20:00	USER				Bulk cement arrived on location
Event	10	Pre-Job Safety Meeting	Pre-Job Safety Meeting	8/12/2016	19:40:00	USER	8.00	8.41	0.00	Discussed Job procedures
Event	11	Start Job	Start Job	8/12/2016	20:02:00	COM16	16.00	8.43	0.00	
Event	12	Pump Water	Pump Water	8/12/2016	20:04:01	USER	28.00	8.33	0.00	Fill lines 2 bpm 25 psi
Event	13	Pressure Test	Pressure Test	8/12/2016	20:08:22	USER	2524.00	8.42	0.00	2550 PSI good test no leaks
Event	14	Pump Water	Pump Water	8/12/2016	20:19:02	USER	35.00	8.37	0.10	Pump water spacer with Red Dye
Event	15	Shutdown	Shutdown	8/12/2016	20:28:12	USER	37.00	8.39	0.10	Cement bulk line packed off shutdown to fix and line out cement density
Event	16	Resume	Resume	8/12/2016	20:35:08	USER	99.00	8.40	5.00	resume pumping water spacer
Event	17	Pump Cement	Pump Cement	8/12/2016	20:37:00	USER	139.00	13.51	5.60	Mixed & Pumped 565 sks SwiftCem @ 13.5 ppg, 1.74 Y, 9.2

GPS

Event	18	Shutdown	Shutdown	8/12/2016	21:08:12	USER	97.00	13.74	4.80	Drop Top Plug Co Man witnessed
Event	19	Pump Displacement	Pump Fresh water	8/12/2016	21:11:50	USER	11.00	0.19	0.00	Pump 20 bbls fresh water displacement
Event	20	Pump Displacement	Pump Displacement	8/12/2016	21:18:57	USER	74.00	8.79	5.50	Pump 8.7 PPG WBM 97 bbls
Event	21	Pump Displacement	Pump Fresh water Displacement	8/12/2016	21:32:44	USER	433.00	8.71	2.50	Pump 17 bbls fresh water displacement
Event	22	Bump Plug	Bump Plug	8/12/2016	21:38:41	USER	463.00	8.33	2.50	Final Circulating pressure was 470 psi brought pressure up to 1300 psi.
Event	23	Check Floats	Check Floats	8/12/2016	21:41:37	USER	1306.00	8.36	0.00	Floats held .5 bbl back to truck
Event	24	Cement Returns to Surface	Cement Returns to Surface	8/12/2016	21:42:05	USER	1016.00	8.36	0.00	22 bbls cement circulated to surface
Event	25	End Job	End Job	8/12/2016	21:43:00	COM16	31.00	8.34	0.00	
Event	26	Post-Job Safety Meeting (Pre Rig-Down)	Post-Job Safety Meeting (Pre Rig-Down)	8/12/2016	21:50:00	USER	32.00	8.36	0.00	
Event	27	Rig-Down Equipment	Rig-Down Equipment	8/12/2016	22:00:00	USER	57.00	8.36	0.00	Wash up and rig down equipment
Event	28	Pre-Convoy Safety Meeting	Pre-Convoy Safety Meeting	8/12/2016	23:25:00	USER				
Event	29	Depart Location for Shop	Depart Location for Shop	8/12/2016	23:30:00	USER				

3.0 Attachments

3.1 Extraction Oil & Gas Winder South 2 Surface-Custom Results.png



3.2 Extraction Oil & Gas Winder South 2 Surface-Cement .png

