

HALLIBURTON

iCem[®] Service

EXTRACTION OIL & GAS

Date: Monday, August 22, 2016

Winder South #1

Production

Job Date: Sunday, August 21, 2016

Sincerely,
Lauren Roberts

Legal Notice

Warning Disclaimer

Although the information contained in this report is based on sound engineering practices, the copyright owner(s) does (do) not accept any responsibility whatsoever, in negligence or otherwise, for any loss or damage arising from the possession or use of the report whether in terms of correctness or otherwise. The application, therefore, by the user of this report or any part thereof, is solely at the user's own risk.

Limitations of Liability

Except as expressly set forth herein, there are no representations or warranties by Halliburton, express or implied, including implied warranties of merchantability and/or fitness for a particular purpose. In no event will Halliburton or its suppliers be liable for consequential, incidental, special, punitive or exemplary damages (including, without limitation, loss of data, profits, use of hardware, or software). Customer accepts full responsibility for any investment made based on results from the Software. Any interpretations, analyses or modeling of any data, including, but not limited to Customer data, and any recommendation or decisions based upon such interpretations, analyses or modeling are opinions based upon inferences from measurements and empirical relationships and assumptions, which inferences and assumptions are not infallible, and with respect to which professional may differ. Accordingly, Halliburton cannot and does not warrant the accuracy, correctness or completeness of any such interpretation, recommendation, modeling or other products of the Software Product. As such, any interpretation, recommendation or modeling resulting from the Software for the purpose of any drilling, well treatment, production or financial decision will be at the sole risk of Customer. Under no circumstances will Halliburton or its suppliers be liable for any damages.

Table of Contents

1.0 Cementing Job Summary 4

 1.1 Executive Summary4

2.0 Real-Time Job Summary 7

 2.1 Job Event Log7

1.0 Cementing Job Summary

1.1 Executive Summary

Halliburton appreciates the opportunity to perform the cementing services on the **Winder South #1** cement **Production** casing job. A pre-job safety meeting was held before the job where details of the job were discussed, potential safety hazards were reviewed, and environmental compliance procedures were outlined.

Halliburton maintains a continuous quality improvement process and appreciates any comments or suggestions that you may have. Halliburton again thanks you for the opportunity to perform service work on this well. We hope to be your solutions provider for future projects.

Respectfully,

Halliburton [Ft. Lupton]

The Road to Excellence Starts with Safety

Sold To #: 369404		Ship To #: 3749842		Quote #:		Sales Order #: 0903485911				
Customer: EXTRACTION OIL & GAS				Customer Rep: HUGH MCGRAW						
Well Name: WINDER SOUTH			Well #: 1		API/UWI #: 05-123-43402-00					
Field: WATTENBERG		City (SAP): WINDSOR		County/Parish: WELD		State: COLORADO				
Legal Description: SE NE-9-6N-67W-2306FNL-528FEL										
Contractor: PATTERSON-UTI ENERGY				Rig/Platform Name/Num: PATTERSON 346						
Job BOM: 7523										
Well Type: HORIZONTAL OIL										
Sales Person: HALAMERICA\HX38199				Srv Supervisor: Shayne Bitton						
Job										
Formation Name										
Formation Depth (MD)		Top		Bottom						
Form Type				BHST						
Job depth MD		16906ft		Job Depth TVD						
Water Depth				Wk Ht Above Floor						
Perforation Depth (MD)		From		To						
Well Data										
Description	New / Used	Size in	ID in	Weight lbm/ft	Thread	Grade	Top MD ft	Bottom MD ft	Top TVD ft	Bottom TVD ft
Casing		9.625	8.921	36			0	1550		0
Casing		5.5	4.778	20			0	16813	0	0
Open Hole Section			7.875				1550	16960	1550	7190
Tools and Accessories										
Type	Size in	Qty	Make	Depth ft		Type	Size in	Qty	Make	
Guide Shoe	5.5					Top Plug	5.5		HES	
Float Shoe	5.5			16913		Bottom Plug	5.5		HES	
Float Collar	5.5			16911		SSR plug set	5.5		HES	
Insert Float	5.5					Plug Container	5.5		HES	
Stage Tool	5.5					Centralizers	5.5		HES	
Fluid Data										
Stage/Plug #: 1										
Fluid #	Stage Type	Fluid Name	Qty	Qty UoM	Mixing Density lbm/gal	Yield ft3/sack	Mix Fluid Gal	Rate bbl/min	Total Mix Fluid Gal	
1	11.5 lb/gal Tuned Spacer III	Tuned Spacer III	50	bbl	11.5	3.74		5		
149.34 lbm/bbl		BARITE, BULK (100003681)								
35.40 gal/bbl		FRESH WATER								

0.30 gal/bbl		DUAL SPACER SURFACTANT B, 5 GAL PAIL (100003665)							
0.30 gal/bbl		MUSOL A, 330 GAL TOTE - (790828)							
Fluid #	Stage Type	Fluid Name	Qty	Qty UoM	Mixing Density lbm/gal	Yield ft3/sack	Mix Fluid Gal	Rate bbl/min	Total Mix Fluid Gal
2	ElastiCem	ELASTICEM (TM) SYSTEM	150	sack	13.2	1.572		7	7.48
7.48 Gal		FRESH WATER							
0.90 %		HR-5, 50 LB SK (100005050)							
Fluid #	Stage Type	Fluid Name	Qty	Qty UoM	Mixing Density lbm/gal	Yield ft3/sack	Mix Fluid Gal	Rate bbl/min	Total Mix Fluid Gal
3	ElastiCem W/ Super CBL	ELASTICEM (TM) SYSTEM	1950	sack	13.2	1.57		7	7.49
7.49 Gal		FRESH WATER							
0.80 %		HR-5, 50 LB SK (100005050)							
Fluid #	Stage Type	Fluid Name	Qty	Qty UoM	Mixing Density lbm/gal	Yield ft3/sack	Mix Fluid Gal	Rate bbl/min	Total Mix Fluid Gal
4	Displacement	Displacement	373	bbl	8.33			10	
Cement Left In Pipe		Amount	0 ft		Reason			Shoe Joint	
Comment									

2.0 Real-Time Job Summary

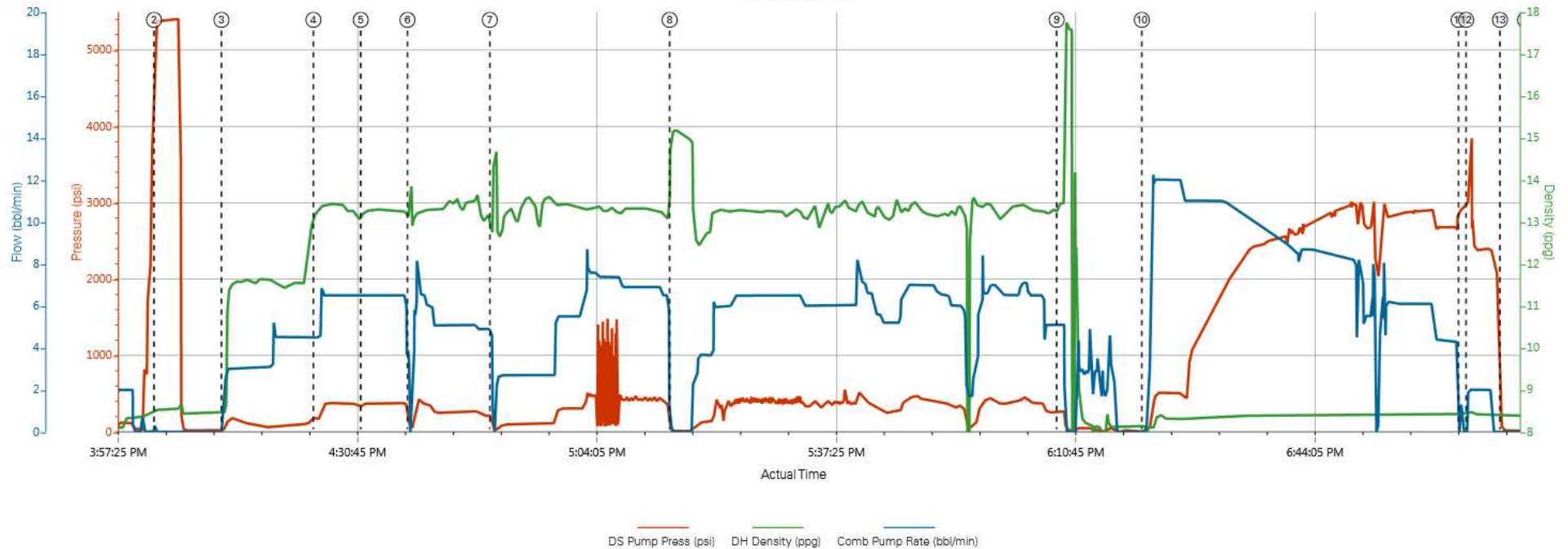
2.1 Job Event Log

Type	Seq. No.	Activity	Graph Label	Date	Time	Source	Downhole Density (ppg)	Pump Rate (bbl/min)	Pump Pressure (psi)	Pump Total (bbl)	Comments
Event	1	Start Job	Start Job 15:56	8/21/2016	15:56:22	COM1	8.30	0.00	11.00	0.0	Start job, fill lines with 5 bbls of FW ahead. Returns verified.
Event	2	Pressure Test	Pressure Test 16:02	8/21/2016	16:02:45	USER	8.53	0.00	5524.00	5.1	Pressure test to 5000 psi. pressure test was conducted in accordance with HMS.
Event	3	Pump Spacer	Pump Spacer 16:12	8/21/2016	16:12:08	USER	8.45	1.70	43.00	5.2	pumped 50 bbls of 11.5 ppg tuned spacer III. density was verified with pressurized mud scales in accordance with HMS.
Event	4	Pump Lead Cement	Pump Lead Cement 16:24	8/21/2016	16:24:56	COM1	13.22	4.50	189.00	52.7	pumped 150 sks of ElastiCem at 13.2 ppg, 1.572 ft3/sk and 7.48 gal/sk. density was verified with pressurized mud scales in accordance with HMS.
Event	5	Pump Tail Cement	Pump Tail Cement 16:31	8/21/2016	16:31:32	COM1					Pumped 1950 sks of ElastiCem at 13.2 ppg , 1.57 ft3/sk and 7.49 gal/sk. density was verified with pressurized mud scales in accordance with HMS.
Event	6	Shutdown	Shutdown 16:38	8/21/2016	16:38:03	USER	13.50	0.00	58.00	134.4	Shutdown incurred due to bulk cement delivery issues.
Event	7	Shutdown	Shutdown 16:49	8/21/2016	16:49:31	USER	12.73	1.70	135.00	193.3	Shut-down incurred due to RCM mixing bulk throttling valve not responding.
Event	8	Shutdown	Shutdown 17:14	8/21/2016	17:14:33	USER	15.13	0.10	3.00	321.1	Shutdown incurred due to RCM mixing sleeve pack off.
Event	9	Shutdown	Shutdown 18:08	8/21/2016	18:08:27	USER	13.45	5.10	267.00	628.0	Shutdown after pumping tail cement. Pumps and lines flushed to catch tank. KLX rep and HES dropped 3rd party plug. Plug launch confirmed.
Event	10	Pump Displacement	Pump Displacement 18:20	8/21/2016	18:20:19	COM1	8.14	0.00	-13.00	646.5	Pumped 373 bbls of FW displacement. KLX rep on mixing unit throughout displacement.
Event	11	Shutdown	Shutdown 19:04	8/21/2016	19:04:26	USER	8.44	1.30	2937.00	1010.9	Shutdown after pumping 373 bbls of FW

displacement. Final circulating pressure was 2619 psi.

Event	12	Pump Displacement	Pump Displacement 19:05	8/21/2016	19:05:28	USER	8.46	2.00	3198.00	1011.2	Pumped 5 bbls after disc burst for wet shoe
Event	13	Shutdown	Shutdown 19:10	8/21/2016	19:10:11	USER	8.39	0.00	10.00	1017.6	shutdown after pumping wet shoe. Checked floats, got 3 bbls back.
Event	14	End Job	End Job 19:13	8/21/2016	19:13:41	USER	8.38	0.00	-16.00	1017.6	End Job.

Custom Results



① Start Job 15:56:2;8.3;0	④ Pump Lead Cement 16:24:180;13.22;4.5	⑦ Shutdown 16:49:139;12.73;1.7	⑩ Pump Displacement 18:20:5;8.14;0	⑬ Shutdown 19:10:40;8.39;0
② Pressure Test 16:02:5382;8.53;0	⑤ Pump Tail Cement 16:31:386.42;13.19;6.5	⑧ Shutdown 17:14:18;15.13;0.1	⑪ Shutdown 19:04:2909;8.44;1.3	⑭ End Job 19:13:12;8.38;0
③ Pump Spacer 16:12:31;8.45;1.7	⑥ Shutdown 16:38:68;13.5;0	⑨ Shutdown 18:08:276;13.45;5.1	⑫ Pump Displacement 19:05:3153;8.46;2	

