

K:\LAND\2013\2013_90_COLORADO_T2N_R67W_SEC_10_EAST\PLATS\BUTTERBALL_25C-34HZ.dwg, 10/20/2016 8:43:52 AM, lba

T2N, R67W

NW. COR.
SEC. 10, T2N, R67W
FOUND 2 1/2" ALUM. CAP
ILLEGIBLE

N. 1/4 COR.
SEC. 10, T2N, R67W
FOUND 3 1/4" ALUM. CAP
L.S. NO. 23500

WELL BORE CONTINUES
INTO SECTION 3

MATCH LINE
SEE SHEET 2

NE. COR.
SEC. 10, T2N, R67W
FOUND 3 1/4" BRASS CAP
ILLEGIBLE

S 89°43'24" W 2625.06' (M)

S 89°57'01" W 2615.24' (M)

N 00°09'14" W 2626.22' (M)

2325'

820'

N 00°12'55" W
2638.99' (M)

BUTTERBALL
10N-34HZ
SURFACE LOCATION

N 00°05'23" W 2641.14' (M)

W. 1/4 COR.
SEC. 10, T2N, R67W
FOUND 2 1/2" ALUM. CAP
L.S. NO. 25937

N 89°59'53" W
2627.88' (M)

S 89°59'51" W
2609.46' (M)

E. 1/4 COR.
SEC. 10, T2N, R67W
FOUND 3 1/4" BLM BRASS CAP

10

CENTER 1/4 COR.
SEC. 10, T2N, R67W
FOUND 2 1/2" ALUM. CAP
P.L.S. NO. 38345

SURFACE LOCATION: NAD 83
GROUND ELEVATION=4934.4'
LATITUDE= 40.157638°
LONGITUDE= -104.877564°
LATITUDE= 40°09'27.497"
LONGITUDE= -104°52'39.232"
HEEL LOCATION: NAD 83
LATITUDE= 40.160157°
LONGITUDE= -104.874379°
LATITUDE= 40°09'36.565"
LONGITUDE= -104°52'27.763"
BOTTOM HOLE LOCATION: NAD 83
LATITUDE= 40.181720°
LONGITUDE= -104.874421°
LATITUDE= 40°10'54.192"
LONGITUDE= -104°52'27.916"

N 00°12'56" W
2629.52' (M)

N 00°01'50" E 2633.33' (M)

SW. COR.
SEC. 10, T2N, R67W
FOUND 2 1/2" ALUM. CAP
L.S. NO. 14823

N 89°56'11" W 2630.74' (M)

S. 1/4 COR.
SEC. 10, T2N, R67W
FOUND 3 1/4" ALUM. CAP
P.L.S. NO. 13258

N 89°55'04" W 2598.17' (M)

SE. COR.
SEC. 10, T2N, R67W
FOUND 3 1/4" ALUM. CAP
L.S. NO. 12330

NOTES:

- ▲ INDICATES SECTION CORNER
- INDICATES CALCULATED CORNER
- ELEVATION BASED ON NAVD88 (GEOID12B)
- BASIS OF BEARING DERIVED FROM COLORADO COORDINATE SYSTEM OF 1983 NORTH ZONE.
- ALL MEASURED DISTANCES ARE GRID.
COMBINED SCALE FACTOR: .99972597 CALCULATED FROM THE N. 1/4 CORNER OF SECTION 10, T2N, R67W
- OPERATOR: ROB WILSON / PDOP = 1.1
- SEE ADDENDUM TO WELL LOCATION CERTIFICATE FOR EXISTING IMPROVEMENTS WITHIN 500' OF THE WELL PAD.
- WELL FOOTAGES ARE MEASURED AT RIGHT ANGLES TO THE SECTION LINES.
- THE BOTTOM OF HOLE BEARS N00°29'25"W, 7855' FROM THE HEEL LOCATION.

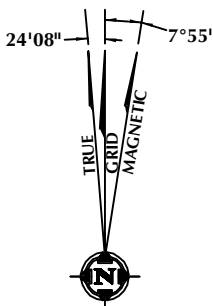


CERTIFICATE OF SURVEYOR:

THIS IS TO CERTIFY THAT THE ABOVE PLAT WAS PREPARED FROM FIELD NOTES OF ACTUAL SURVEY MADE BY ME OR UNDER MY SUPERVISION AND THAT THE SAME ARE TRUE AND CORRECT TO THE BEST OF MY KNOWLEDGE AND BELIEF. THIS CERTIFICATE DOES NOT REPRESENT A LAND SURVEY PLAT OR IMPROVEMENT SURVEY PLAT AS DEFINED BY C.R.S. 38-51-102 AND CANNOT BE RELIED UPON TO DETERMINE OWNERSHIP.

Randall K. French
RANDALL K. FRENCH
PROFESSIONAL LAND SURVEYOR
COLORADO REGISTRATION NUMBER 38512

NOTICE:
ACCORDING TO COLORADO STATE LAW YOU MUST COMMENCE ANY LEGAL ACTION BASED UPON ANY DEFECT IN THIS SURVEY WITHIN THREE YEARS AFTER YOU FIRST DISCOVER SUCH DEFECT. IN NO EVENT MAY ANY ACTION BASED UPON ANY DEFECT IN THIS SURVEY BE COMMENCED MORE THAN TEN YEARS FROM THE DATE ON THE CERTIFICATION SHOWN HEREON.



WELL PAD - BUTTERBALL 25C-34HZ

BUTTERBALL 10N-34HZ
WELL LOCATION CERTIFICATE
820' FNL & 2325' FWL NENW (SURFACE)
LOCATED IN SECTION 10
102' FSL & 2030' FEL SWSE (HEEL)
LOCATED IN SECTION 3
T2N, R67W, 6TH P.M.
2579' FSL & 2036' FEL NWSE (BOTTOM)
LOCATED IN SECTION 34
T3N, R67W, 6TH P.M.
WELD COUNTY, COLORADO

Kerr-McGee Oil &
Gas Onshore L.P.
1099 18th Street
Denver, Colorado 80202



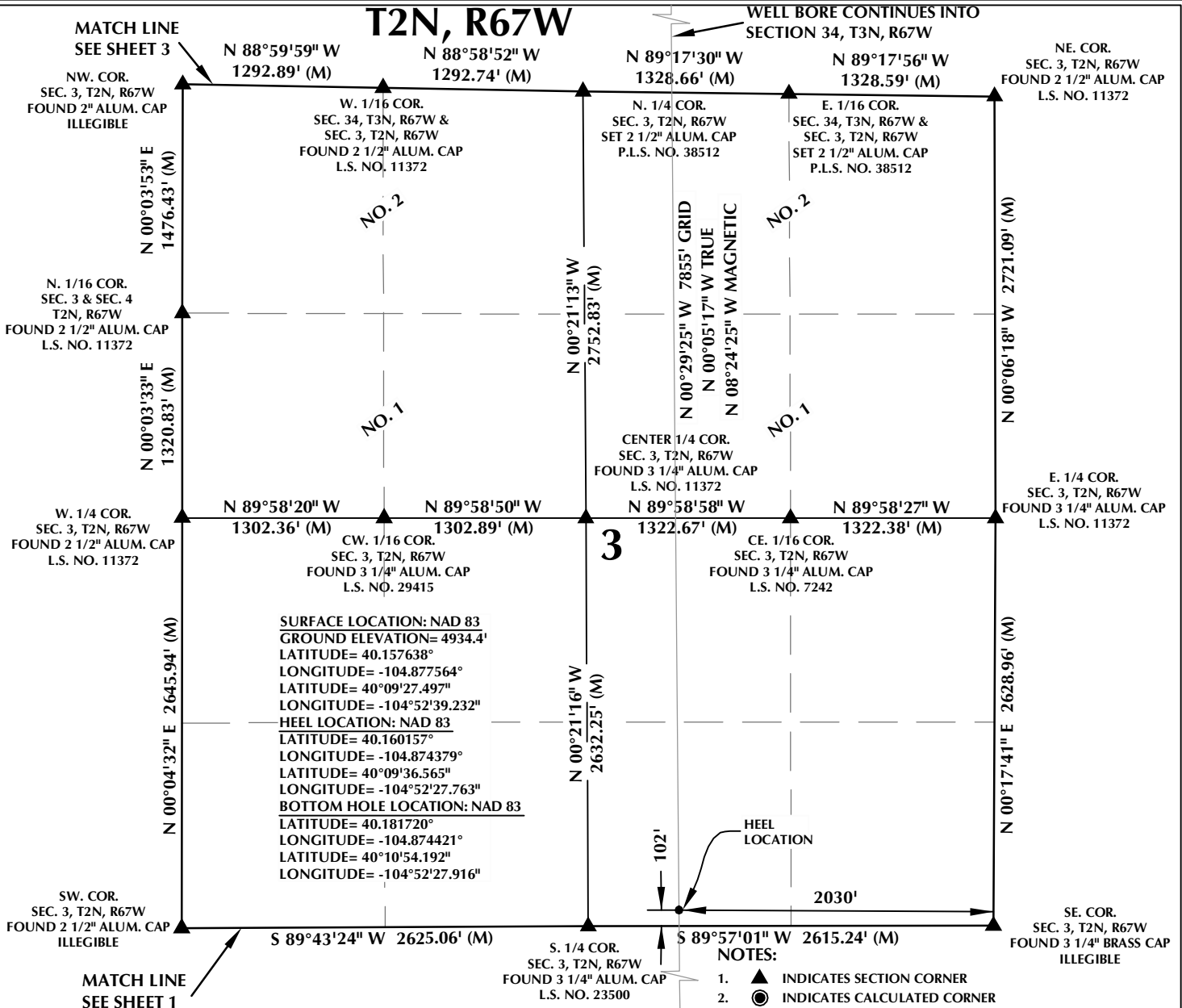
CONSULTING, LLC

SHERIDAN OFFICE
1095 Saberton Avenue
Sheridan, Wyoming 82801
Phone 307-674-0609

LOVELAND OFFICE
1635 Foxtrail Drive, Suite 204
Loveland, Colorado 80538
Phone 970-776-4331

| | | | | |
|---------------|----------|----------------|---------|-----------|
| DRAFTED BY: | LMO | CHECKED BY: | RKF | SHEET NO: |
| DATE DRAFTED: | 10/19/16 | DATE SURVEYED: | 7/26/16 | 1 |
| REVISED: | | FILE NAME: | 13-90 | 1 OF 3 |

T2N, R67W



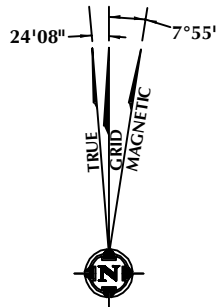
CERTIFICATE OF SURVEYOR:

THIS IS TO CERTIFY THAT THE ABOVE PLAT WAS PREPARED FROM FIELD NOTES OF ACTUAL SURVEY MADE BY ME OR UNDER MY SUPERVISION AND THAT THE SAME ARE TRUE AND CORRECT TO THE BEST OF MY KNOWLEDGE AND BELIEF. THIS CERTIFICATE DOES NOT REPRESENT A LAND SURVEY OR IMPROVEMENT SURVEY PLAT AS DEFINED BY C.R.S. 38-51-102 AND CANNOT BE RELIED UPON TO DETERMINE OWNERSHIP.

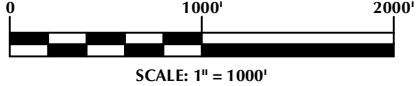
Randall K. French
 RANDALL K. FRENCH
 PROFESSIONAL LAND SURVEYOR
 COLORADO REGISTRATION NUMBER 38512

NOTICE: ACCORDING TO COLORADO STATE LAW YOU MUST COMMENCE ANY LEGAL ACTION BASED UPON ANY DEFECT IN THIS SURVEY WITHIN THREE YEARS AFTER YOU FIRST DISCOVER SUCH DEFECT. IN NO EVENT MAY ANY ACTION BASED UPON ANY DEFECT IN THIS SURVEY BE COMMENCED MORE THAN TEN YEARS FROM THE DATE ON THE CERTIFICATION SHOWN HEREON.

NOTE: MAGNETIC NORTH IS CURRENT AS OF 10/10/2016. MAGNETIC NORTH CHANGES WEST 0°06' PER YEAR.



- NOTES:
- INDICATES SECTION CORNER
 - INDICATES CALCULATED CORNER
 - ELEVATION BASED ON NAVD88 (GEOID12B)
 - BASIS OF BEARING DERIVED FROM COLORADO COORDINATE SYSTEM OF 1983 NORTH ZONE.
 - ALL MEASURED DISTANCES ARE GRID. COMBINED SCALE FACTOR: .99972597 CALCULATED FROM THE N. 1/4 CORNER OF SECTION 10, T2N, R67W
 - OPERATOR: ROB WILSON / PDOP = 1.1
 - SEE ADDENDUM TO WELL LOCATION CERTIFICATE FOR EXISTING IMPROVEMENTS WITHIN 500' OF THE WELL PAD.
 - WELL FOOTAGES ARE MEASURED AT RIGHT ANGLES TO THE SECTION LINES.
 - THE BOTTOM OF HOLE BEARS N00°29'25"W, 7855' FROM THE HEEL LOCATION.
 - NO. 1 & NO. 2 AS SHOWN HEREON ARE GOVERNMENT LOTS 1 & 2 PER THE ORIGINAL GLO SURVEY



WELL PAD - BUTTERBALL 25C-34HZ

BUTTERBALL 10N-34HZ
 WELL LOCATION CERTIFICATE
 820' FNL & 2325' FWL NNW (SURFACE)
 LOCATED IN SECTION 10
 102' FSL & 2030' FEL SWSE (HEEL)
 LOCATED IN SECTION 3
 T2N, R67W, 6TH P.M.
 2579' FSL & 2036' FEL NWSE (BOTTOM)
 LOCATED IN SECTION 34
 T3N, R67W, 6TH P.M.
 WELD COUNTY, COLORADO

**Kerr-McGee Oil &
 Gas Onshore L.P.**
 1099 18th Street
 Denver, Colorado 80202



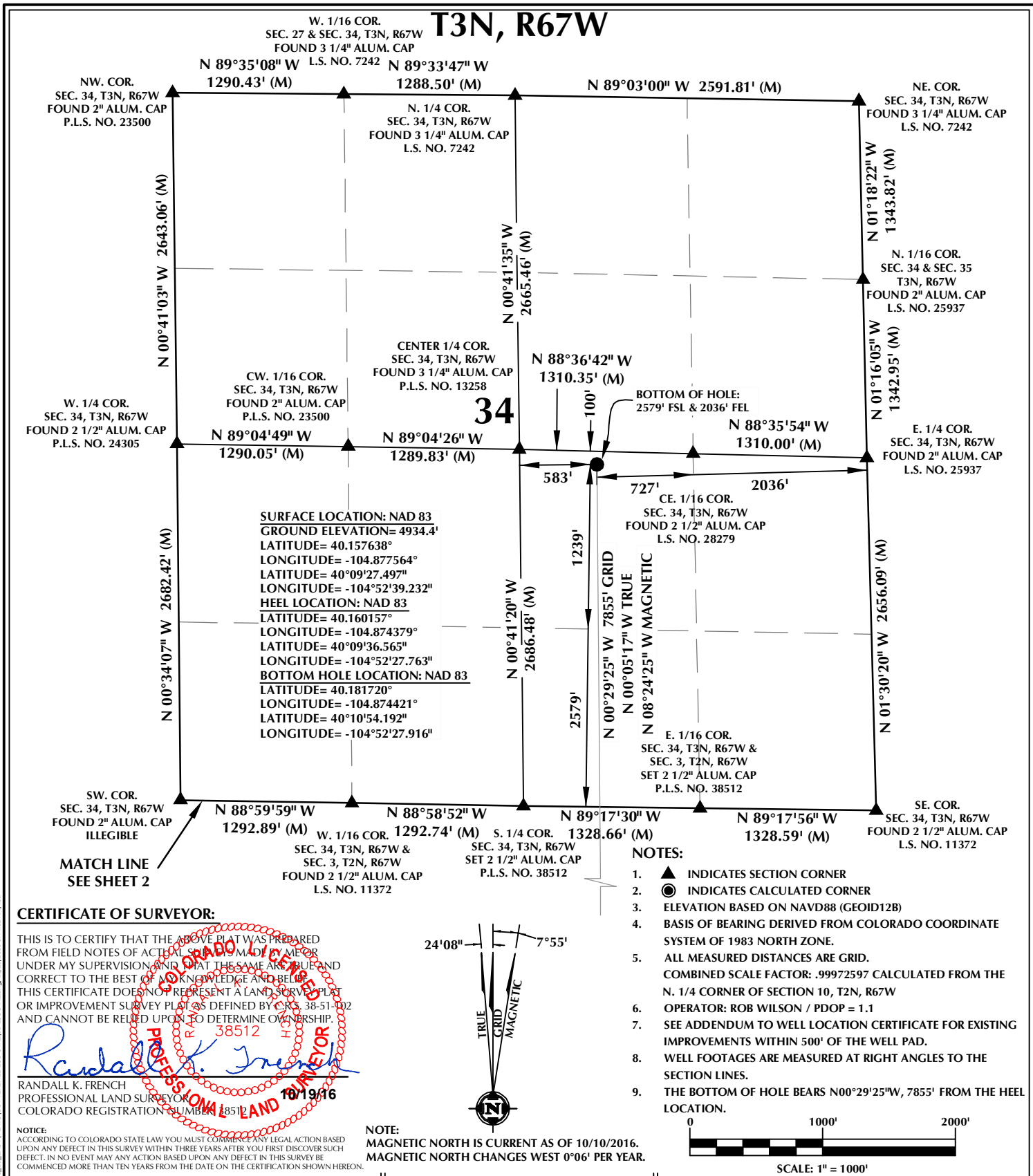
CONSULTING, LLC

SHERIDAN OFFICE
 1095 Saberton Avenue
 Sheridan, Wyoming 82801
 Phone 307-674-0609

LOVELAND OFFICE
 1635 Foxtrail Drive, Suite 204
 Loveland, Colorado 80538
 Phone 970-776-4331

| | | | | |
|---------------|----------|----------------|---------|-----------|
| DRAFTED BY: | LMO | CHECKED BY: | RKF | SHEET NO: |
| DATE DRAFTED: | 10/19/16 | DATE SURVEYED: | 7/26/16 | 2 |
| REVISED: | | FILE NAME: | 13-90 | 2 OF 3 |

K:\AMDAR\2013\2013.90 COLORADO T2N R67W SEC. 10 EAST\PLATS\BUTTERBALL 25C-34HZ.dwg 10/20/2016 8:44:02 AM lba



| | | | | |
|--|--|---|---|--|
| WELL PAD - BUTTERBALL 25C-34HZ | Kerr-McGee Oil & Gas Onshore L.P. |  | CONSULTING, LLC | |
| BUTTERBALL 10N-34HZ WELL LOCATION CERTIFICATE 820' FNL & 2325' FWL NNW (SURFACE) LOCATED IN SECTION 10 102' FSL & 2030' FEL SWSE (HEEL) LOCATED IN SECTION 3 T2N, R67W, 6TH P.M. 2579' FSL & 2036' FEL NWSE (BOTTOM) LOCATED IN SECTION 34 T3N, R67W, 6TH P.M. WELD COUNTY, COLORADO | 1099 18th Street Denver, Colorado 80202 | | SHERIDAN OFFICE 1095 Saberton Avenue Sheridan, Wyoming 82801 Phone 307-674-0609 | LOVELAND OFFICE 1635 Foxtrail Drive, Suite 204 Loveland, Colorado 80538 Phone 970-776-4331 |
| | | DRAFTED BY: LMO | CHECKED BY: RKF | SHEET NO: 3 |
| | | DATE DRAFTED: 10/19/16 | DATE SURVEYED: 7/26/16 | 3 OF 3 |
| | | REVISED: | FILE NAME: 13-90 | |