

T2N, R67W

N. 1/4 COR.  
SEC. 10, T2N, R67W  
FOUND 3 1/4" ALUM. CAP  
L.S. NO. 23500

WELL BORE CONTINUES  
INTO SECTION 3

MATCH LINE  
SEE SHEET 2

NW. COR.  
SEC. 10, T2N, R67W  
FOUND 2 1/2" ALUM. CAP  
ILLEGIBLE

NE. COR.  
SEC. 10, T2N, R67W  
FOUND 3 1/4" BRASS CAP  
ILLEGIBLE

S 89°43'24" W 2625.06' (M)

S 89°57'01" W 2615.24' (M)

N 00°09'14" W 2626.22' (M)

2310'

820'

N 00°12'55" W  
2638.99' (M)

**BUTTERBALL  
25C2-34HZ**  
SURFACE LOCATION

N 00°05'23" W 2641.14' (M)

W. 1/4 COR.  
SEC. 10, T2N, R67W  
FOUND 2 1/2" ALUM. CAP  
L.S. NO. 25937

N 89°59'53" W  
2627.88' (M)

S 89°59'51" W  
2609.46' (M)

E. 1/4 COR.  
SEC. 10, T2N, R67W  
FOUND 3 1/4"  
BLM BRASS CAP

10

CENTER 1/4 COR.  
SEC. 10, T2N, R67W  
FOUND 2 1/2" ALUM. CAP  
P.L.S. NO. 38345

SURFACE LOCATION: NAD 83  
GROUND ELEVATION=4934.3'  
LATITUDE= 40.157638°  
LONGITUDE= -104.877618°  
LATITUDE= 40°09'27.498"  
LONGITUDE= -104°52'39.425"  
HEEL LOCATION: NAD 83  
LATITUDE= 40.160157°  
LONGITUDE= -104.874994°  
LATITUDE= 40°09'36.566"  
LONGITUDE= -104°52'29.979"  
BOTTOM HOLE LOCATION: NAD 83  
LATITUDE= 40.181735°  
LONGITUDE= -104.875040°  
LATITUDE= 40°10'54.246"  
LONGITUDE= -104°52'30.144"

N 00°12'56" W  
2629.52' (M)

N 00°01'50" E 2633.33' (M)

SW. COR.  
SEC. 10, T2N, R67W  
FOUND 2 1/2" ALUM. CAP  
L.S. NO. 14823

N 89°56'11" W 2630.74' (M)

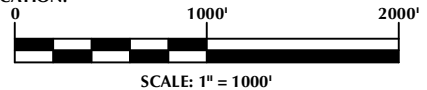
S. 1/4 COR.  
SEC. 10, T2N, R67W  
FOUND 3 1/4" ALUM. CAP  
P.L.S. NO. 13258

N 89°55'04" W 2598.17' (M)

SE. COR.  
SEC. 10, T2N, R67W  
FOUND 3 1/4" ALUM. CAP  
L.S. NO. 12330

#### NOTES:

- ▲ INDICATES SECTION CORNER
- INDICATES CALCULATED CORNER
- ELEVATION BASED ON NAVD88 (GEOID12B)
- BASIS OF BEARING DERIVED FROM COLORADO COORDINATE SYSTEM OF 1983 NORTH ZONE.
- ALL MEASURED DISTANCES ARE GRID.  
COMBINED SCALE FACTOR: .99972597 CALCULATED FROM THE N. 1/4 CORNER OF SECTION 10, T2N, R67W
- OPERATOR: ROB WILSON / PDOP = 1.1
- SEE ADDENDUM TO WELL LOCATION CERTIFICATE FOR EXISTING IMPROVEMENTS WITHIN 500' OF THE WELL PAD.
- WELL FOOTAGES ARE MEASURED AT RIGHT ANGLES TO THE SECTION LINES.
- THE BOTTOM OF HOLE BEARS N00°29'50"W, 7860' FROM THE HEEL LOCATION.

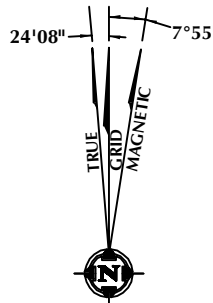


#### CERTIFICATE OF SURVEYOR:

THIS IS TO CERTIFY THAT THE ABOVE PLAT WAS PREPARED FROM FIELD NOTES OF ACTUAL SURVEY MADE BY ME OR UNDER MY SUPERVISION AND THAT THE SAME ARE TRUE AND CORRECT TO THE BEST OF MY KNOWLEDGE AND BELIEF. THIS CERTIFICATE DOES NOT REPRESENT A LAND SURVEY PLAT OR IMPROVEMENT SURVEY PLAT AS DEFINED BY C.R.S. 38-51-102 AND CANNOT BE RELIED UPON TO DETERMINE OWNERSHIP.

*Randall K. French*  
RANDALL K. FRENCH  
PROFESSIONAL LAND SURVEYOR  
COLORADO REGISTRATION NUMBER 18512

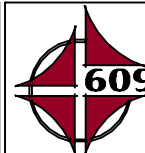
NOTICE:  
ACCORDING TO COLORADO STATE LAW YOU MUST COMMENCE ANY LEGAL ACTION BASED UPON ANY DEFECT IN THIS SURVEY WITHIN THREE YEARS AFTER YOU FIRST DISCOVER SUCH DEFECT. IN NO EVENT MAY ANY ACTION BASED UPON ANY DEFECT IN THIS SURVEY BE COMMENCED MORE THAN TEN YEARS FROM THE DATE ON THE CERTIFICATION SHOWN HEREON.



#### WELL PAD - BUTTERBALL 25C-34HZ

BUTTERBALL 25C2-34HZ  
WELL LOCATION CERTIFICATE  
820' FNL & 2310' FWL NENW (SURFACE)  
LOCATED IN SECTION 10  
101' FSL & 2202' FEL SWSE (HEEL)  
LOCATED IN SECTION 3  
T2N, R67W, 6TH P.M.  
2581' FSL & 2209' FEL NWSE (BOTTOM)  
LOCATED IN SECTION 34  
T3N, R67W, 6TH P.M.  
WELD COUNTY, COLORADO

**Kerr-McGee Oil &  
Gas Onshore L.P.**  
1099 18th Street  
Denver, Colorado 80202



#### CONSULTING, LLC

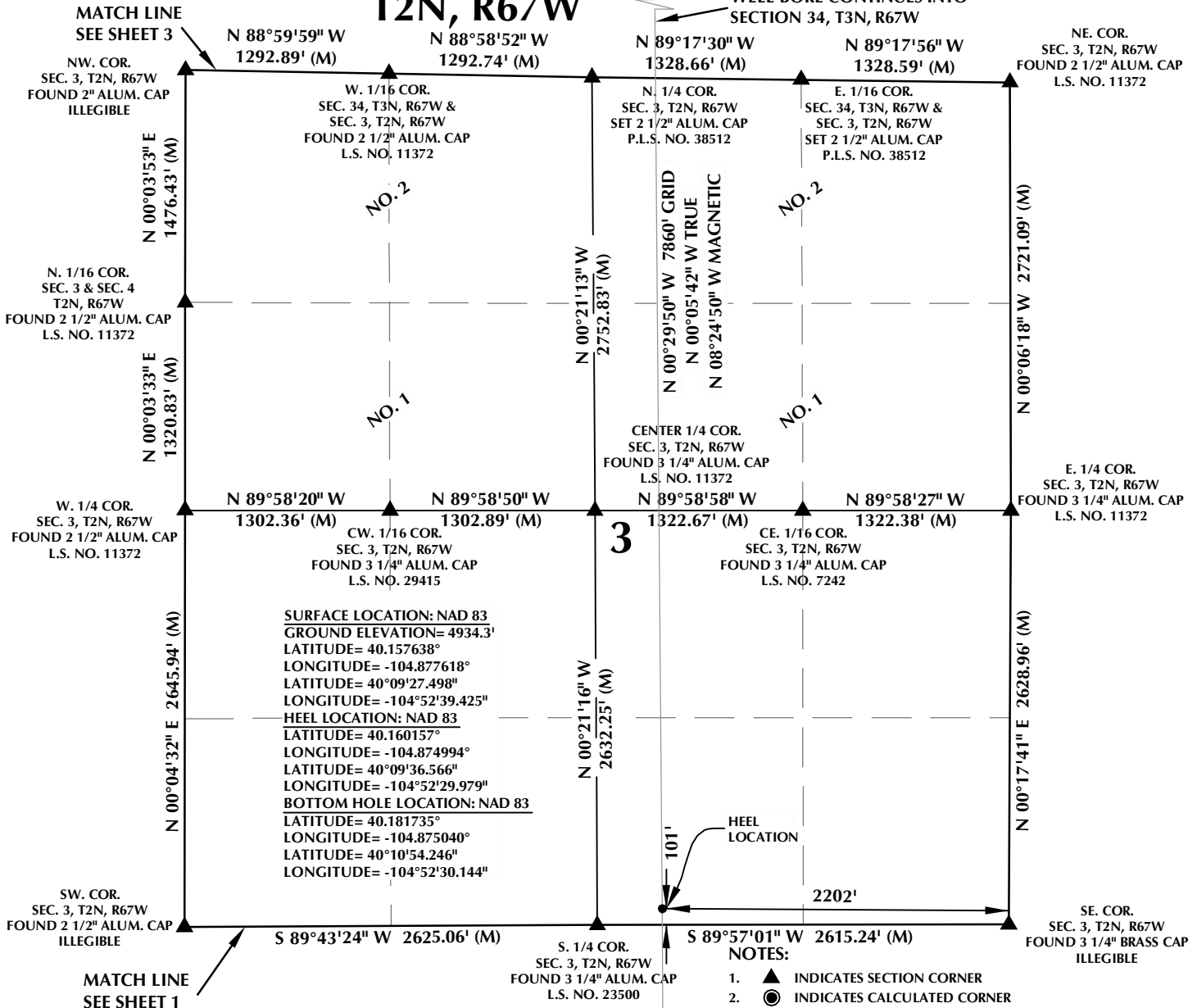
SHERIDAN OFFICE  
1095 Saberton Avenue  
Sheridan, Wyoming 82801  
Phone 307-674-0609

LOVELAND OFFICE  
1635 Foxtrail Drive, Suite 204  
Loveland, Colorado 80538  
Phone 970-776-4331

DRAFTED BY:	LMO	CHECKED BY:	RKF	SHEET NO:
DATE DRAFTED:	10/19/16	DATE SURVEYED:	7/26/16	1
REVISED:		FILE NAME:	13-90	1 OF 3

# T2N, R67W

WELL BORE CONTINUES INTO  
SECTION 34, T3N, R67W



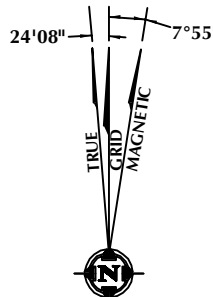
## CERTIFICATE OF SURVEYOR:

THIS IS TO CERTIFY THAT THE ABOVE PLAT WAS PREPARED FROM FIELD NOTES OF ACTUAL SURVEY MADE BY ME OR UNDER MY SUPERVISION AND THAT THE SAME ARE TRUE AND CORRECT TO THE BEST OF MY KNOWLEDGE AND BELIEF. THIS CERTIFICATE DOES NOT REPRESENT A LAND SURVEY OR IMPROVEMENT SURVEY PLAT AS DEFINED BY C.R.S. 38-51-102 AND CANNOT BE RELIED UPON TO DETERMINE OWNERSHIP.

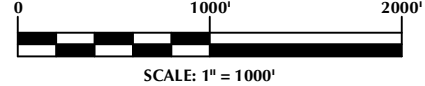
*Randall K. French*  
**Randall K. French**  
 PROFESSIONAL LAND SURVEYOR  
 COLORADO REGISTRATION NUMBER 18512

NOTE: ACCORDING TO COLORADO STATE LAW YOU MUST COMMENCE ANY LEGAL ACTION BASED UPON ANY DEFECT IN THIS SURVEY WITHIN THREE YEARS AFTER YOU FIRST DISCOVER SUCH DEFECT. IN NO EVENT MAY ANY ACTION BASED UPON ANY DEFECT IN THIS SURVEY BE COMMENCED MORE THAN TEN YEARS FROM THE DATE ON THE CERTIFICATION SHOWN HEREON.

NOTE: MAGNETIC NORTH IS CURRENT AS OF 10/10/2016. MAGNETIC NORTH CHANGES WEST 0°06' PER YEAR.



- NOTES:
- ▲ INDICATES SECTION CORNER
  - INDICATES CALCULATED CORNER
  - ELEVATION BASED ON NAVD88 (GEOID12B)
  - BASIS OF BEARING DERIVED FROM COLORADO COORDINATE SYSTEM OF 1983 NORTH ZONE.
  - ALL MEASURED DISTANCES ARE GRID.
  - COMBINED SCALE FACTOR: .99972597 CALCULATED FROM THE N. 1/4 CORNER OF SECTION 10, T2N, R67W
  - OPERATOR: ROB WILSON / PDOP = 1.1
  - SEE ADDENDUM TO WELL LOCATION CERTIFICATE FOR EXISTING IMPROVEMENTS WITHIN 500' OF THE WELL PAD.
  - WELL FOOTAGES ARE MEASURED AT RIGHT ANGLES TO THE SECTION LINES.
  - THE BOTTOM OF HOLE BEARS N00°29'50"W, 7860' FROM THE HEEL LOCATION.
  - NO. 1 & NO. 2 AS SHOWN HEREON ARE GOVERNMENT LOTS 1 & 2 PER THE ORIGINAL GLO SURVEY



## WELL PAD - BUTTERBALL 25C-34HZ

BUTTERBALL 25C-34HZ  
 WELL LOCATION CERTIFICATE  
 820' FNL & 2310' FWL NENW (SURFACE)  
 LOCATED IN SECTION 10  
 101' FSL & 2202' FEL SWSE (HEEL)  
 LOCATED IN SECTION 3  
 T2N, R67W, 6TH P.M.  
 2581' FSL & 2209' FEL NWSE (BOTTOM)  
 LOCATED IN SECTION 34  
 T3N, R67W, 6TH P.M.  
 WELD COUNTY, COLORADO

**Kerr-McGee Oil &  
 Gas Onshore L.P.**  
 1099 18th Street  
 Denver, Colorado 80202



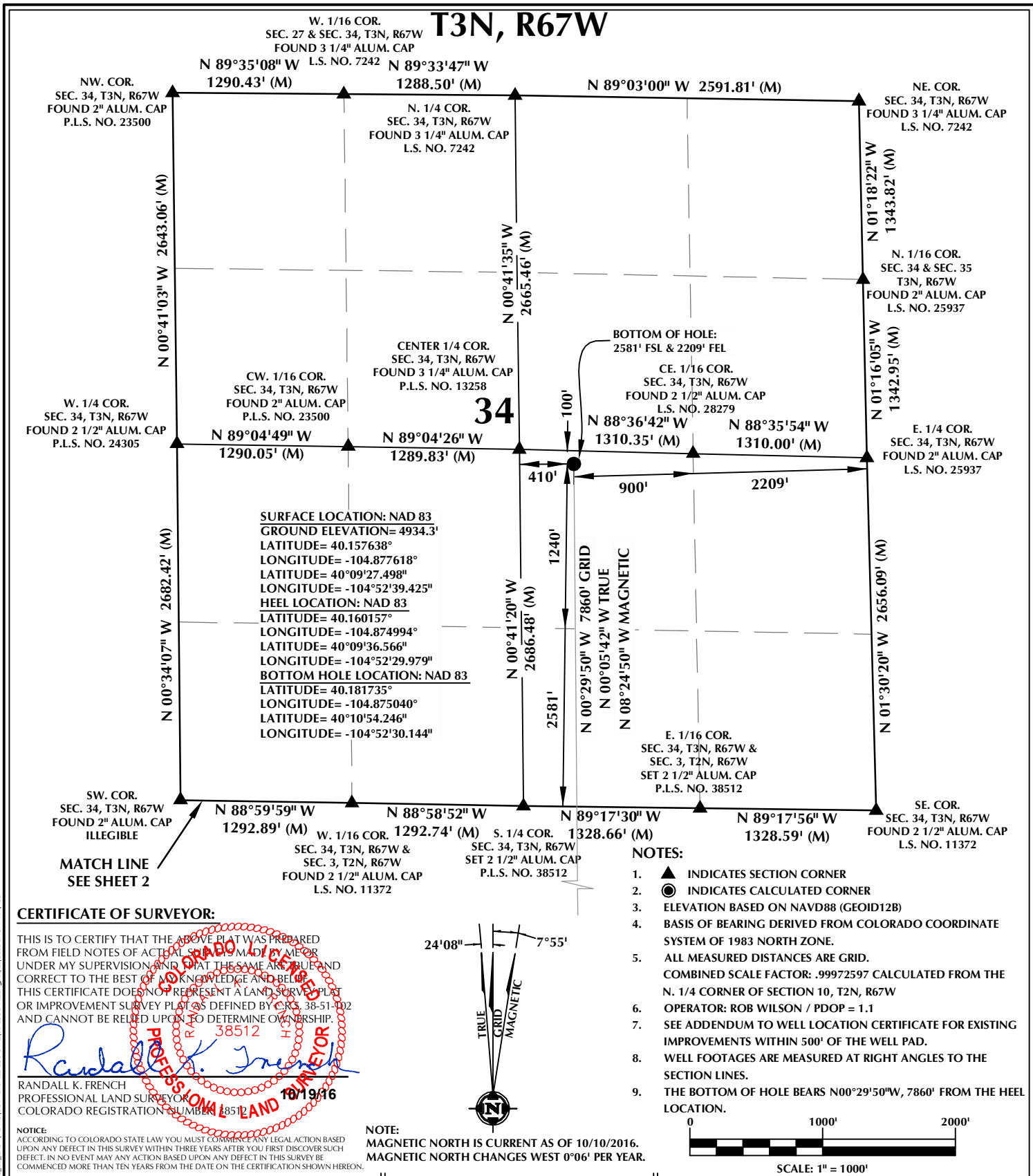
## CONSULTING, LLC

**SHERIDAN OFFICE**  
 1095 Saberton Avenue  
 Sheridan, Wyoming 82801  
 Phone 307-674-0609

**LOVELAND OFFICE**  
 1635 Foxtrail Drive, Suite 204  
 Loveland, Colorado 80538  
 Phone 970-776-4331

DRAFTED BY:	LMO	CHECKED BY:	RKF	SHEET NO:
DATE DRAFTED:	10/19/16	DATE SURVEYED:	7/26/16	2
REVISED:		FILE NAME:	13-90	2 OF 3

K:\MADARKO\2013\2013.90 COLORADO T2N, R67W, SEC. 10 EAST\PLATS\BUTTERBALL 25C-34HZ.dwg, 10/20/2016 8:43:47 AM, lba



<div>WELL PAD - BUTTERBALL 25C-34HZ</div>		<div>Kerr-McGee Oil &amp; Gas Onshore L.P.</div> <div>1099 18th Street Denver, Colorado 80202</div>	<div>609</div> <div>SHERIDAN OFFICE 1095 Saberton Avenue Sheridan, Wyoming 82801 Phone 307-674-0609</div> <div>LOVELAND OFFICE 1635 Foxtrail Drive, Suite 204 Loveland, Colorado 80538 Phone 970-776-4331</div> <div>CONSULTING, LLC</div>			
<div>BUTTERBALL 25C-34HZ WELL LOCATION CERTIFICATE 820' FNL &amp; 2310' FWL NENW (SURFACE) LOCATED IN SECTION 10 101' FSL &amp; 2202' FEL SWSE (HEEL) LOCATED IN SECTION 3 T2N, R67W, 6TH P.M. 2581' FSL &amp; 2209' FEL NWSE (BOTTOM) LOCATED IN SECTION 34 T3N, R67W, 6TH P.M. WELD COUNTY, COLORADO</div>				<div>DRAFTED BY:</div> <div>LMO</div>	<div>CHECKED BY:</div> <div>RKF</div>	<div>SHEET NO:</div> <div>3</div> <div>3 OF 3</div>
				<div>DATE DRAFTED:</div> <div>10/19/16</div>	<div>DATE SURVEYED:</div> <div>7/26/16</div>	
				<div>REVISED:</div>	<div>FILE NAME:</div> <div>13-90</div>	