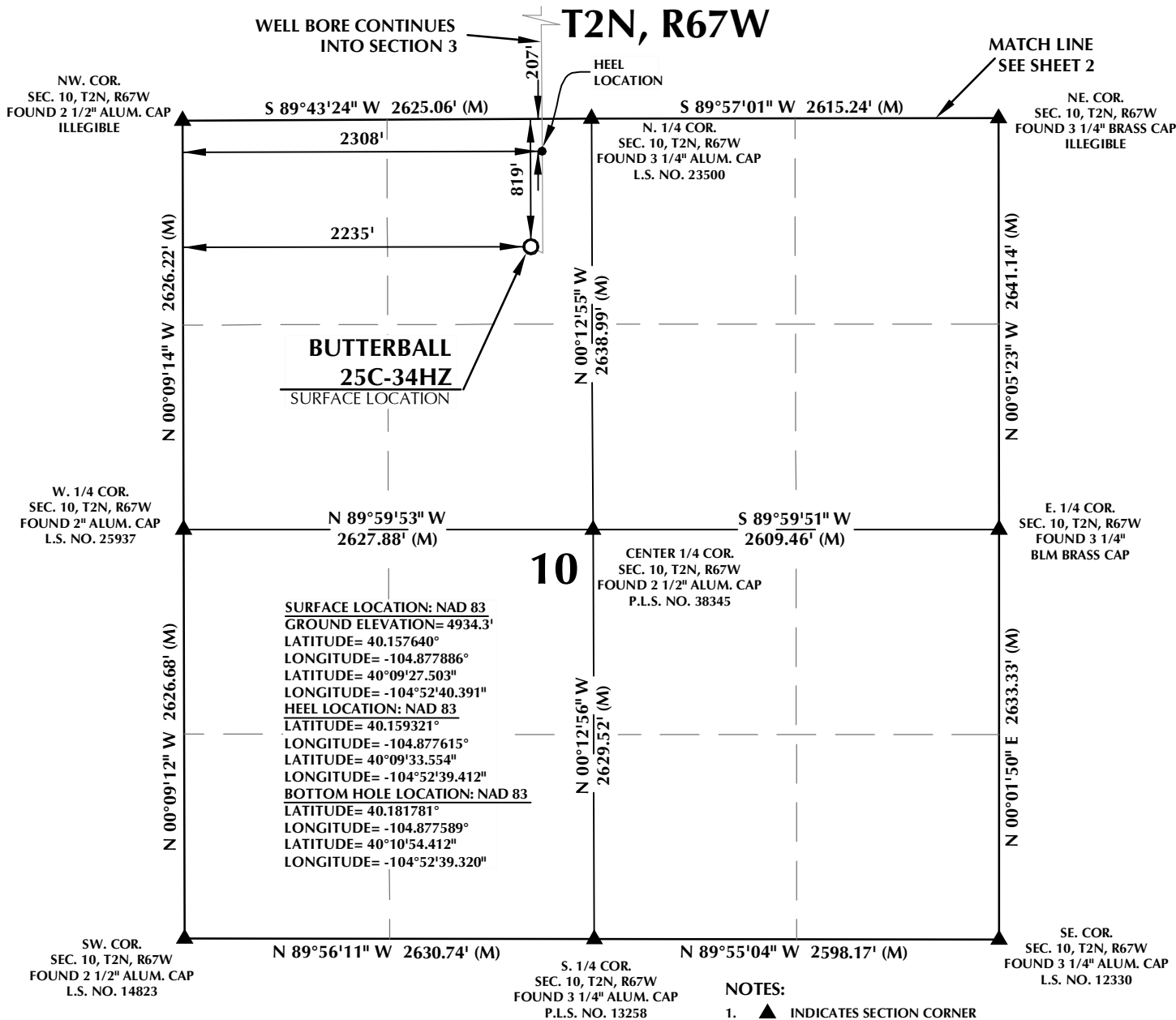


K:\LANDARKO\2013\90 COLORADO T2N, R67W, SEC. 10, EAST PLATS\BUTTERBALL 25C-34HZ.dwg, 10/20/2016 8:42:52 AM, lsa



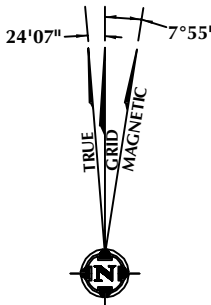
**CERTIFICATE OF SURVEYOR:**

THIS IS TO CERTIFY THAT THE ABOVE PLAT WAS PREPARED FROM FIELD NOTES OF ACTUAL SURVEY MADE BY ME OR UNDER MY SUPERVISION AND THAT THE SAME ARE TRUE AND CORRECT TO THE BEST OF MY KNOWLEDGE AND BELIEF. THIS CERTIFICATE DOES NOT REPRESENT A LAND SURVEY PLAT OR IMPROVEMENT SURVEY PLAT AS DEFINED BY CRS 38-51-102 AND CANNOT BE RELIED UPON TO DETERMINE OWNERSHIP.

*Randall K. French*  
PROFESSIONAL LAND SURVEYOR  
COLORADO REGISTRATION NUMBER 38512  
10/19/16

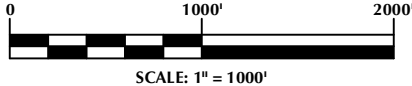
**NOTICE:**  
ACCORDING TO COLORADO STATE LAW YOU MUST COMMENCE ANY LEGAL ACTION BASED UPON ANY DEFECT IN THIS SURVEY WITHIN THREE YEARS AFTER YOU FIRST DISCOVER SUCH DEFECT. IN NO EVENT MAY ANY ACTION BASED UPON ANY DEFECT IN THIS SURVEY BE COMMENCED MORE THAN TEN YEARS FROM THE DATE ON THE CERTIFICATION SHOWN HEREON.

**NOTE:**  
MAGNETIC NORTH IS CURRENT AS OF 10/10/2016.  
MAGNETIC NORTH CHANGES WEST 0°06' PER YEAR.



**NOTES:**

- ▲ INDICATES SECTION CORNER
- ⊙ INDICATES CALCULATED CORNER
- ELEVATION BASED ON NAVD88 (GEOID12B)
- BASIS OF BEARING DERIVED FROM COLORADO COORDINATE SYSTEM OF 1983 NORTH ZONE.
- ALL MEASURED DISTANCES ARE GRID.  
COMBINED SCALE FACTOR: .99972597 CALCULATED FROM THE N. 1/4 CORNER OF SECTION 10, T2N, R67W
- OPERATOR: ROB WILSON / PDOP = 1.1
- SEE ADDENDUM TO WELL LOCATION CERTIFICATE FOR EXISTING IMPROVEMENTS WITHIN 500' OF THE WELL PAD.
- WELL FOOTAGES ARE MEASURED AT RIGHT ANGLES TO THE SECTION LINES.
- THE BOTTOM OF HOLE BEARS N00°21'08"W, 8182' FROM THE HEEL LOCATION.



**WELL PAD - BUTTERBALL 25C-34HZ**

BUTTERBALL 25C-34HZ  
WELL LOCATION CERTIFICATE  
819' FNL & 2235' FWL NENW (SURFACE)  
207' FNL & 2308' FWL NENW (HEEL)  
LOCATED IN SECTION 10  
T2N, R67W, 6TH P.M.  
2582' FSL & 2277' FWL NESW (BOTTOM)  
LOCATED IN SECTION 34  
T3N, R67W, 6TH P.M.  
WELD COUNTY, COLORADO

**Kerr-McGee Oil &  
Gas Onshore L.P.**  
**1099 18th Street  
Denver, Colorado 80202**



**CONSULTING, LLC**

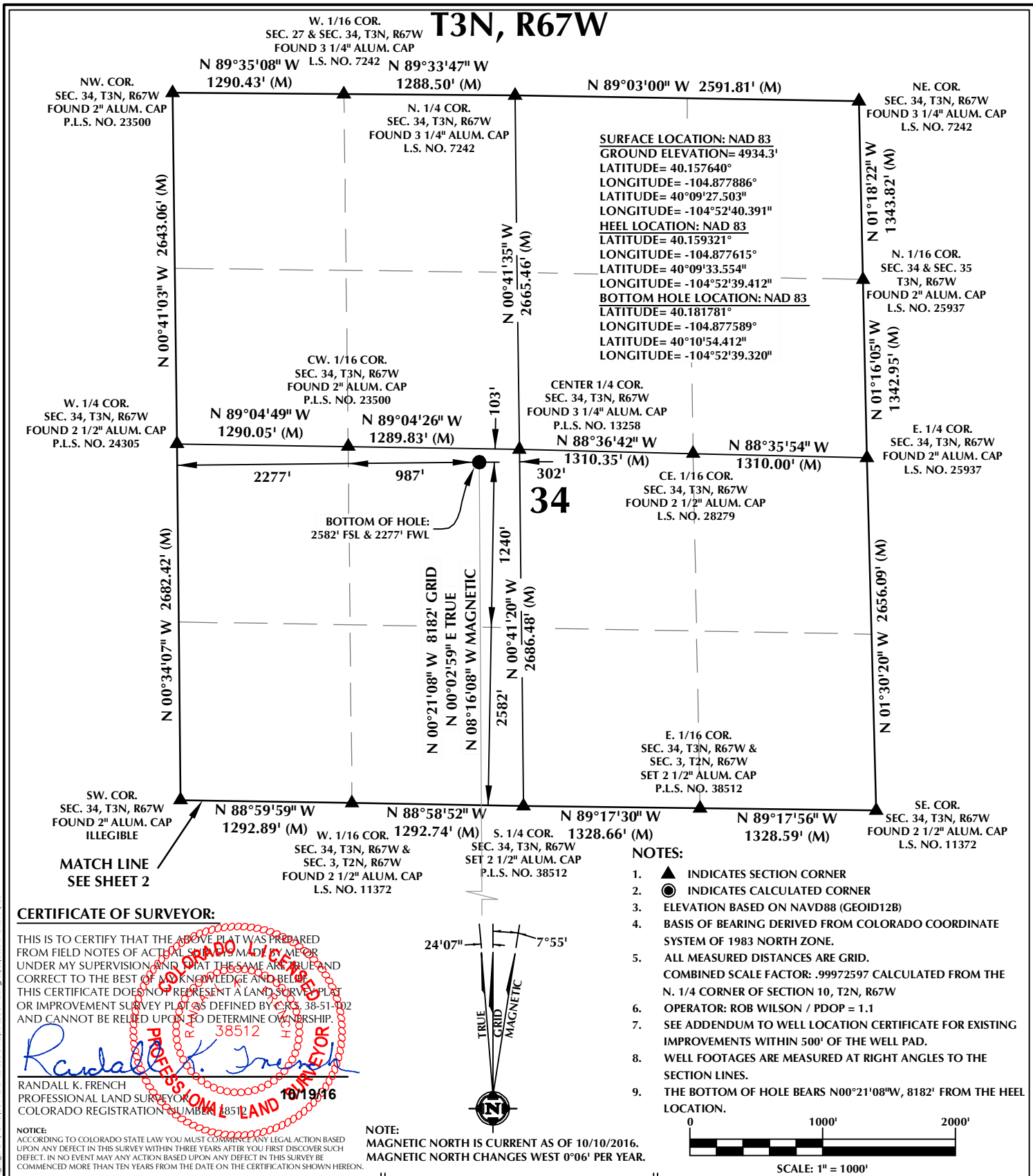
**SHERIDAN OFFICE**  
1095 Saberton Avenue  
Sheridan, Wyoming 82801  
Phone 307-674-0609

**LOVELAND OFFICE**  
1635 Foxtrail Drive, Suite 204  
Loveland, Colorado 80538  
Phone 970-776-4331

DRAFTED BY:	LMO	CHECKED BY:	RKF	SHEET NO:
DATE DRAFTED:	10/19/16	DATE SURVEYED:	7/26/16	<b>1</b>
REVISED:		FILE NAME:	13-90	1 OF 3



K:\LAND\2013\2013\_90\_COLORADO\_T2N\_R67W\_SEC\_10\_EAST\PLATS\BUTTERBALL\_25C-34HZ.dwg, 10/20/2016 8:43:02 AM, lrs



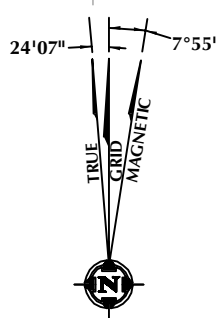
**CERTIFICATE OF SURVEYOR:**

THIS IS TO CERTIFY THAT THE ABOVE PLAT WAS PREPARED FROM FIELD NOTES OF ACTUAL SURVEY MADE BY ME OR UNDER MY SUPERVISION AND THAT THE SAME ARE TRUE AND CORRECT TO THE BEST OF MY KNOWLEDGE AND BELIEF. THIS CERTIFICATE DOES NOT REPRESENT A LAND SURVEY OR IMPROVEMENT SURVEY PLAT AS DEFINED BY C.R.S. 38-51-102 AND CANNOT BE RELIED UPON TO DETERMINE OWNERSHIP.

*Randall K. French*  
RANDALL K. FRENCH  
PROFESSIONAL LAND SURVEYOR  
COLORADO REGISTRATION NUMBER 38512

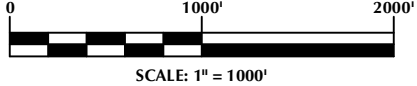
**NOTICE:**  
ACCORDING TO COLORADO STATE LAW YOU MUST COMMENCE ANY LEGAL ACTION BASED UPON ANY DEFECT IN THIS SURVEY WITHIN THREE YEARS AFTER YOU FIRST DISCOVER SUCH DEFECT. IN NO EVENT MAY ANY ACTION BASED UPON ANY DEFECT IN THIS SURVEY BE COMMENCED MORE THAN TEN YEARS FROM THE DATE ON THE CERTIFICATION SHOWN HEREON.

**NOTE:**  
MAGNETIC NORTH IS CURRENT AS OF 10/10/2016.  
MAGNETIC NORTH CHANGES WEST 0°06' PER YEAR.



**NOTES:**

1. ▲ INDICATES SECTION CORNER
2. ● INDICATES CALCULATED CORNER
3. ELEVATION BASED ON NAVD88 (GEOID12B)
4. BASIS OF BEARING DERIVED FROM COLORADO COORDINATE SYSTEM OF 1983 NORTH ZONE.
5. ALL MEASURED DISTANCES ARE GRID.
6. COMBINED SCALE FACTOR: .99972597 CALCULATED FROM THE N. 1/4 CORNER OF SECTION 10, T2N, R67W
7. OPERATOR: ROB WILSON / PDOP = 1.1
8. SEE ADDENDUM TO WELL LOCATION CERTIFICATE FOR EXISTING IMPROVEMENTS WITHIN 500' OF THE WELL PAD.
9. WELL FOOTAGES ARE MEASURED AT RIGHT ANGLES TO THE SECTION LINES.
10. THE BOTTOM OF HOLE BEARS N00°21'08\"/>



SCALE: 1" = 1000'

**WELL PAD - BUTTERBALL 25C-34HZ**

BUTTERBALL 25C-34HZ  
WELL LOCATION CERTIFICATE  
819' FNL & 2235' FWL NENW (SURFACE)  
207' FNL & 2308' FWL NENW (HEEL)  
LOCATED IN SECTION 10  
T2N, R67W, 6TH P.M.  
2582' FSL & 2277' FWL NESW (BOTTOM)  
LOCATED IN SECTION 34  
T3N, R67W, 6TH P.M.  
WELD COUNTY, COLORADO

**Kerr-McGee Oil &  
Gas Onshore L.P.**  
1099 18th Street  
Denver, Colorado 80202



**CONSULTING, LLC**

**SHERIDAN OFFICE**  
1095 Saberton Avenue  
Sheridan, Wyoming 82801  
Phone 307-674-0609

**LOVELAND OFFICE**  
1635 Foxtrail Drive, Suite 204  
Loveland, Colorado 80538  
Phone 970-776-4331

DRAFTED BY:	LMO	CHECKED BY:	RKF	SHEET NO:
DATE DRAFTED:	10/19/16	DATE SURVEYED:	7/26/16	3
REVISED:		FILE NAME:	13-90	3 OF 3