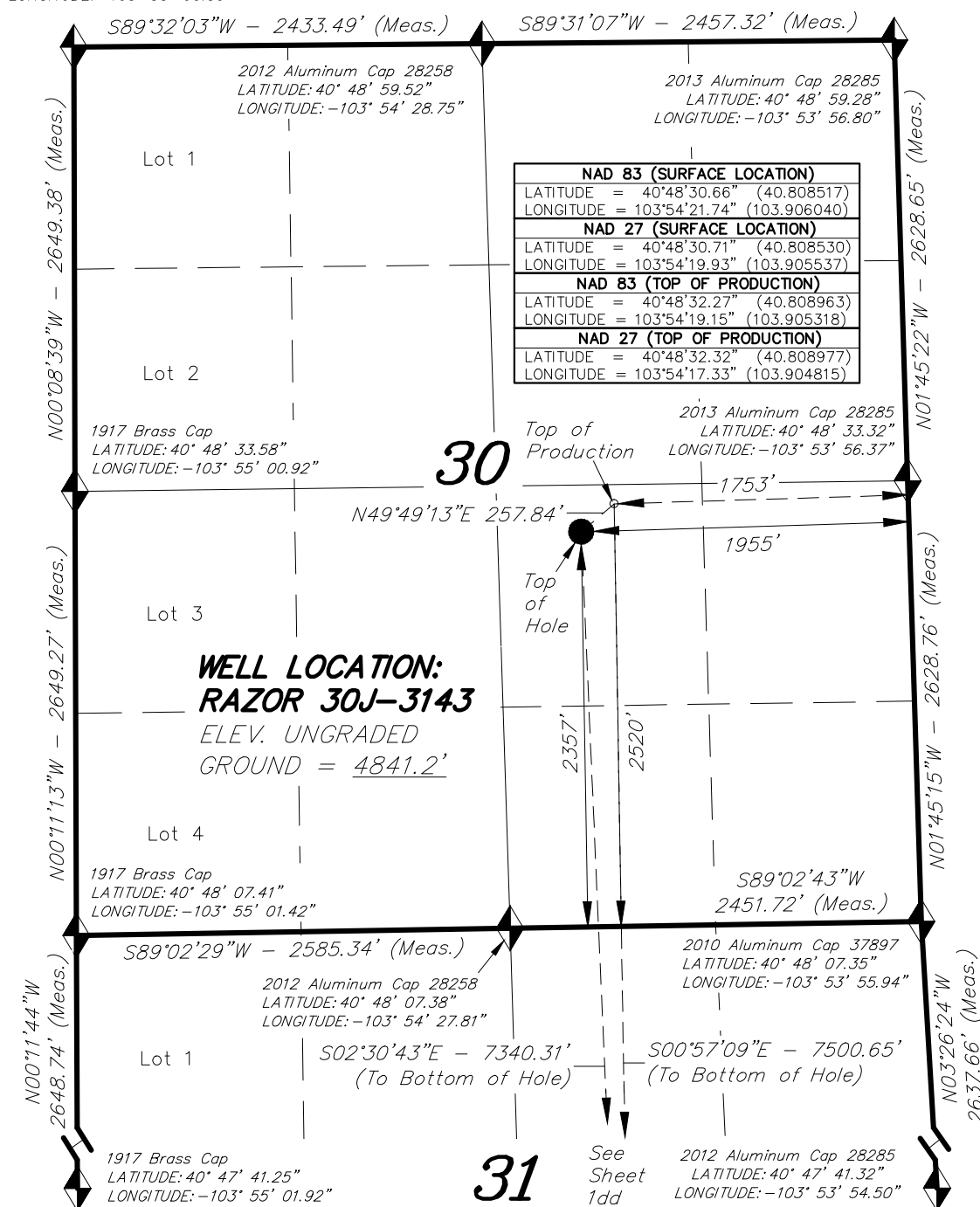


T10N, R58W, 6th P.M.

WHITING OIL & GAS CORP.



A horizontal bar scale is shown. It has a central zero point. To the left of zero, there are markings for 500 and 1000. To the right of zero, there are also markings for 500 and 1000. The scale is labeled 'BAR SCALE' below it.

 = SECTION CORNERS LOCATED

NOTES:

- NOTES:
1. Bearings are based on Global Positioning Satellite Observations.
 - 2 G.P.S. Operator: C.D. Slauch, (PDOP) = 1.8
 3. Monument Coordinates are Reported in NAD 83.

BASIS OF ELEV; Elevations are based
on an N.G.S. OPUS Correction. LOCATION:
LAT. 40°46'03.41" LONG. 103°46'26.97"
(Tristate Aluminum Ccp) NAVD 88 Elev. 4750.22'

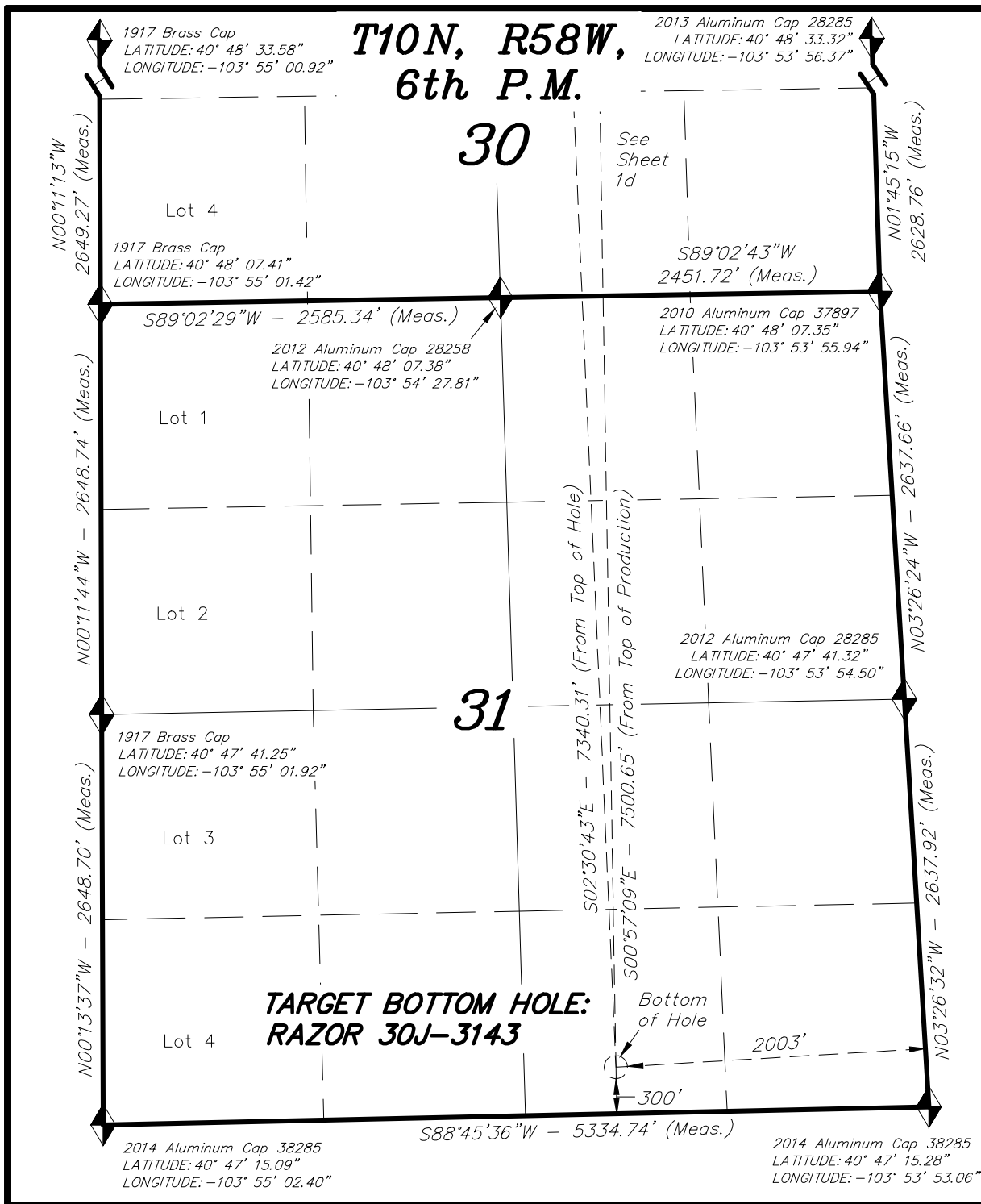
THIS IS TO CERTIFY THAT THE ABOVE PLAT WAS
PREPARED FROM FIELD NOTES AND FIELD SURVEYS
MADE BY ME OR UNDER MY SUPERVISION, THE
LOCATION HAS BEEN STAKED ON THE GROUND, AS
SHOWN ON THE PLAT, AND THAT THE SAME ARE
TRUE AND CORRECT TO THE BEST OF MY
KNOWLEDGE AND BELIEF. 08-09-16

REGISTERED LAND SURVEYOR
REGISTRATION NO. 30125
STATE OF COLORADO

TRI STATE LAND SURVEYING & CONSULTING

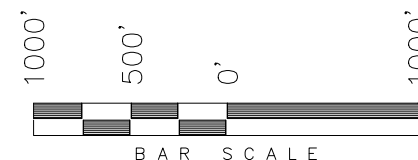
180 NORTH VERNAL AVE. – VERNAL, UTAH 84078
(435) 781-2501

| | | |
|----------------------------|---------------------|-------------------------------|
| DATE SURVEYED: 07-19-16 | SURVEYED BY: C.D.S. | SHEET 1d |
| DATE DRAWN: 08-09-16 | DRAWN BY: F.T.M. | |
| REVISED: | SCALE: 1" = 1000' | |



WHITING OIL & GAS CORP.

TARGET BOTTOM HOLE,
RAZOR 30J-3143, LOCATED AS SHOWN IN
THE SW 1/4 SE 1/4 OF SECTION 31, T10N,
R58W, 6TH P.M. WELD COUNTY, COLORADO.



◆ = SECTION CORNERS LOCATED

| NAD 83 (BOTTOM HOLE LOCATION) | |
|-------------------------------|------------------------------|
| LATITUDE | = 40°47'18.17" (40.788381) |
| LONGITUDE | = 103°54'19.28" (103.905355) |
| NAD 27 (BOTTOM HOLE LOCATION) | |
| LATITUDE | = 40°47'18.22" (40.788394) |
| LONGITUDE | = 103°54'17.47" (103.904852) |

NOTES:

- Bearings are based on Global Positioning Satellite Observations.
- Monument Coordinates are Reported in NAD 83.

THIS IS TO CERTIFY THAT THE ABOVE PLAT WAS
PREPARED FROM FIELD NOTES OF REAL SURVEYS
MADE BY ME OR UNDER MY SUPERVISION. THE
LOCATION HAS BEEN STAKED ON THE GROUND AS
SHOWN ON THE PLAT, AND THAT THE SAME ARE
TRUE AND CORRECT TO THE BEST OF MY
KNOWLEDGE AND BELIEF.

08-09-16
30125
REGISTERED LAND SURVEYOR
REGISTRATION NO. 30125
STATE OF COLORADO

TRI STATE LAND SURVEYING & CONSULTING

180 NORTH VERNAL AVE. - VERNAL, UTAH 84078
(435) 781-2501

| | | |
|----------------------------|---------------------|------------------|
| DATE SURVEYED: 07-19-16 | SURVEYED BY: C.D.S. | SHEET 1dd |
| DATE DRAWN: 08-09-16 | DRAWN BY: F.T.M. | |
| REVISED: | SCALE: 1" = 1000' | |