



**photo 1:** Facing north toward the beginning of the access road.



**photo 2:** Facing north along the access road.





**photo 3:** Facing northeast at the second gate along the access road.



**photo 4:** Facing east along the access road.





**photo 5:** Facing east along the access road toward the location.



**photo 6:** Facing east toward the location.





**photo 7:** The sediment trap at the northeast side of the location is filled in with sediment. Diversion ditch indicated by the red arrow directs stormwater from the access road to this sediment trap.

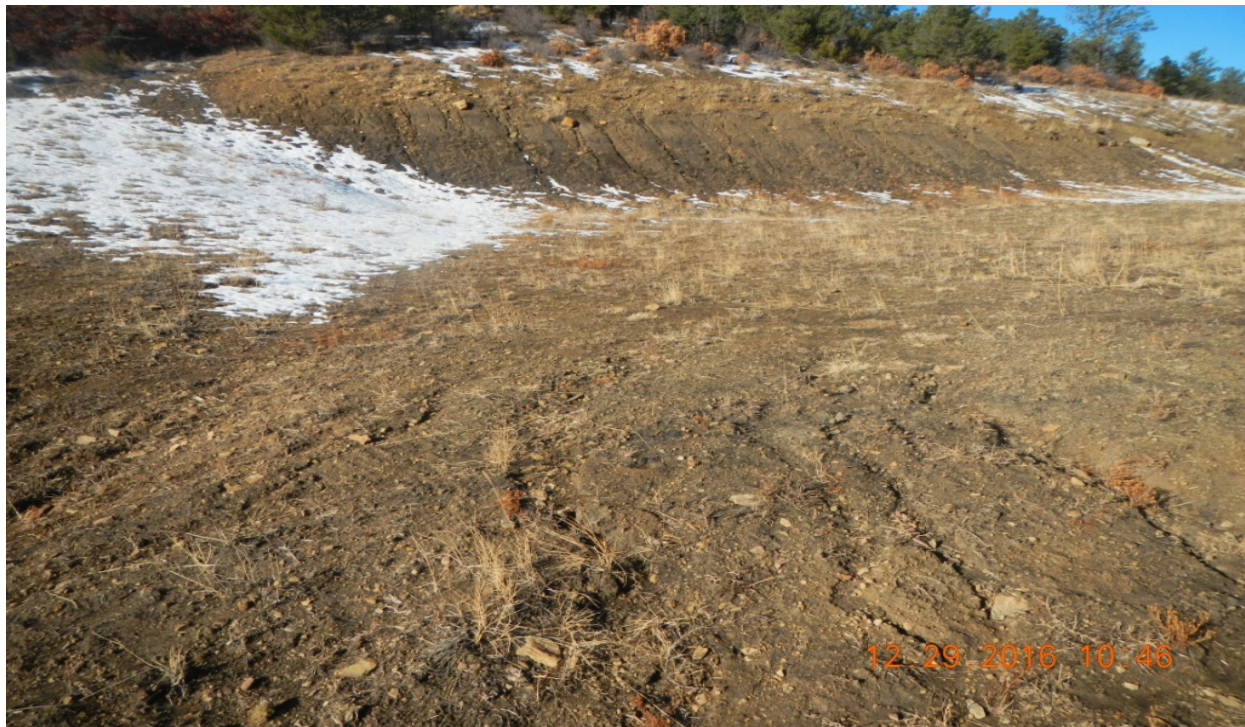


**photo 8:** Facing south toward the location along the fill slope. Desirable vegetation does not appear to be established along the fill slope.





**photo 9:** The sediment trap at the southeast corner is filled in with sediment.



**photo 10:** South side of the location facing west toward the cut slope.





**photo 11:** There are signs of erosion along the west cut slope.



**photo 12:** South side of the location facing north.