



December 7, 2016

Mr. Matt Lepore, Director
Colorado Oil and Gas Conservation Commission
1120 Lincoln Street, Suite 801
Denver, CO 80203

RE: COGCC Rule 318A.e.: Proposed Wellbore Spacing Unit

Goetzel 32N-30B-M
6N-66W Section 29: S/2NW/4, SW/4NE/4, N/2SW/4, NW/4SE/4
6N-66W Section 30: S/2N/2, N/2S/2
600.57 Acres

Dear Mr. Lepore,

Synergy Resources Corporation (Synergy) is planning to drill the above referenced well in accordance with the provisions set out in COGCC Rule 318A.e. Synergy's proposed wellbore spacing unit consists of:

Goetzel 32N-30B-M
6N-66W Section 29: S/2NW/4, SW/4NE/4, N/2SW/4, NW/4SE/4
6N-66W Section 30: S/2N/2, N/2S/2
600.57 Acres

Synergy is not the only owner within the proposed wellbore spacing unit and hereby certifies to the Director that a thirty day (30-day) notice has been given by certified mail to all owners in the proposed wellbore spacing unit, as required by COGCC Rule 318A.e. (6). Copies of the required notification letters are on file at Synergy's office. The required thirty (30) day notice period has elapsed absent the receipt by Synergy of any objection to their proposal by the owner(s) within the proposed spacing unit for the subject well. We have not received any objections to such well location or proposed spacing unit, therefore, Synergy Resources hereby requests the Director to approve the well.

Enclosed is the Proposed Spacing Unit Plat to assist in your review and approval of Synergy's proposed Application for Permit to Drill (APD) for Goetzel 32N-30B-M well. Synergy respectfully requests the COGCC to review the enclosed information and approve the exception location waiver request per Surface Use Agreement and APD for Goetzel 32N-30B-M.

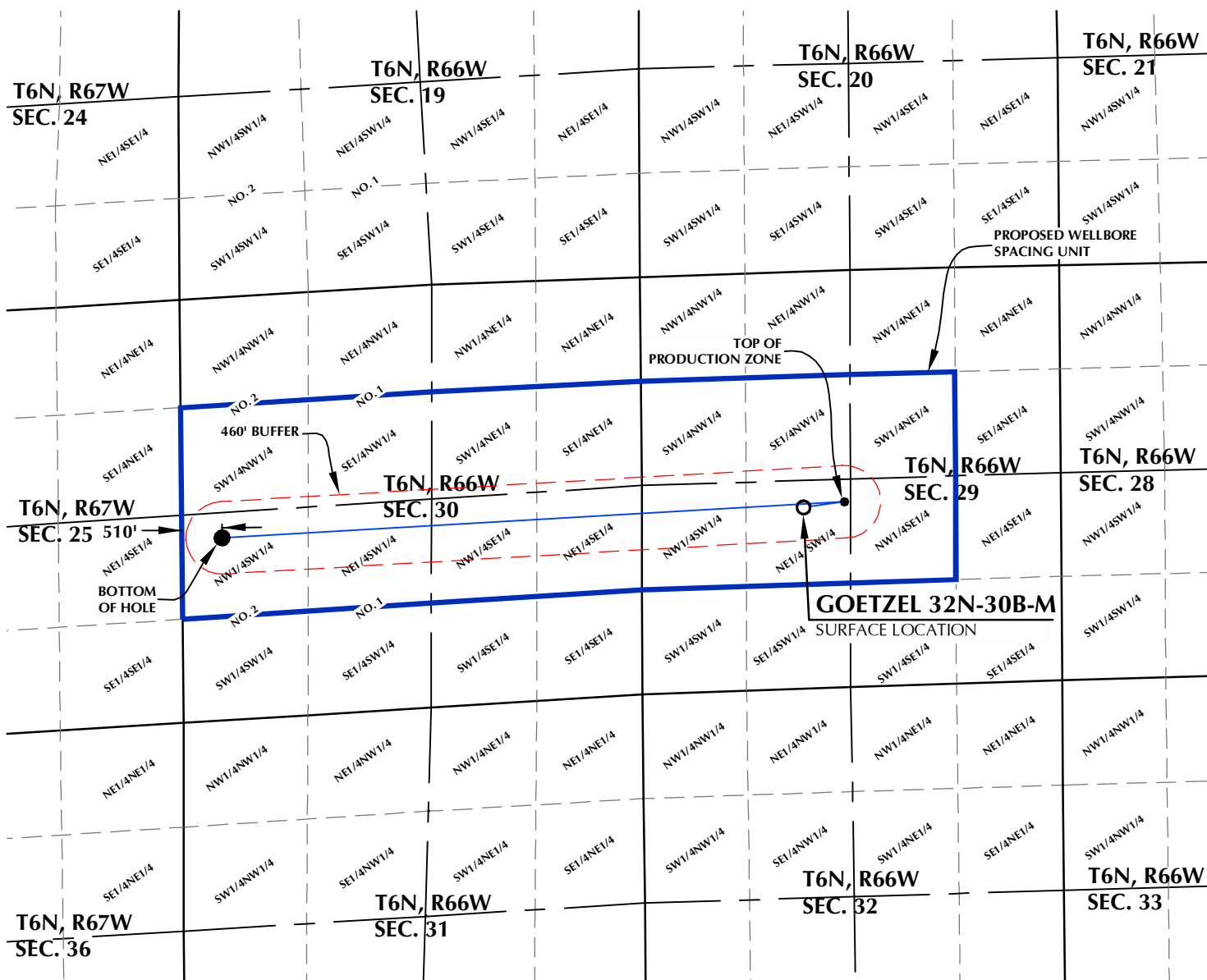
Thank you,

Erin Ekblad

Erin Ekblad
Manager of Regulatory Affairs
Synergy Resources Corporation

Attachment: Proposed Spacing Unit Plat

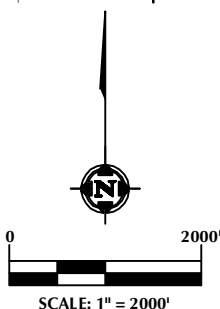
GOETZEL 32N-30B-M WELLBORE SPACING UNIT



SURFACE LOCATION
GROUND ELEVATION= 4734.8'
LATITUDE= 40.458037°
LONGITUDE= -104.804135°
1/4 1/4: NE1/4 SW1/4

TOP OF PRODUCTION
LATITUDE= 40.458229°
LONGITUDE= -104.802267°
1/4 1/4: NE1/4 SW1/4

BOTTOM HOLE LOCATION
LATITUDE= 40.457142°
LONGITUDE= -104.830657°
1/4 1/4: NW1/4 SW1/4



**DISTANCE FROM COMPLETED
PORTION OF WELLBORE TO
NEAREST UNIT BOUNDARY= 510'**
NOTES:

1. DRAWING LATITUDE AND LONGITUDE COORDINATES ARE NAD 83 (2011)(EPOCH:2010)
2. ELEVATION BASED ON NAVD88 (GEOID12B)
3. BASIS OF BEARING DERIVED FROM COLORADO COORDINATE SYSTEM OF 1983 NORTH ZONE.
ALL MEASURED DISTANCES ARE GRID.
COMBINED SCALE FACTOR: .99974048 CALCULATED FROM THE W. 1/4 CORNER OF SECTION 29
4. NO. 1 & NO. 2 AS SHOWN HEREON ARE GOVERNMENT LOTS 1 & 2 PER THE ORIGINAL GLO SURVEY

WELL PAD - GOETZEL 25-29

GOETZEL 32N-30B-M
WELLBORE SPACING UNIT
2297' FSL & 2053' FWL NESW (SURFACE)
2353' FSL & 2573' FWL NESW (TOP OF PRODUCTION)
LOCATED IN SECTION 29
2314' FSL & 510' FWL LOT 2 (NWSW) (BOTTOM)
LOCATED IN SECTION 30
T6N, R66W, 6TH P.M.
WELD COUNTY, COLORADO

SYNERGY
RESOURCES CORPORATION
1625 Broadway, Suite 300
Denver, Colorado 80202



CONSULTING, LLC

SHERIDAN OFFICE
1095 Saberton Avenue
Sheridan, Wyoming 82801
Phone 307-674-0609

LOVELAND OFFICE
1635 Foxtrail Drive, Suite 204
Loveland, Colorado 80538
Phone 970-776-4331

DRAFTED BY:	LMO	CHECKED BY:	JRS
DATE DRAFTED:	9/20/16	DATE SURVEYED:	9/8/16
REVISED:	12/1/16	FILE NAME:	16-81