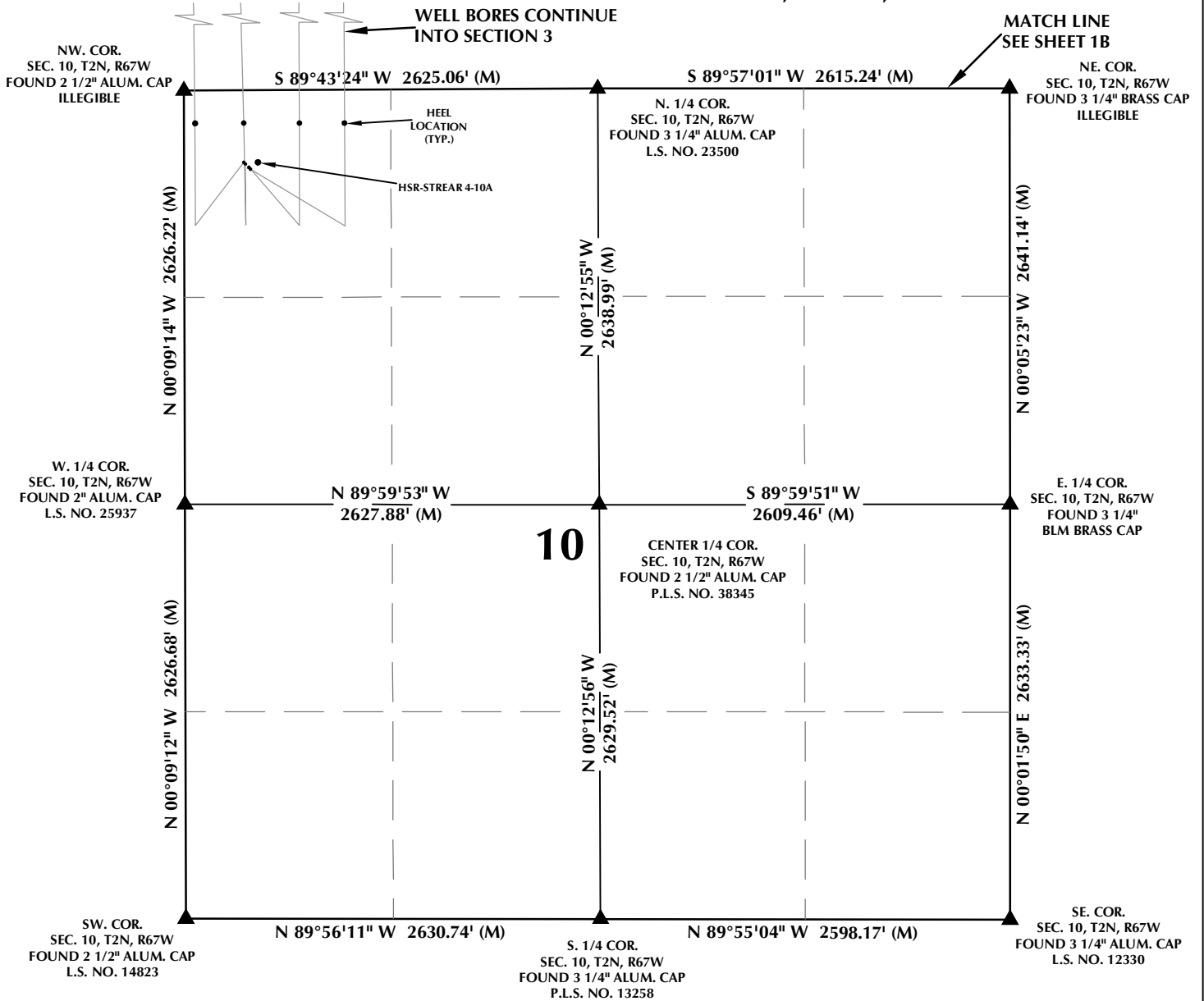


MULTI-WELL PLAN SECTION 10, T2N, R67W



WELL NOTES:

BUTTERBALL 40N-33HZ

SURFACE: 456' FNL, 378' FWL, SECTION 10, T2N, R67W
BOTTOM HOLE: 2579' FSL, 26' FEL, SECTION 33, T3N, R67W

BUTTERBALL 32C-34HZ

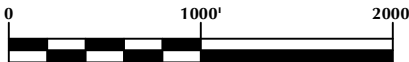
SURFACE: 466' FNL, 389' FWL, SECTION 10, T2N, R67W
BOTTOM HOLE: 2577' FSL, 189' FWL, SECTION 34, T3N, R67W

BUTTERBALL 12N-34HZ

SURFACE: 488' FNL, 410' FWL, SECTION 10, T2N, R67W
BOTTOM HOLE: 2582' FSL, 711' FWL, SECTION 34, T3N, R67W

BUTTERBALL 22N-34HZ

SURFACE: 498' FNL, 420' FWL, SECTION 10, T2N, R67W
BOTTOM HOLE: 2581' FSL, 985' FWL, SECTION 34, T3N, R67W



SCALE: 1" = 1000'

NOTES:

- ▲ INDICATES SECTION CORNER
- INDICATES CALCULATED CORNER
- BASIS OF BEARING DERIVED FROM COLORADO COORDINATE SYSTEM OF 1983 NORTH ZONE.
- ALL MEASURED DISTANCES ARE GRID.
- COMBINED SCALE FACTOR: .99972597 CALCULATED FROM THE N. 1/4 CORNER OF SECTION 10, T2N, R67W
- WELL FOOTAGES ARE MEASURED AT RIGHT ANGLES TO THE SECTION LINES.

WELL PAD - BUTTERBALL 32C-34HZ

MULTI-WELL PLAN
BUTTERBALL 40N-33HZ, BUTTERBALL 32C-34HZ,
BUTTERBALL 12N-34HZ & BUTTERBALL 22N-34HZ
LOCATED IN SECTIONS 3, 4 & 10
T2N, R67W, 6TH P.M.
LOCATED IN SECTIONS 33 & 34
T3N, R67W, 6TH P.M.
WELD COUNTY, COLORADO

**Kerr-McGee Oil &
Gas Onshore L.P.**
1099 18th Street
Denver, Colorado 80202



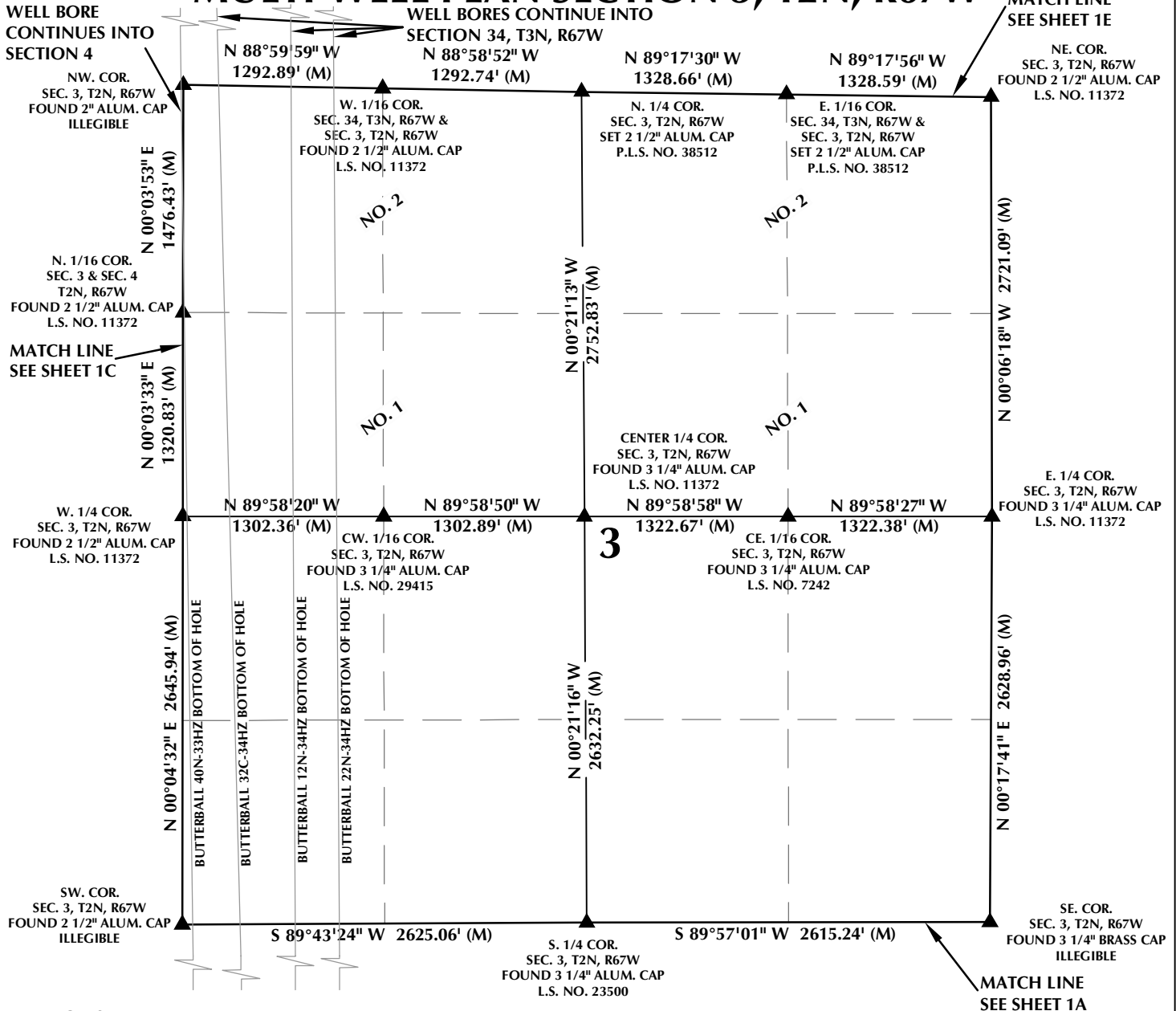
CONSULTING, LLC

SHERIDAN OFFICE
1095 Saberton Avenue
Sheridan, Wyoming 82801
Phone 307-674-0609

LOVELAND OFFICE
1635 Foxtrail Drive, Suite 204
Loveland, Colorado 80538
Phone 970-776-4331

DRAFTED BY:	LMO	CHECKED BY:	RKF	SHEET NO:
DATE DRAFTED:	10/18/16	DATE SURVEYED:	1/26/16	1A
REVISED:	10/26/16	FILE NAME:	13-90	1A OF 1

MULTI-WELL PLAN SECTION 3, T2N, R67W



WELL NOTES:

BUTTERBALL 40N-33HZ

SURFACE: 456' FNL, 378' FWL, SECTION 10, T2N, R67W
BOTTOM HOLE: 2579' FSL, 26' FEL, SECTION 33, T3N, R67W

BUTTERBALL 32C-34HZ

SURFACE: 466' FNL, 389' FWL, SECTION 10, T2N, R67W
BOTTOM HOLE: 2577' FSL, 189' FWL, SECTION 34, T3N, R67W

BUTTERBALL 12N-34HZ

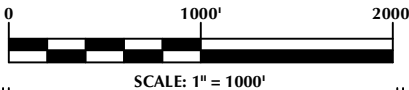
SURFACE: 488' FNL, 410' FWL, SECTION 10, T2N, R67W
BOTTOM HOLE: 2582' FSL, 711' FWL, SECTION 34, T3N, R67W

BUTTERBALL 22N-34HZ

SURFACE: 498' FNL, 420' FWL, SECTION 10, T2N, R67W
BOTTOM HOLE: 2581' FSL, 985' FWL, SECTION 34, T3N, R67W

NOTES:

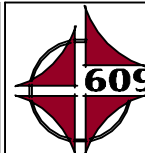
- ▲ INDICATES SECTION CORNER
- INDICATES CALCULATED CORNER
- BASIS OF BEARING DERIVED FROM COLORADO COORDINATE SYSTEM OF 1983 NORTH ZONE.
- ALL MEASURED DISTANCES ARE GRID.
- COMBINED SCALE FACTOR: .99972597 CALCULATED FROM THE N. 1/4 CORNER OF SECTION 10, T2N, R67W
- WELL FOOTAGES ARE MEASURED AT RIGHT ANGLES TO THE SECTION LINES.
- NO. 1 & NO. 2 AS SHOWN HEREON ARE GOVERNMENT LOTS 1 & 2 PER THE ORIGINAL GLO SURVEY



WELL PAD - BUTTERBALL 32C-34HZ

MULTI-WELL PLAN
BUTTERBALL 40N-33HZ, BUTTERBALL 32C-34HZ,
BUTTERBALL 12N-34HZ & BUTTERBALL 22N-34HZ
LOCATED IN SECTIONS 3, 4 & 10
T2N, R67W, 6TH P.M.
LOCATED IN SECTIONS 33 & 34
T3N, R67W, 6TH P.M.
WELD COUNTY, COLORADO

**Kerr-McGee Oil &
Gas Onshore L.P.**
1099 18th Street
Denver, Colorado 80202



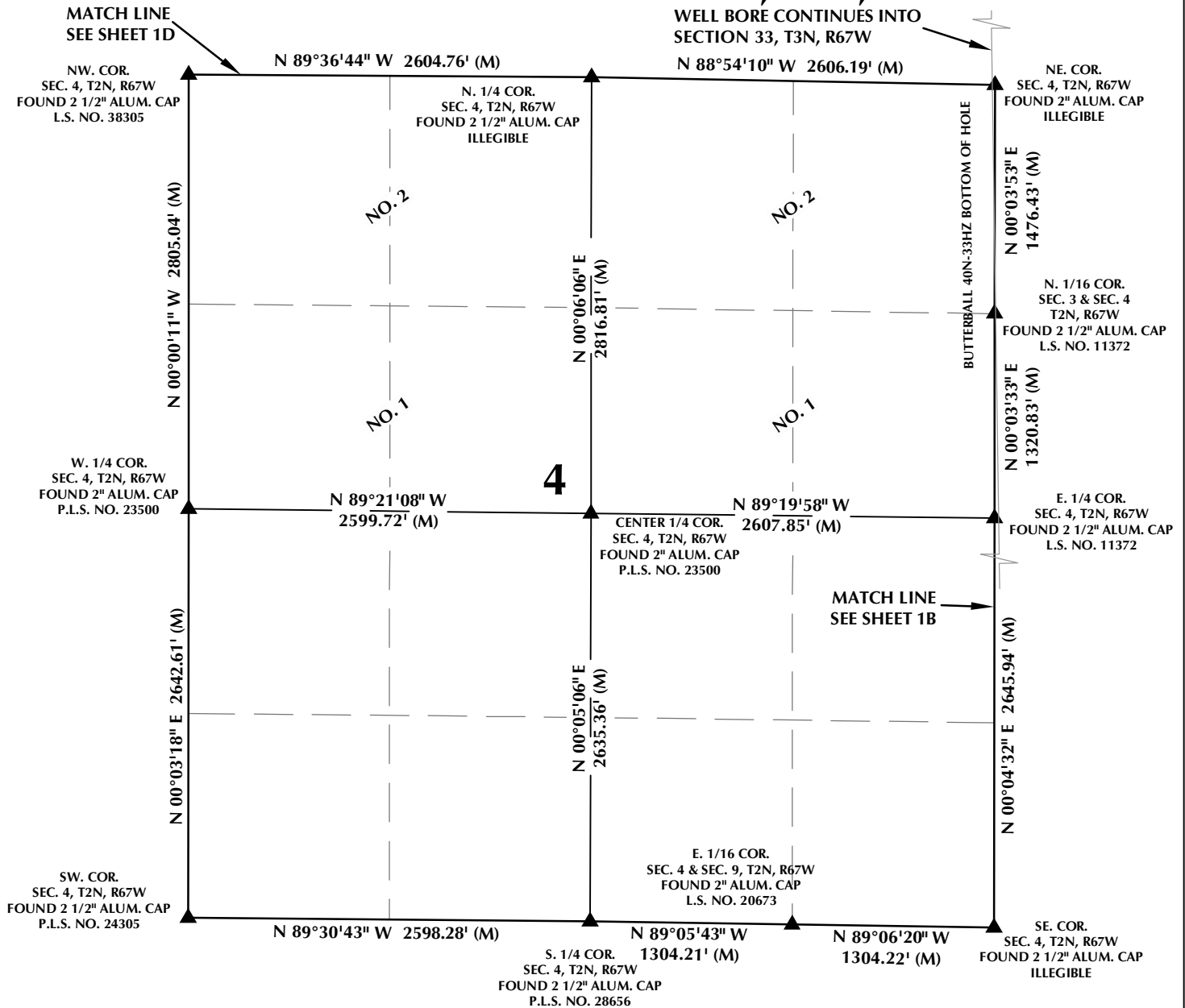
CONSULTING, LLC

SHERIDAN OFFICE
1095 Saberton Avenue
Sheridan, Wyoming 82801
Phone 307-674-0609

LOVELAND OFFICE
1635 Foxtrail Drive, Suite 204
Loveland, Colorado 80538
Phone 970-776-4331

DRAFTED BY:	LMO	CHECKED BY:	RKF	SHEET NO:
DATE DRAFTED:	10/18/16	DATE SURVEYED:	1/26/16	1B
REVISED:		FILE NAME:	13-90	1B OF 1

MULTI-WELL PLAN SECTION 4, T2N, R67W



WELL NOTES:

BUTTERBALL 40N-33HZ

SURFACE: 456' FNL, 378' FWL, SECTION 10, T2N, R67W
BOTTOM HOLE: 2579' FSL, 26' FEL, SECTION 33, T3N, R67W

BUTTERBALL 32C-34HZ

SURFACE: 466' FNL, 389' FWL, SECTION 10, T2N, R67W
BOTTOM HOLE: 2577' FSL, 189' FWL, SECTION 34, T3N, R67W

BUTTERBALL 12N-34HZ

SURFACE: 488' FNL, 410' FWL, SECTION 10, T2N, R67W
BOTTOM HOLE: 2582' FSL, 711' FWL, SECTION 34, T3N, R67W

BUTTERBALL 22N-34HZ

SURFACE: 498' FNL, 420' FWL, SECTION 10, T2N, R67W
BOTTOM HOLE: 2581' FSL, 985' FWL, SECTION 34, T3N, R67W

NOTES:

1. ▲ INDICATES SECTION CORNER
2. ● INDICATES CALCULATED CORNER
3. BASIS OF BEARING DERIVED FROM COLORADO COORDINATE SYSTEM OF 1983 NORTH ZONE.
4. ALL MEASURED DISTANCES ARE GRID.
COMBINED SCALE FACTOR: .99972597 CALCULATED FROM THE N. 1/4 CORNER OF SECTION 10, T2N, R67W
5. WELL FOOTAGES ARE MEASURED AT RIGHT ANGLES TO THE SECTION LINES.
6. NO. 1 & NO. 2 AS SHOWN HEREON ARE GOVERNMENT LOTS 1 & 2 PER THE ORIGINAL GLO SURVEY

WELL PAD - BUTTERBALL 32C-34HZ

MULTI-WELL PLAN
BUTTERBALL 40N-33HZ, BUTTERBALL 32C-34HZ,
BUTTERBALL 12N-34HZ & BUTTERBALL 22N-34HZ
LOCATED IN SECTIONS 3, 4 & 10
T2N, R67W, 6TH P.M.
LOCATED IN SECTIONS 33 & 34
T3N, R67W, 6TH P.M.
WELD COUNTY, COLORADO

**Kerr-McGee Oil &
Gas Onshore L.P.**
1099 18th Street
Denver, Colorado 80202



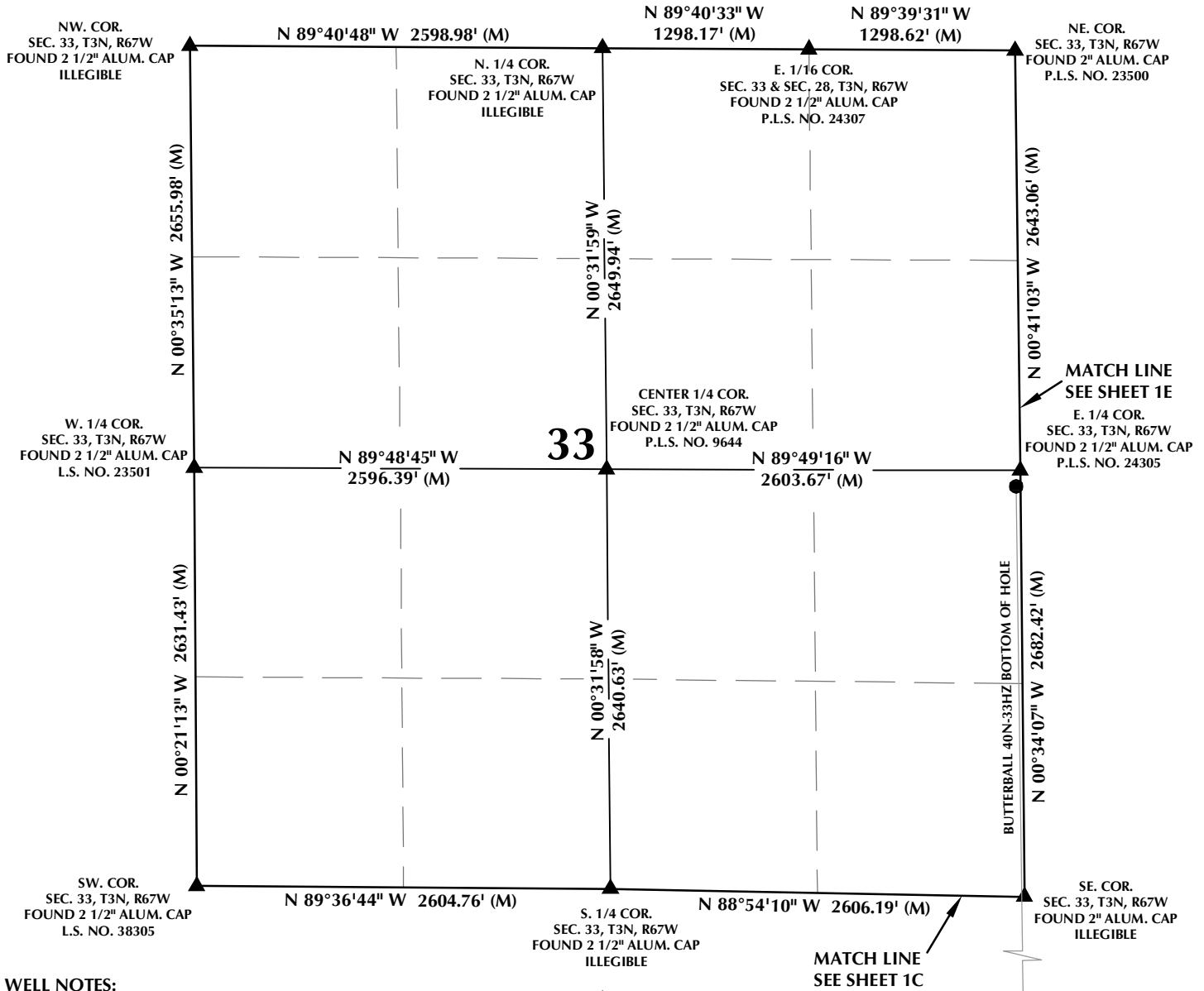
CONSULTING, LLC

SHERIDAN OFFICE
1095 Saberton Avenue
Sheridan, Wyoming 82801
Phone 307-674-0609

LOVELAND OFFICE
1635 Foxtrail Drive, Suite 204
Loveland, Colorado 80538
Phone 970-776-4331

DRAFTED BY:	LMO	CHECKED BY:	RKF	SHEET NO:
DATE DRAFTED:	10/18/16	DATE SURVEYED:	1/26/16	1C
REVISED:		FILE NAME:	13-90	1C OF 1

MULTI-WELL PLAN SECTION 33, T3N, R67W



WELL NOTES:

BUTTERBALL 40N-33HZ

SURFACE: 456' FNL, 378' FWL, SECTION 10, T2N, R67W
BOTTOM HOLE: 2579' FSL, 26' FEL, SECTION 33, T3N, R67W

BUTTERBALL 32C-34HZ

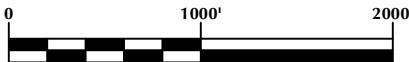
SURFACE: 466' FNL, 389' FWL, SECTION 10, T2N, R67W
BOTTOM HOLE: 2577' FSL, 189' FWL, SECTION 34, T3N, R67W

BUTTERBALL 12N-34HZ

SURFACE: 488' FNL, 410' FWL, SECTION 10, T2N, R67W
BOTTOM HOLE: 2582' FSL, 711' FWL, SECTION 34, T3N, R67W

BUTTERBALL 22N-34HZ

SURFACE: 498' FNL, 420' FWL, SECTION 10, T2N, R67W
BOTTOM HOLE: 2581' FSL, 985' FWL, SECTION 34, T3N, R67W



SCALE: 1" = 1000'

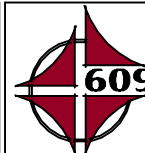
NOTES:

- ▲ INDICATES SECTION CORNER
- INDICATES CALCULATED CORNER
- BASIS OF BEARING DERIVED FROM COLORADO COORDINATE SYSTEM OF 1983 NORTH ZONE. ALL MEASURED DISTANCES ARE GRID.
- COMBINED SCALE FACTOR: .99972597 CALCULATED FROM THE N. 1/4 CORNER OF SECTION 10, T2N, R67W
- WELL FOOTAGES ARE MEASURED AT RIGHT ANGLES TO THE SECTION LINES.

WELL PAD - BUTTERBALL 32C-34HZ

MULTI-WELL PLAN
BUTTERBALL 40N-33HZ, BUTTERBALL 32C-34HZ,
BUTTERBALL 12N-34HZ & BUTTERBALL 22N-34HZ
LOCATED IN SECTIONS 3, 4 & 10
T2N, R67W, 6TH P.M.
LOCATED IN SECTIONS 33 & 34
T3N, R67W, 6TH P.M.
WELD COUNTY, COLORADO

**Kerr-McGee Oil &
Gas Onshore L.P.**
1099 18th Street
Denver, Colorado 80202



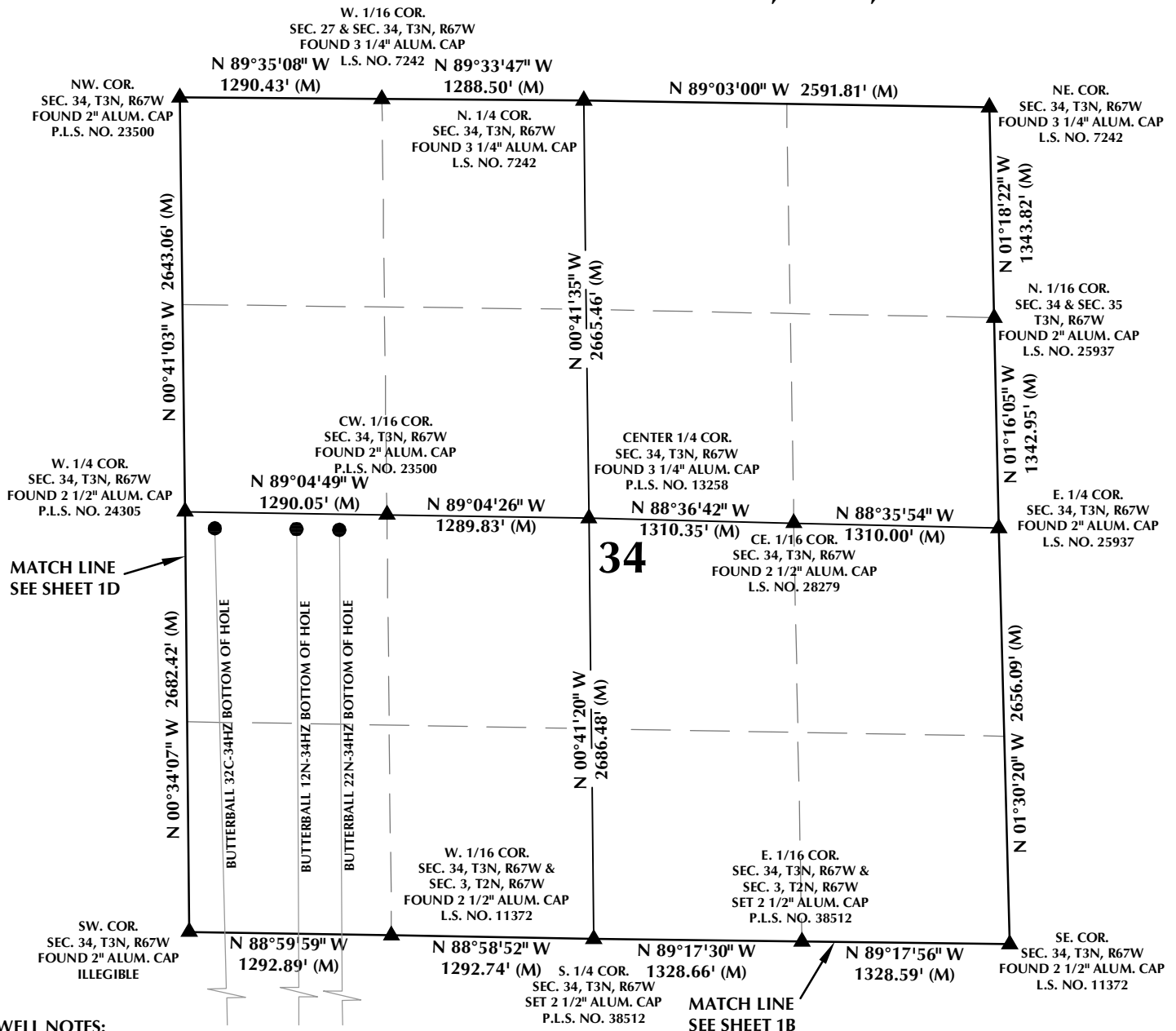
CONSULTING, LLC

SHERIDAN OFFICE
1095 Saberton Avenue
Sheridan, Wyoming 82801
Phone 307-674-0609

LOVELAND OFFICE
1635 Foxtrail Drive, Suite 204
Loveland, Colorado 80538
Phone 970-776-4331

DRAFTED BY:	LMO	CHECKED BY:	RKF	SHEET NO:
DATE DRAFTED:	10/18/16	DATE SURVEYED:	1/26/16	1D
REVISED:		FILE NAME:	13-90	1D OF 1

MULTI-WELL PLAN SECTION 34, T3N, R67W



WELL NOTES:

BUTTERBALL 40N-33HZ

SURFACE: 456' FNL, 378' FWL, SECTION 10, T2N, R67W
BOTTOM HOLE: 2579' FSL, 26' FEL, SECTION 33, T3N, R67W

BUTTERBALL 32C-34HZ

SURFACE: 466' FNL, 389' FWL, SECTION 10, T2N, R67W
BOTTOM HOLE: 2577' FSL, 189' FWL, SECTION 34, T3N, R67W

BUTTERBALL 12N-34HZ

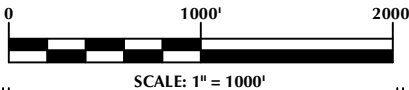
SURFACE: 488' FNL, 410' FWL, SECTION 10, T2N, R67W
BOTTOM HOLE: 2582' FSL, 711' FWL, SECTION 34, T3N, R67W

BUTTERBALL 22N-34HZ

SURFACE: 498' FNL, 420' FWL, SECTION 10, T2N, R67W
BOTTOM HOLE: 2581' FSL, 985' FWL, SECTION 34, T3N, R67W

NOTES:

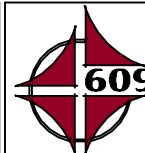
- ▲ INDICATES SECTION CORNER
- INDICATES CALCULATED CORNER
- BASIS OF BEARING DERIVED FROM COLORADO COORDINATE SYSTEM OF 1983 NORTH ZONE.
- ALL MEASURED DISTANCES ARE GRID.
- COMBINED SCALE FACTOR: .99972597 CALCULATED FROM THE N. 1/4 CORNER OF SECTION 10, T2N, R67W
- WELL FOOTAGES ARE MEASURED AT RIGHT ANGLES TO THE SECTION LINES.



WELL PAD - BUTTERBALL 32C-34HZ

MULTI-WELL PLAN
BUTTERBALL 40N-33HZ, BUTTERBALL 32C-34HZ,
BUTTERBALL 12N-34HZ & BUTTERBALL 22N-34HZ
LOCATED IN SECTIONS 3, 4 & 10
T2N, R67W, 6TH P.M.
LOCATED IN SECTIONS 33 & 34
T3N, R67W, 6TH P.M.
WELD COUNTY, COLORADO

**Kerr-McGee Oil &
Gas Onshore L.P.**
1099 18th Street
Denver, Colorado 80202



CONSULTING, LLC

SHERIDAN OFFICE
1095 Saberton Avenue
Sheridan, Wyoming 82801
Phone 307-674-0609

LOVELAND OFFICE
1635 Foxtrail Drive, Suite 204
Loveland, Colorado 80538
Phone 970-776-4331

DRAFTED BY:	LMO	CHECKED BY:	RKF	SHEET NO:
DATE DRAFTED:	10/18/16	DATE SURVEYED:	1/26/16	1E
REVISED:		FILE NAME:	13-90	1E OF 1