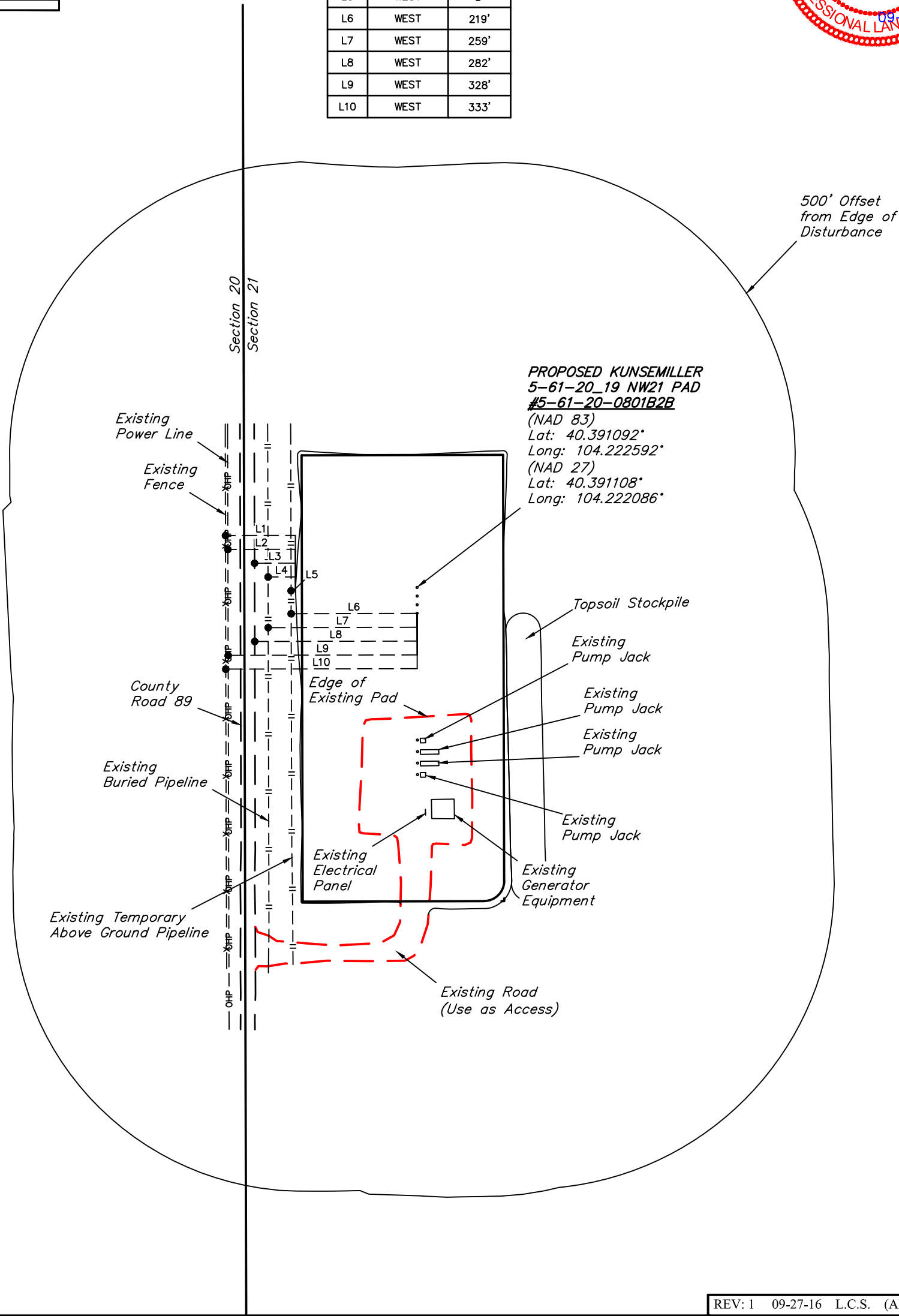


LINE TABLE		
LINE	DIRECTION	LENGTH
L1	WEST	121'
L2	WEST	117'
L3	WEST	71'
L4	WEST	48'
L5	WEST	8'
L6	WEST	219'
L7	WEST	259'
L8	WEST	282'
L9	WEST	328'
L10	WEST	333'



REV: 1 09-27-16 L.C.S. (ADD PUMP JACKS)

PLANT COMMUNITY

- ☐ DISTURBED GRASSLAND
- ☒ NATIVE GRASSLAND
- ☐ SHRUB LAND
- ☐ PLAINS RIPARIAN
- ☐ MOUNTAIN RIPARIAN
- ☐ FOREST LAND
- ☐ WETLANDS AQUATIC
- ☐ ALPINE
- ☐ OTHER (Describe):

CURRENT LAND USE

- CROP LAND:

NON-CROP LAND:

SUBDIVIDED:
- ☐ IRRIGATED

☒ RANGELAND

☐ INDUSTRIAL
- ☐ DRY LAND

☐ TIMBER

☐ COMMERCIAL
- ☐ IMPROVED PASTURE

☐ RECREATIONAL

☐ RESIDENTIAL
- ☐ HAY MEADOW

☐ OTHER (Describe)
- ☐ CRP

FUTURE LAND USE

- CROP LAND:

NON-CROP LAND:

SUBDIVIDED:
- ☐ IRRIGATED

☒ RANGELAND

☐ INDUSTRIAL
- ☐ DRY LAND

☐ TIMBER

☐ COMMERCIAL
- ☐ IMPROVED PASTURE

☐ RECREATIONAL

☐ RESIDENTIAL
- ☐ HAY MEADOW

☐ OTHER (Describe)
- ☐ CRP

BILL BARRETT COPORATION

KUNSEMILLER 5-61-20 19 NW21 PAD
NW 1/4 NW 1/4, SECTION 21, T5N, R61W, 6th P.M.
WELD COUNTY, COLORADO



UELS, LLC
Corporate Office * 85 South 200 East
Vernal, UT 84078 * (435) 789-1017

SURVEYED BY: CHAD MEIERS, C.M.	SURVEY DATE: 10-27-15
DRAWN BY: C.C.	DATE DRAWN: 11-04-15
SCALE: 1" = 200'	

LOCATION DRAWING

FIGURE #4