

EXTRACTION OIL & GAS

WELD COUNTY, COLORADO (NAD 83)

SW SE SEC 36 T6N R66W 6th P.M.

CS-SCOTT C4-1-13

ORIGINAL WELLBORE

29 November, 2016

Plan: PROPOSAL #3





Project: WELD COUNTY, COLORADO (NAD 83)
Site: SW SE SEC 36 T6N R66W 6th P.M.
Well: CS-SCOTT C4-1-13
Wellbore: ORIGINAL WELLBORE
Design: PROPOSAL #3

ANNOTATIONS									
TVD	MD	Inc	Azi	+N/-S	+E/-W	VSec	Dep	Annotation	
1000.0	1000.0	0.00	0.00	0.0	0.0	0.0	0.0	START NUDGE (2°/100ft BUR)	
1689.7	1696.6	13.93	259.10	-15.9	-82.8	23.2	84.3	EOB TO 13.93° INC	
1800.0	1810.2	13.93	259.10	-21.1	-109.6	30.7	111.6	9 5/8" SURFACE CSG	
5883.3	6017.2	13.93	259.10	-212.6	-1104.2	309.5	1124.5	END OF TANGENT	
6573.0	6713.8	0.00	0.00	-228.5	-1187.0	332.7	1208.8	EOD TO VERTICAL	
6603.0	6743.8	0.00	0.00	-228.5	-1187.0	332.7	1208.8	KOP (10°/100ft BUR)	
7176.0	7643.8	90.00	180.16	-801.5	-1188.6	903.5	1781.7	LANDING PNT - CS-SCOTT C4-1-13	
7176.0	20635.2	90.00	180.16	-13792.8	-1225.5	13847.1	14773.1	BHL - CS-SCOTT C4-1-13 (P3)	

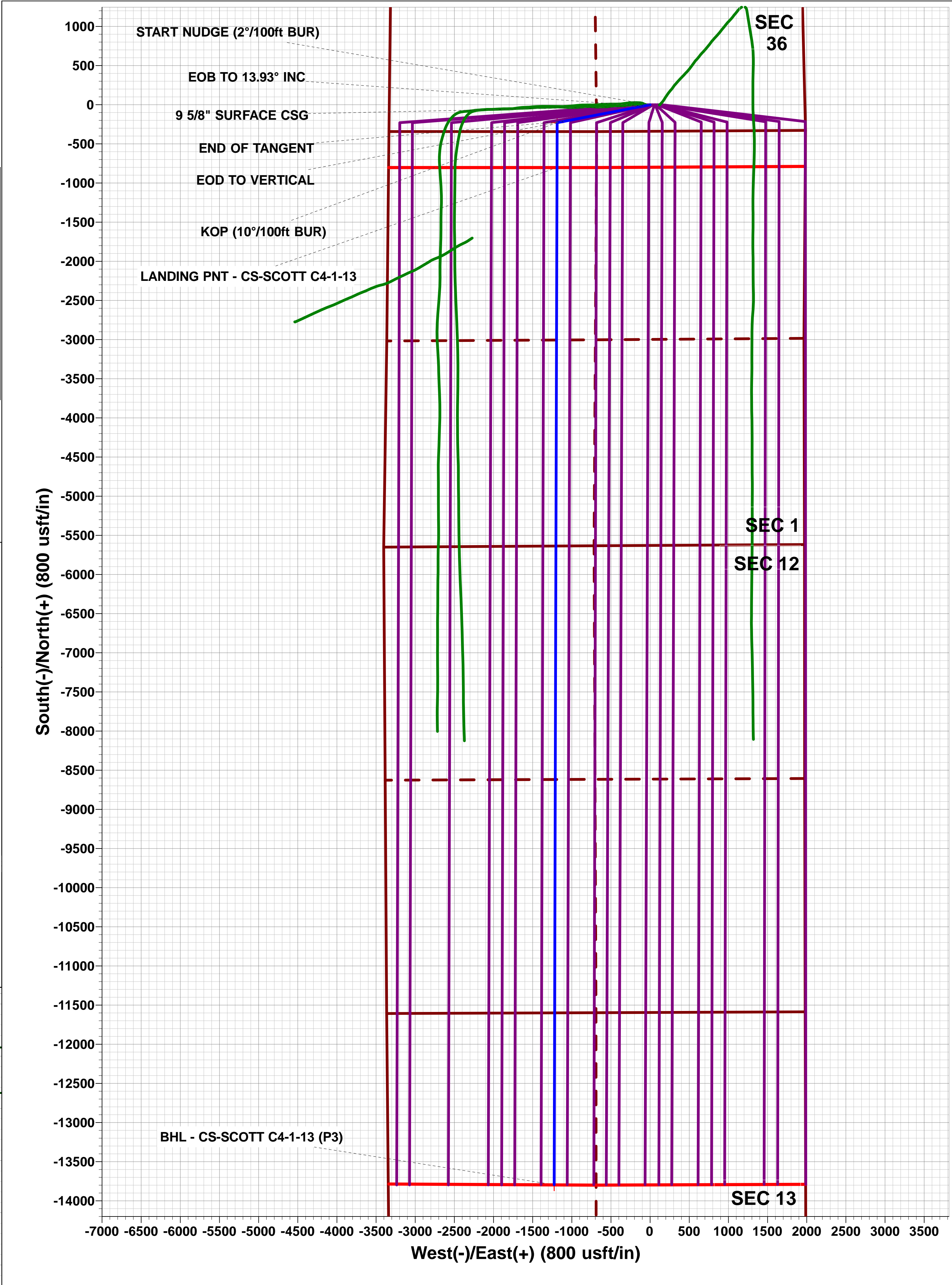
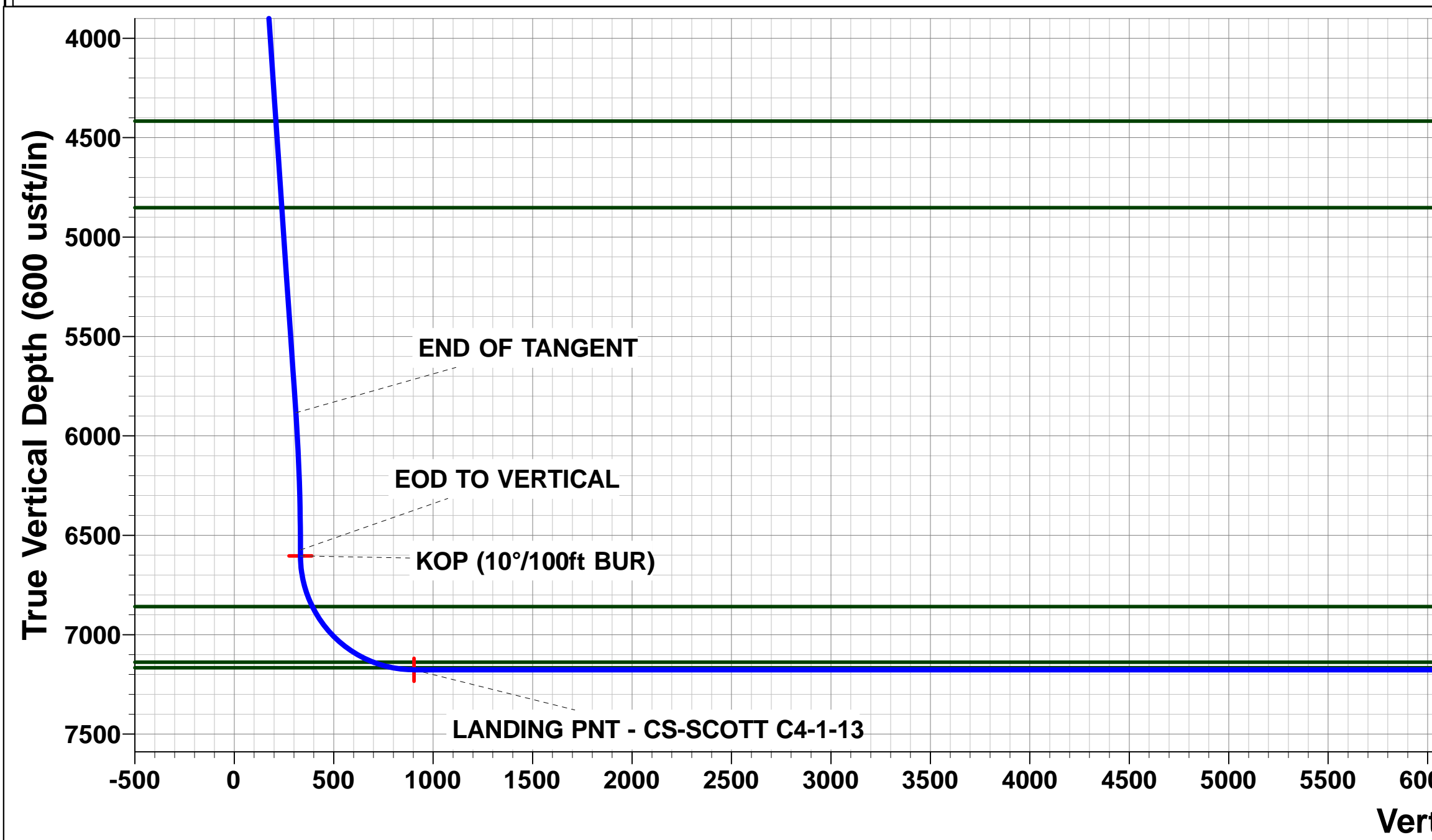
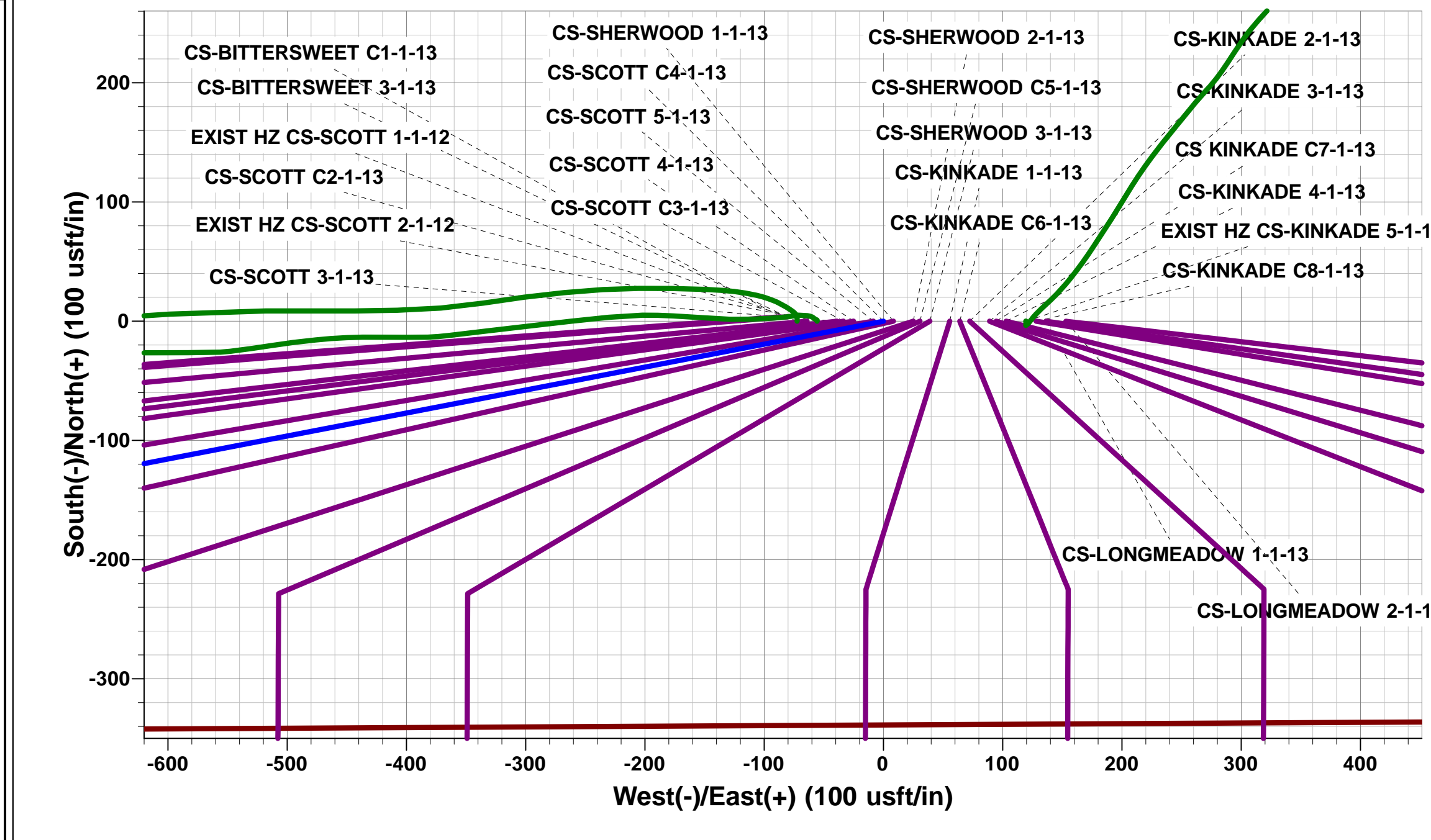
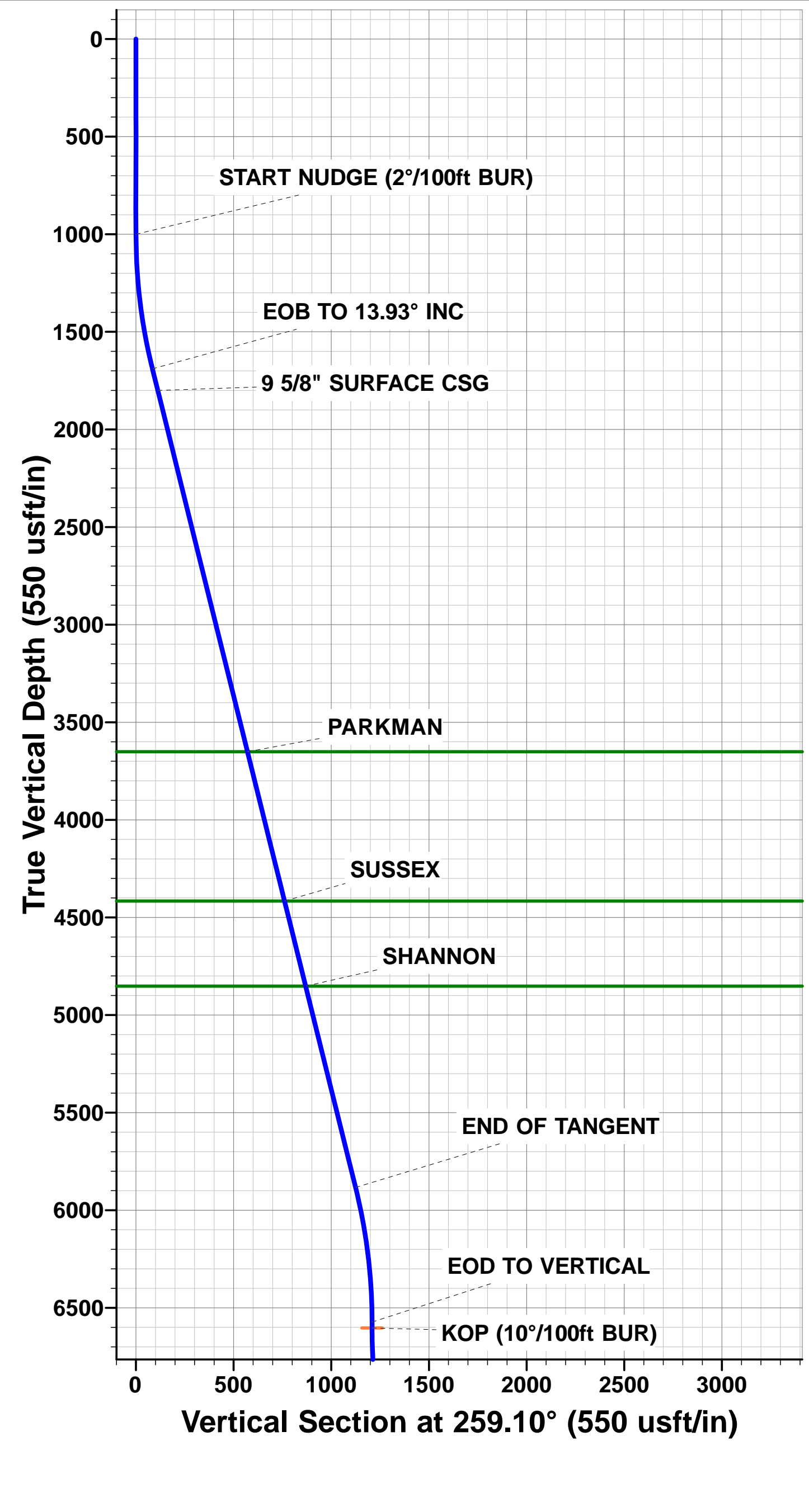
PROPOSED LOCAL COORDINATES:

SHL: 340ft FSL & 1976ft FEL Sec 36

LANDING PNT: 460ft FNL & 2151t FWL Sec 1

BHL: 2196ft FNL & 2119ft FWL Sec 13

WELLBORE TARGET DETAILS (LAT/LONG)					
Name	TVD	+N/-S	+E/-W	Latitude	Longitude
KOP - CS-SCOTT C4-1-13	6603.0	-228.5	-1187.0	40.437743	-104.727234
BHL - CS-SCOTT C4-1-13 (P3)	7176.0	-13792.8	-1225.5	40.400510	-104.727370
LANDING PNT - CS-SCOTT C4-1-13	7176.0	-801.5	-1188.6	40.436170	-104.727240



Planning Report



Database:	EDM 5000.1 Single User Db	Local Co-ordinate Reference:	Well CS-SCOTT C4-1-13
Company:	EXTRACTION OIL & GAS	TVD Reference:	KB-EST @ 4681.0usft (Original Well Elev)
Project:	WELD COUNTY, COLORADO (NAD 83)	MD Reference:	KB-EST @ 4681.0usft (Original Well Elev)
Site:	SW SE SEC 36 T6N R66W 6th P.M.	North Reference:	True
Well:	CS-SCOTT C4-1-13	Survey Calculation Method:	Minimum Curvature
Wellbore:	ORIGINAL WELLBORE		
Design:	PROPOSAL #3		

Project	WELD COUNTY, COLORADO (NAD 83)		
Map System:	US State Plane 1983	System Datum:	Mean Sea Level
Geo Datum:	North American Datum 1983		
Map Zone:	Colorado Northern Zone		Using geodetic scale factor

Site	SW SE SEC 36 T6N R66W 6th P.M.		
Site Position:		Northing:	1,403,485.52 usft
From:	Lat/Long	Easting:	3,216,213.28 usft
Position Uncertainty:	0.0 usft	Slot Radius:	1.10000ft
		Latitude:	40.438370
		Longitude:	-104.723230
		Grid Convergence:	0.50 °

Well	CS-SCOTT C4-1-13		
Well Position	+N/-S	0.0 usft	Northing:
	+E/-W	72.4 usft	Easting:
Position Uncertainty	0.0 usft		Wellhead Elevation:
			Latitude:
			Longitude:
			Ground Level:

Wellbore	ORIGINAL WELLBORE				
Magnetics	Model Name	Sample Date	Declination (°)	Dip Angle (°)	Field Strength (nT)
	IGRF2015	23/06/2015	8.40	66.94	52,644

Design	PROPOSAL #3			
Audit Notes:				
Version:	Phase:	PROTOTYPE	Tie On Depth:	0.0
Vertical Section:	Depth From (TVD) (usft)	+N/-S (usft)	+E/-W (usft)	Direction (°)
	7,176.0	0.0	0.0	185.08

Plan Sections											
MD (usft)	Inc (°)	Azi (°)	Vertical Depth	SS (usft)	+N/-S (usft)	+E/-W (usft)	Dogleg Rate (°/100usft)	Build Rate (°/100usft)	Turn Rate (°/100usft)	TFO (°)	Target
0.0	0.00	0.00	0.0	-4,681.0	0.0	0.0	0.00	0.00	0.00	0.00	
1,000.0	0.00	0.00	1,000.0	-3,681.0	0.0	0.0	0.00	0.00	0.00	0.00	
1,696.6	13.93	259.10	1,689.7	-2,991.3	-15.9	-82.8	2.00	2.00	0.00	259.10	
6,017.2	13.93	259.10	5,883.3	1,202.3	-212.6	-1,104.2	0.00	0.00	0.00	0.00	
6,713.8	0.00	0.00	6,573.0	1,892.0	-228.5	-1,187.0	2.00	-2.00	0.00	180.00	
6,743.8	0.00	0.00	6,603.0	1,922.0	-228.5	-1,187.0	0.00	0.00	0.00	0.00	KOP - CS-SCOTT C
7,643.8	90.00	180.16	7,176.0	2,495.0	-801.5	-1,188.6	10.00	10.00	-19.98	180.16	LANDING PNT - CS
20,635.2	90.00	180.16	7,176.0	2,495.0	-13,792.8	-1,225.5	0.00	0.00	0.00	-29.69	BHL - CS-SCOTT C

Planning Report



Database:	EDM 5000.1 Single User Db	Local Co-ordinate Reference:	Well CS-SCOTT C4-1-13
Company:	EXTRACTION OIL & GAS	TVD Reference:	KB-EST @ 4681.0usft (Original Well Elev)
Project:	WELD COUNTY, COLORADO (NAD 83)	MD Reference:	KB-EST @ 4681.0usft (Original Well Elev)
Site:	SW SE SEC 36 T6N R66W 6th P.M.	North Reference:	True
Well:	CS-SCOTT C4-1-13	Survey Calculation Method:	Minimum Curvature
Wellbore:	ORIGINAL WELLBORE		
Design:	PROPOSAL #3		

Planned Survey

MD (usft)	Inc (°)	Azi (°)	TVD (usft)	SS (usft)	+N/-S (usft)	+E/-W (usft)	Vertical Section (usft)	Dogleg Rate (°/100usft)	Build Rate (°/100usft)	Turn Rate (°/100usft)
0.0	0.00	0.00	0.0	4,681.00	0.0	0.0	0.0	0.00	0.00	0.00
100.0	0.00	0.00	100.0	4,581.00	0.0	0.0	0.0	0.00	0.00	0.00
200.0	0.00	0.00	200.0	4,481.00	0.0	0.0	0.0	0.00	0.00	0.00
300.0	0.00	0.00	300.0	4,381.00	0.0	0.0	0.0	0.00	0.00	0.00
400.0	0.00	0.00	400.0	4,281.00	0.0	0.0	0.0	0.00	0.00	0.00
500.0	0.00	0.00	500.0	4,181.00	0.0	0.0	0.0	0.00	0.00	0.00
600.0	0.00	0.00	600.0	4,081.00	0.0	0.0	0.0	0.00	0.00	0.00
700.0	0.00	0.00	700.0	3,981.00	0.0	0.0	0.0	0.00	0.00	0.00
800.0	0.00	0.00	800.0	3,881.00	0.0	0.0	0.0	0.00	0.00	0.00
900.0	0.00	0.00	900.0	3,781.00	0.0	0.0	0.0	0.00	0.00	0.00
START NUDGE (2°/100ft BUR)										
1,000.0	0.00	0.00	1,000.0	3,681.00	0.0	0.0	0.0	0.00	0.00	0.00
1,100.0	2.00	259.10	1,100.0	3,581.02	-0.3	-1.7	0.5	2.00	2.00	0.00
1,200.0	4.00	259.10	1,199.8	3,481.16	-1.3	-6.9	1.9	2.00	2.00	0.00
1,300.0	6.00	259.10	1,299.5	3,381.55	-3.0	-15.4	4.3	2.00	2.00	0.00
1,400.0	8.00	259.10	1,398.7	3,282.30	-5.3	-27.4	7.7	2.00	2.00	0.00
1,500.0	10.00	259.10	1,497.5	3,183.53	-8.2	-42.7	12.0	2.00	2.00	0.00
1,600.0	12.00	259.10	1,595.6	3,085.38	-11.8	-61.5	17.2	2.00	2.00	0.00
EOB TO 13.93° INC										
1,696.6	13.93	259.10	1,689.7	2,991.26	-15.9	-82.8	23.2	2.00	2.00	0.00
1,700.0	13.93	259.10	1,693.1	2,987.94	-16.1	-83.6	23.4	0.00	0.00	0.00
1,800.0	13.93	259.10	1,790.1	2,890.89	-20.6	-107.2	30.0	0.00	0.00	0.00
9 5/8" SURFACE CSG										
1,810.2	13.93	259.10	1,800.0	2,881.00	-21.1	-109.6	30.7	0.00	0.00	0.00
1,900.0	13.93	259.10	1,887.2	2,793.83	-25.2	-130.8	36.7	0.00	0.00	0.00
2,000.0	13.93	259.10	1,984.2	2,696.77	-29.7	-154.5	43.3	0.00	0.00	0.00
2,100.0	13.93	259.10	2,081.3	2,599.71	-34.3	-178.1	49.9	0.00	0.00	0.00
2,200.0	13.93	259.10	2,178.3	2,502.65	-38.8	-201.8	56.5	0.00	0.00	0.00
2,300.0	13.93	259.10	2,275.4	2,405.59	-43.4	-225.4	63.2	0.00	0.00	0.00
2,400.0	13.93	259.10	2,372.5	2,308.54	-47.9	-249.1	69.8	0.00	0.00	0.00
2,500.0	13.93	259.10	2,469.5	2,211.48	-52.5	-272.7	76.4	0.00	0.00	0.00
2,600.0	13.93	259.10	2,566.6	2,114.42	-57.0	-296.3	83.0	0.00	0.00	0.00
2,700.0	13.93	259.10	2,663.6	2,017.36	-61.6	-320.0	89.7	0.00	0.00	0.00
2,800.0	13.93	259.10	2,760.7	1,920.30	-66.1	-343.6	96.3	0.00	0.00	0.00
2,900.0	13.93	259.10	2,857.8	1,823.24	-70.7	-367.3	102.9	0.00	0.00	0.00
3,000.0	13.93	259.10	2,954.8	1,726.19	-75.3	-390.9	109.6	0.00	0.00	0.00
3,100.0	13.93	259.10	3,051.9	1,629.13	-79.8	-414.6	116.2	0.00	0.00	0.00
3,200.0	13.93	259.10	3,148.9	1,532.07	-84.4	-438.2	122.8	0.00	0.00	0.00
3,300.0	13.93	259.10	3,246.0	1,435.01	-88.9	-461.8	129.4	0.00	0.00	0.00
3,400.0	13.93	259.10	3,343.0	1,337.95	-93.5	-485.5	136.1	0.00	0.00	0.00
3,500.0	13.93	259.10	3,440.1	1,240.89	-98.0	-509.1	142.7	0.00	0.00	0.00
3,600.0	13.93	259.10	3,537.2	1,143.84	-102.6	-532.8	149.3	0.00	0.00	0.00
3,700.0	13.93	259.10	3,634.2	1,046.78	-107.1	-556.4	155.9	0.00	0.00	0.00
PARKMAN										
3,717.3	13.93	259.10	3,651.0	1,030.00	-107.9	-560.5	157.1	0.00	0.00	0.00
3,800.0	13.93	259.10	3,731.3	949.72	-111.7	-580.0	162.6	0.00	0.00	0.00
3,900.0	13.93	259.10	3,828.3	852.66	-116.2	-603.7	169.2	0.00	0.00	0.00
4,000.0	13.93	259.10	3,925.4	755.60	-120.8	-627.3	175.8	0.00	0.00	0.00
4,100.0	13.93	259.10	4,022.5	658.54	-125.3	-651.0	182.4	0.00	0.00	0.00
4,200.0	13.93	259.10	4,119.5	561.49	-129.9	-674.6	189.1	0.00	0.00	0.00
4,300.0	13.93	259.10	4,216.6	464.43	-134.4	-698.3	195.7	0.00	0.00	0.00
4,400.0	13.93	259.10	4,313.6	367.37	-139.0	-721.9	202.3	0.00	0.00	0.00
4,500.0	13.93	259.10	4,410.7	270.31	-143.5	-745.5	208.9	0.00	0.00	0.00
SUSSEX										

Planning Report



Database:	EDM 5000.1 Single User Db	Local Co-ordinate Reference:	Well CS-SCOTT C4-1-13
Company:	EXTRACTION OIL & GAS	TVD Reference:	KB-EST @ 4681.0usft (Original Well Elev)
Project:	WELD COUNTY, COLORADO (NAD 83)	MD Reference:	KB-EST @ 4681.0usft (Original Well Elev)
Site:	SW SE SEC 36 T6N R66W 6th P.M.	North Reference:	True
Well:	CS-SCOTT C4-1-13	Survey Calculation Method:	Minimum Curvature
Wellbore:	ORIGINAL WELLBORE		
Design:	PROPOSAL #3		

Planned Survey

MD (usft)	Inc (°)	Azi (°)	TVD (usft)	SS (usft)	+N/-S (usft)	+E/-W (usft)	Vertical Section (usft)	Dogleg Rate (°/100usft)	Build Rate (°/100usft)	Turn Rate (°/100usft)
4,505.5	13.93	259.10	4,416.0	265.00	-143.8	-746.8	209.3	0.00	0.00	0.00
4,600.0	13.93	259.10	4,507.7	173.25	-148.1	-769.2	215.6	0.00	0.00	0.00
4,700.0	13.93	259.10	4,604.8	76.19	-152.6	-792.8	222.2	0.00	0.00	0.00
4,800.0	13.93	259.10	4,701.9	-20.87	-157.2	-816.5	228.8	0.00	0.00	0.00
4,900.0	13.93	259.10	4,798.9	-117.92	-161.7	-840.1	235.4	0.00	0.00	0.00
SHANNON										
4,954.7	13.93	259.10	4,852.0	-171.00	-164.2	-853.0	239.1	0.00	0.00	0.00
5,000.0	13.93	259.10	4,896.0	-214.98	-166.3	-863.8	242.1	0.00	0.00	0.00
5,100.0	13.93	259.10	4,993.0	-312.04	-170.8	-887.4	248.7	0.00	0.00	0.00
5,200.0	13.93	259.10	5,090.1	-409.10	-175.4	-911.0	255.3	0.00	0.00	0.00
5,300.0	13.93	259.10	5,187.2	-506.16	-179.9	-934.7	261.9	0.00	0.00	0.00
5,400.0	13.93	259.10	5,284.2	-603.22	-184.5	-958.3	268.6	0.00	0.00	0.00
5,500.0	13.93	259.10	5,381.3	-700.27	-189.0	-982.0	275.2	0.00	0.00	0.00
5,600.0	13.93	259.10	5,478.3	-797.33	-193.6	-1,005.6	281.8	0.00	0.00	0.00
5,700.0	13.93	259.10	5,575.4	-894.39	-198.1	-1,029.3	288.4	0.00	0.00	0.00
5,800.0	13.93	259.10	5,672.4	-991.45	-202.7	-1,052.9	295.1	0.00	0.00	0.00
5,900.0	13.93	259.10	5,769.5	-1,088.51	-207.2	-1,076.5	301.7	0.00	0.00	0.00
6,000.0	13.93	259.10	5,866.6	-1,185.57	-211.8	-1,100.2	308.3	0.00	0.00	0.00
END OF TANGENT										
6,017.2	13.93	259.10	5,883.3	-1,202.26	-212.6	-1,104.2	309.5	0.00	0.00	0.00
6,100.0	12.28	259.10	5,963.9	-1,282.90	-216.1	-1,122.7	314.6	2.00	-2.00	0.00
6,200.0	10.28	259.10	6,062.0	-1,380.97	-219.8	-1,141.9	320.0	2.00	-2.00	0.00
6,300.0	8.28	259.10	6,160.7	-1,479.65	-222.9	-1,157.7	324.4	2.00	-2.00	0.00
6,400.0	6.28	259.10	6,259.8	-1,578.84	-225.3	-1,170.1	327.9	2.00	-2.00	0.00
6,500.0	4.28	259.10	6,359.4	-1,678.41	-227.0	-1,179.2	330.5	2.00	-2.00	0.00
6,600.0	2.28	259.10	6,459.2	-1,778.25	-228.1	-1,184.8	332.0	2.00	-2.00	0.00
6,700.0	0.28	259.10	6,559.2	-1,878.22	-228.5	-1,187.0	332.6	2.00	-2.00	0.00
EOD TO VERTICAL										
6,713.8	0.00	0.00	6,573.0	-1,892.00	-228.5	-1,187.0	332.7	2.00	-2.00	0.00
KOP (10°/100ft BUR)										
6,743.8	0.00	0.00	6,603.0	-1,922.00	-228.5	-1,187.0	332.7	0.00	0.00	0.00
6,800.0	5.62	180.16	6,659.1	-1,978.13	-231.3	-1,187.0	335.4	10.00	10.00	0.00
6,900.0	15.62	180.16	6,757.3	-2,076.29	-249.7	-1,187.1	353.7	10.00	10.00	0.00
7,000.0	25.62	180.16	6,850.8	-2,169.76	-284.8	-1,187.2	388.8	10.00	10.00	0.00
NIOBRARA										
7,008.1	26.43	180.16	6,858.0	-2,177.00	-288.4	-1,187.2	392.3	10.00	10.00	0.00
7,100.0	35.62	180.16	6,936.7	-2,255.71	-335.7	-1,187.3	439.5	10.00	10.00	0.00
7,200.0	45.62	180.16	7,012.5	-2,331.52	-400.7	-1,187.5	504.2	10.00	10.00	0.00
7,300.0	55.62	180.16	7,075.9	-2,394.89	-477.9	-1,187.7	581.2	10.00	10.00	0.00
7,400.0	65.62	180.16	7,124.9	-2,443.89	-564.9	-1,188.0	667.9	10.00	10.00	0.00
FORT HAYS										
7,434.0	69.02	180.16	7,138.0	-2,457.00	-596.3	-1,188.1	699.1	10.00	10.00	0.00
7,500.0	75.62	180.16	7,158.0	-2,477.04	-659.2	-1,188.2	761.7	10.00	10.00	0.00
CODELL										
7,536.6	79.28	180.16	7,166.0	-2,485.00	-694.9	-1,188.3	797.4	10.00	10.00	0.00
7,600.0	85.62	180.16	7,174.3	-2,493.32	-757.7	-1,188.5	859.9	10.00	10.00	0.00
LANDING PNT - CS-SCOTT C4-1-13										
7,643.8	90.00	180.16	7,176.0	-2,495.00	-801.5	-1,188.6	903.5	10.00	10.00	0.00
7,700.0	90.00	180.16	7,176.0	-2,495.00	-857.6	-1,188.8	959.5	0.00	0.00	0.00
7,800.0	90.00	180.16	7,176.0	-2,495.01	-957.6	-1,189.1	1,059.1	0.00	0.00	0.00
7,900.0	90.00	180.16	7,176.0	-2,495.02	-1,057.6	-1,189.4	1,158.8	0.00	0.00	0.00
8,000.0	90.00	180.16	7,176.0	-2,495.03	-1,157.6	-1,189.7	1,258.4	0.00	0.00	0.00
8,100.0	90.00	180.16	7,176.0	-2,495.03	-1,257.6	-1,190.0	1,358.0	0.00	0.00	0.00

Planning Report



Database:	EDM 5000.1 Single User Db	Local Co-ordinate Reference:	Well CS-SCOTT C4-1-13
Company:	EXTRACTION OIL & GAS	TVD Reference:	KB-EST @ 4681.0usft (Original Well Elev)
Project:	WELD COUNTY, COLORADO (NAD 83)	MD Reference:	KB-EST @ 4681.0usft (Original Well Elev)
Site:	SW SE SEC 36 T6N R66W 6th P.M.	North Reference:	True
Well:	CS-SCOTT C4-1-13	Survey Calculation Method:	Minimum Curvature
Wellbore:	ORIGINAL WELLBORE		
Design:	PROPOSAL #3		

Planned Survey										
MD (usft)	Inc (°)	Azi (°)	TVD (usft)	SS (usft)	+N/-S (usft)	+E/-W (usft)	Vertical Section (usft)	Dogleg Rate (°/100usft)	Build Rate (°/100usft)	Turn Rate (°/100usft)
8,200.0	90.00	180.16	7,176.0	-2,495.04	-1,357.6	-1,190.3	1,457.7	0.00	0.00	0.00
8,300.0	90.00	180.16	7,176.0	-2,495.05	-1,457.6	-1,190.5	1,557.3	0.00	0.00	0.00
8,400.0	90.00	180.16	7,176.1	-2,495.05	-1,557.6	-1,190.8	1,656.9	0.00	0.00	0.00
8,500.0	90.00	180.16	7,176.1	-2,495.06	-1,657.6	-1,191.1	1,756.6	0.00	0.00	0.00
8,600.0	90.00	180.16	7,176.1	-2,495.07	-1,757.6	-1,191.4	1,856.2	0.00	0.00	0.00
8,700.0	90.00	180.16	7,176.1	-2,495.07	-1,857.6	-1,191.7	1,955.8	0.00	0.00	0.00
8,800.0	90.00	180.16	7,176.1	-2,495.08	-1,957.6	-1,192.0	2,055.5	0.00	0.00	0.00
8,900.0	90.00	180.16	7,176.1	-2,495.09	-2,057.6	-1,192.3	2,155.1	0.00	0.00	0.00
9,000.0	90.00	180.16	7,176.1	-2,495.09	-2,157.6	-1,192.5	2,254.7	0.00	0.00	0.00
9,100.0	90.00	180.16	7,176.1	-2,495.10	-2,257.6	-1,192.8	2,354.3	0.00	0.00	0.00
9,200.0	90.00	180.16	7,176.1	-2,495.11	-2,357.6	-1,193.1	2,454.0	0.00	0.00	0.00
9,300.0	90.00	180.16	7,176.1	-2,495.11	-2,457.6	-1,193.4	2,553.6	0.00	0.00	0.00
9,400.0	90.00	180.16	7,176.1	-2,495.12	-2,557.6	-1,193.7	2,653.2	0.00	0.00	0.00
9,500.0	90.00	180.16	7,176.1	-2,495.12	-2,657.6	-1,194.0	2,752.9	0.00	0.00	0.00
9,600.0	90.00	180.16	7,176.1	-2,495.13	-2,757.6	-1,194.3	2,852.5	0.00	0.00	0.00
9,700.0	90.00	180.16	7,176.1	-2,495.13	-2,857.6	-1,194.6	2,952.1	0.00	0.00	0.00
9,800.0	90.00	180.16	7,176.1	-2,495.14	-2,957.6	-1,194.8	3,051.8	0.00	0.00	0.00
9,900.0	90.00	180.16	7,176.1	-2,495.14	-3,057.6	-1,195.1	3,151.4	0.00	0.00	0.00
10,000.0	90.00	180.16	7,176.1	-2,495.15	-3,157.6	-1,195.4	3,251.0	0.00	0.00	0.00
10,100.0	90.00	180.16	7,176.2	-2,495.15	-3,257.6	-1,195.7	3,350.7	0.00	0.00	0.00
10,200.0	90.00	180.16	7,176.2	-2,495.16	-3,357.6	-1,196.0	3,450.3	0.00	0.00	0.00
10,300.0	90.00	180.16	7,176.2	-2,495.16	-3,457.6	-1,196.3	3,549.9	0.00	0.00	0.00
10,400.0	90.00	180.16	7,176.2	-2,495.17	-3,557.6	-1,196.6	3,649.6	0.00	0.00	0.00
10,500.0	90.00	180.16	7,176.2	-2,495.17	-3,657.6	-1,196.8	3,749.2	0.00	0.00	0.00
10,600.0	90.00	180.16	7,176.2	-2,495.18	-3,757.6	-1,197.1	3,848.8	0.00	0.00	0.00
10,700.0	90.00	180.16	7,176.2	-2,495.18	-3,857.6	-1,197.4	3,948.5	0.00	0.00	0.00
10,800.0	90.00	180.16	7,176.2	-2,495.18	-3,957.6	-1,197.7	4,048.1	0.00	0.00	0.00
10,900.0	90.00	180.16	7,176.2	-2,495.19	-4,057.6	-1,198.0	4,147.7	0.00	0.00	0.00
11,000.0	90.00	180.16	7,176.2	-2,495.19	-4,157.6	-1,198.3	4,247.4	0.00	0.00	0.00
11,100.0	90.00	180.16	7,176.2	-2,495.20	-4,257.6	-1,198.6	4,347.0	0.00	0.00	0.00
11,200.0	90.00	180.16	7,176.2	-2,495.20	-4,357.6	-1,198.8	4,446.6	0.00	0.00	0.00
11,300.0	90.00	180.16	7,176.2	-2,495.20	-4,457.6	-1,199.1	4,546.3	0.00	0.00	0.00
11,400.0	90.00	180.16	7,176.2	-2,495.21	-4,557.6	-1,199.4	4,645.9	0.00	0.00	0.00
11,500.0	90.00	180.16	7,176.2	-2,495.21	-4,657.6	-1,199.7	4,745.5	0.00	0.00	0.00
11,600.0	90.00	180.16	7,176.2	-2,495.21	-4,757.6	-1,200.0	4,845.2	0.00	0.00	0.00
11,700.0	90.00	180.16	7,176.2	-2,495.22	-4,857.6	-1,200.3	4,944.8	0.00	0.00	0.00
11,800.0	90.00	180.16	7,176.2	-2,495.22	-4,957.6	-1,200.6	5,044.4	0.00	0.00	0.00
11,900.0	90.00	180.16	7,176.2	-2,495.22	-5,057.6	-1,200.8	5,144.1	0.00	0.00	0.00
12,000.0	90.00	180.16	7,176.2	-2,495.22	-5,157.6	-1,201.1	5,243.7	0.00	0.00	0.00
12,100.0	90.00	180.16	7,176.2	-2,495.23	-5,257.6	-1,201.4	5,343.3	0.00	0.00	0.00
12,200.0	90.00	180.16	7,176.2	-2,495.23	-5,357.6	-1,201.7	5,443.0	0.00	0.00	0.00
12,300.0	90.00	180.16	7,176.2	-2,495.23	-5,457.6	-1,202.0	5,542.6	0.00	0.00	0.00
12,400.0	90.00	180.16	7,176.2	-2,495.23	-5,557.6	-1,202.3	5,642.2	0.00	0.00	0.00
12,500.0	90.00	180.16	7,176.2	-2,495.23	-5,657.6	-1,202.6	5,741.9	0.00	0.00	0.00
12,600.0	90.00	180.16	7,176.2	-2,495.24	-5,757.6	-1,202.8	5,841.5	0.00	0.00	0.00
12,700.0	90.00	180.16	7,176.2	-2,495.24	-5,857.6	-1,203.1	5,941.1	0.00	0.00	0.00
12,800.0	90.00	180.16	7,176.2	-2,495.24	-5,957.6	-1,203.4	6,040.8	0.00	0.00	0.00
12,900.0	90.00	180.16	7,176.2	-2,495.24	-6,057.6	-1,203.7	6,140.4	0.00	0.00	0.00
13,000.0	90.00	180.16	7,176.2	-2,495.24	-6,157.6	-1,204.0	6,240.0	0.00	0.00	0.00
13,100.0	90.00	180.16	7,176.2	-2,495.24	-6,257.6	-1,204.3	6,339.6	0.00	0.00	0.00
13,200.0	90.00	180.16	7,176.2	-2,495.25	-6,357.6	-1,204.5	6,439.3	0.00	0.00	0.00
13,300.0	90.00	180.16	7,176.2	-2,495.25	-6,457.6	-1,204.8	6,538.9	0.00	0.00	0.00
13,400.0	90.00	180.16	7,176.2	-2,495.25	-6,557.6	-1,205.1	6,638.5	0.00	0.00	0.00
13,500.0	90.00	180.16	7,176.2	-2,495.25	-6,657.6	-1,205.4	6,738.2	0.00	0.00	0.00

Planning Report



Database:	EDM 5000.1 Single User Db	Local Co-ordinate Reference:	Well CS-SCOTT C4-1-13
Company:	EXTRACTION OIL & GAS	TVD Reference:	KB-EST @ 4681.0usft (Original Well Elev)
Project:	WELD COUNTY, COLORADO (NAD 83)	MD Reference:	KB-EST @ 4681.0usft (Original Well Elev)
Site:	SW SE SEC 36 T6N R66W 6th P.M.	North Reference:	True
Well:	CS-SCOTT C4-1-13	Survey Calculation Method:	Minimum Curvature
Wellbore:	ORIGINAL WELLBORE		
Design:	PROPOSAL #3		

Planned Survey										
MD (usft)	Inc (°)	Azi (°)	TVD (usft)	SS (usft)	+N/-S (usft)	+E/-W (usft)	Vertical Section (usft)	Dogleg Rate (°/100usft)	Build Rate (°/100usft)	Turn Rate (°/100usft)
13,600.0	90.00	180.16	7,176.2	-2,495.25	-6,757.6	-1,205.7	6,837.8	0.00	0.00	0.00
13,700.0	90.00	180.16	7,176.2	-2,495.25	-6,857.6	-1,206.0	6,937.4	0.00	0.00	0.00
13,800.0	90.00	180.16	7,176.3	-2,495.25	-6,957.6	-1,206.2	7,037.1	0.00	0.00	0.00
13,900.0	90.00	180.16	7,176.3	-2,495.25	-7,057.6	-1,206.5	7,136.7	0.00	0.00	0.00
14,000.0	90.00	180.16	7,176.3	-2,495.25	-7,157.6	-1,206.8	7,236.3	0.00	0.00	0.00
14,100.0	90.00	180.16	7,176.3	-2,495.25	-7,257.6	-1,207.1	7,336.0	0.00	0.00	0.00
14,200.0	90.00	180.16	7,176.3	-2,495.25	-7,357.6	-1,207.4	7,435.6	0.00	0.00	0.00
14,300.0	90.00	180.16	7,176.3	-2,495.25	-7,457.6	-1,207.7	7,535.2	0.00	0.00	0.00
14,400.0	90.00	180.16	7,176.3	-2,495.25	-7,557.6	-1,207.9	7,634.9	0.00	0.00	0.00
14,500.0	90.00	180.16	7,176.2	-2,495.25	-7,657.6	-1,208.2	7,734.5	0.00	0.00	0.00
14,600.0	90.00	180.16	7,176.2	-2,495.25	-7,757.6	-1,208.5	7,834.1	0.00	0.00	0.00
14,700.0	90.00	180.16	7,176.2	-2,495.25	-7,857.6	-1,208.8	7,933.8	0.00	0.00	0.00
14,800.0	90.00	180.16	7,176.2	-2,495.25	-7,957.6	-1,209.1	8,033.4	0.00	0.00	0.00
14,900.0	90.00	180.16	7,176.2	-2,495.25	-8,057.6	-1,209.4	8,133.0	0.00	0.00	0.00
15,000.0	90.00	180.16	7,176.2	-2,495.25	-8,157.6	-1,209.6	8,232.7	0.00	0.00	0.00
15,100.0	90.00	180.16	7,176.2	-2,495.25	-8,257.6	-1,209.9	8,332.3	0.00	0.00	0.00
15,200.0	90.00	180.16	7,176.2	-2,495.24	-8,357.6	-1,210.2	8,431.9	0.00	0.00	0.00
15,300.0	90.00	180.16	7,176.2	-2,495.24	-8,457.6	-1,210.5	8,531.6	0.00	0.00	0.00
15,400.0	90.00	180.16	7,176.2	-2,495.24	-8,557.6	-1,210.8	8,631.2	0.00	0.00	0.00
15,500.0	90.00	180.16	7,176.2	-2,495.24	-8,657.6	-1,211.1	8,730.8	0.00	0.00	0.00
15,600.0	90.00	180.16	7,176.2	-2,495.24	-8,757.6	-1,211.3	8,830.5	0.00	0.00	0.00
15,700.0	90.00	180.16	7,176.2	-2,495.24	-8,857.6	-1,211.6	8,930.1	0.00	0.00	0.00
15,800.0	90.00	180.16	7,176.2	-2,495.23	-8,957.6	-1,211.9	9,029.7	0.00	0.00	0.00
15,900.0	90.00	180.16	7,176.2	-2,495.23	-9,057.6	-1,212.2	9,129.4	0.00	0.00	0.00
16,000.0	90.00	180.16	7,176.2	-2,495.23	-9,157.6	-1,212.5	9,229.0	0.00	0.00	0.00
16,100.0	90.00	180.16	7,176.2	-2,495.23	-9,257.6	-1,212.8	9,328.6	0.00	0.00	0.00
16,200.0	90.00	180.16	7,176.2	-2,495.23	-9,357.6	-1,213.0	9,428.2	0.00	0.00	0.00
16,300.0	90.00	180.16	7,176.2	-2,495.22	-9,457.6	-1,213.3	9,527.9	0.00	0.00	0.00
16,400.0	90.00	180.16	7,176.2	-2,495.22	-9,557.6	-1,213.6	9,627.5	0.00	0.00	0.00
16,500.0	90.00	180.16	7,176.2	-2,495.22	-9,657.6	-1,213.9	9,727.1	0.00	0.00	0.00
16,600.0	90.00	180.16	7,176.2	-2,495.21	-9,757.6	-1,214.2	9,826.8	0.00	0.00	0.00
16,700.0	90.00	180.16	7,176.2	-2,495.21	-9,857.6	-1,214.4	9,926.4	0.00	0.00	0.00
16,800.0	90.00	180.16	7,176.2	-2,495.21	-9,957.6	-1,214.7	10,026.0	0.00	0.00	0.00
16,900.0	90.00	180.16	7,176.2	-2,495.21	-10,057.6	-1,215.0	10,125.7	0.00	0.00	0.00
17,000.0	90.00	180.16	7,176.2	-2,495.20	-10,157.6	-1,215.3	10,225.3	0.00	0.00	0.00
17,100.0	90.00	180.16	7,176.2	-2,495.20	-10,257.6	-1,215.6	10,324.9	0.00	0.00	0.00
17,200.0	90.00	180.16	7,176.2	-2,495.20	-10,357.6	-1,215.9	10,424.6	0.00	0.00	0.00
17,300.0	90.00	180.16	7,176.2	-2,495.19	-10,457.6	-1,216.1	10,524.2	0.00	0.00	0.00
17,400.0	90.00	180.16	7,176.2	-2,495.19	-10,557.6	-1,216.4	10,623.8	0.00	0.00	0.00
17,500.0	90.00	180.16	7,176.2	-2,495.18	-10,657.6	-1,216.7	10,723.5	0.00	0.00	0.00
17,600.0	90.00	180.16	7,176.2	-2,495.18	-10,757.6	-1,217.0	10,823.1	0.00	0.00	0.00
17,700.0	90.00	180.16	7,176.2	-2,495.18	-10,857.6	-1,217.3	10,922.7	0.00	0.00	0.00
17,800.0	90.00	180.16	7,176.2	-2,495.17	-10,957.6	-1,217.5	11,022.4	0.00	0.00	0.00
17,900.0	90.00	180.16	7,176.2	-2,495.17	-11,057.6	-1,217.8	11,122.0	0.00	0.00	0.00
18,000.0	90.00	180.16	7,176.2	-2,495.16	-11,157.6	-1,218.1	11,221.6	0.00	0.00	0.00
18,100.0	90.00	180.16	7,176.2	-2,495.16	-11,257.6	-1,218.4	11,321.3	0.00	0.00	0.00
18,200.0	90.00	180.16	7,176.2	-2,495.15	-11,357.6	-1,218.7	11,420.9	0.00	0.00	0.00
18,300.0	90.00	180.16	7,176.1	-2,495.15	-11,457.6	-1,218.9	11,520.5	0.00	0.00	0.00
18,400.0	90.00	180.16	7,176.1	-2,495.14	-11,557.6	-1,219.2	11,620.2	0.00	0.00	0.00
18,500.0	90.00	180.16	7,176.1	-2,495.14	-11,657.6	-1,219.5	11,719.8	0.00	0.00	0.00
18,600.0	90.00	180.16	7,176.1	-2,495.13	-11,757.6	-1,219.8	11,819.4	0.00	0.00	0.00
18,700.0	90.00	180.16	7,176.1	-2,495.13	-11,857.6	-1,220.1	11,919.1	0.00	0.00	0.00
18,800.0	90.00	180.16	7,176.1	-2,495.12	-11,957.6	-1,220.3	12,018.7	0.00	0.00	0.00
18,900.0	90.00	180.16	7,176.1	-2,495.12	-12,057.6	-1,220.6	12,118.3	0.00	0.00	0.00

Planning Report



Database:	EDM 5000.1 Single User Db	Local Co-ordinate Reference:	Well CS-SCOTT C4-1-13
Company:	EXTRACTION OIL & GAS	TVD Reference:	KB-EST @ 4681.0usft (Original Well Elev)
Project:	WELD COUNTY, COLORADO (NAD 83)	MD Reference:	KB-EST @ 4681.0usft (Original Well Elev)
Site:	SW SE SEC 36 T6N R66W 6th P.M.	North Reference:	True
Well:	CS-SCOTT C4-1-13	Survey Calculation Method:	Minimum Curvature
Wellbore:	ORIGINAL WELLBORE		
Design:	PROPOSAL #3		

Planned Survey										
MD (usft)	Inc (°)	Azi (°)	TVD (usft)	SS (usft)	+N/-S (usft)	+E/-W (usft)	Vertical Section (usft)	Dogleg Rate (°/100usft)	Build Rate (°/100usft)	Turn Rate (°/100usft)
19,000.0	90.00	180.16	7,176.1	-2,495.11	-12,157.6	-1,220.9	12,217.9	0.00	0.00	0.00
19,100.0	90.00	180.16	7,176.1	-2,495.10	-12,257.6	-1,221.2	12,317.6	0.00	0.00	0.00
19,200.0	90.00	180.16	7,176.1	-2,495.10	-12,357.6	-1,221.5	12,417.2	0.00	0.00	0.00
19,300.0	90.00	180.16	7,176.1	-2,495.09	-12,457.6	-1,221.7	12,516.8	0.00	0.00	0.00
19,400.0	90.00	180.16	7,176.1	-2,495.09	-12,557.6	-1,222.0	12,616.5	0.00	0.00	0.00
19,500.0	90.00	180.16	7,176.1	-2,495.08	-12,657.6	-1,222.3	12,716.1	0.00	0.00	0.00
19,600.0	90.00	180.16	7,176.1	-2,495.07	-12,757.6	-1,222.6	12,815.7	0.00	0.00	0.00
19,700.0	90.00	180.16	7,176.1	-2,495.07	-12,857.6	-1,222.9	12,915.4	0.00	0.00	0.00
19,800.0	90.00	180.16	7,176.1	-2,495.06	-12,957.6	-1,223.1	13,015.0	0.00	0.00	0.00
19,900.0	90.00	180.16	7,176.1	-2,495.05	-13,057.6	-1,223.4	13,114.6	0.00	0.00	0.00
20,000.0	90.00	180.16	7,176.0	-2,495.05	-13,157.6	-1,223.7	13,214.3	0.00	0.00	0.00
20,100.0	90.00	180.16	7,176.0	-2,495.04	-13,257.6	-1,224.0	13,313.9	0.00	0.00	0.00
20,200.0	90.00	180.16	7,176.0	-2,495.03	-13,357.6	-1,224.3	13,413.5	0.00	0.00	0.00
20,300.0	90.00	180.16	7,176.0	-2,495.03	-13,457.6	-1,224.5	13,513.2	0.00	0.00	0.00
20,400.0	90.00	180.16	7,176.0	-2,495.02	-13,557.6	-1,224.8	13,612.8	0.00	0.00	0.00
20,500.0	90.00	180.16	7,176.0	-2,495.01	-13,657.6	-1,225.1	13,712.4	0.00	0.00	0.00
20,600.0	90.00	180.16	7,176.0	-2,495.00	-13,757.6	-1,225.4	13,812.1	0.00	0.00	0.00
BHL - CS-SCOTT C4-1-13 (P3)										
20,635.2	90.00	180.16	7,176.0	-2,495.00	-13,792.8	-1,225.5	13,847.1	0.00	0.00	0.00

Targets										
Target Name	Dip Angle (°)	Dip Dir. (°)	TVD (usft)	+N/-S (usft)	+E/-W (usft)	Northing (usft)	Easting (usft)	Latitude	Longitude	
KOP - CS-SCOTT C4 - hit/miss target - plan hits target center - Shape - Point	0.00	0.00	6,603.0	-228.5	-1,187.0	1,403,247.26	3,215,100.74	40.437743	-104.727234	
LANDING PNT - CS-SCOTT C4 - hit/miss target - plan hits target center - Shape - Point	0.00	0.00	7,176.0	-801.5	-1,188.6	1,402,674.34	3,215,104.11	40.436170	-104.727240	
BHL - CS-SCOTT C4-1-13 - hit/miss target - plan hits target center - Shape - Point	0.00	0.00	7,176.0	-13,792.8	-1,225.5	1,389,683.63	3,215,181.12	40.400510	-104.727370	

Formations						
MD (usft)	TVD (usft)	Name	Lithology	Dip (°)	Dip Direction (°)	
3,717.3	3,651.0	PARKMAN				
4,505.5	4,416.0	SUSSEX				
4,954.7	4,852.0	SHANNON				
7,008.1	6,858.0	NIOBRARA				
7,434.0	7,138.0	FORT HAYS				
7,536.6	7,166.0	CODELL				

Database:	EDM 5000.1 Single User Db	Local Co-ordinate Reference:	Well CS-SCOTT C4-1-13
Company:	EXTRACTION OIL & GAS	TVD Reference:	KB-EST @ 4681.0usft (Original Well Elev)
Project:	WELD COUNTY, COLORADO (NAD 83)	MD Reference:	KB-EST @ 4681.0usft (Original Well Elev)
Site:	SW SE SEC 36 T6N R66W 6th P.M.	North Reference:	True
Well:	CS-SCOTT C4-1-13	Survey Calculation Method:	Minimum Curvature
Wellbore:	ORIGINAL WELLBORE		
Design:	PROPOSAL #3		

Plan Annotations

MD (usft)	TVD (usft)	Local Coordinates		Comment
		+N/-S (usft)	+E/-W (usft)	
1,000.0	1,000.0	0.0	0.0	START NUDGE (2°/100ft BUR)
1,696.6	1,689.7	-15.9	-82.8	EOB TO 13.93° INC
1,810.2	1,800.0	-21.1	-109.6	9 5/8" SURFACE CSG
6,017.2	5,883.3	-212.6	-1,104.2	END OF TANGENT
6,713.8	6,573.0	-228.5	-1,187.0	EOD TO VERTICAL
6,743.8	6,603.0	-228.5	-1,187.0	KOP (10°/100ft BUR)
7,643.8	7,176.0	-801.5	-1,188.6	LANDING PNT - CS-SCOTT C4-1-13
20,635.2	7,176.0	-13,792.8	-1,225.5	BHL - CS-SCOTT C4-1-13 (P3)