

EXTRACTION OIL & GAS

WELD COUNTY, COLORADO (NAD 83)

SW SE SEC 36 T6N R66W 6th P.M.

CS-SCOTT C2-1-13

ORIGINAL WELLBORE

29 November, 2016

Plan: PROPOSAL #3



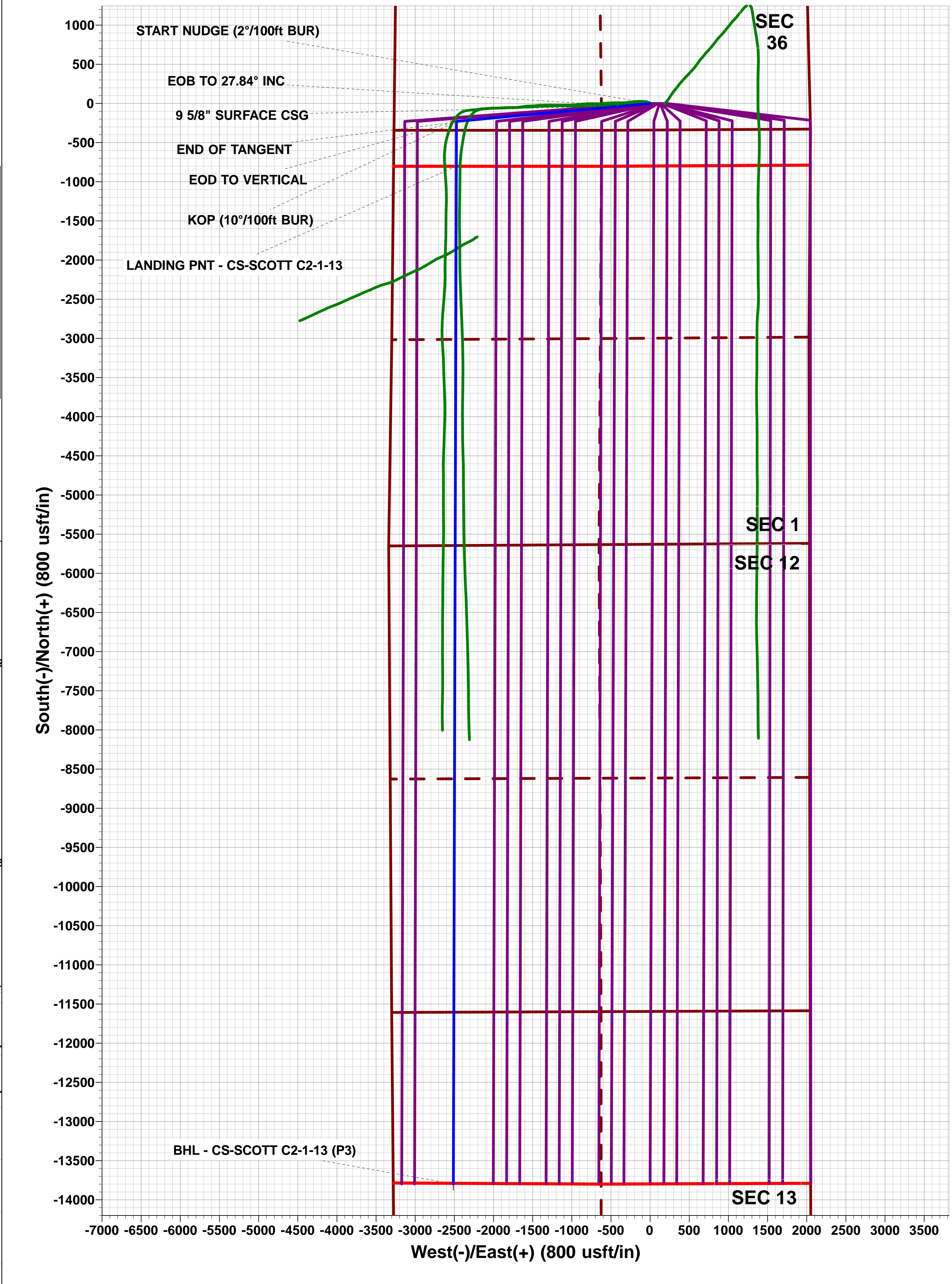
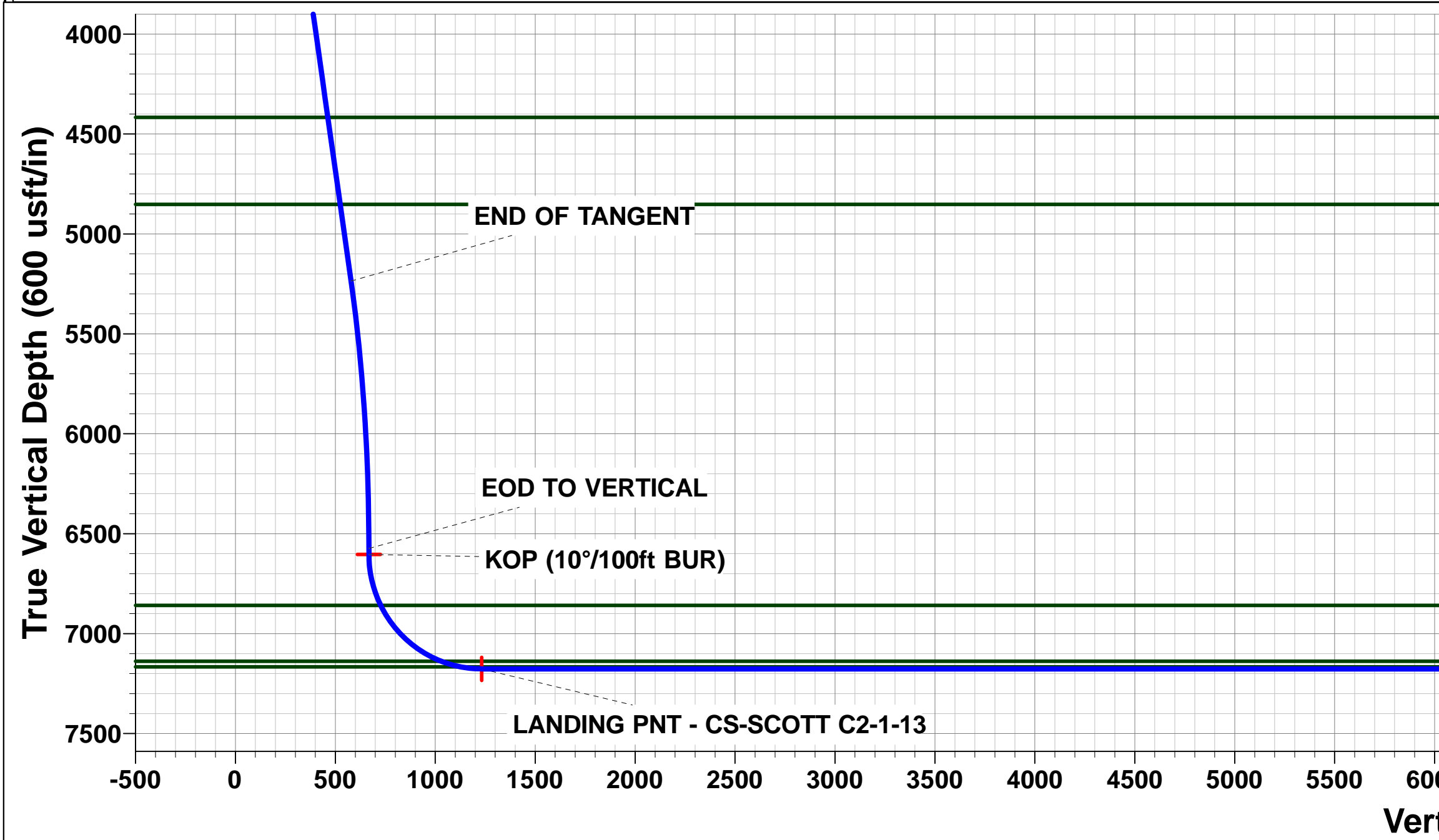
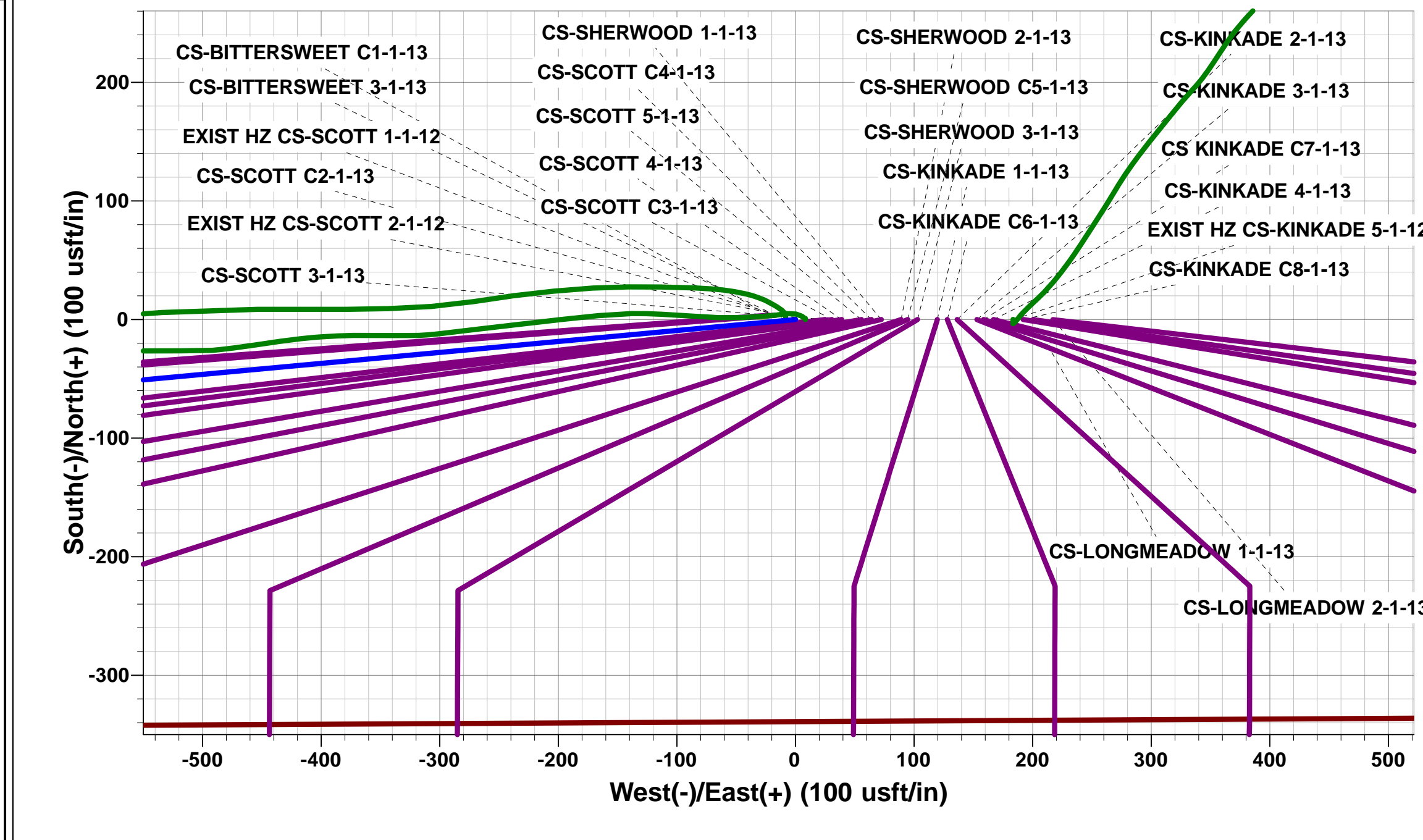
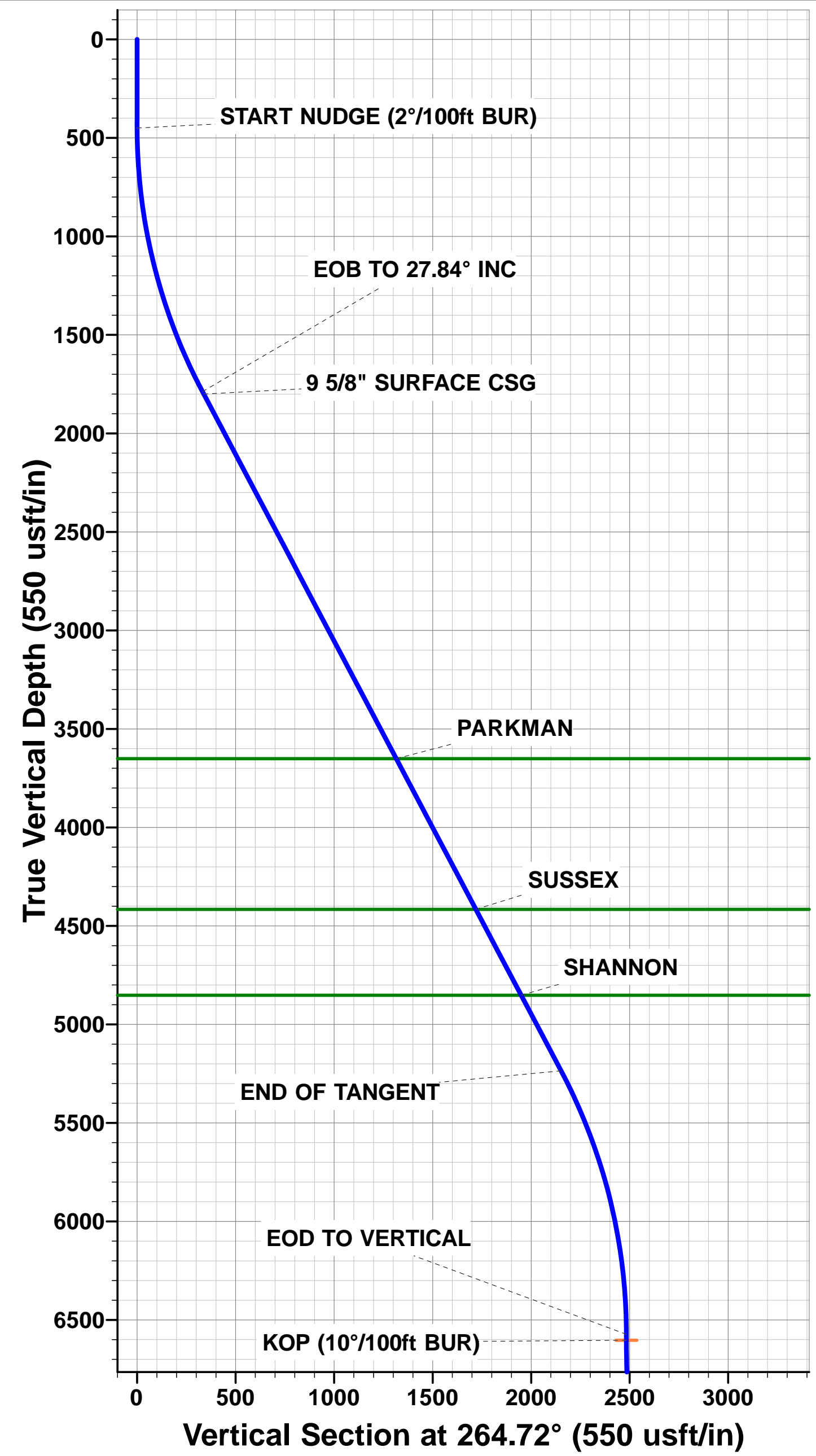


Project: WELD COUNTY, COLORADO (NAD 83)
Site: SW SE SEC 36 T6N R66W 6th P.M.
Well: CS-SCOTT C2-1-13
Wellbore: ORIGINAL WELLBORE
Design: PROPOSAL #3

ANNOTATIONS										
TVD	MD	Inc	Azi	+N/-S	+E/-W	VSec	Dep	Annotation		
450.0	450.0	0.00	0.00	0.0	0.0	0.0	0.0	START NUDGE (2°/100ft BUR)		
1787.7	1841.8	27.84	264.72	-30.5	-330.1	89.1	331.5	EOB TO 27.84° INC		
1800.0	1855.7	27.84	264.72	-31.1	-336.6	90.9	338.0	9 5/8" SURFACE CSG		
5235.3	5740.5	27.84	264.72	-197.9	-2142.9	578.6	2152.0	END OF TANGENT		
6573.0	7132.4	0.00	0.00	-228.4	-2473.0	667.7	2483.5	EOD TO VERTICAL		
6603.0	7162.4	0.00	0.00	-228.4	-2473.0	667.7	2483.5	KOP (10°/100ft BUR)		
7176.0	8062.4	90.00	180.17	-801.4	-2474.7	1231.7	3056.5	LANDING PNT - CS-SCOTT C2-1-13		
7176.0	21057.5	90.00	180.16	-13796.4	-2512.2	14023.2	16051.6	BHL - CS-SCOTT C2-1-13 (P3)		

PROPOSED LOCAL COORDINATES:
SHL: 341ft FSL & 2040ft FEL Sec 36
LANDING PNT: 460ft FNL & 800ft FWL Sec 1
BHL: 2193ft FNL & 768ft FWL Sec 13

WELLBORE TARGET DETAILS (LAT/LONG)					
Name	TVD	+N/-S	+E/-W	Latitude	Longitude
KOP - CS-SCOTT C2-1-13	6603.0	-228.4	-2473.0	40.437743	-104.732084
BHL - CS-SCOTT C2-1-13 (P3)	7176.0	-13796.4	-2512.2	40.400500	-104.732220
LANDING PNT - CS-SCOTT C2-1-13	7176.0	-801.4	-2474.7	40.436170	-104.732090



Planning Report



Database:	EDM 5000.1 Single User Db	Local Co-ordinate Reference:	Well CS-SCOTT C2-1-13
Company:	EXTRACTION OIL & GAS	TVD Reference:	KB-EST @ 4681.0usft (SAV 802)
Project:	WELD COUNTY, COLORADO (NAD 83)	MD Reference:	KB-EST @ 4681.0usft (SAV 802)
Site:	SW SE SEC 36 T6N R66W 6th P.M.	North Reference:	True
Well:	CS-SCOTT C2-1-13	Survey Calculation Method:	Minimum Curvature
Wellbore:	ORIGINAL WELLBORE		
Design:	PROPOSAL #3		

Project	WELD COUNTY, COLORADO (NAD 83)		
Map System:	US State Plane 1983	System Datum:	Mean Sea Level
Geo Datum:	North American Datum 1983		
Map Zone:	Colorado Northern Zone		Using geodetic scale factor

Site	SW SE SEC 36 T6N R66W 6th P.M.		
Site Position:		Northing:	1,403,485.52 usft
From:	Lat/Long	Easting:	3,216,213.28 usft
Position Uncertainty:	0.0 usft	Slot Radius:	1.10000ft
		Latitude:	40.438370
		Longitude:	-104.723230
		Grid Convergence:	0.50 °

Well	CS-SCOTT C2-1-13		
Well Position	+N/-S	0.0 usft	Northing: 1,403,485.58 usft
	+E/-W	8.4 usft	Easting: 3,216,221.63 usft
Position Uncertainty	0.0 usft	Wellhead Elevation:	usft
		Latitude:	40.438370
		Longitude:	-104.723200
		Ground Level:	4,665.0 usft

Wellbore	ORIGINAL WELLBORE				
Magnetics	Model Name	Sample Date	Declination (°)	Dip Angle (°)	Field Strength (nT)
	IGRF2015	23/06/2015	8.40	66.94	52,644

Design	PROPOSAL #3			
Audit Notes:				
Version:	Phase:	PROTOTYPE	Tie On Depth:	0.0
Vertical Section:	Depth From (TVD) (usft)	+N/-S (usft)	+E/-W (usft)	Direction (°)
	0.0	0.0	0.0	190.32

Plan Sections											
MD (usft)	Inc (°)	Azi (°)	Vertical Depth	SS (usft)	+N/-S (usft)	+E/-W (usft)	Dogleg Rate (°/100usft)	Build Rate (°/100usft)	Turn Rate (°/100usft)	TFO (°)	Target
0.0	0.00	0.00	0.0	-4,681.0	0.0	0.0	0.00	0.00	0.00	0.00	
450.0	0.00	0.00	450.0	-4,231.0	0.0	0.0	0.00	0.00	0.00	0.00	
1,841.8	27.84	264.72	1,787.7	-2,893.3	-30.5	-330.1	2.00	2.00	0.00	264.72	
5,740.5	27.84	264.72	5,235.3	554.3	-197.9	-2,142.9	0.00	0.00	0.00	0.00	
7,132.4	0.00	0.00	6,573.0	1,892.0	-228.4	-2,473.0	2.00	-2.00	0.00	180.00	
7,162.4	0.00	0.00	6,603.0	1,922.0	-228.4	-2,473.0	0.00	0.00	0.00	0.00	KOP - CS-SCOTT C
8,062.4	90.00	180.17	7,176.0	2,495.0	-801.4	-2,474.7	10.00	10.00	-19.98	180.17	LANDING PNT - CS
21,057.5	90.00	180.16	7,176.0	2,495.0	-13,796.4	-2,512.2	0.00	0.00	0.00	-62.51	BHL - CS-SCOTT C

Planning Report



Database:	EDM 5000.1 Single User Db	Local Co-ordinate Reference:	Well CS-SCOTT C2-1-13
Company:	EXTRACTION OIL & GAS	TVD Reference:	KB-EST @ 4681.0usft (SAV 802)
Project:	WELD COUNTY, COLORADO (NAD 83)	MD Reference:	KB-EST @ 4681.0usft (SAV 802)
Site:	SW SE SEC 36 T6N R66W 6th P.M.	North Reference:	True
Well:	CS-SCOTT C2-1-13	Survey Calculation Method:	Minimum Curvature
Wellbore:	ORIGINAL WELLBORE		
Design:	PROPOSAL #3		

Planned Survey

MD (usft)	Inc (°)	Azi (°)	TVD (usft)	SS (usft)	+N/-S (usft)	+E/-W (usft)	Vertical Section (usft)	Dogleg Rate (°/100usft)	Build Rate (°/100usft)	Turn Rate (°/100usft)
0.0	0.00	0.00	0.0	4,681.00	0.0	0.0	0.0	0.00	0.00	0.00
100.0	0.00	0.00	100.0	4,581.00	0.0	0.0	0.0	0.00	0.00	0.00
200.0	0.00	0.00	200.0	4,481.00	0.0	0.0	0.0	0.00	0.00	0.00
300.0	0.00	0.00	300.0	4,381.00	0.0	0.0	0.0	0.00	0.00	0.00
400.0	0.00	0.00	400.0	4,281.00	0.0	0.0	0.0	0.00	0.00	0.00
START NUDGE (2°/100ft BUR)										
450.0	0.00	0.00	450.0	4,231.00	0.0	0.0	0.0	0.00	0.00	0.00
500.0	1.00	264.72	500.0	4,181.00	0.0	-0.4	0.1	2.00	2.00	0.00
600.0	3.00	264.72	599.9	4,081.07	-0.4	-3.9	1.1	2.00	2.00	0.00
700.0	5.00	264.72	699.7	3,981.32	-1.0	-10.9	2.9	2.00	2.00	0.00
800.0	7.00	264.72	799.1	3,881.87	-2.0	-21.3	5.7	2.00	2.00	0.00
900.0	9.00	264.72	898.2	3,782.85	-3.2	-35.1	9.5	2.00	2.00	0.00
1,000.0	11.00	264.72	996.6	3,684.37	-4.8	-52.4	14.2	2.00	2.00	0.00
1,100.0	13.00	264.72	1,094.4	3,586.56	-6.8	-73.1	19.7	2.00	2.00	0.00
1,200.0	15.00	264.72	1,191.5	3,489.54	-9.0	-97.2	26.2	2.00	2.00	0.00
1,300.0	17.00	264.72	1,287.6	3,393.42	-11.5	-124.6	33.7	2.00	2.00	0.00
1,400.0	19.00	264.72	1,382.7	3,298.32	-14.4	-155.4	42.0	2.00	2.00	0.00
1,500.0	21.00	264.72	1,476.6	3,204.35	-17.5	-189.5	51.2	2.00	2.00	0.00
1,600.0	23.00	264.72	1,569.4	3,111.64	-20.9	-226.8	61.2	2.00	2.00	0.00
1,700.0	25.00	264.72	1,660.7	3,020.29	-24.7	-267.3	72.2	2.00	2.00	0.00
1,800.0	27.00	264.72	1,750.6	2,930.41	-28.7	-310.9	84.0	2.00	2.00	0.00
EOB TO 27.84° INC										
1,841.8	27.84	264.72	1,787.7	2,893.28	-30.5	-330.1	89.1	2.00	2.00	0.00
9 5/8" SURFACE CSG										
1,855.7	27.84	264.72	1,800.0	2,881.00	-31.1	-336.6	90.9	0.00	0.00	0.00
1,900.0	27.84	264.72	1,839.2	2,841.84	-33.0	-357.1	96.4	0.00	0.00	0.00
2,000.0	27.84	264.72	1,927.6	2,753.42	-37.3	-403.6	109.0	0.00	0.00	0.00
2,100.0	27.84	264.72	2,016.0	2,664.99	-41.6	-450.1	121.5	0.00	0.00	0.00
2,200.0	27.84	264.72	2,104.4	2,576.56	-45.9	-496.6	134.1	0.00	0.00	0.00
2,300.0	27.84	264.72	2,192.9	2,488.13	-50.2	-543.1	146.7	0.00	0.00	0.00
2,400.0	27.84	264.72	2,281.3	2,399.70	-54.5	-589.6	159.2	0.00	0.00	0.00
2,500.0	27.84	264.72	2,369.7	2,311.27	-58.8	-636.1	171.8	0.00	0.00	0.00
2,600.0	27.84	264.72	2,458.2	2,222.85	-63.0	-682.6	184.3	0.00	0.00	0.00
2,700.0	27.84	264.72	2,546.6	2,134.42	-67.3	-729.1	196.9	0.00	0.00	0.00
2,800.0	27.84	264.72	2,635.0	2,045.99	-71.6	-775.6	209.4	0.00	0.00	0.00
2,900.0	27.84	264.72	2,723.4	1,957.56	-75.9	-822.1	222.0	0.00	0.00	0.00
3,000.0	27.84	264.72	2,811.9	1,869.13	-80.2	-868.6	234.5	0.00	0.00	0.00
3,100.0	27.84	264.72	2,900.3	1,780.70	-84.5	-915.1	247.1	0.00	0.00	0.00
3,200.0	27.84	264.72	2,988.7	1,692.28	-88.8	-961.6	259.6	0.00	0.00	0.00
3,300.0	27.84	264.72	3,077.2	1,603.85	-93.1	-1,008.1	272.2	0.00	0.00	0.00
3,400.0	27.84	264.72	3,165.6	1,515.42	-97.4	-1,054.6	284.8	0.00	0.00	0.00
3,500.0	27.84	264.72	3,254.0	1,426.99	-101.7	-1,101.1	297.3	0.00	0.00	0.00
3,600.0	27.84	264.72	3,342.4	1,338.56	-106.0	-1,147.6	309.9	0.00	0.00	0.00
3,700.0	27.84	264.72	3,430.9	1,250.14	-110.3	-1,194.1	322.4	0.00	0.00	0.00
3,800.0	27.84	264.72	3,519.3	1,161.71	-114.6	-1,240.6	335.0	0.00	0.00	0.00
3,900.0	27.84	264.72	3,607.7	1,073.28	-118.9	-1,287.1	347.5	0.00	0.00	0.00
PARKMAN										
3,948.9	27.84	264.72	3,651.0	1,030.00	-121.0	-1,309.9	353.7	0.00	0.00	0.00
4,000.0	27.84	264.72	3,696.1	984.85	-123.2	-1,333.6	360.1	0.00	0.00	0.00
4,100.0	27.84	264.72	3,784.6	896.42	-127.5	-1,380.1	372.6	0.00	0.00	0.00
4,200.0	27.84	264.72	3,873.0	807.99	-131.8	-1,426.6	385.2	0.00	0.00	0.00
4,300.0	27.84	264.72	3,961.4	719.57	-136.1	-1,473.1	397.8	0.00	0.00	0.00
4,400.0	27.84	264.72	4,049.9	631.14	-140.3	-1,519.6	410.3	0.00	0.00	0.00
4,500.0	27.84	264.72	4,138.3	542.71	-144.6	-1,566.1	422.9	0.00	0.00	0.00

Database:	EDM 5000.1 Single User Db	Local Co-ordinate Reference:	Well CS-SCOTT C2-1-13
Company:	EXTRACTION OIL & GAS	TVD Reference:	KB-EST @ 4681.0usft (SAV 802)
Project:	WELD COUNTY, COLORADO (NAD 83)	MD Reference:	KB-EST @ 4681.0usft (SAV 802)
Site:	SW SE SEC 36 T6N R66W 6th P.M.	North Reference:	True
Well:	CS-SCOTT C2-1-13	Survey Calculation Method:	Minimum Curvature
Wellbore:	ORIGINAL WELLBORE		
Design:	PROPOSAL #3		

Planned Survey

MD (usft)	Inc (°)	Azi (°)	TVD (usft)	SS (usft)	+N/-S (usft)	+E/-W (usft)	Vertical Section (usft)	Dogleg Rate (°/100usft)	Build Rate (°/100usft)	Turn Rate (°/100usft)
4,600.0	27.84	264.72	4,226.7	454.28	-148.9	-1,612.6	435.4	0.00	0.00	0.00
4,700.0	27.84	264.72	4,315.1	365.85	-153.2	-1,659.1	448.0	0.00	0.00	0.00
4,800.0	27.84	264.72	4,403.6	277.42	-157.5	-1,705.6	460.5	0.00	0.00	0.00
SUSSEX										
4,814.1	27.84	264.72	4,416.0	265.00	-158.1	-1,712.1	462.3	0.00	0.00	0.00
4,900.0	27.84	264.72	4,492.0	189.00	-161.8	-1,752.1	473.1	0.00	0.00	0.00
5,000.0	27.84	264.72	4,580.4	100.57	-166.1	-1,798.6	485.6	0.00	0.00	0.00
5,100.0	27.84	264.72	4,668.9	12.14	-170.4	-1,845.1	498.2	0.00	0.00	0.00
5,200.0	27.84	264.72	4,757.3	-76.29	-174.7	-1,891.6	510.7	0.00	0.00	0.00
5,300.0	27.84	264.72	4,845.7	-164.72	-179.0	-1,938.1	523.3	0.00	0.00	0.00
SHANNON										
5,307.1	27.84	264.72	4,852.0	-171.00	-179.3	-1,941.4	524.2	0.00	0.00	0.00
5,400.0	27.84	264.72	4,934.1	-253.14	-183.3	-1,984.6	535.9	0.00	0.00	0.00
5,500.0	27.84	264.72	5,022.6	-341.57	-187.6	-2,031.1	548.4	0.00	0.00	0.00
5,600.0	27.84	264.72	5,111.0	-430.00	-191.9	-2,077.6	561.0	0.00	0.00	0.00
5,700.0	27.84	264.72	5,199.4	-518.43	-196.2	-2,124.0	573.5	0.00	0.00	0.00
END OF TANGENT										
5,740.5	27.84	264.72	5,235.3	-554.28	-197.9	-2,142.9	578.6	0.00	0.00	0.00
5,800.0	26.65	264.72	5,288.1	-607.14	-200.4	-2,170.0	585.9	2.00	-2.00	0.00
5,900.0	24.65	264.72	5,378.3	-697.28	-204.4	-2,213.1	597.6	2.00	-2.00	0.00
6,000.0	22.65	264.72	5,469.9	-788.88	-208.1	-2,253.0	608.3	2.00	-2.00	0.00
6,100.0	20.65	264.72	5,562.8	-881.83	-211.5	-2,289.8	618.3	2.00	-2.00	0.00
6,200.0	18.65	264.72	5,657.0	-976.00	-214.6	-2,323.2	627.3	2.00	-2.00	0.00
6,300.0	16.65	264.72	5,752.3	-1,071.29	-217.4	-2,353.4	635.5	2.00	-2.00	0.00
6,400.0	14.65	264.72	5,848.6	-1,167.58	-219.8	-2,380.3	642.7	2.00	-2.00	0.00
6,500.0	12.65	264.72	5,945.7	-1,264.75	-222.0	-2,403.8	649.0	2.00	-2.00	0.00
6,600.0	10.65	264.72	6,043.7	-1,362.68	-223.9	-2,423.9	654.5	2.00	-2.00	0.00
6,700.0	8.65	264.72	6,142.3	-1,461.27	-225.4	-2,440.6	659.0	2.00	-2.00	0.00
6,800.0	6.65	264.72	6,241.4	-1,560.37	-226.6	-2,453.8	662.6	2.00	-2.00	0.00
6,900.0	4.65	264.72	6,340.9	-1,659.88	-227.5	-2,463.6	665.2	2.00	-2.00	0.00
7,000.0	2.65	264.72	6,440.7	-1,759.67	-228.1	-2,470.0	666.9	2.00	-2.00	0.00
7,100.0	0.65	264.72	6,540.6	-1,859.63	-228.4	-2,472.8	667.7	2.00	-2.00	0.00
EOD TO VERTICAL										
7,132.4	0.00	0.00	6,573.0	-1,892.00	-228.4	-2,473.0	667.7	2.00	-2.00	0.00
KOP (10°/100ft BUR)										
7,162.4	0.00	0.00	6,603.0	-1,922.00	-228.4	-2,473.0	667.7	0.00	0.00	0.00
7,200.0	3.76	180.17	6,640.6	-1,959.60	-229.6	-2,473.0	669.0	10.00	10.00	0.00
7,300.0	13.76	180.17	6,739.3	-2,058.31	-244.8	-2,473.0	683.9	10.00	10.00	0.00
7,400.0	23.76	180.17	6,833.9	-2,152.87	-277.0	-2,473.1	715.5	10.00	10.00	0.00
NIOBRARA										
7,426.6	26.43	180.17	6,858.0	-2,177.00	-288.3	-2,473.2	726.7	10.00	10.00	0.00
7,500.0	33.76	180.17	6,921.4	-2,240.43	-325.0	-2,473.3	762.9	10.00	10.00	0.00
7,600.0	43.76	180.17	6,999.3	-2,318.30	-387.5	-2,473.5	824.4	10.00	10.00	0.00
7,700.0	53.76	180.17	7,065.1	-2,384.14	-462.6	-2,473.7	898.3	10.00	10.00	0.00
7,800.0	63.76	180.17	7,116.9	-2,435.94	-548.0	-2,474.0	982.4	10.00	10.00	0.00
FORT HAYS										
7,852.6	69.02	180.17	7,138.0	-2,457.00	-596.2	-2,474.1	1,029.8	10.00	10.00	0.00
7,900.0	73.76	180.17	7,153.1	-2,472.13	-641.1	-2,474.2	1,074.0	10.00	10.00	0.00
CODELL										
7,955.2	79.28	180.17	7,166.0	-2,485.00	-694.8	-2,474.4	1,126.9	10.00	10.00	0.00
8,000.0	83.76	180.17	7,172.6	-2,491.60	-739.1	-2,474.5	1,170.4	10.00	10.00	0.00
LANDING PNT - CS-SCOTT C2-1-13										
8,062.4	90.00	180.17	7,176.0	-2,495.00	-801.4	-2,474.7	1,231.7	10.00	10.00	0.00

Planning Report



Database:	EDM 5000.1 Single User Db	Local Co-ordinate Reference:	Well CS-SCOTT C2-1-13
Company:	EXTRACTION OIL & GAS	TVD Reference:	KB-EST @ 4681.0usft (SAV 802)
Project:	WELD COUNTY, COLORADO (NAD 83)	MD Reference:	KB-EST @ 4681.0usft (SAV 802)
Site:	SW SE SEC 36 T6N R66W 6th P.M.	North Reference:	True
Well:	CS-SCOTT C2-1-13	Survey Calculation Method:	Minimum Curvature
Wellbore:	ORIGINAL WELLBORE		
Design:	PROPOSAL #3		

Planned Survey										
MD (usft)	Inc (°)	Azi (°)	TVD (usft)	SS (usft)	+N/-S (usft)	+E/-W (usft)	Vertical Section (usft)	Dogleg Rate (°/100usft)	Build Rate (°/100usft)	Turn Rate (°/100usft)
8,100.0	90.00	180.17	7,176.0	-2,495.00	-839.0	-2,474.8	1,268.7	0.00	0.00	0.00
8,200.0	90.00	180.17	7,176.0	-2,495.01	-939.0	-2,475.1	1,367.2	0.00	0.00	0.00
8,300.0	90.00	180.17	7,176.0	-2,495.02	-1,039.0	-2,475.4	1,465.6	0.00	0.00	0.00
8,400.0	90.00	180.17	7,176.0	-2,495.02	-1,139.0	-2,475.7	1,564.1	0.00	0.00	0.00
8,500.0	90.00	180.17	7,176.0	-2,495.03	-1,239.0	-2,476.0	1,662.5	0.00	0.00	0.00
8,600.0	90.00	180.17	7,176.0	-2,495.04	-1,339.0	-2,476.3	1,760.9	0.00	0.00	0.00
8,700.0	90.00	180.17	7,176.0	-2,495.04	-1,439.0	-2,476.7	1,859.4	0.00	0.00	0.00
8,800.0	90.00	180.17	7,176.0	-2,495.05	-1,539.0	-2,477.0	1,957.8	0.00	0.00	0.00
8,900.0	90.00	180.17	7,176.1	-2,495.05	-1,639.0	-2,477.3	2,056.2	0.00	0.00	0.00
9,000.0	90.00	180.17	7,176.1	-2,495.06	-1,739.0	-2,477.6	2,154.7	0.00	0.00	0.00
9,100.0	90.00	180.17	7,176.1	-2,495.07	-1,839.0	-2,477.9	2,253.1	0.00	0.00	0.00
9,200.0	90.00	180.17	7,176.1	-2,495.07	-1,939.0	-2,478.2	2,351.5	0.00	0.00	0.00
9,300.0	90.00	180.17	7,176.1	-2,495.08	-2,039.0	-2,478.4	2,450.0	0.00	0.00	0.00
9,400.0	90.00	180.17	7,176.1	-2,495.08	-2,139.0	-2,478.7	2,548.4	0.00	0.00	0.00
9,500.0	90.00	180.17	7,176.1	-2,495.09	-2,239.0	-2,479.0	2,646.8	0.00	0.00	0.00
9,600.0	90.00	180.17	7,176.1	-2,495.09	-2,338.9	-2,479.3	2,745.3	0.00	0.00	0.00
9,700.0	90.00	180.17	7,176.1	-2,495.10	-2,438.9	-2,479.6	2,843.7	0.00	0.00	0.00
9,800.0	90.00	180.17	7,176.1	-2,495.10	-2,538.9	-2,479.9	2,942.2	0.00	0.00	0.00
9,900.0	90.00	180.17	7,176.1	-2,495.11	-2,638.9	-2,480.2	3,040.6	0.00	0.00	0.00
10,000.0	90.00	180.17	7,176.1	-2,495.11	-2,738.9	-2,480.5	3,139.0	0.00	0.00	0.00
10,100.0	90.00	180.17	7,176.1	-2,495.12	-2,838.9	-2,480.8	3,237.5	0.00	0.00	0.00
10,200.0	90.00	180.17	7,176.1	-2,495.12	-2,938.9	-2,481.1	3,335.9	0.00	0.00	0.00
10,300.0	90.00	180.17	7,176.1	-2,495.13	-3,038.9	-2,481.4	3,434.3	0.00	0.00	0.00
10,400.0	90.00	180.17	7,176.1	-2,495.13	-3,138.9	-2,481.7	3,532.8	0.00	0.00	0.00
10,500.0	90.00	180.17	7,176.1	-2,495.14	-3,238.9	-2,482.0	3,631.2	0.00	0.00	0.00
10,600.0	90.00	180.17	7,176.1	-2,495.14	-3,338.9	-2,482.3	3,729.6	0.00	0.00	0.00
10,700.0	90.00	180.17	7,176.1	-2,495.14	-3,438.9	-2,482.6	3,828.1	0.00	0.00	0.00
10,800.0	90.00	180.17	7,176.1	-2,495.15	-3,538.9	-2,482.9	3,926.5	0.00	0.00	0.00
10,900.0	90.00	180.17	7,176.2	-2,495.15	-3,638.9	-2,483.2	4,024.9	0.00	0.00	0.00
11,000.0	90.00	180.17	7,176.2	-2,495.16	-3,738.9	-2,483.5	4,123.4	0.00	0.00	0.00
11,100.0	90.00	180.17	7,176.2	-2,495.16	-3,838.9	-2,483.8	4,221.8	0.00	0.00	0.00
11,200.0	90.00	180.17	7,176.2	-2,495.16	-3,938.9	-2,484.1	4,320.2	0.00	0.00	0.00
11,300.0	90.00	180.17	7,176.2	-2,495.17	-4,038.9	-2,484.4	4,418.7	0.00	0.00	0.00
11,400.0	90.00	180.17	7,176.2	-2,495.17	-4,138.9	-2,484.7	4,517.1	0.00	0.00	0.00
11,500.0	90.00	180.17	7,176.2	-2,495.17	-4,238.9	-2,485.0	4,615.5	0.00	0.00	0.00
11,600.0	90.00	180.17	7,176.2	-2,495.18	-4,338.9	-2,485.3	4,714.0	0.00	0.00	0.00
11,700.0	90.00	180.17	7,176.2	-2,495.18	-4,438.9	-2,485.6	4,812.4	0.00	0.00	0.00
11,800.0	90.00	180.17	7,176.2	-2,495.18	-4,538.9	-2,485.9	4,910.8	0.00	0.00	0.00
11,900.0	90.00	180.17	7,176.2	-2,495.19	-4,638.9	-2,486.2	5,009.3	0.00	0.00	0.00
12,000.0	90.00	180.17	7,176.2	-2,495.19	-4,738.9	-2,486.5	5,107.7	0.00	0.00	0.00
12,100.0	90.00	180.17	7,176.2	-2,495.19	-4,838.9	-2,486.8	5,206.2	0.00	0.00	0.00
12,200.0	90.00	180.17	7,176.2	-2,495.19	-4,938.9	-2,487.0	5,304.6	0.00	0.00	0.00
12,300.0	90.00	180.17	7,176.2	-2,495.20	-5,038.9	-2,487.3	5,403.0	0.00	0.00	0.00
12,400.0	90.00	180.17	7,176.2	-2,495.20	-5,138.9	-2,487.6	5,501.5	0.00	0.00	0.00
12,500.0	90.00	180.17	7,176.2	-2,495.20	-5,238.9	-2,487.9	5,599.9	0.00	0.00	0.00
12,600.0	90.00	180.17	7,176.2	-2,495.20	-5,338.9	-2,488.2	5,698.3	0.00	0.00	0.00
12,700.0	90.00	180.17	7,176.2	-2,495.21	-5,438.9	-2,488.5	5,796.8	0.00	0.00	0.00
12,800.0	90.00	180.17	7,176.2	-2,495.21	-5,538.9	-2,488.8	5,895.2	0.00	0.00	0.00
12,900.0	90.00	180.17	7,176.2	-2,495.21	-5,638.9	-2,489.1	5,993.6	0.00	0.00	0.00
13,000.0	90.00	180.17	7,176.2	-2,495.21	-5,738.9	-2,489.4	6,092.1	0.00	0.00	0.00
13,100.0	90.00	180.17	7,176.2	-2,495.21	-5,838.9	-2,489.7	6,190.5	0.00	0.00	0.00
13,200.0	90.00	180.17	7,176.2	-2,495.21	-5,938.9	-2,490.0	6,288.9	0.00	0.00	0.00
13,300.0	90.00	180.17	7,176.2	-2,495.22	-6,038.9	-2,490.3	6,387.4	0.00	0.00	0.00
13,400.0	90.00	180.17	7,176.2	-2,495.22	-6,138.9	-2,490.6	6,485.8	0.00	0.00	0.00

Planning Report



Database:	EDM 5000.1 Single User Db	Local Co-ordinate Reference:	Well CS-SCOTT C2-1-13
Company:	EXTRACTION OIL & GAS	TVD Reference:	KB-EST @ 4681.0usft (SAV 802)
Project:	WELD COUNTY, COLORADO (NAD 83)	MD Reference:	KB-EST @ 4681.0usft (SAV 802)
Site:	SW SE SEC 36 T6N R66W 6th P.M.	North Reference:	True
Well:	CS-SCOTT C2-1-13	Survey Calculation Method:	Minimum Curvature
Wellbore:	ORIGINAL WELLBORE		
Design:	PROPOSAL #3		

Planned Survey										
MD (usft)	Inc (°)	Azi (°)	TVD (usft)	SS (usft)	+N/-S (usft)	+E/-W (usft)	Vertical Section (usft)	Dogleg Rate (°/100usft)	Build Rate (°/100usft)	Turn Rate (°/100usft)
13,500.0	90.00	180.17	7,176.2	-2,495.22	-6,238.9	-2,490.8	6,584.2	0.00	0.00	0.00
13,600.0	90.00	180.17	7,176.2	-2,495.22	-6,338.9	-2,491.1	6,682.7	0.00	0.00	0.00
13,700.0	90.00	180.17	7,176.2	-2,495.22	-6,438.9	-2,491.4	6,781.1	0.00	0.00	0.00
13,800.0	90.00	180.17	7,176.2	-2,495.22	-6,538.9	-2,491.7	6,879.5	0.00	0.00	0.00
13,900.0	90.00	180.17	7,176.2	-2,495.22	-6,638.9	-2,492.0	6,978.0	0.00	0.00	0.00
14,000.0	90.00	180.17	7,176.2	-2,495.22	-6,738.9	-2,492.3	7,076.4	0.00	0.00	0.00
14,100.0	90.00	180.17	7,176.2	-2,495.22	-6,838.9	-2,492.6	7,174.8	0.00	0.00	0.00
14,200.0	90.00	180.17	7,176.2	-2,495.22	-6,938.9	-2,492.9	7,273.3	0.00	0.00	0.00
14,300.0	90.00	180.17	7,176.2	-2,495.22	-7,038.9	-2,493.2	7,371.7	0.00	0.00	0.00
14,400.0	90.00	180.17	7,176.2	-2,495.22	-7,138.9	-2,493.5	7,470.1	0.00	0.00	0.00
14,500.0	90.00	180.17	7,176.2	-2,495.22	-7,238.9	-2,493.7	7,568.6	0.00	0.00	0.00
14,600.0	90.00	180.17	7,176.2	-2,495.22	-7,338.9	-2,494.0	7,667.0	0.00	0.00	0.00
14,700.0	90.00	180.17	7,176.2	-2,495.22	-7,438.9	-2,494.3	7,765.4	0.00	0.00	0.00
14,800.0	90.00	180.17	7,176.2	-2,495.22	-7,538.9	-2,494.6	7,863.9	0.00	0.00	0.00
14,900.0	90.00	180.16	7,176.2	-2,495.22	-7,638.9	-2,494.9	7,962.3	0.00	0.00	0.00
15,000.0	90.00	180.16	7,176.2	-2,495.22	-7,738.9	-2,495.2	8,060.7	0.00	0.00	0.00
15,100.0	90.00	180.16	7,176.2	-2,495.22	-7,838.9	-2,495.5	8,159.2	0.00	0.00	0.00
15,200.0	90.00	180.16	7,176.2	-2,495.22	-7,938.9	-2,495.8	8,257.6	0.00	0.00	0.00
15,300.0	90.00	180.16	7,176.2	-2,495.22	-8,038.9	-2,496.0	8,356.0	0.00	0.00	0.00
15,400.0	90.00	180.16	7,176.2	-2,495.22	-8,138.9	-2,496.3	8,454.5	0.00	0.00	0.00
15,500.0	90.00	180.16	7,176.2	-2,495.22	-8,238.9	-2,496.6	8,552.9	0.00	0.00	0.00
15,600.0	90.00	180.16	7,176.2	-2,495.22	-8,338.9	-2,496.9	8,651.3	0.00	0.00	0.00
15,700.0	90.00	180.16	7,176.2	-2,495.22	-8,438.9	-2,497.2	8,749.8	0.00	0.00	0.00
15,800.0	90.00	180.16	7,176.2	-2,495.22	-8,538.9	-2,497.5	8,848.2	0.00	0.00	0.00
15,900.0	90.00	180.16	7,176.2	-2,495.21	-8,638.9	-2,497.8	8,946.6	0.00	0.00	0.00
16,000.0	90.00	180.16	7,176.2	-2,495.21	-8,738.9	-2,498.0	9,045.1	0.00	0.00	0.00
16,100.0	90.00	180.16	7,176.2	-2,495.21	-8,838.9	-2,498.3	9,143.5	0.00	0.00	0.00
16,200.0	90.00	180.16	7,176.2	-2,495.21	-8,938.9	-2,498.6	9,241.9	0.00	0.00	0.00
16,300.0	90.00	180.16	7,176.2	-2,495.21	-9,038.9	-2,498.9	9,340.4	0.00	0.00	0.00
16,400.0	90.00	180.16	7,176.2	-2,495.21	-9,138.9	-2,499.2	9,438.8	0.00	0.00	0.00
16,500.0	90.00	180.16	7,176.2	-2,495.20	-9,238.9	-2,499.5	9,537.2	0.00	0.00	0.00
16,600.0	90.00	180.16	7,176.2	-2,495.20	-9,338.9	-2,499.8	9,635.7	0.00	0.00	0.00
16,700.0	90.00	180.16	7,176.2	-2,495.20	-9,438.9	-2,500.0	9,734.1	0.00	0.00	0.00
16,800.0	90.00	180.16	7,176.2	-2,495.20	-9,538.9	-2,500.3	9,832.5	0.00	0.00	0.00
16,900.0	90.00	180.16	7,176.2	-2,495.19	-9,638.9	-2,500.6	9,931.0	0.00	0.00	0.00
17,000.0	90.00	180.16	7,176.2	-2,495.19	-9,738.9	-2,500.9	10,029.4	0.00	0.00	0.00
17,100.0	90.00	180.16	7,176.2	-2,495.19	-9,838.9	-2,501.2	10,127.8	0.00	0.00	0.00
17,200.0	90.00	180.16	7,176.2	-2,495.19	-9,938.9	-2,501.5	10,226.3	0.00	0.00	0.00
17,300.0	90.00	180.16	7,176.2	-2,495.18	-10,038.9	-2,501.7	10,324.7	0.00	0.00	0.00
17,400.0	90.00	180.16	7,176.2	-2,495.18	-10,138.9	-2,502.0	10,423.1	0.00	0.00	0.00
17,500.0	90.00	180.16	7,176.2	-2,495.18	-10,238.9	-2,502.3	10,521.6	0.00	0.00	0.00
17,600.0	90.00	180.16	7,176.2	-2,495.17	-10,338.9	-2,502.6	10,620.0	0.00	0.00	0.00
17,700.0	90.00	180.16	7,176.2	-2,495.17	-10,438.9	-2,502.9	10,718.4	0.00	0.00	0.00
17,800.0	90.00	180.16	7,176.2	-2,495.17	-10,538.9	-2,503.2	10,816.9	0.00	0.00	0.00
17,900.0	90.00	180.16	7,176.2	-2,495.16	-10,638.9	-2,503.4	10,915.3	0.00	0.00	0.00
18,000.0	90.00	180.16	7,176.2	-2,495.16	-10,738.9	-2,503.7	11,013.7	0.00	0.00	0.00
18,100.0	90.00	180.16	7,176.2	-2,495.16	-10,838.9	-2,504.0	11,112.2	0.00	0.00	0.00
18,200.0	90.00	180.16	7,176.2	-2,495.15	-10,938.9	-2,504.3	11,210.6	0.00	0.00	0.00
18,300.0	90.00	180.16	7,176.1	-2,495.15	-11,038.9	-2,504.6	11,309.0	0.00	0.00	0.00
18,400.0	90.00	180.16	7,176.1	-2,495.15	-11,138.9	-2,504.8	11,407.4	0.00	0.00	0.00
18,500.0	90.00	180.16	7,176.1	-2,495.14	-11,238.9	-2,505.1	11,505.9	0.00	0.00	0.00
18,600.0	90.00	180.16	7,176.1	-2,495.14	-11,338.9	-2,505.4	11,604.3	0.00	0.00	0.00
18,700.0	90.00	180.16	7,176.1	-2,495.13	-11,438.9	-2,505.7	11,702.7	0.00	0.00	0.00
18,800.0	90.00	180.16	7,176.1	-2,495.13	-11,538.9	-2,506.0	11,801.2	0.00	0.00	0.00

Planning Report



Database:	EDM 5000.1 Single User Db	Local Co-ordinate Reference:	Well CS-SCOTT C2-1-13
Company:	EXTRACTION OIL & GAS	TVD Reference:	KB-EST @ 4681.0usft (SAV 802)
Project:	WELD COUNTY, COLORADO (NAD 83)	MD Reference:	KB-EST @ 4681.0usft (SAV 802)
Site:	SW SE SEC 36 T6N R66W 6th P.M.	North Reference:	True
Well:	CS-SCOTT C2-1-13	Survey Calculation Method:	Minimum Curvature
Wellbore:	ORIGINAL WELLBORE		
Design:	PROPOSAL #3		

Planned Survey

MD (usft)	Inc (°)	Azi (°)	TVD (usft)	SS (usft)	+N/-S (usft)	+E/-W (usft)	Vertical Section (usft)	Dogleg Rate (°/100usft)	Build Rate (°/100usft)	Turn Rate (°/100usft)
18,900.0	90.00	180.16	7,176.1	-2,495.12	-11,638.9	-2,506.3	11,899.6	0.00	0.00	0.00
19,000.0	90.00	180.16	7,176.1	-2,495.12	-11,738.9	-2,506.5	11,998.0	0.00	0.00	0.00
19,100.0	90.00	180.16	7,176.1	-2,495.11	-11,838.9	-2,506.8	12,096.5	0.00	0.00	0.00
19,200.0	90.00	180.16	7,176.1	-2,495.11	-11,938.9	-2,507.1	12,194.9	0.00	0.00	0.00
19,300.0	90.00	180.16	7,176.1	-2,495.10	-12,038.9	-2,507.4	12,293.3	0.00	0.00	0.00
19,400.0	90.00	180.16	7,176.1	-2,495.10	-12,138.9	-2,507.6	12,391.8	0.00	0.00	0.00
19,500.0	90.00	180.16	7,176.1	-2,495.09	-12,238.9	-2,507.9	12,490.2	0.00	0.00	0.00
19,600.0	90.00	180.16	7,176.1	-2,495.09	-12,338.9	-2,508.2	12,588.6	0.00	0.00	0.00
19,700.0	90.00	180.16	7,176.1	-2,495.08	-12,438.9	-2,508.5	12,687.1	0.00	0.00	0.00
19,800.0	90.00	180.16	7,176.1	-2,495.08	-12,538.9	-2,508.8	12,785.5	0.00	0.00	0.00
19,900.0	90.00	180.16	7,176.1	-2,495.07	-12,638.9	-2,509.0	12,883.9	0.00	0.00	0.00
20,000.0	90.00	180.16	7,176.1	-2,495.07	-12,738.9	-2,509.3	12,982.4	0.00	0.00	0.00
20,100.0	90.00	180.16	7,176.1	-2,495.06	-12,838.9	-2,509.6	13,080.8	0.00	0.00	0.00
20,200.0	90.00	180.16	7,176.1	-2,495.06	-12,938.9	-2,509.9	13,179.2	0.00	0.00	0.00
20,300.0	90.00	180.16	7,176.0	-2,495.05	-13,038.9	-2,510.1	13,277.7	0.00	0.00	0.00
20,400.0	90.00	180.16	7,176.0	-2,495.04	-13,138.9	-2,510.4	13,376.1	0.00	0.00	0.00
20,500.0	90.00	180.16	7,176.0	-2,495.04	-13,238.9	-2,510.7	13,474.5	0.00	0.00	0.00
20,600.0	90.00	180.16	7,176.0	-2,495.03	-13,338.9	-2,511.0	13,572.9	0.00	0.00	0.00
20,700.0	90.00	180.16	7,176.0	-2,495.02	-13,438.9	-2,511.3	13,671.4	0.00	0.00	0.00
20,800.0	90.00	180.16	7,176.0	-2,495.02	-13,538.9	-2,511.5	13,769.8	0.00	0.00	0.00
20,900.0	90.00	180.16	7,176.0	-2,495.01	-13,638.9	-2,511.8	13,868.2	0.00	0.00	0.00
21,000.0	90.00	180.16	7,176.0	-2,495.00	-13,738.9	-2,512.1	13,966.7	0.00	0.00	0.00
BHL - CS-SCOTT C2-1-13 (P3)										
21,057.5	90.00	180.16	7,176.0	-2,495.00	-13,796.4	-2,512.2	14,023.2	0.00	0.00	0.00

Targets

Target Name - hit/miss target - Shape	Dip Angle (°)	Dip Dir. (°)	TVD (usft)	+N/-S (usft)	+E/-W (usft)	Northing (usft)	Easting (usft)	Latitude	Longitude
LANDING PNT - CS- - plan hits target center - Point	0.00	0.00	7,176.0	-801.4	-2,474.7	1,402,662.61	3,213,754.11	40.436170	-104.732090
BHL - CS-SCOTT C2- - plan hits target center - Point	0.00	0.00	7,176.0	-13,796.4	-2,512.2	1,389,668.26	3,213,830.43	40.400500	-104.732220
KOP - CS-SCOTT C2 - plan hits target center - Point	0.00	0.00	6,603.0	-228.4	-2,473.0	1,403,235.54	3,213,750.82	40.437743	-104.732084

Database:	EDM 5000.1 Single User Db	Local Co-ordinate Reference:	Well CS-SCOTT C2-1-13
Company:	EXTRACTION OIL & GAS	TVD Reference:	KB-EST @ 4681.0usft (SAV 802)
Project:	WELD COUNTY, COLORADO (NAD 83)	MD Reference:	KB-EST @ 4681.0usft (SAV 802)
Site:	SW SE SEC 36 T6N R66W 6th P.M.	North Reference:	True
Well:	CS-SCOTT C2-1-13	Survey Calculation Method:	Minimum Curvature
Wellbore:	ORIGINAL WELLBORE		
Design:	PROPOSAL #3		

Formations					
MD (usft)	TVD (usft)	Name	Lithology	Dip (°)	Dip Direction (°)
3,948.9	3,651.0	PARKMAN			
4,814.1	4,416.0	SUSSEX			
5,307.1	4,852.0	SHANNON			
7,426.6	6,858.0	NIOBRARA			
7,852.6	7,138.0	FORT HAYS			
7,955.2	7,166.0	CODELL			

Plan Annotations				
MD (usft)	TVD (usft)	Local Coordinates		Comment
		+N/-S (usft)	+E/-W (usft)	
450.0	450.0	0.0	0.0	START NUDGE (2°/100ft BUR)
1,841.8	1,787.7	-30.5	-330.1	EOB TO 27.84° INC
1,855.7	1,800.0	-31.1	-336.6	9 5/8" SURFACE CSG
5,740.5	5,235.3	-197.9	-2,142.9	END OF TANGENT
7,132.4	6,573.0	-228.4	-2,473.0	EOD TO VERTICAL
7,162.4	6,603.0	-228.4	-2,473.0	KOP (10°/100ft BUR)
8,062.4	7,176.0	-801.4	-2,474.7	LANDING PNT - CS-SCOTT C2-1-13
21,057.5	7,176.0	-13,796.4	-2,512.2	BHL - CS-SCOTT C2-1-13 (P3)