



December 28, 2016

Mr. Matthew Lepore, Director
Colorado Oil & Gas Conservation Commission
1120 Lincoln Street, Ste. 801
Denver, Colorado 80203

RE: Rule 318.A.e.
CS-Bittersweet C1-1-13
CS-Bittersweet 3-1-13

Surface Location: SW/4 SE/4, Section 36, Township 6 North, Range 66 West, 6th PM, Weld County, CO

Dear Mr. Lepore,

Extraction Oil and Gas is planning to drill the captioned horizontal wells in accordance with the provision of COGCC Rule 318A.e.

The proposed wellbore spacing unit consists of:

Section 1-5N-66W: W/2W/2
Section 2-5N-66W: E/2E/2
Section 11-5N-66W: E/2E/2
Section 12-5N-66W: W/2W/2
Section 13-5N-66W: W/2 NW/4
Section 14-5N-66W: E/2NE/4

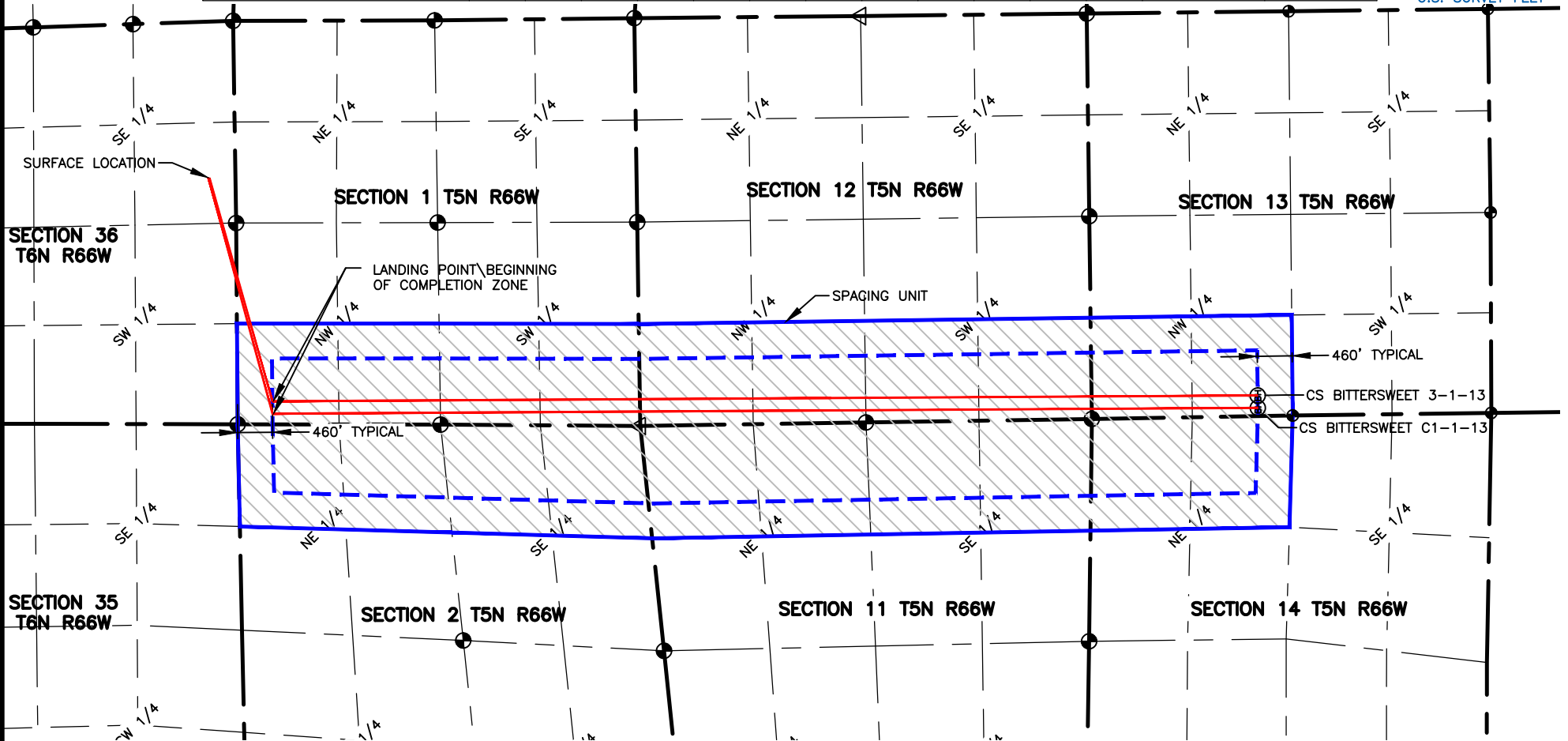
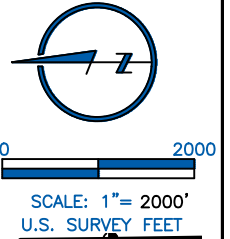
The spacing unit is an 800-acre wellbore spacing unit for the Niobrara and Codell formations. Extraction Oil and Gas hereby certifies to the Director that all Owners within the proposed spacing unit above were notified and 30 days have passed without objection. If you have any questions or issues regarding this permit, please contact Alyssa Andrews at (720) 481-2379.

Sincerely,

Alyssa Andrews
Regulatory Analyst
Extraction Oil & Gas, LLC

NAME: BITTERSWEET
 SPACING UNIT: E/2 E/2 SEC 2, W/2 W/2 SEC 1, E/2 E/2 SEC 11, W/2 W/2 SEC 12, E/2 NE/4 SEC 14, W/2 NW/4 SEC 13, T5N, R66W
 UNIT ACREAGE: 800

WELL NAME	SURFACE LOCATION				LANDING POINT\BEGIN HORIZONTAL COMPLETION ZONE				BOTTOM HOLE\END HORIZONTAL COMPLETION ZONE				COMPLETION ZONE BEARING	COMPLETION ZONE LENGTH
	DIST.	DIR.	DIST.	DIR.	DIST.	DIR.	DIST.	DIR.	DIST.	DIR.	DIST.	DIR.		
CS-BITTERSWEET C1-1-13	341'	FSL	2063'	FEL	460'	FNL	140'	FWL	2191'	FNL	108'	FWL	S00°20'09"E	12999.38'
CS-BITTERSWEET 3-1-13	341'	FSL	2056'	FEL	460'	FNL	303'	FWL	2192'	FNL	271'	FWL	S00°20'09"E	12999.00'



LAMP RYNEARSON
 & ASSOCIATES

4715 Innovation Drive 970.226.0342 | P
 Fort Collins, CO 80525 970.226.0879 | F
www.LRA-Inc.com

Planned Spacing Unit Exhibit
 C Street Directional Project
 Bittersweet Spacing Unit

LEGEND

- ALIQUOT CORNER
- ⊙ BOTTOM HOLE
- ⊠ COMPUTED FROM GLO RECORDS
- SECTION LINE
- QUARTER SECTION LINE
- SIXTEENTH LINE
- ◆ UNION COLONY CORNER
- △ COMPUTED ALIQUOT CORNER FROM MONUMENT ACCESSORIES

drawn by

KJW

date

11/14/16

cogcc id

430474

project - task number

0210012.00-502

book and page

surface - location

SW/4 SE/4 SEC 36 T6N R66W

path\filename P:\Engineering\0210012 MRI C Street\DRAWINGS\EXHIBITS\0210012PSUE-BITTERSWEET.dwg

P:\Engineering\0210012 MRI C Street\DRAWINGS\EXHIBITS\0210012PSUE-BITTERSWEET.dwg, 11/14/2016 10:26:15 AM, KELVIN WIESE, LAMP RYNEARSON & ASSOCIATES