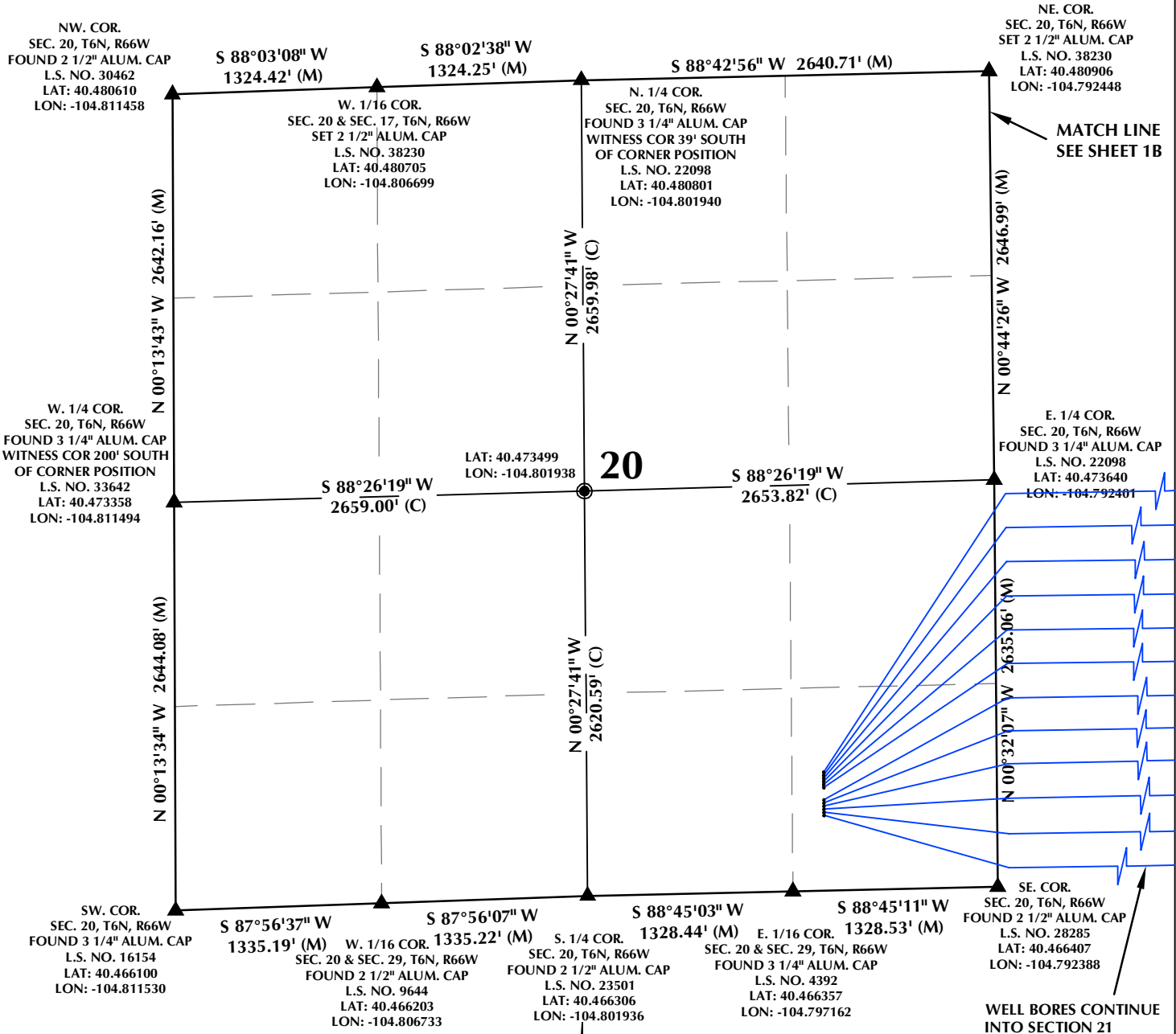
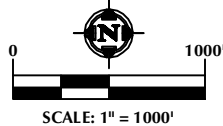


SECTION 20, T6N, R66W



NOTES:

- ▲ INDICATES SECTION CORNER
- INDICATES CALCULATED CORNER
- BASIS OF BEARING DERIVED FROM COLORADO COORDINATE SYSTEM OF 1983 NORTH ZONE.
- ALL MEASURED DISTANCES ARE GRID. COMBINED SCALE FACTOR: .99974122 CALCULATED FROM THE SE. CORNER OF SECTION 20, T6N, R66W
- WELL FOOTAGES ARE MEASURED AT RIGHT ANGLES TO THE SECTION LINES.



WELL PAD - HOOD-DOLES 37-20

MULTI-WELL PLAN
 HOOD 25N-22B-M, HOOD 25C-22-M, HOOD 11N-22C-M,
 HOOD 11N-22A-M, HOOD 11C-22-M, HOOD 23N-22C-M,
 HOOD 23C-22-M, HOOD 23N-22B-M, HOOD 14N-22A-M,
 HOOD 14N-22B-M, HOOD 36C-22-M & HOOD 36N-22C-M
 LOCATED IN SECTIONS 20, 21 & 22
 T6N, R66W, 6TH P.M.
 WELD COUNTY, COLORADO

SYNERGY
 RESOURCES CORPORATION
 1625 Broadway, Suite 300
 Denver, Colorado 80202



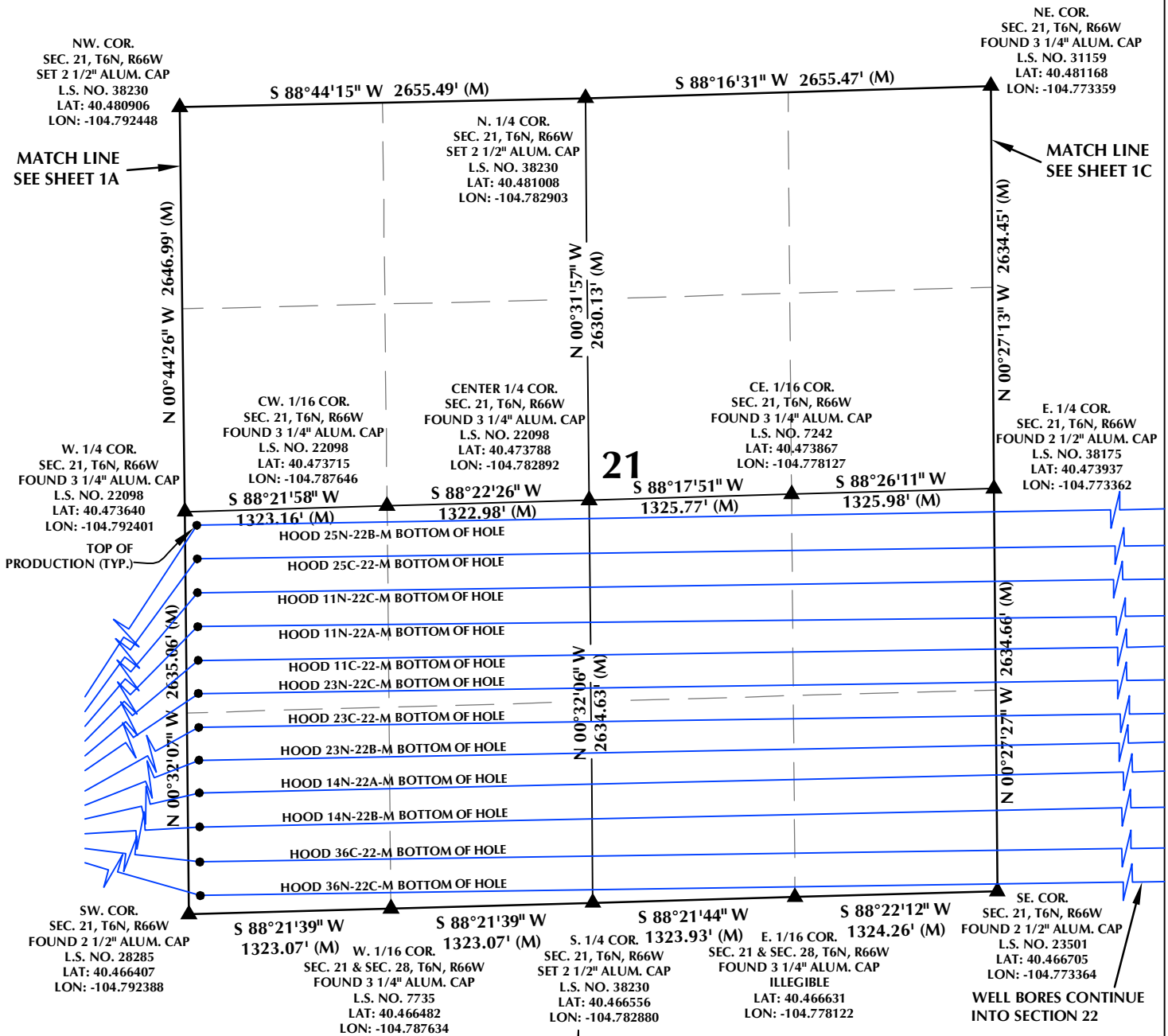
CONSULTING, LLC

SHERIDAN OFFICE
 1095 Saberton Avenue
 Sheridan, Wyoming 82801
 Phone 307-674-0609

LOVELAND OFFICE
 1635 Foxtrail Drive, Suite 204
 Loveland, Colorado 80538
 Phone 970-776-4331

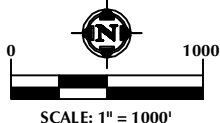
DRAFTED BY:	LMO	CHECKED BY:	JRS	SHEET NO:
DATE DRAFTED:	9/12/16	DATE SURVEYED:	7/7/16	1A
REVISED:	10/24/16	FILE NAME:	16-80	1A OF 3

SECTION 21, T6N, R66W



NOTES:

- ▲ INDICATES SECTION CORNER
- INDICATES CALCULATED CORNER
- BASIS OF BEARING DERIVED FROM COLORADO COORDINATE SYSTEM OF 1983 NORTH ZONE.
- ALL MEASURED DISTANCES ARE GRID. COMBINED SCALE FACTOR: .99974122 CALCULATED FROM THE SE. CORNER OF SECTION 20, T6N, R66W
- WELL FOOTAGES ARE MEASURED AT RIGHT ANGLES TO THE SECTION LINES.



WELL PAD - HOOD-DOLES 37-20

MULTI-WELL PLAN
 HOOD 25N-22B-M, HOOD 25C-22-M, HOOD 11N-22C-M,
 HOOD 11N-22A-M, HOOD 11C-22-M, HOOD 23N-22C-M,
 HOOD 23C-22-M, HOOD 23N-22B-M, HOOD 14N-22A-M,
 HOOD 14N-22B-M, HOOD 36C-22-M & HOOD 36N-22C-M
 LOCATED IN SECTIONS 20, 21 & 22
 T6N, R66W, 6TH P.M.
 WELD COUNTY, COLORADO

SYNERGY
 RESOURCES CORPORATION
 1625 Broadway, Suite 300
 Denver, Colorado 80202



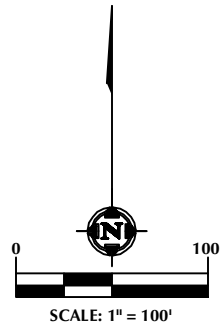
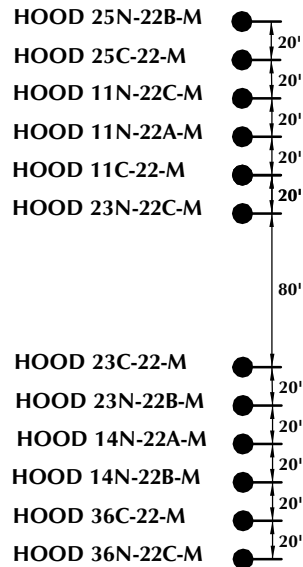
CONSULTING, LLC

SHERIDAN OFFICE
 1095 Saberton Avenue
 Sheridan, Wyoming 82801
 Phone 307-674-0609

LOVELAND OFFICE
 1635 Foxtrail Drive, Suite 204
 Loveland, Colorado 80538
 Phone 970-776-4331

DRAFTED BY:	LMO	CHECKED BY:	JRS	SHEET NO:
DATE DRAFTED:	9/12/16	DATE SURVEYED:	7/7/16	1B
REVISED:	10/24/16	FILE NAME:	16-80	1B OF 3

HOOD-DOLES 37-20



NOTES:

1. ▲ INDICATES SECTION CORNER
2. ● INDICATES CALCULATED CORNER
3. BASIS OF BEARING DERIVED FROM COLORADO COORDINATE SYSTEM OF 1983 NORTH ZONE.
4. ALL MEASURED DISTANCES ARE GRID.
COMBINED SCALE FACTOR: .99974122 CALCULATED FROM THE SE. CORNER OF SECTION 20, T6N, R66W
5. WELL FOOTAGES ARE MEASURED AT RIGHT ANGLES TO THE SECTION LINES.

WELL PAD - HOOD-DOLES 37-20

MULTI-WELL PLAN
HOOD 25N-22B-M, HOOD 25C-22-M, HOOD 11N-22C-M,
HOOD 11N-22A-M, HOOD 11C-22-M, HOOD 23N-22C-M,
HOOD 23C-22-M, HOOD 23N-22B-M, HOOD 14N-22A-M,
HOOD 14N-22B-M, HOOD 36C-22-M & HOOD 36N-22C-M
LOCATED IN SECTIONS 20, 21 & 22
T6N, R66W, 6TH P.M.
WELD COUNTY, COLORADO

 **SYNERGY**
RESOURCES CORPORATION
1625 Broadway, Suite 300
Denver, Colorado 80202



CONSULTING, LLC

SHERIDAN OFFICE
1095 Saberton Avenue
Sheridan, Wyoming 82801
Phone 307-674-0609

LOVELAND OFFICE
1635 Foxtrail Drive, Suite 204
Loveland, Colorado 80538
Phone 970-776-4331

DRAFTED BY:	LMO	CHECKED BY:	JRS	SHEET NO:
DATE DRAFTED:	9/12/16	DATE SURVEYED:	7/7/16	2
REVISED:	10/24/16	FILE NAME:	16-80	2 OF 3

HOOD-DOLES 37-20

WELL NOTES:

HOOD 25N-22B-M

SURFACE:

745' FSL & 1122' FEL
LATITUDE= 40.468466°
LONGITUDE= -104.796423°

TOP OF PRODUCTION:

2544' FSL & 75' FWL
LATITUDE= 40.473396°
LONGITUDE= -104.792131°

BOTTOM HOLE:

2520' FSL & 2612' FWL
LATITUDE= 40.473581°
LONGITUDE= -104.763972°

FORMATION:

NIOBRARA

HOOD 25C-22-M

SURFACE:

745' FSL & 1122' FEL
LATITUDE= 40.468411°
LONGITUDE= -104.796423°

TOP OF PRODUCTION:

2324' FSL & 75' FWL
LATITUDE= 40.472792°
LONGITUDE= -104.792130°

BOTTOM HOLE:

2278' FSL & 2611' FWL
LATITUDE= 40.472916°
LONGITUDE= -104.763976°

FORMATION:

CODELL

HOOD 11N-22C-M

SURFACE:

725' FSL & 1122' FEL
LATITUDE= 40.468356°
LONGITUDE= -104.796423°

TOP OF PRODUCTION:

2102' FSL & 75' FWL
LATITUDE= 40.472182°
LONGITUDE= -104.792129°

BOTTOM HOLE:

2058' FSL & 2611' FWL
LATITUDE= 40.472312°
LONGITUDE= -104.763978°

FORMATION:

NIOBRARA

HOOD 11N-22A-M

SURFACE:

705' FSL & 1122' FEL
LATITUDE= 40.468301°
LONGITUDE= -104.796422°

TOP OF PRODUCTION:

1880' FSL & 75' FWL
LATITUDE= 40.471573°
LONGITUDE= -104.792128°

BOTTOM HOLE:

1811' FSL & 2610' FWL
LATITUDE= 40.471634°
LONGITUDE= -104.763982°

FORMATION:

NIOBRARA

HOOD 11C-22-M

SURFACE:

685' FSL & 1122' FEL
LATITUDE= 40.468246°
LONGITUDE= -104.796422°

TOP OF PRODUCTION:

1659' FSL & 75' FWL
LATITUDE= 40.470966°
LONGITUDE= -104.792127°

BOTTOM HOLE:

1616' FSL & 2609' FWL
LATITUDE= 40.471099°
LONGITUDE= -104.763984°

FORMATION:

CODELL

HOOD 23N-22C-M

SURFACE:

665' FSL & 1122' FEL
LATITUDE= 40.468191°
LONGITUDE= -104.796422°

TOP OF PRODUCTION:

1442' FSL & 75' FWL
LATITUDE= 40.470370°
LONGITUDE= -104.792126°

BOTTOM HOLE:

1397' FSL & 2609' FWL
LATITUDE= 40.470498°
LONGITUDE= -104.763987°

FORMATION:

NIOBRARA

HOOD 23C-22-M

SURFACE:

585' FSL & 1122' FEL
LATITUDE= 40.467972°
LONGITUDE= -104.796422°

TOP OF PRODUCTION:

1221' FSL & 75' FWL
LATITUDE= 40.469764°
LONGITUDE= -104.792124°

BOTTOM HOLE:

1177' FSL & 2608' FWL
LATITUDE= 40.469894°
LONGITUDE= -104.763990°

FORMATION:

CODELL

HOOD 23N-22B-M

SURFACE:

565' FSL & 1122' FEL
LATITUDE= 40.467917°
LONGITUDE= -104.796422°

TOP OF PRODUCTION:

1006' FSL & 75' FWL
LATITUDE= 40.469173°
LONGITUDE= -104.792123°

BOTTOM HOLE:

996' FSL & 2607' FWL
LATITUDE= 40.469397°
LONGITUDE= -104.763992°

FORMATION:

NIOBRARA

HOOD 14N-22A-M

SURFACE:

545' FSL & 1122' FEL
LATITUDE= 40.467862°
LONGITUDE= -104.796422°

TOP OF PRODUCTION:

792' FSL & 75' FWL
LATITUDE= 40.468586°
LONGITUDE= -104.792122°

BOTTOM HOLE:

812' FSL & 2607' FWL
LATITUDE= 40.468892°
LONGITUDE= -104.763995°

FORMATION:

NIOBRARA

HOOD 14N-22B-M

SURFACE:

525' FSL & 1122' FEL
LATITUDE= 40.467807°
LONGITUDE= -104.796421°

TOP OF PRODUCTION:

569' FSL & 75' FWL
LATITUDE= 40.467973°
LONGITUDE= -104.792121°

BOTTOM HOLE:

575' FSL & 2606' FWL
LATITUDE= 40.468242°
LONGITUDE= -104.763998°

FORMATION:

NIOBRARA

HOOD 36C-22-M

SURFACE:

505' FSL & 1122' FEL
LATITUDE= 40.467752°
LONGITUDE= -104.796421°

TOP OF PRODUCTION:

340' FSL & 75' FWL
LATITUDE= 40.467345°
LONGITUDE= -104.792120°

BOTTOM HOLE:

297' FSL & 2605' FWL
LATITUDE= 40.467479°
LONGITUDE= -104.764001°

FORMATION:

CODELL

HOOD 36N-22C-M

SURFACE:

485' FSL & 1122' FEL
LATITUDE= 40.467697°
LONGITUDE= -104.796421°

TOP OF PRODUCTION:

120' FSL & 75' FWL
LATITUDE= 40.466741°
LONGITUDE= -104.792119°

BOTTOM HOLE:

78' FSL & 2604' FWL
LATITUDE= 40.466877°
LONGITUDE= -104.764004°

FORMATION:

NIOBRARA

WELL PAD - HOOD-DOLES 37-20

MULTI-WELL PLAN

HOOD 25N-22B-M, HOOD 25C-22-M, HOOD 11N-22C-M,
HOOD 11N-22A-M, HOOD 11C-22-M, HOOD 23N-22C-M,
HOOD 23C-22-M, HOOD 23N-22B-M, HOOD 14N-22A-M,
HOOD 14N-22B-M, HOOD 36C-22-M & HOOD 36N-22C-M
LOCATED IN SECTIONS 20, 21 & 22
T6N, R66W, 6TH P.M.
WELD COUNTY, COLORADO



1625 Broadway, Suite 300
Denver, Colorado 80202



CONSULTING, LLC

SHERIDAN OFFICE
1095 Saberton Avenue
Sheridan, Wyoming 82801
Phone 307-674-0609

LOVELAND OFFICE
1635 Foxtrail Drive, Suite 204
Loveland, Colorado 80538
Phone 970-776-4331

DRAFTED BY:	LMO	CHECKED BY:	JRS	SHEET NO:
DATE DRAFTED:	9/12/16	DATE SURVEYED:	7/7/16	3
REVISED:	10/24/16	FILE NAME:	16-80	3 OF 3