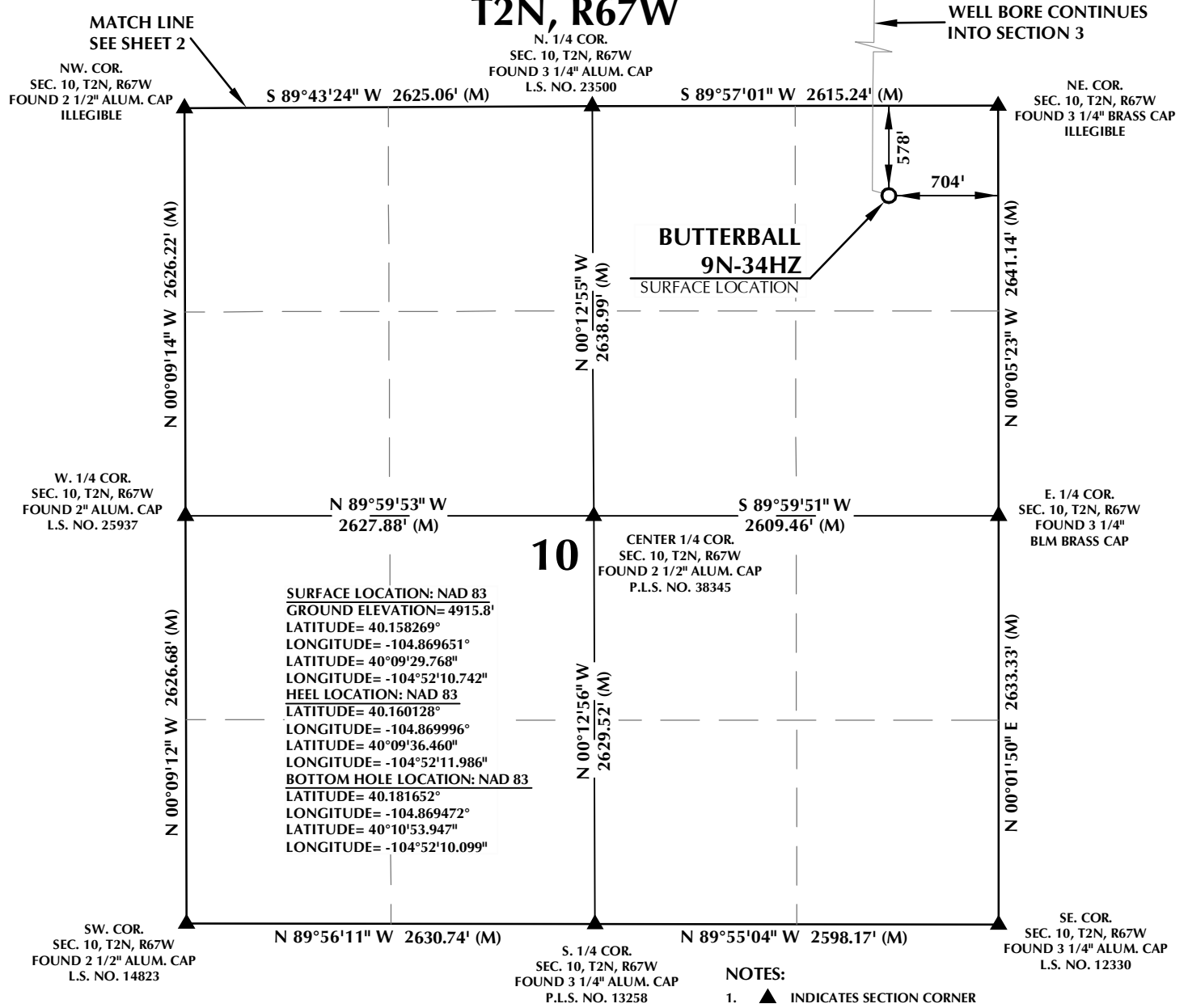


K:\LAND\2013\2013.90, COLORADO, T2N, R67W, SEC. 10, EAST PLATS\BUTTERBALL 24N2-34HZ.BB 24N2-34HZ.BB 24N2-34HZ.BB 10/20/2016 4:44:23 PM, lba

T2N, R67W



CERTIFICATE OF SURVEYOR:

THIS IS TO CERTIFY THAT THE ABOVE PLAT WAS PREPARED FROM FIELD NOTES OF ACTUAL SURVEY MADE BY ME OR UNDER MY SUPERVISION AND THAT THE SAME ARE TRUE AND CORRECT TO THE BEST OF MY KNOWLEDGE AND BELIEF. THIS CERTIFICATE DOES NOT REPRESENT A LAND SURVEY PLAT OR IMPROVEMENT SURVEY PLAT AS DEFINED BY C.R.S. 38-51-102 AND CANNOT BE RELIED UPON TO DETERMINE OWNERSHIP.

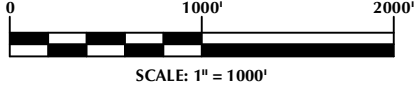
Randall K. French
RANDALL K. FRENCH
PROFESSIONAL LAND SURVEYOR
COLORADO REGISTRATION NUMBER 38512

NOTE:
ACCORDING TO COLORADO STATE LAW YOU MUST COMMENCE ANY LEGAL ACTION BASED UPON ANY DEFECT IN THIS SURVEY WITHIN THREE YEARS AFTER YOU FIRST DISCOVER SUCH DEFECT. IN NO EVENT MAY ANY ACTION BASED UPON ANY DEFECT IN THIS SURVEY BE COMMENCED MORE THAN TEN YEARS FROM THE DATE ON THE CERTIFICATION SHOWN HEREON.

NOTE:
MAGNETIC NORTH IS CURRENT AS OF 10/3/2016.
MAGNETIC NORTH CHANGES WEST 0°06' PER YEAR.

NOTES:

- ▲ INDICATES SECTION CORNER
- ⊙ INDICATES CALCULATED CORNER
- ELEVATION BASED ON NAVD88 (GEOID12B)
- BASIS OF BEARING DERIVED FROM COLORADO COORDINATE SYSTEM OF 1983 NORTH ZONE.
- ALL MEASURED DISTANCES ARE GRID.
COMBINED SCALE FACTOR: .99972597 CALCULATED FROM THE N. 1/4 CORNER OF SECTION 10, T2N, R67W
- OPERATOR: ROB WILSON / PDOP = 1.3
- SEE ADDENDUM TO WELL LOCATION CERTIFICATE FOR EXISTING IMPROVEMENTS WITHIN 500' OF THE WELL PAD.
- WELL FOOTAGES ARE MEASURED AT RIGHT ANGLES TO THE SECTION LINES.
- THE BOTTOM OF HOLE BEARS N00°39'45"E, 7842' FROM THE HEEL LOCATION.



WELL PAD - BUTTERBALL 24N2-34HZ

BUTTERBALL 9N-34HZ
WELL LOCATION CERTIFICATE
578' FNL & 704' FEL NENE (SURFACE)
LOCATED IN SECTION 10
99' FSL & 805' FEL SESE (HEEL)
LOCATED IN SECTION 3
T2N, R67W, 6TH P.M.
2581' FSL & 654' FEL NESE (BOTTOM)
LOCATED IN SECTION 34
T3N, R67W, 6TH P.M.
WELD COUNTY, COLORADO

**Kerr-McGee Oil &
Gas Onshore L.P.**
**1099 18th Street
Denver, Colorado 80202**



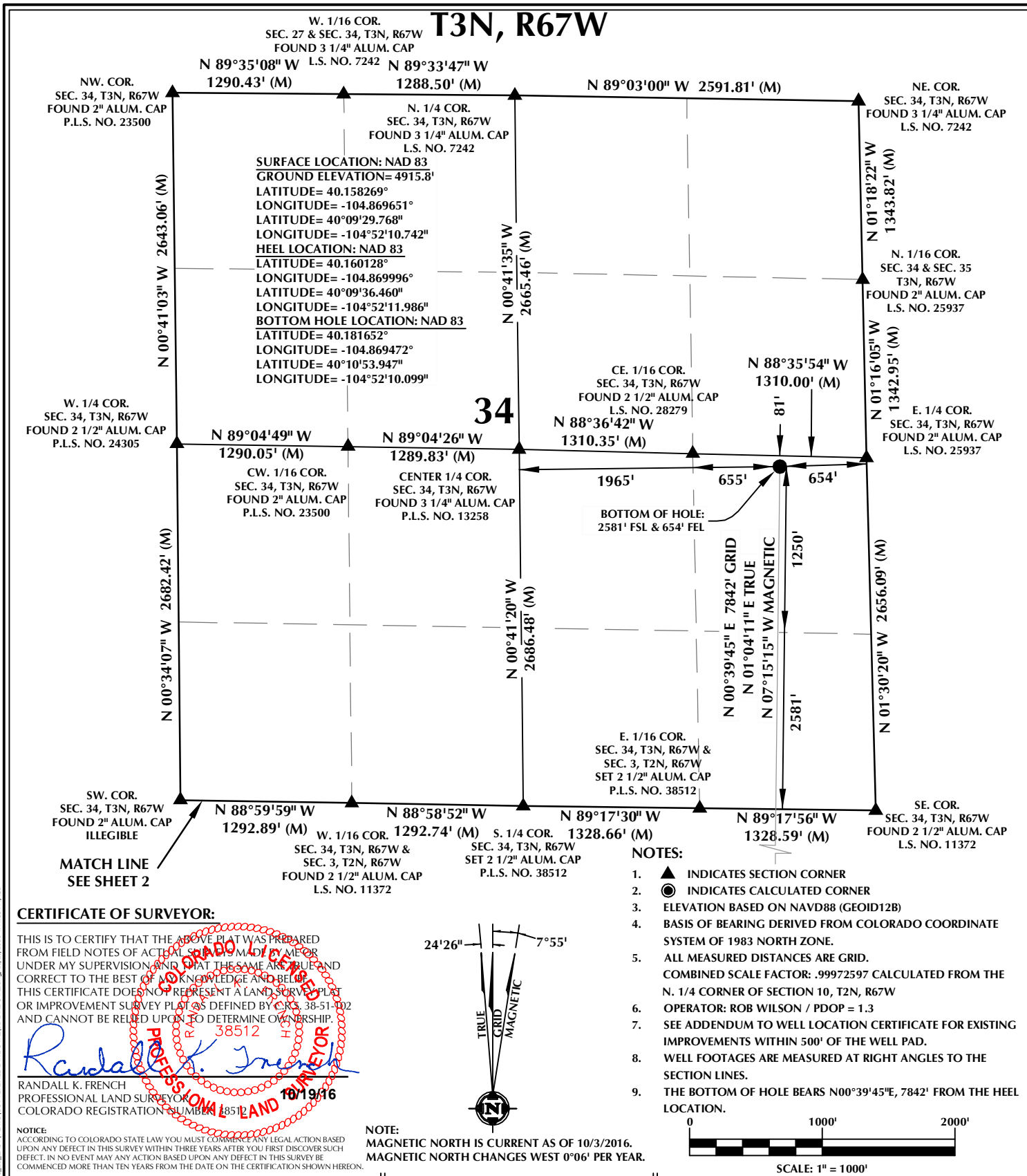
CONSULTING, LLC

SHERIDAN OFFICE
1095 Saberton Avenue
Sheridan, Wyoming 82801
Phone 307-674-0609

LOVELAND OFFICE
1635 Foxtrail Drive, Suite 204
Loveland, Colorado 80538
Phone 970-776-4331

DRAFTED BY:	LMO	CHECKED BY:	RKF	SHEET NO:
DATE DRAFTED:	10/19/16	DATE SURVEYED:	7/26/16	1
REVISED:		FILE NAME:	13-90	1 OF 3

K:\LANDMARK\2013\10.30.2016\T3N, R67W, SEC. 10, EAST PLATS\BUTTERBALL 24N2-34HZ.BB 24N2-34HZ.BB 24N2-34HZ.BB 10/20/2016 4:44:33 PM, lba



WELL PAD - BUTTERBALL 24N2-34HZ	Kerr-McGee Oil & Gas Onshore L.P.		CONSULTING, LLC	
BUTTERBALL 9N-34HZ WELL LOCATION CERTIFICATE 578' FNL & 704' FEL NENE (SURFACE) LOCATED IN SECTION 10 99' FSL & 805' FEL SESE (HEEL) LOCATED IN SECTION 3 T2N, R67W, 6TH P.M. 2581' FSL & 654' FEL NESE (BOTTOM) LOCATED IN SECTION 34 T3N, R67W, 6TH P.M. WELD COUNTY, COLORADO	1099 18th Street Denver, Colorado 80202		SHERIDAN OFFICE 1095 Saberton Avenue Sheridan, Wyoming 82801 Phone 307-674-0609	LOVELAND OFFICE 1635 Foxtrail Drive, Suite 204 Loveland, Colorado 80538 Phone 970-776-4331
		DRAFTED BY: LMO	CHECKED BY: RKF	SHEET NO: 3
		DATE DRAFTED: 10/19/16	DATE SURVEYED: 7/26/16	3 OF 3
		REVISED:	FILE NAME: 13-90	