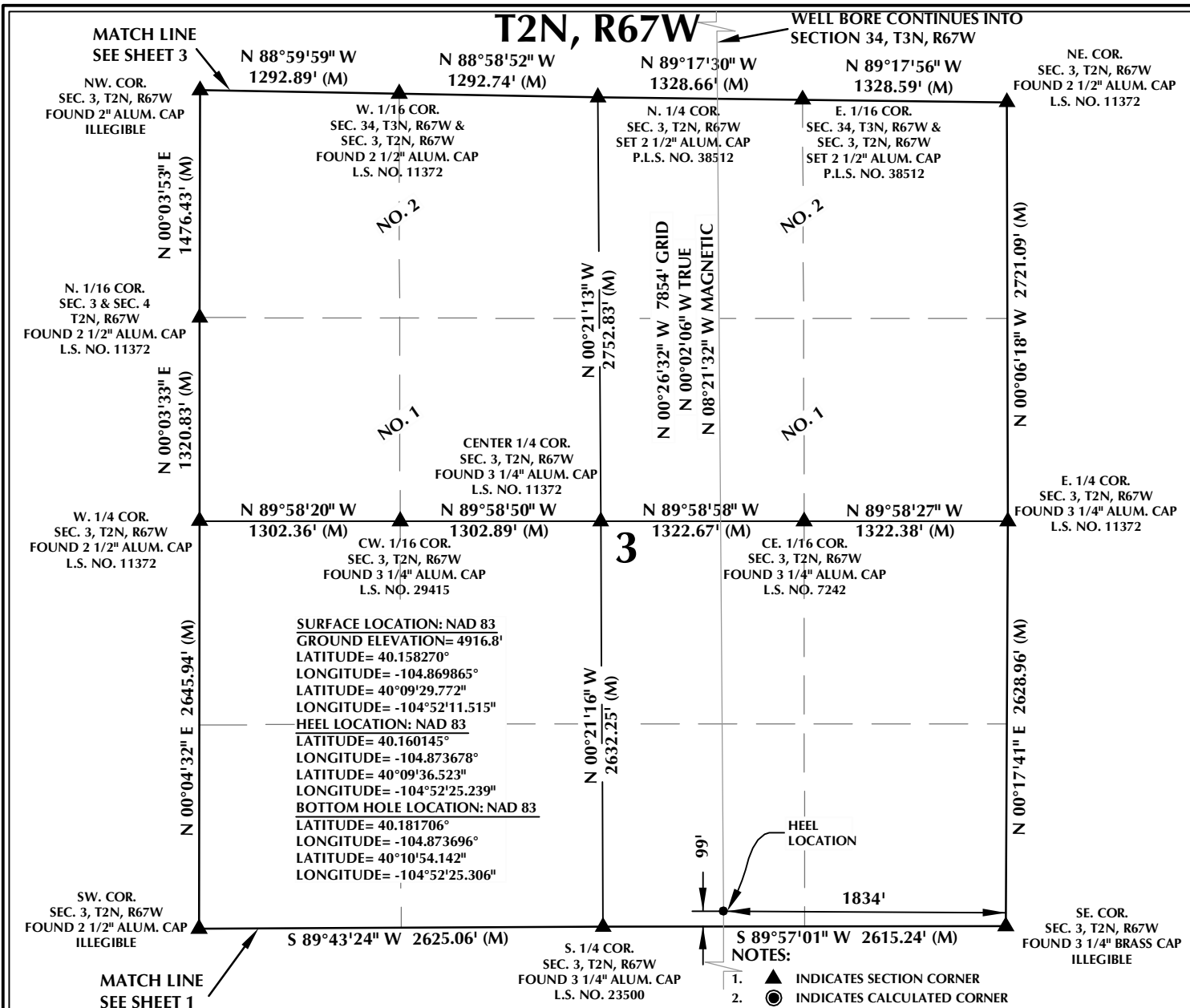
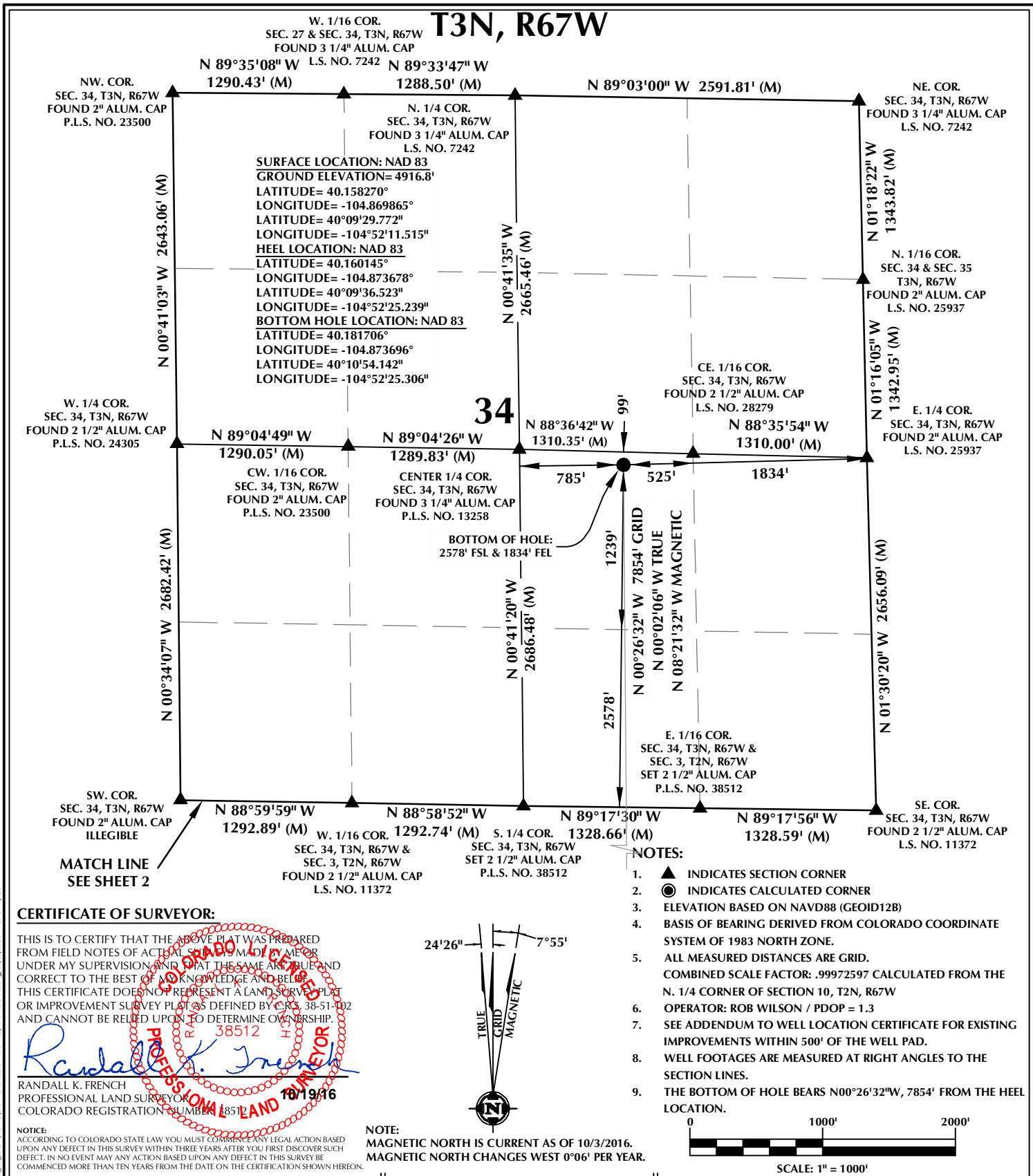


K:\LANDARKO\2013\2013.90 COLORADO T2N, R67W, SEC. 10 EAST\PLATS\BUTTERBALL 24N2-34HZ.BB 24N2-34HZ.DWG, 10/20/2016 4:43:43 PM, lba



K:\LANDARK\2013\2013.90 COLORADO T2N R67W SEC. 10 EAST\PLATS\BUTTERBALL 24N2-34HZ.BB 24N2-34HZ.Dwg, 10/20/2016 4:43:48 PM, lba



WELL PAD - BUTTERBALL 24N2-34HZ		Kerr-McGee Oil & Gas Onshore L.P.		CONSULTING, LLC	
BUTTERBALL 24N-34HZ WELL LOCATION CERTIFICATE 577' FNL & 764' FEL NENE (SURFACE) LOCATED IN SECTION 10 99' FSL & 1834' FEL SWSE (HEEL) LOCATED IN SECTION 3 T2N, R67W, 6TH P.M. 2578' FSL & 1834' FEL NWSE (BOTTOM) LOCATED IN SECTION 34 T3N, R67W, 6TH P.M. WELD COUNTY, COLORADO		1099 18th Street Denver, Colorado 80202		 SHERIDAN OFFICE 1095 Saberton Avenue Sheridan, Wyoming 82801 Phone 307-674-0609 LOVELAND OFFICE 1635 Foxtrail Drive, Suite 204 Loveland, Colorado 80538 Phone 970-776-4331	
DRAFTED BY: LMO		CHECKED BY: RKF		SHEET NO: 3	
DATE DRAFTED: 10/19/16		DATE SURVEYED: 7/26/16		3 OF 3	
REVISED:		FILE NAME: 13-90			