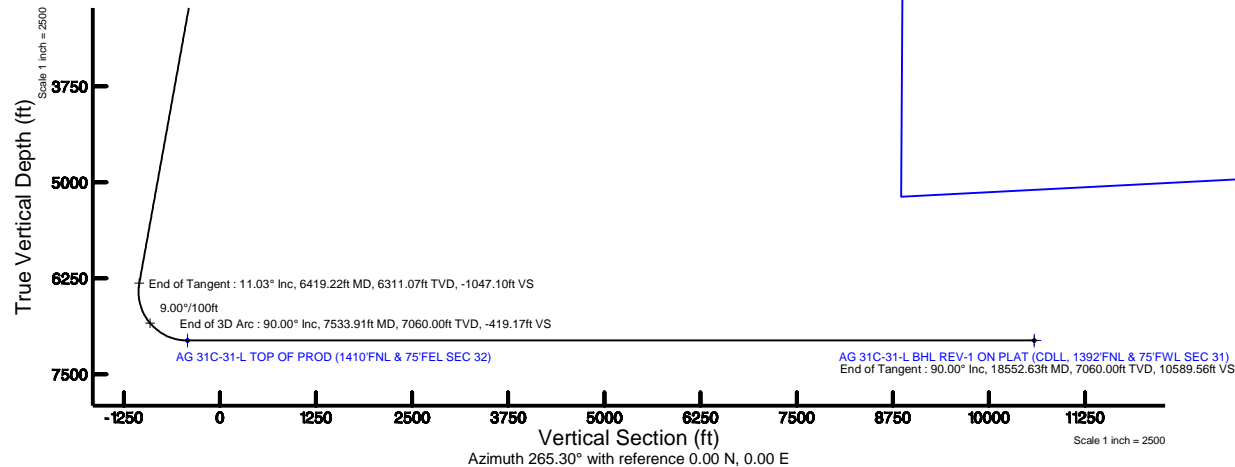
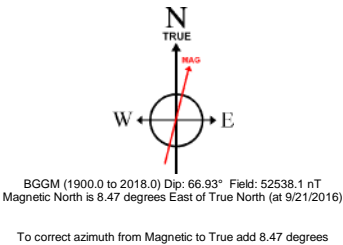


Location:	COLORADO	Slot:	SLOT#07 AG 31C-31-L (965'FNL & 531'FEL SEC 32)
Field:	WELD COUNTY (NAD83,TRUE NORTH)	Well:	AG 31C-31-L
Facility:	SEC.32-T06N-R66W	Wellbore:	AG 31C-31-L PWB

Plot reference wellpath is AG 31C-31-L REV-B.0 PWP	Grid System: NAD83 / Lambert Colorado SP, Northern Zone (501), US feet
True vertical depths are referenced to PRECISION 462 (20') (RKB)	* = Wellpath was transformed from a different geoidetic datum
Measured depths are referenced to PRECISION 462 (20') (RKB)	North Reference: True north
PRECISION 462 (20') (RKB) to Mean Sea Level: 4724 feet	Scale: True distance
Mean Sea Level to Mud line (At Slot: SLOT#07 AG 31C-31-L (965 FNL & 531' FEL SEC 32): 0 feet	Depths are in feet
Coordinates are in feet referenced to Slot	Created by: wagnjam on 2016-09-26
	Database: WA_DEN_Denver_Defn

Facility Name				Grid East (US ft)	Grid North (US ft)	Latitude	Longitude
SEC.32-T06N-R6W				3196477.049	1407381.484	40°26'58.261"N	104°47'38.472"W
Slot	Local N (ft)	Local E (ft)	Grid East (US ft)	Grid North (US ft)	Latitude	Longitude	
SLOT#07 AT 31C-13L (965FNL & 531FEL SEC 32)	-87.74	-81.56	3196396.191	1407293.102	40°26'57.394"N	104°47'39.527"W	
PRECISION 462 (20) (RKB) to Mud line (At Slot: SLOT#07 AT 31C-13L (965FNL & 531FEL SEC 32))						47245	
Mean Sea Level to Mud line (At Slot: SLOT#07 AT 31C-13L (965FNL & 531FEL SEC 32))						0R	
PRECISION 462 (20) (RKB) to Mean Sea Level						47245	

MD (ft)	X (ft)	Y (ft)	TVD (ft)	Inclination (°)	Azimuth (°)	VS (ft)	Comment
6825.82	1025.68	-386.47	6706.00	26.542	259.857	-990.54	SHARON SPRINGS
6866.74	1006.51	-389.69	6742.00	30.186	260.976	-971.17	NIO-A
7019.92	915.27	-401.66	6864.00	43.881	263.654	-879.26	NIO-B
7129.33	833.48	-409.82	6936.00	53.686	264.853	-797.08	NIO-C
7330.96	655.50	-423.16	7028.00	71.779	266.446	-618.60	FORT HAYS
7420.79	568.63	-428.10	7050.00	79.843	267.035	-531.62	CODELL



Design Comment	MD (ft)	Inc (°)	Az (°)	TVD (ft)	Local N (ft)	Local E (ft)	DLS (°/100ft)	VS (ft)
Tie On	20.00	0.000	108.303	20.00	0.00	0.00	0.00	0.00
End of Tangent	200.00	0.000	108.303	200.00	0.00	0.00	0.00	0.00
End of Build	751.65	11.033	108.303	748.25	-16.63	50.27	2.00	-48.74
End of Tangent	6419.22	11.033	108.303	6311.07	-357.25	1080.02	0.00	-1047.10
End of 3D Arc	7533.91	90.000	267.738	7060.00	-433.23	456.22	9.00	-419.17
End of Tangent	18552.63	90.000	267.738	7060.00	-868.15	-10553.91	0.00	10589.56

Name	MD (ft)	TVD (ft)	Local N (ft)	Local E (ft)	Grid East (US ft)	Grid North (US ft)	Latitude	Longitude
SEC.31-TOWN-REGGW		-20.00	87.74	81.56	3196477.05	1407381.48	40°26'58.261"N	104°47'38.472"W
SEC.32-TOWN-REGGW		-20.00	87.74	81.56	3196477.05	1407381.48	40°26'58.261"N	104°47'38.472"W
A0 31C-31-L BPL REV-1 ON PLAT (CDLL, 192FTN, & 75FWPL SEC 31)	18552.63	7060.00	-468.15	-10553.31	3185849.93	1406341.02	40°26'48.792"N	104°49'58.035"W
A0 31C-31-L TOP OF PROD (1410FTN, & 75FEI SEC 32)	7533.91	7060.00	-433.23	456.22	3196955.82	1406863.54	40°26'53.113"N	104°47'34.626"W

MD (ft)	Inc (°)	Az (°)	TVD (ft)	Local N (ft)	Local E (ft)	Grid East (US ft)	Grid North (US ft)	Latitude	Longitude
20.00	0.000	108.303	20.00	0.00	0.00	3196396.19	1407293.10	40°26'57.394"N	104°47'39.527"W





SYNERGY RESOURCES CORPORATION

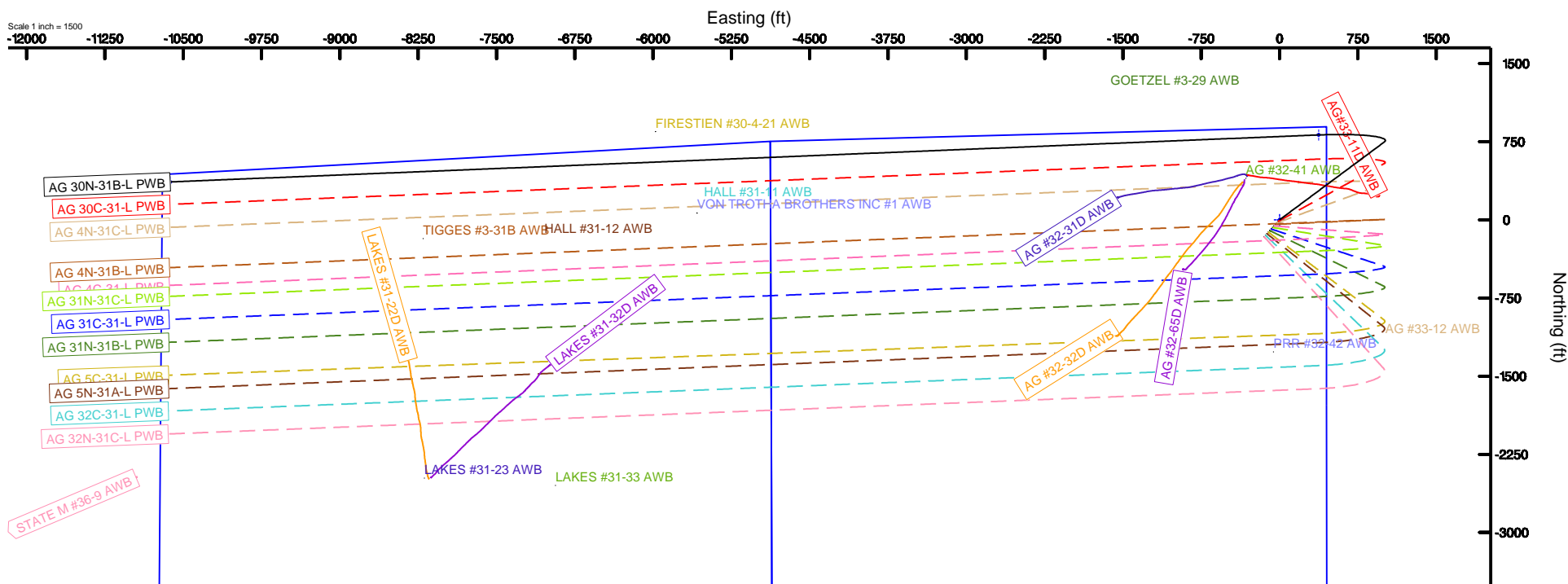
Location: COLORADO Slot: SLOT#01 AG 30N-31B-L (879FNL & 449FEL SEC 32)
Field: WELD COUNTY (NAD83, TRUE NORTH) Well: AG 30N-31B-L
Facility: SEC.32-T06N-R66W Wellbore: AG 30N-31B-L PWB



BGGM (1900.0 to 2018.0) Dip: 66.93° Field: 52538.1 nT
Magnetic North is 8.47 degrees East of True North (at 9/21/2016)

To correct azimuth from Magnetic to True add 8.47 degrees

Scale 1 inch = 1500



~VERSION INFORMATION

VERS. 2.0 : CWLS LOG ASCII STANDARD-VERSION 2.0

WRAP. NO : ASCII DATA SECTION CONTAINS ONE ROW PER WELLPATH STATION

~WELL INFORMATION

#MNEM	.UNITS	DATA	:DESCRIPTION
#----	.-----	----	:-----
STRT	.ft	0.00	:START MD
STOP	.ft	18552.63	:STOP MD
STEP	.ft	0.0	:STEP (non-uniform increment)
NULL	.	-999.99	:NULL
COMP	.	SYNERGY RESOURCES CORPORATION	:OPERATOR
WELL	.	AG 31C-31-L	:WELL
FLD	.	WELD COUNTY (NAD83,TRUE NORTH)	:FIELD
LOC	.	COLORADO	:AREA (aka: Location)
CNTY	.	N/A	:COUNTY
STAT	.	N/A	:STATE
CTRY	.	N/A	:COUNTRY
SRVC	.	Baker Hughes	:CONTRACTOR
DATE	.	09/21/2016	:LOG REV DATE
API	.		:API NUMBER

~OTHER INFORMATION

#Software: WellArchitect(R) Version 5.0

#MNEM	.UNITS	DATA	:DESCRIPTION
#----	.-----	----	:-----
WPTYPE	.	PLANNED WELLPATH	:WELLPATH TYPE
FACILITY	.	SEC.32-T06N-R66W	:FACILITY
SLOT	.	SLOT#07 AG 31C-31-L (965'FNL & 531'FEL SEC 32)	:SLOT
WELLBORE	.	AG 31C-31-L PWB	:WELLBORE
WELLPATH	.	AG 31C-31-L REV-B.0 PWP	:WELLPATH
MDREFPT	.	PRECISION 462 (20') (RKB)	:MD REFERENCE POINT
TVDREFPT	.	PRECISION 462 (20') (RKB)	:TVD REFERENCE POINT
LCLREFPT	.	SLOT	:LOCAL COORDINATE REFERENCE PT
VSAZIMUTH	.deg	265.30	:VERTICAL SECTION AZIMUTH
VSORIGN	.ft	0.00	:VERTICAL SECTION ORIGIN NORTH
VSORIGE	.ft	0.00	:VERTICAL SECTION ORIGIN EAST

~CURVE (WELLPATH) INFORMATION

#MNEM	.UNITS	:DESCRIPTION
#----	.-----	:-----
DEPT	.ft	:MEASURED DEPTH
INC	.deg	:INCLINATION
AZI	.deg	:AZIMUTH
TVD	.ft	:TRUE VERTICAL DEPTH
SECT	.ft	:CROSS SECTION (CURTAIN/VERTICAL)
LOCALN	.ft	:LOCAL NORTH
LOCALE	.ft	:LOCAL EAST

AG_31C-31-L_REV-B.0_PWP.1as

LAT .deg :LATITUDE
 LONG .deg :LONGITUDE
 DLS .deg/100ft :DOGLEG SEVERITY

~ASCII DATA

0.00	0.00	108.30	0.00	0.00	0.00	0.00	40.4492761	-104.7943131	0.00
20.00	0.00	108.30	20.00	0.00	0.00	0.00	40.4492761	-104.7943131	0.00
120.00	0.00	108.30	120.00	0.00	0.00	0.00	40.4492761	-104.7943131	0.00
200.00	0.00	108.30	200.00	0.00	0.00	0.00	40.4492761	-104.7943131	0.00
220.00	0.40	108.30	220.00	-0.06	-0.02	0.07	40.4492761	-104.7943128	2.00
320.00	2.40	108.30	319.96	-2.31	-0.79	2.39	40.4492739	-104.7943045	2.00
420.00	4.40	108.30	419.78	-7.77	-2.65	8.02	40.4492688	-104.7942843	2.00
520.00	6.40	108.30	519.33	-16.43	-5.61	16.95	40.4492607	-104.7942522	2.00
620.00	8.40	108.30	618.50	-28.29	-9.65	29.18	40.4492496	-104.7942082	2.00
720.00	10.40	108.30	717.15	-43.32	-14.78	44.68	40.4492355	-104.7941525	2.00
751.65	11.03	108.30	748.25	-48.74	-16.63	50.27	40.4492305	-104.7941324	2.00
820.00	11.03	108.30	815.33	-60.78	-20.74	62.69	40.4492192	-104.7940878	0.00
920.00	11.03	108.30	913.49	-78.39	-26.75	80.86	40.4492027	-104.7940225	0.00
1020.00	11.03	108.30	1011.64	-96.01	-32.76	99.03	40.4491862	-104.7939572	0.00
1120.00	11.03	108.30	1109.79	-113.62	-38.77	117.20	40.4491697	-104.7938920	0.00
1220.00	11.03	108.30	1207.94	-131.24	-44.78	135.37	40.4491532	-104.7938267	0.00
1320.00	11.03	108.30	1306.09	-148.85	-50.79	153.54	40.4491367	-104.7937614	0.00
1420.00	11.03	108.30	1404.24	-166.47	-56.80	171.70	40.4491202	-104.7936961	0.00
1520.00	11.03	108.30	1502.40	-184.09	-62.81	189.87	40.4491037	-104.7936308	0.00
1620.00	11.03	108.30	1600.55	-201.70	-68.82	208.04	40.4490872	-104.7935656	0.00
1720.00	11.03	108.30	1698.70	-219.32	-74.83	226.21	40.4490707	-104.7935003	0.00
1820.00	11.03	108.30	1796.85	-236.93	-80.84	244.38	40.4490542	-104.7934350	0.00
1920.00	11.03	108.30	1895.00	-254.55	-86.85	262.55	40.4490377	-104.7933697	0.00
2020.00	11.03	108.30	1993.15	-272.16	-92.86	280.72	40.4490212	-104.7933044	0.00
2120.00	11.03	108.30	2091.31	-289.78	-98.87	298.89	40.4490047	-104.7932392	0.00
2220.00	11.03	108.30	2189.46	-307.39	-104.88	317.06	40.4489882	-104.7931739	0.00
2320.00	11.03	108.30	2287.61	-325.01	-110.89	335.23	40.4489717	-104.7931086	0.00
2420.00	11.03	108.30	2385.76	-342.62	-116.90	353.40	40.4489552	-104.7930433	0.00
2520.00	11.03	108.30	2483.91	-360.24	-122.91	371.57	40.4489387	-104.7929780	0.00
2620.00	11.03	108.30	2582.06	-377.85	-128.92	389.73	40.4489222	-104.7929127	0.00
2720.00	11.03	108.30	2680.22	-395.47	-134.93	407.90	40.4489057	-104.7928475	0.00
2820.00	11.03	108.30	2778.37	-413.08	-140.94	426.07	40.4488892	-104.7927822	0.00
2920.00	11.03	108.30	2876.52	-430.70	-146.95	444.24	40.4488727	-104.7927169	0.00
3020.00	11.03	108.30	2974.67	-448.32	-152.96	462.41	40.4488563	-104.7926516	0.00
3120.00	11.03	108.30	3072.82	-465.93	-158.97	480.58	40.4488398	-104.7925863	0.00
3220.00	11.03	108.30	3170.98	-483.55	-164.98	498.75	40.4488233	-104.7925211	0.00
3320.00	11.03	108.30	3269.13	-501.16	-170.99	516.92	40.4488068	-104.7924558	0.00
3420.00	11.03	108.30	3367.28	-518.78	-177.00	535.09	40.4487903	-104.7923905	0.00
3520.00	11.03	108.30	3465.43	-536.39	-183.01	553.26	40.4487738	-104.7923252	0.00
3620.00	11.03	108.30	3563.58	-554.01	-189.02	571.43	40.4487573	-104.7922599	0.00
3720.00	11.03	108.30	3661.73	-571.62	-195.03	589.60	40.4487408	-104.7921947	0.00
3820.00	11.03	108.30	3759.89	-589.24	-201.04	607.77	40.4487243	-104.7921294	0.00
3920.00	11.03	108.30	3858.04	-606.85	-207.05	625.93	40.4487078	-104.7920641	0.00

AG_31C-31-L_REV-B.0_PWP.1as

4020.00	11.03	108.30	3956.19	-624.47	-213.06	644.10	40.4486913	-104.7919988	0.00
4120.00	11.03	108.30	4054.34	-642.08	-219.07	662.27	40.4486748	-104.7919335	0.00
4220.00	11.03	108.30	4152.49	-659.70	-225.08	680.44	40.4486583	-104.7918682	0.00
4320.00	11.03	108.30	4250.64	-677.31	-231.09	698.61	40.4486418	-104.7918030	0.00
4420.00	11.03	108.30	4348.80	-694.93	-237.10	716.78	40.4486253	-104.7917377	0.00
4520.00	11.03	108.30	4446.95	-712.55	-243.11	734.95	40.4486088	-104.7916724	0.00
4620.00	11.03	108.30	4545.10	-730.16	-249.12	753.12	40.4485923	-104.7916071	0.00
4720.00	11.03	108.30	4643.25	-747.78	-255.13	771.29	40.4485758	-104.7915418	0.00
4820.00	11.03	108.30	4741.40	-765.39	-261.14	789.46	40.4485593	-104.7914766	0.00
4920.00	11.03	108.30	4839.55	-783.01	-267.15	807.63	40.4485428	-104.7914113	0.00
5020.00	11.03	108.30	4937.71	-800.62	-273.16	825.80	40.4485263	-104.7913460	0.00
5120.00	11.03	108.30	5035.86	-818.24	-279.17	843.97	40.4485098	-104.7912807	0.00
5220.00	11.03	108.30	5134.01	-835.85	-285.18	862.13	40.4484933	-104.7912154	0.00
5320.00	11.03	108.30	5232.16	-853.47	-291.19	880.30	40.4484768	-104.7911502	0.00
5420.00	11.03	108.30	5330.31	-871.08	-297.20	898.47	40.4484603	-104.7910849	0.00
5520.00	11.03	108.30	5428.46	-888.70	-303.21	916.64	40.4484438	-104.7910196	0.00
5620.00	11.03	108.30	5526.62	-906.31	-309.22	934.81	40.4484273	-104.7909543	0.00
5720.00	11.03	108.30	5624.77	-923.93	-315.23	952.98	40.4484108	-104.7908890	0.00
5820.00	11.03	108.30	5722.92	-941.54	-321.24	971.15	40.4483943	-104.7908238	0.00
5920.00	11.03	108.30	5821.07	-959.16	-327.25	989.32	40.4483778	-104.7907585	0.00
6020.00	11.03	108.30	5919.22	-976.78	-333.26	1007.49	40.4483613	-104.7906932	0.00
6120.00	11.03	108.30	6017.37	-994.39	-339.27	1025.66	40.4483448	-104.7906279	0.00
6220.00	11.03	108.30	6115.53	-1012.01	-345.28	1043.83	40.4483283	-104.7905626	0.00
6320.00	11.03	108.30	6213.68	-1029.62	-351.29	1062.00	40.4483118	-104.7904974	0.00
6419.22	11.03	108.30	6311.07	-1047.10	-357.25	1080.02	40.4482954	-104.7904326	0.00
6420.00	10.97	108.44	6311.83	-1047.24	-357.30	1080.16	40.4482953	-104.7904321	9.00
6520.00	4.11	160.00	6410.99	-1056.95	-363.69	1090.44	40.4482778	-104.7903952	9.00
6620.00	8.68	241.07	6510.50	-1051.00	-370.72	1085.05	40.4482585	-104.7904145	9.00
6720.00	17.19	254.95	6607.89	-1029.55	-378.22	1064.14	40.4482379	-104.7904897	9.00
6820.00	26.02	259.67	6700.78	-993.11	-386.01	1028.21	40.4482165	-104.7906187	9.00
6920.00	34.94	262.11	6786.87	-942.58	-393.89	978.16	40.4481949	-104.7907986	9.00
7020.00	43.89	263.65	6864.06	-879.21	-401.66	915.22	40.4481735	-104.7910247	9.00
7120.00	52.85	264.76	6930.42	-804.55	-409.15	840.93	40.4481530	-104.7912917	9.00
7220.00	61.82	265.64	6984.34	-720.46	-416.15	757.12	40.4481338	-104.7915928	9.00
7320.00	70.80	266.37	7024.48	-628.99	-422.51	665.87	40.4481163	-104.7919206	9.00
7420.00	79.77	267.03	7049.86	-532.40	-428.06	569.41	40.4481011	-104.7922672	9.00
7520.00	88.75	267.65	7059.85	-433.06	-432.67	470.12	40.4480885	-104.7926240	9.00
7533.91	90.00	267.74	7060.00	-419.17	-433.23	456.22	40.4480869	-104.7926739	9.00
7620.00	90.00	267.74	7060.00	-333.15	-436.63	370.20	40.4480776	-104.7929830	0.00
7720.00	90.00	267.74	7060.00	-233.24	-440.57	270.27	40.4480668	-104.7933420	0.00
7820.00	90.00	267.74	7060.00	-133.34	-444.52	170.35	40.4480560	-104.7937010	0.00
7920.00	90.00	267.74	7060.00	-33.43	-448.47	70.43	40.4480451	-104.7940600	0.00
8020.00	90.00	267.74	7060.00	66.48	-452.41	-29.49	40.4480343	-104.7944190	0.00
8120.00	90.00	267.74	7060.00	166.39	-456.36	-129.41	40.4480235	-104.7947780	0.00
8220.00	90.00	267.74	7060.00	266.30	-460.31	-229.34	40.4480126	-104.7951370	0.00
8320.00	90.00	267.74	7060.00	366.21	-464.26	-329.26	40.4480018	-104.7954961	0.00
8420.00	90.00	267.74	7060.00	466.12	-468.20	-429.18	40.4479909	-104.7958551	0.00
8520.00	90.00	267.74	7060.00	566.03	-472.15	-529.10	40.4479801	-104.7962141	0.00

AG_31C-31-L_REV-B.0_PWP.1as

8620.00	90.00	267.74	7060.00	665.94	-476.10	-629.02	40.4479693	-104.7965731	0.00
8720.00	90.00	267.74	7060.00	765.85	-480.04	-728.95	40.4479584	-104.7969321	0.00
8820.00	90.00	267.74	7060.00	865.76	-483.99	-828.87	40.4479476	-104.7972911	0.00
8920.00	90.00	267.74	7060.00	965.67	-487.94	-928.79	40.4479367	-104.7976501	0.00
9020.00	90.00	267.74	7060.00	1065.58	-491.89	-1028.71	40.4479259	-104.7980092	0.00
9120.00	90.00	267.74	7060.00	1165.49	-495.83	-1128.64	40.4479150	-104.7983682	0.00
9220.00	90.00	267.74	7060.00	1265.39	-499.78	-1228.56	40.4479042	-104.7987272	0.00
9320.00	90.00	267.74	7060.00	1365.30	-503.73	-1328.48	40.4478933	-104.7990862	0.00
9420.00	90.00	267.74	7060.00	1465.21	-507.67	-1428.40	40.4478825	-104.7994452	0.00
9520.00	90.00	267.74	7060.00	1565.12	-511.62	-1528.32	40.4478716	-104.7998042	0.00
9620.00	90.00	267.74	7060.00	1665.03	-515.57	-1628.25	40.4478608	-104.8001632	0.00
9720.00	90.00	267.74	7060.00	1764.94	-519.52	-1728.17	40.4478499	-104.8005222	0.00
9820.00	90.00	267.74	7060.00	1864.85	-523.46	-1828.09	40.4478391	-104.8008812	0.00
9920.00	90.00	267.74	7060.00	1964.76	-527.41	-1928.01	40.4478282	-104.8012403	0.00
10020.00	90.00	267.74	7060.00	2064.67	-531.36	-2027.93	40.4478174	-104.8015993	0.00
10120.00	90.00	267.74	7060.00	2164.58	-535.30	-2127.86	40.4478065	-104.8019583	0.00
10220.00	90.00	267.74	7060.00	2264.49	-539.25	-2227.78	40.4477957	-104.8023173	0.00
10320.00	90.00	267.74	7060.00	2364.40	-543.20	-2327.70	40.4477848	-104.8026763	0.00
10420.00	90.00	267.74	7060.00	2464.31	-547.15	-2427.62	40.4477739	-104.8030353	0.00
10520.00	90.00	267.74	7060.00	2564.22	-551.09	-2527.54	40.4477631	-104.8033943	0.00
10620.00	90.00	267.74	7060.00	2664.13	-555.04	-2627.47	40.4477522	-104.8037533	0.00
10720.00	90.00	267.74	7060.00	2764.03	-558.99	-2727.39	40.4477413	-104.8041123	0.00
10820.00	90.00	267.74	7060.00	2863.94	-562.93	-2827.31	40.4477305	-104.8044714	0.00
10920.00	90.00	267.74	7060.00	2963.85	-566.88	-2927.23	40.4477196	-104.8048304	0.00
11020.00	90.00	267.74	7060.00	3063.76	-570.83	-3027.15	40.4477087	-104.8051894	0.00
11120.00	90.00	267.74	7060.00	3163.67	-574.78	-3127.08	40.4476979	-104.8055484	0.00
11220.00	90.00	267.74	7060.00	3263.58	-578.72	-3227.00	40.4476870	-104.8059074	0.00
11320.00	90.00	267.74	7060.00	3363.49	-582.67	-3326.92	40.4476761	-104.8062664	0.00
11420.00	90.00	267.74	7060.00	3463.40	-586.62	-3426.84	40.4476653	-104.8066254	0.00
11520.00	90.00	267.74	7060.00	3563.31	-590.56	-3526.76	40.4476544	-104.8069844	0.00
11620.00	90.00	267.74	7060.00	3663.22	-594.51	-3626.69	40.4476435	-104.8073434	0.00
11720.00	90.00	267.74	7060.00	3763.13	-598.46	-3726.61	40.4476326	-104.8077024	0.00
11820.00	90.00	267.74	7060.00	3863.04	-602.41	-3826.53	40.4476218	-104.8080615	0.00
11920.00	90.00	267.74	7060.00	3962.95	-606.35	-3926.45	40.4476109	-104.8084205	0.00
12020.00	90.00	267.74	7060.00	4062.86	-610.30	-4026.38	40.4476000	-104.8087795	0.00
12120.00	90.00	267.74	7060.00	4162.76	-614.25	-4126.30	40.4475891	-104.8091385	0.00
12220.00	90.00	267.74	7060.00	4262.67	-618.19	-4226.22	40.4475783	-104.8094975	0.00
12320.00	90.00	267.74	7060.00	4362.58	-622.14	-4326.14	40.4475674	-104.8098565	0.00
12420.00	90.00	267.74	7060.00	4462.49	-626.09	-4426.06	40.4475565	-104.8102155	0.00
12520.00	90.00	267.74	7060.00	4562.40	-630.04	-4525.99	40.4475456	-104.8105745	0.00
12620.00	90.00	267.74	7060.00	4662.31	-633.98	-4625.91	40.4475347	-104.8109335	0.00
12720.00	90.00	267.74	7060.00	4762.22	-637.93	-4725.83	40.4475238	-104.8112925	0.00
12820.00	90.00	267.74	7060.00	4862.13	-641.88	-4825.75	40.4475129	-104.8116515	0.00
12920.00	90.00	267.74	7060.00	4962.04	-645.82	-4925.67	40.4475021	-104.8120105	0.00
13020.00	90.00	267.74	7060.00	5061.95	-649.77	-5025.60	40.4474912	-104.8123696	0.00
13120.00	90.00	267.74	7060.00	5161.86	-653.72	-5125.52	40.4474803	-104.8127286	0.00
13220.00	90.00	267.74	7060.00	5261.77	-657.67	-5225.44	40.4474694	-104.8130876	0.00
13320.00	90.00	267.74	7060.00	5361.68	-661.61	-5325.36	40.4474585	-104.8134466	0.00

AG_31C-31-L_REV-B.0_PWP.1as

13420.00	90.00	267.74	7060.00	5461.59	-665.56	-5425.28	40.4474476	-104.8138056	0.00
13520.00	90.00	267.74	7060.00	5561.50	-669.51	-5525.21	40.4474367	-104.8141646	0.00
13620.00	90.00	267.74	7060.00	5661.40	-673.45	-5625.13	40.4474258	-104.8145236	0.00
13720.00	90.00	267.74	7060.00	5761.31	-677.40	-5725.05	40.4474149	-104.8148826	0.00
13820.00	90.00	267.74	7060.00	5861.22	-681.35	-5824.97	40.4474040	-104.8152416	0.00
13920.00	90.00	267.74	7060.00	5961.13	-685.30	-5924.89	40.4473931	-104.8156006	0.00
14020.00	90.00	267.74	7060.00	6061.04	-689.24	-6024.82	40.4473822	-104.8159596	0.00
14120.00	90.00	267.74	7060.00	6160.95	-693.19	-6124.74	40.4473713	-104.8163186	0.00
14220.00	90.00	267.74	7060.00	6260.86	-697.14	-6224.66	40.4473604	-104.8166776	0.00
14320.00	90.00	267.74	7060.00	6360.77	-701.08	-6324.58	40.4473495	-104.8170366	0.00
14420.00	90.00	267.74	7060.00	6460.68	-705.03	-6424.50	40.4473386	-104.8173957	0.00
14520.00	90.00	267.74	7060.00	6560.59	-708.98	-6524.43	40.4473277	-104.8177547	0.00
14620.00	90.00	267.74	7060.00	6660.50	-712.93	-6624.35	40.4473168	-104.8181137	0.00
14720.00	90.00	267.74	7060.00	6760.41	-716.87	-6724.27	40.4473059	-104.8184727	0.00
14820.00	90.00	267.74	7060.00	6860.32	-720.82	-6824.19	40.4472950	-104.8188317	0.00
14920.00	90.00	267.74	7060.00	6960.23	-724.77	-6924.12	40.4472840	-104.8191907	0.00
15020.00	90.00	267.74	7060.00	7060.13	-728.71	-7024.04	40.4472731	-104.8195497	0.00
15120.00	90.00	267.74	7060.00	7160.04	-732.66	-7123.96	40.4472622	-104.8199087	0.00
15220.00	90.00	267.74	7060.00	7259.95	-736.61	-7223.88	40.4472513	-104.8202677	0.00
15320.00	90.00	267.74	7060.00	7359.86	-740.56	-7323.80	40.4472404	-104.8206267	0.00
15420.00	90.00	267.74	7060.00	7459.77	-744.50	-7423.73	40.4472295	-104.8209857	0.00
15520.00	90.00	267.74	7060.00	7559.68	-748.45	-7523.65	40.4472186	-104.8213447	0.00
15620.00	90.00	267.74	7060.00	7659.59	-752.40	-7623.57	40.4472076	-104.8217037	0.00
15720.00	90.00	267.74	7060.00	7759.50	-756.34	-7723.49	40.4471967	-104.8220627	0.00
15820.00	90.00	267.74	7060.00	7859.41	-760.29	-7823.41	40.4471858	-104.8224217	0.00
15920.00	90.00	267.74	7060.00	7959.32	-764.24	-7923.34	40.4471749	-104.8227807	0.00
16020.00	90.00	267.74	7060.00	8059.23	-768.19	-8023.26	40.4471640	-104.8231397	0.00
16120.00	90.00	267.74	7060.00	8159.14	-772.13	-8123.18	40.4471530	-104.8234987	0.00
16220.00	90.00	267.74	7060.00	8259.05	-776.08	-8223.10	40.4471421	-104.8238577	0.00
16320.00	90.00	267.74	7060.00	8358.96	-780.03	-8323.02	40.4471312	-104.8242168	0.00
16420.00	90.00	267.74	7060.00	8458.86	-783.97	-8422.95	40.4471203	-104.8245758	0.00
16520.00	90.00	267.74	7060.00	8558.77	-787.92	-8522.87	40.4471093	-104.8249348	0.00
16620.00	90.00	267.74	7060.00	8658.68	-791.87	-8622.79	40.4470984	-104.8252938	0.00
16720.00	90.00	267.74	7060.00	8758.59	-795.82	-8722.71	40.4470875	-104.8256528	0.00
16820.00	90.00	267.74	7060.00	8858.50	-799.76	-8822.63	40.4470765	-104.8260118	0.00
16920.00	90.00	267.74	7060.00	8958.41	-803.71	-8922.56	40.4470656	-104.8263708	0.00
17020.00	90.00	267.74	7060.00	9058.32	-807.66	-9022.48	40.4470547	-104.8267298	0.00
17120.00	90.00	267.74	7060.00	9158.23	-811.60	-9122.40	40.4470437	-104.8270888	0.00
17220.00	90.00	267.74	7060.00	9258.14	-815.55	-9222.32	40.4470328	-104.8274478	0.00
17320.00	90.00	267.74	7060.00	9358.05	-819.50	-9322.24	40.4470219	-104.8278068	0.00
17420.00	90.00	267.74	7060.00	9457.96	-823.45	-9422.17	40.4470109	-104.8281658	0.00
17520.00	90.00	267.74	7060.00	9557.87	-827.39	-9522.09	40.4470000	-104.8285248	0.00
17620.00	90.00	267.74	7060.00	9657.78	-831.34	-9622.01	40.4469890	-104.8288838	0.00
17720.00	90.00	267.74	7060.00	9757.69	-835.29	-9721.93	40.4469781	-104.8292428	0.00
17820.00	90.00	267.74	7060.00	9857.60	-839.24	-9821.86	40.4469672	-104.8296018	0.00
17920.00	90.00	267.74	7060.00	9957.50	-843.18	-9921.78	40.4469562	-104.8299608	0.00
18020.00	90.00	267.74	7060.00	10057.41	-847.13	-10021.70	40.4469453	-104.8303198	0.00
18120.00	90.00	267.74	7060.00	10157.32	-851.08	-10121.62	40.4469343	-104.8306788	0.00

					AG_31C-31-L_REV-B.0_PWP.las					
18220.00	90.00	267.74	7060.00	10257.23	-855.02	-10221.54	40.4469234	-104.8310378	0.00	
18320.00	90.00	267.74	7060.00	10357.14	-858.97	-10321.47	40.4469124	-104.8313968	0.00	
18420.00	90.00	267.74	7060.00	10457.05	-862.92	-10421.39	40.4469015	-104.8317558	0.00	
18520.00	90.00	267.74	7060.00	10556.96	-866.87	-10521.31	40.4468905	-104.8321148	0.00	
18552.63	90.00	267.74	7060.00	10589.56	-868.15	-10553.91	40.4468869	-104.8322319	0.00	



Planned Wellpath Report

AG 31C-31-L REV-B.0 PWP

Page 1 of 10



REFERENCE WELLPATH IDENTIFICATION

Operator	SYNERGY RESOURCES CORPORATION	Slot	SLOT#07 AG 31C-31-L (965'FNL & 531'FEL SEC 32)
Area	COLORADO	Well	AG 31C-31-L
Field	WELD COUNTY (NAD83,TRUE NORTH)	Wellbore	AG 31C-31-L PWB
Facility	SEC.32-T06N-R66W		

REPORT SETUP INFORMATION

Projection System	NAD83 / Lambert Colorado SP, Northern Zone (501), US feet	Software System	WellArchitect® 5.0
North Reference	True	User	Wagnjam
Scale	0.999963	Report Generated	9/27/2016 at 10:37:45 AM
Convergence at slot	0.46° East	Database/Source file	WA_DEN_Denver_Defn/AG_31C-31-L_REV-B.0_PWP.xml

WELLPATH LOCATION

	Local coordinates		Grid coordinates		Geographic coordinates	
	North[ft]	East[ft]	Easting[US ft]	Northing[US ft]	Latitude	Longitude
Slot Location	-87.74	-81.56	3196396.19	1407293.10	40°26'57.394"N	104°47'39.527"W
Facility Reference Pt			3196477.05	1407381.48	40°26'58.261"N	104°47'38.472"W
Field Reference Pt			3171284.48	1426358.81	40°30'07.643"N	104°53'02.634"W

WELLPATH DATUM

Calculation method	Minimum curvature	PRECISION 462 (20') (RKB) to Facility Vertical Datum	4724.00ft
Horizontal Reference Pt	Slot	PRECISION 462 (20') (RKB) to Mean Sea Level	4724.00ft
Vertical Reference Pt	PRECISION 462 (20') (RKB)	PRECISION 462 (20') (RKB) to Mud Line at Slot (SLOT#07 AG 31C-31-L (965'FNL & 531'FEL SEC 32))	4724.00ft
MD Reference Pt	PRECISION 462 (20') (RKB)	Section Origin	N 0.00, E 0.00 ft
Field Vertical Reference	Mean Sea Level	Section Azimuth	265.30°

Planned Wellpath Report

AG 31C-31-L REV-B.0 PWP

Page 2 of 10

REFERENCE WELLPATH IDENTIFICATION

Operator	SYNERGY RESOURCES CORPORATION	Slot	SLOT#07 AG 31C-31-L (965'FNL & 531'FEL SEC 32)
Area	COLORADO	Well	AG 31C-31-L
Field	WELD COUNTY (NAD83,TRUE NORTH)	Wellbore	AG 31C-31-L PWB
Facility	SEC.32-T06N-R66W		

WELLPATH DATA (198 stations) † = interpolated/extrapolated station

MD [ft]	Inclination [°]	Azimuth [°]	TVD [ft]	Vert Sect [ft]	North [ft]	East [ft]	DLS [°/100ft]	Comments
0.00†	0.000	108.303	0.00	0.00	0.00	0.00	0.00	
20.00	0.000	108.303	20.00	0.00	0.00	0.00	0.00	Tie On
120.00†	0.000	108.303	120.00	0.00	0.00	0.00	0.00	
200.00	0.000	108.303	200.00	0.00	0.00	0.00	0.00	End of Tangent
220.00†	0.400	108.303	220.00	-0.06	-0.02	0.07	2.00	
320.00†	2.400	108.303	319.96	-2.31	-0.79	2.39	2.00	
420.00†	4.400	108.303	419.78	-7.77	-2.65	8.02	2.00	
520.00†	6.400	108.303	519.33	-16.43	-5.61	16.95	2.00	
620.00†	8.400	108.303	618.50	-28.29	-9.65	29.18	2.00	
720.00†	10.400	108.303	717.15	-43.32	-14.78	44.68	2.00	
751.65	11.033	108.303	748.25	-48.74	-16.63	50.27	2.00	End of Build
820.00†	11.033	108.303	815.33	-60.78	-20.74	62.69	0.00	
920.00†	11.033	108.303	913.49	-78.39	-26.75	80.86	0.00	
1020.00†	11.033	108.303	1011.64	-96.01	-32.76	99.03	0.00	
1120.00†	11.033	108.303	1109.79	-113.62	-38.77	117.20	0.00	
1220.00†	11.033	108.303	1207.94	-131.24	-44.78	135.37	0.00	
1320.00†	11.033	108.303	1306.09	-148.85	-50.79	153.54	0.00	
1420.00†	11.033	108.303	1404.24	-166.47	-56.80	171.70	0.00	
1520.00†	11.033	108.303	1502.40	-184.09	-62.81	189.87	0.00	
1620.00†	11.033	108.303	1600.55	-201.70	-68.82	208.04	0.00	
1720.00†	11.033	108.303	1698.70	-219.32	-74.83	226.21	0.00	
1820.00†	11.033	108.303	1796.85	-236.93	-80.84	244.38	0.00	
1920.00†	11.033	108.303	1895.00	-254.55	-86.85	262.55	0.00	
2020.00†	11.033	108.303	1993.15	-272.16	-92.86	280.72	0.00	
2120.00†	11.033	108.303	2091.31	-289.78	-98.87	298.89	0.00	
2220.00†	11.033	108.303	2189.46	-307.39	-104.88	317.06	0.00	
2320.00†	11.033	108.303	2287.61	-325.01	-110.89	335.23	0.00	
2420.00†	11.033	108.303	2385.76	-342.62	-116.90	353.40	0.00	
2520.00†	11.033	108.303	2483.91	-360.24	-122.91	371.57	0.00	
2620.00†	11.033	108.303	2582.06	-377.85	-128.92	389.73	0.00	



Planned Wellpath Report

AG 31C-31-L REV-B.0 PWP

Page 3 of 10



REFERENCE WELLPATH IDENTIFICATION			
Operator	SYNERGY RESOURCES CORPORATION	Slot	SLOT#07 AG 31C-31-L (965'FNL & 531'FEL SEC 32)
Area	COLORADO	Well	AG 31C-31-L
Field	WELD COUNTY (NAD83,TRUE NORTH)	Wellbore	AG 31C-31-L PWB
Facility	SEC.32-T06N-R66W		

WELLPATH DATA (198 stations) † = interpolated/extrapolated station								
MD [ft]	Inclination [°]	Azimuth [°]	TVD [ft]	Vert Sect [ft]	North [ft]	East [ft]	DLS [°/100ft]	Comments
2720.00†	11.033	108.303	2680.22	-395.47	-134.93	407.90	0.00	
2820.00†	11.033	108.303	2778.37	-413.08	-140.94	426.07	0.00	
2920.00†	11.033	108.303	2876.52	-430.70	-146.95	444.24	0.00	
3020.00†	11.033	108.303	2974.67	-448.32	-152.96	462.41	0.00	
3120.00†	11.033	108.303	3072.82	-465.93	-158.97	480.58	0.00	
3220.00†	11.033	108.303	3170.98	-483.55	-164.98	498.75	0.00	
3320.00†	11.033	108.303	3269.13	-501.16	-170.99	516.92	0.00	
3420.00†	11.033	108.303	3367.28	-518.78	-177.00	535.09	0.00	
3520.00†	11.033	108.303	3465.43	-536.39	-183.01	553.26	0.00	
3620.00†	11.033	108.303	3563.58	-554.01	-189.02	571.43	0.00	
3720.00†	11.033	108.303	3661.73	-571.62	-195.03	589.60	0.00	
3820.00†	11.033	108.303	3759.89	-589.24	-201.04	607.77	0.00	
3920.00†	11.033	108.303	3858.04	-606.85	-207.05	625.93	0.00	
4020.00†	11.033	108.303	3956.19	-624.47	-213.06	644.10	0.00	
4120.00†	11.033	108.303	4054.34	-642.08	-219.07	662.27	0.00	
4220.00†	11.033	108.303	4152.49	-659.70	-225.08	680.44	0.00	
4320.00†	11.033	108.303	4250.64	-677.31	-231.09	698.61	0.00	
4420.00†	11.033	108.303	4348.80	-694.93	-237.10	716.78	0.00	
4520.00†	11.033	108.303	4446.95	-712.55	-243.11	734.95	0.00	
4620.00†	11.033	108.303	4545.10	-730.16	-249.12	753.12	0.00	
4720.00†	11.033	108.303	4643.25	-747.78	-255.13	771.29	0.00	
4820.00†	11.033	108.303	4741.40	-765.39	-261.14	789.46	0.00	
4920.00†	11.033	108.303	4839.55	-783.01	-267.15	807.63	0.00	
5020.00†	11.033	108.303	4937.71	-800.62	-273.16	825.80	0.00	
5120.00†	11.033	108.303	5035.86	-818.24	-279.17	843.97	0.00	
5220.00†	11.033	108.303	5134.01	-835.85	-285.18	862.13	0.00	
5320.00†	11.033	108.303	5232.16	-853.47	-291.19	880.30	0.00	
5420.00†	11.033	108.303	5330.31	-871.08	-297.20	898.47	0.00	
5520.00†	11.033	108.303	5428.46	-888.70	-303.21	916.64	0.00	
5620.00†	11.033	108.303	5526.62	-906.31	-309.22	934.81	0.00	



Planned Wellpath Report

AG 31C-31-L REV-B.0 PWP

Page 4 of 10



REFERENCE WELLPATH IDENTIFICATION			
Operator	SYNERGY RESOURCES CORPORATION	Slot	SLOT#07 AG 31C-31-L (965'FNL & 531'FEL SEC 32)
Area	COLORADO	Well	AG 31C-31-L
Field	WELD COUNTY (NAD83,TRUE NORTH)	Wellbore	AG 31C-31-L PWB
Facility	SEC.32-T06N-R66W		

WELLPATH DATA (198 stations) † = interpolated/extrapolated station								
MD [ft]	Inclination [°]	Azimuth [°]	TVD [ft]	Vert Sect [ft]	North [ft]	East [ft]	DLS [°/100ft]	Comments
5720.00†	11.033	108.303	5624.77	-923.93	-315.23	952.98	0.00	
5820.00†	11.033	108.303	5722.92	-941.54	-321.24	971.15	0.00	
5920.00†	11.033	108.303	5821.07	-959.16	-327.25	989.32	0.00	
6020.00†	11.033	108.303	5919.22	-976.78	-333.26	1007.49	0.00	
6120.00†	11.033	108.303	6017.37	-994.39	-339.27	1025.66	0.00	
6220.00†	11.033	108.303	6115.53	-1012.01	-345.28	1043.83	0.00	
6320.00†	11.033	108.303	6213.68	-1029.62	-351.29	1062.00	0.00	
6419.22	11.033	108.303	6311.07	-1047.10	-357.25	1080.02	0.00	End of Tangent
6420.00†	10.968	108.435	6311.83	-1047.24	-357.30	1080.16	9.00	
6520.00†	4.113	160.003	6410.99	-1056.95	-363.69	1090.44	9.00	
6620.00†	8.677	241.072	6510.50	-1051.00	-370.72	1085.05	9.00	
6720.00†	17.188	254.945	6607.89	-1029.55	-378.22	1064.14	9.00	
6820.00†	26.024	259.674	6700.78	-993.11	-386.01	1028.21	9.00	
6825.82†	26.542	259.857	6706.00	-990.54	-386.47	1025.68	9.00	SHARON SPRINGS
6866.74†	30.186	260.976	6742.00	-971.17	-389.69	1006.51	9.00	NIO-A
6920.00†	34.941	262.112	6786.87	-942.58	-393.89	978.16	9.00	
7019.92†	43.881	263.654	6864.00	-879.26	-401.66	915.27	9.00	NIO-B
7020.00†	43.888	263.655	6864.06	-879.21	-401.66	915.22	9.00	
7120.00†	52.850	264.763	6930.42	-804.55	-409.15	840.93	9.00	
7129.33†	53.686	264.853	6936.00	-797.08	-409.82	833.48	9.00	NIO-C
7220.00†	61.820	265.635	6984.34	-720.46	-416.15	757.12	9.00	
7320.00†	70.795	266.371	7024.48	-628.99	-422.51	665.87	9.00	
7330.96†	71.779	266.446	7028.00	-618.60	-423.16	655.50	9.00	FORT HAYS
7420.00†	79.772	267.030	7049.86	-532.40	-428.06	569.41	9.00	
7420.79†	79.843	267.035	7050.00	-531.62	-428.10	568.63	9.00	CODELL
7520.00†	88.751	267.652	7059.85	-433.06	-432.67	470.12	9.00	
7533.91	90.000	267.738	7060.00 ¹	-419.17	-433.23	456.22	9.00	End of 3D Arc
7620.00†	90.000	267.738	7060.00	-333.15	-436.63	370.20	0.00	
7720.00†	90.000	267.738	7060.00	-233.24	-440.57	270.27	0.00	
7820.00†	90.000	267.738	7060.00	-133.34	-444.52	170.35	0.00	



Planned Wellpath Report

AG 31C-31-L REV-B.0 PWP

Page 5 of 10



REFERENCE WELLPATH IDENTIFICATION

Operator	SYNERGY RESOURCES CORPORATION	Slot	SLOT#07 AG 31C-31-L (965'FNL & 531'FEL SEC 32)
Area	COLORADO	Well	AG 31C-31-L
Field	WELD COUNTY (NAD83,TRUE NORTH)	Wellbore	AG 31C-31-L PWB
Facility	SEC.32-T06N-R66W		

WELLPATH DATA (198 stations) † = interpolated/extrapolated station

MD [ft]	Inclination [°]	Azimuth [°]	TVD [ft]	Vert Sect [ft]	North [ft]	East [ft]	DLS [°/100ft]	Comments
7920.00†	90.000	267.738	7060.00	-33.43	-448.47	70.43	0.00	
8020.00†	90.000	267.738	7060.00	66.48	-452.41	-29.49	0.00	
8120.00†	90.000	267.738	7060.00	166.39	-456.36	-129.41	0.00	
8220.00†	90.000	267.738	7060.00	266.30	-460.31	-229.34	0.00	
8320.00†	90.000	267.738	7060.00	366.21	-464.26	-329.26	0.00	
8420.00†	90.000	267.738	7060.00	466.12	-468.20	-429.18	0.00	
8520.00†	90.000	267.738	7060.00	566.03	-472.15	-529.10	0.00	
8620.00†	90.000	267.738	7060.00	665.94	-476.10	-629.02	0.00	
8720.00†	90.000	267.738	7060.00	765.85	-480.04	-728.95	0.00	
8820.00†	90.000	267.738	7060.00	865.76	-483.99	-828.87	0.00	
8920.00†	90.000	267.738	7060.00	965.67	-487.94	-928.79	0.00	
9020.00†	90.000	267.738	7060.00	1065.58	-491.89	-1028.71	0.00	
9120.00†	90.000	267.738	7060.00	1165.49	-495.83	-1128.64	0.00	
9220.00†	90.000	267.738	7060.00	1265.39	-499.78	-1228.56	0.00	
9320.00†	90.000	267.738	7060.00	1365.30	-503.73	-1328.48	0.00	
9420.00†	90.000	267.738	7060.00	1465.21	-507.67	-1428.40	0.00	
9520.00†	90.000	267.738	7060.00	1565.12	-511.62	-1528.32	0.00	
9620.00†	90.000	267.738	7060.00	1665.03	-515.57	-1628.25	0.00	
9720.00†	90.000	267.738	7060.00	1764.94	-519.52	-1728.17	0.00	
9820.00†	90.000	267.738	7060.00	1864.85	-523.46	-1828.09	0.00	
9920.00†	90.000	267.738	7060.00	1964.76	-527.41	-1928.01	0.00	
10020.00†	90.000	267.738	7060.00	2064.67	-531.36	-2027.93	0.00	
10120.00†	90.000	267.738	7060.00	2164.58	-535.30	-2127.86	0.00	
10220.00†	90.000	267.738	7060.00	2264.49	-539.25	-2227.78	0.00	
10320.00†	90.000	267.738	7060.00	2364.40	-543.20	-2327.70	0.00	
10420.00†	90.000	267.738	7060.00	2464.31	-547.15	-2427.62	0.00	
10520.00†	90.000	267.738	7060.00	2564.22	-551.09	-2527.54	0.00	
10620.00†	90.000	267.738	7060.00	2664.13	-555.04	-2627.47	0.00	
10720.00†	90.000	267.738	7060.00	2764.03	-558.99	-2727.39	0.00	
10820.00†	90.000	267.738	7060.00	2863.94	-562.93	-2827.31	0.00	

Planned Wellpath Report

AG 31C-31-L REV-B.0 PWP

Page 6 of 10

REFERENCE WELLPATH IDENTIFICATION

Operator	SYNERGY RESOURCES CORPORATION	Slot	SLOT#07 AG 31C-31-L (965'FNL & 531'FEL SEC 32)
Area	COLORADO	Well	AG 31C-31-L
Field	WELD COUNTY (NAD83,TRUE NORTH)	Wellbore	AG 31C-31-L PWB
Facility	SEC.32-T06N-R66W		

WELLPATH DATA (198 stations) † = interpolated/extrapolated station

MD [ft]	Inclination [°]	Azimuth [°]	TVD [ft]	Vert Sect [ft]	North [ft]	East [ft]	DLS [°/100ft]	Comments
10920.00†	90.000	267.738	7060.00	2963.85	-566.88	-2927.23	0.00	
11020.00†	90.000	267.738	7060.00	3063.76	-570.83	-3027.15	0.00	
11120.00†	90.000	267.738	7060.00	3163.67	-574.78	-3127.08	0.00	
11220.00†	90.000	267.738	7060.00	3263.58	-578.72	-3227.00	0.00	
11320.00†	90.000	267.738	7060.00	3363.49	-582.67	-3326.92	0.00	
11420.00†	90.000	267.738	7060.00	3463.40	-586.62	-3426.84	0.00	
11520.00†	90.000	267.738	7060.00	3563.31	-590.56	-3526.76	0.00	
11620.00†	90.000	267.738	7060.00	3663.22	-594.51	-3626.69	0.00	
11720.00†	90.000	267.738	7060.00	3763.13	-598.46	-3726.61	0.00	
11820.00†	90.000	267.738	7060.00	3863.04	-602.41	-3826.53	0.00	
11920.00†	90.000	267.738	7060.00	3962.95	-606.35	-3926.45	0.00	
12020.00†	90.000	267.738	7060.00	4062.86	-610.30	-4026.38	0.00	
12120.00†	90.000	267.738	7060.00	4162.76	-614.25	-4126.30	0.00	
12220.00†	90.000	267.738	7060.00	4262.67	-618.19	-4226.22	0.00	
12320.00†	90.000	267.738	7060.00	4362.58	-622.14	-4326.14	0.00	
12420.00†	90.000	267.738	7060.00	4462.49	-626.09	-4426.06	0.00	
12520.00†	90.000	267.738	7060.00	4562.40	-630.04	-4525.99	0.00	
12620.00†	90.000	267.738	7060.00	4662.31	-633.98	-4625.91	0.00	
12720.00†	90.000	267.738	7060.00	4762.22	-637.93	-4725.83	0.00	
12820.00†	90.000	267.738	7060.00	4862.13	-641.88	-4825.75	0.00	
12920.00†	90.000	267.738	7060.00	4962.04	-645.82	-4925.67	0.00	
13020.00†	90.000	267.738	7060.00	5061.95	-649.77	-5025.60	0.00	
13120.00†	90.000	267.738	7060.00	5161.86	-653.72	-5125.52	0.00	
13220.00†	90.000	267.738	7060.00	5261.77	-657.67	-5225.44	0.00	
13320.00†	90.000	267.738	7060.00	5361.68	-661.61	-5325.36	0.00	
13420.00†	90.000	267.738	7060.00	5461.59	-665.56	-5425.28	0.00	
13520.00†	90.000	267.738	7060.00	5561.50	-669.51	-5525.21	0.00	
13620.00†	90.000	267.738	7060.00	5661.40	-673.45	-5625.13	0.00	
13720.00†	90.000	267.738	7060.00	5761.31	-677.40	-5725.05	0.00	
13820.00†	90.000	267.738	7060.00	5861.22	-681.35	-5824.97	0.00	



Planned Wellpath Report

AG 31C-31-L REV-B.0 PWP

Page 7 of 10



REFERENCE WELLPATH IDENTIFICATION

Operator	SYNERGY RESOURCES CORPORATION	Slot	SLOT#07 AG 31C-31-L (965'FNL & 531'FEL SEC 32)
Area	COLORADO	Well	AG 31C-31-L
Field	WELD COUNTY (NAD83,TRUE NORTH)	Wellbore	AG 31C-31-L PWB
Facility	SEC.32-T06N-R66W		

WELLPATH DATA (198 stations) † = interpolated/extrapolated station

MD [ft]	Inclination [°]	Azimuth [°]	TVD [ft]	Vert Sect [ft]	North [ft]	East [ft]	DLS [°/100ft]	Comments
13920.00†	90.000	267.738	7060.00	5961.13	-685.30	-5924.89	0.00	
14020.00†	90.000	267.738	7060.00	6061.04	-689.24	-6024.82	0.00	
14120.00†	90.000	267.738	7060.00	6160.95	-693.19	-6124.74	0.00	
14220.00†	90.000	267.738	7060.00	6260.86	-697.14	-6224.66	0.00	
14320.00†	90.000	267.738	7060.00	6360.77	-701.08	-6324.58	0.00	
14420.00†	90.000	267.738	7060.00	6460.68	-705.03	-6424.50	0.00	
14520.00†	90.000	267.738	7060.00	6560.59	-708.98	-6524.43	0.00	
14620.00†	90.000	267.738	7060.00	6660.50	-712.93	-6624.35	0.00	
14720.00†	90.000	267.738	7060.00	6760.41	-716.87	-6724.27	0.00	
14820.00†	90.000	267.738	7060.00	6860.32	-720.82	-6824.19	0.00	
14920.00†	90.000	267.738	7060.00	6960.23	-724.77	-6924.12	0.00	
15020.00†	90.000	267.738	7060.00	7060.13	-728.71	-7024.04	0.00	
15120.00†	90.000	267.738	7060.00	7160.04	-732.66	-7123.96	0.00	
15220.00†	90.000	267.738	7060.00	7259.95	-736.61	-7223.88	0.00	
15320.00†	90.000	267.738	7060.00	7359.86	-740.56	-7323.80	0.00	
15420.00†	90.000	267.738	7060.00	7459.77	-744.50	-7423.73	0.00	
15520.00†	90.000	267.738	7060.00	7559.68	-748.45	-7523.65	0.00	
15620.00†	90.000	267.738	7060.00	7659.59	-752.40	-7623.57	0.00	
15720.00†	90.000	267.738	7060.00	7759.50	-756.34	-7723.49	0.00	
15820.00†	90.000	267.738	7060.00	7859.41	-760.29	-7823.41	0.00	
15920.00†	90.000	267.738	7060.00	7959.32	-764.24	-7923.34	0.00	
16020.00†	90.000	267.738	7060.00	8059.23	-768.19	-8023.26	0.00	
16120.00†	90.000	267.738	7060.00	8159.14	-772.13	-8123.18	0.00	
16220.00†	90.000	267.738	7060.00	8259.05	-776.08	-8223.10	0.00	
16320.00†	90.000	267.738	7060.00	8358.96	-780.03	-8323.02	0.00	
16420.00†	90.000	267.738	7060.00	8458.86	-783.97	-8422.95	0.00	
16520.00†	90.000	267.738	7060.00	8558.77	-787.92	-8522.87	0.00	
16620.00†	90.000	267.738	7060.00	8658.68	-791.87	-8622.79	0.00	
16720.00†	90.000	267.738	7060.00	8758.59	-795.82	-8722.71	0.00	
16820.00†	90.000	267.738	7060.00	8858.50	-799.76	-8822.63	0.00	



Planned Wellpath Report

AG 31C-31-L REV-B.0 PWP

Page 8 of 10



REFERENCE WELLPATH IDENTIFICATION

Operator	SYNERGY RESOURCES CORPORATION	Slot	SLOT#07 AG 31C-31-L (965'FNL & 531'FEL SEC 32)
Area	COLORADO	Well	AG 31C-31-L
Field	WELD COUNTY (NAD83,TRUE NORTH)	Wellbore	AG 31C-31-L PWB
Facility	SEC.32-T06N-R66W		

WELLPATH DATA (198 stations) † = interpolated/extrapolated station

MD [ft]	Inclination [°]	Azimuth [°]	TVD [ft]	Vert Sect [ft]	North [ft]	East [ft]	DLS [°/100ft]	Comments
16920.00†	90.000	267.738	7060.00	8958.41	-803.71	-8922.56	0.00	
17020.00†	90.000	267.738	7060.00	9058.32	-807.66	-9022.48	0.00	
17120.00†	90.000	267.738	7060.00	9158.23	-811.60	-9122.40	0.00	
17220.00†	90.000	267.738	7060.00	9258.14	-815.55	-9222.32	0.00	
17320.00†	90.000	267.738	7060.00	9358.05	-819.50	-9322.24	0.00	
17420.00†	90.000	267.738	7060.00	9457.96	-823.45	-9422.17	0.00	
17520.00†	90.000	267.738	7060.00	9557.87	-827.39	-9522.09	0.00	
17620.00†	90.000	267.738	7060.00	9657.78	-831.34	-9622.01	0.00	
17720.00†	90.000	267.738	7060.00	9757.69	-835.29	-9721.93	0.00	
17820.00†	90.000	267.738	7060.00	9857.60	-839.24	-9821.86	0.00	
17920.00†	90.000	267.738	7060.00	9957.50	-843.18	-9921.78	0.00	
18020.00†	90.000	267.738	7060.00	10057.41	-847.13	-10021.70	0.00	
18120.00†	90.000	267.738	7060.00	10157.32	-851.08	-10121.62	0.00	
18220.00†	90.000	267.738	7060.00	10257.23	-855.02	-10221.54	0.00	
18320.00†	90.000	267.738	7060.00	10357.14	-858.97	-10321.47	0.00	
18420.00†	90.000	267.738	7060.00	10457.05	-862.92	-10421.39	0.00	
18520.00†	90.000	267.738	7060.00	10556.96	-866.87	-10521.31	0.00	
18552.63	90.000	267.738	7060.00 ²	10589.56	-868.15	-10553.91	0.00	End of Tangent

HOLE & CASING SECTIONS - Ref Wellbore: AG 31C-31-L PWB Ref Wellpath: AG 31C-31-L REV-B.0 PWP

String/Diameter	Start MD [ft]	End MD [ft]	Interval [ft]	Start TVD [ft]	End TVD [ft]	Start N/S [ft]	Start E/W [ft]	End N/S [ft]	End E/W [ft]
13.5in Open Hole	20.00	1800.00	1780.00	20.00	1777.22	0.00	0.00	-79.63	240.75
8.5in Open Hole	1800.00	18552.63	16752.63	1777.22	7060.00	-79.63	240.75	-868.15	-10553.91



Planned Wellpath Report

AG 31C-31-L REV-B.0 PWP

Page 9 of 10



REFERENCE WELLPATH IDENTIFICATION

Operator	SYNERGY RESOURCES CORPORATION	Slot	SLOT#07 AG 31C-31-L (965'FNL & 531'FEL SEC 32)
Area	COLORADO	Well	AG 31C-31-L
Field	WELD COUNTY (NAD83,TRUE NORTH)	Wellbore	AG 31C-31-L PWB
Facility	SEC.32-T06N-R66W		

TARGETS

Name	MD [ft]	TVD [ft]	North [ft]	East [ft]	Grid East [US ft]	Grid North [US ft]	Latitude	Longitude	Shape
SEC.31-T06N-R66W		-20.00	87.74	81.56	3196477.05	1407381.48	40°26'58.261"N	104°47'38.472"W	polygon
SEC.32-T06N-R66W		-20.00	87.74	81.56	3196477.05	1407381.48	40°26'58.261"N	104°47'38.472"W	polygon
2) AG 31C-31-L BHL REV-1 ON PLAT (CDLL, 1392'FNL & 75'FWL SEC 31)	18552.63	7060.00	-868.15	-10553.91	3185849.93	1406341.02	40°26'48.793"N	104°49'56.035"W	circle
1) AG 31C-31-L TOP OF PROD (1410'FNL & 75'FEL SEC 32)	7533.91	7060.00	-433.23	456.22	3196855.82	1406863.54	40°26'53.113"N	104°47'33.626"W	circle

SURVEY PROGRAM - Ref Wellbore: AG 31C-31-L PWB Ref Wellpath: AG 31C-31-L REV-B.0 PWP

Start MD [ft]	End MD [ft]	Positional Uncertainty Model	Log Name/Comment	Wellbore
20.00	1800.00	Custom BHI NaviTrak (Standard Rotating+Axial Corr) (Rockies 0.03Gt model)		AG 31C-31-L PWB
1800.00	18553.00	Custom BHI AutoTrak Curve (Short) (Rockies 0.03Gt model)		AG 31C-31-L PWB



Planned Wellpath Report

AG 31C-31-L REV-B.0 PWP

Page 10 of 10



REFERENCE WELLPATH IDENTIFICATION

Operator	SYNERGY RESOURCES CORPORATION	Slot	SLOT#07 AG 31C-31-L (965'FNL & 531'FEL SEC 32)
Area	COLORADO	Well	AG 31C-31-L
Field	WELD COUNTY (NAD83,TRUE NORTH)	Wellbore	AG 31C-31-L PWB
Facility	SEC.32-T06N-R66W		

WELLPATH COMMENTS

MD [ft]	Inclination [°]	Azimuth [°]	TVD [ft]	Comment
6825.82	26.542	259.857	6706.00	SHARON SPRINGS
6866.74	30.186	260.976	6742.00	NIO-A
7019.92	43.881	263.654	6864.00	NIO-B
7129.33	53.686	264.853	6936.00	NIO-C
7330.96	71.779	266.446	7028.00	FORT HAYS
7420.79	79.843	267.035	7050.00	CODELL