

SYNERGY RESOURCES CORPORATION

Location:	COLORADO	Slot:	SLOT#12 AG 32N-31C-L (1037'FNL & 599'FEL SEC 32)
Field:	WELD COUNTY (NAD83,TRUE NORTH)	Well:	AG 32N-31C-L
Facility:	SEC.32-T06N-R66W	Wellbore:	AG 32N-31C-L PWB
Plot reference wellpath is AG 32N-31C-L REV-B.0 PWP			
True vertical depths are referenced to PRECISION 462 (20) (RKB)		Grid System: NAD83 / Lambert Colorado SP, Northern Zone (501), US feet	
Measured depths are referenced to PRECISION 462 (20) (RKB)		" = Wellpath was transformed from a different geodetic datum	
PRECISION 462 (20) (RKB) to Mean Sea Level: 4724 feet		North Reference: True north	
Mean Sea Level to Mud line (At Slot: SLOT#12 AG 32N-31C-L (1037'FNL & 599'FEL SEC 32)): 0 feet		Scale: True distance	
Coordinates are in feet referenced to Slot		Depths are in feet	
		Created by: wagnjam on 2016-09-26	
		Database: WA_DEN_Denver_Defn	

Location Information				
Facility Name		Grid East (US ft)	Grid North (US ft)	Latitude
SEC.32-T06N-R66W		3196477.049	1407381.484	40°26'58.261"N
Slot	Local N (ft)	Local E (ft)	Grid East (US ft)	Grid North (US ft)
SLOT#12 AG 32N-31C-L (1037'FNL & 599'FEL SEC 32)	-161.01	-149.75	3196328.590	1407219.296
PRECISION 462 (20) (RKB) to Mud line (At Slot: SLOT#12 AG 32N-31C-L (1037'FNL & 599'FEL SEC 32))				4724ft
Mean Sea Level to Mud line (At Slot: SLOT#12 AG 32N-31C-L (1037'FNL & 599'FEL SEC 32))				0ft
PRECISION 462 (20) (RKB) to Mean Sea Level				4724ft

Wellpath Comments							
MD (ft)	X (ft)	Y (ft)	TVD (ft)	Inclination (°)	Azimuth (°)	VS (ft)	Comment
7013.16	1036.65	-1378.86	6723.00	38.110	250.170	-775.26	SHARON SPRINGS
7060.22	1007.94	-1388.52	6759.00	42.064	252.529	-745.29	NIO-A
7251.62	865.52	-1423.05	6881.00	58.480	259.391	-599.00	NIO-B
7431.22	703.32	-1446.51	6953.00	74.118	263.878	-435.21	NIO-C

Well Profile Data

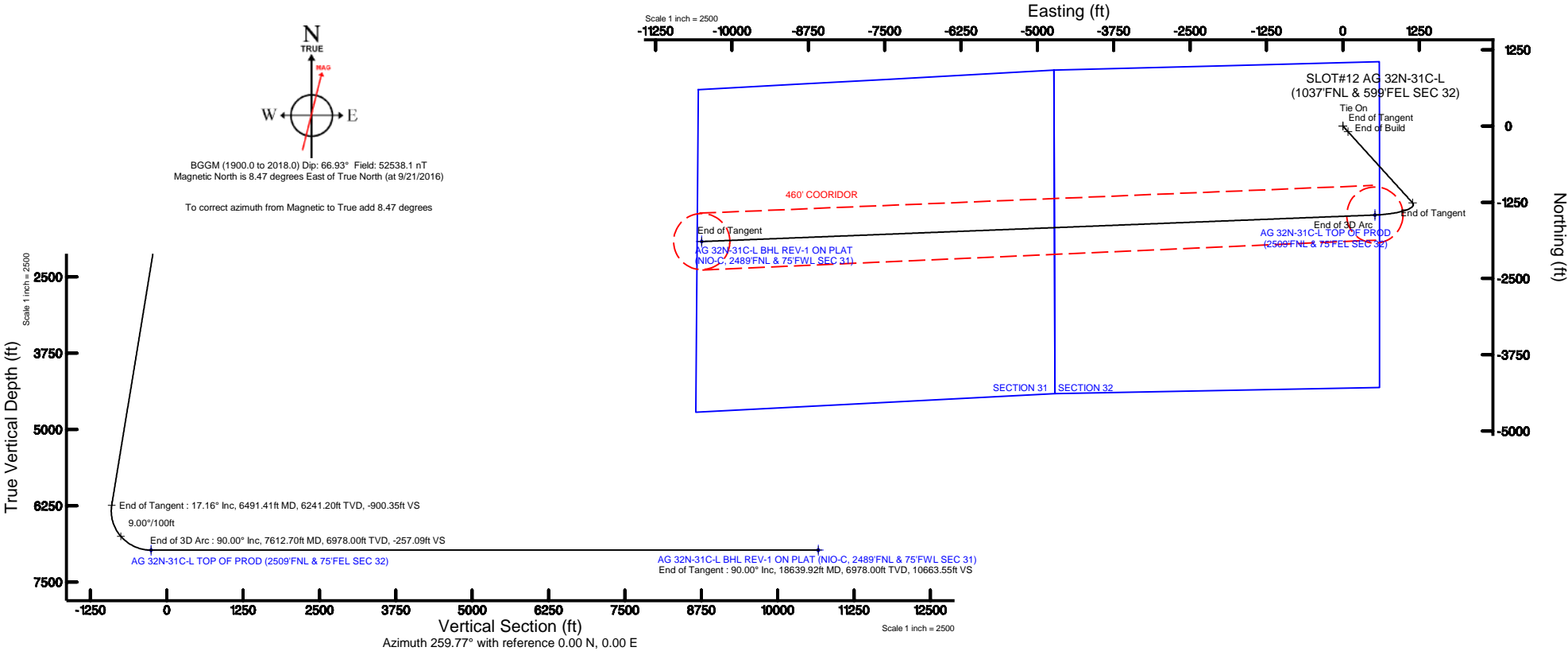
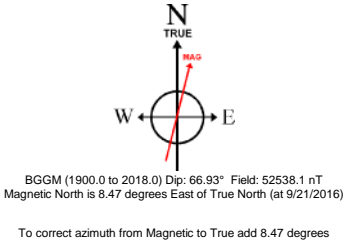
Design Comment	MD (ft)	Inc (°)	Az (°)	TVD (ft)	Local N (ft)	Local E (ft)	DLS (°/100ft)	VS (ft)
Tie On	20.00	0.000	137.814	20.00	0.00	0.00	0.00	0.00
End of Tangent	300.00	0.000	137.814	300.00	0.00	0.00	0.00	0.00
End of Build	1158.04	17.161	137.814	1145.26	-94.50	85.65	2.00	-67.50
End of Tangent	6491.41	17.161	137.814	6241.20	-1260.51	1142.40	0.00	-900.35
End of 3D Arc	7612.70	90.000	267.742	6978.00	-1459.48	524.66	9.00	-257.09
End of Tangent	18639.92	90.000	267.742	6978.00	-1894.03	-10494.00	0.00	10663.55

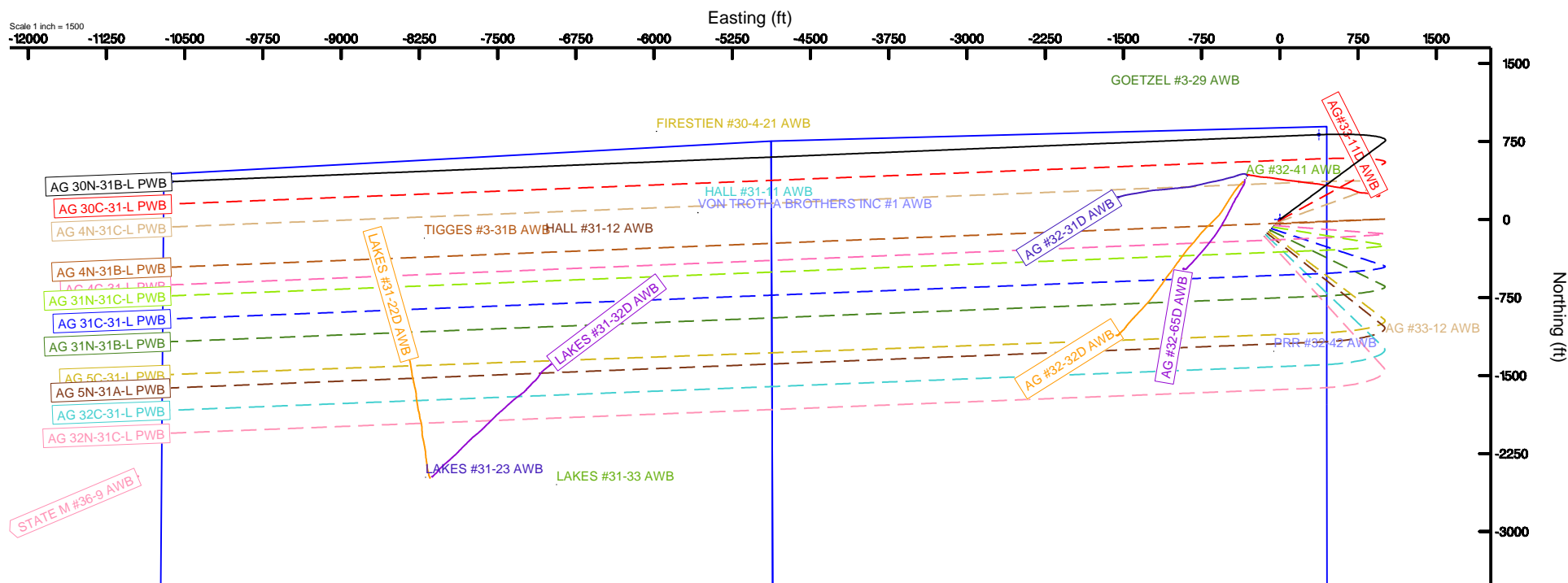
Targets

Name	MD (ft)	TVD (ft)	Local N (ft)	Local E (ft)	Grid East (US ft)	Grid North (US ft)	Latitude	Longitude
SEC.31-T06N-R66W		-20.00	161.01	149.75	3196477.05	1407381.48	40°26'58.261"N	104°47'38.472"W
SEC.32-T06N-R66W		20.00	161.01	149.75	3196477.05	1407381.48	40°26'58.261"N	104°47'38.472"W
AG 32N-31C-L BHL REV-1 ON PLAT (NIO-C, 2489'FNL & 75'FWL SEC 31)	18639.92	6978.00	-1894.03	-10494.00	3185850.40	1405241.92	40°26'37.532"N	104°49'56.136"W
AG 32N-31C-L TOP OF PROD (2509'FNL & 75'FEL SEC 32)	7612.70	6978.00	-1459.48	524.66	3196964.83	1405764.09	40°26'42.248"N	104°47'33.623"W

Tie-On Position

MD (ft)	Inc (°)	Az (°)	TVD (ft)	Local N (ft)	Local E (ft)	Grid East (US ft)	Grid North (US ft)	Latitude	Longitude
20.00	0.000	137.814	20.00	0.00	0.00	3196328.59	1407219.30	40°26'56.670"N	104°47'40.409"W





# AG\_32N-31C-L\_REV-B.0\_PWP.las

## ~VERSION INFORMATION

VERS. 2.0 : CWLS LOG ASCII STANDARD-VERSION 2.0

WRAP. NO : ASCII DATA SECTION CONTAINS ONE ROW PER WELLPATH STATION

## ~WELL INFORMATION

#MNEM	.UNITS	DATA	:DESCRIPTION
#-----	.-----	----	:-----
STRT	.ft	0.00	:START MD
STOP	.ft	18639.92	:STOP MD
STEP	.ft	0.0	:STEP (non-uniform increment)
NULL	.	-999.99	:NULL
COMP	.	SYNERGY RESOURCES CORPORATION	:OPERATOR
WELL	.	AG 32N-31C-L	:WELL
FLD	.	WELD COUNTY (NAD83,TRUE NORTH)	:FIELD
LOC	.	COLORADO	:AREA (aka: Location)
CNTY	.	N/A	:COUNTY
STAT	.	N/A	:STATE
CTRY	.	N/A	:COUNTRY
SRVC	.	Baker Hughes	:CONTRACTOR
DATE	.	09/21/2016	:LOG REV DATE
API	.		:API NUMBER

## ~OTHER INFORMATION

#Software: WellArchitect(R) Version 5.0

#MNEM	.UNITS	DATA	:DESCRIPTION
#-----	.-----	----	:-----
WPTYPE	.	PLANNED WELLPATH	:WELLPATH TYPE
FACILITY	.	SEC.32-T06N-R66W	:FACILITY
SLOT	.	SLOT#12 AG 32N-31C-L (1037'FNL & 599'FEL SEC 32)	:SLOT
WELLBORE	.	AG 32N-31C-L PWB	:WELLBORE
WELLPATH	.	AG 32N-31C-L REV-B.0 PWP	:WELLPATH
MDREFPT	.	PRECISION 462 (20') (RKB)	:MD REFERENCE POINT
TVDREFPT	.	PRECISION 462 (20') (RKB)	:TVD REFERENCE POINT
LCLREFPT	.	S1ot	:LOCAL COORDINATE REFERENCE PT
VSAZIMUTH	.deg	259.77	:VERTICAL SECTION AZIMUTH
VSORIGN	.ft	0.00	:VERTICAL SECTION ORIGIN NORTH
VSORIGE	.ft	0.00	:VERTICAL SECTION ORIGIN EAST

## ~CURVE (WELLPATH) INFORMATION

#MNEM	.UNITS	:DESCRIPTION
#-----	.-----	:-----
DEPT	.ft	:MEASURED DEPTH
INC	.deg	:INCLINATION
AZI	.deg	:AZIMUTH
TVD	.ft	:TRUE VERTICAL DEPTH
SECT	.ft	:CROSS SECTION (CURTAIN/VERTICAL)
LOCALN	.ft	:LOCAL NORTH
LOCALE	.ft	:LOCAL EAST

## AG\_32N-31C-L-REV-B.0\_PWP.1as

LAT .deg :LATITUDE  
 LONG .deg :LONGITUDE  
 DLS .deg/100ft :DOGLEG SEVERITY

## ~ASCII DATA

0.00	0.00	137.81	0.00	0.00	0.00	0.00	40.4490750	-104.7945581	0.00
20.00	0.00	137.81	20.00	0.00	0.00	0.00	40.4490750	-104.7945581	0.00
120.00	0.00	137.81	120.00	0.00	0.00	0.00	40.4490750	-104.7945581	0.00
220.00	0.00	137.81	220.00	0.00	0.00	0.00	40.4490750	-104.7945581	0.00
300.00	0.00	137.81	300.00	0.00	0.00	0.00	40.4490750	-104.7945581	0.00
320.00	0.40	137.81	320.00	-0.04	-0.05	0.05	40.4490749	-104.7945579	2.00
420.00	2.40	137.81	419.96	-1.33	-1.86	1.69	40.4490699	-104.7945520	2.00
520.00	4.40	137.81	519.78	-4.47	-6.26	5.67	40.4490578	-104.7945377	2.00
620.00	6.40	137.81	619.33	-9.45	-13.23	11.99	40.4490387	-104.7945150	2.00
720.00	8.40	137.81	718.50	-16.27	-22.77	20.64	40.4490125	-104.7944839	2.00
820.00	10.40	137.81	817.15	-24.91	-34.87	31.61	40.4489793	-104.7944445	2.00
920.00	12.40	137.81	915.17	-35.37	-49.52	44.88	40.4489391	-104.7943968	2.00
1020.00	14.40	137.81	1012.44	-47.63	-66.69	60.44	40.4488919	-104.7943409	2.00
1120.00	16.40	137.81	1108.85	-61.69	-86.36	78.27	40.4488379	-104.7942768	2.00
1158.04	17.16	137.81	1145.26	-67.50	-94.50	85.65	40.4488156	-104.7942503	2.00
1220.00	17.16	137.81	1204.47	-77.18	-108.05	97.92	40.4487784	-104.7942062	0.00
1320.00	17.16	137.81	1300.02	-92.79	-129.91	117.74	40.4487184	-104.7941350	0.00
1420.00	17.16	137.81	1395.57	-108.41	-151.77	137.55	40.4486584	-104.7940638	0.00
1520.00	17.16	137.81	1491.11	-124.02	-173.64	157.37	40.4485984	-104.7939926	0.00
1620.00	17.16	137.81	1586.66	-139.64	-195.50	177.18	40.4485384	-104.7939215	0.00
1720.00	17.16	137.81	1682.21	-155.26	-217.36	196.99	40.4484784	-104.7938503	0.00
1820.00	17.16	137.81	1777.76	-170.87	-239.22	216.81	40.4484184	-104.7937791	0.00
1920.00	17.16	137.81	1873.31	-186.49	-261.09	236.62	40.4483584	-104.7937079	0.00
2020.00	17.16	137.81	1968.85	-202.10	-282.95	256.44	40.4482983	-104.7936367	0.00
2120.00	17.16	137.81	2064.40	-217.72	-304.81	276.25	40.4482383	-104.7935655	0.00
2220.00	17.16	137.81	2159.95	-233.33	-326.67	296.06	40.4481783	-104.7934943	0.00
2320.00	17.16	137.81	2255.50	-248.95	-348.53	315.88	40.4481183	-104.7934231	0.00
2420.00	17.16	137.81	2351.05	-264.57	-370.40	335.69	40.4480583	-104.7933519	0.00
2520.00	17.16	137.81	2446.60	-280.18	-392.26	355.51	40.4479983	-104.7932807	0.00
2620.00	17.16	137.81	2542.14	-295.80	-414.12	375.32	40.4479383	-104.7932096	0.00
2720.00	17.16	137.81	2637.69	-311.41	-435.98	395.14	40.4478783	-104.7931384	0.00
2820.00	17.16	137.81	2733.24	-327.03	-457.85	414.95	40.4478183	-104.7930672	0.00
2920.00	17.16	137.81	2828.79	-342.65	-479.71	434.76	40.4477582	-104.7929960	0.00
3020.00	17.16	137.81	2924.34	-358.26	-501.57	454.58	40.4476982	-104.7929248	0.00
3120.00	17.16	137.81	3019.88	-373.88	-523.43	474.39	40.4476382	-104.7928536	0.00
3220.00	17.16	137.81	3115.43	-389.49	-545.30	494.21	40.4475782	-104.7927824	0.00
3320.00	17.16	137.81	3210.98	-405.11	-567.16	514.02	40.4475182	-104.7927112	0.00
3420.00	17.16	137.81	3306.53	-420.72	-589.02	533.83	40.4474582	-104.7926400	0.00
3520.00	17.16	137.81	3402.08	-436.34	-610.88	553.65	40.4473982	-104.7925689	0.00
3620.00	17.16	137.81	3497.62	-451.96	-632.75	573.46	40.4473382	-104.7924977	0.00
3720.00	17.16	137.81	3593.17	-467.57	-654.61	593.28	40.4472782	-104.7924265	0.00
3820.00	17.16	137.81	3688.72	-483.19	-676.47	613.09	40.4472181	-104.7923553	0.00
3920.00	17.16	137.81	3784.27	-498.80	-698.33	632.90	40.4471581	-104.7922841	0.00

AG\_32N-31C-L\_REV-B.0\_PWP.las

4020.00	17.16	137.81	3879.82	-514.42	-720.20	652.72	40.4470981	-104.7922129	0.00
4120.00	17.16	137.81	3975.37	-530.04	-742.06	672.53	40.4470381	-104.7921417	0.00
4220.00	17.16	137.81	4070.91	-545.65	-763.92	692.35	40.4469781	-104.7920705	0.00
4320.00	17.16	137.81	4166.46	-561.27	-785.78	712.16	40.4469181	-104.7919994	0.00
4420.00	17.16	137.81	4262.01	-576.88	-807.65	731.97	40.4468581	-104.7919282	0.00
4520.00	17.16	137.81	4357.56	-592.50	-829.51	751.79	40.4467981	-104.7918570	0.00
4620.00	17.16	137.81	4453.11	-608.12	-851.37	771.60	40.4467381	-104.7917858	0.00
4720.00	17.16	137.81	4548.65	-623.73	-873.23	791.42	40.4466780	-104.7917146	0.00
4820.00	17.16	137.81	4644.20	-639.35	-895.10	811.23	40.4466180	-104.7916434	0.00
4920.00	17.16	137.81	4739.75	-654.96	-916.96	831.04	40.4465580	-104.7915722	0.00
5020.00	17.16	137.81	4835.30	-670.58	-938.82	850.86	40.4464980	-104.7915010	0.00
5120.00	17.16	137.81	4930.85	-686.19	-960.68	870.67	40.4464380	-104.7914299	0.00
5220.00	17.16	137.81	5026.39	-701.81	-982.54	890.49	40.4463780	-104.7913587	0.00
5320.00	17.16	137.81	5121.94	-717.43	-1004.41	910.30	40.4463180	-104.7912875	0.00
5420.00	17.16	137.81	5217.49	-733.04	-1026.27	930.11	40.4462580	-104.7912163	0.00
5520.00	17.16	137.81	5313.04	-748.66	-1048.13	949.93	40.4461980	-104.7911451	0.00
5620.00	17.16	137.81	5408.59	-764.27	-1069.99	969.74	40.4461379	-104.7910739	0.00
5720.00	17.16	137.81	5504.13	-779.89	-1091.86	989.56	40.4460779	-104.7910027	0.00
5820.00	17.16	137.81	5599.68	-795.51	-1113.72	1009.37	40.4460179	-104.7909316	0.00
5920.00	17.16	137.81	5695.23	-811.12	-1135.58	1029.18	40.4459579	-104.7908604	0.00
6020.00	17.16	137.81	5790.78	-826.74	-1157.44	1049.00	40.4458979	-104.7907892	0.00
6120.00	17.16	137.81	5886.33	-842.35	-1179.31	1068.81	40.4458379	-104.7907180	0.00
6220.00	17.16	137.81	5981.88	-857.97	-1201.17	1088.63	40.4457779	-104.7906468	0.00
6320.00	17.16	137.81	6077.42	-873.58	-1223.03	1108.44	40.4457179	-104.7905756	0.00
6420.00	17.16	137.81	6172.97	-889.20	-1244.89	1128.25	40.4456578	-104.7905045	0.00
6491.41	17.16	137.81	6241.20	-900.35	-1260.51	1142.40	40.4456150	-104.7904536	0.00
6520.00	15.68	145.27	6268.63	-904.19	-1266.81	1147.44	40.4455977	-104.7904355	9.00
6620.00	13.34	180.59	6365.62	-907.63	-1289.49	1155.03	40.4455354	-104.7904083	9.00
6720.00	16.40	214.19	6462.43	-895.56	-1312.76	1146.96	40.4454716	-104.7904372	9.00
6820.00	22.79	233.43	6556.69	-868.27	-1336.02	1123.43	40.4454077	-104.7905218	9.00
6920.00	30.47	244.01	6646.07	-826.42	-1358.72	1085.01	40.4453454	-104.7906598	9.00
7020.00	38.68	250.54	6728.36	-771.07	-1380.29	1032.65	40.4452862	-104.7908480	9.00
7120.00	47.15	255.05	6801.55	-703.55	-1400.20	967.64	40.4452316	-104.7910815	9.00
7220.00	55.74	258.46	6863.83	-625.55	-1417.95	891.58	40.4451828	-104.7913548	9.00
7320.00	64.42	261.23	6913.67	-538.97	-1433.13	806.34	40.4451412	-104.7916611	9.00
7420.00	73.14	263.63	6949.84	-445.95	-1445.34	714.02	40.4451077	-104.7919927	9.00
7520.00	81.88	265.81	6971.44	-348.79	-1454.29	616.90	40.4450831	-104.7923417	9.00
7612.70	90.00	267.74	6978.00	-257.09	-1459.48	524.66	40.4450689	-104.7926731	9.00
7620.00	90.00	267.74	6978.00	-249.86	-1459.77	517.37	40.4450681	-104.7926993	0.00
7720.00	90.00	267.74	6978.00	-150.83	-1463.71	417.44	40.4450573	-104.7930583	0.00
7820.00	90.00	267.74	6978.00	-51.79	-1467.65	317.52	40.4450465	-104.7934173	0.00
7920.00	90.00	267.74	6978.00	47.24	-1471.59	217.60	40.4450357	-104.7937763	0.00
8020.00	90.00	267.74	6978.00	146.27	-1475.53	117.68	40.4450248	-104.7941353	0.00
8120.00	90.00	267.74	6978.00	245.31	-1479.47	17.75	40.4450140	-104.7944943	0.00
8220.00	90.00	267.74	6978.00	344.34	-1483.41	-82.17	40.4450032	-104.7948533	0.00
8320.00	90.00	267.74	6978.00	443.37	-1487.35	-182.09	40.4449924	-104.7952123	0.00
8420.00	90.00	267.74	6978.00	542.41	-1491.29	-282.01	40.4449816	-104.7955713	0.00
8520.00	90.00	267.74	6978.00	641.44	-1495.23	-381.93	40.4449708	-104.7959303	0.00

AG\_32N-31C-L\_REV-B.0\_PWP.las

8620.00	90.00	267.74	6978.00	740.47	-1499.18	-481.86	40.4449599	-104.7962893	0.00
8720.00	90.00	267.74	6978.00	839.51	-1503.12	-581.78	40.4449491	-104.7966483	0.00
8820.00	90.00	267.74	6978.00	938.54	-1507.06	-681.70	40.4449383	-104.7970073	0.00
8920.00	90.00	267.74	6978.00	1037.57	-1511.00	-781.62	40.4449275	-104.7973663	0.00
9020.00	90.00	267.74	6978.00	1136.61	-1514.94	-881.55	40.4449166	-104.7977252	0.00
9120.00	90.00	267.74	6978.00	1235.64	-1518.88	-981.47	40.4449058	-104.7980842	0.00
9220.00	90.00	267.74	6978.00	1334.67	-1522.82	-1081.39	40.4448950	-104.7984432	0.00
9320.00	90.00	267.74	6978.00	1433.71	-1526.76	-1181.31	40.4448842	-104.7988022	0.00
9420.00	90.00	267.74	6978.00	1532.74	-1530.70	-1281.24	40.4448733	-104.7991612	0.00
9520.00	90.00	267.74	6978.00	1631.78	-1534.64	-1381.16	40.4448625	-104.7995202	0.00
9620.00	90.00	267.74	6978.00	1730.81	-1538.58	-1481.08	40.4448517	-104.7998792	0.00
9720.00	90.00	267.74	6978.00	1829.84	-1542.52	-1581.00	40.4448408	-104.8002382	0.00
9820.00	90.00	267.74	6978.00	1928.88	-1546.46	-1680.92	40.4448300	-104.8005972	0.00
9920.00	90.00	267.74	6978.00	2027.91	-1550.40	-1780.85	40.4448192	-104.8009562	0.00
10020.00	90.00	267.74	6978.00	2126.94	-1554.35	-1880.77	40.4448083	-104.8013152	0.00
10120.00	90.00	267.74	6978.00	2225.98	-1558.29	-1980.69	40.4447975	-104.8016742	0.00
10220.00	90.00	267.74	6978.00	2325.01	-1562.23	-2080.61	40.4447866	-104.8020332	0.00
10320.00	90.00	267.74	6978.00	2424.04	-1566.17	-2180.54	40.4447758	-104.8023922	0.00
10420.00	90.00	267.74	6978.00	2523.08	-1570.11	-2280.46	40.4447650	-104.8027512	0.00
10520.00	90.00	267.74	6978.00	2622.11	-1574.05	-2380.38	40.4447541	-104.8031102	0.00
10620.00	90.00	267.74	6978.00	2721.14	-1577.99	-2480.30	40.4447433	-104.8034692	0.00
10720.00	90.00	267.74	6978.00	2820.18	-1581.93	-2580.23	40.4447324	-104.8038282	0.00
10820.00	90.00	267.74	6978.00	2919.21	-1585.87	-2680.15	40.4447216	-104.8041872	0.00
10920.00	90.00	267.74	6978.00	3018.24	-1589.81	-2780.07	40.4447107	-104.8045462	0.00
11020.00	90.00	267.74	6978.00	3117.28	-1593.75	-2879.99	40.4446999	-104.8049052	0.00
11120.00	90.00	267.74	6978.00	3216.31	-1597.69	-2979.91	40.4446890	-104.8052642	0.00
11220.00	90.00	267.74	6978.00	3315.34	-1601.63	-3079.84	40.4446782	-104.8056232	0.00
11320.00	90.00	267.74	6978.00	3414.38	-1605.57	-3179.76	40.4446673	-104.8059822	0.00
11420.00	90.00	267.74	6978.00	3513.41	-1609.51	-3279.68	40.4446565	-104.8063412	0.00
11520.00	90.00	267.74	6978.00	3612.44	-1613.46	-3379.60	40.4446456	-104.8067001	0.00
11620.00	90.00	267.74	6978.00	3711.48	-1617.40	-3479.53	40.4446348	-104.8070591	0.00
11720.00	90.00	267.74	6978.00	3810.51	-1621.34	-3579.45	40.4446239	-104.8074181	0.00
11820.00	90.00	267.74	6978.00	3909.54	-1625.28	-3679.37	40.4446131	-104.8077771	0.00
11920.00	90.00	267.74	6978.00	4008.58	-1629.22	-3779.29	40.4446022	-104.8081361	0.00
12020.00	90.00	267.74	6978.00	4107.61	-1633.16	-3879.22	40.4445913	-104.8084951	0.00
12120.00	90.00	267.74	6978.00	4206.65	-1637.10	-3979.14	40.4445805	-104.8088541	0.00
12220.00	90.00	267.74	6978.00	4305.68	-1641.04	-4079.06	40.4445696	-104.8092131	0.00
12320.00	90.00	267.74	6978.00	4404.71	-1644.98	-4178.98	40.4445588	-104.8095721	0.00
12420.00	90.00	267.74	6978.00	4503.75	-1648.92	-4278.91	40.4445479	-104.8099311	0.00
12520.00	90.00	267.74	6978.00	4602.78	-1652.86	-4378.83	40.4445370	-104.8102901	0.00
12620.00	90.00	267.74	6978.00	4701.81	-1656.80	-4478.75	40.4445262	-104.8106491	0.00
12720.00	90.00	267.74	6978.00	4800.85	-1660.74	-4578.67	40.4445153	-104.8110081	0.00
12820.00	90.00	267.74	6978.00	4899.88	-1664.68	-4678.59	40.4445044	-104.8113671	0.00
12920.00	90.00	267.74	6978.00	4998.91	-1668.62	-4778.52	40.4444936	-104.8117261	0.00
13020.00	90.00	267.74	6978.00	5097.95	-1672.57	-4878.44	40.4444827	-104.8120851	0.00
13120.00	90.00	267.74	6978.00	5196.98	-1676.51	-4978.36	40.4444718	-104.8124440	0.00
13220.00	90.00	267.74	6978.00	5296.01	-1680.45	-5078.28	40.4444609	-104.8128030	0.00
13320.00	90.00	267.74	6978.00	5395.05	-1684.39	-5178.21	40.4444501	-104.8131620	0.00

AG\_32N-31C-L\_REV-B.0\_PWP.las

13420.00	90.00	267.74	6978.00	5494.08	-1688.33	-5278.13	40.4444392	-104.8135210	0.00
13520.00	90.00	267.74	6978.00	5593.11	-1692.27	-5378.05	40.4444283	-104.8138800	0.00
13620.00	90.00	267.74	6978.00	5692.15	-1696.21	-5477.97	40.4444174	-104.8142390	0.00
13720.00	90.00	267.74	6978.00	5791.18	-1700.15	-5577.90	40.4444066	-104.8145980	0.00
13820.00	90.00	267.74	6978.00	5890.21	-1704.09	-5677.82	40.4443957	-104.8149570	0.00
13920.00	90.00	267.74	6978.00	5989.25	-1708.03	-5777.74	40.4443848	-104.8153160	0.00
14020.00	90.00	267.74	6978.00	6088.28	-1711.97	-5877.66	40.4443739	-104.8156750	0.00
14120.00	90.00	267.74	6978.00	6187.31	-1715.91	-5977.58	40.4443630	-104.8160340	0.00
14220.00	90.00	267.74	6978.00	6286.35	-1719.85	-6077.51	40.4443522	-104.8163930	0.00
14320.00	90.00	267.74	6978.00	6385.38	-1723.79	-6177.43	40.4443413	-104.8167520	0.00
14420.00	90.00	267.74	6978.00	6484.41	-1727.73	-6277.35	40.4443304	-104.8171109	0.00
14520.00	90.00	267.74	6978.00	6583.45	-1731.68	-6377.27	40.4443195	-104.8174699	0.00
14620.00	90.00	267.74	6978.00	6682.48	-1735.62	-6477.20	40.4443086	-104.8178289	0.00
14720.00	90.00	267.74	6978.00	6781.52	-1739.56	-6577.12	40.4442977	-104.8181879	0.00
14820.00	90.00	267.74	6978.00	6880.55	-1743.50	-6677.04	40.4442868	-104.8185469	0.00
14920.00	90.00	267.74	6978.00	6979.58	-1747.44	-6776.96	40.4442759	-104.8189059	0.00
15020.00	90.00	267.74	6978.00	7078.62	-1751.38	-6876.89	40.4442650	-104.8192649	0.00
15120.00	90.00	267.74	6978.00	7177.65	-1755.32	-6976.81	40.4442542	-104.8196239	0.00
15220.00	90.00	267.74	6978.00	7276.68	-1759.26	-7076.73	40.4442433	-104.8199829	0.00
15320.00	90.00	267.74	6978.00	7375.72	-1763.20	-7176.65	40.4442324	-104.8203419	0.00
15420.00	90.00	267.74	6978.00	7474.75	-1767.14	-7276.57	40.4442215	-104.8207009	0.00
15520.00	90.00	267.74	6978.00	7573.78	-1771.08	-7376.50	40.4442106	-104.8210598	0.00
15620.00	90.00	267.74	6978.00	7672.82	-1775.02	-7476.42	40.4441997	-104.8214188	0.00
15720.00	90.00	267.74	6978.00	7771.85	-1778.96	-7576.34	40.4441888	-104.8217778	0.00
15820.00	90.00	267.74	6978.00	7870.88	-1782.90	-7676.26	40.4441779	-104.8221368	0.00
15920.00	90.00	267.74	6978.00	7969.92	-1786.85	-7776.19	40.4441670	-104.8224958	0.00
16020.00	90.00	267.74	6978.00	8068.95	-1790.79	-7876.11	40.4441561	-104.8228548	0.00
16120.00	90.00	267.74	6978.00	8167.98	-1794.73	-7976.03	40.4441452	-104.8232138	0.00
16220.00	90.00	267.74	6978.00	8267.02	-1798.67	-8075.95	40.4441343	-104.8235728	0.00
16320.00	90.00	267.74	6978.00	8366.05	-1802.61	-8175.88	40.4441233	-104.8239318	0.00
16420.00	90.00	267.74	6978.00	8465.08	-1806.55	-8275.80	40.4441124	-104.8242907	0.00
16520.00	90.00	267.74	6978.00	8564.12	-1810.49	-8375.72	40.4441015	-104.8246497	0.00
16620.00	90.00	267.74	6978.00	8663.15	-1814.43	-8475.64	40.4440906	-104.8250087	0.00
16720.00	90.00	267.74	6978.00	8762.18	-1818.37	-8575.57	40.4440797	-104.8253677	0.00
16820.00	90.00	267.74	6978.00	8861.22	-1822.31	-8675.49	40.4440688	-104.8257267	0.00
16920.00	90.00	267.74	6978.00	8960.25	-1826.25	-8775.41	40.4440579	-104.8260857	0.00
17020.00	90.00	267.74	6978.00	9059.28	-1830.19	-8875.33	40.4440470	-104.8264447	0.00
17120.00	90.00	267.74	6978.00	9158.32	-1834.13	-8975.25	40.4440360	-104.8268037	0.00
17220.00	90.00	267.74	6978.00	9257.35	-1838.07	-9075.18	40.4440251	-104.8271627	0.00
17320.00	90.00	267.74	6978.00	9356.39	-1842.01	-9175.10	40.4440142	-104.8275216	0.00
17420.00	90.00	267.74	6978.00	9455.42	-1845.96	-9275.02	40.4440033	-104.8278806	0.00
17520.00	90.00	267.74	6978.00	9554.45	-1849.90	-9374.94	40.4439924	-104.8282396	0.00
17620.00	90.00	267.74	6978.00	9653.49	-1853.84	-9474.87	40.4439815	-104.8285986	0.00
17720.00	90.00	267.74	6978.00	9752.52	-1857.78	-9574.79	40.4439705	-104.8289576	0.00
17820.00	90.00	267.74	6978.00	9851.55	-1861.72	-9674.71	40.4439596	-104.8293166	0.00
17920.00	90.00	267.74	6978.00	9950.59	-1865.66	-9774.63	40.4439487	-104.8296756	0.00
18020.00	90.00	267.74	6978.00	10049.62	-1869.60	-9874.56	40.4439378	-104.8300346	0.00
18120.00	90.00	267.74	6978.00	10148.65	-1873.54	-9974.48	40.4439268	-104.8303935	0.00

AG\_32N-31C-L\_REV-B.0\_PWP.las

18220.00	90.00	267.74	6978.00	10247.69	-1877.48	-10074.40	40.4439159	-104.8307525	0.00
18320.00	90.00	267.74	6978.00	10346.72	-1881.42	-10174.32	40.4439050	-104.8311115	0.00
18420.00	90.00	267.74	6978.00	10445.75	-1885.36	-10274.24	40.4438940	-104.8314705	0.00
18520.00	90.00	267.74	6978.00	10544.79	-1889.30	-10374.17	40.4438831	-104.8318295	0.00
18620.00	90.00	267.74	6978.00	10643.82	-1893.24	-10474.09	40.4438722	-104.8321885	0.00
18639.92	90.00	267.74	6978.00	10663.55	-1894.03	-10494.00	40.4438700	-104.8322600	0.00





# Planned Wellpath Report

AG 32N-31C-L REV-B.0 PWP

Page 1 of 10



## REFERENCE WELLPATH IDENTIFICATION

Operator	SYNERGY RESOURCES CORPORATION	Slot	SLOT#12 AG 32N-31C-L (1037'FNL & 599'FEL SEC 32)
Area	COLORADO	Well	AG 32N-31C-L
Field	WELD COUNTY (NAD83,TRUE NORTH)	Wellbore	AG 32N-31C-L PWB
Facility	SEC.32-T06N-R66W		

## REPORT SETUP INFORMATION

Projection System	NAD83 / Lambert Colorado SP, Northern Zone (501), US feet	Software System	WellArchitect® 5.0
North Reference	True	User	Wagnjam
Scale	0.999963	Report Generated	9/27/2016 at 12:09:34 PM
Convergence at slot	0.46° East	Database/Source file	WA_DEN_Denver_Defn/AG_32N-31C-L_REV-B.0_PWP.xml

## WELLPATH LOCATION

	Local coordinates		Grid coordinates		Geographic coordinates	
	North[ft]	East[ft]	Easting[US ft]	Northing[US ft]	Latitude	Longitude
Slot Location	-161.01	-149.75	3196328.59	1407219.30	40°26'56.670"N	104°47'40.409"W
Facility Reference Pt			3196477.05	1407381.48	40°26'58.261"N	104°47'38.472"W
Field Reference Pt			3171284.48	1426358.81	40°30'07.643"N	104°53'02.634"W

## WELLPATH DATUM

Calculation method	Minimum curvature	PRECISION 462 (20') (RKB) to Facility Vertical Datum	4724.00ft
Horizontal Reference Pt	Slot	PRECISION 462 (20') (RKB) to Mean Sea Level	4724.00ft
Vertical Reference Pt	PRECISION 462 (20') (RKB)	PRECISION 462 (20') (RKB) to Mud Line at Slot (SLOT#12 AG 32N-31C-L (1037'FNL & 599'FEL SEC 32))	4724.00ft
MD Reference Pt	PRECISION 462 (20') (RKB)	Section Origin	N 0.00, E 0.00 ft
Field Vertical Reference	Mean Sea Level	Section Azimuth	259.77°

# Planned Wellpath Report

AG 32N-31C-L REV-B.0 PWP

Page 2 of 10

## REFERENCE WELLPATH IDENTIFICATION

Operator	SYNERGY RESOURCES CORPORATION	Slot	SLOT#12 AG 32N-31C-L (1037'FNL & 599'FEL SEC 32)
Area	COLORADO	Well	AG 32N-31C-L
Field	WELD COUNTY (NAD83,TRUE NORTH)	Wellbore	AG 32N-31C-L PWB
Facility	SEC.32-T06N-R66W		

## WELLPATH DATA (197 stations) † = interpolated/extrapolated station

MD [ft]	Inclination [°]	Azimuth [°]	TVD [ft]	Vert Sect [ft]	North [ft]	East [ft]	DLS [°/100ft]	Comments
0.00†	0.000	137.814	0.00	0.00	0.00	0.00	0.00	
20.00	0.000	137.814	20.00	0.00	0.00	0.00	0.00	Tie On
120.00†	0.000	137.814	120.00	0.00	0.00	0.00	0.00	
220.00†	0.000	137.814	220.00	0.00	0.00	0.00	0.00	
300.00	0.000	137.814	300.00	0.00	0.00	0.00	0.00	End of Tangent
320.00†	0.400	137.814	320.00	-0.04	-0.05	0.05	2.00	
420.00†	2.400	137.814	419.96	-1.33	-1.86	1.69	2.00	
520.00†	4.400	137.814	519.78	-4.47	-6.26	5.67	2.00	
620.00†	6.400	137.814	619.33	-9.45	-13.23	11.99	2.00	
720.00†	8.400	137.814	718.50	-16.27	-22.77	20.64	2.00	
820.00†	10.400	137.814	817.15	-24.91	-34.87	31.61	2.00	
920.00†	12.400	137.814	915.17	-35.37	-49.52	44.88	2.00	
1020.00†	14.400	137.814	1012.44	-47.63	-66.69	60.44	2.00	
1120.00†	16.400	137.814	1108.85	-61.69	-86.36	78.27	2.00	
1158.04	17.161	137.814	1145.26	-67.50	-94.50	85.65	2.00	End of Build
1220.00†	17.161	137.814	1204.47	-77.18	-108.05	97.92	0.00	
1320.00†	17.161	137.814	1300.02	-92.79	-129.91	117.74	0.00	
1420.00†	17.161	137.814	1395.57	-108.41	-151.77	137.55	0.00	
1520.00†	17.161	137.814	1491.11	-124.02	-173.64	157.37	0.00	
1620.00†	17.161	137.814	1586.66	-139.64	-195.50	177.18	0.00	
1720.00†	17.161	137.814	1682.21	-155.26	-217.36	196.99	0.00	
1820.00†	17.161	137.814	1777.76	-170.87	-239.22	216.81	0.00	
1920.00†	17.161	137.814	1873.31	-186.49	-261.09	236.62	0.00	
2020.00†	17.161	137.814	1968.85	-202.10	-282.95	256.44	0.00	
2120.00†	17.161	137.814	2064.40	-217.72	-304.81	276.25	0.00	
2220.00†	17.161	137.814	2159.95	-233.33	-326.67	296.06	0.00	
2320.00†	17.161	137.814	2255.50	-248.95	-348.53	315.88	0.00	
2420.00†	17.161	137.814	2351.05	-264.57	-370.40	335.69	0.00	
2520.00†	17.161	137.814	2446.60	-280.18	-392.26	355.51	0.00	
2620.00†	17.161	137.814	2542.14	-295.80	-414.12	375.32	0.00	



# Planned Wellpath Report

AG 32N-31C-L REV-B.0 PWP

Page 3 of 10



REFERENCE WELLPATH IDENTIFICATION			
Operator	SYNERGY RESOURCES CORPORATION	Slot	SLOT#12 AG 32N-31C-L (1037'FNL & 599'FEL SEC 32)
Area	COLORADO	Well	AG 32N-31C-L
Field	WELD COUNTY (NAD83,TRUE NORTH)	Wellbore	AG 32N-31C-L PWB
Facility	SEC.32-T06N-R66W		

WELLPATH DATA (197 stations) † = interpolated/extrapolated station								
MD [ft]	Inclination [°]	Azimuth [°]	TVD [ft]	Vert Sect [ft]	North [ft]	East [ft]	DLS [°/100ft]	Comments
2720.00†	17.161	137.814	2637.69	-311.41	-435.98	395.14	0.00	
2820.00†	17.161	137.814	2733.24	-327.03	-457.85	414.95	0.00	
2920.00†	17.161	137.814	2828.79	-342.65	-479.71	434.76	0.00	
3020.00†	17.161	137.814	2924.34	-358.26	-501.57	454.58	0.00	
3120.00†	17.161	137.814	3019.88	-373.88	-523.43	474.39	0.00	
3220.00†	17.161	137.814	3115.43	-389.49	-545.30	494.21	0.00	
3320.00†	17.161	137.814	3210.98	-405.11	-567.16	514.02	0.00	
3420.00†	17.161	137.814	3306.53	-420.72	-589.02	533.83	0.00	
3520.00†	17.161	137.814	3402.08	-436.34	-610.88	553.65	0.00	
3620.00†	17.161	137.814	3497.62	-451.96	-632.75	573.46	0.00	
3720.00†	17.161	137.814	3593.17	-467.57	-654.61	593.28	0.00	
3820.00†	17.161	137.814	3688.72	-483.19	-676.47	613.09	0.00	
3920.00†	17.161	137.814	3784.27	-498.80	-698.33	632.90	0.00	
4020.00†	17.161	137.814	3879.82	-514.42	-720.20	652.72	0.00	
4120.00†	17.161	137.814	3975.37	-530.04	-742.06	672.53	0.00	
4220.00†	17.161	137.814	4070.91	-545.65	-763.92	692.35	0.00	
4320.00†	17.161	137.814	4166.46	-561.27	-785.78	712.16	0.00	
4420.00†	17.161	137.814	4262.01	-576.88	-807.65	731.97	0.00	
4520.00†	17.161	137.814	4357.56	-592.50	-829.51	751.79	0.00	
4620.00†	17.161	137.814	4453.11	-608.12	-851.37	771.60	0.00	
4720.00†	17.161	137.814	4548.65	-623.73	-873.23	791.42	0.00	
4820.00†	17.161	137.814	4644.20	-639.35	-895.10	811.23	0.00	
4920.00†	17.161	137.814	4739.75	-654.96	-916.96	831.04	0.00	
5020.00†	17.161	137.814	4835.30	-670.58	-938.82	850.86	0.00	
5120.00†	17.161	137.814	4930.85	-686.19	-960.68	870.67	0.00	
5220.00†	17.161	137.814	5026.39	-701.81	-982.54	890.49	0.00	
5320.00†	17.161	137.814	5121.94	-717.43	-1004.41	910.30	0.00	
5420.00†	17.161	137.814	5217.49	-733.04	-1026.27	930.11	0.00	
5520.00†	17.161	137.814	5313.04	-748.66	-1048.13	949.93	0.00	
5620.00†	17.161	137.814	5408.59	-764.27	-1069.99	969.74	0.00	



# Planned Wellpath Report

AG 32N-31C-L REV-B.0 PWP

Page 4 of 10



REFERENCE WELLPATH IDENTIFICATION			
Operator	SYNERGY RESOURCES CORPORATION	Slot	SLOT#12 AG 32N-31C-L (1037'FNL & 599'FEL SEC 32)
Area	COLORADO	Well	AG 32N-31C-L
Field	WELD COUNTY (NAD83,TRUE NORTH)	Wellbore	AG 32N-31C-L PWB
Facility	SEC.32-T06N-R66W		

WELLPATH DATA (197 stations) † = interpolated/extrapolated station								
MD [ft]	Inclination [°]	Azimuth [°]	TVD [ft]	Vert Sect [ft]	North [ft]	East [ft]	DLS [°/100ft]	Comments
5720.00†	17.161	137.814	5504.13	-779.89	-1091.86	989.56	0.00	
5820.00†	17.161	137.814	5599.68	-795.51	-1113.72	1009.37	0.00	
5920.00†	17.161	137.814	5695.23	-811.12	-1135.58	1029.18	0.00	
6020.00†	17.161	137.814	5790.78	-826.74	-1157.44	1049.00	0.00	
6120.00†	17.161	137.814	5886.33	-842.35	-1179.31	1068.81	0.00	
6220.00†	17.161	137.814	5981.88	-857.97	-1201.17	1088.63	0.00	
6320.00†	17.161	137.814	6077.42	-873.58	-1223.03	1108.44	0.00	
6420.00†	17.161	137.814	6172.97	-889.20	-1244.89	1128.25	0.00	
6491.41	17.161	137.814	6241.20	-900.35	-1260.51	1142.40	0.00	End of Tangent
6520.00†	15.679	145.269	6268.63	-904.19	-1266.81	1147.44	9.00	
6620.00†	13.338	180.592	6365.62	-907.63	-1289.49	1155.03	9.00	
6720.00†	16.403	214.186	6462.43	-895.56	-1312.76	1146.96	9.00	
6820.00†	22.787	233.430	6556.69	-868.27	-1336.02	1123.43	9.00	
6920.00†	30.469	244.006	6646.07	-826.42	-1358.72	1085.01	9.00	
7013.16†	38.110	250.170	6723.00	-775.26	-1378.86	1036.65	9.00	SHARON SPRINGS
7020.00†	38.681	250.537	6728.36	-771.07	-1380.29	1032.65	9.00	
7060.22†	42.064	252.529	6759.00	-745.29	-1388.52	1007.94	9.00	NIO-A
7120.00†	47.145	255.050	6801.55	-703.55	-1400.20	967.64	9.00	
7220.00†	55.743	258.461	6863.83	-625.55	-1417.95	891.58	9.00	
7251.62†	58.480	259.391	6881.00	-599.00	-1423.05	865.52	9.00	NIO-B
7320.00†	64.418	261.232	6913.67	-538.97	-1433.13	806.34	9.00	
7420.00†	73.138	263.626	6949.84	-445.95	-1445.34	714.02	9.00	
7431.22†	74.118	263.878	6953.00	-435.21	-1446.51	703.32	9.00	NIO-C
7520.00†	81.883	265.806	6971.44	-348.79	-1454.29	616.90	9.00	
7612.70	90.000	267.742	6978.00 <sup>†</sup>	-257.09	-1459.48	524.66	9.00	End of 3D Arc
7620.00†	90.000	267.742	6978.00	-249.86	-1459.77	517.37	0.00	
7720.00†	90.000	267.742	6978.00	-150.83	-1463.71	417.44	0.00	
7820.00†	90.000	267.742	6978.00	-51.79	-1467.65	317.52	0.00	
7920.00†	90.000	267.742	6978.00	47.24	-1471.59	217.60	0.00	
8020.00†	90.000	267.742	6978.00	146.27	-1475.53	117.68	0.00	



# Planned Wellpath Report

AG 32N-31C-L REV-B.0 PWP

Page 5 of 10



REFERENCE WELLPATH IDENTIFICATION			
Operator	SYNERGY RESOURCES CORPORATION	Slot	SLOT#12 AG 32N-31C-L (1037'FNL & 599'FEL SEC 32)
Area	COLORADO	Well	AG 32N-31C-L
Field	WELD COUNTY (NAD83,TRUE NORTH)	Wellbore	AG 32N-31C-L PWB
Facility	SEC.32-T06N-R66W		

WELLPATH DATA (197 stations) † = interpolated/extrapolated station								
MD [ft]	Inclination [°]	Azimuth [°]	TVD [ft]	Vert Sect [ft]	North [ft]	East [ft]	DLS [°/100ft]	Comments
8120.00†	90.000	267.742	6978.00	245.31	-1479.47	17.75	0.00	
8220.00†	90.000	267.742	6978.00	344.34	-1483.41	-82.17	0.00	
8320.00†	90.000	267.742	6978.00	443.37	-1487.35	-182.09	0.00	
8420.00†	90.000	267.742	6978.00	542.41	-1491.29	-282.01	0.00	
8520.00†	90.000	267.742	6978.00	641.44	-1495.23	-381.93	0.00	
8620.00†	90.000	267.742	6978.00	740.47	-1499.18	-481.86	0.00	
8720.00†	90.000	267.742	6978.00	839.51	-1503.12	-581.78	0.00	
8820.00†	90.000	267.742	6978.00	938.54	-1507.06	-681.70	0.00	
8920.00†	90.000	267.742	6978.00	1037.57	-1511.00	-781.62	0.00	
9020.00†	90.000	267.742	6978.00	1136.61	-1514.94	-881.55	0.00	
9120.00†	90.000	267.742	6978.00	1235.64	-1518.88	-981.47	0.00	
9220.00†	90.000	267.742	6978.00	1334.67	-1522.82	-1081.39	0.00	
9320.00†	90.000	267.742	6978.00	1433.71	-1526.76	-1181.31	0.00	
9420.00†	90.000	267.742	6978.00	1532.74	-1530.70	-1281.24	0.00	
9520.00†	90.000	267.742	6978.00	1631.78	-1534.64	-1381.16	0.00	
9620.00†	90.000	267.742	6978.00	1730.81	-1538.58	-1481.08	0.00	
9720.00†	90.000	267.742	6978.00	1829.84	-1542.52	-1581.00	0.00	
9820.00†	90.000	267.742	6978.00	1928.88	-1546.46	-1680.92	0.00	
9920.00†	90.000	267.742	6978.00	2027.91	-1550.40	-1780.85	0.00	
10020.00†	90.000	267.742	6978.00	2126.94	-1554.35	-1880.77	0.00	
10120.00†	90.000	267.742	6978.00	2225.98	-1558.29	-1980.69	0.00	
10220.00†	90.000	267.742	6978.00	2325.01	-1562.23	-2080.61	0.00	
10320.00†	90.000	267.742	6978.00	2424.04	-1566.17	-2180.54	0.00	
10420.00†	90.000	267.742	6978.00	2523.08	-1570.11	-2280.46	0.00	
10520.00†	90.000	267.742	6978.00	2622.11	-1574.05	-2380.38	0.00	
10620.00†	90.000	267.742	6978.00	2721.14	-1577.99	-2480.30	0.00	
10720.00†	90.000	267.742	6978.00	2820.18	-1581.93	-2580.23	0.00	
10820.00†	90.000	267.742	6978.00	2919.21	-1585.87	-2680.15	0.00	
10920.00†	90.000	267.742	6978.00	3018.24	-1589.81	-2780.07	0.00	
11020.00†	90.000	267.742	6978.00	3117.28	-1593.75	-2879.99	0.00	

# Planned Wellpath Report

AG 32N-31C-L REV-B.0 PWP

Page 6 of 10

## REFERENCE WELLPATH IDENTIFICATION

Operator	SYNERGY RESOURCES CORPORATION	Slot	SLOT#12 AG 32N-31C-L (1037'FNL & 599'FEL SEC 32)
Area	COLORADO	Well	AG 32N-31C-L
Field	WELD COUNTY (NAD83,TRUE NORTH)	Wellbore	AG 32N-31C-L PWB
Facility	SEC.32-T06N-R66W		

## WELLPATH DATA (197 stations) † = interpolated/extrapolated station

MD [ft]	Inclination [°]	Azimuth [°]	TVD [ft]	Vert Sect [ft]	North [ft]	East [ft]	DLS [°/100ft]	Comments
11120.00†	90.000	267.742	6978.00	3216.31	-1597.69	-2979.91	0.00	
11220.00†	90.000	267.742	6978.00	3315.34	-1601.63	-3079.84	0.00	
11320.00†	90.000	267.742	6978.00	3414.38	-1605.57	-3179.76	0.00	
11420.00†	90.000	267.742	6978.00	3513.41	-1609.51	-3279.68	0.00	
11520.00†	90.000	267.742	6978.00	3612.44	-1613.46	-3379.60	0.00	
11620.00†	90.000	267.742	6978.00	3711.48	-1617.40	-3479.53	0.00	
11720.00†	90.000	267.742	6978.00	3810.51	-1621.34	-3579.45	0.00	
11820.00†	90.000	267.742	6978.00	3909.54	-1625.28	-3679.37	0.00	
11920.00†	90.000	267.742	6978.00	4008.58	-1629.22	-3779.29	0.00	
12020.00†	90.000	267.742	6978.00	4107.61	-1633.16	-3879.22	0.00	
12120.00†	90.000	267.742	6978.00	4206.65	-1637.10	-3979.14	0.00	
12220.00†	90.000	267.742	6978.00	4305.68	-1641.04	-4079.06	0.00	
12320.00†	90.000	267.742	6978.00	4404.71	-1644.98	-4178.98	0.00	
12420.00†	90.000	267.742	6978.00	4503.75	-1648.92	-4278.91	0.00	
12520.00†	90.000	267.742	6978.00	4602.78	-1652.86	-4378.83	0.00	
12620.00†	90.000	267.742	6978.00	4701.81	-1656.80	-4478.75	0.00	
12720.00†	90.000	267.742	6978.00	4800.85	-1660.74	-4578.67	0.00	
12820.00†	90.000	267.742	6978.00	4899.88	-1664.68	-4678.59	0.00	
12920.00†	90.000	267.742	6978.00	4998.91	-1668.62	-4778.52	0.00	
13020.00†	90.000	267.742	6978.00	5097.95	-1672.57	-4878.44	0.00	
13120.00†	90.000	267.742	6978.00	5196.98	-1676.51	-4978.36	0.00	
13220.00†	90.000	267.742	6978.00	5296.01	-1680.45	-5078.28	0.00	
13320.00†	90.000	267.742	6978.00	5395.05	-1684.39	-5178.21	0.00	
13420.00†	90.000	267.742	6978.00	5494.08	-1688.33	-5278.13	0.00	
13520.00†	90.000	267.742	6978.00	5593.11	-1692.27	-5378.05	0.00	
13620.00†	90.000	267.742	6978.00	5692.15	-1696.21	-5477.97	0.00	
13720.00†	90.000	267.742	6978.00	5791.18	-1700.15	-5577.90	0.00	
13820.00†	90.000	267.742	6978.00	5890.21	-1704.09	-5677.82	0.00	
13920.00†	90.000	267.742	6978.00	5989.25	-1708.03	-5777.74	0.00	
14020.00†	90.000	267.742	6978.00	6088.28	-1711.97	-5877.66	0.00	





# Planned Wellpath Report

AG 32N-31C-L REV-B.0 PWP

Page 7 of 10



## REFERENCE WELLPATH IDENTIFICATION

Operator	SYNERGY RESOURCES CORPORATION	Slot	SLOT#12 AG 32N-31C-L (1037'FNL & 599'FEL SEC 32)
Area	COLORADO	Well	AG 32N-31C-L
Field	WELD COUNTY (NAD83,TRUE NORTH)	Wellbore	AG 32N-31C-L PWB
Facility	SEC.32-T06N-R66W		

## WELLPATH DATA (197 stations) † = interpolated/extrapolated station

MD [ft]	Inclination [°]	Azimuth [°]	TVD [ft]	Vert Sect [ft]	North [ft]	East [ft]	DLS [°/100ft]	Comments
14120.00†	90.000	267.742	6978.00	6187.31	-1715.91	-5977.58	0.00	
14220.00†	90.000	267.742	6978.00	6286.35	-1719.85	-6077.51	0.00	
14320.00†	90.000	267.742	6978.00	6385.38	-1723.79	-6177.43	0.00	
14420.00†	90.000	267.742	6978.00	6484.41	-1727.73	-6277.35	0.00	
14520.00†	90.000	267.742	6978.00	6583.45	-1731.68	-6377.27	0.00	
14620.00†	90.000	267.742	6978.00	6682.48	-1735.62	-6477.20	0.00	
14720.00†	90.000	267.742	6978.00	6781.52	-1739.56	-6577.12	0.00	
14820.00†	90.000	267.742	6978.00	6880.55	-1743.50	-6677.04	0.00	
14920.00†	90.000	267.742	6978.00	6979.58	-1747.44	-6776.96	0.00	
15020.00†	90.000	267.742	6978.00	7078.62	-1751.38	-6876.89	0.00	
15120.00†	90.000	267.742	6978.00	7177.65	-1755.32	-6976.81	0.00	
15220.00†	90.000	267.742	6978.00	7276.68	-1759.26	-7076.73	0.00	
15320.00†	90.000	267.742	6978.00	7375.72	-1763.20	-7176.65	0.00	
15420.00†	90.000	267.742	6978.00	7474.75	-1767.14	-7276.57	0.00	
15520.00†	90.000	267.742	6978.00	7573.78	-1771.08	-7376.50	0.00	
15620.00†	90.000	267.742	6978.00	7672.82	-1775.02	-7476.42	0.00	
15720.00†	90.000	267.742	6978.00	7771.85	-1778.96	-7576.34	0.00	
15820.00†	90.000	267.742	6978.00	7870.88	-1782.90	-7676.26	0.00	
15920.00†	90.000	267.742	6978.00	7969.92	-1786.85	-7776.19	0.00	
16020.00†	90.000	267.742	6978.00	8068.95	-1790.79	-7876.11	0.00	
16120.00†	90.000	267.742	6978.00	8167.98	-1794.73	-7976.03	0.00	
16220.00†	90.000	267.742	6978.00	8267.02	-1798.67	-8075.95	0.00	
16320.00†	90.000	267.742	6978.00	8366.05	-1802.61	-8175.88	0.00	
16420.00†	90.000	267.742	6978.00	8465.08	-1806.55	-8275.80	0.00	
16520.00†	90.000	267.742	6978.00	8564.12	-1810.49	-8375.72	0.00	
16620.00†	90.000	267.742	6978.00	8663.15	-1814.43	-8475.64	0.00	
16720.00†	90.000	267.742	6978.00	8762.18	-1818.37	-8575.57	0.00	
16820.00†	90.000	267.742	6978.00	8861.22	-1822.31	-8675.49	0.00	
16920.00†	90.000	267.742	6978.00	8960.25	-1826.25	-8775.41	0.00	
17020.00†	90.000	267.742	6978.00	9059.28	-1830.19	-8875.33	0.00	



# Planned Wellpath Report

AG 32N-31C-L REV-B.0 PWP

Page 8 of 10



## REFERENCE WELLPATH IDENTIFICATION

Operator	SYNERGY RESOURCES CORPORATION	Slot	SLOT#12 AG 32N-31C-L (1037'FNL & 599'FEL SEC 32)
Area	COLORADO	Well	AG 32N-31C-L
Field	WELD COUNTY (NAD83,TRUE NORTH)	Wellbore	AG 32N-31C-L PWB
Facility	SEC.32-T06N-R66W		

## WELLPATH DATA (197 stations) † = interpolated/extrapolated station

MD [ft]	Inclination [°]	Azimuth [°]	TVD [ft]	Vert Sect [ft]	North [ft]	East [ft]	DLS [°/100ft]	Comments
17120.00†	90.000	267.742	6978.00	9158.32	-1834.13	-8975.25	0.00	
17220.00†	90.000	267.742	6978.00	9257.35	-1838.07	-9075.18	0.00	
17320.00†	90.000	267.742	6978.00	9356.39	-1842.01	-9175.10	0.00	
17420.00†	90.000	267.742	6978.00	9455.42	-1845.96	-9275.02	0.00	
17520.00†	90.000	267.742	6978.00	9554.45	-1849.90	-9374.94	0.00	
17620.00†	90.000	267.742	6978.00	9653.49	-1853.84	-9474.87	0.00	
17720.00†	90.000	267.742	6978.00	9752.52	-1857.78	-9574.79	0.00	
17820.00†	90.000	267.742	6978.00	9851.55	-1861.72	-9674.71	0.00	
17920.00†	90.000	267.742	6978.00	9950.59	-1865.66	-9774.63	0.00	
18020.00†	90.000	267.742	6978.00	10049.62	-1869.60	-9874.56	0.00	
18120.00†	90.000	267.742	6978.00	10148.65	-1873.54	-9974.48	0.00	
18220.00†	90.000	267.742	6978.00	10247.69	-1877.48	-10074.40	0.00	
18320.00†	90.000	267.742	6978.00	10346.72	-1881.42	-10174.32	0.00	
18420.00†	90.000	267.742	6978.00	10445.75	-1885.36	-10274.24	0.00	
18520.00†	90.000	267.742	6978.00	10544.79	-1889.30	-10374.17	0.00	
18620.00†	90.000	267.742	6978.00	10643.82	-1893.24	-10474.09	0.00	
18639.92	90.000	267.742	6978.00 <sup>2</sup>	10663.55	-1894.03	-10494.00	0.00	End of Tangent

## HOLE & CASING SECTIONS - Ref Wellbore: AG 32N-31C-L PWB Ref Wellpath: AG 32N-31C-L REV-B.0 PWP

String/Diameter	Start MD [ft]	End MD [ft]	Interval [ft]	Start TVD [ft]	End TVD [ft]	Start N/S [ft]	Start E/W [ft]	End N/S [ft]	End E/W [ft]
13.5in Open Hole	20.00	1800.00	1780.00	20.00	1758.65	0.00	0.00	-234.85	212.85
8.5in Open Hole	1800.00	18639.92	16839.92	1758.65	6978.00	-234.85	212.85	-1894.03	-10494.00





# Planned Wellpath Report

AG 32N-31C-L REV-B.0 PWP

Page 9 of 10



## REFERENCE WELLPATH IDENTIFICATION

Operator	SYNERGY RESOURCES CORPORATION	Slot	SLOT#12 AG 32N-31C-L (1037'FNL & 599'FEL SEC 32)
Area	COLORADO	Well	AG 32N-31C-L
Field	WELD COUNTY (NAD83,TRUE NORTH)	Wellbore	AG 32N-31C-L PWB
Facility	SEC.32-T06N-R66W		

## TARGETS

Name	MD [ft]	TVD [ft]	North [ft]	East [ft]	Grid East [US ft]	Grid North [US ft]	Latitude	Longitude	Shape
SEC.31-T06N-R66W		-20.00	161.01	149.75	3196477.05	1407381.48	40°26'58.261"N	104°47'38.472"W	polygon
SEC.32-T06N-R66W		-20.00	161.01	149.75	3196477.05	1407381.48	40°26'58.261"N	104°47'38.472"W	polygon
2) AG 32N-31C-L BHL REV-1 ON PLAT (NIO-C, 2489'FNL & 75'FWL SEC 31)	18639.92	6978.00	-1894.03	-10494.00	3185850.40	1405241.92	40°26'37.932"N	104°49'56.136"W	circle
1) AG 32N-31C-L TOP OF PROD (2509'FNL & 75'FEL SEC 32)	7612.70	6978.00	-1459.48	524.66	3196864.83	1405764.09	40°26'42.248"N	104°47'33.623"W	circle

## SURVEY PROGRAM - Ref Wellbore: AG 32N-31C-L PWB Ref Wellpath: AG 32N-31C-L REV-B.0 PWP

Start MD [ft]	End MD [ft]	Positional Uncertainty Model	Log Name/Comment	Wellbore
20.00	1800.00	Custom BHI NaviTrak (Standard Rotating+Axial Corr) (Rockies 0.03Gt model)		AG 32N-31C-L PWB
1800.00	18640.00	Custom BHI AutoTrak Curve (Short) (Rockies 0.03Gt model)		AG 32N-31C-L PWB



# Planned Wellpath Report

AG 32N-31C-L REV-B.0 PWP

Page 10 of 10



## REFERENCE WELLPATH IDENTIFICATION

Operator	SYNERGY RESOURCES CORPORATION	Slot	SLOT#12 AG 32N-31C-L (1037'FNL & 599'FEL SEC 32)
Area	COLORADO	Well	AG 32N-31C-L
Field	WELD COUNTY (NAD83,TRUE NORTH)	Wellbore	AG 32N-31C-L PWB
Facility	SEC.32-T06N-R66W		

## WELLPATH COMMENTS

MD [ft]	Inclination [°]	Azimuth [°]	TVD [ft]	Comment
7013.16	38.110	250.170	6723.00	SHARON SPRINGS
7060.22	42.064	252.529	6759.00	NIO-A
7251.62	58.480	259.391	6881.00	NIO-B
7431.22	74.118	263.878	6953.00	NIO-C