

SYNERGY RESOURCES CORPORATION

Location: COLORADO Slot: SLOT#11 AG 32C-31-L (1022'FNL & 585'FEL SEC 32)  
Field: WELD COUNTY (NAD83,TRUE NORTH) Well: AG 32C-31-L  
Facility: SEC.32-T06N-R66W Wellbore: AG 32C-31-L PWB

Plot reference wellpath is AG 32C-31-L REV-B.0 PWP	Grid System: NAD83 / Lambert Colorado SP, Northern Zone (501), US feet
True vertical depths are referenced to PRECISION 462 (20) (RKB)	* = Wellpath was transformed from a different geodetic datum
Measured depths are referenced to PRECISION 462 (20) (RKB)	North Reference: True north
PRECISION 462 (20) (RKB) to Mean Sea Level: 4724 feet	Scale: True distance
Mean Sea Level to Mud line (At Slot: SLOT#11 AG 32C-31-L (1022'FNL & 585'FEL SEC 32)); 0 feet	Depths are in feet
Coordinates are in feet referenced to Slot	Created by: wagnjam on 2016-09-26
	Database: WA_DEN_Denver_Defn

Location Information

Facility Name				Grid East (US ft)	Grid North (US ft)	Latitude	Longitude
SEC.32-T06N-R66W				3196477.049	1407381.484	40°26'58.261"N	104°47'38.472"W
Slot	Local N (ft)	Local E (ft)		Grid East (US ft)	Grid North (US ft)	Latitude	Longitude
SLOT#11 AG 32C-31-L (1022'FNL & 585'FEL SEC 32)	-146.43	-136.07		3196342.157	1407233.977	40°26'56.814"N	104°47'40.232"W
PRECISION 462 (20) (RKB) to Mud line (At Slot: SLOT#11 AG 32C-31-L (1022'FNL & 585'FEL SEC 32))						4724ft	
Mean Sea Level to Mud line (At Slot: SLOT#11 AG 32C-31-L (1022'FNL & 585'FEL SEC 32))						0ft	
PRECISION 462 (20) (RKB) to Mean Sea Level						4724ft	

Wellpath Comments

MD (ft)	X (ft)	Y (ft)	TVD (ft)	Inclination (°)	Azimuth (°)	VS (ft)	Comment
6945.17	1081.52	-1160.89	6723.00	27.821	245.949	-883.64	SHARON SPRINGS
6986.55	1062.68	-1168.70	6759.00	31.249	248.905	-863.80	NIO-A
7141.33	972.14	-1196.19	6881.00	44.457	256.222	-770.05	NIO-B
7251.77	890.40	-1213.53	6953.00	54.069	259.576	-686.59	NIO-C
7455.18	711.70	-1238.63	7045.00	71.938	264.075	-506.18	FORT HAYS
7545.76	624.26	-1246.40	7067.00	79.928	265.743	-418.60	CODELL

Well Profile Data

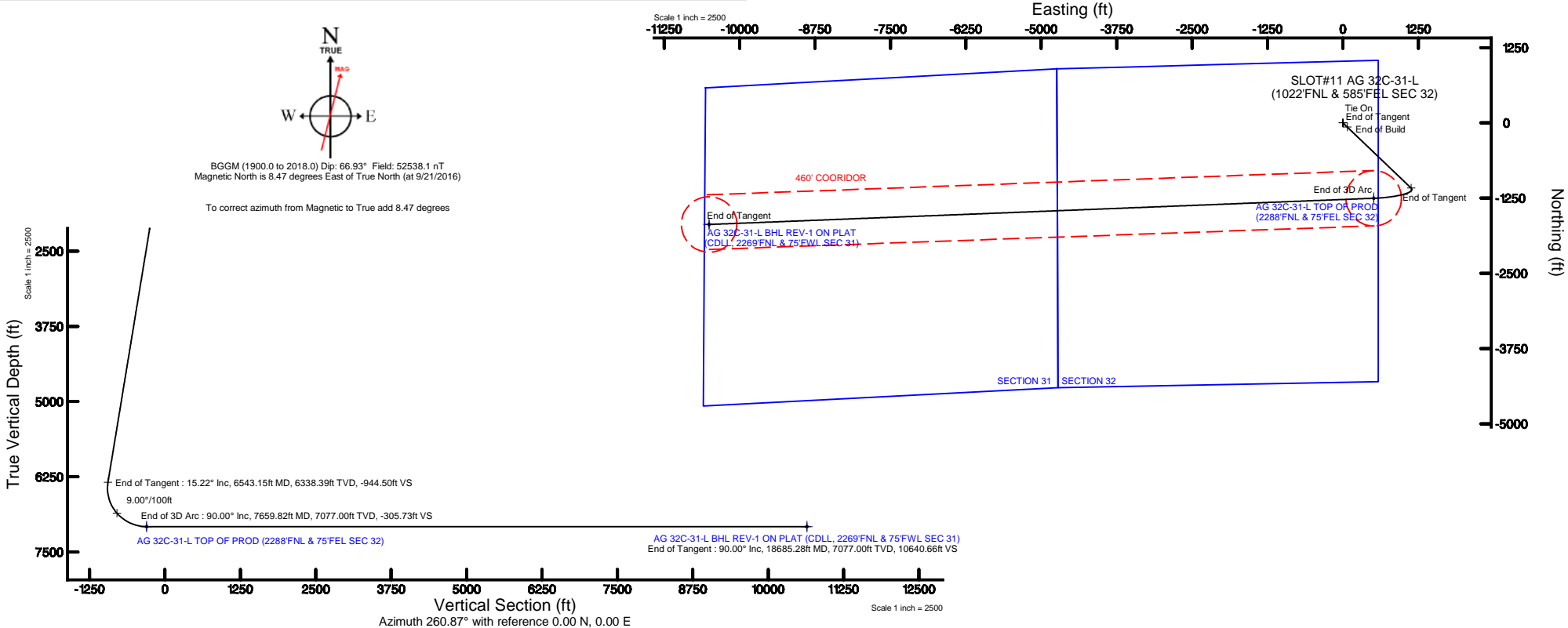
Design Comment	MD (ft)	Inc (°)	Az (°)	TVD (ft)	Local N (ft)	Local E (ft)	DLS (°/100ft)	VS (ft)
Tie On	20.00	0.000	133.780	20.00	0.00	0.00	0.00	0.00
End of Tangent	200.00	0.000	133.780	200.00	0.00	0.00	0.00	0.00
End of Build	961.08	15.222	133.780	952.16	-69.54	72.56	2.00	-60.61
End of Tangent	6543.15	15.222	133.780	6338.39	-1083.56	1130.73	0.00	-944.50
End of 3D Arc	7659.82	90.000	267.737	7077.00	-1252.83	510.97	9.00	-305.73
End of Tangent	18685.28	90.000	267.737	7077.00	-1688.19	-10505.89	0.00	10640.66

Targets

Name	MD (ft)	TVD (ft)	Local N (ft)	Local E (ft)	Grid East (US ft)	Grid North (US ft)	Latitude	Longitude
SEC.31-T06N-R66W		-20.00	146.43	136.07	3196477.05	1407381.48	40°26'58.261"N	104°47'38.472"W
SEC.32-T06N-R66W		-20.00	146.43	136.07	3196477.05	1407381.48	40°26'58.261"N	104°47'38.472"W
AG 32C-31-L BHL REV-1 ON PLAT (CDLL, 2269'FNL & 75'FWL SEC 31)	18685.28	7077.00	-1688.19	-10505.89	3185850.44	1405462.33	40°26'40.110"N	104°49'56.114"W
AG 32C-31-L TOP OF PROD (2288'FNL & 75'FEL SEC 32)	7659.82	7077.00	-1252.83	510.97	3196963.06	1405985.30	40°26'44.434"N	104°47'33.623"W

Tie-On Position

MD (ft)	Inc (°)	Az (°)	TVD (ft)	Local N (ft)	Local E (ft)	Grid East (US ft)	Grid North (US ft)	Latitude	Longitude
20.00	0.000	133.780	20.00	0.00	0.00	3196342.16	1407233.98	40°26'56.814"N	104°47'40.232"W





# SYNERGY RESOURCES CORPORATION

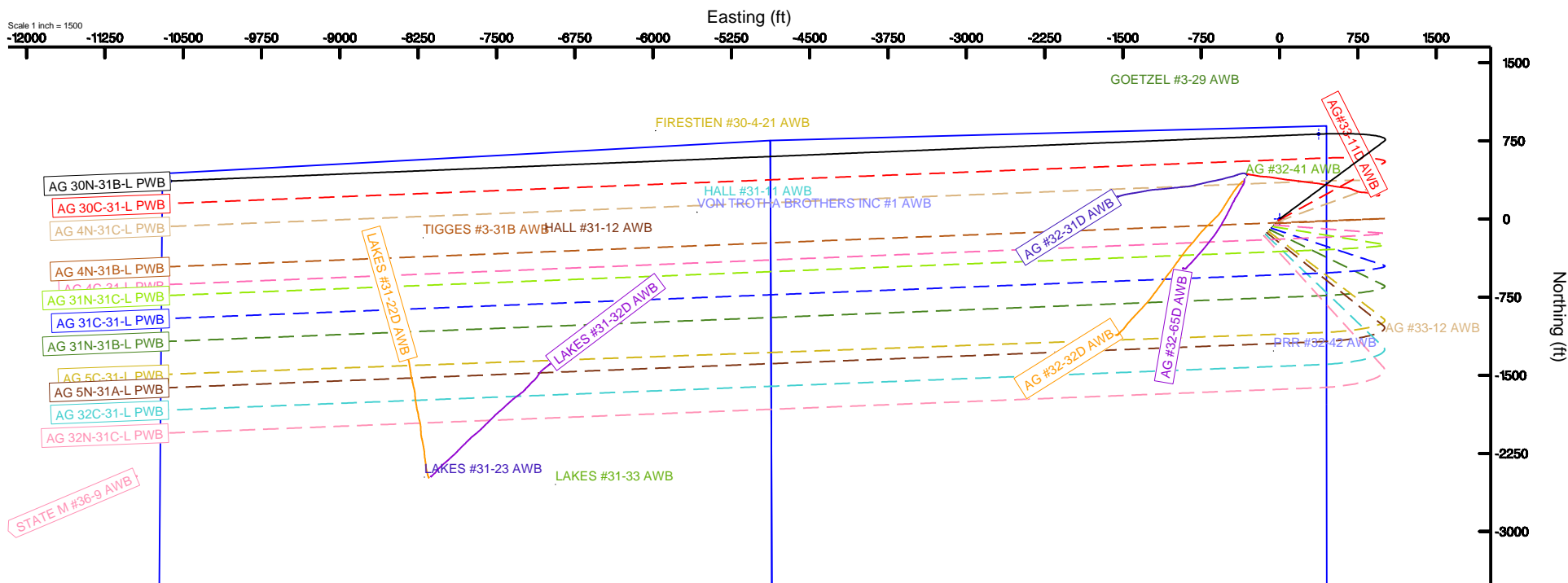
Location: COLORADO Slot: SLOT#01 AG 30N-31B-L (879FNL & 449FEL SEC 32)  
Field: WELD COUNTY (NAD83,TRUE NORTH) Well: AG 30N-31B-L  
Facility: SEC.32-T06N-R66W Wellbore: AG 30N-31B-L PWB



BGGM (1900.0 to 2018.0) Dip: 66.93° Field: 52538.1 nT  
Magnetic North is 8.47 degrees East of True North (at 9/21/2016)

To correct azimuth from Magnetic to True add 8.47 degrees

Scale 1 inch = 1500



## ~VERSION INFORMATION

VERS. 2.0 : CWLS LOG ASCII STANDARD-VERSION 2.0

WRAP. NO : ASCII DATA SECTION CONTAINS ONE ROW PER WELLPATH STATION

## ~WELL INFORMATION

#MNEM	.UNITS	DATA	:DESCRIPTION
#----	.-----	----	:-----
STRT	.ft	0.00	:START MD
STOP	.ft	18665.28	:STOP MD
STEP	.ft	0.0	:STEP (non-uniform increment)
NULL	.	-999.99	:NULL
COMP	.	SYNERGY RESOURCES CORPORATION	:OPERATOR
WELL	.	AG 32C-31-L	:WELL
FLD	.	WELD COUNTY (NAD83,TRUE NORTH)	:FIELD
LOC	.	COLORADO	:AREA (aka: Location)
CNTY	.	N/A	:COUNTY
STAT	.	N/A	:STATE
CTRY	.	N/A	:COUNTRY
SRVC	.	Baker Hughes	:CONTRACTOR
DATE	.	09/21/2016	:LOG REV DATE
API	.		:API NUMBER

## ~OTHER INFORMATION

#Software: WellArchitect(R) Version 5.0

#MNEM	.UNITS	DATA	:DESCRIPTION
#----	.-----	----	:-----
WPTYPE	.	PLANNED WELLPATH	:WELLPATH TYPE
FACILITY	.	SEC.32-T06N-R66W	:FACILITY
SLOT	.	SLOT#11 AG 32C-31-L (1022'FNL & 585'FEL SEC 32)	:SLOT
WELLBORE	.	AG 32C-31-L PWB	:WELLBORE
WELLPATH	.	AG 32C-31-L REV-B.0 PWP	:WELLPATH
MDREFPT	.	Slot	:MD REFERENCE POINT
TVDREFPT	.	Mean Sea Level	:TVD REFERENCE POINT
LCLREFPT	.	Field Center	:LOCAL COORDINATE REFERENCE PT
VSAZIMUTH	.deg	260.87	:VERTICAL SECTION AZIMUTH
VSORIGN	.ft	-19299.11	:VERTICAL SECTION ORIGIN NORTH
VSORIGE	.ft	24925.12	:VERTICAL SECTION ORIGIN EAST

## ~CURVE (WELLPATH) INFORMATION

#MNEM	.UNITS	:DESCRIPTION
#----	.-----	:-----
DEPT	.ft	:MEASURED DEPTH
INC	.deg	:INCLINATION
AZI	.deg	:AZIMUTH
TVD	.ft	:TRUE VERTICAL DEPTH
SECT	.ft	:CROSS SECTION (CURTAIN/VERTICAL)
LOCALN	.ft	:LOCAL NORTH
LOCALE	.ft	:LOCAL EAST

AG\_32C-31-L\_REV-B.0\_PWP.1as

LAT .deg :LATITUDE  
 LONG .deg :LONGITUDE  
 DLS .deg/100ft :DOGLEG SEVERITY

~ASCII DATA

0.00	0.00	133.78	-4704.00	0.00	-19299.11	24925.12	40.4491150	-104.7945089	0.00
20.00	0.00	133.78	-4684.00	0.00	-19299.11	24925.12	40.4491150	-104.7945089	0.00
120.00	0.00	133.78	-4584.00	0.00	-19299.11	24925.12	40.4491150	-104.7945089	0.00
180.00	0.00	133.78	-4524.00	0.00	-19299.11	24925.12	40.4491150	-104.7945089	0.00
220.00	0.80	133.78	-4484.00	-0.17	-19299.30	24925.32	40.4491145	-104.7945082	2.00
320.00	2.80	133.78	-4384.06	-2.06	-19301.47	24927.59	40.4491085	-104.7945000	2.00
420.00	4.80	133.78	-4284.28	-6.06	-19306.05	24932.38	40.4490959	-104.7944828	2.00
520.00	6.80	133.78	-4184.80	-12.15	-19313.04	24939.68	40.4490767	-104.7944566	2.00
620.00	8.80	133.78	-4085.73	-20.34	-19322.41	24949.49	40.4490510	-104.7944214	2.00
720.00	10.80	133.78	-3987.19	-30.60	-19334.18	24961.79	40.4490186	-104.7943773	2.00
820.00	12.80	133.78	-3889.31	-42.94	-19348.31	24976.57	40.4489798	-104.7943242	2.00
920.00	14.80	133.78	-3792.20	-57.32	-19364.80	24993.80	40.4489345	-104.7942623	2.00
941.08	15.22	133.78	-3771.84	-60.61	-19368.57	24997.75	40.4489241	-104.7942482	2.00
1020.00	15.22	133.78	-3695.69	-73.11	-19382.89	25012.73	40.4488848	-104.7941944	0.00
1120.00	15.22	133.78	-3599.20	-88.94	-19401.04	25031.70	40.4488349	-104.7941263	0.00
1220.00	15.22	133.78	-3502.71	-104.78	-19419.18	25050.67	40.4487851	-104.7940582	0.00
1320.00	15.22	133.78	-3406.21	-120.61	-19437.33	25069.65	40.4487352	-104.7939901	0.00
1420.00	15.22	133.78	-3309.72	-136.45	-19455.48	25088.62	40.4486853	-104.7939220	0.00
1520.00	15.22	133.78	-3213.23	-152.28	-19473.62	25107.60	40.4486355	-104.7938539	0.00
1620.00	15.22	133.78	-3116.74	-168.12	-19491.77	25126.57	40.4485856	-104.7937858	0.00
1720.00	15.22	133.78	-3020.25	-183.95	-19509.92	25145.55	40.4485357	-104.7937176	0.00
1820.00	15.22	133.78	-2923.76	-199.78	-19528.06	25164.52	40.4484859	-104.7936495	0.00
1920.00	15.22	133.78	-2827.26	-215.62	-19546.21	25183.50	40.4484360	-104.7935814	0.00
2020.00	15.22	133.78	-2730.77	-231.45	-19564.36	25202.47	40.4483861	-104.7935133	0.00
2120.00	15.22	133.78	-2634.28	-247.29	-19582.50	25221.45	40.4483363	-104.7934452	0.00
2220.00	15.22	133.78	-2537.79	-263.12	-19600.65	25240.42	40.4482864	-104.7933771	0.00
2320.00	15.22	133.78	-2441.30	-278.96	-19618.80	25259.40	40.4482366	-104.7933090	0.00
2420.00	15.22	133.78	-2344.81	-294.79	-19636.94	25278.37	40.4481867	-104.7932409	0.00
2520.00	15.22	133.78	-2248.31	-310.63	-19655.09	25297.35	40.4481368	-104.7931728	0.00
2620.00	15.22	133.78	-2151.82	-326.46	-19673.23	25316.32	40.4480870	-104.7931047	0.00
2720.00	15.22	133.78	-2055.33	-342.29	-19691.38	25335.30	40.4480371	-104.7930366	0.00
2820.00	15.22	133.78	-1958.84	-358.13	-19709.53	25354.27	40.4479872	-104.7929684	0.00
2920.00	15.22	133.78	-1862.35	-373.96	-19727.67	25373.25	40.4479374	-104.7929003	0.00
3020.00	15.22	133.78	-1765.85	-389.80	-19745.82	25392.22	40.4478875	-104.7928322	0.00
3120.00	15.22	133.78	-1669.36	-405.63	-19763.97	25411.20	40.4478377	-104.7927641	0.00
3220.00	15.22	133.78	-1572.87	-421.47	-19782.11	25430.17	40.4477878	-104.7926960	0.00
3320.00	15.22	133.78	-1476.38	-437.30	-19800.26	25449.15	40.4477379	-104.7926279	0.00
3420.00	15.22	133.78	-1379.89	-453.13	-19818.41	25468.12	40.4476881	-104.7925598	0.00
3520.00	15.22	133.78	-1283.40	-468.97	-19836.55	25487.10	40.4476382	-104.7924917	0.00
3620.00	15.22	133.78	-1186.90	-484.80	-19854.70	25506.07	40.4475883	-104.7924236	0.00
3720.00	15.22	133.78	-1090.41	-500.64	-19872.85	25525.04	40.4475385	-104.7923555	0.00
3820.00	15.22	133.78	-993.92	-516.47	-19890.99	25544.02	40.4474886	-104.7922874	0.00
3920.00	15.22	133.78	-897.43	-532.31	-19909.14	25562.99	40.4474387	-104.7922193	0.00

AG\_32C-31-L\_REV-B.0\_PWP.1as

4020.00	15.22	133.78	-800.94	-548.14	-19927.29	25581.97	40.4473889	-104.7921512	0.00
4120.00	15.22	133.78	-704.45	-563.98	-19945.43	25600.94	40.4473390	-104.7920830	0.00
4220.00	15.22	133.78	-607.95	-579.81	-19963.58	25619.92	40.4472891	-104.7920149	0.00
4320.00	15.22	133.78	-511.46	-595.64	-19981.72	25638.89	40.4472393	-104.7919468	0.00
4420.00	15.22	133.78	-414.97	-611.48	-19999.87	25657.87	40.4471894	-104.7918787	0.00
4520.00	15.22	133.78	-318.48	-627.31	-20018.02	25676.84	40.4471396	-104.7918106	0.00
4620.00	15.22	133.78	-221.99	-643.15	-20036.16	25695.82	40.4470897	-104.7917425	0.00
4720.00	15.22	133.78	-125.50	-658.98	-20054.31	25714.79	40.4470398	-104.7916744	0.00
4820.00	15.22	133.78	-29.00	-674.82	-20072.46	25733.77	40.4469900	-104.7916063	0.00
4920.00	15.22	133.78	67.49	-690.65	-20090.60	25752.74	40.4469401	-104.7915382	0.00
5020.00	15.22	133.78	163.98	-706.48	-20108.75	25771.72	40.4468902	-104.7914701	0.00
5120.00	15.22	133.78	260.47	-722.32	-20126.90	25790.69	40.4468404	-104.7914020	0.00
5220.00	15.22	133.78	356.96	-738.15	-20145.04	25809.67	40.4467905	-104.7913339	0.00
5320.00	15.22	133.78	453.46	-753.99	-20163.19	25828.64	40.4467406	-104.7912658	0.00
5420.00	15.22	133.78	549.95	-769.82	-20181.34	25847.62	40.4466908	-104.7911977	0.00
5520.00	15.22	133.78	646.44	-785.66	-20199.48	25866.59	40.4466409	-104.7911296	0.00
5620.00	15.22	133.78	742.93	-801.49	-20217.63	25885.57	40.4465910	-104.7910614	0.00
5720.00	15.22	133.78	839.42	-817.33	-20235.78	25904.54	40.4465412	-104.7909933	0.00
5820.00	15.22	133.78	935.91	-833.16	-20253.92	25923.52	40.4464913	-104.7909252	0.00
5920.00	15.22	133.78	1032.41	-848.99	-20272.07	25942.49	40.4464415	-104.7908571	0.00
6020.00	15.22	133.78	1128.90	-864.83	-20290.21	25961.47	40.4463916	-104.7907890	0.00
6120.00	15.22	133.78	1225.39	-880.66	-20308.36	25980.44	40.4463417	-104.7907209	0.00
6220.00	15.22	133.78	1321.88	-896.50	-20326.51	25999.42	40.4462919	-104.7906528	0.00
6320.00	15.22	133.78	1418.37	-912.33	-20344.65	26018.39	40.4462420	-104.7905847	0.00
6420.00	15.22	133.78	1514.86	-928.17	-20362.80	26037.36	40.4461921	-104.7905166	0.00
6520.00	15.22	133.78	1611.36	-944.00	-20380.95	26056.34	40.4461423	-104.7904485	0.00
6523.15	15.22	133.78	1614.39	-944.50	-20381.52	26056.94	40.4461407	-104.7904464	0.00
6620.00	11.22	168.53	1708.80	-952.57	-20399.58	26068.03	40.4460911	-104.7904066	9.00
6720.00	13.20	211.11	1806.73	-945.57	-20418.93	26064.08	40.4460380	-104.7904208	9.00
6820.00	19.56	234.28	1902.72	-923.19	-20438.54	26044.57	40.4459842	-104.7904910	9.00
6920.00	27.40	245.53	1994.42	-885.96	-20457.92	26009.99	40.4459311	-104.7906153	9.00
7020.00	35.76	251.95	2079.56	-834.80	-20476.59	25961.19	40.4458800	-104.7907907	9.00
7120.00	44.34	256.18	2156.05	-770.97	-20494.09	25899.36	40.4458322	-104.7910129	9.00
7220.00	53.04	259.26	2222.01	-696.05	-20509.99	25826.04	40.4457887	-104.7912764	9.00
7320.00	61.80	261.71	2275.81	-611.88	-20523.90	25743.03	40.4457508	-104.7915747	9.00
7420.00	70.60	263.78	2316.12	-520.53	-20535.48	25652.36	40.4457193	-104.7919005	9.00
7520.00	79.42	265.64	2341.97	-424.25	-20544.44	25556.28	40.4456949	-104.7922457	9.00
7620.00	88.25	267.39	2352.70	-325.42	-20550.56	25457.15	40.4456784	-104.7926019	9.00
7639.82	90.00	267.74	2353.00	-305.73	-20551.42	25437.35	40.4456761	-104.7926731	9.00
7720.00	90.00	267.74	2353.00	-226.13	-20554.67	25357.24	40.4456674	-104.7929609	0.00
7820.00	90.00	267.74	2353.00	-126.85	-20558.72	25257.32	40.4456566	-104.7933199	0.00
7920.00	90.00	267.74	2353.00	-27.57	-20562.77	25157.41	40.4456458	-104.7936789	0.00
8020.00	90.00	267.74	2353.00	71.72	-20566.81	25057.49	40.4456349	-104.7940379	0.00
8120.00	90.00	267.74	2353.00	171.00	-20570.86	24957.57	40.4456241	-104.7943969	0.00
8220.00	90.00	267.74	2353.00	270.28	-20574.91	24857.65	40.4456132	-104.7947559	0.00
8320.00	90.00	267.74	2353.00	369.57	-20578.96	24757.74	40.4456024	-104.7951149	0.00
8420.00	90.00	267.74	2353.00	468.85	-20583.01	24657.82	40.4455916	-104.7954739	0.00
8520.00	90.00	267.74	2353.00	568.13	-20587.06	24557.90	40.4455807	-104.7958329	0.00

AG\_32C-31-L\_REV-B.0\_PWP.1as

8620.00	90.00	267.74	2353.00	667.41	-20591.11	24457.98	40.4455699	-104.7961919	0.00
8720.00	90.00	267.74	2353.00	766.70	-20595.16	24358.06	40.4455590	-104.7965509	0.00
8820.00	90.00	267.74	2353.00	865.98	-20599.21	24258.15	40.4455482	-104.7969099	0.00
8920.00	90.00	267.74	2353.00	965.26	-20603.26	24158.23	40.4455373	-104.7972689	0.00
9020.00	90.00	267.74	2353.00	1064.55	-20607.31	24058.31	40.4455265	-104.7976279	0.00
9120.00	90.00	267.74	2353.00	1163.83	-20611.36	23958.39	40.4455156	-104.7979869	0.00
9220.00	90.00	267.74	2353.00	1263.11	-20615.41	23858.48	40.4455048	-104.7983459	0.00
9320.00	90.00	267.74	2353.00	1362.39	-20619.46	23758.56	40.4454939	-104.7987049	0.00
9420.00	90.00	267.74	2353.00	1461.68	-20623.51	23658.64	40.4454831	-104.7990639	0.00
9520.00	90.00	267.74	2353.00	1560.96	-20627.56	23558.72	40.4454722	-104.7994229	0.00
9620.00	90.00	267.74	2353.00	1660.24	-20631.61	23458.81	40.4454614	-104.7997819	0.00
9720.00	90.00	267.74	2353.00	1759.53	-20635.66	23358.89	40.4454505	-104.8001409	0.00
9820.00	90.00	267.74	2353.00	1858.81	-20639.71	23258.97	40.4454397	-104.8004999	0.00
9920.00	90.00	267.74	2353.00	1958.09	-20643.76	23159.05	40.4454288	-104.8008589	0.00
10020.00	90.00	267.74	2353.00	2057.37	-20647.80	23059.14	40.4454180	-104.8012179	0.00
10120.00	90.00	267.74	2353.00	2156.66	-20651.85	22959.22	40.4454071	-104.8015769	0.00
10220.00	90.00	267.74	2353.00	2255.94	-20655.90	22859.30	40.4453962	-104.8019359	0.00
10320.00	90.00	267.74	2353.00	2355.22	-20659.95	22759.38	40.4453854	-104.8022949	0.00
10420.00	90.00	267.74	2353.00	2454.51	-20664.00	22659.47	40.4453745	-104.8026539	0.00
10520.00	90.00	267.74	2353.00	2553.79	-20668.05	22559.55	40.4453636	-104.8030129	0.00
10620.00	90.00	267.74	2353.00	2653.07	-20672.10	22459.63	40.4453528	-104.8033719	0.00
10720.00	90.00	267.74	2353.00	2752.35	-20676.15	22359.71	40.4453419	-104.8037309	0.00
10820.00	90.00	267.74	2353.00	2851.64	-20680.20	22259.79	40.4453310	-104.8040899	0.00
10920.00	90.00	267.74	2353.00	2950.92	-20684.25	22159.88	40.4453202	-104.8044489	0.00
11020.00	90.00	267.74	2353.00	3050.20	-20688.30	22059.96	40.4453093	-104.8048079	0.00
11120.00	90.00	267.74	2353.00	3149.49	-20692.35	21960.04	40.4452984	-104.8051669	0.00
11220.00	90.00	267.74	2353.00	3248.77	-20696.40	21860.12	40.4452876	-104.8055259	0.00
11320.00	90.00	267.74	2353.00	3348.05	-20700.45	21760.21	40.4452767	-104.8058849	0.00
11420.00	90.00	267.74	2353.00	3447.34	-20704.50	21660.29	40.4452658	-104.8062439	0.00
11520.00	90.00	267.74	2353.00	3546.62	-20708.55	21560.37	40.4452549	-104.8066029	0.00
11620.00	90.00	267.74	2353.00	3645.90	-20712.60	21460.45	40.4452441	-104.8069619	0.00
11720.00	90.00	267.74	2353.00	3745.18	-20716.65	21360.54	40.4452332	-104.8073208	0.00
11820.00	90.00	267.74	2353.00	3844.47	-20720.70	21260.62	40.4452223	-104.8076798	0.00
11920.00	90.00	267.74	2353.00	3943.75	-20724.75	21160.70	40.4452114	-104.8080388	0.00
12020.00	90.00	267.74	2353.00	4043.03	-20728.79	21060.78	40.4452006	-104.8083978	0.00
12120.00	90.00	267.74	2353.00	4142.32	-20732.84	20960.87	40.4451897	-104.8087568	0.00
12220.00	90.00	267.74	2353.00	4241.60	-20736.89	20860.95	40.4451788	-104.8091158	0.00
12320.00	90.00	267.74	2353.00	4340.88	-20740.94	20761.03	40.4451679	-104.8094748	0.00
12420.00	90.00	267.74	2353.00	4440.16	-20744.99	20661.11	40.4451570	-104.8098338	0.00
12520.00	90.00	267.74	2353.00	4539.45	-20749.04	20561.20	40.4451461	-104.8101928	0.00
12620.00	90.00	267.74	2353.00	4638.73	-20753.09	20461.28	40.4451352	-104.8105518	0.00
12720.00	90.00	267.74	2353.00	4738.01	-20757.14	20361.36	40.4451244	-104.8109108	0.00
12820.00	90.00	267.74	2353.00	4837.30	-20761.19	20261.44	40.4451135	-104.8112698	0.00
12920.00	90.00	267.74	2353.00	4936.58	-20765.24	20161.53	40.4451026	-104.8116288	0.00
13020.00	90.00	267.74	2353.00	5035.86	-20769.29	20061.61	40.4450917	-104.8119878	0.00
13120.00	90.00	267.74	2353.00	5135.14	-20773.34	19961.69	40.4450808	-104.8123468	0.00
13220.00	90.00	267.74	2353.00	5234.43	-20777.39	19861.77	40.4450699	-104.8127058	0.00
13320.00	90.00	267.74	2353.00	5333.71	-20781.44	19761.85	40.4450590	-104.8130648	0.00

AG\_32C-31-L\_REV-B.0\_PWP.1as

13420.00	90.00	267.74	2353.00	5432.99	-20785.49	19661.94	40.4450481	-104.8134238	0.00
13520.00	90.00	267.74	2353.00	5532.28	-20789.54	19562.02	40.4450372	-104.8137828	0.00
13620.00	90.00	267.74	2353.00	5631.56	-20793.59	19462.10	40.4450263	-104.8141418	0.00
13720.00	90.00	267.74	2353.00	5730.84	-20797.64	19362.18	40.4450154	-104.8145008	0.00
13820.00	90.00	267.74	2353.00	5830.12	-20801.69	19262.27	40.4450045	-104.8148597	0.00
13920.00	90.00	267.74	2353.00	5929.41	-20805.74	19162.35	40.4449936	-104.8152187	0.00
14020.00	90.00	267.74	2353.00	6028.69	-20809.78	19062.43	40.4449827	-104.8155777	0.00
14120.00	90.00	267.74	2353.00	6127.97	-20813.83	18962.51	40.4449718	-104.8159367	0.00
14220.00	90.00	267.74	2353.00	6227.26	-20817.88	18862.60	40.4449609	-104.8162957	0.00
14320.00	90.00	267.74	2353.00	6326.54	-20821.93	18762.68	40.4449500	-104.8166547	0.00
14420.00	90.00	267.74	2353.00	6425.82	-20825.98	18662.76	40.4449391	-104.8170137	0.00
14520.00	90.00	267.74	2353.00	6525.10	-20830.03	18562.84	40.4449282	-104.8173727	0.00
14620.00	90.00	267.74	2353.00	6624.39	-20834.08	18462.93	40.4449173	-104.8177317	0.00
14720.00	90.00	267.74	2353.00	6723.67	-20838.13	18363.01	40.4449063	-104.8180907	0.00
14820.00	90.00	267.74	2353.00	6822.95	-20842.18	18263.09	40.4448954	-104.8184497	0.00
14920.00	90.00	267.74	2353.00	6922.24	-20846.23	18163.17	40.4448845	-104.8188087	0.00
15020.00	90.00	267.74	2353.00	7021.52	-20850.28	18063.26	40.4448736	-104.8191677	0.00
15120.00	90.00	267.74	2353.00	7120.80	-20854.33	17963.34	40.4448627	-104.8195267	0.00
15220.00	90.00	267.74	2353.00	7220.08	-20858.38	17863.42	40.4448518	-104.8198857	0.00
15320.00	90.00	267.74	2353.00	7319.37	-20862.43	17763.50	40.4448409	-104.8202446	0.00
15420.00	90.00	267.74	2353.00	7418.65	-20866.48	17663.58	40.4448299	-104.8206036	0.00
15520.00	90.00	267.74	2353.00	7517.93	-20870.53	17563.67	40.4448190	-104.8209626	0.00
15620.00	90.00	267.74	2353.00	7617.22	-20874.58	17463.75	40.4448081	-104.8213216	0.00
15720.00	90.00	267.74	2353.00	7716.50	-20878.63	17363.83	40.4447972	-104.8216806	0.00
15820.00	90.00	267.74	2353.00	7815.78	-20882.68	17263.91	40.4447863	-104.8220396	0.00
15920.00	90.00	267.74	2353.00	7915.06	-20886.73	17164.00	40.4447753	-104.8223986	0.00
16020.00	90.00	267.74	2353.00	8014.35	-20890.77	17064.08	40.4447644	-104.8227576	0.00
16120.00	90.00	267.74	2353.00	8113.63	-20894.82	16964.16	40.4447535	-104.8231166	0.00
16220.00	90.00	267.74	2353.00	8212.91	-20898.87	16864.24	40.4447426	-104.8234756	0.00
16320.00	90.00	267.74	2353.00	8312.20	-20902.92	16764.33	40.4447316	-104.8238346	0.00
16420.00	90.00	267.74	2353.00	8411.48	-20906.97	16664.41	40.4447207	-104.8241936	0.00
16520.00	90.00	267.74	2353.00	8510.76	-20911.02	16564.49	40.4447098	-104.8245525	0.00
16620.00	90.00	267.74	2353.00	8610.05	-20915.07	16464.57	40.4446988	-104.8249115	0.00
16720.00	90.00	267.74	2353.00	8709.33	-20919.12	16364.66	40.4446879	-104.8252705	0.00
16820.00	90.00	267.74	2353.00	8808.61	-20923.17	16264.74	40.4446770	-104.8256295	0.00
16920.00	90.00	267.74	2353.00	8907.89	-20927.22	16164.82	40.4446660	-104.8259885	0.00
17020.00	90.00	267.74	2353.00	9007.18	-20931.27	16064.90	40.4446551	-104.8263475	0.00
17120.00	90.00	267.74	2353.00	9106.46	-20935.32	15964.99	40.4446442	-104.8267065	0.00
17220.00	90.00	267.74	2353.00	9205.74	-20939.37	15865.07	40.4446332	-104.8270655	0.00
17320.00	90.00	267.74	2353.00	9305.03	-20943.42	15765.15	40.4446223	-104.8274245	0.00
17420.00	90.00	267.74	2353.00	9404.31	-20947.47	15665.23	40.4446113	-104.8277835	0.00
17520.00	90.00	267.74	2353.00	9503.59	-20951.52	15565.31	40.4446004	-104.8281424	0.00
17620.00	90.00	267.74	2353.00	9602.87	-20955.57	15465.40	40.4445895	-104.8285014	0.00
17720.00	90.00	267.74	2353.00	9702.16	-20959.62	15365.48	40.4445785	-104.8288604	0.00
17820.00	90.00	267.74	2353.00	9801.44	-20963.67	15265.56	40.4445676	-104.8292194	0.00
17920.00	90.00	267.74	2353.00	9900.72	-20967.72	15165.64	40.4445566	-104.8295784	0.00
18020.00	90.00	267.74	2353.00	10000.01	-20971.76	15065.73	40.4445457	-104.8299374	0.00
18120.00	90.00	267.74	2353.00	10099.29	-20975.81	14965.81	40.4445347	-104.8302964	0.00

				AG_32C-31-L_REV-B.0_PWP.1as						
18220.00	90.00	267.74	2353.00	10198.57	-20979.86	14865.89	40.4445238	-104.8306554	0.00	
18320.00	90.00	267.74	2353.00	10297.85	-20983.91	14765.97	40.4445128	-104.8310144	0.00	
18420.00	90.00	267.74	2353.00	10397.14	-20987.96	14666.06	40.4445019	-104.8313734	0.00	
18520.00	90.00	267.74	2353.00	10496.42	-20992.01	14566.14	40.4444909	-104.8317323	0.00	
18620.00	90.00	267.74	2353.00	10595.70	-20996.06	14466.22	40.4444800	-104.8320913	0.00	
18665.28	90.00	267.74	2353.00	10640.66	-20997.90	14420.98	40.4444750	-104.8322539	0.00	





# Planned Wellpath Report

AG 32C-31-L REV-B.0 PWP

Page 1 of 10



## REFERENCE WELLPATH IDENTIFICATION

Operator	SYNERGY RESOURCES CORPORATION	Slot	SLOT#11 AG 32C-31-L (1022'FNL & 585'FEL SEC 32)
Area	COLORADO	Well	AG 32C-31-L
Field	WELD COUNTY (NAD83,TRUE NORTH)	Wellbore	AG 32C-31-L PWB
Facility	SEC.32-T06N-R66W		

## REPORT SETUP INFORMATION

Projection System	NAD83 / Lambert Colorado SP, Northern Zone (501), US feet	Software System	WellArchitect® 5.0
North Reference	True	User	Wagnjam
Scale	0.999963	Report Generated	9/27/2016 at 11:58:09 AM
Convergence at slot	0.46° East	Database/Source file	WA_DEN_Denver_Defn/AG_32C-31-L_REV-B.0_PWP.xml

## WELLPATH LOCATION

	Local coordinates		Grid coordinates		Geographic coordinates	
	North[ft]	East[ft]	Easting[US ft]	Northing[US ft]	Latitude	Longitude
Slot Location	-146.43	-136.07	3196342.16	1407233.98	40°26'56.814"N	104°47'40.232"W
Facility Reference Pt			3196477.05	1407381.48	40°26'58.261"N	104°47'38.472"W
Field Reference Pt			3171284.48	1426358.81	40°30'07.643"N	104°53'02.634"W

## WELLPATH DATUM

Calculation method	Minimum curvature	PRECISION 462 (20') (RKB) to Facility Vertical Datum	4724.00ft
Horizontal Reference Pt	Slot	PRECISION 462 (20') (RKB) to Mean Sea Level	4724.00ft
Vertical Reference Pt	PRECISION 462 (20') (RKB)	PRECISION 462 (20') (RKB) to Mud Line at Slot (SLOT#11 AG 32C-31-L (1022'FNL & 585'FEL SEC 32))	4724.00ft
MD Reference Pt	PRECISION 462 (20') (RKB)	Section Origin	N 0.00, E 0.00 ft
Field Vertical Reference	Mean Sea Level	Section Azimuth	260.87°

# Planned Wellpath Report

AG 32C-31-L REV-B.0 PWP

Page 2 of 10

## REFERENCE WELLPATH IDENTIFICATION

Operator	SYNERGY RESOURCES CORPORATION	Slot	SLOT#11 AG 32C-31-L (1022'FNL & 585'FEL SEC 32)
Area	COLORADO	Well	AG 32C-31-L
Field	WELD COUNTY (NAD83,TRUE NORTH)	Wellbore	AG 32C-31-L PWB
Facility	SEC.32-T06N-R66W		

## WELLPATH DATA (199 stations) † = interpolated/extrapolated station

MD [ft]	Inclination [°]	Azimuth [°]	TVD [ft]	Vert Sect [ft]	North [ft]	East [ft]	DLS [°/100ft]	Comments
0.00†	0.000	133.780	0.00	0.00	0.00	0.00	0.00	
20.00	0.000	133.780	20.00	0.00	0.00	0.00	0.00	Tie On
120.00†	0.000	133.780	120.00	0.00	0.00	0.00	0.00	
200.00	0.000	133.780	200.00	0.00	0.00	0.00	0.00	End of Tangent
220.00†	0.400	133.780	220.00	-0.04	-0.05	0.05	2.00	
320.00†	2.400	133.780	319.96	-1.52	-1.74	1.81	2.00	
420.00†	4.400	133.780	419.78	-5.09	-5.84	6.10	2.00	
520.00†	6.400	133.780	519.33	-10.77	-12.35	12.89	2.00	
620.00†	8.400	133.780	618.50	-18.53	-21.26	22.19	2.00	
720.00†	10.400	133.780	717.15	-28.38	-32.56	33.98	2.00	
820.00†	12.400	133.780	815.17	-40.30	-46.24	48.25	2.00	
920.00†	14.400	133.780	912.44	-54.28	-62.27	64.98	2.00	
961.08	15.222	133.780	952.16	-60.61	-69.54	72.56	2.00	End of Build
1020.00†	15.222	133.780	1009.01	-69.94	-80.24	83.73	0.00	
1120.00†	15.222	133.780	1105.50	-85.78	-98.41	102.69	0.00	
1220.00†	15.222	133.780	1202.00	-101.61	-116.57	121.65	0.00	
1320.00†	15.222	133.780	1298.49	-117.45	-134.74	140.60	0.00	
1420.00†	15.222	133.780	1394.98	-133.28	-152.90	159.56	0.00	
1520.00†	15.222	133.780	1491.47	-149.11	-171.07	178.52	0.00	
1620.00†	15.222	133.780	1587.96	-164.95	-189.23	197.47	0.00	
1720.00†	15.222	133.780	1684.45	-180.78	-207.40	216.43	0.00	
1820.00†	15.222	133.780	1780.95	-196.62	-225.57	235.39	0.00	
1920.00†	15.222	133.780	1877.44	-212.45	-243.73	254.34	0.00	
2020.00†	15.222	133.780	1973.93	-228.29	-261.90	273.30	0.00	
2120.00†	15.222	133.780	2070.42	-244.12	-280.06	292.26	0.00	
2220.00†	15.222	133.780	2166.91	-259.96	-298.23	311.21	0.00	
2320.00†	15.222	133.780	2263.40	-275.79	-316.39	330.17	0.00	
2420.00†	15.222	133.780	2359.90	-291.62	-334.56	349.13	0.00	
2520.00†	15.222	133.780	2456.39	-307.46	-352.73	368.08	0.00	
2620.00†	15.222	133.780	2552.88	-323.29	-370.89	387.04	0.00	



# Planned Wellpath Report

AG 32C-31-L REV-B.0 PWP

Page 3 of 10



## REFERENCE WELLPATH IDENTIFICATION

Operator	SYNERGY RESOURCES CORPORATION	Slot	SLOT#11 AG 32C-31-L (1022'FNL & 585'FEL SEC 32)
Area	COLORADO	Well	AG 32C-31-L
Field	WELD COUNTY (NAD83,TRUE NORTH)	Wellbore	AG 32C-31-L PWB
Facility	SEC.32-T06N-R66W		

## WELLPATH DATA (199 stations) † = interpolated/extrapolated station

MD [ft]	Inclination [°]	Azimuth [°]	TVD [ft]	Vert Sect [ft]	North [ft]	East [ft]	DLS [°/100ft]	Comments
2720.00†	15.222	133.780	2649.37	-339.13	-389.06	405.99	0.00	
2820.00†	15.222	133.780	2745.86	-354.96	-407.22	424.95	0.00	
2920.00†	15.222	133.780	2842.35	-370.80	-425.39	443.91	0.00	
3020.00†	15.222	133.780	2938.85	-386.63	-443.55	462.86	0.00	
3120.00†	15.222	133.780	3035.34	-402.46	-461.72	481.82	0.00	
3220.00†	15.222	133.780	3131.83	-418.30	-479.89	500.78	0.00	
3320.00†	15.222	133.780	3228.32	-434.13	-498.05	519.73	0.00	
3420.00†	15.222	133.780	3324.81	-449.97	-516.22	538.69	0.00	
3520.00†	15.222	133.780	3421.31	-465.80	-534.38	557.65	0.00	
3620.00†	15.222	133.780	3517.80	-481.64	-552.55	576.60	0.00	
3720.00†	15.222	133.780	3614.29	-497.47	-570.71	595.56	0.00	
3820.00†	15.222	133.780	3710.78	-513.31	-588.88	614.52	0.00	
3920.00†	15.222	133.780	3807.27	-529.14	-607.04	633.47	0.00	
4020.00†	15.222	133.780	3903.76	-544.97	-625.21	652.43	0.00	
4120.00†	15.222	133.780	4000.26	-560.81	-643.38	671.39	0.00	
4220.00†	15.222	133.780	4096.75	-576.64	-661.54	690.34	0.00	
4320.00†	15.222	133.780	4193.24	-592.48	-679.71	709.30	0.00	
4420.00†	15.222	133.780	4289.73	-608.31	-697.87	728.26	0.00	
4520.00†	15.222	133.780	4386.22	-624.15	-716.04	747.21	0.00	
4620.00†	15.222	133.780	4482.71	-639.98	-734.20	766.17	0.00	
4720.00†	15.222	133.780	4579.21	-655.81	-752.37	785.13	0.00	
4820.00†	15.222	133.780	4675.70	-671.65	-770.54	804.08	0.00	
4920.00†	15.222	133.780	4772.19	-687.48	-788.70	823.04	0.00	
5020.00†	15.222	133.780	4868.68	-703.32	-806.87	842.00	0.00	
5120.00†	15.222	133.780	4965.17	-719.15	-825.03	860.95	0.00	
5220.00†	15.222	133.780	5061.67	-734.99	-843.20	879.91	0.00	
5320.00†	15.222	133.780	5158.16	-750.82	-861.36	898.87	0.00	
5420.00†	15.222	133.780	5254.65	-766.66	-879.53	917.82	0.00	
5520.00†	15.222	133.780	5351.14	-782.49	-897.70	936.78	0.00	
5620.00†	15.222	133.780	5447.63	-798.32	-915.86	955.73	0.00	

# Planned Wellpath Report

AG 32C-31-L REV-B.0 PWP

Page 4 of 10

## REFERENCE WELLPATH IDENTIFICATION

Operator	SYNERGY RESOURCES CORPORATION	Slot	SLOT#11 AG 32C-31-L (1022'FNL & 585'FEL SEC 32)
Area	COLORADO	Well	AG 32C-31-L
Field	WELD COUNTY (NAD83,TRUE NORTH)	Wellbore	AG 32C-31-L PWB
Facility	SEC.32-T06N-R66W		

## WELLPATH DATA (199 stations) † = interpolated/extrapolated station

MD [ft]	Inclination [°]	Azimuth [°]	TVD [ft]	Vert Sect [ft]	North [ft]	East [ft]	DLS [°/100ft]	Comments
5720.00†	15.222	133.780	5544.12	-814.16	-934.03	974.69	0.00	
5820.00†	15.222	133.780	5640.62	-829.99	-952.19	993.65	0.00	
5920.00†	15.222	133.780	5737.11	-845.83	-970.36	1012.60	0.00	
6020.00†	15.222	133.780	5833.60	-861.66	-988.52	1031.56	0.00	
6120.00†	15.222	133.780	5930.09	-877.50	-1006.69	1050.52	0.00	
6220.00†	15.222	133.780	6026.58	-893.33	-1024.86	1069.47	0.00	
6320.00†	15.222	133.780	6123.07	-909.16	-1043.02	1088.43	0.00	
6420.00†	15.222	133.780	6219.57	-925.00	-1061.19	1107.39	0.00	
6520.00†	15.222	133.780	6316.06	-940.83	-1079.35	1126.34	0.00	
6543.15	15.222	133.780	6338.39	-944.50	-1083.56	1130.73	0.00	End of Tangent
6620.00†	11.641	159.689	6413.20	-952.10	-1097.83	1140.72	9.00	
6720.00†	12.320	203.991	6511.22	-948.22	-1117.07	1139.88	9.00	
6820.00†	18.112	230.949	6607.79	-928.87	-1136.65	1123.44	9.00	
6920.00†	25.772	243.803	6700.53	-894.55	-1156.08	1091.80	9.00	
6945.17†	27.821	245.949	6723.00	-883.64	-1160.89	1081.52	9.00	SHARON SPRINGS
6986.55†	31.249	248.905	6759.00	-863.80	-1168.70	1062.68	9.00	NIO-A
7020.00†	34.062	250.896	6787.16	-846.09	-1174.89	1045.73	9.00	
7120.00†	42.613	255.444	6865.54	-784.68	-1192.59	986.38	9.00	
7141.33†	44.457	256.222	6881.00	-770.05	-1196.19	972.14	9.00	NIO-B
7220.00†	51.294	258.707	6933.74	-711.84	-1208.78	915.21	9.00	
7251.77†	54.069	259.576	6953.00	-686.59	-1213.53	890.40	9.00	NIO-C
7320.00†	60.045	261.256	6990.09	-629.36	-1223.03	833.96	9.00	
7420.00†	68.838	263.388	7033.19	-539.27	-1235.01	744.64	9.00	
7455.18†	71.938	264.075	7045.00	-506.18	-1238.63	711.70	9.00	FORT HAYS
7520.00†	77.654	265.280	7061.99	-443.79	-1244.42	649.45	9.00	
7545.76†	79.928	265.743	7067.00	-418.60	-1246.40	624.26	9.00	CODELL
7620.00†	86.483	267.047	7075.78	-345.27	-1251.02	550.73	9.00	
7659.82	90.000	267.737	7077.00 <sup>1</sup>	-305.73	-1252.83	510.97	9.00	End of 3D Arc
7720.00†	90.000	267.737	7077.00	-245.99	-1255.21	450.84	0.00	
7820.00†	90.000	267.737	7077.00	-146.71	-1259.16	350.92	0.00	



# Planned Wellpath Report

AG 32C-31-L REV-B.0 PWP

Page 5 of 10



## REFERENCE WELLPATH IDENTIFICATION

Operator	SYNERGY RESOURCES CORPORATION	Slot	SLOT#11 AG 32C-31-L (1022'FNL & 585'FEL SEC 32)
Area	COLORADO	Well	AG 32C-31-L
Field	WELD COUNTY (NAD83,TRUE NORTH)	Wellbore	AG 32C-31-L PWB
Facility	SEC.32-T06N-R66W		

## WELLPATH DATA (199 stations) † = interpolated/extrapolated station

MD [ft]	Inclination [°]	Azimuth [°]	TVD [ft]	Vert Sect [ft]	North [ft]	East [ft]	DLS [°/100ft]	Comments
7920.00†	90.000	267.737	7077.00	-47.42	-1263.11	251.00	0.00	
8020.00†	90.000	267.737	7077.00	51.86	-1267.06	151.08	0.00	
8120.00†	90.000	267.737	7077.00	151.14	-1271.00	51.15	0.00	
8220.00†	90.000	267.737	7077.00	250.43	-1274.95	-48.77	0.00	
8320.00†	90.000	267.737	7077.00	349.71	-1278.90	-148.69	0.00	
8420.00†	90.000	267.737	7077.00	448.99	-1282.85	-248.61	0.00	
8520.00†	90.000	267.737	7077.00	548.27	-1286.80	-348.53	0.00	
8620.00†	90.000	267.737	7077.00	647.56	-1290.75	-448.46	0.00	
8720.00†	90.000	267.737	7077.00	746.84	-1294.70	-548.38	0.00	
8820.00†	90.000	267.737	7077.00	846.12	-1298.64	-648.30	0.00	
8920.00†	90.000	267.737	7077.00	945.41	-1302.59	-748.22	0.00	
9020.00†	90.000	267.737	7077.00	1044.69	-1306.54	-848.14	0.00	
9120.00†	90.000	267.737	7077.00	1143.97	-1310.49	-948.07	0.00	
9220.00†	90.000	267.737	7077.00	1243.26	-1314.44	-1047.99	0.00	
9320.00†	90.000	267.737	7077.00	1342.54	-1318.39	-1147.91	0.00	
9420.00†	90.000	267.737	7077.00	1441.82	-1322.34	-1247.83	0.00	
9520.00†	90.000	267.737	7077.00	1541.10	-1326.28	-1347.75	0.00	
9620.00†	90.000	267.737	7077.00	1640.39	-1330.23	-1447.68	0.00	
9720.00†	90.000	267.737	7077.00	1739.67	-1334.18	-1547.60	0.00	
9820.00†	90.000	267.737	7077.00	1838.95	-1338.13	-1647.52	0.00	
9920.00†	90.000	267.737	7077.00	1938.24	-1342.08	-1747.44	0.00	
10020.00†	90.000	267.737	7077.00	2037.52	-1346.03	-1847.36	0.00	
10120.00†	90.000	267.737	7077.00	2136.80	-1349.98	-1947.29	0.00	
10220.00†	90.000	267.737	7077.00	2236.08	-1353.93	-2047.21	0.00	
10320.00†	90.000	267.737	7077.00	2335.37	-1357.87	-2147.13	0.00	
10420.00†	90.000	267.737	7077.00	2434.65	-1361.82	-2247.05	0.00	
10520.00†	90.000	267.737	7077.00	2533.93	-1365.77	-2346.97	0.00	
10620.00†	90.000	267.737	7077.00	2633.22	-1369.72	-2446.90	0.00	
10720.00†	90.000	267.737	7077.00	2732.50	-1373.67	-2546.82	0.00	
10820.00†	90.000	267.737	7077.00	2831.78	-1377.62	-2646.74	0.00	

# Planned Wellpath Report

AG 32C-31-L REV-B.0 PWP

Page 6 of 10

## REFERENCE WELLPATH IDENTIFICATION

Operator	SYNERGY RESOURCES CORPORATION	Slot	SLOT#11 AG 32C-31-L (1022'FNL & 585'FEL SEC 32)
Area	COLORADO	Well	AG 32C-31-L
Field	WELD COUNTY (NAD83,TRUE NORTH)	Wellbore	AG 32C-31-L PWB
Facility	SEC.32-T06N-R66W		

## WELLPATH DATA (199 stations) † = interpolated/extrapolated station

MD [ft]	Inclination [°]	Azimuth [°]	TVD [ft]	Vert Sect [ft]	North [ft]	East [ft]	DLS [°/100ft]	Comments
10920.00†	90.000	267.737	7077.00	2931.06	-1381.57	-2746.66	0.00	
11020.00†	90.000	267.737	7077.00	3030.35	-1385.51	-2846.58	0.00	
11120.00†	90.000	267.737	7077.00	3129.63	-1389.46	-2946.51	0.00	
11220.00†	90.000	267.737	7077.00	3228.91	-1393.41	-3046.43	0.00	
11320.00†	90.000	267.737	7077.00	3328.20	-1397.36	-3146.35	0.00	
11420.00†	90.000	267.737	7077.00	3427.48	-1401.31	-3246.27	0.00	
11520.00†	90.000	267.737	7077.00	3526.76	-1405.26	-3346.19	0.00	
11620.00†	90.000	267.737	7077.00	3626.04	-1409.21	-3446.12	0.00	
11720.00†	90.000	267.737	7077.00	3725.33	-1413.15	-3546.04	0.00	
11820.00†	90.000	267.737	7077.00	3824.61	-1417.10	-3645.96	0.00	
11920.00†	90.000	267.737	7077.00	3923.89	-1421.05	-3745.88	0.00	
12020.00†	90.000	267.737	7077.00	4023.18	-1425.00	-3845.80	0.00	
12120.00†	90.000	267.737	7077.00	4122.46	-1428.95	-3945.73	0.00	
12220.00†	90.000	267.737	7077.00	4221.74	-1432.90	-4045.65	0.00	
12320.00†	90.000	267.737	7077.00	4321.02	-1436.85	-4145.57	0.00	
12420.00†	90.000	267.737	7077.00	4420.31	-1440.79	-4245.49	0.00	
12520.00†	90.000	267.737	7077.00	4519.59	-1444.74	-4345.41	0.00	
12620.00†	90.000	267.737	7077.00	4618.87	-1448.69	-4445.34	0.00	
12720.00†	90.000	267.737	7077.00	4718.16	-1452.64	-4545.26	0.00	
12820.00†	90.000	267.737	7077.00	4817.44	-1456.59	-4645.18	0.00	
12920.00†	90.000	267.737	7077.00	4916.72	-1460.54	-4745.10	0.00	
13020.00†	90.000	267.737	7077.00	5016.00	-1464.49	-4845.02	0.00	
13120.00†	90.000	267.737	7077.00	5115.29	-1468.43	-4944.95	0.00	
13220.00†	90.000	267.737	7077.00	5214.57	-1472.38	-5044.87	0.00	
13320.00†	90.000	267.737	7077.00	5313.85	-1476.33	-5144.79	0.00	
13420.00†	90.000	267.737	7077.00	5413.14	-1480.28	-5244.71	0.00	
13520.00†	90.000	267.737	7077.00	5512.42	-1484.23	-5344.63	0.00	
13620.00†	90.000	267.737	7077.00	5611.70	-1488.18	-5444.56	0.00	
13720.00†	90.000	267.737	7077.00	5710.98	-1492.13	-5544.48	0.00	
13820.00†	90.000	267.737	7077.00	5810.27	-1496.07	-5644.40	0.00	





# Planned Wellpath Report

AG 32C-31-L REV-B.0 PWP

Page 7 of 10



## REFERENCE WELLPATH IDENTIFICATION

Operator	SYNERGY RESOURCES CORPORATION	Slot	SLOT#11 AG 32C-31-L (1022'FNL & 585'FEL SEC 32)
Area	COLORADO	Well	AG 32C-31-L
Field	WELD COUNTY (NAD83,TRUE NORTH)	Wellbore	AG 32C-31-L PWB
Facility	SEC.32-T06N-R66W		

## WELLPATH DATA (199 stations) † = interpolated/extrapolated station

MD [ft]	Inclination [°]	Azimuth [°]	TVD [ft]	Vert Sect [ft]	North [ft]	East [ft]	DLS [°/100ft]	Comments
13920.00†	90.000	267.737	7077.00	5909.55	-1500.02	-5744.32	0.00	
14020.00†	90.000	267.737	7077.00	6008.83	-1503.97	-5844.24	0.00	
14120.00†	90.000	267.737	7077.00	6108.12	-1507.92	-5944.17	0.00	
14220.00†	90.000	267.737	7077.00	6207.40	-1511.87	-6044.09	0.00	
14320.00†	90.000	267.737	7077.00	6306.68	-1515.82	-6144.01	0.00	
14420.00†	90.000	267.737	7077.00	6405.97	-1519.77	-6243.93	0.00	
14520.00†	90.000	267.737	7077.00	6505.25	-1523.72	-6343.85	0.00	
14620.00†	90.000	267.737	7077.00	6604.53	-1527.66	-6443.78	0.00	
14720.00†	90.000	267.737	7077.00	6703.81	-1531.61	-6543.70	0.00	
14820.00†	90.000	267.737	7077.00	6803.10	-1535.56	-6643.62	0.00	
14920.00†	90.000	267.737	7077.00	6902.38	-1539.51	-6743.54	0.00	
15020.00†	90.000	267.737	7077.00	7001.66	-1543.46	-6843.46	0.00	
15120.00†	90.000	267.737	7077.00	7100.95	-1547.41	-6943.39	0.00	
15220.00†	90.000	267.737	7077.00	7200.23	-1551.36	-7043.31	0.00	
15320.00†	90.000	267.737	7077.00	7299.51	-1555.30	-7143.23	0.00	
15420.00†	90.000	267.737	7077.00	7398.79	-1559.25	-7243.15	0.00	
15520.00†	90.000	267.737	7077.00	7498.08	-1563.20	-7343.07	0.00	
15620.00†	90.000	267.737	7077.00	7597.36	-1567.15	-7443.00	0.00	
15720.00†	90.000	267.737	7077.00	7696.64	-1571.10	-7542.92	0.00	
15820.00†	90.000	267.737	7077.00	7795.93	-1575.05	-7642.84	0.00	
15920.00†	90.000	267.737	7077.00	7895.21	-1579.00	-7742.76	0.00	
16020.00†	90.000	267.737	7077.00	7994.49	-1582.94	-7842.68	0.00	
16120.00†	90.000	267.737	7077.00	8093.77	-1586.89	-7942.61	0.00	
16220.00†	90.000	267.737	7077.00	8193.06	-1590.84	-8042.53	0.00	
16320.00†	90.000	267.737	7077.00	8292.34	-1594.79	-8142.45	0.00	
16420.00†	90.000	267.737	7077.00	8391.62	-1598.74	-8242.37	0.00	
16520.00†	90.000	267.737	7077.00	8490.91	-1602.69	-8342.29	0.00	
16620.00†	90.000	267.737	7077.00	8590.19	-1606.64	-8442.22	0.00	
16720.00†	90.000	267.737	7077.00	8689.47	-1610.58	-8542.14	0.00	
16820.00†	90.000	267.737	7077.00	8788.75	-1614.53	-8642.06	0.00	



# Planned Wellpath Report

AG 32C-31-L REV-B.0 PWP

Page 8 of 10



## REFERENCE WELLPATH IDENTIFICATION

Operator	SYNERGY RESOURCES CORPORATION	Slot	SLOT#11 AG 32C-31-L (1022'FNL & 585'FEL SEC 32)
Area	COLORADO	Well	AG 32C-31-L
Field	WELD COUNTY (NAD83,TRUE NORTH)	Wellbore	AG 32C-31-L PWB
Facility	SEC.32-T06N-R66W		

## WELLPATH DATA (199 stations) † = interpolated/extrapolated station

MD [ft]	Inclination [°]	Azimuth [°]	TVD [ft]	Vert Sect [ft]	North [ft]	East [ft]	DLS [°/100ft]	Comments
16920.00†	90.000	267.737	7077.00	8888.04	-1618.48	-8741.98	0.00	
17020.00†	90.000	267.737	7077.00	8987.32	-1622.43	-8841.90	0.00	
17120.00†	90.000	267.737	7077.00	9086.60	-1626.38	-8941.83	0.00	
17220.00†	90.000	267.737	7077.00	9185.89	-1630.33	-9041.75	0.00	
17320.00†	90.000	267.737	7077.00	9285.17	-1634.28	-9141.67	0.00	
17420.00†	90.000	267.737	7077.00	9384.45	-1638.22	-9241.59	0.00	
17520.00†	90.000	267.737	7077.00	9483.73	-1642.17	-9341.51	0.00	
17620.00†	90.000	267.737	7077.00	9583.02	-1646.12	-9441.44	0.00	
17720.00†	90.000	267.737	7077.00	9682.30	-1650.07	-9541.36	0.00	
17820.00†	90.000	267.737	7077.00	9781.58	-1654.02	-9641.28	0.00	
17920.00†	90.000	267.737	7077.00	9880.87	-1657.97	-9741.20	0.00	
18020.00†	90.000	267.737	7077.00	9980.15	-1661.92	-9841.12	0.00	
18120.00†	90.000	267.737	7077.00	10079.43	-1665.86	-9941.05	0.00	
18220.00†	90.000	267.737	7077.00	10178.71	-1669.81	-10040.97	0.00	
18320.00†	90.000	267.737	7077.00	10278.00	-1673.76	-10140.89	0.00	
18420.00†	90.000	267.737	7077.00	10377.28	-1677.71	-10240.81	0.00	
18520.00†	90.000	267.737	7077.00	10476.56	-1681.66	-10340.73	0.00	
18620.00†	90.000	267.737	7077.00	10575.85	-1685.61	-10440.66	0.00	
18685.28	90.000	267.737	7077.00 <sup>2</sup>	10640.66	-1688.19	-10505.89	0.00	End of Tangent

## HOLE & CASING SECTIONS - Ref Wellbore: AG 32C-31-L PWB Ref Wellpath: AG 32C-31-L REV-B.0 PWP

String/Diameter	Start MD [ft]	End MD [ft]	Interval [ft]	Start TVD [ft]	End TVD [ft]	Start N/S [ft]	Start E/W [ft]	End N/S [ft]	End E/W [ft]
13.5in Open Hole	20.00	1800.00	1780.00	20.00	1761.65	0.00	0.00	-221.93	231.59
8.5in Open Hole	1800.00	18685.28	16885.28	1761.65	7077.00	-221.93	231.59	-1688.19	-10505.89





# Planned Wellpath Report

AG 32C-31-L REV-B.0 PWP

Page 9 of 10



## REFERENCE WELLPATH IDENTIFICATION

Operator	SYNERGY RESOURCES CORPORATION	Slot	SLOT#11 AG 32C-31-L (1022'FNL & 585'FEL SEC 32)
Area	COLORADO	Well	AG 32C-31-L
Field	WELD COUNTY (NAD83,TRUE NORTH)	Wellbore	AG 32C-31-L PWB
Facility	SEC.32-T06N-R66W		

## TARGETS

Name	MD [ft]	TVD [ft]	North [ft]	East [ft]	Grid East [US ft]	Grid North [US ft]	Latitude	Longitude	Shape
SEC.31-T06N-R66W		-20.00	146.43	136.07	3196477.05	1407381.48	40°26'58.261"N	104°47'38.472"W	polygon
SEC.32-T06N-R66W		-20.00	146.43	136.07	3196477.05	1407381.48	40°26'58.261"N	104°47'38.472"W	polygon
2) AG 32C-31-L BHL REV-1 ON PLAT (CDLL, 2269'FNL & 75'FWL SEC 31)	18685.28	7077.00	-1688.19	-10505.89	3185850.44	1405462.33	40°26'40.110"N	104°49'56.114"W	circle
1) AG 32C-31-L TOP OF PROD (2288'FNL & 75'FEL SEC 32)	7659.82	7077.00	-1252.83	510.97	3196863.06	1405985.30	40°26'44.434"N	104°47'33.623"W	circle

## SURVEY PROGRAM - Ref Wellbore: AG 32C-31-L PWB Ref Wellpath: AG 32C-31-L REV-B.0 PWP

Start MD [ft]	End MD [ft]	Positional Uncertainty Model	Log Name/Comment	Wellbore
20.00	1800.00	Custom BHI NaviTrak (Standard Rotating+Axial Corr) (Rockies 0.03Gt model)		AG 32C-31-L PWB
1800.00	18686.00	Custom BHI AutoTrak Curve (Short) (Rockies 0.03Gt model)		AG 32C-31-L PWB



# Planned Wellpath Report

AG 32C-31-L REV-B.0 PWP

Page 10 of 10



## REFERENCE WELLPATH IDENTIFICATION

Operator	SYNERGY RESOURCES CORPORATION	Slot	SLOT#11 AG 32C-31-L (1022'FNL & 585'FEL SEC 32)
Area	COLORADO	Well	AG 32C-31-L
Field	WELD COUNTY (NAD83,TRUE NORTH)	Wellbore	AG 32C-31-L PWB
Facility	SEC.32-T06N-R66W		

## WELLPATH COMMENTS

MD [ft]	Inclination [°]	Azimuth [°]	TVD [ft]	Comment
6945.17	27.821	245.949	6723.00	SHARON SPRINGS
6986.55	31.249	248.905	6759.00	NIO-A
7141.33	44.457	256.222	6881.00	NIO-B
7251.77	54.069	259.576	6953.00	NIO-C
7455.18	71.938	264.075	7045.00	FORT HAYS
7545.76	79.928	265.743	7067.00	CODELL