

SYNERGY RESOURCES CORPORATION

Location: COLORADO	Slot: SLOT#08 AG 31N-31B-L (979FNL & 545FEL SEC 32)
Field: WELD COUNTY (NAD83,TRUE NORTH)	Well: AG 31N-31B-L
Facility: SEC.32-T06N-R66W	Wellbore: AG 31N-31B-L PWB
Plot reference wellpath is AG 31N-31B-L REV-B.0 PWP	
True vertical depths are referenced to PRECISION 462 (20) (RKB)	* = Wellpath was transformed from a different geoidetic datum
Measured depths are referenced to PRECISION 462 (20) (RKB)	North Reference: True north
PRECISION 462 (20) (RKB) to Mean Sea Level: 4724 feet	Scale: True distance
Mean Sea Level to Mud line (At Slot: SLOT#08 AG 31N-31B-L (979FNL & 545FEL SEC 32)); 0 feet	Depths are in feet
Coordinates are in feet referenced to Slot	Created by: wagnjam on 2016-09-26
	Database: WA_DEN_Denver_Defn

Location Information				
Facility Name		Grid East (US ft)	Grid North (US ft)	Latitude
SEC.32-T06N-R66W		3196477.049	1407381.484	40°26'58.261"N
Slot	Local N (ft)	Local E (ft)	Grid East (US ft)	Grid North (US ft)
SLOT#08 AG 31N-31B-L (979FNL & 545FEL SEC 32)	-102.31	-95.17	3196382.701	1407278.422
PRECISION 462 (20) (RKB) to Mud line (At Slot: SLOT#08 AG 31N-31B-L (979FNL & 545FEL SEC 32))				4724ft
Mean Sea Level to Mud line (At Slot: SLOT#08 AG 31N-31B-L (979FNL & 545FEL SEC 32))				0ft
PRECISION 462 (20) (RKB) to Mean Sea Level				4724ft

Wellpath Comments						
MD (ft)	X (ft)	Y (ft)	TVD (ft)	Inclination (°)	Azimuth (°)	VS (ft)
6890.66	926.28	-597.54	6711.00	44.360	261.628	-861.02
6943.17	888.45	-602.78	6747.00	49.037	262.552	-822.85
7188.63	678.24	-623.81	6869.00	70.967	265.673	-611.60
						Comment
						SHARON SPRINGS
						NIO A
						NIO B

Well Profile Data

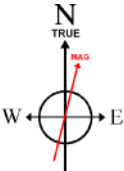
Design Comment	MD (ft)	Inc (°)	Az (°)	TVD (ft)	Local N (ft)	Local E (ft)	DLS (°/100ft)	VS (ft)
Tie On	20.00	0.000	116.020	20.00	0.00	0.00	0.00	0.00
End of Tangent	300.00	0.000	116.020	300.00	0.00	0.00	0.00	0.00
End of Build	918.15	12.363	116.020	913.36	-29.14	59.70	2.00	-56.44
End of Tangent	6280.55	12.363	116.020	6151.41	-532.80	1091.44	0.00	-1031.88
End of 3D Arc	7401.29	90.000	267.727	6904.00	-635.73	469.83	9.00	-403.05
End of Tangent	18421.58	90.000	267.727	6904.00	-1072.88	-10541.79	0.00	10596.25

Targets

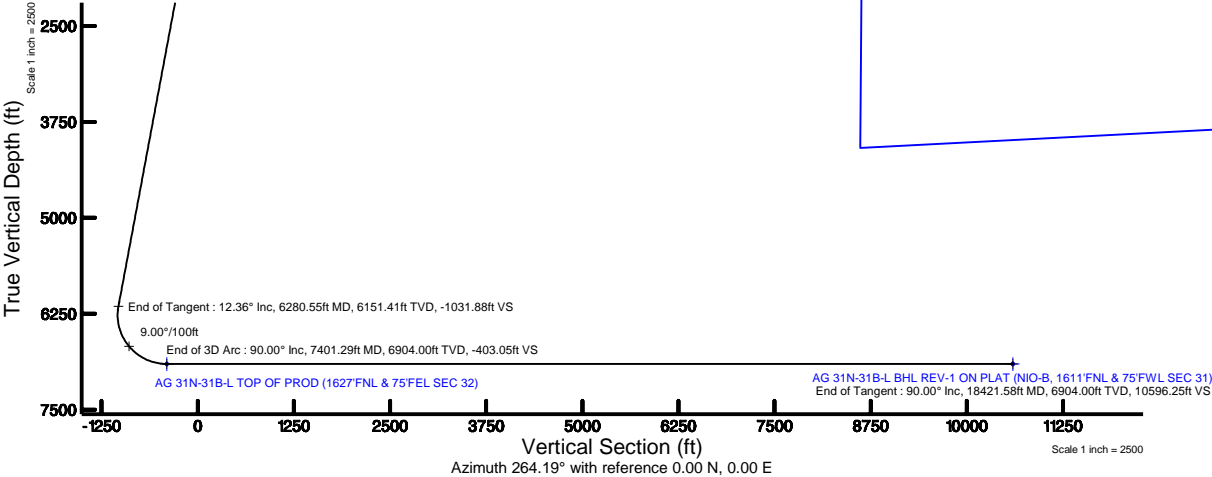
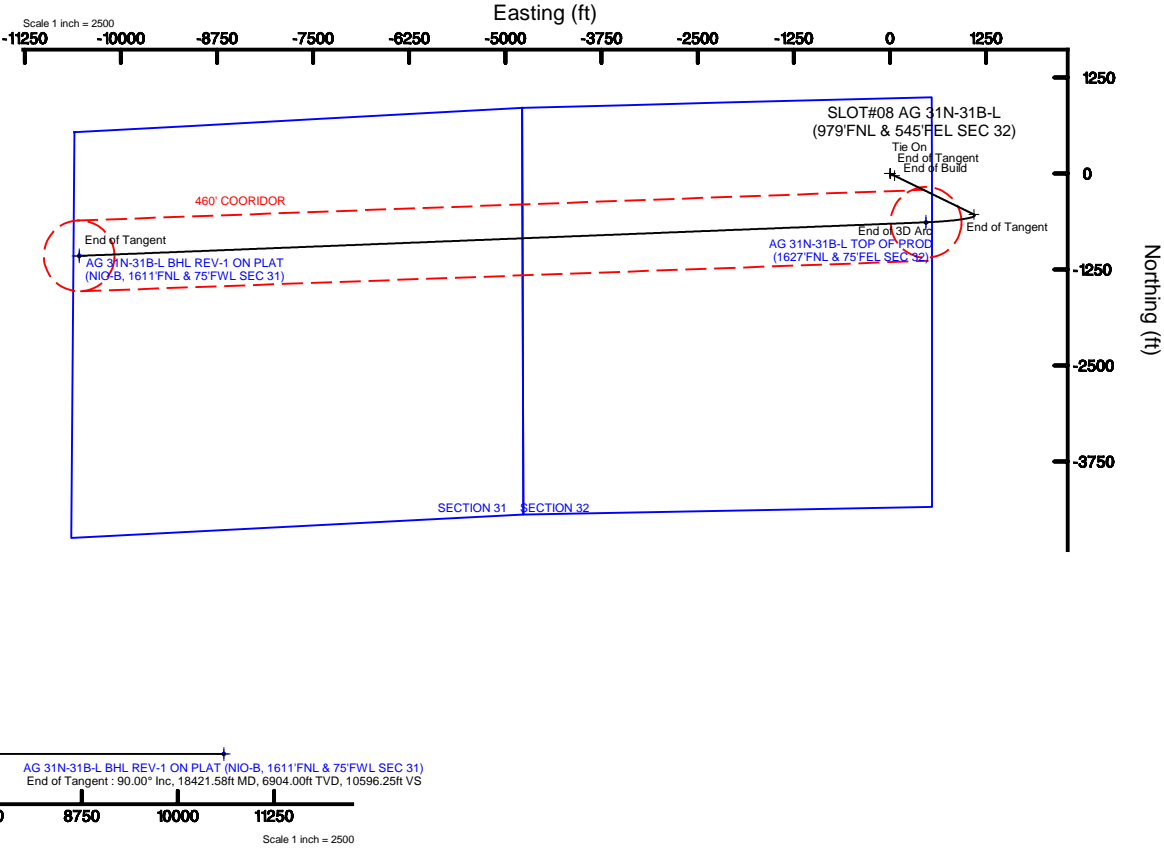
Name	MD (ft)	TVD (ft)	Local N (ft)	Local E (ft)	Grid East (US ft)	Grid North (US ft)	Latitude	Longitude
SEC.31-T06N-R66W		-20.00	102.31	95.17	3196477.05	1407381.48	40°26'58.261"N	104°47'38.472"W
SEC.32-T06N-R66W		-20.00	102.31	95.17	3196477.05	1407381.48	40°26'58.261"N	104°47'38.472"W
AG 31N-31B-L BHL REV-1 ON PLAT (NIO-B, 1611FNL & 75FWL SEC 31)	18421.58	6904.00	-1072.88	-10541.79	3185850.19	1406121.73	40°26'46.626"N	104°49'56.053"W
AG 31N-31B-L TOP OF PROD (1627FNL & 75FEL SEC 32)	7401.29	6904.00	-635.73	-469.83	3196857.56	1405646.48	40°26'50.988"N	104°47'33.626"W

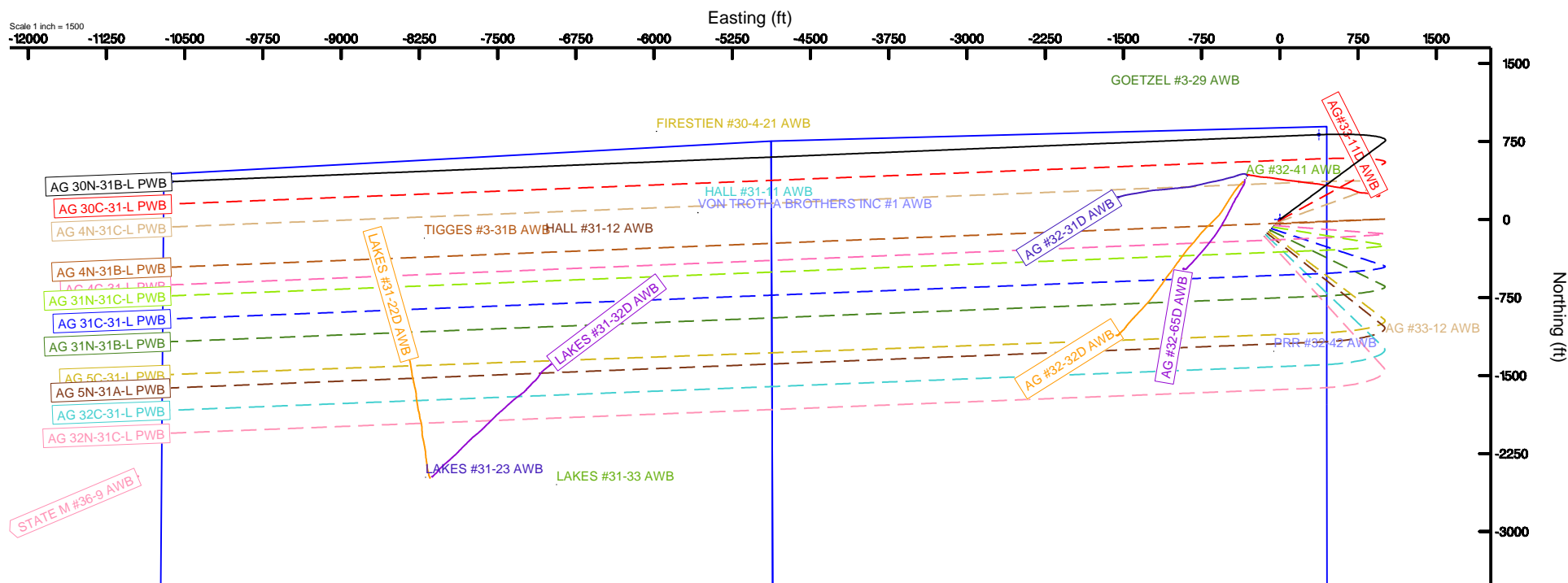
Tie-On Position

MD (ft)	Inc (°)	Az (°)	TVD (ft)	Local N (ft)	Local E (ft)	Grid East (US ft)	Grid North (US ft)	Latitude	Longitude
20.00	0.000	116.020	20.00	0.00	0.00	3196382.70	1407278.42	40°26'57.250"N	104°47'39.703"W



BGGM (1900.0 to 2018.0) Dip: 66.93° Field: 52538.1 nT
Magnetic North is 8.47 degrees East of True North (at 9/21/2016)
To correct azimuth from Magnetic to True add 8.47 degrees





AG_31N-31B-L_REV-B.0_PWP.las

~VERSION INFORMATION

VERS. 2.0 : CWLS LOG ASCII STANDARD-VERSION 2.0
WRAP. NO : ASCII DATA SECTION CONTAINS ONE ROW PER WELLPATH STATION

~WELL INFORMATION

#MNEM	.UNITS	DATA	:DESCRIPTION
#----	.-----	----	:-----
STRT	.ft	0.00	:START MD
STOP	.ft	18421.58	:STOP MD
STEP	.ft	0.0	:STEP (non-uniform increment)
NULL	.	-999.99	:NULL
COMP	.	SYNERGY RESOURCES CORPORATION	:OPERATOR
WELL	.	AG 31N-31B-L	:WELL
FLD	.	WELD COUNTY (NAD83,TRUE NORTH)	:FIELD
LOC	.	COLORADO	:AREA (aka: Location)
CNTY	.	N/A	:COUNTY
STAT	.	N/A	:STATE
CTRY	.	N/A	:COUNTRY
SRVC	.	Baker Hughes	:CONTRACTOR
DATE	.	09/21/2016	:LOG REV DATE
API	.		:API NUMBER

~OTHER INFORMATION

#Software: WellArchitect(R) Version 5.0

#MNEM	.UNITS	DATA	:DESCRIPTION
#----	.-----	----	:-----
WPTYPE	.	PLANNED WELLPATH	:WELLPATH TYPE
FACILITY	.	SEC.32-T06N-R66W	:FACILITY
SLOT	.	SLOT#08 AG 31N-31B-L (979'FNL & 545'FEL SEC 32)	:SLOT
WELLBORE	.	AG 31N-31B-L PWB	:WELLBORE
WELLPATH	.	AG 31N-31B-L REV-B.0 PWP	:WELLPATH
MDREFPT	.	PRECISION 462 (20') (RKB)	:MD REFERENCE POINT
TVDREFPT	.	PRECISION 462 (20') (RKB)	:TVD REFERENCE POINT
LCLREFPT	.	SLOT	:LOCAL COORDINATE REFERENCE PT
VSAZIMUTH	.deg	264.19	:VERTICAL SECTION AZIMUTH
VSORIGN	.ft	0.00	:VERTICAL SECTION ORIGIN NORTH
VSORIGE	.ft	0.00	:VERTICAL SECTION ORIGIN EAST

~CURVE (WELLPATH) INFORMATION

#MNEM	.UNITS	:DESCRIPTION
#----	.-----	:-----
DEPT	.ft	:MEASURED DEPTH
INC	.deg	:INCLINATION
AZI	.deg	:AZIMUTH
TVD	.ft	:TRUE VERTICAL DEPTH
SECT	.ft	:CROSS SECTION (CURTAIN/VERTICAL)
LOCALN	.ft	:LOCAL NORTH
LOCALE	.ft	:LOCAL EAST

AG_31N-31B-L-REV-B.0_PWP.1as

LAT .deg :LATITUDE
 LONG .deg :LONGITUDE
 DLS .deg/100ft :DOGLEG SEVERITY

~ASCII DATA

0.00	0.00	116.02	0.00	0.00	0.00	0.00	40.4492361	-104.7943619	0.00
20.00	0.00	116.02	20.00	0.00	0.00	0.00	40.4492361	-104.7943619	0.00
120.00	0.00	116.02	120.00	0.00	0.00	0.00	40.4492361	-104.7943619	0.00
220.00	0.00	116.02	220.00	0.00	0.00	0.00	40.4492361	-104.7943619	0.00
300.00	0.00	116.02	300.00	0.00	0.00	0.00	40.4492361	-104.7943619	0.00
320.00	0.40	116.02	320.00	-0.06	-0.03	0.06	40.4492360	-104.7943617	2.00
420.00	2.40	116.02	419.96	-2.13	-1.10	2.26	40.4492331	-104.7943538	2.00
520.00	4.40	116.02	519.78	-7.17	-3.70	7.59	40.4492259	-104.7943347	2.00
620.00	6.40	116.02	619.33	-15.17	-7.83	16.04	40.4492146	-104.7943043	2.00
720.00	8.40	116.02	718.50	-26.11	-13.48	27.62	40.4491991	-104.7942627	2.00
820.00	10.40	116.02	817.15	-39.99	-20.65	42.29	40.4491794	-104.7942100	2.00
918.15	12.36	116.02	913.36	-56.44	-29.14	59.70	40.4491561	-104.7941474	2.00
920.00	12.36	116.02	915.17	-56.78	-29.32	60.05	40.4491556	-104.7941462	0.00
1020.00	12.36	116.02	1012.85	-74.97	-38.71	79.30	40.4491299	-104.7940770	0.00
1120.00	12.36	116.02	1110.53	-93.16	-48.10	98.54	40.4491041	-104.7940079	0.00
1220.00	12.36	116.02	1208.21	-111.35	-57.49	117.78	40.4490783	-104.7939388	0.00
1320.00	12.36	116.02	1305.90	-129.54	-66.89	137.02	40.4490525	-104.7938696	0.00
1420.00	12.36	116.02	1403.58	-147.73	-76.28	156.26	40.4490267	-104.7938005	0.00
1520.00	12.36	116.02	1501.26	-165.92	-85.67	175.50	40.4490010	-104.7937314	0.00
1620.00	12.36	116.02	1598.94	-184.11	-95.06	194.74	40.4489752	-104.7936623	0.00
1720.00	12.36	116.02	1696.62	-202.30	-104.46	213.98	40.4489494	-104.7935931	0.00
1820.00	12.36	116.02	1794.30	-220.49	-113.85	233.22	40.4489236	-104.7935240	0.00
1920.00	12.36	116.02	1891.98	-238.68	-123.24	252.46	40.4488978	-104.7934549	0.00
2020.00	12.36	116.02	1989.66	-256.87	-132.63	271.70	40.4488720	-104.7933857	0.00
2120.00	12.36	116.02	2087.34	-275.06	-142.02	290.94	40.4488463	-104.7933166	0.00
2220.00	12.36	116.02	2185.03	-293.25	-151.42	310.18	40.4488205	-104.7932475	0.00
2320.00	12.36	116.02	2282.71	-311.44	-160.81	329.42	40.4487947	-104.7931783	0.00
2420.00	12.36	116.02	2380.39	-329.63	-170.20	348.66	40.4487689	-104.7931092	0.00
2520.00	12.36	116.02	2478.07	-347.82	-179.59	367.90	40.4487431	-104.7930401	0.00
2620.00	12.36	116.02	2575.75	-366.02	-188.99	387.14	40.4487174	-104.7929710	0.00
2720.00	12.36	116.02	2673.43	-384.21	-198.38	406.38	40.4486916	-104.7929018	0.00
2820.00	12.36	116.02	2771.11	-402.40	-207.77	425.62	40.4486658	-104.7928327	0.00
2920.00	12.36	116.02	2868.79	-420.59	-217.16	444.86	40.4486400	-104.7927636	0.00
3020.00	12.36	116.02	2966.47	-438.78	-226.56	464.10	40.4486142	-104.7926944	0.00
3120.00	12.36	116.02	3064.16	-456.97	-235.95	483.34	40.4485884	-104.7926253	0.00
3220.00	12.36	116.02	3161.84	-475.16	-245.34	502.58	40.4485627	-104.7925562	0.00
3320.00	12.36	116.02	3259.52	-493.35	-254.73	521.82	40.4485369	-104.7924871	0.00
3420.00	12.36	116.02	3357.20	-511.54	-264.13	541.06	40.4485111	-104.7924179	0.00
3520.00	12.36	116.02	3454.88	-529.73	-273.52	560.30	40.4484853	-104.7923488	0.00
3620.00	12.36	116.02	3552.56	-547.92	-282.91	579.54	40.4484595	-104.7922797	0.00
3720.00	12.36	116.02	3650.24	-566.11	-292.30	598.78	40.4484338	-104.7922105	0.00
3820.00	12.36	116.02	3747.92	-584.30	-301.70	618.02	40.4484080	-104.7921414	0.00
3920.00	12.36	116.02	3845.60	-602.49	-311.09	637.26	40.4483822	-104.7920723	0.00

AG_31N-31B-L_REV-B.0_PWP.las

4020.00	12.36	116.02	3943.29	-620.68	-320.48	656.50	40.4483564	-104.7920032	0.00
4120.00	12.36	116.02	4040.97	-638.87	-329.87	675.74	40.4483306	-104.7919340	0.00
4220.00	12.36	116.02	4138.65	-657.06	-339.26	694.98	40.4483048	-104.7918649	0.00
4320.00	12.36	116.02	4236.33	-675.25	-348.66	714.23	40.4482791	-104.7917958	0.00
4420.00	12.36	116.02	4334.01	-693.44	-358.05	733.47	40.4482533	-104.7917266	0.00
4520.00	12.36	116.02	4431.69	-711.63	-367.44	752.71	40.4482275	-104.7916575	0.00
4620.00	12.36	116.02	4529.37	-729.82	-376.83	771.95	40.4482017	-104.7915884	0.00
4720.00	12.36	116.02	4627.05	-748.01	-386.23	791.19	40.4481759	-104.7915193	0.00
4820.00	12.36	116.02	4724.73	-766.20	-395.62	810.43	40.4481501	-104.7914501	0.00
4920.00	12.36	116.02	4822.41	-784.40	-405.01	829.67	40.4481244	-104.7913810	0.00
5020.00	12.36	116.02	4920.10	-802.59	-414.40	848.91	40.4480986	-104.7913119	0.00
5120.00	12.36	116.02	5017.78	-820.78	-423.80	868.15	40.4480728	-104.7912427	0.00
5220.00	12.36	116.02	5115.46	-838.97	-433.19	887.39	40.4480470	-104.7911736	0.00
5320.00	12.36	116.02	5213.14	-857.16	-442.58	906.63	40.4480212	-104.7911045	0.00
5420.00	12.36	116.02	5310.82	-875.35	-451.97	925.87	40.4479955	-104.7910354	0.00
5520.00	12.36	116.02	5408.50	-893.54	-461.37	945.11	40.4479697	-104.7909662	0.00
5620.00	12.36	116.02	5506.18	-911.73	-470.76	964.35	40.4479439	-104.7908971	0.00
5720.00	12.36	116.02	5603.86	-929.92	-480.15	983.59	40.4479181	-104.7908280	0.00
5820.00	12.36	116.02	5701.54	-948.11	-489.54	1002.83	40.4478923	-104.7907588	0.00
5920.00	12.36	116.02	5799.23	-966.30	-498.93	1022.07	40.4478665	-104.7906897	0.00
6020.00	12.36	116.02	5896.91	-984.49	-508.33	1041.31	40.4478408	-104.7906206	0.00
6120.00	12.36	116.02	5994.59	-1002.68	-517.72	1060.55	40.4478150	-104.7905515	0.00
6220.00	12.36	116.02	6092.27	-1020.87	-527.11	1079.79	40.4477892	-104.7904823	0.00
6280.55	12.36	116.02	6151.41	-1031.88	-532.80	1091.44	40.4477736	-104.7904405	0.00
6320.00	9.41	126.56	6190.15	-1037.86	-536.57	1097.83	40.4477632	-104.7904175	9.00
6420.00	6.17	193.61	6289.40	-1042.12	-546.68	1103.14	40.4477355	-104.7903984	9.00
6520.00	12.20	239.02	6388.18	-1030.75	-557.36	1092.80	40.4477062	-104.7904356	9.00
6620.00	20.52	251.62	6484.07	-1004.02	-568.36	1067.05	40.4476760	-104.7905281	9.00
6720.00	29.24	257.03	6574.72	-962.59	-579.39	1026.53	40.4476457	-104.7906737	9.00
6820.00	38.08	260.11	6657.87	-907.48	-590.19	972.24	40.4476161	-104.7908688	9.00
6920.00	46.97	262.16	6731.50	-840.06	-600.49	905.51	40.4475878	-104.7911085	9.00
7020.00	55.89	263.69	6793.78	-761.97	-610.05	827.99	40.4475616	-104.7913870	9.00
7120.00	64.83	264.93	6843.19	-675.14	-618.61	741.59	40.4475381	-104.7916975	9.00
7220.00	73.77	265.99	6878.50	-581.72	-625.98	648.43	40.4475178	-104.7920322	9.00
7320.00	82.72	266.97	6898.85	-483.99	-631.97	550.81	40.4475014	-104.7923829	9.00
7401.29	90.00	267.73	6904.00	-403.05	-635.73	469.83	40.4474911	-104.7926739	9.00
7420.00	90.00	267.73	6904.00	-384.37	-636.47	451.13	40.4474891	-104.7927411	0.00
7520.00	90.00	267.73	6904.00	-284.56	-640.43	351.21	40.4474782	-104.7931001	0.00
7620.00	90.00	267.73	6904.00	-184.75	-644.40	251.29	40.4474673	-104.7934591	0.00
7720.00	90.00	267.73	6904.00	-84.94	-648.37	151.37	40.4474564	-104.7938181	0.00
7820.00	90.00	267.73	6904.00	14.87	-652.34	51.45	40.4474455	-104.7941771	0.00
7920.00	90.00	267.73	6904.00	114.68	-656.30	-48.47	40.4474346	-104.7945361	0.00
8020.00	90.00	267.73	6904.00	214.48	-660.27	-148.39	40.4474238	-104.7948951	0.00
8120.00	90.00	267.73	6904.00	314.29	-664.24	-248.32	40.4474129	-104.7952541	0.00
8220.00	90.00	267.73	6904.00	414.10	-668.20	-348.24	40.4474020	-104.7956131	0.00
8320.00	90.00	267.73	6904.00	513.91	-672.17	-448.16	40.4473911	-104.7959721	0.00
8420.00	90.00	267.73	6904.00	613.72	-676.14	-548.08	40.4473802	-104.7963311	0.00
8520.00	90.00	267.73	6904.00	713.53	-680.10	-648.00	40.4473693	-104.7966901	0.00

AG_31N-31B-L_REV-B.0_PWP.las

8620.00	90.00	267.73	6904.00	813.34	-684.07	-747.92	40.4473584	-104.7970492	0.00
8720.00	90.00	267.73	6904.00	913.15	-688.04	-847.84	40.4473475	-104.7974082	0.00
8820.00	90.00	267.73	6904.00	1012.96	-692.00	-947.76	40.4473366	-104.7977672	0.00
8920.00	90.00	267.73	6904.00	1112.77	-695.97	-1047.69	40.4473257	-104.7981262	0.00
9020.00	90.00	267.73	6904.00	1212.58	-699.94	-1147.61	40.4473148	-104.7984852	0.00
9120.00	90.00	267.73	6904.00	1312.39	-703.90	-1247.53	40.4473039	-104.7988442	0.00
9220.00	90.00	267.73	6904.00	1412.20	-707.87	-1347.45	40.4472930	-104.7992032	0.00
9320.00	90.00	267.73	6904.00	1512.01	-711.84	-1447.37	40.4472821	-104.7995622	0.00
9420.00	90.00	267.73	6904.00	1611.82	-715.80	-1547.29	40.4472712	-104.7999212	0.00
9520.00	90.00	267.73	6904.00	1711.63	-719.77	-1647.21	40.4472603	-104.8002802	0.00
9620.00	90.00	267.73	6904.00	1811.44	-723.74	-1747.14	40.4472494	-104.8006392	0.00
9720.00	90.00	267.73	6904.00	1911.25	-727.71	-1847.06	40.4472385	-104.8009982	0.00
9820.00	90.00	267.73	6904.00	2011.05	-731.67	-1946.98	40.4472276	-104.8013572	0.00
9920.00	90.00	267.73	6904.00	2110.86	-735.64	-2046.90	40.4472166	-104.8017162	0.00
10020.00	90.00	267.73	6904.00	2210.67	-739.61	-2146.82	40.4472057	-104.8020752	0.00
10120.00	90.00	267.73	6904.00	2310.48	-743.57	-2246.74	40.4471948	-104.8024342	0.00
10220.00	90.00	267.73	6904.00	2410.29	-747.54	-2346.66	40.4471839	-104.8027932	0.00
10320.00	90.00	267.73	6904.00	2510.10	-751.51	-2446.58	40.4471730	-104.8031523	0.00
10420.00	90.00	267.73	6904.00	2609.91	-755.47	-2546.51	40.4471621	-104.8035113	0.00
10520.00	90.00	267.73	6904.00	2709.72	-759.44	-2646.43	40.4471512	-104.8038703	0.00
10620.00	90.00	267.73	6904.00	2809.53	-763.41	-2746.35	40.4471402	-104.8042293	0.00
10720.00	90.00	267.73	6904.00	2909.34	-767.37	-2846.27	40.4471293	-104.8045883	0.00
10820.00	90.00	267.73	6904.00	3009.15	-771.34	-2946.19	40.4471184	-104.8049473	0.00
10920.00	90.00	267.73	6904.00	3108.96	-775.31	-3046.11	40.4471075	-104.8053063	0.00
11020.00	90.00	267.73	6904.00	3208.77	-779.27	-3146.03	40.4470965	-104.8056653	0.00
11120.00	90.00	267.73	6904.00	3308.58	-783.24	-3245.95	40.4470856	-104.8060243	0.00
11220.00	90.00	267.73	6904.00	3408.39	-787.21	-3345.88	40.4470747	-104.8063833	0.00
11320.00	90.00	267.73	6904.00	3508.20	-791.17	-3445.80	40.4470638	-104.8067423	0.00
11420.00	90.00	267.73	6904.00	3608.01	-795.14	-3545.72	40.4470528	-104.8071013	0.00
11520.00	90.00	267.73	6904.00	3707.82	-799.11	-3645.64	40.4470419	-104.8074603	0.00
11620.00	90.00	267.73	6904.00	3807.62	-803.08	-3745.56	40.4470310	-104.8078193	0.00
11720.00	90.00	267.73	6904.00	3907.43	-807.04	-3845.48	40.4470201	-104.8081783	0.00
11820.00	90.00	267.73	6904.00	4007.24	-811.01	-3945.40	40.4470091	-104.8085373	0.00
11920.00	90.00	267.73	6904.00	4107.05	-814.98	-4045.32	40.4469982	-104.8088963	0.00
12020.00	90.00	267.73	6904.00	4206.86	-818.94	-4145.25	40.4469873	-104.8092553	0.00
12120.00	90.00	267.73	6904.00	4306.67	-822.91	-4245.17	40.4469763	-104.8096143	0.00
12220.00	90.00	267.73	6904.00	4406.48	-826.88	-4345.09	40.4469654	-104.8099733	0.00
12320.00	90.00	267.73	6904.00	4506.29	-830.84	-4445.01	40.4469545	-104.8103323	0.00
12420.00	90.00	267.73	6904.00	4606.10	-834.81	-4544.93	40.4469435	-104.8106913	0.00
12520.00	90.00	267.73	6904.00	4705.91	-838.78	-4644.85	40.4469326	-104.8110503	0.00
12620.00	90.00	267.73	6904.00	4805.72	-842.74	-4744.77	40.4469216	-104.8114093	0.00
12720.00	90.00	267.73	6904.00	4905.53	-846.71	-4844.70	40.4469107	-104.8117683	0.00
12820.00	90.00	267.73	6904.00	5005.34	-850.68	-4944.62	40.4468997	-104.8121273	0.00
12920.00	90.00	267.73	6904.00	5105.15	-854.64	-5044.54	40.4468888	-104.8124863	0.00
13020.00	90.00	267.73	6904.00	5204.96	-858.61	-5144.46	40.4468779	-104.8128453	0.00
13120.00	90.00	267.73	6904.00	5304.77	-862.58	-5244.38	40.4468669	-104.8132043	0.00
13220.00	90.00	267.73	6904.00	5404.58	-866.54	-5344.30	40.4468560	-104.8135633	0.00
13320.00	90.00	267.73	6904.00	5504.38	-870.51	-5444.22	40.4468450	-104.8139223	0.00

AG_31N-31B-L_REV-B.0_PWP.las

13420.00	90.00	267.73	6904.00	5604.19	-874.48	-5544.14	40.4468341	-104.8142813	0.00
13520.00	90.00	267.73	6904.00	5704.00	-878.44	-5644.07	40.4468231	-104.8146403	0.00
13620.00	90.00	267.73	6904.00	5803.81	-882.41	-5743.99	40.4468122	-104.8149993	0.00
13720.00	90.00	267.73	6904.00	5903.62	-886.38	-5843.91	40.4468012	-104.8153583	0.00
13820.00	90.00	267.73	6904.00	6003.43	-890.35	-5943.83	40.4467903	-104.8157174	0.00
13920.00	90.00	267.73	6904.00	6103.24	-894.31	-6043.75	40.4467793	-104.8160764	0.00
14020.00	90.00	267.73	6904.00	6203.05	-898.28	-6143.67	40.4467683	-104.8164354	0.00
14120.00	90.00	267.73	6904.00	6302.86	-902.25	-6243.59	40.4467574	-104.8167944	0.00
14220.00	90.00	267.73	6904.00	6402.67	-906.21	-6343.51	40.4467464	-104.8171534	0.00
14320.00	90.00	267.73	6904.00	6502.48	-910.18	-6443.44	40.4467355	-104.8175124	0.00
14420.00	90.00	267.73	6904.00	6602.29	-914.15	-6543.36	40.4467245	-104.8178714	0.00
14520.00	90.00	267.73	6904.00	6702.10	-918.11	-6643.28	40.4467135	-104.8182304	0.00
14620.00	90.00	267.73	6904.00	6801.91	-922.08	-6743.20	40.4467026	-104.8185894	0.00
14720.00	90.00	267.73	6904.00	6901.72	-926.05	-6843.12	40.4466916	-104.8189484	0.00
14820.00	90.00	267.73	6904.00	7001.53	-930.01	-6943.04	40.4466807	-104.8193074	0.00
14920.00	90.00	267.73	6904.00	7101.34	-933.98	-7042.96	40.4466697	-104.8196664	0.00
15020.00	90.00	267.73	6904.00	7201.15	-937.95	-7142.88	40.4466587	-104.8200254	0.00
15120.00	90.00	267.73	6904.00	7300.95	-941.91	-7242.81	40.4466478	-104.8203844	0.00
15220.00	90.00	267.73	6904.00	7400.76	-945.88	-7342.73	40.4466368	-104.8207433	0.00
15320.00	90.00	267.73	6904.00	7500.57	-949.85	-7442.65	40.4466258	-104.8211023	0.00
15420.00	90.00	267.73	6904.00	7600.38	-953.81	-7542.57	40.4466148	-104.8214613	0.00
15520.00	90.00	267.73	6904.00	7700.19	-957.78	-7642.49	40.4466039	-104.8218203	0.00
15620.00	90.00	267.73	6904.00	7800.00	-961.75	-7742.41	40.4465929	-104.8221793	0.00
15720.00	90.00	267.73	6904.00	7899.81	-965.72	-7842.33	40.4465819	-104.8225383	0.00
15820.00	90.00	267.73	6904.00	7999.62	-969.68	-7942.26	40.4465709	-104.8228973	0.00
15920.00	90.00	267.73	6904.00	8099.43	-973.65	-8042.18	40.4465600	-104.8232563	0.00
16020.00	90.00	267.73	6904.00	8199.24	-977.62	-8142.10	40.4465490	-104.8236153	0.00
16120.00	90.00	267.73	6904.00	8299.05	-981.58	-8242.02	40.4465380	-104.8239743	0.00
16220.00	90.00	267.73	6904.00	8398.86	-985.55	-8341.94	40.4465270	-104.8243333	0.00
16320.00	90.00	267.73	6904.00	8498.67	-989.52	-8441.86	40.4465160	-104.8246923	0.00
16420.00	90.00	267.73	6904.00	8598.48	-993.48	-8541.78	40.4465051	-104.8250513	0.00
16520.00	90.00	267.73	6904.00	8698.29	-997.45	-8641.70	40.4464941	-104.8254103	0.00
16620.00	90.00	267.73	6904.00	8798.10	-1001.42	-8741.63	40.4464831	-104.8257693	0.00
16720.00	90.00	267.73	6904.00	8897.91	-1005.38	-8841.55	40.4464721	-104.8261283	0.00
16820.00	90.00	267.73	6904.00	8997.71	-1009.35	-8941.47	40.4464611	-104.8264873	0.00
16920.00	90.00	267.73	6904.00	9097.52	-1013.32	-9041.39	40.4464501	-104.8268463	0.00
17020.00	90.00	267.73	6904.00	9197.33	-1017.28	-9141.31	40.4464391	-104.8272053	0.00
17120.00	90.00	267.73	6904.00	9297.14	-1021.25	-9241.23	40.4464282	-104.8275643	0.00
17220.00	90.00	267.73	6904.00	9396.95	-1025.22	-9341.15	40.4464172	-104.8279233	0.00
17320.00	90.00	267.73	6904.00	9496.76	-1029.18	-9441.07	40.4464062	-104.8282823	0.00
17420.00	90.00	267.73	6904.00	9596.57	-1033.15	-9541.00	40.4463952	-104.8286413	0.00
17520.00	90.00	267.73	6904.00	9696.38	-1037.12	-9640.92	40.4463842	-104.8290003	0.00
17620.00	90.00	267.73	6904.00	9796.19	-1041.09	-9740.84	40.4463732	-104.8293593	0.00
17720.00	90.00	267.73	6904.00	9896.00	-1045.05	-9840.76	40.4463622	-104.8297183	0.00
17820.00	90.00	267.73	6904.00	9995.81	-1049.02	-9940.68	40.4463512	-104.8300773	0.00
17920.00	90.00	267.73	6904.00	10095.62	-1052.99	-10040.60	40.4463402	-104.8304363	0.00
18020.00	90.00	267.73	6904.00	10195.43	-1056.95	-10140.52	40.4463292	-104.8307953	0.00
18120.00	90.00	267.73	6904.00	10295.24	-1060.92	-10240.44	40.4463182	-104.8311543	0.00

AG_31N-31B-L_REV-B.0_PWP.las

18220.00	90.00	267.73	6904.00	10395.05	-1064.89	-10340.37	40.4463072	-104.8315133	0.00
18320.00	90.00	267.73	6904.00	10494.86	-1068.85	-10440.29	40.4462962	-104.8318723	0.00
18420.00	90.00	267.73	6904.00	10594.67	-1072.82	-10540.21	40.4462852	-104.8322313	0.00
18421.58	90.00	267.73	6904.00	10596.25	-1072.88	-10541.79	40.4462850	-104.8322369	0.00



Planned Wellpath Report

AG 31N-31B-L REV-B.0 PWP

Page 1 of 10



REFERENCE WELLPATH IDENTIFICATION

Operator	SYNERGY RESOURCES CORPORATION	Slot	SLOT#08 AG 31N-31B-L (979'FNL & 545'FEL SEC 32)
Area	COLORADO	Well	AG 31N-31B-L
Field	WELD COUNTY (NAD83,TRUE NORTH)	Wellbore	AG 31N-31B-L PWB
Facility	SEC.32-T06N-R66W		

REPORT SETUP INFORMATION

Projection System	NAD83 / Lambert Colorado SP, Northern Zone (501), US feet	Software System	WellArchitect® 5.0
North Reference	True	User	Wagnjam
Scale	0.999963	Report Generated	9/27/2016 at 10:45:00 AM
Convergence at slot	0.46° East	Database/Source file	WA_DEN_Denver_Defn/AG_31N-31B-L_REV-B.0_PWP.xml

WELLPATH LOCATION

	Local coordinates		Grid coordinates		Geographic coordinates	
	North[ft]	East[ft]	Easting[US ft]	Northing[US ft]	Latitude	Longitude
Slot Location	-102.31	-95.17	3196382.70	1407278.42	40°26'57.250"N	104°47'39.703"W
Facility Reference Pt			3196477.05	1407381.48	40°26'58.261"N	104°47'38.472"W
Field Reference Pt			3171284.48	1426358.81	40°30'07.643"N	104°53'02.634"W

WELLPATH DATUM

Calculation method	Minimum curvature	PRECISION 462 (20') (RKB) to Facility Vertical Datum	4724.00ft
Horizontal Reference Pt	Slot	PRECISION 462 (20') (RKB) to Mean Sea Level	4724.00ft
Vertical Reference Pt	PRECISION 462 (20') (RKB)	PRECISION 462 (20') (RKB) to Mud Line at Slot (SLOT#08 AG 31N-31B-L (979'FNL & 545'FEL SEC 32))	4724.00ft
MD Reference Pt	PRECISION 462 (20') (RKB)	Section Origin	N 0.00, E 0.00 ft
Field Vertical Reference	Mean Sea Level	Section Azimuth	264.19°



Planned Wellpath Report

AG 31N-31B-L REV-B.0 PWP

Page 2 of 10



REFERENCE WELLPATH IDENTIFICATION

Operator	SYNERGY RESOURCES CORPORATION	Slot	SLOT#08 AG 31N-31B-L (979'FNL & 545'FEL SEC 32)
Area	COLORADO	Well	AG 31N-31B-L
Field	WELD COUNTY (NAD83,TRUE NORTH)	Wellbore	AG 31N-31B-L PWB
Facility	SEC.32-T06N-R66W		

WELLPATH DATA (194 stations) † = interpolated/extrapolated station

MD [ft]	Inclination [°]	Azimuth [°]	TVD [ft]	Vert Sect [ft]	North [ft]	East [ft]	DLS [°/100ft]	Comments
0.00†	0.000	116.020	0.00	0.00	0.00	0.00	0.00	
20.00	0.000	116.020	20.00	0.00	0.00	0.00	0.00	Tie On
120.00†	0.000	116.020	120.00	0.00	0.00	0.00	0.00	
220.00†	0.000	116.020	220.00	0.00	0.00	0.00	0.00	
300.00	0.000	116.020	300.00	0.00	0.00	0.00	0.00	End of Tangent
320.00†	0.400	116.020	320.00	-0.06	-0.03	0.06	2.00	
420.00†	2.400	116.020	419.96	-2.13	-1.10	2.26	2.00	
520.00†	4.400	116.020	519.78	-7.17	-3.70	7.59	2.00	
620.00†	6.400	116.020	619.33	-15.17	-7.83	16.04	2.00	
720.00†	8.400	116.020	718.50	-26.11	-13.48	27.62	2.00	
820.00†	10.400	116.020	817.15	-39.99	-20.65	42.29	2.00	
918.15	12.363	116.020	913.36	-56.44	-29.14	59.70	2.00	End of Build
920.00†	12.363	116.020	915.17	-56.78	-29.32	60.05	0.00	
1020.00†	12.363	116.020	1012.85	-74.97	-38.71	79.30	0.00	
1120.00†	12.363	116.020	1110.53	-93.16	-48.10	98.54	0.00	
1220.00†	12.363	116.020	1208.21	-111.35	-57.49	117.78	0.00	
1320.00†	12.363	116.020	1305.90	-129.54	-66.89	137.02	0.00	
1420.00†	12.363	116.020	1403.58	-147.73	-76.28	156.26	0.00	
1520.00†	12.363	116.020	1501.26	-165.92	-85.67	175.50	0.00	
1620.00†	12.363	116.020	1598.94	-184.11	-95.06	194.74	0.00	
1720.00†	12.363	116.020	1696.62	-202.30	-104.46	213.98	0.00	
1820.00†	12.363	116.020	1794.30	-220.49	-113.85	233.22	0.00	
1920.00†	12.363	116.020	1891.98	-238.68	-123.24	252.46	0.00	
2020.00†	12.363	116.020	1989.66	-256.87	-132.63	271.70	0.00	
2120.00†	12.363	116.020	2087.34	-275.06	-142.02	290.94	0.00	
2220.00†	12.363	116.020	2185.03	-293.25	-151.42	310.18	0.00	
2320.00†	12.363	116.020	2282.71	-311.44	-160.81	329.42	0.00	
2420.00†	12.363	116.020	2380.39	-329.63	-170.20	348.66	0.00	
2520.00†	12.363	116.020	2478.07	-347.82	-179.59	367.90	0.00	
2620.00†	12.363	116.020	2575.75	-366.02	-188.99	387.14	0.00	



Planned Wellpath Report

AG 31N-31B-L REV-B.0 PWP

Page 3 of 10



REFERENCE WELLPATH IDENTIFICATION			
Operator	SYNERGY RESOURCES CORPORATION	Slot	SLOT#08 AG 31N-31B-L (979'FNL & 545'FEL SEC 32)
Area	COLORADO	Well	AG 31N-31B-L
Field	WELD COUNTY (NAD83,TRUE NORTH)	Wellbore	AG 31N-31B-L PWB
Facility	SEC.32-T06N-R66W		

WELLPATH DATA (194 stations) † = interpolated/extrapolated station								
MD [ft]	Inclination [°]	Azimuth [°]	TVD [ft]	Vert Sect [ft]	North [ft]	East [ft]	DLS [°/100ft]	Comments
2720.00†	12.363	116.020	2673.43	-384.21	-198.38	406.38	0.00	
2820.00†	12.363	116.020	2771.11	-402.40	-207.77	425.62	0.00	
2920.00†	12.363	116.020	2868.79	-420.59	-217.16	444.86	0.00	
3020.00†	12.363	116.020	2966.47	-438.78	-226.56	464.10	0.00	
3120.00†	12.363	116.020	3064.16	-456.97	-235.95	483.34	0.00	
3220.00†	12.363	116.020	3161.84	-475.16	-245.34	502.58	0.00	
3320.00†	12.363	116.020	3259.52	-493.35	-254.73	521.82	0.00	
3420.00†	12.363	116.020	3357.20	-511.54	-264.13	541.06	0.00	
3520.00†	12.363	116.020	3454.88	-529.73	-273.52	560.30	0.00	
3620.00†	12.363	116.020	3552.56	-547.92	-282.91	579.54	0.00	
3720.00†	12.363	116.020	3650.24	-566.11	-292.30	598.78	0.00	
3820.00†	12.363	116.020	3747.92	-584.30	-301.70	618.02	0.00	
3920.00†	12.363	116.020	3845.60	-602.49	-311.09	637.26	0.00	
4020.00†	12.363	116.020	3943.29	-620.68	-320.48	656.50	0.00	
4120.00†	12.363	116.020	4040.97	-638.87	-329.87	675.74	0.00	
4220.00†	12.363	116.020	4138.65	-657.06	-339.26	694.98	0.00	
4320.00†	12.363	116.020	4236.33	-675.25	-348.66	714.23	0.00	
4420.00†	12.363	116.020	4334.01	-693.44	-358.05	733.47	0.00	
4520.00†	12.363	116.020	4431.69	-711.63	-367.44	752.71	0.00	
4620.00†	12.363	116.020	4529.37	-729.82	-376.83	771.95	0.00	
4720.00†	12.363	116.020	4627.05	-748.01	-386.23	791.19	0.00	
4820.00†	12.363	116.020	4724.73	-766.20	-395.62	810.43	0.00	
4920.00†	12.363	116.020	4822.41	-784.40	-405.01	829.67	0.00	
5020.00†	12.363	116.020	4920.10	-802.59	-414.40	848.91	0.00	
5120.00†	12.363	116.020	5017.78	-820.78	-423.80	868.15	0.00	
5220.00†	12.363	116.020	5115.46	-838.97	-433.19	887.39	0.00	
5320.00†	12.363	116.020	5213.14	-857.16	-442.58	906.63	0.00	
5420.00†	12.363	116.020	5310.82	-875.35	-451.97	925.87	0.00	
5520.00†	12.363	116.020	5408.50	-893.54	-461.37	945.11	0.00	
5620.00†	12.363	116.020	5506.18	-911.73	-470.76	964.35	0.00	



Planned Wellpath Report

AG 31N-31B-L REV-B.0 PWP

Page 4 of 10



REFERENCE WELLPATH IDENTIFICATION			
Operator	SYNERGY RESOURCES CORPORATION	Slot	SLOT#08 AG 31N-31B-L (979'FNL & 545'FEL SEC 32)
Area	COLORADO	Well	AG 31N-31B-L
Field	WELD COUNTY (NAD83,TRUE NORTH)	Wellbore	AG 31N-31B-L PWB
Facility	SEC.32-T06N-R66W		

WELLPATH DATA (194 stations) † = interpolated/extrapolated station								
MD [ft]	Inclination [°]	Azimuth [°]	TVD [ft]	Vert Sect [ft]	North [ft]	East [ft]	DLS [°/100ft]	Comments
5720.00†	12.363	116.020	5603.86	-929.92	-480.15	983.59	0.00	
5820.00†	12.363	116.020	5701.54	-948.11	-489.54	1002.83	0.00	
5920.00†	12.363	116.020	5799.23	-966.30	-498.93	1022.07	0.00	
6020.00†	12.363	116.020	5896.91	-984.49	-508.33	1041.31	0.00	
6120.00†	12.363	116.020	5994.59	-1002.68	-517.72	1060.55	0.00	
6220.00†	12.363	116.020	6092.27	-1020.87	-527.11	1079.79	0.00	
6280.55	12.363	116.020	6151.41	-1031.88	-532.80	1091.44	0.00	End of Tangent
6320.00†	9.408	126.556	6190.15	-1037.86	-536.57	1097.83	9.00	
6420.00†	6.165	193.608	6289.40	-1042.12	-546.68	1103.14	9.00	
6520.00†	12.203	239.016	6388.18	-1030.75	-557.36	1092.80	9.00	
6620.00†	20.524	251.615	6484.07	-1004.02	-568.36	1067.05	9.00	
6720.00†	29.240	257.031	6574.72	-962.59	-579.39	1026.53	9.00	
6820.00†	38.079	260.107	6657.87	-907.48	-590.19	972.24	9.00	
6890.66†	44.360	261.628	6711.00	-861.02	-597.54	926.28	9.00	SHARON SPRINGS
6920.00†	46.973	262.162	6731.50	-840.06	-600.49	905.51	9.00	
6943.17†	49.037	262.552	6747.00	-822.85	-602.78	888.45	9.00	NIO A
7020.00†	55.893	263.692	6793.78	-761.97	-610.05	827.99	9.00	
7120.00†	64.829	264.928	6843.19	-675.14	-618.61	741.59	9.00	
7188.63†	70.967	265.673	6869.00	-611.60	-623.81	678.24	9.00	NIO B
7220.00†	73.774	265.994	6878.50	-581.72	-625.98	648.43	9.00	
7320.00†	82.723	266.966	6898.85	-483.99	-631.97	550.81	9.00	
7401.29	90.000	267.727	6904.00 [†]	-403.05	-635.73	469.83	9.00	End of 3D Arc
7420.00†	90.000	267.727	6904.00	-384.37	-636.47	451.13	0.00	
7520.00†	90.000	267.727	6904.00	-284.56	-640.43	351.21	0.00	
7620.00†	90.000	267.727	6904.00	-184.75	-644.40	251.29	0.00	
7720.00†	90.000	267.727	6904.00	-84.94	-648.37	151.37	0.00	
7820.00†	90.000	267.727	6904.00	14.87	-652.34	51.45	0.00	
7920.00†	90.000	267.727	6904.00	114.68	-656.30	-48.47	0.00	
8020.00†	90.000	267.727	6904.00	214.48	-660.27	-148.39	0.00	
8120.00†	90.000	267.727	6904.00	314.29	-664.24	-248.32	0.00	



Planned Wellpath Report

AG 31N-31B-L REV-B.0 PWP

Page 5 of 10



REFERENCE WELLPATH IDENTIFICATION

Operator	SYNERGY RESOURCES CORPORATION	Slot	SLOT#08 AG 31N-31B-L (979'FNL & 545'FEL SEC 32)
Area	COLORADO	Well	AG 31N-31B-L
Field	WELD COUNTY (NAD83,TRUE NORTH)	Wellbore	AG 31N-31B-L PWB
Facility	SEC.32-T06N-R66W		

WELLPATH DATA (194 stations) † = interpolated/extrapolated station

MD [ft]	Inclination [°]	Azimuth [°]	TVD [ft]	Vert Sect [ft]	North [ft]	East [ft]	DLS [°/100ft]	Comments
8220.00†	90.000	267.727	6904.00	414.10	-668.20	-348.24	0.00	
8320.00†	90.000	267.727	6904.00	513.91	-672.17	-448.16	0.00	
8420.00†	90.000	267.727	6904.00	613.72	-676.14	-548.08	0.00	
8520.00†	90.000	267.727	6904.00	713.53	-680.10	-648.00	0.00	
8620.00†	90.000	267.727	6904.00	813.34	-684.07	-747.92	0.00	
8720.00†	90.000	267.727	6904.00	913.15	-688.04	-847.84	0.00	
8820.00†	90.000	267.727	6904.00	1012.96	-692.00	-947.76	0.00	
8920.00†	90.000	267.727	6904.00	1112.77	-695.97	-1047.69	0.00	
9020.00†	90.000	267.727	6904.00	1212.58	-699.94	-1147.61	0.00	
9120.00†	90.000	267.727	6904.00	1312.39	-703.90	-1247.53	0.00	
9220.00†	90.000	267.727	6904.00	1412.20	-707.87	-1347.45	0.00	
9320.00†	90.000	267.727	6904.00	1512.01	-711.84	-1447.37	0.00	
9420.00†	90.000	267.727	6904.00	1611.82	-715.80	-1547.29	0.00	
9520.00†	90.000	267.727	6904.00	1711.63	-719.77	-1647.21	0.00	
9620.00†	90.000	267.727	6904.00	1811.44	-723.74	-1747.14	0.00	
9720.00†	90.000	267.727	6904.00	1911.25	-727.71	-1847.06	0.00	
9820.00†	90.000	267.727	6904.00	2011.05	-731.67	-1946.98	0.00	
9920.00†	90.000	267.727	6904.00	2110.86	-735.64	-2046.90	0.00	
10020.00†	90.000	267.727	6904.00	2210.67	-739.61	-2146.82	0.00	
10120.00†	90.000	267.727	6904.00	2310.48	-743.57	-2246.74	0.00	
10220.00†	90.000	267.727	6904.00	2410.29	-747.54	-2346.66	0.00	
10320.00†	90.000	267.727	6904.00	2510.10	-751.51	-2446.58	0.00	
10420.00†	90.000	267.727	6904.00	2609.91	-755.47	-2546.51	0.00	
10520.00†	90.000	267.727	6904.00	2709.72	-759.44	-2646.43	0.00	
10620.00†	90.000	267.727	6904.00	2809.53	-763.41	-2746.35	0.00	
10720.00†	90.000	267.727	6904.00	2909.34	-767.37	-2846.27	0.00	
10820.00†	90.000	267.727	6904.00	3009.15	-771.34	-2946.19	0.00	
10920.00†	90.000	267.727	6904.00	3108.96	-775.31	-3046.11	0.00	
11020.00†	90.000	267.727	6904.00	3208.77	-779.27	-3146.03	0.00	
11120.00†	90.000	267.727	6904.00	3308.58	-783.24	-3245.95	0.00	



Planned Wellpath Report

AG 31N-31B-L REV-B.0 PWP

Page 6 of 10



REFERENCE WELLPATH IDENTIFICATION

Operator	SYNERGY RESOURCES CORPORATION	Slot	SLOT#08 AG 31N-31B-L (979'FNL & 545'FEL SEC 32)
Area	COLORADO	Well	AG 31N-31B-L
Field	WELD COUNTY (NAD83,TRUE NORTH)	Wellbore	AG 31N-31B-L PWB
Facility	SEC.32-T06N-R66W		

WELLPATH DATA (194 stations) † = interpolated/extrapolated station

MD [ft]	Inclination [°]	Azimuth [°]	TVD [ft]	Vert Sect [ft]	North [ft]	East [ft]	DLS [°/100ft]	Comments
11220.00†	90.000	267.727	6904.00	3408.39	-787.21	-3345.88	0.00	
11320.00†	90.000	267.727	6904.00	3508.20	-791.17	-3445.80	0.00	
11420.00†	90.000	267.727	6904.00	3608.01	-795.14	-3545.72	0.00	
11520.00†	90.000	267.727	6904.00	3707.82	-799.11	-3645.64	0.00	
11620.00†	90.000	267.727	6904.00	3807.62	-803.08	-3745.56	0.00	
11720.00†	90.000	267.727	6904.00	3907.43	-807.04	-3845.48	0.00	
11820.00†	90.000	267.727	6904.00	4007.24	-811.01	-3945.40	0.00	
11920.00†	90.000	267.727	6904.00	4107.05	-814.98	-4045.32	0.00	
12020.00†	90.000	267.727	6904.00	4206.86	-818.94	-4145.25	0.00	
12120.00†	90.000	267.727	6904.00	4306.67	-822.91	-4245.17	0.00	
12220.00†	90.000	267.727	6904.00	4406.48	-826.88	-4345.09	0.00	
12320.00†	90.000	267.727	6904.00	4506.29	-830.84	-4445.01	0.00	
12420.00†	90.000	267.727	6904.00	4606.10	-834.81	-4544.93	0.00	
12520.00†	90.000	267.727	6904.00	4705.91	-838.78	-4644.85	0.00	
12620.00†	90.000	267.727	6904.00	4805.72	-842.74	-4744.77	0.00	
12720.00†	90.000	267.727	6904.00	4905.53	-846.71	-4844.70	0.00	
12820.00†	90.000	267.727	6904.00	5005.34	-850.68	-4944.62	0.00	
12920.00†	90.000	267.727	6904.00	5105.15	-854.64	-5044.54	0.00	
13020.00†	90.000	267.727	6904.00	5204.96	-858.61	-5144.46	0.00	
13120.00†	90.000	267.727	6904.00	5304.77	-862.58	-5244.38	0.00	
13220.00†	90.000	267.727	6904.00	5404.58	-866.54	-5344.30	0.00	
13320.00†	90.000	267.727	6904.00	5504.38	-870.51	-5444.22	0.00	
13420.00†	90.000	267.727	6904.00	5604.19	-874.48	-5544.14	0.00	
13520.00†	90.000	267.727	6904.00	5704.00	-878.44	-5644.07	0.00	
13620.00†	90.000	267.727	6904.00	5803.81	-882.41	-5743.99	0.00	
13720.00†	90.000	267.727	6904.00	5903.62	-886.38	-5843.91	0.00	
13820.00†	90.000	267.727	6904.00	6003.43	-890.35	-5943.83	0.00	
13920.00†	90.000	267.727	6904.00	6103.24	-894.31	-6043.75	0.00	
14020.00†	90.000	267.727	6904.00	6203.05	-898.28	-6143.67	0.00	
14120.00†	90.000	267.727	6904.00	6302.86	-902.25	-6243.59	0.00	



Planned Wellpath Report

AG 31N-31B-L REV-B.0 PWP

Page 7 of 10



REFERENCE WELLPATH IDENTIFICATION

Operator	SYNERGY RESOURCES CORPORATION	Slot	SLOT#08 AG 31N-31B-L (979'FNL & 545'FEL SEC 32)
Area	COLORADO	Well	AG 31N-31B-L
Field	WELD COUNTY (NAD83,TRUE NORTH)	Wellbore	AG 31N-31B-L PWB
Facility	SEC.32-T06N-R66W		

WELLPATH DATA (194 stations) † = interpolated/extrapolated station

MD [ft]	Inclination [°]	Azimuth [°]	TVD [ft]	Vert Sect [ft]	North [ft]	East [ft]	DLS [°/100ft]	Comments
14220.00†	90.000	267.727	6904.00	6402.67	-906.21	-6343.51	0.00	
14320.00†	90.000	267.727	6904.00	6502.48	-910.18	-6443.44	0.00	
14420.00†	90.000	267.727	6904.00	6602.29	-914.15	-6543.36	0.00	
14520.00†	90.000	267.727	6904.00	6702.10	-918.11	-6643.28	0.00	
14620.00†	90.000	267.727	6904.00	6801.91	-922.08	-6743.20	0.00	
14720.00†	90.000	267.727	6904.00	6901.72	-926.05	-6843.12	0.00	
14820.00†	90.000	267.727	6904.00	7001.53	-930.01	-6943.04	0.00	
14920.00†	90.000	267.727	6904.00	7101.34	-933.98	-7042.96	0.00	
15020.00†	90.000	267.727	6904.00	7201.15	-937.95	-7142.88	0.00	
15120.00†	90.000	267.727	6904.00	7300.95	-941.91	-7242.81	0.00	
15220.00†	90.000	267.727	6904.00	7400.76	-945.88	-7342.73	0.00	
15320.00†	90.000	267.727	6904.00	7500.57	-949.85	-7442.65	0.00	
15420.00†	90.000	267.727	6904.00	7600.38	-953.81	-7542.57	0.00	
15520.00†	90.000	267.727	6904.00	7700.19	-957.78	-7642.49	0.00	
15620.00†	90.000	267.727	6904.00	7800.00	-961.75	-7742.41	0.00	
15720.00†	90.000	267.727	6904.00	7899.81	-965.72	-7842.33	0.00	
15820.00†	90.000	267.727	6904.00	7999.62	-969.68	-7942.26	0.00	
15920.00†	90.000	267.727	6904.00	8099.43	-973.65	-8042.18	0.00	
16020.00†	90.000	267.727	6904.00	8199.24	-977.62	-8142.10	0.00	
16120.00†	90.000	267.727	6904.00	8299.05	-981.58	-8242.02	0.00	
16220.00†	90.000	267.727	6904.00	8398.86	-985.55	-8341.94	0.00	
16320.00†	90.000	267.727	6904.00	8498.67	-989.52	-8441.86	0.00	
16420.00†	90.000	267.727	6904.00	8598.48	-993.48	-8541.78	0.00	
16520.00†	90.000	267.727	6904.00	8698.29	-997.45	-8641.70	0.00	
16620.00†	90.000	267.727	6904.00	8798.10	-1001.42	-8741.63	0.00	
16720.00†	90.000	267.727	6904.00	8897.91	-1005.38	-8841.55	0.00	
16820.00†	90.000	267.727	6904.00	8997.71	-1009.35	-8941.47	0.00	
16920.00†	90.000	267.727	6904.00	9097.52	-1013.32	-9041.39	0.00	
17020.00†	90.000	267.727	6904.00	9197.33	-1017.28	-9141.31	0.00	
17120.00†	90.000	267.727	6904.00	9297.14	-1021.25	-9241.23	0.00	



Planned Wellpath Report

AG 31N-31B-L REV-B.0 PWP

Page 8 of 10



REFERENCE WELLPATH IDENTIFICATION

Operator	SYNERGY RESOURCES CORPORATION	Slot	SLOT#08 AG 31N-31B-L (979'FNL & 545'FEL SEC 32)
Area	COLORADO	Well	AG 31N-31B-L
Field	WELD COUNTY (NAD83,TRUE NORTH)	Wellbore	AG 31N-31B-L PWB
Facility	SEC.32-T06N-R66W		

WELLPATH DATA (194 stations) † = interpolated/extrapolated station

MD [ft]	Inclination [°]	Azimuth [°]	TVD [ft]	Vert Sect [ft]	North [ft]	East [ft]	DLS [°/100ft]	Comments
17220.00†	90.000	267.727	6904.00	9396.95	-1025.22	-9341.15	0.00	
17320.00†	90.000	267.727	6904.00	9496.76	-1029.18	-9441.07	0.00	
17420.00†	90.000	267.727	6904.00	9596.57	-1033.15	-9541.00	0.00	
17520.00†	90.000	267.727	6904.00	9696.38	-1037.12	-9640.92	0.00	
17620.00†	90.000	267.727	6904.00	9796.19	-1041.09	-9740.84	0.00	
17720.00†	90.000	267.727	6904.00	9896.00	-1045.05	-9840.76	0.00	
17820.00†	90.000	267.727	6904.00	9995.81	-1049.02	-9940.68	0.00	
17920.00†	90.000	267.727	6904.00	10095.62	-1052.99	-10040.60	0.00	
18020.00†	90.000	267.727	6904.00	10195.43	-1056.95	-10140.52	0.00	
18120.00†	90.000	267.727	6904.00	10295.24	-1060.92	-10240.44	0.00	
18220.00†	90.000	267.727	6904.00	10395.05	-1064.89	-10340.37	0.00	
18320.00†	90.000	267.727	6904.00	10494.86	-1068.85	-10440.29	0.00	
18420.00†	90.000	267.727	6904.00	10594.67	-1072.82	-10540.21	0.00	
18421.58	90.000	267.727	6904.00 ²	10596.25	-1072.88	-10541.79	0.00	End of Tangent

HOLE & CASING SECTIONS - Ref Wellbore: AG 31N-31B-L PWB Ref Wellpath: AG 31N-31B-L REV-B.0 PWP

String/Diameter	Start MD [ft]	End MD [ft]	Interval [ft]	Start TVD [ft]	End TVD [ft]	Start N/S [ft]	Start E/W [ft]	End N/S [ft]	End E/W [ft]
13.5in Open Hole	20.00	1800.00	1780.00	20.00	1774.77	0.00	0.00	-111.97	229.37
8.5in Open Hole	1800.00	18421.58	16621.58	1774.77	6904.00	-111.97	229.37	-1072.88	-10541.79



Planned Wellpath Report

AG 31N-31B-L REV-B.0 PWP

Page 9 of 10



REFERENCE WELLPATH IDENTIFICATION

Operator	SYNERGY RESOURCES CORPORATION	Slot	SLOT#08 AG 31N-31B-L (979'FNL & 545'FEL SEC 32)
Area	COLORADO	Well	AG 31N-31B-L
Field	WELD COUNTY (NAD83,TRUE NORTH)	Wellbore	AG 31N-31B-L PWB
Facility	SEC.32-T06N-R66W		

TARGETS

Name	MD [ft]	TVD [ft]	North [ft]	East [ft]	Grid East [US ft]	Grid North [US ft]	Latitude	Longitude	Shape
SEC.31-T06N-R66W		-20.00	102.31	95.17	3196477.05	1407381.48	40°26'58.261"N	104°47'38.472"W	polygon
SEC.32-T06N-R66W		-20.00	102.31	95.17	3196477.05	1407381.48	40°26'58.261"N	104°47'38.472"W	polygon
2) AG 31N-31B-L BHL REV-1 ON PLAT (NIO-B, 1611'FNL & 75'FWL SEC 31)	18421.58	6904.00	-1072.88	-10541.79	3185850.19	1406121.73	40°26'46.626"N	104°49'56.053"W	circle
1) AG 31N-31B-L TOP OF PROD (1627'FNL & 75'FEL SEC 32)	7401.29	6904.00	-635.73	469.83	3196857.56	1406646.48	40°26'50.968"N	104°47'33.626"W	circle

SURVEY PROGRAM - Ref Wellbore: AG 31N-31B-L PWB Ref Wellpath: AG 31N-31B-L REV-B.0 PWP

Start MD [ft]	End MD [ft]	Positional Uncertainty Model	Log Name/Comment	Wellbore
20.00	1800.00	Custom BHI NaviTrak (Standard Rotating+Axial Corr) (Rockies 0.03Gt model)		AG 31N-31B-L PWB
1800.00	18422.00	Custom BHI AutoTrak Curve (Short) (Rockies 0.03Gt model)		AG 31N-31B-L PWB



Planned Wellpath Report

AG 31N-31B-L REV-B.0 PWP

Page 10 of 10



REFERENCE WELLPATH IDENTIFICATION

Operator	SYNERGY RESOURCES CORPORATION	Slot	SLOT#08 AG 31N-31B-L (979'FNL & 545'FEL SEC 32)
Area	COLORADO	Well	AG 31N-31B-L
Field	WELD COUNTY (NAD83,TRUE NORTH)	Wellbore	AG 31N-31B-L PWB
Facility	SEC.32-T06N-R66W		

WELLPATH COMMENTS

MD [ft]	Inclination [°]	Azimuth [°]	TVD [ft]	Comment
6890.66	44.360	261.628	6711.00	SHARON SPRINGS
6943.17	49.037	262.552	6747.00	NIO A
7188.63	70.967	265.673	6869.00	NIO B