

# SYNERGY RESOURCES CORPORATION

Location: COLORADO Slot: SLOT#10 AG 5N-31A-L (1008'FNL & 572'FEL SEC 32)  
Field: WELD COUNTY (NAD83, TRUE NORTH) Well: AG 5N-31A-L  
Facility: SEC.32-T06N-R66W Wellbore: AG 5N-31A-L PWB

Plot reference wellpath is AG 5N-31A-L REV-B.0 PWP

|   |  |
|---|--|
| True vertical depths are referenced to PRECISION 462 (20') (RKB)                              | * = Wellpath was transformed from a different geodetic datum |
| Measured depths are referenced to PRECISION 462 (20') (RKB)                                   | North Reference: True north                                  |
| PRECISION 462 (20') (RKB) to Mean Sea Level: 4724 feet  | Scale: True distance   |
| Mean Sea Level to Mud line (At Slot: SLOT#10 AG 5N-31A-L (1008'FNL & 572'FEL SEC 32)): 0 feet | Depths are in feet   |
| Coordinates are in feet referenced to Slot  | Created by: wagnjam on 2016-09-26                            |
|   | Database: WA_DEN_Denver_Defn                                 |

## Location Information

| Facility Name  |              |              | Grid East (US ft) | Grid North (US ft) | Latitude       | Longitude       |
|--|--------------|--------------|-------------------|--------------------|----------------|-----------------|
| SEC.32-T06N-R66W   |              |              | 3196477.049       | 1407381.484        | 40°26'58.261"N | 104°47'38.472"W |
| Slot   | Local N (ft) | Local E (ft) | Grid East (US ft) | Grid North (US ft) | Latitude       | Longitude       |
| SLOT#10 AG 5N-31A-L (1008'FNL & 572'FEL SEC 32)  | -131.86      | -122.46      | 3196355.647       | 1407248.657        | 40°26'56.958"N | 104°47'40.056"W |
| PRECISION 462 (20') (RKB) to Mud line (At Slot: SLOT#10 AG 5N-31A-L (1008'FNL & 572'FEL SEC 32)) |              |              |                   |                    | 4724ft         |                 |
| Mean Sea Level to Mud line (At Slot: SLOT#10 AG 5N-31A-L (1008'FNL & 572'FEL SEC 32))            |              |              |                   |                    | 0ft            |                 |
| PRECISION 462 (20') (RKB) to Mean Sea Level  |              |              |                   |                    | 4724ft         |                 |

## Wellpath Comments

| MD (ft) | X (ft) | Y (ft)   | TVD (ft) | Inclination (°) | Azimuth (°) | VS (ft) | Comment        |
|---------|--------|----------|----------|-----------------|-------------|---------|----------------|
| 7024.40 | 818.26 | -1019.59 | 6718.00  | 60.137          | 261.976     | -667.35 | SHARON SPRINGS |
| 7105.79 | 745.90 | -1028.75 | 6754.00  | 67.327          | 263.541     | -594.42 | NIO-A          |

## Well Profile Data

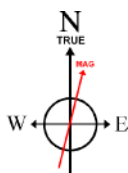
| Design Comment | MD (ft)  | Inc (°) | Az (°)  | TVD (ft) | Local N (ft) | Local E (ft) | DLS (°/100ft) | VS (ft)  |
|----------------|----------|---------|---------|----------|--------------|--------------|---------------|----------|
| Tie On         | 20.00    | 0.000   | 128.638 | 20.00    | 0.00         | 0.00         | 0.00          | 0.00     |
| End of Tangent | 300.00   | 0.000   | 128.638 | 300.00   | 0.00         | 0.00         | 0.00          | 0.00     |
| End of Build   | 1043.58  | 14.872  | 128.638 | 1035.26  | -59.92       | 74.95        | 2.00          | -65.82   |
| End of Tangent | 6237.48  | 14.872  | 128.638 | 6055.18  | -892.26      | 1116.19      | 0.00          | -980.18  |
| End of 3D Arc  | 7361.71  | 90.000  | 267.708 | 6804.00  | -1047.40     | 497.36       | 9.00          | -345.72  |
| End of Tangent | 18385.90 | 90.000  | 267.708 | 6804.00  | -1488.21     | -10518.01    | 0.00          | 10622.78 |

## Targets

| Name  | MD (ft)  | TVD (ft) | Local N (ft) | Local E (ft) | Grid East (US ft) | Grid North (US ft) | Latitude       | Longitude       |
|---|----------|----------|--------------|--------------|-------------------|--------------------|----------------|-----------------|
| SEC.31-T06N-R66W  |          | -20.00   | 131.86       | 122.46       | 3196477.05        | 1407381.48         | 40°26'58.261"N | 104°47'38.472"W |
| SEC.32-T06N-R66W  |          | -20.00   | 131.86       | 122.46       | 3196477.05        | 1407381.48         | 40°26'58.261"N | 104°47'38.472"W |
| AG 5N-31A-L BHL REV-1 ON PLAT (NIO-A, 2055'FNL & 75'FWL SEC 31) | 18385.90 | 6804.00  | -1488.21     | -10518.01    | 3185850.22        | 1405676.87         | 40°26'42.230"N | 104°49'56.096"W |
| AG 5N-31A-L TOP OF PROD (2068'FNL & 75'FEL SEC 32)              | 7361.71  | 6804.00  | -1047.40     | 497.36       | 3196961.31        | 1406305.29         | 40°26'46.608"N | 104°47'33.623"W |

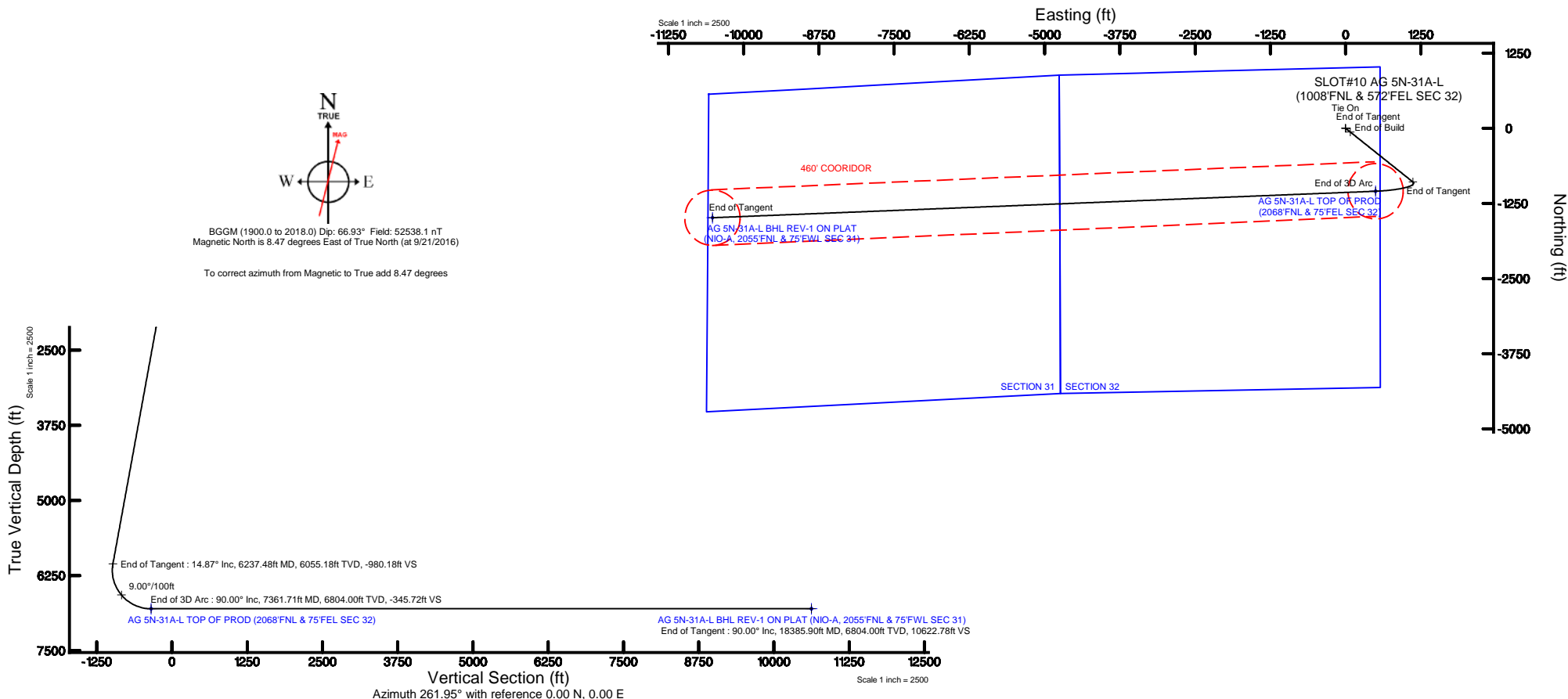
## Tie-On Position

| MD (ft) | Inc (°) | Az (°)  | TVD (ft) | Local N (ft) | Local E (ft) | Grid East (US ft) | Grid North (US ft) | Latitude       | Longitude       |
|---------|---------|---------|----------|--------------|--------------|-------------------|--------------------|----------------|-----------------|
| 20.00   | 0.000   | 128.638 | 20.00    | 0.00         | 0.00         | 3196355.65        | 1407248.66         | 40°26'56.958"N | 104°47'40.056"W |



BGGM (1900.0 to 2018.0) Dip: 66.93° Field: 52538.1 nT  
Magnetic North is 8.47 degrees East of True North (at 9/21/2016)

To correct azimuth from Magnetic to True add 8.47 degrees





# SYNERGY RESOURCES CORPORATION

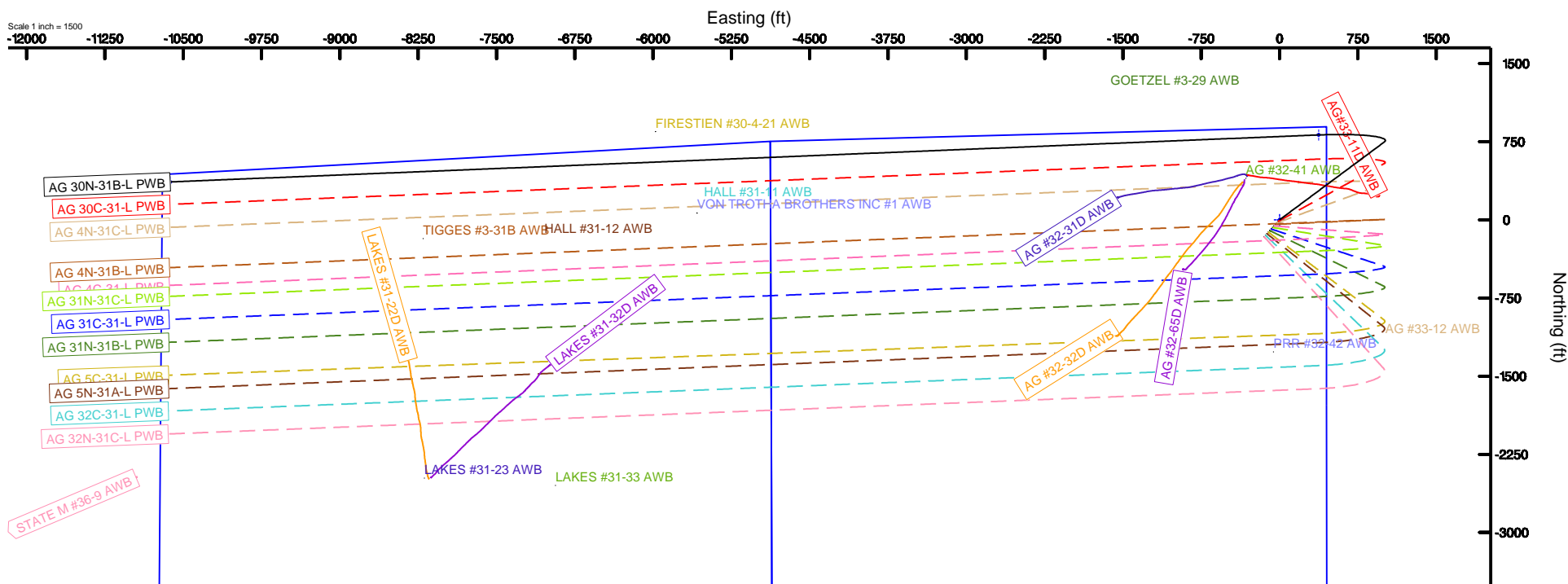
Location: COLORADO Slot: SLOT#01 AG 30N-31B-L (879FNL & 449FEL SEC 32)  
Field: WELD COUNTY (NAD83, TRUE NORTH) Well: AG 30N-31B-L  
Facility: SEC.32-T06N-R66W Wellbore: AG 30N-31B-L PWB



BGGM (1900.0 to 2018.0) Dip: 66.93° Field: 52538.1 nT  
Magnetic North is 8.47 degrees East of True North (at 9/21/2016)

To correct azimuth from Magnetic to True add 8.47 degrees

Scale 1 inch = 1500



## ~VERSION INFORMATION

VERS. 2.0 : CWLS LOG ASCII STANDARD-VERSION 2.0

WRAP. NO : ASCII DATA SECTION CONTAINS ONE ROW PER WELLPATH STATION

## ~WELL INFORMATION

| #MNEM | .UNITS | DATA                           | :DESCRIPTION                  |
|-------|--------|--------------------------------|-------------------------------|
| #---- | .----- | ----                           | :-----                        |
| STRT  | .ft    | 0.00                           | :START MD                     |
| STOP  | .ft    | 18385.90                       | :STOP MD                      |
| STEP  | .ft    | 0.0                            | :STEP (non-uniform increment) |
| NULL  | .      | -999.99                        | :NULL                         |
| COMP  | .      | SYNERGY RESOURCES CORPORATION  | :OPERATOR                     |
| WELL  | .      | AG 5N-31A-L                    | :WELL                         |
| FLD   | .      | WELD COUNTY (NAD83,TRUE NORTH) | :FIELD                        |
| LOC   | .      | COLORADO                       | :AREA (aka: Location)         |
| CNTY  | .      | N/A                            | :COUNTY                       |
| STAT  | .      | N/A                            | :STATE                        |
| CTRY  | .      | N/A                            | :COUNTRY                      |
| SRVC  | .      | Baker Hughes                   | :CONTRACTOR                   |
| DATE  | .      | 09/21/2016                     | :LOG REV DATE                 |
| API   | .      |                                | :API NUMBER                   |

## ~OTHER INFORMATION

#Software: WellArchitect(R) Version 5.0

| #MNEM     | .UNITS | DATA  | :DESCRIPTION                   |
|-----------|--------|---|--------------------------------|
| #----     | .----- | ----  | :-----                         |
| WPTYPE    | .      | PLANNED WELLPATH                                | :WELLPATH TYPE                 |
| FACILITY  | .      | SEC.32-T06N-R66W                                | :FACILITY                      |
| SLOT      | .      | SLOT#10 AG 5N-31A-L (1008'FNL & 572'FEL SEC 32) | :SLOT                          |
| WELLBORE  | .      | AG 5N-31A-L PWB                                 | :WELLBORE                      |
| WELLPATH  | .      | AG 5N-31A-L REV-B.0 PWP                         | :WELLPATH                      |
| MDREFPT   | .      | PRECISION 462 (20') (RKB)                       | :MD REFERENCE POINT            |
| TVDREFPT  | .      | PRECISION 462 (20') (RKB)                       | :TVD REFERENCE POINT           |
| LCLREFPT  | .      | Slot  | :LOCAL COORDINATE REFERENCE PT |
| VSAZIMUTH | .deg   | 261.95  | :VERTICAL SECTION AZIMUTH      |
| VSORIGN   | .ft    | 0.00  | :VERTICAL SECTION ORIGIN NORTH |
| VSORIGE   | .ft    | 0.00  | :VERTICAL SECTION ORIGIN EAST  |

## ~CURVE (WELLPATH) INFORMATION

| #MNEM  | .UNITS | :DESCRIPTION                      |
|--------|--------|-----------------------------------|
| #----  | .----- | :-----                            |
| DEPT   | .ft    | :MEASURED DEPTH                   |
| INC    | .deg   | :INCLINATION                      |
| AZI    | .deg   | :AZIMUTH                          |
| TVD    | .ft    | :TRUE VERTICAL DEPTH              |
| SECT   | .ft    | :CROSS SECTION (CURTAIN/VERTICAL) |
| LOCALN | .ft    | :LOCAL NORTH                      |
| LOCALE | .ft    | :LOCAL EAST                       |

AG\_5N-31A-L\_REV-B.0\_PWP.1as

LAT .deg :LATITUDE  
 LONG .deg :LONGITUDE  
 DLS .deg/100ft :DOGLEG SEVERITY

~ASCII DATA

|         |       |        |         |         |         |        |            |              |      |
|---------|-------|--------|---------|---------|---------|--------|------------|--------------|------|
| 0.00    | 0.00  | 128.64 | 0.00    | 0.00    | 0.00    | 0.00   | 40.4491550 | -104.7944600 | 0.00 |
| 20.00   | 0.00  | 128.64 | 20.00   | 0.00    | 0.00    | 0.00   | 40.4491550 | -104.7944600 | 0.00 |
| 120.00  | 0.00  | 128.64 | 120.00  | 0.00    | 0.00    | 0.00   | 40.4491550 | -104.7944600 | 0.00 |
| 220.00  | 0.00  | 128.64 | 220.00  | 0.00    | 0.00    | 0.00   | 40.4491550 | -104.7944600 | 0.00 |
| 300.00  | 0.00  | 128.64 | 300.00  | 0.00    | 0.00    | 0.00   | 40.4491550 | -104.7944600 | 0.00 |
| 320.00  | 0.40  | 128.64 | 320.00  | -0.05   | -0.04   | 0.05   | 40.4491549 | -104.7944598 | 2.00 |
| 420.00  | 2.40  | 128.64 | 419.96  | -1.72   | -1.57   | 1.96   | 40.4491507 | -104.7944529 | 2.00 |
| 520.00  | 4.40  | 128.64 | 519.78  | -5.79   | -5.27   | 6.60   | 40.4491405 | -104.7944363 | 2.00 |
| 620.00  | 6.40  | 128.64 | 619.33  | -12.25  | -11.15  | 13.95  | 40.4491244 | -104.7944099 | 2.00 |
| 720.00  | 8.40  | 128.64 | 718.50  | -21.08  | -19.19  | 24.01  | 40.4491023 | -104.7943737 | 2.00 |
| 820.00  | 10.40 | 128.64 | 817.15  | -32.28  | -29.39  | 36.76  | 40.4490743 | -104.7943279 | 2.00 |
| 920.00  | 12.40 | 128.64 | 915.17  | -45.84  | -41.73  | 52.20  | 40.4490405 | -104.7942724 | 2.00 |
| 1020.00 | 14.40 | 128.64 | 1012.44 | -61.74  | -56.20  | 70.30  | 40.4490007 | -104.7942074 | 2.00 |
| 1043.58 | 14.87 | 128.64 | 1035.26 | -65.82  | -59.92  | 74.95  | 40.4489905 | -104.7941907 | 2.00 |
| 1120.00 | 14.87 | 128.64 | 1109.12 | -79.28  | -72.16  | 90.28  | 40.4489569 | -104.7941356 | 0.00 |
| 1220.00 | 14.87 | 128.64 | 1205.77 | -96.88  | -88.19  | 110.32 | 40.4489129 | -104.7940636 | 0.00 |
| 1320.00 | 14.87 | 128.64 | 1302.42 | -114.48 | -104.22 | 130.37 | 40.4488689 | -104.7939916 | 0.00 |
| 1420.00 | 14.87 | 128.64 | 1399.07 | -132.09 | -120.24 | 150.42 | 40.4488250 | -104.7939196 | 0.00 |
| 1520.00 | 14.87 | 128.64 | 1495.72 | -149.69 | -136.27 | 170.46 | 40.4487810 | -104.7938475 | 0.00 |
| 1620.00 | 14.87 | 128.64 | 1592.37 | -167.30 | -152.29 | 190.51 | 40.4487370 | -104.7937755 | 0.00 |
| 1720.00 | 14.87 | 128.64 | 1689.02 | -184.90 | -168.32 | 210.56 | 40.4486930 | -104.7937035 | 0.00 |
| 1820.00 | 14.87 | 128.64 | 1785.67 | -202.51 | -184.34 | 230.61 | 40.4486490 | -104.7936314 | 0.00 |
| 1920.00 | 14.87 | 128.64 | 1882.32 | -220.11 | -200.37 | 250.65 | 40.4486050 | -104.7935594 | 0.00 |
| 2020.00 | 14.87 | 128.64 | 1978.97 | -237.72 | -216.39 | 270.70 | 40.4485610 | -104.7934874 | 0.00 |
| 2120.00 | 14.87 | 128.64 | 2075.62 | -255.32 | -232.42 | 290.75 | 40.4485170 | -104.7934154 | 0.00 |
| 2220.00 | 14.87 | 128.64 | 2172.27 | -272.92 | -248.44 | 310.80 | 40.4484730 | -104.7933433 | 0.00 |
| 2320.00 | 14.87 | 128.64 | 2268.92 | -290.53 | -264.47 | 330.84 | 40.4484291 | -104.7932713 | 0.00 |
| 2420.00 | 14.87 | 128.64 | 2365.57 | -308.13 | -280.49 | 350.89 | 40.4483851 | -104.7931993 | 0.00 |
| 2520.00 | 14.87 | 128.64 | 2462.22 | -325.74 | -296.52 | 370.94 | 40.4483411 | -104.7931272 | 0.00 |
| 2620.00 | 14.87 | 128.64 | 2558.87 | -343.34 | -312.55 | 390.98 | 40.4482971 | -104.7930552 | 0.00 |
| 2720.00 | 14.87 | 128.64 | 2655.52 | -360.95 | -328.57 | 411.03 | 40.4482531 | -104.7929832 | 0.00 |
| 2820.00 | 14.87 | 128.64 | 2752.18 | -378.55 | -344.60 | 431.08 | 40.4482091 | -104.7929112 | 0.00 |
| 2920.00 | 14.87 | 128.64 | 2848.83 | -396.16 | -360.62 | 451.13 | 40.4481651 | -104.7928391 | 0.00 |
| 3020.00 | 14.87 | 128.64 | 2945.48 | -413.76 | -376.65 | 471.17 | 40.4481211 | -104.7927671 | 0.00 |
| 3120.00 | 14.87 | 128.64 | 3042.13 | -431.36 | -392.67 | 491.22 | 40.4480771 | -104.7926951 | 0.00 |
| 3220.00 | 14.87 | 128.64 | 3138.78 | -448.97 | -408.70 | 511.27 | 40.4480332 | -104.7926230 | 0.00 |
| 3320.00 | 14.87 | 128.64 | 3235.43 | -466.57 | -424.72 | 531.32 | 40.4479892 | -104.7925510 | 0.00 |
| 3420.00 | 14.87 | 128.64 | 3332.08 | -484.18 | -440.75 | 551.36 | 40.4479452 | -104.7924790 | 0.00 |
| 3520.00 | 14.87 | 128.64 | 3428.73 | -501.78 | -456.77 | 571.41 | 40.4479012 | -104.7924070 | 0.00 |
| 3620.00 | 14.87 | 128.64 | 3525.38 | -519.39 | -472.80 | 591.46 | 40.4478572 | -104.7923349 | 0.00 |
| 3720.00 | 14.87 | 128.64 | 3622.03 | -536.99 | -488.82 | 611.50 | 40.4478132 | -104.7922629 | 0.00 |
| 3820.00 | 14.87 | 128.64 | 3718.68 | -554.60 | -504.85 | 631.55 | 40.4477692 | -104.7921909 | 0.00 |
| 3920.00 | 14.87 | 128.64 | 3815.33 | -572.20 | -520.88 | 651.60 | 40.4477252 | -104.7921189 | 0.00 |

AG\_5N-31A-L\_REV-B.0\_PWP.1as

|         |       |        |         |         |          |         |            |              |      |
|---------|-------|--------|---------|---------|----------|---------|------------|--------------|------|
| 4020.00 | 14.87 | 128.64 | 3911.98 | -589.80 | -536.90  | 671.65  | 40.4476812 | -104.7920468 | 0.00 |
| 4120.00 | 14.87 | 128.64 | 4008.63 | -607.41 | -552.93  | 691.69  | 40.4476373 | -104.7919748 | 0.00 |
| 4220.00 | 14.87 | 128.64 | 4105.28 | -625.01 | -568.95  | 711.74  | 40.4475933 | -104.7919028 | 0.00 |
| 4320.00 | 14.87 | 128.64 | 4201.93 | -642.62 | -584.98  | 731.79  | 40.4475493 | -104.7918308 | 0.00 |
| 4420.00 | 14.87 | 128.64 | 4298.58 | -660.22 | -601.00  | 751.84  | 40.4475053 | -104.7917587 | 0.00 |
| 4520.00 | 14.87 | 128.64 | 4395.23 | -677.83 | -617.03  | 771.88  | 40.4474613 | -104.7916867 | 0.00 |
| 4620.00 | 14.87 | 128.64 | 4491.88 | -695.43 | -633.05  | 791.93  | 40.4474173 | -104.7916147 | 0.00 |
| 4720.00 | 14.87 | 128.64 | 4588.53 | -713.04 | -649.08  | 811.98  | 40.4473733 | -104.7915426 | 0.00 |
| 4820.00 | 14.87 | 128.64 | 4685.18 | -730.64 | -665.10  | 832.02  | 40.4473293 | -104.7914706 | 0.00 |
| 4920.00 | 14.87 | 128.64 | 4781.83 | -748.24 | -681.13  | 852.07  | 40.4472853 | -104.7913986 | 0.00 |
| 5020.00 | 14.87 | 128.64 | 4878.48 | -765.85 | -697.16  | 872.12  | 40.4472414 | -104.7913266 | 0.00 |
| 5120.00 | 14.87 | 128.64 | 4975.13 | -783.45 | -713.18  | 892.17  | 40.4471974 | -104.7912545 | 0.00 |
| 5220.00 | 14.87 | 128.64 | 5071.78 | -801.06 | -729.21  | 912.21  | 40.4471534 | -104.7911825 | 0.00 |
| 5320.00 | 14.87 | 128.64 | 5168.43 | -818.66 | -745.23  | 932.26  | 40.4471094 | -104.7911105 | 0.00 |
| 5420.00 | 14.87 | 128.64 | 5265.08 | -836.27 | -761.26  | 952.31  | 40.4470654 | -104.7910385 | 0.00 |
| 5520.00 | 14.87 | 128.64 | 5361.74 | -853.87 | -777.28  | 972.36  | 40.4470214 | -104.7909664 | 0.00 |
| 5620.00 | 14.87 | 128.64 | 5458.39 | -871.48 | -793.31  | 992.40  | 40.4469774 | -104.7908944 | 0.00 |
| 5720.00 | 14.87 | 128.64 | 5555.04 | -889.08 | -809.33  | 1012.45 | 40.4469334 | -104.7908224 | 0.00 |
| 5820.00 | 14.87 | 128.64 | 5651.69 | -906.68 | -825.36  | 1032.50 | 40.4468894 | -104.7907504 | 0.00 |
| 5920.00 | 14.87 | 128.64 | 5748.34 | -924.29 | -841.38  | 1052.54 | 40.4468454 | -104.7906783 | 0.00 |
| 6020.00 | 14.87 | 128.64 | 5844.99 | -941.89 | -857.41  | 1072.59 | 40.4468015 | -104.7906063 | 0.00 |
| 6120.00 | 14.87 | 128.64 | 5941.64 | -959.50 | -873.43  | 1092.64 | 40.4467575 | -104.7905343 | 0.00 |
| 6220.00 | 14.87 | 128.64 | 6038.29 | -977.10 | -889.46  | 1112.69 | 40.4467135 | -104.7904623 | 0.00 |
| 6237.48 | 14.87 | 128.64 | 6055.18 | -980.18 | -892.26  | 1116.19 | 40.4467058 | -104.7904497 | 0.00 |
| 6320.00 | 10.55 | 156.76 | 6135.74 | -989.44 | -905.84  | 1127.46 | 40.4466685 | -104.7904092 | 9.00 |
| 6420.00 | 11.16 | 205.89 | 6234.15 | -986.42 | -922.99  | 1126.84 | 40.4466214 | -104.7904114 | 9.00 |
| 6520.00 | 17.27 | 233.69 | 6331.14 | -967.90 | -940.53  | 1110.62 | 40.4465733 | -104.7904697 | 9.00 |
| 6620.00 | 25.15 | 245.96 | 6424.34 | -934.33 | -958.02  | 1079.19 | 40.4465253 | -104.7905826 | 9.00 |
| 6720.00 | 33.57 | 252.51 | 6511.45 | -886.54 | -975.02  | 1033.33 | 40.4464786 | -104.7907474 | 9.00 |
| 6820.00 | 42.20 | 256.65 | 6590.31 | -825.70 | -991.11  | 974.16  | 40.4464345 | -104.7909600 | 9.00 |
| 6920.00 | 50.95 | 259.59 | 6658.99 | -753.31 | -1005.91 | 903.14  | 40.4463938 | -104.7912151 | 9.00 |
| 7020.00 | 59.75 | 261.89 | 6715.80 | -671.15 | -1019.05 | 822.03  | 40.4463578 | -104.7915066 | 9.00 |
| 7120.00 | 68.58 | 263.80 | 6759.33 | -581.25 | -1030.20 | 732.81  | 40.4463272 | -104.7918271 | 9.00 |
| 7220.00 | 77.44 | 265.49 | 6788.52 | -485.83 | -1039.09 | 637.69  | 40.4463028 | -104.7921689 | 9.00 |
| 7320.00 | 86.30 | 267.06 | 6802.65 | -387.22 | -1045.50 | 539.00  | 40.4462852 | -104.7925235 | 9.00 |
| 7361.71 | 90.00 | 267.71 | 6804.00 | -345.72 | -1047.40 | 497.36  | 40.4462800 | -104.7926731 | 9.00 |
| 7420.00 | 90.00 | 267.71 | 6804.00 | -287.73 | -1049.73 | 439.12  | 40.4462736 | -104.7928823 | 0.00 |
| 7520.00 | 90.00 | 267.71 | 6804.00 | -188.23 | -1053.73 | 339.20  | 40.4462626 | -104.7932413 | 0.00 |
| 7620.00 | 90.00 | 267.71 | 6804.00 | -88.74  | -1057.73 | 239.28  | 40.4462517 | -104.7936003 | 0.00 |
| 7720.00 | 90.00 | 267.71 | 6804.00 | 10.76   | -1061.73 | 139.36  | 40.4462407 | -104.7939593 | 0.00 |
| 7820.00 | 90.00 | 267.71 | 6804.00 | 110.25  | -1065.73 | 39.44   | 40.4462297 | -104.7943183 | 0.00 |
| 7920.00 | 90.00 | 267.71 | 6804.00 | 209.75  | -1069.72 | -60.48  | 40.4462187 | -104.7946773 | 0.00 |
| 8020.00 | 90.00 | 267.71 | 6804.00 | 309.24  | -1073.72 | -160.40 | 40.4462078 | -104.7950363 | 0.00 |
| 8120.00 | 90.00 | 267.71 | 6804.00 | 408.74  | -1077.72 | -260.32 | 40.4461968 | -104.7953953 | 0.00 |
| 8220.00 | 90.00 | 267.71 | 6804.00 | 508.23  | -1081.72 | -360.24 | 40.4461858 | -104.7957543 | 0.00 |
| 8320.00 | 90.00 | 267.71 | 6804.00 | 607.73  | -1085.72 | -460.16 | 40.4461748 | -104.7961133 | 0.00 |
| 8420.00 | 90.00 | 267.71 | 6804.00 | 707.22  | -1089.72 | -560.08 | 40.4461638 | -104.7964723 | 0.00 |
| 8520.00 | 90.00 | 267.71 | 6804.00 | 806.72  | -1093.72 | -660.00 | 40.4461529 | -104.7968313 | 0.00 |

AG\_5N-31A-L\_REV-B.0\_PWP.1as

|          |       |        |         |         |          |          |            |              |      |
|----------|-------|--------|---------|---------|----------|----------|------------|--------------|------|
| 8620.00  | 90.00 | 267.71 | 6804.00 | 906.21  | -1097.71 | -759.92  | 40.4461419 | -104.7971903 | 0.00 |
| 8720.00  | 90.00 | 267.71 | 6804.00 | 1005.71 | -1101.71 | -859.84  | 40.4461309 | -104.7975493 | 0.00 |
| 8820.00  | 90.00 | 267.71 | 6804.00 | 1105.20 | -1105.71 | -959.76  | 40.4461199 | -104.7979083 | 0.00 |
| 8920.00  | 90.00 | 267.71 | 6804.00 | 1204.70 | -1109.71 | -1059.68 | 40.4461089 | -104.7982673 | 0.00 |
| 9020.00  | 90.00 | 267.71 | 6804.00 | 1304.19 | -1113.71 | -1159.60 | 40.4460979 | -104.7986262 | 0.00 |
| 9120.00  | 90.00 | 267.71 | 6804.00 | 1403.68 | -1117.71 | -1259.52 | 40.4460869 | -104.7989852 | 0.00 |
| 9220.00  | 90.00 | 267.71 | 6804.00 | 1503.18 | -1121.71 | -1359.44 | 40.4460760 | -104.7993442 | 0.00 |
| 9320.00  | 90.00 | 267.71 | 6804.00 | 1602.67 | -1125.70 | -1459.36 | 40.4460650 | -104.7997032 | 0.00 |
| 9420.00  | 90.00 | 267.71 | 6804.00 | 1702.17 | -1129.70 | -1559.28 | 40.4460540 | -104.8000622 | 0.00 |
| 9520.00  | 90.00 | 267.71 | 6804.00 | 1801.66 | -1133.70 | -1659.20 | 40.4460430 | -104.8004212 | 0.00 |
| 9620.00  | 90.00 | 267.71 | 6804.00 | 1901.16 | -1137.70 | -1759.12 | 40.4460320 | -104.8007802 | 0.00 |
| 9720.00  | 90.00 | 267.71 | 6804.00 | 2000.65 | -1141.70 | -1859.04 | 40.4460210 | -104.8011392 | 0.00 |
| 9820.00  | 90.00 | 267.71 | 6804.00 | 2100.15 | -1145.70 | -1958.96 | 40.4460100 | -104.8014982 | 0.00 |
| 9920.00  | 90.00 | 267.71 | 6804.00 | 2199.64 | -1149.70 | -2058.88 | 40.4459990 | -104.8018572 | 0.00 |
| 10020.00 | 90.00 | 267.71 | 6804.00 | 2299.14 | -1153.69 | -2158.80 | 40.4459880 | -104.8022162 | 0.00 |
| 10120.00 | 90.00 | 267.71 | 6804.00 | 2398.63 | -1157.69 | -2258.72 | 40.4459770 | -104.8025752 | 0.00 |
| 10220.00 | 90.00 | 267.71 | 6804.00 | 2498.13 | -1161.69 | -2358.64 | 40.4459660 | -104.8029342 | 0.00 |
| 10320.00 | 90.00 | 267.71 | 6804.00 | 2597.62 | -1165.69 | -2458.56 | 40.4459550 | -104.8032932 | 0.00 |
| 10420.00 | 90.00 | 267.71 | 6804.00 | 2697.12 | -1169.69 | -2558.48 | 40.4459440 | -104.8036522 | 0.00 |
| 10520.00 | 90.00 | 267.71 | 6804.00 | 2796.61 | -1173.69 | -2658.40 | 40.4459330 | -104.8040112 | 0.00 |
| 10620.00 | 90.00 | 267.71 | 6804.00 | 2896.11 | -1177.69 | -2758.32 | 40.4459220 | -104.8043702 | 0.00 |
| 10720.00 | 90.00 | 267.71 | 6804.00 | 2995.60 | -1181.68 | -2858.24 | 40.4459110 | -104.8047292 | 0.00 |
| 10820.00 | 90.00 | 267.71 | 6804.00 | 3095.10 | -1185.68 | -2958.16 | 40.4459000 | -104.8050881 | 0.00 |
| 10920.00 | 90.00 | 267.71 | 6804.00 | 3194.59 | -1189.68 | -3058.08 | 40.4458889 | -104.8054471 | 0.00 |
| 11020.00 | 90.00 | 267.71 | 6804.00 | 3294.09 | -1193.68 | -3158.00 | 40.4458779 | -104.8058061 | 0.00 |
| 11120.00 | 90.00 | 267.71 | 6804.00 | 3393.58 | -1197.68 | -3257.92 | 40.4458669 | -104.8061651 | 0.00 |
| 11220.00 | 90.00 | 267.71 | 6804.00 | 3493.08 | -1201.68 | -3357.84 | 40.4458559 | -104.8065241 | 0.00 |
| 11320.00 | 90.00 | 267.71 | 6804.00 | 3592.57 | -1205.68 | -3457.76 | 40.4458449 | -104.8068831 | 0.00 |
| 11420.00 | 90.00 | 267.71 | 6804.00 | 3692.06 | -1209.67 | -3557.68 | 40.4458339 | -104.8072421 | 0.00 |
| 11520.00 | 90.00 | 267.71 | 6804.00 | 3791.56 | -1213.67 | -3657.60 | 40.4458229 | -104.8076011 | 0.00 |
| 11620.00 | 90.00 | 267.71 | 6804.00 | 3891.05 | -1217.67 | -3757.52 | 40.4458119 | -104.8079601 | 0.00 |
| 11720.00 | 90.00 | 267.71 | 6804.00 | 3990.55 | -1221.67 | -3857.44 | 40.4458008 | -104.8083191 | 0.00 |
| 11820.00 | 90.00 | 267.71 | 6804.00 | 4090.04 | -1225.67 | -3957.36 | 40.4457898 | -104.8086781 | 0.00 |
| 11920.00 | 90.00 | 267.71 | 6804.00 | 4189.54 | -1229.67 | -4057.28 | 40.4457788 | -104.8090371 | 0.00 |
| 12020.00 | 90.00 | 267.71 | 6804.00 | 4289.03 | -1233.67 | -4157.20 | 40.4457678 | -104.8093961 | 0.00 |
| 12120.00 | 90.00 | 267.71 | 6804.00 | 4388.53 | -1237.66 | -4257.12 | 40.4457568 | -104.8097550 | 0.00 |
| 12220.00 | 90.00 | 267.71 | 6804.00 | 4488.02 | -1241.66 | -4357.04 | 40.4457457 | -104.8101140 | 0.00 |
| 12320.00 | 90.00 | 267.71 | 6804.00 | 4587.52 | -1245.66 | -4456.96 | 40.4457347 | -104.8104730 | 0.00 |
| 12420.00 | 90.00 | 267.71 | 6804.00 | 4687.01 | -1249.66 | -4556.88 | 40.4457237 | -104.8108320 | 0.00 |
| 12520.00 | 90.00 | 267.71 | 6804.00 | 4786.51 | -1253.66 | -4656.80 | 40.4457127 | -104.8111910 | 0.00 |
| 12620.00 | 90.00 | 267.71 | 6804.00 | 4886.00 | -1257.66 | -4756.72 | 40.4457016 | -104.8115500 | 0.00 |
| 12720.00 | 90.00 | 267.71 | 6804.00 | 4985.50 | -1261.66 | -4856.64 | 40.4456906 | -104.8119090 | 0.00 |
| 12820.00 | 90.00 | 267.71 | 6804.00 | 5084.99 | -1265.65 | -4956.56 | 40.4456796 | -104.8122680 | 0.00 |
| 12920.00 | 90.00 | 267.71 | 6804.00 | 5184.49 | -1269.65 | -5056.48 | 40.4456685 | -104.8126270 | 0.00 |
| 13020.00 | 90.00 | 267.71 | 6804.00 | 5283.98 | -1273.65 | -5156.40 | 40.4456575 | -104.8129860 | 0.00 |
| 13120.00 | 90.00 | 267.71 | 6804.00 | 5383.48 | -1277.65 | -5256.32 | 40.4456465 | -104.8133450 | 0.00 |
| 13220.00 | 90.00 | 267.71 | 6804.00 | 5482.97 | -1281.65 | -5356.24 | 40.4456354 | -104.8137039 | 0.00 |
| 13320.00 | 90.00 | 267.71 | 6804.00 | 5582.47 | -1285.65 | -5456.16 | 40.4456244 | -104.8140629 | 0.00 |

AG\_5N-31A-L\_REV-B.0\_PWP.1as

|          |       |        |         |          |          |           |            |              |      |
|----------|-------|--------|---------|----------|----------|-----------|------------|--------------|------|
| 13420.00 | 90.00 | 267.71 | 6804.00 | 5681.96  | -1289.65 | -5556.08  | 40.4456134 | -104.8144219 | 0.00 |
| 13520.00 | 90.00 | 267.71 | 6804.00 | 5781.46  | -1293.65 | -5656.00  | 40.4456023 | -104.8147809 | 0.00 |
| 13620.00 | 90.00 | 267.71 | 6804.00 | 5880.95  | -1297.64 | -5755.92  | 40.4455913 | -104.8151399 | 0.00 |
| 13720.00 | 90.00 | 267.71 | 6804.00 | 5980.44  | -1301.64 | -5855.84  | 40.4455802 | -104.8154989 | 0.00 |
| 13820.00 | 90.00 | 267.71 | 6804.00 | 6079.94  | -1305.64 | -5955.76  | 40.4455692 | -104.8158579 | 0.00 |
| 13920.00 | 90.00 | 267.71 | 6804.00 | 6179.43  | -1309.64 | -6055.68  | 40.4455582 | -104.8162169 | 0.00 |
| 14020.00 | 90.00 | 267.71 | 6804.00 | 6278.93  | -1313.64 | -6155.60  | 40.4455471 | -104.8165759 | 0.00 |
| 14120.00 | 90.00 | 267.71 | 6804.00 | 6378.42  | -1317.64 | -6255.52  | 40.4455361 | -104.8169349 | 0.00 |
| 14220.00 | 90.00 | 267.71 | 6804.00 | 6477.92  | -1321.64 | -6355.44  | 40.4455250 | -104.8172938 | 0.00 |
| 14320.00 | 90.00 | 267.71 | 6804.00 | 6577.41  | -1325.63 | -6455.36  | 40.4455140 | -104.8176528 | 0.00 |
| 14420.00 | 90.00 | 267.71 | 6804.00 | 6676.91  | -1329.63 | -6555.28  | 40.4455029 | -104.8180118 | 0.00 |
| 14520.00 | 90.00 | 267.71 | 6804.00 | 6776.40  | -1333.63 | -6655.20  | 40.4454919 | -104.8183708 | 0.00 |
| 14620.00 | 90.00 | 267.71 | 6804.00 | 6875.90  | -1337.63 | -6755.12  | 40.4454808 | -104.8187298 | 0.00 |
| 14720.00 | 90.00 | 267.71 | 6804.00 | 6975.39  | -1341.63 | -6855.04  | 40.4454698 | -104.8190888 | 0.00 |
| 14820.00 | 90.00 | 267.71 | 6804.00 | 7074.89  | -1345.63 | -6954.96  | 40.4454587 | -104.8194478 | 0.00 |
| 14920.00 | 90.00 | 267.71 | 6804.00 | 7174.38  | -1349.63 | -7054.88  | 40.4454477 | -104.8198068 | 0.00 |
| 15020.00 | 90.00 | 267.71 | 6804.00 | 7273.88  | -1353.62 | -7154.80  | 40.4454366 | -104.8201658 | 0.00 |
| 15120.00 | 90.00 | 267.71 | 6804.00 | 7373.37  | -1357.62 | -7254.72  | 40.4454256 | -104.8205247 | 0.00 |
| 15220.00 | 90.00 | 267.71 | 6804.00 | 7472.87  | -1361.62 | -7354.64  | 40.4454145 | -104.8208837 | 0.00 |
| 15320.00 | 90.00 | 267.71 | 6804.00 | 7572.36  | -1365.62 | -7454.56  | 40.4454035 | -104.8212427 | 0.00 |
| 15420.00 | 90.00 | 267.71 | 6804.00 | 7671.86  | -1369.62 | -7554.48  | 40.4453924 | -104.8216017 | 0.00 |
| 15520.00 | 90.00 | 267.71 | 6804.00 | 7771.35  | -1373.62 | -7654.40  | 40.4453813 | -104.8219607 | 0.00 |
| 15620.00 | 90.00 | 267.71 | 6804.00 | 7870.85  | -1377.62 | -7754.32  | 40.4453703 | -104.8223197 | 0.00 |
| 15720.00 | 90.00 | 267.71 | 6804.00 | 7970.34  | -1381.61 | -7854.24  | 40.4453592 | -104.8226787 | 0.00 |
| 15820.00 | 90.00 | 267.71 | 6804.00 | 8069.84  | -1385.61 | -7954.16  | 40.4453481 | -104.8230377 | 0.00 |
| 15920.00 | 90.00 | 267.71 | 6804.00 | 8169.33  | -1389.61 | -8054.08  | 40.4453371 | -104.8233966 | 0.00 |
| 16020.00 | 90.00 | 267.71 | 6804.00 | 8268.83  | -1393.61 | -8154.00  | 40.4453260 | -104.8237556 | 0.00 |
| 16120.00 | 90.00 | 267.71 | 6804.00 | 8368.32  | -1397.61 | -8253.92  | 40.4453149 | -104.8241146 | 0.00 |
| 16220.00 | 90.00 | 267.71 | 6804.00 | 8467.81  | -1401.61 | -8353.84  | 40.4453039 | -104.8244736 | 0.00 |
| 16320.00 | 90.00 | 267.71 | 6804.00 | 8567.31  | -1405.61 | -8453.76  | 40.4452928 | -104.8248326 | 0.00 |
| 16420.00 | 90.00 | 267.71 | 6804.00 | 8666.80  | -1409.60 | -8553.68  | 40.4452817 | -104.8251916 | 0.00 |
| 16520.00 | 90.00 | 267.71 | 6804.00 | 8766.30  | -1413.60 | -8653.60  | 40.4452707 | -104.8255506 | 0.00 |
| 16620.00 | 90.00 | 267.71 | 6804.00 | 8865.79  | -1417.60 | -8753.52  | 40.4452596 | -104.8259096 | 0.00 |
| 16720.00 | 90.00 | 267.71 | 6804.00 | 8965.29  | -1421.60 | -8853.44  | 40.4452485 | -104.8262685 | 0.00 |
| 16820.00 | 90.00 | 267.71 | 6804.00 | 9064.78  | -1425.60 | -8953.36  | 40.4452375 | -104.8266275 | 0.00 |
| 16920.00 | 90.00 | 267.71 | 6804.00 | 9164.28  | -1429.60 | -9053.28  | 40.4452264 | -104.8269865 | 0.00 |
| 17020.00 | 90.00 | 267.71 | 6804.00 | 9263.77  | -1433.60 | -9153.20  | 40.4452153 | -104.8273455 | 0.00 |
| 17120.00 | 90.00 | 267.71 | 6804.00 | 9363.27  | -1437.59 | -9253.12  | 40.4452042 | -104.8277045 | 0.00 |
| 17220.00 | 90.00 | 267.71 | 6804.00 | 9462.76  | -1441.59 | -9353.04  | 40.4451931 | -104.8280635 | 0.00 |
| 17320.00 | 90.00 | 267.71 | 6804.00 | 9562.26  | -1445.59 | -9452.96  | 40.4451821 | -104.8284225 | 0.00 |
| 17420.00 | 90.00 | 267.71 | 6804.00 | 9661.75  | -1449.59 | -9552.88  | 40.4451710 | -104.8287814 | 0.00 |
| 17520.00 | 90.00 | 267.71 | 6804.00 | 9761.25  | -1453.59 | -9652.80  | 40.4451599 | -104.8291404 | 0.00 |
| 17620.00 | 90.00 | 267.71 | 6804.00 | 9860.74  | -1457.59 | -9752.72  | 40.4451488 | -104.8294994 | 0.00 |
| 17720.00 | 90.00 | 267.71 | 6804.00 | 9960.24  | -1461.59 | -9852.64  | 40.4451377 | -104.8298584 | 0.00 |
| 17820.00 | 90.00 | 267.71 | 6804.00 | 10059.73 | -1465.58 | -9952.56  | 40.4451266 | -104.8302174 | 0.00 |
| 17920.00 | 90.00 | 267.71 | 6804.00 | 10159.23 | -1469.58 | -10052.48 | 40.4451156 | -104.8305764 | 0.00 |
| 18020.00 | 90.00 | 267.71 | 6804.00 | 10258.72 | -1473.58 | -10152.40 | 40.4451045 | -104.8309354 | 0.00 |
| 18120.00 | 90.00 | 267.71 | 6804.00 | 10358.22 | -1477.58 | -10252.32 | 40.4450934 | -104.8312943 | 0.00 |

|          |       |        |         |          |                             |           |            |              |      |  |
|----------|-------|--------|---------|----------|-----------------------------|-----------|------------|--------------|------|--|
|          |       |        |         |          | AG_5N-31A-L_REV-B.0_PWP.las |           |            |              |      |  |
| 18220.00 | 90.00 | 267.71 | 6804.00 | 10457.71 | -1481.58                    | -10352.24 | 40.4450823 | -104.8316533 | 0.00 |  |
| 18320.00 | 90.00 | 267.71 | 6804.00 | 10557.21 | -1485.58                    | -10452.16 | 40.4450712 | -104.8320123 | 0.00 |  |
| 18385.90 | 90.00 | 267.71 | 6804.00 | 10622.78 | -1488.21                    | -10518.01 | 40.4450639 | -104.8322489 | 0.00 |  |





# Planned Wellpath Report

AG 5N-31A-L REV-B.0 PWP

Page 1 of 10



## REFERENCE WELLPATH IDENTIFICATION

|          |                                |          |   |
|----------|--------------------------------|----------|---|
| Operator | SYNERGY RESOURCES CORPORATION  | Slot     | SLOT#10 AG 5N-31A-L (1008'FNL & 572'FEL SEC 32) |
| Area     | COLORADO                       | Well     | AG 5N-31A-L                                     |
| Field    | WELD COUNTY (NAD83,TRUE NORTH) | Wellbore | AG 5N-31A-L PWB                                 |
| Facility | SEC.32-T06N-R66W               |          |   |

## REPORT SETUP INFORMATION

|                     |   |                      |  |
|---------------------|---|----------------------|--|
| Projection System   | NAD83 / Lambert Colorado SP, Northern Zone (501), US feet | Software System      | WellArchitect® 5.0                             |
| North Reference     | True  | User                 | Wagnjam  |
| Scale               | 0.999963  | Report Generated     | 9/27/2016 at 11:54:29 AM                       |
| Convergence at slot | 0.46° East  | Database/Source file | WA_DEN_Denver_Defn/AG_5N-31A-L_REV-B.0_PWP.xml |

## WELLPATH LOCATION

|                       | Local coordinates |          | Grid coordinates |                 | Geographic coordinates |                 |
|-----------------------|-------------------|----------|------------------|-----------------|------------------------|-----------------|
|                       | North[ft]         | East[ft] | Easting[US ft]   | Northing[US ft] | Latitude               | Longitude       |
| Slot Location         | -131.86           | -122.46  | 3196355.65       | 1407248.66      | 40°26'56.958"N         | 104°47'40.056"W |
| Facility Reference Pt |                   |          | 3196477.05       | 1407381.48      | 40°26'58.261"N         | 104°47'38.472"W |
| Field Reference Pt    |                   |          | 3171284.48       | 1426358.81      | 40°30'07.643"N         | 104°53'02.634"W |

## WELLPATH DATUM

|                          |                           |   |                   |
|--------------------------|---------------------------|---|-------------------|
| Calculation method       | Minimum curvature         | PRECISION 462 (20') (RKB) to Facility Vertical Datum  | 4724.00ft         |
| Horizontal Reference Pt  | Slot                      | PRECISION 462 (20') (RKB) to Mean Sea Level   | 4724.00ft         |
| Vertical Reference Pt    | PRECISION 462 (20') (RKB) | PRECISION 462 (20') (RKB) to Mud Line at Slot (SLOT#10 AG 5N-31A-L (1008'FNL & 572'FEL SEC 32)) | 4724.00ft         |
| MD Reference Pt          | PRECISION 462 (20') (RKB) | Section Origin  | N 0.00, E 0.00 ft |
| Field Vertical Reference | Mean Sea Level            | Section Azimuth   | 261.95°           |



# Planned Wellpath Report

AG 5N-31A-L REV-B.0 PWP

Page 2 of 10



## REFERENCE WELLPATH IDENTIFICATION

|          |                                |          |   |
|----------|--------------------------------|----------|---|
| Operator | SYNERGY RESOURCES CORPORATION  | Slot     | SLOT#10 AG 5N-31A-L (1008'FNL & 572'FEL SEC 32) |
| Area     | COLORADO                       | Well     | AG 5N-31A-L                                     |
| Field    | WELD COUNTY (NAD83,TRUE NORTH) | Wellbore | AG 5N-31A-L PWB                                 |
| Facility | SEC.32-T06N-R66W               |          |   |

## WELLPATH DATA (192 stations) † = interpolated/extrapolated station

| MD<br>[ft] | Inclination<br>[°] | Azimuth<br>[°] | TVD<br>[ft] | Vert Sect<br>[ft] | North<br>[ft] | East<br>[ft] | DLS<br>[°/100ft] | Comments       |
|------------|--------------------|----------------|-------------|-------------------|---------------|--------------|------------------|----------------|
| 0.00†      | 0.000              | 128.638        | 0.00        | 0.00              | 0.00          | 0.00         | 0.00             |                |
| 20.00      | 0.000              | 128.638        | 20.00       | 0.00              | 0.00          | 0.00         | 0.00             | Tie On         |
| 120.00†    | 0.000              | 128.638        | 120.00      | 0.00              | 0.00          | 0.00         | 0.00             |                |
| 220.00†    | 0.000              | 128.638        | 220.00      | 0.00              | 0.00          | 0.00         | 0.00             |                |
| 300.00     | 0.000              | 128.638        | 300.00      | 0.00              | 0.00          | 0.00         | 0.00             | End of Tangent |
| 320.00†    | 0.400              | 128.638        | 320.00      | -0.05             | -0.04         | 0.05         | 2.00             |                |
| 420.00†    | 2.400              | 128.638        | 419.96      | -1.72             | -1.57         | 1.96         | 2.00             |                |
| 520.00†    | 4.400              | 128.638        | 519.78      | -5.79             | -5.27         | 6.60         | 2.00             |                |
| 620.00†    | 6.400              | 128.638        | 619.33      | -12.25            | -11.15        | 13.95        | 2.00             |                |
| 720.00†    | 8.400              | 128.638        | 718.50      | -21.08            | -19.19        | 24.01        | 2.00             |                |
| 820.00†    | 10.400             | 128.638        | 817.15      | -32.28            | -29.39        | 36.76        | 2.00             |                |
| 920.00†    | 12.400             | 128.638        | 915.17      | -45.84            | -41.73        | 52.20        | 2.00             |                |
| 1020.00†   | 14.400             | 128.638        | 1012.44     | -61.74            | -56.20        | 70.30        | 2.00             |                |
| 1043.58    | 14.872             | 128.638        | 1035.26     | -65.82            | -59.92        | 74.95        | 2.00             | End of Build   |
| 1120.00†   | 14.872             | 128.638        | 1109.12     | -79.28            | -72.16        | 90.28        | 0.00             |                |
| 1220.00†   | 14.872             | 128.638        | 1205.77     | -96.88            | -88.19        | 110.32       | 0.00             |                |
| 1320.00†   | 14.872             | 128.638        | 1302.42     | -114.48           | -104.22       | 130.37       | 0.00             |                |
| 1420.00†   | 14.872             | 128.638        | 1399.07     | -132.09           | -120.24       | 150.42       | 0.00             |                |
| 1520.00†   | 14.872             | 128.638        | 1495.72     | -149.69           | -136.27       | 170.46       | 0.00             |                |
| 1620.00†   | 14.872             | 128.638        | 1592.37     | -167.30           | -152.29       | 190.51       | 0.00             |                |
| 1720.00†   | 14.872             | 128.638        | 1689.02     | -184.90           | -168.32       | 210.56       | 0.00             |                |
| 1820.00†   | 14.872             | 128.638        | 1785.67     | -202.51           | -184.34       | 230.61       | 0.00             |                |
| 1920.00†   | 14.872             | 128.638        | 1882.32     | -220.11           | -200.37       | 250.65       | 0.00             |                |
| 2020.00†   | 14.872             | 128.638        | 1978.97     | -237.72           | -216.39       | 270.70       | 0.00             |                |
| 2120.00†   | 14.872             | 128.638        | 2075.62     | -255.32           | -232.42       | 290.75       | 0.00             |                |
| 2220.00†   | 14.872             | 128.638        | 2172.27     | -272.92           | -248.44       | 310.80       | 0.00             |                |
| 2320.00†   | 14.872             | 128.638        | 2268.92     | -290.53           | -264.47       | 330.84       | 0.00             |                |
| 2420.00†   | 14.872             | 128.638        | 2365.57     | -308.13           | -280.49       | 350.89       | 0.00             |                |
| 2520.00†   | 14.872             | 128.638        | 2462.22     | -325.74           | -296.52       | 370.94       | 0.00             |                |
| 2620.00†   | 14.872             | 128.638        | 2558.87     | -343.34           | -312.55       | 390.98       | 0.00             |                |



# Planned Wellpath Report

AG 5N-31A-L REV-B.0 PWP

Page 3 of 10



## REFERENCE WELLPATH IDENTIFICATION

|          |                                |          |   |
|----------|--------------------------------|----------|---|
| Operator | SYNERGY RESOURCES CORPORATION  | Slot     | SLOT#10 AG 5N-31A-L (1008'FNL & 572'FEL SEC 32) |
| Area     | COLORADO                       | Well     | AG 5N-31A-L                                     |
| Field    | WELD COUNTY (NAD83,TRUE NORTH) | Wellbore | AG 5N-31A-L PWB                                 |
| Facility | SEC.32-T06N-R66W               |          |   |

## WELLPATH DATA (192 stations) † = interpolated/extrapolated station

| MD<br>[ft] | Inclination<br>[°] | Azimuth<br>[°] | TVD<br>[ft] | Vert Sect<br>[ft] | North<br>[ft] | East<br>[ft] | DLS<br>[°/100ft] | Comments |
|------------|--------------------|----------------|-------------|-------------------|---------------|--------------|------------------|----------|
| 2720.00†   | 14.872             | 128.638        | 2655.52     | -360.95           | -328.57       | 411.03       | 0.00             |          |
| 2820.00†   | 14.872             | 128.638        | 2752.18     | -378.55           | -344.60       | 431.08       | 0.00             |          |
| 2920.00†   | 14.872             | 128.638        | 2848.83     | -396.16           | -360.62       | 451.13       | 0.00             |          |
| 3020.00†   | 14.872             | 128.638        | 2945.48     | -413.76           | -376.65       | 471.17       | 0.00             |          |
| 3120.00†   | 14.872             | 128.638        | 3042.13     | -431.36           | -392.67       | 491.22       | 0.00             |          |
| 3220.00†   | 14.872             | 128.638        | 3138.78     | -448.97           | -408.70       | 511.27       | 0.00             |          |
| 3320.00†   | 14.872             | 128.638        | 3235.43     | -466.57           | -424.72       | 531.32       | 0.00             |          |
| 3420.00†   | 14.872             | 128.638        | 3332.08     | -484.18           | -440.75       | 551.36       | 0.00             |          |
| 3520.00†   | 14.872             | 128.638        | 3428.73     | -501.78           | -456.77       | 571.41       | 0.00             |          |
| 3620.00†   | 14.872             | 128.638        | 3525.38     | -519.39           | -472.80       | 591.46       | 0.00             |          |
| 3720.00†   | 14.872             | 128.638        | 3622.03     | -536.99           | -488.82       | 611.50       | 0.00             |          |
| 3820.00†   | 14.872             | 128.638        | 3718.68     | -554.60           | -504.85       | 631.55       | 0.00             |          |
| 3920.00†   | 14.872             | 128.638        | 3815.33     | -572.20           | -520.88       | 651.60       | 0.00             |          |
| 4020.00†   | 14.872             | 128.638        | 3911.98     | -589.80           | -536.90       | 671.65       | 0.00             |          |
| 4120.00†   | 14.872             | 128.638        | 4008.63     | -607.41           | -552.93       | 691.69       | 0.00             |          |
| 4220.00†   | 14.872             | 128.638        | 4105.28     | -625.01           | -568.95       | 711.74       | 0.00             |          |
| 4320.00†   | 14.872             | 128.638        | 4201.93     | -642.62           | -584.98       | 731.79       | 0.00             |          |
| 4420.00†   | 14.872             | 128.638        | 4298.58     | -660.22           | -601.00       | 751.84       | 0.00             |          |
| 4520.00†   | 14.872             | 128.638        | 4395.23     | -677.83           | -617.03       | 771.88       | 0.00             |          |
| 4620.00†   | 14.872             | 128.638        | 4491.88     | -695.43           | -633.05       | 791.93       | 0.00             |          |
| 4720.00†   | 14.872             | 128.638        | 4588.53     | -713.04           | -649.08       | 811.98       | 0.00             |          |
| 4820.00†   | 14.872             | 128.638        | 4685.18     | -730.64           | -665.10       | 832.02       | 0.00             |          |
| 4920.00†   | 14.872             | 128.638        | 4781.83     | -748.24           | -681.13       | 852.07       | 0.00             |          |
| 5020.00†   | 14.872             | 128.638        | 4878.48     | -765.85           | -697.16       | 872.12       | 0.00             |          |
| 5120.00†   | 14.872             | 128.638        | 4975.13     | -783.45           | -713.18       | 892.17       | 0.00             |          |
| 5220.00†   | 14.872             | 128.638        | 5071.78     | -801.06           | -729.21       | 912.21       | 0.00             |          |
| 5320.00†   | 14.872             | 128.638        | 5168.43     | -818.66           | -745.23       | 932.26       | 0.00             |          |
| 5420.00†   | 14.872             | 128.638        | 5265.08     | -836.27           | -761.26       | 952.31       | 0.00             |          |
| 5520.00†   | 14.872             | 128.638        | 5361.74     | -853.87           | -777.28       | 972.36       | 0.00             |          |
| 5620.00†   | 14.872             | 128.638        | 5458.39     | -871.48           | -793.31       | 992.40       | 0.00             |          |



# Planned Wellpath Report

AG 5N-31A-L REV-B.0 PWP

Page 4 of 10



| REFERENCE WELLPATH IDENTIFICATION |                                |          |   |
|-----------------------------------|--------------------------------|----------|---|
| Operator                          | SYNERGY RESOURCES CORPORATION  | Slot     | SLOT#10 AG 5N-31A-L (1008'FNL & 572'FEL SEC 32) |
| Area                              | COLORADO                       | Well     | AG 5N-31A-L                                     |
| Field                             | WELD COUNTY (NAD83,TRUE NORTH) | Wellbore | AG 5N-31A-L PWB                                 |
| Facility                          | SEC.32-T06N-R66W               |          |   |

| WELLPATH DATA (192 stations) † = interpolated/extrapolated station |                    |                |                      |                   |               |              |                  |                |
|--|--------------------|----------------|----------------------|-------------------|---------------|--------------|------------------|----------------|
| MD<br>[ft]   | Inclination<br>[°] | Azimuth<br>[°] | TVD<br>[ft]          | Vert Sect<br>[ft] | North<br>[ft] | East<br>[ft] | DLS<br>[°/100ft] | Comments       |
| 5720.00†   | 14.872             | 128.638        | 5555.04              | -889.08           | -809.33       | 1012.45      | 0.00             |                |
| 5820.00†   | 14.872             | 128.638        | 5651.69              | -906.68           | -825.36       | 1032.50      | 0.00             |                |
| 5920.00†   | 14.872             | 128.638        | 5748.34              | -924.29           | -841.38       | 1052.54      | 0.00             |                |
| 6020.00†   | 14.872             | 128.638        | 5844.99              | -941.89           | -857.41       | 1072.59      | 0.00             |                |
| 6120.00†   | 14.872             | 128.638        | 5941.64              | -959.50           | -873.43       | 1092.64      | 0.00             |                |
| 6220.00†   | 14.872             | 128.638        | 6038.29              | -977.10           | -889.46       | 1112.69      | 0.00             |                |
| 6237.48  | 14.872             | 128.638        | 6055.18              | -980.18           | -892.26       | 1116.19      | 0.00             | End of Tangent |
| 6320.00†   | 10.552             | 156.760        | 6135.74              | -989.44           | -905.84       | 1127.46      | 9.00             |                |
| 6420.00†   | 11.164             | 205.886        | 6234.15              | -986.42           | -922.99       | 1126.84      | 9.00             |                |
| 6520.00†   | 17.272             | 233.686        | 6331.14              | -967.90           | -940.53       | 1110.62      | 9.00             |                |
| 6620.00†   | 25.147             | 245.956        | 6424.34              | -934.33           | -958.02       | 1079.19      | 9.00             |                |
| 6720.00†   | 33.566             | 252.509        | 6511.45              | -886.54           | -975.02       | 1033.33      | 9.00             |                |
| 6820.00†   | 42.204             | 256.648        | 6590.31              | -825.70           | -991.11       | 974.16       | 9.00             |                |
| 6920.00†   | 50.948             | 259.594        | 6658.99              | -753.31           | -1005.91      | 903.14       | 9.00             |                |
| 7020.00†   | 59.749             | 261.885        | 6715.80              | -671.15           | -1019.05      | 822.03       | 9.00             |                |
| 7024.40†   | 60.137             | 261.976        | 6718.00              | -667.35           | -1019.59      | 818.26       | 9.00             | SHARON SPRINGS |
| 7105.79†   | 67.327             | 263.541        | 6754.00              | -594.42           | -1028.75      | 745.90       | 9.00             | NIO-A          |
| 7120.00†   | 68.584             | 263.796        | 6759.33              | -581.25           | -1030.20      | 732.81       | 9.00             |                |
| 7220.00†   | 77.438             | 265.487        | 6788.52              | -485.83           | -1039.09      | 637.69       | 9.00             |                |
| 7320.00†   | 86.302             | 267.064        | 6802.65              | -387.22           | -1045.50      | 539.00       | 9.00             |                |
| 7361.71  | 90.000             | 267.708        | 6804.00 <sup>1</sup> | -345.72           | -1047.40      | 497.36       | 9.00             | End of 3D Arc  |
| 7420.00†   | 90.000             | 267.708        | 6804.00              | -287.73           | -1049.73      | 439.12       | 0.00             |                |
| 7520.00†   | 90.000             | 267.708        | 6804.00              | -188.23           | -1053.73      | 339.20       | 0.00             |                |
| 7620.00†   | 90.000             | 267.708        | 6804.00              | -88.74            | -1057.73      | 239.28       | 0.00             |                |
| 7720.00†   | 90.000             | 267.708        | 6804.00              | 10.76             | -1061.73      | 139.36       | 0.00             |                |
| 7820.00†   | 90.000             | 267.708        | 6804.00              | 110.25            | -1065.73      | 39.44        | 0.00             |                |
| 7920.00†   | 90.000             | 267.708        | 6804.00              | 209.75            | -1069.72      | -60.48       | 0.00             |                |
| 8020.00†   | 90.000             | 267.708        | 6804.00              | 309.24            | -1073.72      | -160.40      | 0.00             |                |
| 8120.00†   | 90.000             | 267.708        | 6804.00              | 408.74            | -1077.72      | -260.32      | 0.00             |                |
| 8220.00†   | 90.000             | 267.708        | 6804.00              | 508.23            | -1081.72      | -360.24      | 0.00             |                |



# Planned Wellpath Report

AG 5N-31A-L REV-B.0 PWP

Page 5 of 10



## REFERENCE WELLPATH IDENTIFICATION

|          |                                |          |   |
|----------|--------------------------------|----------|---|
| Operator | SYNERGY RESOURCES CORPORATION  | Slot     | SLOT#10 AG 5N-31A-L (1008'FNL & 572'FEL SEC 32) |
| Area     | COLORADO                       | Well     | AG 5N-31A-L                                     |
| Field    | WELD COUNTY (NAD83,TRUE NORTH) | Wellbore | AG 5N-31A-L PWB                                 |
| Facility | SEC.32-T06N-R66W               |          |   |

## WELLPATH DATA (192 stations) † = interpolated/extrapolated station

| MD<br>[ft] | Inclination<br>[°] | Azimuth<br>[°] | TVD<br>[ft] | Vert Sect<br>[ft] | North<br>[ft] | East<br>[ft] | DLS<br>[°/100ft] | Comments |
|------------|--------------------|----------------|-------------|-------------------|---------------|--------------|------------------|----------|
| 8320.00†   | 90.000             | 267.708        | 6804.00     | 607.73            | -1085.72      | -460.16      | 0.00             |          |
| 8420.00†   | 90.000             | 267.708        | 6804.00     | 707.22            | -1089.72      | -560.08      | 0.00             |          |
| 8520.00†   | 90.000             | 267.708        | 6804.00     | 806.72            | -1093.72      | -660.00      | 0.00             |          |
| 8620.00†   | 90.000             | 267.708        | 6804.00     | 906.21            | -1097.71      | -759.92      | 0.00             |          |
| 8720.00†   | 90.000             | 267.708        | 6804.00     | 1005.71           | -1101.71      | -859.84      | 0.00             |          |
| 8820.00†   | 90.000             | 267.708        | 6804.00     | 1105.20           | -1105.71      | -959.76      | 0.00             |          |
| 8920.00†   | 90.000             | 267.708        | 6804.00     | 1204.70           | -1109.71      | -1059.68     | 0.00             |          |
| 9020.00†   | 90.000             | 267.708        | 6804.00     | 1304.19           | -1113.71      | -1159.60     | 0.00             |          |
| 9120.00†   | 90.000             | 267.708        | 6804.00     | 1403.68           | -1117.71      | -1259.52     | 0.00             |          |
| 9220.00†   | 90.000             | 267.708        | 6804.00     | 1503.18           | -1121.71      | -1359.44     | 0.00             |          |
| 9320.00†   | 90.000             | 267.708        | 6804.00     | 1602.67           | -1125.70      | -1459.36     | 0.00             |          |
| 9420.00†   | 90.000             | 267.708        | 6804.00     | 1702.17           | -1129.70      | -1559.28     | 0.00             |          |
| 9520.00†   | 90.000             | 267.708        | 6804.00     | 1801.66           | -1133.70      | -1659.20     | 0.00             |          |
| 9620.00†   | 90.000             | 267.708        | 6804.00     | 1901.16           | -1137.70      | -1759.12     | 0.00             |          |
| 9720.00†   | 90.000             | 267.708        | 6804.00     | 2000.65           | -1141.70      | -1859.04     | 0.00             |          |
| 9820.00†   | 90.000             | 267.708        | 6804.00     | 2100.15           | -1145.70      | -1958.96     | 0.00             |          |
| 9920.00†   | 90.000             | 267.708        | 6804.00     | 2199.64           | -1149.70      | -2058.88     | 0.00             |          |
| 10020.00†  | 90.000             | 267.708        | 6804.00     | 2299.14           | -1153.69      | -2158.80     | 0.00             |          |
| 10120.00†  | 90.000             | 267.708        | 6804.00     | 2398.63           | -1157.69      | -2258.72     | 0.00             |          |
| 10220.00†  | 90.000             | 267.708        | 6804.00     | 2498.13           | -1161.69      | -2358.64     | 0.00             |          |
| 10320.00†  | 90.000             | 267.708        | 6804.00     | 2597.62           | -1165.69      | -2458.56     | 0.00             |          |
| 10420.00†  | 90.000             | 267.708        | 6804.00     | 2697.12           | -1169.69      | -2558.48     | 0.00             |          |
| 10520.00†  | 90.000             | 267.708        | 6804.00     | 2796.61           | -1173.69      | -2658.40     | 0.00             |          |
| 10620.00†  | 90.000             | 267.708        | 6804.00     | 2896.11           | -1177.69      | -2758.32     | 0.00             |          |
| 10720.00†  | 90.000             | 267.708        | 6804.00     | 2995.60           | -1181.68      | -2858.24     | 0.00             |          |
| 10820.00†  | 90.000             | 267.708        | 6804.00     | 3095.10           | -1185.68      | -2958.16     | 0.00             |          |
| 10920.00†  | 90.000             | 267.708        | 6804.00     | 3194.59           | -1189.68      | -3058.08     | 0.00             |          |
| 11020.00†  | 90.000             | 267.708        | 6804.00     | 3294.09           | -1193.68      | -3158.00     | 0.00             |          |
| 11120.00†  | 90.000             | 267.708        | 6804.00     | 3393.58           | -1197.68      | -3257.92     | 0.00             |          |
| 11220.00†  | 90.000             | 267.708        | 6804.00     | 3493.08           | -1201.68      | -3357.84     | 0.00             |          |



# Planned Wellpath Report

AG 5N-31A-L REV-B.0 PWP

Page 6 of 10



## REFERENCE WELLPATH IDENTIFICATION

|          |                                |          |   |
|----------|--------------------------------|----------|---|
| Operator | SYNERGY RESOURCES CORPORATION  | Slot     | SLOT#10 AG 5N-31A-L (1008'FNL & 572'FEL SEC 32) |
| Area     | COLORADO                       | Well     | AG 5N-31A-L                                     |
| Field    | WELD COUNTY (NAD83,TRUE NORTH) | Wellbore | AG 5N-31A-L PWB                                 |
| Facility | SEC.32-T06N-R66W               |          |   |

## WELLPATH DATA (192 stations) † = interpolated/extrapolated station

| MD<br>[ft] | Inclination<br>[°] | Azimuth<br>[°] | TVD<br>[ft] | Vert Sect<br>[ft] | North<br>[ft] | East<br>[ft] | DLS<br>[°/100ft] | Comments |
|------------|--------------------|----------------|-------------|-------------------|---------------|--------------|------------------|----------|
| 11320.00†  | 90.000             | 267.708        | 6804.00     | 3592.57           | -1205.68      | -3457.76     | 0.00             |          |
| 11420.00†  | 90.000             | 267.708        | 6804.00     | 3692.06           | -1209.67      | -3557.68     | 0.00             |          |
| 11520.00†  | 90.000             | 267.708        | 6804.00     | 3791.56           | -1213.67      | -3657.60     | 0.00             |          |
| 11620.00†  | 90.000             | 267.708        | 6804.00     | 3891.05           | -1217.67      | -3757.52     | 0.00             |          |
| 11720.00†  | 90.000             | 267.708        | 6804.00     | 3990.55           | -1221.67      | -3857.44     | 0.00             |          |
| 11820.00†  | 90.000             | 267.708        | 6804.00     | 4090.04           | -1225.67      | -3957.36     | 0.00             |          |
| 11920.00†  | 90.000             | 267.708        | 6804.00     | 4189.54           | -1229.67      | -4057.28     | 0.00             |          |
| 12020.00†  | 90.000             | 267.708        | 6804.00     | 4289.03           | -1233.67      | -4157.20     | 0.00             |          |
| 12120.00†  | 90.000             | 267.708        | 6804.00     | 4388.53           | -1237.66      | -4257.12     | 0.00             |          |
| 12220.00†  | 90.000             | 267.708        | 6804.00     | 4488.02           | -1241.66      | -4357.04     | 0.00             |          |
| 12320.00†  | 90.000             | 267.708        | 6804.00     | 4587.52           | -1245.66      | -4456.96     | 0.00             |          |
| 12420.00†  | 90.000             | 267.708        | 6804.00     | 4687.01           | -1249.66      | -4556.88     | 0.00             |          |
| 12520.00†  | 90.000             | 267.708        | 6804.00     | 4786.51           | -1253.66      | -4656.80     | 0.00             |          |
| 12620.00†  | 90.000             | 267.708        | 6804.00     | 4886.00           | -1257.66      | -4756.72     | 0.00             |          |
| 12720.00†  | 90.000             | 267.708        | 6804.00     | 4985.50           | -1261.66      | -4856.64     | 0.00             |          |
| 12820.00†  | 90.000             | 267.708        | 6804.00     | 5084.99           | -1265.65      | -4956.56     | 0.00             |          |
| 12920.00†  | 90.000             | 267.708        | 6804.00     | 5184.49           | -1269.65      | -5056.48     | 0.00             |          |
| 13020.00†  | 90.000             | 267.708        | 6804.00     | 5283.98           | -1273.65      | -5156.40     | 0.00             |          |
| 13120.00†  | 90.000             | 267.708        | 6804.00     | 5383.48           | -1277.65      | -5256.32     | 0.00             |          |
| 13220.00†  | 90.000             | 267.708        | 6804.00     | 5482.97           | -1281.65      | -5356.24     | 0.00             |          |
| 13320.00†  | 90.000             | 267.708        | 6804.00     | 5582.47           | -1285.65      | -5456.16     | 0.00             |          |
| 13420.00†  | 90.000             | 267.708        | 6804.00     | 5681.96           | -1289.65      | -5556.08     | 0.00             |          |
| 13520.00†  | 90.000             | 267.708        | 6804.00     | 5781.46           | -1293.65      | -5656.00     | 0.00             |          |
| 13620.00†  | 90.000             | 267.708        | 6804.00     | 5880.95           | -1297.64      | -5755.92     | 0.00             |          |
| 13720.00†  | 90.000             | 267.708        | 6804.00     | 5980.44           | -1301.64      | -5855.84     | 0.00             |          |
| 13820.00†  | 90.000             | 267.708        | 6804.00     | 6079.94           | -1305.64      | -5955.76     | 0.00             |          |
| 13920.00†  | 90.000             | 267.708        | 6804.00     | 6179.43           | -1309.64      | -6055.68     | 0.00             |          |
| 14020.00†  | 90.000             | 267.708        | 6804.00     | 6278.93           | -1313.64      | -6155.60     | 0.00             |          |
| 14120.00†  | 90.000             | 267.708        | 6804.00     | 6378.42           | -1317.64      | -6255.52     | 0.00             |          |
| 14220.00†  | 90.000             | 267.708        | 6804.00     | 6477.92           | -1321.64      | -6355.44     | 0.00             |          |





# Planned Wellpath Report

AG 5N-31A-L REV-B.0 PWP

Page 7 of 10



| REFERENCE WELLPATH IDENTIFICATION |                                |          |   |
|-----------------------------------|--------------------------------|----------|---|
| Operator                          | SYNERGY RESOURCES CORPORATION  | Slot     | SLOT#10 AG 5N-31A-L (1008'FNL & 572'FEL SEC 32) |
| Area                              | COLORADO                       | Well     | AG 5N-31A-L                                     |
| Field                             | WELD COUNTY (NAD83,TRUE NORTH) | Wellbore | AG 5N-31A-L PWB                                 |
| Facility                          | SEC.32-T06N-R66W               |          |   |

| WELLPATH DATA (192 stations) † = interpolated/extrapolated station |                    |                |             |                   |               |              |                  |          |
|--|--------------------|----------------|-------------|-------------------|---------------|--------------|------------------|----------|
| MD<br>[ft]   | Inclination<br>[°] | Azimuth<br>[°] | TVD<br>[ft] | Vert Sect<br>[ft] | North<br>[ft] | East<br>[ft] | DLS<br>[°/100ft] | Comments |
| 14320.00†  | 90.000             | 267.708        | 6804.00     | 6577.41           | -1325.63      | -6455.36     | 0.00             |          |
| 14420.00†  | 90.000             | 267.708        | 6804.00     | 6676.91           | -1329.63      | -6555.28     | 0.00             |          |
| 14520.00†  | 90.000             | 267.708        | 6804.00     | 6776.40           | -1333.63      | -6655.20     | 0.00             |          |
| 14620.00†  | 90.000             | 267.708        | 6804.00     | 6875.90           | -1337.63      | -6755.12     | 0.00             |          |
| 14720.00†  | 90.000             | 267.708        | 6804.00     | 6975.39           | -1341.63      | -6855.04     | 0.00             |          |
| 14820.00†  | 90.000             | 267.708        | 6804.00     | 7074.89           | -1345.63      | -6954.96     | 0.00             |          |
| 14920.00†  | 90.000             | 267.708        | 6804.00     | 7174.38           | -1349.63      | -7054.88     | 0.00             |          |
| 15020.00†  | 90.000             | 267.708        | 6804.00     | 7273.88           | -1353.62      | -7154.80     | 0.00             |          |
| 15120.00†  | 90.000             | 267.708        | 6804.00     | 7373.37           | -1357.62      | -7254.72     | 0.00             |          |
| 15220.00†  | 90.000             | 267.708        | 6804.00     | 7472.87           | -1361.62      | -7354.64     | 0.00             |          |
| 15320.00†  | 90.000             | 267.708        | 6804.00     | 7572.36           | -1365.62      | -7454.56     | 0.00             |          |
| 15420.00†  | 90.000             | 267.708        | 6804.00     | 7671.86           | -1369.62      | -7554.48     | 0.00             |          |
| 15520.00†  | 90.000             | 267.708        | 6804.00     | 7771.35           | -1373.62      | -7654.40     | 0.00             |          |
| 15620.00†  | 90.000             | 267.708        | 6804.00     | 7870.85           | -1377.62      | -7754.32     | 0.00             |          |
| 15720.00†  | 90.000             | 267.708        | 6804.00     | 7970.34           | -1381.61      | -7854.24     | 0.00             |          |
| 15820.00†  | 90.000             | 267.708        | 6804.00     | 8069.84           | -1385.61      | -7954.16     | 0.00             |          |
| 15920.00†  | 90.000             | 267.708        | 6804.00     | 8169.33           | -1389.61      | -8054.08     | 0.00             |          |
| 16020.00†  | 90.000             | 267.708        | 6804.00     | 8268.83           | -1393.61      | -8154.00     | 0.00             |          |
| 16120.00†  | 90.000             | 267.708        | 6804.00     | 8368.32           | -1397.61      | -8253.92     | 0.00             |          |
| 16220.00†  | 90.000             | 267.708        | 6804.00     | 8467.81           | -1401.61      | -8353.84     | 0.00             |          |
| 16320.00†  | 90.000             | 267.708        | 6804.00     | 8567.31           | -1405.61      | -8453.76     | 0.00             |          |
| 16420.00†  | 90.000             | 267.708        | 6804.00     | 8666.80           | -1409.60      | -8553.68     | 0.00             |          |
| 16520.00†  | 90.000             | 267.708        | 6804.00     | 8766.30           | -1413.60      | -8653.60     | 0.00             |          |
| 16620.00†  | 90.000             | 267.708        | 6804.00     | 8865.79           | -1417.60      | -8753.52     | 0.00             |          |
| 16720.00†  | 90.000             | 267.708        | 6804.00     | 8965.29           | -1421.60      | -8853.44     | 0.00             |          |
| 16820.00†  | 90.000             | 267.708        | 6804.00     | 9064.78           | -1425.60      | -8953.36     | 0.00             |          |
| 16920.00†  | 90.000             | 267.708        | 6804.00     | 9164.28           | -1429.60      | -9053.28     | 0.00             |          |
| 17020.00†  | 90.000             | 267.708        | 6804.00     | 9263.77           | -1433.60      | -9153.20     | 0.00             |          |
| 17120.00†  | 90.000             | 267.708        | 6804.00     | 9363.27           | -1437.59      | -9253.12     | 0.00             |          |
| 17220.00†  | 90.000             | 267.708        | 6804.00     | 9462.76           | -1441.59      | -9353.04     | 0.00             |          |



# Planned Wellpath Report

AG 5N-31A-L REV-B.0 PWP

Page 8 of 10



## REFERENCE WELLPATH IDENTIFICATION

|          |                                |          |   |
|----------|--------------------------------|----------|---|
| Operator | SYNERGY RESOURCES CORPORATION  | Slot     | SLOT#10 AG 5N-31A-L (1008'FNL & 572'FEL SEC 32) |
| Area     | COLORADO                       | Well     | AG 5N-31A-L                                     |
| Field    | WELD COUNTY (NAD83,TRUE NORTH) | Wellbore | AG 5N-31A-L PWB                                 |
| Facility | SEC.32-T06N-R66W               |          |   |

## WELLPATH DATA (192 stations) † = interpolated/extrapolated station

| MD [ft]   | Inclination [°] | Azimuth [°] | TVD [ft]             | Vert Sect [ft] | North [ft] | East [ft] | DLS [°/100ft] | Comments       |
|-----------|-----------------|-------------|----------------------|----------------|------------|-----------|---------------|----------------|
| 17320.00† | 90.000          | 267.708     | 6804.00              | 9562.26        | -1445.59   | -9452.96  | 0.00          |                |
| 17420.00† | 90.000          | 267.708     | 6804.00              | 9661.75        | -1449.59   | -9552.88  | 0.00          |                |
| 17520.00† | 90.000          | 267.708     | 6804.00              | 9761.25        | -1453.59   | -9652.80  | 0.00          |                |
| 17620.00† | 90.000          | 267.708     | 6804.00              | 9860.74        | -1457.59   | -9752.72  | 0.00          |                |
| 17720.00† | 90.000          | 267.708     | 6804.00              | 9960.24        | -1461.59   | -9852.64  | 0.00          |                |
| 17820.00† | 90.000          | 267.708     | 6804.00              | 10059.73       | -1465.58   | -9952.56  | 0.00          |                |
| 17920.00† | 90.000          | 267.708     | 6804.00              | 10159.23       | -1469.58   | -10052.48 | 0.00          |                |
| 18020.00† | 90.000          | 267.708     | 6804.00              | 10258.72       | -1473.58   | -10152.40 | 0.00          |                |
| 18120.00† | 90.000          | 267.708     | 6804.00              | 10358.22       | -1477.58   | -10252.32 | 0.00          |                |
| 18220.00† | 90.000          | 267.708     | 6804.00              | 10457.71       | -1481.58   | -10352.24 | 0.00          |                |
| 18320.00† | 90.000          | 267.708     | 6804.00              | 10557.21       | -1485.58   | -10452.16 | 0.00          |                |
| 18385.90  | 90.000          | 267.708     | 6804.00 <sup>2</sup> | 10622.78       | -1488.21   | -10518.01 | 0.00          | End of Tangent |

## HOLE & CASING SECTIONS - Ref Wellbore: AG 5N-31A-L PWB Ref Wellpath: AG 5N-31A-L REV-B.0 PWP

| String/Diameter  | Start MD [ft] | End MD [ft] | Interval [ft] | Start TVD [ft] | End TVD [ft] | Start N/S [ft] | Start E/W [ft] | End N/S [ft] | End E/W [ft] |
|------------------|---------------|-------------|---------------|----------------|--------------|----------------|----------------|--------------|--------------|
| 13.5in Open Hole | 20.00         | 1800.00     | 1780.00       | 20.00          | 1766.34      | 0.00           | 0.00           | -181.14      | 226.60       |
| 8.5in Open Hole  | 1800.00       | 18385.90    | 16585.90      | 1766.34        | 6804.00      | -181.14        | 226.60         | -1488.21     | -10518.01    |





# Planned Wellpath Report

AG 5N-31A-L REV-B.0 PWP

Page 9 of 10



## REFERENCE WELLPATH IDENTIFICATION

|          |                                |          |   |
|----------|--------------------------------|----------|---|
| Operator | SYNERGY RESOURCES CORPORATION  | Slot     | SLOT#10 AG 5N-31A-L (1008'FNL & 572'FEL SEC 32) |
| Area     | COLORADO                       | Well     | AG 5N-31A-L                                     |
| Field    | WELD COUNTY (NAD83,TRUE NORTH) | Wellbore | AG 5N-31A-L PWB                                 |
| Facility | SEC.32-T06N-R66W               |          |   |

## TARGETS

| Name   | MD<br>[ft] | TVD<br>[ft] | North<br>[ft] | East<br>[ft] | Grid East<br>[US ft] | Grid North<br>[US ft] | Latitude       | Longitude       | Shape   |
|--|------------|-------------|---------------|--------------|----------------------|-----------------------|----------------|-----------------|---------|
| SEC.31-T06N-R66W   |            | -20.00      | 131.86        | 122.46       | 3196477.05           | 1407381.48            | 40°26'58.261"N | 104°47'38.472"W | polygon |
| SEC.32-T06N-R66W   |            | -20.00      | 131.86        | 122.46       | 3196477.05           | 1407381.48            | 40°26'58.261"N | 104°47'38.472"W | polygon |
| 2) AG 5N-31A-L BHL REV-1 ON<br>PLAT (NIO-A, 2055'FNL &<br>75'FWL SEC 31) | 18385.90   | 6804.00     | -1488.21      | -10518.01    | 3185850.22           | 1405676.87            | 40°26'42.230"N | 104°49'56.096"W | circle  |
| 1) AG 5N-31A-L TOP OF PROD<br>(2068'FNL & 75'FEL SEC 32)                 | 7361.71    | 6804.00     | -1047.40      | 497.36       | 3196861.31           | 1406205.29            | 40°26'46.608"N | 104°47'33.623"W | circle  |

## SURVEY PROGRAM - Ref Wellbore: AG 5N-31A-L PWB Ref Wellpath: AG 5N-31A-L REV-B.0 PWP

| Start MD<br>[ft] | End MD<br>[ft] | Positional Uncertainty Model  | Log<br>Name/Comment | Wellbore           |
|------------------|----------------|---|---------------------|--------------------|
| 20.00            | 1800.00        | Custom BHI NaviTrak (Standard Rotating+Axial Corr) (Rockies 0.03Gt model) |                     | AG 5N-31A-L<br>PWB |
| 1800.00          | 18386.00       | Custom BHI AutoTrak Curve (Short) (Rockies 0.03Gt model)                  |                     | AG 5N-31A-L<br>PWB |



# Planned Wellpath Report

AG 5N-31A-L REV-B.0 PWP

Page 10 of 10



## REFERENCE WELLPATH IDENTIFICATION

|          |                                |          |   |
|----------|--------------------------------|----------|---|
| Operator | SYNERGY RESOURCES CORPORATION  | Slot     | SLOT#10 AG 5N-31A-L (1008'FNL & 572'FEL SEC 32) |
| Area     | COLORADO                       | Well     | AG 5N-31A-L                                     |
| Field    | WELD COUNTY (NAD83,TRUE NORTH) | Wellbore | AG 5N-31A-L PWB                                 |
| Facility | SEC.32-T06N-R66W               |          |   |

## WELLPATH COMMENTS

| MD<br>[ft] | Inclination<br>[°] | Azimuth<br>[°] | TVD<br>[ft] | Comment        |
|------------|--------------------|----------------|-------------|----------------|
| 7024.40    | 60.137             | 261.976        | 6718.00     | SHARON SPRINGS |
| 7105.79    | 67.327             | 263.541        | 6754.00     | NIO-A          |