



December 2, 2016

Mr. Matt Lepore, Director  
Colorado Oil and Gas Conservation Commission  
1120 Lincoln Street, Suite 801  
Denver, CO 80203

**RE: COGCC Rule 318A.e.: Proposed Wellbore Spacing Unit**

Ag 5C-31-L

6N-66W Sec. 31: S/2N/2

6N-66W Sec. 32: S/2N/2

407.1 Acres

6N-66W Sec. 33: SW/4NW/4

6N-67W Sec. 36: SE/4NE/4

Dear Mr. Lepore,

Synergy Resources Corporation (Synergy) is planning to drill the above referenced well in accordance with the provisions set out in COGCC Rule 318A.e. Synergy's proposed wellbore spacing unit consists of:

Ag 5C-31-L

6N-66W Sec. 31: S/2N/2

6N-66W Sec. 32: S/2N/2

407.1 Acres

6N-66W Sec. 33: SW/4NW/4

6N-67W Sec. 36: SE/4NE/4

Synergy is not the only owner within the proposed wellbore spacing unit and hereby certifies to the Director that a thirty day (30-day) notice has been given by certified mail to all owners in the proposed wellbore spacing unit, as required by COGCC Rule 318A.e. (6). Copies of the required notification letters are on file at Synergy's office. The required thirty (30) day notice period has elapsed absent the receipt by Synergy of any objection to their proposal by the owner(s) within the proposed spacing unit for the subject well. We have not received any objections to such well location or proposed spacing unit, therefore, Synergy Resources hereby requests the Director to approve the well.

Enclosed is the Proposed Spacing Unit Plat to assist in your review and approval of Synergy's proposed Application for Permit to Drill (APD) for Ag 5C-31-L well. Synergy respectfully requests the COGCC to review the enclosed information and approve the exception location waiver request per Surface Use Agreement and APD for Ag 5C-31-L.

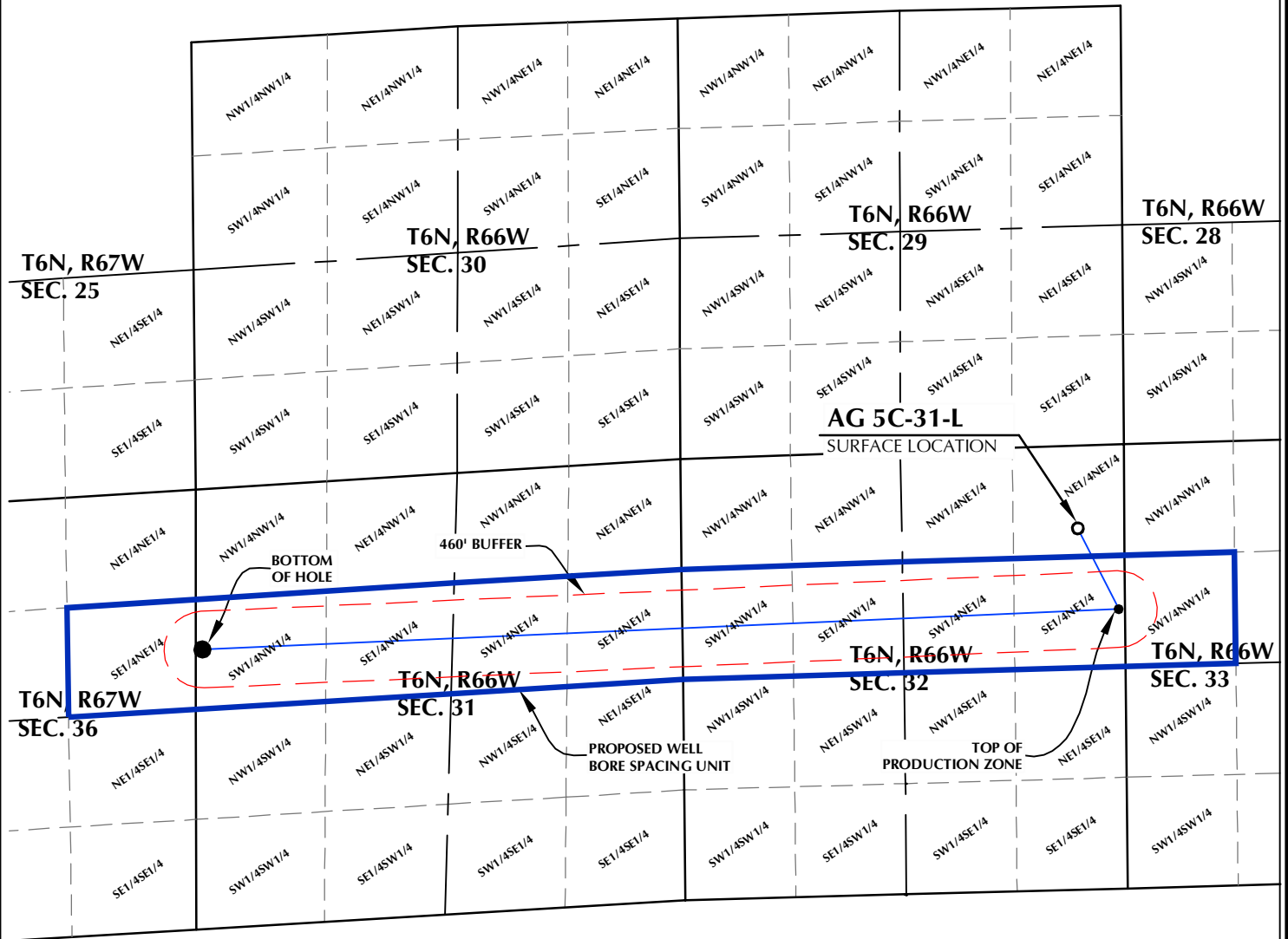
Thank you,

*Erin Ekblad*

Erin Ekblad  
Manager of Regulatory Affairs  
Synergy Resources Corporation

Attachment: Proposed Spacing Unit Plats

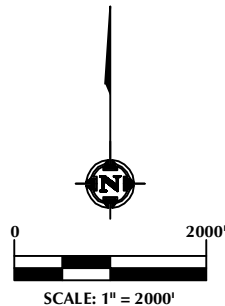
# AG 5C-31-L WELL BORE SPACING UNIT



**SURFACE LOCATION**  
GROUND ELEVATION= 4706.1'  
LATITUDE= 40.449196°  
LONGITUDE= -104.794411°  
1/4 1/4: NE1/4 NE1/4

**TOP OF PRODUCTION**  
LATITUDE= 40.446519°  
LONGITUDE= -104.792673°  
1/4 1/4: SE1/4 NE1/4

**BOTTOM HOLE LOCATION**  
LATITUDE= 40.445419°  
LONGITUDE= -104.832246°  
1/4 1/4: SW1/4 NW1/4



## NOTES:

1. DRAWING LATITUDE AND LONGITUDE COORDINATES ARE NAD 83 (2011)(EPOCH:2010)
2. ELEVATION BASED ON NAVD88 (GEOID12B)
3. BASIS OF BEARING DERIVED FROM COLORADO COORDINATE SYSTEM OF 1983 NORTH ZONE.
6. ALL MEASURED DISTANCES ARE GRID.
- COMBINED SCALE FACTOR: .99974032 CALCULATED FROM THE N. 1/4 CORNER OF SECTION 32, T6N, R66W

## WELL PAD - AG 26-32

AG 5C-31-L  
WELL BORE SPACING UNIT  
994' FNL & 558' FEL NENE (SURFACE)  
1981' FNL & 75' FEL SENE (TOP OF PRODUCTION)  
LOCATED IN SECTION 32  
1926' FNL & 75' FWL SWNW (BOTTOM)  
LOCATED IN SECTION 31  
T6N, R66W, 6TH P.M.  
WELD COUNTY, COLORADO

**SYNERGY**  
RESOURCES CORPORATION  
1625 Broadway, Suite 300  
Denver, Colorado 80202



## CONSULTING, LLC

**SHERIDAN OFFICE**  
1095 Saberton Avenue  
Sheridan, Wyoming 82801  
Phone 307-674-0609

**LOVELAND OFFICE**  
1635 Foxtrail Drive, Suite 204  
Loveland, Colorado 80538  
Phone 970-776-4331

DRAFTED BY:	LMO	CHECKED BY:	JRS
DATE DRAFTED:	8/11/16	DATE SURVEYED:	7/25/16
REVISED:	8/18/2016	FILE NAME:	16-76