

# SYNERGY RESOURCES CORPORATION

Location: COLORADO Slot: SLOT#09 AG 5C-31-L (994°FNL & 558°FEL SEC 32)  
Field: WELD COUNTY (NAD83, TRUE NORTH) Well: AG 5C-31-L  
Facility: SEC.32-T06N-R66W Wellbore: AG 5C-31-L PWB

Plot reference wellpath is AG 5C-31-L REV-B.0 PWB

|   |  |
|---|--|
| Grid System: NAD83 / Lambert Colorado SP, Northern Zone (501), US feet                      |  |
| True vertical depths are referenced to PRECISION 462 (20) (RKB)                             | * = Wellpath was transformed from a different geodetic datum |
| Measured depths are referenced to PRECISION 462 (20) (RKB)                                  | North Reference: True north                                  |
| PRECISION 462 (20) (RKB) to Mean Sea Level: 4724 feet                                       | Scale: True distance   |
| Mean Sea Level to Mud line (At Slot: SLOT#09 AG 5C-31-L (994°FNL & 558°FEL SEC 32)): 0 feet | Depths are in feet   |
| Coordinates are in feet referenced to Slot  | Created by: wagnjam on 2016-09-26                            |
|   | Database: WA_DEN_Denver_Defn                                 |

## Location Information

| Facility Name   |              |              | Grid East (US ft) | Grid North (US ft) | Latitude       | Longitude       |
|---|--------------|--------------|-------------------|--------------------|----------------|-----------------|
| SEC.32-T06N-R66W  |              |              | 3196477.049       | 1407381.484        | 40°26'58.261"N | 104°47'38.472"W |
| Slot  | Local N (ft) | Local E (ft) | Grid East (US ft) | Grid North (US ft) | Latitude       | Longitude       |
| SLOT#09 AG 5C-31-L (994FNL & 558FEL SEC 32)   | -116.88      | -108.85      | 3196369.134       | 1407263.741        | 40°26'57.106"N | 104°47'39.880"W |
| PRECISION 462 (20) (RKB) to Mud line (At Slot: SLOT#09 AG 5C-31-L (994FNL & 558FEL SEC 32)) |              |              |                   |                    | 4724ft         |                 |
| Mean Sea Level to Mud line (At Slot: SLOT#09 AG 5C-31-L (994FNL & 558FEL SEC 32))           |              |              |                   |                    | 0ft            |                 |
| PRECISION 462 (20) (RKB) to Mean Sea Level  |              |              |                   |                    | 4724ft         |                 |

## Wellpath Comments

| MD (ft) | X (ft)  | Y (ft)  | TVD (ft) | Inclination (°) | Azimuth (°) | VS (ft) | Comment        |
|---------|---------|---------|----------|-----------------|-------------|---------|----------------|
| 6893.83 | 1053.88 | -900.92 | 6718.00  | 27.253          | 250.780     | -928.47 | SHARON SPRINGS |
| 6935.00 | 1034.89 | -907.08 | 6754.00  | 30.776          | 253.154     | -908.85 | NIO-A          |
| 7089.06 | 944.02  | -928.91 | 6876.00  | 44.199          | 258.943     | -815.92 | NIO-B          |
| 7199.03 | 862.25  | -942.81 | 6948.00  | 53.897          | 261.569     | -733.04 | NIO-C          |
| 7401.64 | 683.85  | -963.25 | 7040.00  | 71.867          | 265.077     | -553.50 | FORT HAYS      |
| 7491.88 | 596.66  | -969.74 | 7062.00  | 79.890          | 266.376     | -466.19 | CODELL         |

## Well Profile Data

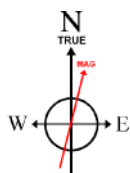
| Design Comment | MD (ft)  | Inc (°) | Az (°)  | TVD (ft) | Local N (ft) | Local E (ft) | DLS (°/100ft) | VS (ft)  |
|----------------|----------|---------|---------|----------|--------------|--------------|---------------|----------|
| Tie On         | 20.00    | 0.000   | 127.229 | 20.00    | 0.00         | 0.00         | 0.00          | 0.00     |
| End of Tangent | 200.00   | 0.000   | 127.229 | 200.00   | 0.00         | 0.00         | 0.00          | 0.00     |
| End of Build   | 874.16   | 13.483  | 127.229 | 867.95   | -47.77       | 62.87        | 2.00          | -56.16   |
| End of Tangent | 6490.02  | 13.483  | 127.229 | 6329.04  | -839.95      | 1105.44      | 0.00          | -987.49  |
| End of 3D Arc  | 7605.52  | 90.000  | 267.928 | 7072.00  | -975.35      | 483.75       | 9.00          | -353.51  |
| End of Tangent | 18627.27 | 90.000  | 267.928 | 7072.00  | -1373.85     | -10530.79    | 0.00          | 10620.03 |

## Targets

| Name  | MD (ft)  | TVD (ft) | Local N (ft) | Local E (ft) | Grid East (US ft) | Grid North (US ft) | Latitude       | Longitude       |
|---|----------|----------|--------------|--------------|-------------------|--------------------|----------------|-----------------|
| SEC.31-T06N-R66W  |          | -20.00   | 116.88       | 108.85       | 3196477.05        | 1407381.48         | 40°26'58.261"N | 104°47'38.472"W |
| SEC.32-T06N-R66W  |          | -20.00   | 116.88       | 108.85       | 3196477.05        | 1407381.48         | 40°26'58.261"N | 104°47'38.472"W |
| AG 5C-31-L BHL REV-1 ON PLAT (CDLL, 1926FNL & 75FWL SEC 31) | 18627.27 | 7072.00  | -1373.85     | -10530.79    | 3185850.02        | 1405806.20         | 40°26'43.508"N | 104°49'56.086"W |
| AG 5C-31-L TOP OF PROD (1981FNL & 75FEL SEC 32)             | 7605.52  | 7072.00  | -975.35      | 483.75       | 3196860.61        | 1406202.31         | 40°26'47.468"N | 104°47'33.623"W |

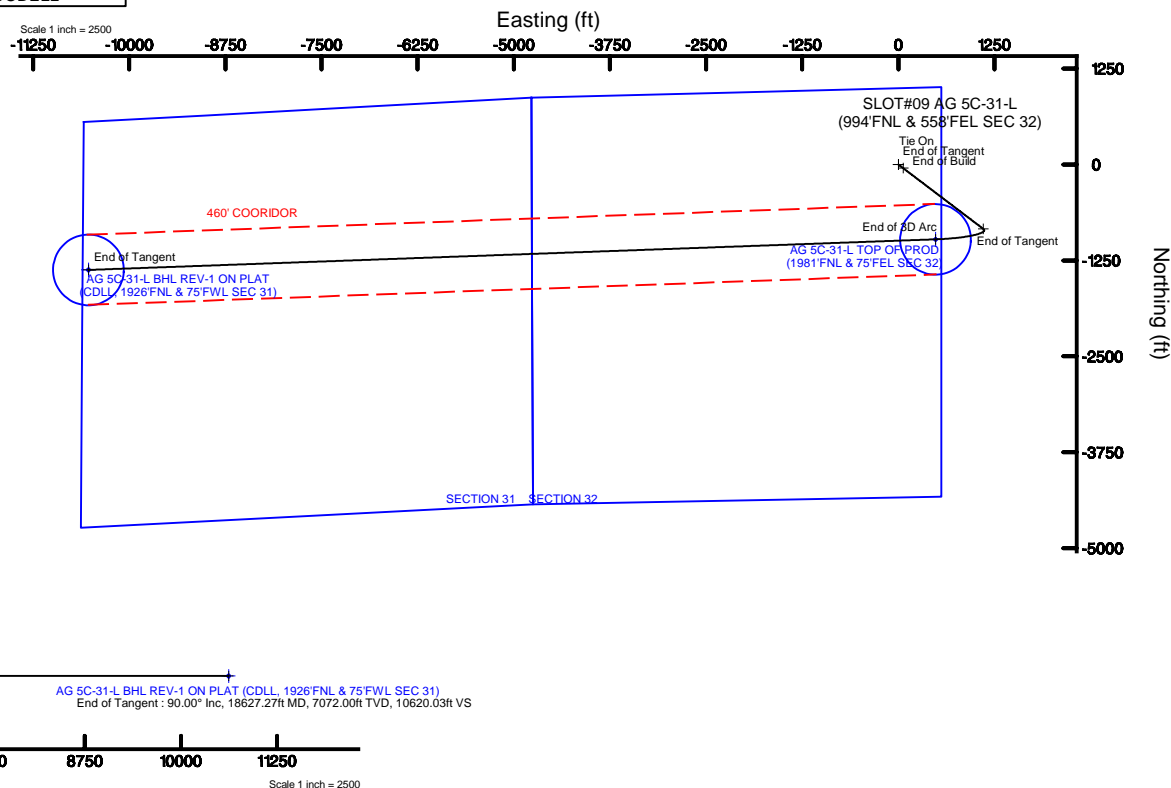
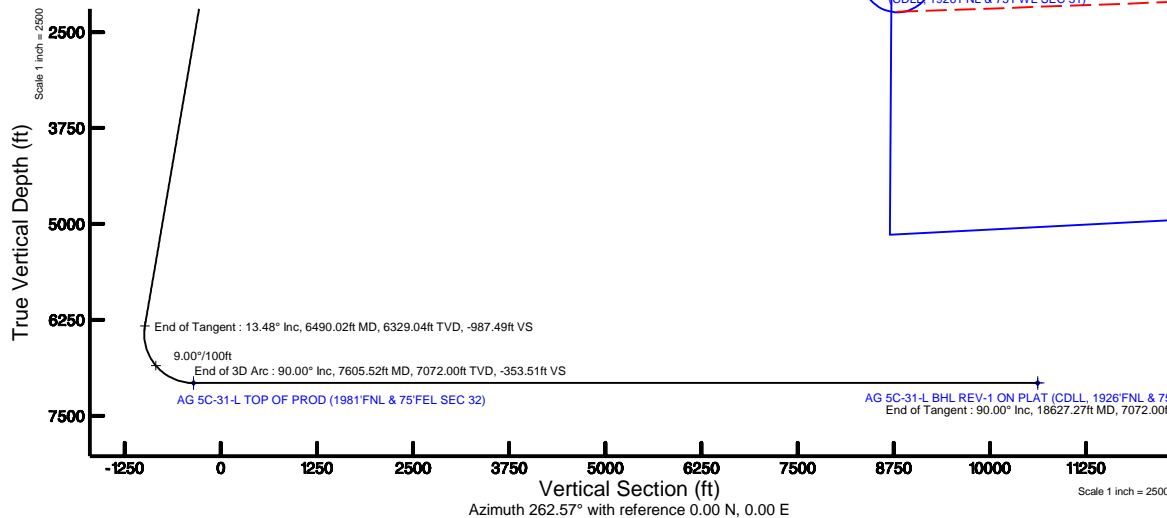
## Tie-On Position

| MD (ft) | Inc (°) | Az (°)  | TVD (ft) | Local N (ft) | Local E (ft) | Grid East (US ft) | Grid North (US ft) | Latitude       | Longitude       |
|---------|---------|---------|----------|--------------|--------------|-------------------|--------------------|----------------|-----------------|
| 20.00   | 0.000   | 127.229 | 20.00    | 0.00         | 0.00         | 3196369.13        | 1407263.74         | 40°26'57.106"N | 104°47'39.880"W |



BGGM (1900.0 to 2018.0) Dip: 66.93° Field: 52538.1 nT  
Magnetic North is 8.47 degrees East of True North (at 9/21/2016)

To correct azimuth from Magnetic to True add 8.47 degrees





# SYNERGY RESOURCES CORPORATION

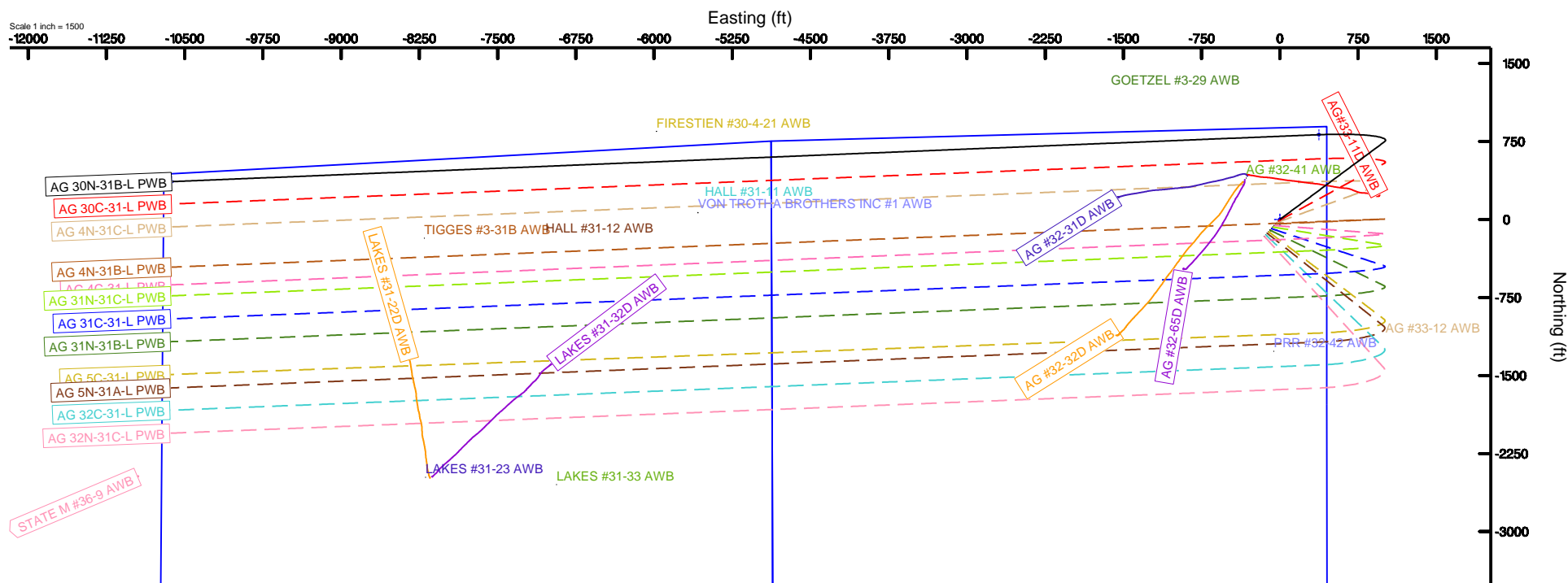
Location: COLORADO Slot: SLOT#01 AG 30N-31B-L (879FNL & 449FEL SEC 32)  
Field: WELD COUNTY (NAD83, TRUE NORTH) Well: AG 30N-31B-L  
Facility: SEC.32-T06N-R66W Wellbore: AG 30N-31B-L PWB



BGGM (1900.0 to 2018.0) Dip: 66.93° Field: 52538.1 nT  
Magnetic North is 8.47 degrees East of True North (at 9/21/2016)

To correct azimuth from Magnetic to True add 8.47 degrees

Scale 1 inch = 1500



# AG\_5C-31-L\_REV-B.0\_PWP.las

## ~VERSION INFORMATION

VERS. 2.0 : CWLS LOG ASCII STANDARD-VERSION 2.0  
 WRAP. NO : ASCII DATA SECTION CONTAINS ONE ROW PER WELLPATH STATION

## ~WELL INFORMATION

| #MNEM | .UNITS | DATA                           | :DESCRIPTION                  |
|-------|--------|--------------------------------|-------------------------------|
| #---- | .----- | ----                           | :-----                        |
| STRT  | .ft    | 0.00                           | :START MD                     |
| STOP  | .ft    | 18627.27                       | :STOP MD                      |
| STEP  | .ft    | 0.0                            | :STEP (non-uniform increment) |
| NULL  | .      | -999.99                        | :NULL                         |
| COMP  | .      | SYNERGY RESOURCES CORPORATION  | :OPERATOR                     |
| WELL  | .      | AG 5C-31-L                     | :WELL                         |
| FLD   | .      | WELD COUNTY (NAD83,TRUE NORTH) | :FIELD                        |
| LOC   | .      | COLORADO                       | :AREA (aka: Location)         |
| CNTY  | .      | N/A                            | :COUNTY                       |
| STAT  | .      | N/A                            | :STATE                        |
| CTRY  | .      | N/A                            | :COUNTRY                      |
| SRVC  | .      | Baker Hughes                   | :CONTRACTOR                   |
| DATE  | .      | 09/21/2016                     | :LOG REV DATE                 |
| API   | .      |                                | :API NUMBER                   |

## ~OTHER INFORMATION

#Software: WellArchitect(R) Version 5.0

| #MNEM     | .UNITS | DATA  | :DESCRIPTION                   |
|-----------|--------|---|--------------------------------|
| #----     | .----- | ----  | :-----                         |
| WPTYPE    | .      | PLANNED WELLPATH                              | :WELLPATH TYPE                 |
| FACILITY  | .      | SEC.32-T06N-R66W                              | :FACILITY                      |
| SLOT      | .      | SLOT#09 AG 5C-31-L (994'FNL & 558'FEL SEC 32) | :SLOT                          |
| WELLBORE  | .      | AG 5C-31-L PWB                                | :WELLBORE                      |
| WELLPATH  | .      | AG 5C-31-L REV-B.0 PWP                        | :WELLPATH                      |
| MDREFPT   | .      | PRECISION 462 (20') (RKB)                     | :MD REFERENCE POINT            |
| TVDREFPT  | .      | PRECISION 462 (20') (RKB)                     | :TVD REFERENCE POINT           |
| LCLREFPT  | .      | SLOT  | :LOCAL COORDINATE REFERENCE PT |
| VSAZIMUTH | .deg   | 262.57  | :VERTICAL SECTION AZIMUTH      |
| VSORIGN   | .ft    | 0.00  | :VERTICAL SECTION ORIGIN NORTH |
| VSORIGE   | .ft    | 0.00  | :VERTICAL SECTION ORIGIN EAST  |

## ~CURVE (WELLPATH) INFORMATION

| #MNEM  | .UNITS | :DESCRIPTION                      |
|--------|--------|-----------------------------------|
| #----  | .----- | :-----                            |
| DEPT   | .ft    | :MEASURED DEPTH                   |
| INC    | .deg   | :INCLINATION                      |
| AZI    | .deg   | :AZIMUTH                          |
| TVD    | .ft    | :TRUE VERTICAL DEPTH              |
| SECT   | .ft    | :CROSS SECTION (CURTAIN/VERTICAL) |
| LOCALN | .ft    | :LOCAL NORTH                      |
| LOCALE | .ft    | :LOCAL EAST                       |

## AG\_5C-31-L\_REV-B.0\_PWP.1as

LAT .deg :LATITUDE  
 LONG .deg :LONGITUDE  
 DLS .deg/100ft :DOGLEG SEVERITY

## ~ASCII DATA

|         |       |        |         |         |         |        |            |              |      |
|---------|-------|--------|---------|---------|---------|--------|------------|--------------|------|
| 0.00    | 0.00  | 127.23 | 0.00    | 0.00    | 0.00    | 0.00   | 40.4491961 | -104.7944111 | 0.00 |
| 20.00   | 0.00  | 127.23 | 20.00   | 0.00    | 0.00    | 0.00   | 40.4491961 | -104.7944111 | 0.00 |
| 120.00  | 0.00  | 127.23 | 120.00  | 0.00    | 0.00    | 0.00   | 40.4491961 | -104.7944111 | 0.00 |
| 200.00  | 0.00  | 127.23 | 200.00  | 0.00    | 0.00    | 0.00   | 40.4491961 | -104.7944111 | 0.00 |
| 220.00  | 0.40  | 127.23 | 220.00  | -0.05   | -0.04   | 0.06   | 40.4491960 | -104.7944109 | 2.00 |
| 320.00  | 2.40  | 127.23 | 319.96  | -1.79   | -1.52   | 2.00   | 40.4491919 | -104.7944039 | 2.00 |
| 420.00  | 4.40  | 127.23 | 419.78  | -6.01   | -5.11   | 6.72   | 40.4491821 | -104.7943870 | 2.00 |
| 520.00  | 6.40  | 127.23 | 519.33  | -12.70  | -10.80  | 14.22  | 40.4491665 | -104.7943600 | 2.00 |
| 620.00  | 8.40  | 127.23 | 618.50  | -21.86  | -18.59  | 24.47  | 40.4491451 | -104.7943232 | 2.00 |
| 720.00  | 10.40 | 127.23 | 717.15  | -33.48  | -28.47  | 37.47  | 40.4491180 | -104.7942765 | 2.00 |
| 820.00  | 12.40 | 127.23 | 815.17  | -47.53  | -40.43  | 53.21  | 40.4490851 | -104.7942199 | 2.00 |
| 874.16  | 13.48 | 127.23 | 867.95  | -56.16  | -47.77  | 62.87  | 40.4490650 | -104.7941852 | 2.00 |
| 920.00  | 13.48 | 127.23 | 912.53  | -63.76  | -54.24  | 71.38  | 40.4490472 | -104.7941546 | 0.00 |
| 1020.00 | 13.48 | 127.23 | 1009.78 | -80.35  | -68.34  | 89.94  | 40.4490085 | -104.7940879 | 0.00 |
| 1120.00 | 13.48 | 127.23 | 1107.02 | -96.93  | -82.45  | 108.51 | 40.4489698 | -104.7940212 | 0.00 |
| 1220.00 | 13.48 | 127.23 | 1204.26 | -113.51 | -96.55  | 127.07 | 40.4489311 | -104.7939545 | 0.00 |
| 1320.00 | 13.48 | 127.23 | 1301.51 | -130.10 | -110.66 | 145.64 | 40.4488924 | -104.7938878 | 0.00 |
| 1420.00 | 13.48 | 127.23 | 1398.75 | -146.68 | -124.77 | 164.20 | 40.4488536 | -104.7938211 | 0.00 |
| 1520.00 | 13.48 | 127.23 | 1495.99 | -163.27 | -138.87 | 182.77 | 40.4488149 | -104.7937544 | 0.00 |
| 1620.00 | 13.48 | 127.23 | 1593.24 | -179.85 | -152.98 | 201.33 | 40.4487762 | -104.7936877 | 0.00 |
| 1720.00 | 13.48 | 127.23 | 1690.48 | -196.43 | -167.09 | 219.90 | 40.4487375 | -104.7936210 | 0.00 |
| 1820.00 | 13.48 | 127.23 | 1787.73 | -213.02 | -181.19 | 238.46 | 40.4486988 | -104.7935543 | 0.00 |
| 1920.00 | 13.48 | 127.23 | 1884.97 | -229.60 | -195.30 | 257.03 | 40.4486600 | -104.7934876 | 0.00 |
| 2020.00 | 13.48 | 127.23 | 1982.21 | -246.19 | -209.40 | 275.59 | 40.4486213 | -104.7934209 | 0.00 |
| 2120.00 | 13.48 | 127.23 | 2079.46 | -262.77 | -223.51 | 294.16 | 40.4485826 | -104.7933542 | 0.00 |
| 2220.00 | 13.48 | 127.23 | 2176.70 | -279.35 | -237.62 | 312.72 | 40.4485439 | -104.7932875 | 0.00 |
| 2320.00 | 13.48 | 127.23 | 2273.95 | -295.94 | -251.72 | 331.28 | 40.4485052 | -104.7932208 | 0.00 |
| 2420.00 | 13.48 | 127.23 | 2371.19 | -312.52 | -265.83 | 349.85 | 40.4484664 | -104.7931541 | 0.00 |
| 2520.00 | 13.48 | 127.23 | 2468.43 | -329.10 | -279.93 | 368.41 | 40.4484277 | -104.7930874 | 0.00 |
| 2620.00 | 13.48 | 127.23 | 2565.68 | -345.69 | -294.04 | 386.98 | 40.4483890 | -104.7930207 | 0.00 |
| 2720.00 | 13.48 | 127.23 | 2662.92 | -362.27 | -308.15 | 405.54 | 40.4483503 | -104.7929540 | 0.00 |
| 2820.00 | 13.48 | 127.23 | 2760.16 | -378.86 | -322.25 | 424.11 | 40.4483116 | -104.7928873 | 0.00 |
| 2920.00 | 13.48 | 127.23 | 2857.41 | -395.44 | -336.36 | 442.67 | 40.4482728 | -104.7928206 | 0.00 |
| 3020.00 | 13.48 | 127.23 | 2954.65 | -412.02 | -350.46 | 461.24 | 40.4482341 | -104.7927539 | 0.00 |
| 3120.00 | 13.48 | 127.23 | 3051.90 | -428.61 | -364.57 | 479.80 | 40.4481954 | -104.7926872 | 0.00 |
| 3220.00 | 13.48 | 127.23 | 3149.14 | -445.19 | -378.68 | 498.37 | 40.4481567 | -104.7926205 | 0.00 |
| 3320.00 | 13.48 | 127.23 | 3246.38 | -461.78 | -392.78 | 516.93 | 40.4481180 | -104.7925538 | 0.00 |
| 3420.00 | 13.48 | 127.23 | 3343.63 | -478.36 | -406.89 | 535.50 | 40.4480792 | -104.7924871 | 0.00 |
| 3520.00 | 13.48 | 127.23 | 3440.87 | -494.94 | -421.00 | 554.06 | 40.4480405 | -104.7924204 | 0.00 |
| 3620.00 | 13.48 | 127.23 | 3538.12 | -511.53 | -435.10 | 572.63 | 40.4480018 | -104.7923537 | 0.00 |
| 3720.00 | 13.48 | 127.23 | 3635.36 | -528.11 | -449.21 | 591.19 | 40.4479631 | -104.7922870 | 0.00 |
| 3820.00 | 13.48 | 127.23 | 3732.60 | -544.69 | -463.31 | 609.75 | 40.4479244 | -104.7922203 | 0.00 |
| 3920.00 | 13.48 | 127.23 | 3829.85 | -561.28 | -477.42 | 628.32 | 40.4478856 | -104.7921536 | 0.00 |

AG\_5C-31-L\_REV-B.0\_PWP.las

|         |       |        |         |         |          |         |            |              |      |
|---------|-------|--------|---------|---------|----------|---------|------------|--------------|------|
| 4020.00 | 13.48 | 127.23 | 3927.09 | -577.86 | -491.53  | 646.88  | 40.4478469 | -104.7920869 | 0.00 |
| 4120.00 | 13.48 | 127.23 | 4024.34 | -594.45 | -505.63  | 665.45  | 40.4478082 | -104.7920202 | 0.00 |
| 4220.00 | 13.48 | 127.23 | 4121.58 | -611.03 | -519.74  | 684.01  | 40.4477695 | -104.7919535 | 0.00 |
| 4320.00 | 13.48 | 127.23 | 4218.82 | -627.61 | -533.84  | 702.58  | 40.4477307 | -104.7918868 | 0.00 |
| 4420.00 | 13.48 | 127.23 | 4316.07 | -644.20 | -547.95  | 721.14  | 40.4476920 | -104.7918201 | 0.00 |
| 4520.00 | 13.48 | 127.23 | 4413.31 | -660.78 | -562.06  | 739.71  | 40.4476533 | -104.7917534 | 0.00 |
| 4620.00 | 13.48 | 127.23 | 4510.55 | -677.37 | -576.16  | 758.27  | 40.4476146 | -104.7916867 | 0.00 |
| 4720.00 | 13.48 | 127.23 | 4607.80 | -693.95 | -590.27  | 776.84  | 40.4475759 | -104.7916200 | 0.00 |
| 4820.00 | 13.48 | 127.23 | 4705.04 | -710.53 | -604.37  | 795.40  | 40.4475371 | -104.7915533 | 0.00 |
| 4920.00 | 13.48 | 127.23 | 4802.29 | -727.12 | -618.48  | 813.97  | 40.4474984 | -104.7914866 | 0.00 |
| 5020.00 | 13.48 | 127.23 | 4899.53 | -743.70 | -632.59  | 832.53  | 40.4474597 | -104.7914199 | 0.00 |
| 5120.00 | 13.48 | 127.23 | 4996.77 | -760.29 | -646.69  | 851.10  | 40.4474210 | -104.7913532 | 0.00 |
| 5220.00 | 13.48 | 127.23 | 5094.02 | -776.87 | -660.80  | 869.66  | 40.4473823 | -104.7912865 | 0.00 |
| 5320.00 | 13.48 | 127.23 | 5191.26 | -793.45 | -674.91  | 888.23  | 40.4473435 | -104.7912198 | 0.00 |
| 5420.00 | 13.48 | 127.23 | 5288.51 | -810.04 | -689.01  | 906.79  | 40.4473048 | -104.7911531 | 0.00 |
| 5520.00 | 13.48 | 127.23 | 5385.75 | -826.62 | -703.12  | 925.35  | 40.4472661 | -104.7910864 | 0.00 |
| 5620.00 | 13.48 | 127.23 | 5482.99 | -843.20 | -717.22  | 943.92  | 40.4472274 | -104.7910197 | 0.00 |
| 5720.00 | 13.48 | 127.23 | 5580.24 | -859.79 | -731.33  | 962.48  | 40.4471886 | -104.7909530 | 0.00 |
| 5820.00 | 13.48 | 127.23 | 5677.48 | -876.37 | -745.44  | 981.05  | 40.4471499 | -104.7908863 | 0.00 |
| 5920.00 | 13.48 | 127.23 | 5774.72 | -892.96 | -759.54  | 999.61  | 40.4471112 | -104.7908196 | 0.00 |
| 6020.00 | 13.48 | 127.23 | 5871.97 | -909.54 | -773.65  | 1018.18 | 40.4470725 | -104.7907529 | 0.00 |
| 6120.00 | 13.48 | 127.23 | 5969.21 | -926.12 | -787.75  | 1036.74 | 40.4470338 | -104.7906862 | 0.00 |
| 6220.00 | 13.48 | 127.23 | 6066.46 | -942.71 | -801.86  | 1055.31 | 40.4469950 | -104.7906195 | 0.00 |
| 6320.00 | 13.48 | 127.23 | 6163.70 | -959.29 | -815.97  | 1073.87 | 40.4469563 | -104.7905528 | 0.00 |
| 6420.00 | 13.48 | 127.23 | 6260.94 | -975.88 | -830.07  | 1092.44 | 40.4469176 | -104.7904861 | 0.00 |
| 6490.02 | 13.48 | 127.23 | 6329.04 | -987.49 | -839.95  | 1105.44 | 40.4468905 | -104.7904394 | 0.00 |
| 6520.00 | 11.55 | 135.94 | 6358.30 | -991.76 | -844.22  | 1110.31 | 40.4468788 | -104.7904219 | 9.00 |
| 6620.00 | 8.73  | 186.55 | 6456.91 | -995.91 | -858.99  | 1116.41 | 40.4468382 | -104.7904000 | 9.00 |
| 6720.00 | 13.41 | 228.37 | 6555.17 | -984.46 | -874.26  | 1106.86 | 40.4467963 | -104.7904343 | 9.00 |
| 6820.00 | 21.08 | 244.73 | 6650.66 | -957.69 | -889.68  | 1081.88 | 40.4467540 | -104.7905241 | 9.00 |
| 6920.00 | 29.49 | 252.35 | 6741.02 | -916.27 | -904.85  | 1042.08 | 40.4467123 | -104.7906671 | 9.00 |
| 7020.00 | 38.15 | 256.78 | 6824.04 | -861.21 | -919.41  | 988.45  | 40.4466724 | -104.7908597 | 9.00 |
| 7120.00 | 46.92 | 259.76 | 6897.66 | -793.86 | -932.99  | 922.31  | 40.4466351 | -104.7910974 | 9.00 |
| 7220.00 | 55.75 | 261.99 | 6960.08 | -715.90 | -945.26  | 845.28  | 40.4466015 | -104.7913741 | 9.00 |
| 7320.00 | 64.62 | 263.80 | 7009.75 | -629.23 | -955.92  | 759.27  | 40.4465722 | -104.7916832 | 9.00 |
| 7420.00 | 73.50 | 265.35 | 7045.46 | -535.99 | -964.71  | 666.39  | 40.4465481 | -104.7920169 | 9.00 |
| 7520.00 | 82.39 | 266.77 | 7066.33 | -438.48 | -971.40  | 568.93  | 40.4465297 | -104.7923670 | 9.00 |
| 7605.52 | 90.00 | 267.93 | 7072.00 | -353.51 | -975.35  | 483.75  | 40.4465189 | -104.7926731 | 9.00 |
| 7620.00 | 90.00 | 267.93 | 7072.00 | -339.09 | -975.87  | 469.28  | 40.4465175 | -104.7927251 | 0.00 |
| 7720.00 | 90.00 | 267.93 | 7072.00 | -239.53 | -979.49  | 369.35  | 40.4465075 | -104.7930841 | 0.00 |
| 7820.00 | 90.00 | 267.93 | 7072.00 | -139.97 | -983.10  | 269.41  | 40.4464976 | -104.7934432 | 0.00 |
| 7920.00 | 90.00 | 267.93 | 7072.00 | -40.41  | -986.72  | 169.48  | 40.4464877 | -104.7938022 | 0.00 |
| 8020.00 | 90.00 | 267.93 | 7072.00 | 59.16   | -990.33  | 69.54   | 40.4464778 | -104.7941613 | 0.00 |
| 8120.00 | 90.00 | 267.93 | 7072.00 | 158.72  | -993.95  | -30.39  | 40.4464678 | -104.7945203 | 0.00 |
| 8220.00 | 90.00 | 267.93 | 7072.00 | 258.28  | -997.57  | -130.33 | 40.4464579 | -104.7948794 | 0.00 |
| 8320.00 | 90.00 | 267.93 | 7072.00 | 357.84  | -1001.18 | -230.26 | 40.4464480 | -104.7952384 | 0.00 |
| 8420.00 | 90.00 | 267.93 | 7072.00 | 457.41  | -1004.80 | -330.20 | 40.4464381 | -104.7955975 | 0.00 |
| 8520.00 | 90.00 | 267.93 | 7072.00 | 556.97  | -1008.41 | -430.13 | 40.4464281 | -104.7959565 | 0.00 |

## AG\_5C-31-L\_REV-B.0\_PWP.las

|          |       |        |         |         |          |          |            |              |      |
|----------|-------|--------|---------|---------|----------|----------|------------|--------------|------|
| 8620.00  | 90.00 | 267.93 | 7072.00 | 656.53  | -1012.03 | -530.07  | 40.4464182 | -104.7963156 | 0.00 |
| 8720.00  | 90.00 | 267.93 | 7072.00 | 756.09  | -1015.64 | -630.00  | 40.4464083 | -104.7966746 | 0.00 |
| 8820.00  | 90.00 | 267.93 | 7072.00 | 855.66  | -1019.26 | -729.94  | 40.4463983 | -104.7970337 | 0.00 |
| 8920.00  | 90.00 | 267.93 | 7072.00 | 955.22  | -1022.87 | -829.87  | 40.4463884 | -104.7973927 | 0.00 |
| 9020.00  | 90.00 | 267.93 | 7072.00 | 1054.78 | -1026.49 | -929.80  | 40.4463785 | -104.7977518 | 0.00 |
| 9120.00  | 90.00 | 267.93 | 7072.00 | 1154.35 | -1030.11 | -1029.74 | 40.4463685 | -104.7981108 | 0.00 |
| 9220.00  | 90.00 | 267.93 | 7072.00 | 1253.91 | -1033.72 | -1129.67 | 40.4463586 | -104.7984699 | 0.00 |
| 9320.00  | 90.00 | 267.93 | 7072.00 | 1353.47 | -1037.34 | -1229.61 | 40.4463487 | -104.7988289 | 0.00 |
| 9420.00  | 90.00 | 267.93 | 7072.00 | 1453.03 | -1040.95 | -1329.54 | 40.4463387 | -104.7991880 | 0.00 |
| 9520.00  | 90.00 | 267.93 | 7072.00 | 1552.60 | -1044.57 | -1429.48 | 40.4463288 | -104.7995470 | 0.00 |
| 9620.00  | 90.00 | 267.93 | 7072.00 | 1652.16 | -1048.18 | -1529.41 | 40.4463188 | -104.7999061 | 0.00 |
| 9720.00  | 90.00 | 267.93 | 7072.00 | 1751.72 | -1051.80 | -1629.35 | 40.4463089 | -104.8002651 | 0.00 |
| 9820.00  | 90.00 | 267.93 | 7072.00 | 1851.28 | -1055.41 | -1729.28 | 40.4462990 | -104.8006241 | 0.00 |
| 9920.00  | 90.00 | 267.93 | 7072.00 | 1950.85 | -1059.03 | -1829.22 | 40.4462890 | -104.8009832 | 0.00 |
| 10020.00 | 90.00 | 267.93 | 7072.00 | 2050.41 | -1062.65 | -1929.15 | 40.4462791 | -104.8013422 | 0.00 |
| 10120.00 | 90.00 | 267.93 | 7072.00 | 2149.97 | -1066.26 | -2029.09 | 40.4462691 | -104.8017013 | 0.00 |
| 10220.00 | 90.00 | 267.93 | 7072.00 | 2249.53 | -1069.88 | -2129.02 | 40.4462592 | -104.8020603 | 0.00 |
| 10320.00 | 90.00 | 267.93 | 7072.00 | 2349.10 | -1073.49 | -2228.95 | 40.4462492 | -104.8024194 | 0.00 |
| 10420.00 | 90.00 | 267.93 | 7072.00 | 2448.66 | -1077.11 | -2328.89 | 40.4462393 | -104.8027784 | 0.00 |
| 10520.00 | 90.00 | 267.93 | 7072.00 | 2548.22 | -1080.72 | -2428.82 | 40.4462293 | -104.8031375 | 0.00 |
| 10620.00 | 90.00 | 267.93 | 7072.00 | 2647.78 | -1084.34 | -2528.76 | 40.4462194 | -104.8034965 | 0.00 |
| 10720.00 | 90.00 | 267.93 | 7072.00 | 2747.35 | -1087.96 | -2628.69 | 40.4462094 | -104.8038556 | 0.00 |
| 10820.00 | 90.00 | 267.93 | 7072.00 | 2846.91 | -1091.57 | -2728.63 | 40.4461995 | -104.8042146 | 0.00 |
| 10920.00 | 90.00 | 267.93 | 7072.00 | 2946.47 | -1095.19 | -2828.56 | 40.4461895 | -104.8045737 | 0.00 |
| 11020.00 | 90.00 | 267.93 | 7072.00 | 3046.03 | -1098.80 | -2928.50 | 40.4461796 | -104.8049327 | 0.00 |
| 11120.00 | 90.00 | 267.93 | 7072.00 | 3145.60 | -1102.42 | -3028.43 | 40.4461696 | -104.8052918 | 0.00 |
| 11220.00 | 90.00 | 267.93 | 7072.00 | 3245.16 | -1106.03 | -3128.37 | 40.4461596 | -104.8056508 | 0.00 |
| 11320.00 | 90.00 | 267.93 | 7072.00 | 3344.72 | -1109.65 | -3228.30 | 40.4461497 | -104.8060099 | 0.00 |
| 11420.00 | 90.00 | 267.93 | 7072.00 | 3444.29 | -1113.26 | -3328.24 | 40.4461397 | -104.8063689 | 0.00 |
| 11520.00 | 90.00 | 267.93 | 7072.00 | 3543.85 | -1116.88 | -3428.17 | 40.4461298 | -104.8067280 | 0.00 |
| 11620.00 | 90.00 | 267.93 | 7072.00 | 3643.41 | -1120.50 | -3528.10 | 40.4461198 | -104.8070870 | 0.00 |
| 11720.00 | 90.00 | 267.93 | 7072.00 | 3742.97 | -1124.11 | -3628.04 | 40.4461098 | -104.8074461 | 0.00 |
| 11820.00 | 90.00 | 267.93 | 7072.00 | 3842.54 | -1127.73 | -3727.97 | 40.4460999 | -104.8078051 | 0.00 |
| 11920.00 | 90.00 | 267.93 | 7072.00 | 3942.10 | -1131.34 | -3827.91 | 40.4460899 | -104.8081641 | 0.00 |
| 12020.00 | 90.00 | 267.93 | 7072.00 | 4041.66 | -1134.96 | -3927.84 | 40.4460799 | -104.8085232 | 0.00 |
| 12120.00 | 90.00 | 267.93 | 7072.00 | 4141.22 | -1138.57 | -4027.78 | 40.4460700 | -104.8088822 | 0.00 |
| 12220.00 | 90.00 | 267.93 | 7072.00 | 4240.79 | -1142.19 | -4127.71 | 40.4460600 | -104.8092413 | 0.00 |
| 12320.00 | 90.00 | 267.93 | 7072.00 | 4340.35 | -1145.81 | -4227.65 | 40.4460500 | -104.8096003 | 0.00 |
| 12420.00 | 90.00 | 267.93 | 7072.00 | 4439.91 | -1149.42 | -4327.58 | 40.4460401 | -104.8099594 | 0.00 |
| 12520.00 | 90.00 | 267.93 | 7072.00 | 4539.47 | -1153.04 | -4427.52 | 40.4460301 | -104.8103184 | 0.00 |
| 12620.00 | 90.00 | 267.93 | 7072.00 | 4639.04 | -1156.65 | -4527.45 | 40.4460201 | -104.8106775 | 0.00 |
| 12720.00 | 90.00 | 267.93 | 7072.00 | 4738.60 | -1160.27 | -4627.39 | 40.4460101 | -104.8110365 | 0.00 |
| 12820.00 | 90.00 | 267.93 | 7072.00 | 4838.16 | -1163.88 | -4727.32 | 40.4460002 | -104.8113956 | 0.00 |
| 12920.00 | 90.00 | 267.93 | 7072.00 | 4937.72 | -1167.50 | -4827.25 | 40.4459902 | -104.8117546 | 0.00 |
| 13020.00 | 90.00 | 267.93 | 7072.00 | 5037.29 | -1171.11 | -4927.19 | 40.4459802 | -104.8121136 | 0.00 |
| 13120.00 | 90.00 | 267.93 | 7072.00 | 5136.85 | -1174.73 | -5027.12 | 40.4459702 | -104.8124727 | 0.00 |
| 13220.00 | 90.00 | 267.93 | 7072.00 | 5236.41 | -1178.35 | -5127.06 | 40.4459602 | -104.8128317 | 0.00 |
| 13320.00 | 90.00 | 267.93 | 7072.00 | 5335.97 | -1181.96 | -5226.99 | 40.4459503 | -104.8131908 | 0.00 |

## AG\_5C-31-L\_REV-B.0\_PWP.las

|          |       |        |         |          |          |           |            |              |      |
|----------|-------|--------|---------|----------|----------|-----------|------------|--------------|------|
| 13420.00 | 90.00 | 267.93 | 7072.00 | 5435.54  | -1185.58 | -5326.93  | 40.4459403 | -104.8135498 | 0.00 |
| 13520.00 | 90.00 | 267.93 | 7072.00 | 5535.10  | -1189.19 | -5426.86  | 40.4459303 | -104.8139089 | 0.00 |
| 13620.00 | 90.00 | 267.93 | 7072.00 | 5634.66  | -1192.81 | -5526.80  | 40.4459203 | -104.8142679 | 0.00 |
| 13720.00 | 90.00 | 267.93 | 7072.00 | 5734.23  | -1196.42 | -5626.73  | 40.4459103 | -104.8146270 | 0.00 |
| 13820.00 | 90.00 | 267.93 | 7072.00 | 5833.79  | -1200.04 | -5726.67  | 40.4459003 | -104.8149860 | 0.00 |
| 13920.00 | 90.00 | 267.93 | 7072.00 | 5933.35  | -1203.66 | -5826.60  | 40.4458903 | -104.8153451 | 0.00 |
| 14020.00 | 90.00 | 267.93 | 7072.00 | 6032.91  | -1207.27 | -5926.54  | 40.4458803 | -104.8157041 | 0.00 |
| 14120.00 | 90.00 | 267.93 | 7072.00 | 6132.48  | -1210.89 | -6026.47  | 40.4458704 | -104.8160631 | 0.00 |
| 14220.00 | 90.00 | 267.93 | 7072.00 | 6232.04  | -1214.50 | -6126.40  | 40.4458604 | -104.8164222 | 0.00 |
| 14320.00 | 90.00 | 267.93 | 7072.00 | 6331.60  | -1218.12 | -6226.34  | 40.4458504 | -104.8167812 | 0.00 |
| 14420.00 | 90.00 | 267.93 | 7072.00 | 6431.16  | -1221.73 | -6326.27  | 40.4458404 | -104.8171403 | 0.00 |
| 14520.00 | 90.00 | 267.93 | 7072.00 | 6530.73  | -1225.35 | -6426.21  | 40.4458304 | -104.8174993 | 0.00 |
| 14620.00 | 90.00 | 267.93 | 7072.00 | 6630.29  | -1228.96 | -6526.14  | 40.4458204 | -104.8178584 | 0.00 |
| 14720.00 | 90.00 | 267.93 | 7072.00 | 6729.85  | -1232.58 | -6626.08  | 40.4458104 | -104.8182174 | 0.00 |
| 14820.00 | 90.00 | 267.93 | 7072.00 | 6829.41  | -1236.20 | -6726.01  | 40.4458004 | -104.8185764 | 0.00 |
| 14920.00 | 90.00 | 267.93 | 7072.00 | 6928.98  | -1239.81 | -6825.95  | 40.4457904 | -104.8189355 | 0.00 |
| 15020.00 | 90.00 | 267.93 | 7072.00 | 7028.54  | -1243.43 | -6925.88  | 40.4457804 | -104.8192945 | 0.00 |
| 15120.00 | 90.00 | 267.93 | 7072.00 | 7128.10  | -1247.04 | -7025.82  | 40.4457704 | -104.8196536 | 0.00 |
| 15220.00 | 90.00 | 267.93 | 7072.00 | 7227.66  | -1250.66 | -7125.75  | 40.4457604 | -104.8200126 | 0.00 |
| 15320.00 | 90.00 | 267.93 | 7072.00 | 7327.23  | -1254.27 | -7225.69  | 40.4457504 | -104.8203717 | 0.00 |
| 15420.00 | 90.00 | 267.93 | 7072.00 | 7426.79  | -1257.89 | -7325.62  | 40.4457404 | -104.8207307 | 0.00 |
| 15520.00 | 90.00 | 267.93 | 7072.00 | 7526.35  | -1261.51 | -7425.55  | 40.4457304 | -104.8210897 | 0.00 |
| 15620.00 | 90.00 | 267.93 | 7072.00 | 7625.91  | -1265.12 | -7525.49  | 40.4457204 | -104.8214488 | 0.00 |
| 15720.00 | 90.00 | 267.93 | 7072.00 | 7725.48  | -1268.74 | -7625.42  | 40.4457104 | -104.8218078 | 0.00 |
| 15820.00 | 90.00 | 267.93 | 7072.00 | 7825.04  | -1272.35 | -7725.36  | 40.4457003 | -104.8221669 | 0.00 |
| 15920.00 | 90.00 | 267.93 | 7072.00 | 7924.60  | -1275.97 | -7825.29  | 40.4456903 | -104.8225259 | 0.00 |
| 16020.00 | 90.00 | 267.93 | 7072.00 | 8024.17  | -1279.58 | -7925.23  | 40.4456803 | -104.8228850 | 0.00 |
| 16120.00 | 90.00 | 267.93 | 7072.00 | 8123.73  | -1283.20 | -8025.16  | 40.4456703 | -104.8232440 | 0.00 |
| 16220.00 | 90.00 | 267.93 | 7072.00 | 8223.29  | -1286.81 | -8125.10  | 40.4456603 | -104.8236030 | 0.00 |
| 16320.00 | 90.00 | 267.93 | 7072.00 | 8322.85  | -1290.43 | -8225.03  | 40.4456503 | -104.8239621 | 0.00 |
| 16420.00 | 90.00 | 267.93 | 7072.00 | 8422.42  | -1294.05 | -8324.97  | 40.4456403 | -104.8243211 | 0.00 |
| 16520.00 | 90.00 | 267.93 | 7072.00 | 8521.98  | -1297.66 | -8424.90  | 40.4456302 | -104.8246802 | 0.00 |
| 16620.00 | 90.00 | 267.93 | 7072.00 | 8621.54  | -1301.28 | -8524.84  | 40.4456202 | -104.8250392 | 0.00 |
| 16720.00 | 90.00 | 267.93 | 7072.00 | 8721.10  | -1304.89 | -8624.77  | 40.4456102 | -104.8253982 | 0.00 |
| 16820.00 | 90.00 | 267.93 | 7072.00 | 8820.67  | -1308.51 | -8724.70  | 40.4456002 | -104.8257573 | 0.00 |
| 16920.00 | 90.00 | 267.93 | 7072.00 | 8920.23  | -1312.12 | -8824.64  | 40.4455902 | -104.8261163 | 0.00 |
| 17020.00 | 90.00 | 267.93 | 7072.00 | 9019.79  | -1315.74 | -8924.57  | 40.4455801 | -104.8264754 | 0.00 |
| 17120.00 | 90.00 | 267.93 | 7072.00 | 9119.35  | -1319.36 | -9024.51  | 40.4455701 | -104.8268344 | 0.00 |
| 17220.00 | 90.00 | 267.93 | 7072.00 | 9218.92  | -1322.97 | -9124.44  | 40.4455601 | -104.8271935 | 0.00 |
| 17320.00 | 90.00 | 267.93 | 7072.00 | 9318.48  | -1326.59 | -9224.38  | 40.4455501 | -104.8275525 | 0.00 |
| 17420.00 | 90.00 | 267.93 | 7072.00 | 9418.04  | -1330.20 | -9324.31  | 40.4455400 | -104.8279115 | 0.00 |
| 17520.00 | 90.00 | 267.93 | 7072.00 | 9517.60  | -1333.82 | -9424.25  | 40.4455300 | -104.8282706 | 0.00 |
| 17620.00 | 90.00 | 267.93 | 7072.00 | 9617.17  | -1337.43 | -9524.18  | 40.4455200 | -104.8286296 | 0.00 |
| 17720.00 | 90.00 | 267.93 | 7072.00 | 9716.73  | -1341.05 | -9624.12  | 40.4455099 | -104.8289887 | 0.00 |
| 17820.00 | 90.00 | 267.93 | 7072.00 | 9816.29  | -1344.66 | -9724.05  | 40.4454999 | -104.8293477 | 0.00 |
| 17920.00 | 90.00 | 267.93 | 7072.00 | 9915.85  | -1348.28 | -9823.99  | 40.4454899 | -104.8297067 | 0.00 |
| 18020.00 | 90.00 | 267.93 | 7072.00 | 10015.42 | -1351.90 | -9923.92  | 40.4454798 | -104.8300658 | 0.00 |
| 18120.00 | 90.00 | 267.93 | 7072.00 | 10114.98 | -1355.51 | -10023.85 | 40.4454698 | -104.8304248 | 0.00 |

| AG_5C-31-L_REV-B.0_PWP.las |       |        |         |          |          |           |            |              |      |
|----------------------------|-------|--------|---------|----------|----------|-----------|------------|--------------|------|
| 18220.00                   | 90.00 | 267.93 | 7072.00 | 10214.54 | -1359.13 | -10123.79 | 40.4454598 | -104.8307839 | 0.00 |
| 18320.00                   | 90.00 | 267.93 | 7072.00 | 10314.11 | -1362.74 | -10223.72 | 40.4454497 | -104.8311429 | 0.00 |
| 18420.00                   | 90.00 | 267.93 | 7072.00 | 10413.67 | -1366.36 | -10323.66 | 40.4454397 | -104.8315019 | 0.00 |
| 18520.00                   | 90.00 | 267.93 | 7072.00 | 10513.23 | -1369.97 | -10423.59 | 40.4454297 | -104.8318610 | 0.00 |
| 18620.00                   | 90.00 | 267.93 | 7072.00 | 10612.79 | -1373.59 | -10523.53 | 40.4454196 | -104.8322200 | 0.00 |
| 18627.27                   | 90.00 | 267.93 | 7072.00 | 10620.03 | -1373.85 | -10530.79 | 40.4454189 | -104.8322461 | 0.00 |



# Planned Wellpath Report

AG 5C-31-L REV-B.0 PWP

Page 1 of 10



## REFERENCE WELLPATH IDENTIFICATION

|          |                                |          |   |
|----------|--------------------------------|----------|---|
| Operator | SYNERGY RESOURCES CORPORATION  | Slot     | SLOT#09 AG 5C-31-L (994'FNL & 558'FEL SEC 32) |
| Area     | COLORADO                       | Well     | AG 5C-31-L                                    |
| Field    | WELD COUNTY (NAD83,TRUE NORTH) | Wellbore | AG 5C-31-L PWB                                |
| Facility | SEC.32-T06N-R66W               |          |   |

## REPORT SETUP INFORMATION

|                     |   |                      |   |
|---------------------|---|----------------------|---|
| Projection System   | NAD83 / Lambert Colorado SP, Northern Zone (501), US feet | Software System      | WellArchitect® 5.0                            |
| North Reference     | True  | User                 | Wagnjam                                       |
| Scale               | 0.999963  | Report Generated     | 9/27/2016 at 11:50:15 AM                      |
| Convergence at slot | 0.46° East  | Database/Source file | WA_DEN_Denver_Defn/AG_5C-31-L_REV-B.0_PWP.xml |

## WELLPATH LOCATION

|                       | Local coordinates |          | Grid coordinates |                 | Geographic coordinates |                 |
|-----------------------|-------------------|----------|------------------|-----------------|------------------------|-----------------|
|                       | North[ft]         | East[ft] | Easting[US ft]   | Northing[US ft] | Latitude               | Longitude       |
| Slot Location         | -116.88           | -108.85  | 3196369.13       | 1407263.74      | 40°26'57.106"N         | 104°47'39.880"W |
| Facility Reference Pt |                   |          | 3196477.05       | 1407381.48      | 40°26'58.261"N         | 104°47'38.472"W |
| Field Reference Pt    |                   |          | 3171284.48       | 1426358.81      | 40°30'07.643"N         | 104°53'02.634"W |

## WELLPATH DATUM

|                          |                           |   |                   |
|--------------------------|---------------------------|---|-------------------|
| Calculation method       | Minimum curvature         | PRECISION 462 (20') (RKB) to Facility Vertical Datum  | 4724.00ft         |
| Horizontal Reference Pt  | Slot                      | PRECISION 462 (20') (RKB) to Mean Sea Level   | 4724.00ft         |
| Vertical Reference Pt    | PRECISION 462 (20') (RKB) | PRECISION 462 (20') (RKB) to Mud Line at Slot (SLOT#09 AG 5C-31-L (994'FNL & 558'FEL SEC 32)) | 4724.00ft         |
| MD Reference Pt          | PRECISION 462 (20') (RKB) | Section Origin  | N 0.00, E 0.00 ft |
| Field Vertical Reference | Mean Sea Level            | Section Azimuth   | 262.57°           |



# Planned Wellpath Report

AG 5C-31-L REV-B.0 PWP

Page 2 of 10



## REFERENCE WELLPATH IDENTIFICATION

|          |                                |          |   |
|----------|--------------------------------|----------|---|
| Operator | SYNERGY RESOURCES CORPORATION  | Slot     | SLOT#09 AG 5C-31-L (994'FNL & 558'FEL SEC 32) |
| Area     | COLORADO                       | Well     | AG 5C-31-L                                    |
| Field    | WELD COUNTY (NAD83,TRUE NORTH) | Wellbore | AG 5C-31-L PWB                                |
| Facility | SEC.32-T06N-R66W               |          |   |

## WELLPATH DATA (199 stations) † = interpolated/extrapolated station

| MD<br>[ft] | Inclination<br>[°] | Azimuth<br>[°] | TVD<br>[ft] | Vert Sect<br>[ft] | North<br>[ft] | East<br>[ft] | DLS<br>[°/100ft] | Comments       |
|------------|--------------------|----------------|-------------|-------------------|---------------|--------------|------------------|----------------|
| 0.00†      | 0.000              | 127.229        | 0.00        | 0.00              | 0.00          | 0.00         | 0.00             |                |
| 20.00      | 0.000              | 127.229        | 20.00       | 0.00              | 0.00          | 0.00         | 0.00             | Tie On         |
| 120.00†    | 0.000              | 127.229        | 120.00      | 0.00              | 0.00          | 0.00         | 0.00             |                |
| 200.00     | 0.000              | 127.229        | 200.00      | 0.00              | 0.00          | 0.00         | 0.00             | End of Tangent |
| 220.00†    | 0.400              | 127.229        | 220.00      | -0.05             | -0.04         | 0.06         | 2.00             |                |
| 320.00†    | 2.400              | 127.229        | 319.96      | -1.79             | -1.52         | 2.00         | 2.00             |                |
| 420.00†    | 4.400              | 127.229        | 419.78      | -6.01             | -5.11         | 6.72         | 2.00             |                |
| 520.00†    | 6.400              | 127.229        | 519.33      | -12.70            | -10.80        | 14.22        | 2.00             |                |
| 620.00†    | 8.400              | 127.229        | 618.50      | -21.86            | -18.59        | 24.47        | 2.00             |                |
| 720.00†    | 10.400             | 127.229        | 717.15      | -33.48            | -28.47        | 37.47        | 2.00             |                |
| 820.00†    | 12.400             | 127.229        | 815.17      | -47.53            | -40.43        | 53.21        | 2.00             |                |
| 874.16     | 13.483             | 127.229        | 867.95      | -56.16            | -47.77        | 62.87        | 2.00             | End of Build   |
| 920.00†    | 13.483             | 127.229        | 912.53      | -63.76            | -54.24        | 71.38        | 0.00             |                |
| 1020.00†   | 13.483             | 127.229        | 1009.78     | -80.35            | -68.34        | 89.94        | 0.00             |                |
| 1120.00†   | 13.483             | 127.229        | 1107.02     | -96.93            | -82.45        | 108.51       | 0.00             |                |
| 1220.00†   | 13.483             | 127.229        | 1204.26     | -113.51           | -96.55        | 127.07       | 0.00             |                |
| 1320.00†   | 13.483             | 127.229        | 1301.51     | -130.10           | -110.66       | 145.64       | 0.00             |                |
| 1420.00†   | 13.483             | 127.229        | 1398.75     | -146.68           | -124.77       | 164.20       | 0.00             |                |
| 1520.00†   | 13.483             | 127.229        | 1495.99     | -163.27           | -138.87       | 182.77       | 0.00             |                |
| 1620.00†   | 13.483             | 127.229        | 1593.24     | -179.85           | -152.98       | 201.33       | 0.00             |                |
| 1720.00†   | 13.483             | 127.229        | 1690.48     | -196.43           | -167.09       | 219.90       | 0.00             |                |
| 1820.00†   | 13.483             | 127.229        | 1787.73     | -213.02           | -181.19       | 238.46       | 0.00             |                |
| 1920.00†   | 13.483             | 127.229        | 1884.97     | -229.60           | -195.30       | 257.03       | 0.00             |                |
| 2020.00†   | 13.483             | 127.229        | 1982.21     | -246.19           | -209.40       | 275.59       | 0.00             |                |
| 2120.00†   | 13.483             | 127.229        | 2079.46     | -262.77           | -223.51       | 294.16       | 0.00             |                |
| 2220.00†   | 13.483             | 127.229        | 2176.70     | -279.35           | -237.62       | 312.72       | 0.00             |                |
| 2320.00†   | 13.483             | 127.229        | 2273.95     | -295.94           | -251.72       | 331.28       | 0.00             |                |
| 2420.00†   | 13.483             | 127.229        | 2371.19     | -312.52           | -265.83       | 349.85       | 0.00             |                |
| 2520.00†   | 13.483             | 127.229        | 2468.43     | -329.10           | -279.93       | 368.41       | 0.00             |                |
| 2620.00†   | 13.483             | 127.229        | 2565.68     | -345.69           | -294.04       | 386.98       | 0.00             |                |



# Planned Wellpath Report

AG 5C-31-L REV-B.0 PWP

Page 3 of 10



| REFERENCE WELLPATH IDENTIFICATION |                                |          |   |
|-----------------------------------|--------------------------------|----------|---|
| Operator                          | SYNERGY RESOURCES CORPORATION  | Slot     | SLOT#09 AG 5C-31-L (994'FNL & 558'FEL SEC 32) |
| Area                              | COLORADO                       | Well     | AG 5C-31-L                                    |
| Field                             | WELD COUNTY (NAD83,TRUE NORTH) | Wellbore | AG 5C-31-L PWB                                |
| Facility                          | SEC.32-T06N-R66W               |          |   |

| WELLPATH DATA (199 stations) † = interpolated/extrapolated station |                    |                |             |                   |               |              |                  |          |
|--|--------------------|----------------|-------------|-------------------|---------------|--------------|------------------|----------|
| MD<br>[ft]   | Inclination<br>[°] | Azimuth<br>[°] | TVD<br>[ft] | Vert Sect<br>[ft] | North<br>[ft] | East<br>[ft] | DLS<br>[°/100ft] | Comments |
| 2720.00†   | 13.483             | 127.229        | 2662.92     | -362.27           | -308.15       | 405.54       | 0.00             |          |
| 2820.00†   | 13.483             | 127.229        | 2760.16     | -378.86           | -322.25       | 424.11       | 0.00             |          |
| 2920.00†   | 13.483             | 127.229        | 2857.41     | -395.44           | -336.36       | 442.67       | 0.00             |          |
| 3020.00†   | 13.483             | 127.229        | 2954.65     | -412.02           | -350.46       | 461.24       | 0.00             |          |
| 3120.00†   | 13.483             | 127.229        | 3051.90     | -428.61           | -364.57       | 479.80       | 0.00             |          |
| 3220.00†   | 13.483             | 127.229        | 3149.14     | -445.19           | -378.68       | 498.37       | 0.00             |          |
| 3320.00†   | 13.483             | 127.229        | 3246.38     | -461.78           | -392.78       | 516.93       | 0.00             |          |
| 3420.00†   | 13.483             | 127.229        | 3343.63     | -478.36           | -406.89       | 535.50       | 0.00             |          |
| 3520.00†   | 13.483             | 127.229        | 3440.87     | -494.94           | -421.00       | 554.06       | 0.00             |          |
| 3620.00†   | 13.483             | 127.229        | 3538.12     | -511.53           | -435.10       | 572.63       | 0.00             |          |
| 3720.00†   | 13.483             | 127.229        | 3635.36     | -528.11           | -449.21       | 591.19       | 0.00             |          |
| 3820.00†   | 13.483             | 127.229        | 3732.60     | -544.69           | -463.31       | 609.75       | 0.00             |          |
| 3920.00†   | 13.483             | 127.229        | 3829.85     | -561.28           | -477.42       | 628.32       | 0.00             |          |
| 4020.00†   | 13.483             | 127.229        | 3927.09     | -577.86           | -491.53       | 646.88       | 0.00             |          |
| 4120.00†   | 13.483             | 127.229        | 4024.34     | -594.45           | -505.63       | 665.45       | 0.00             |          |
| 4220.00†   | 13.483             | 127.229        | 4121.58     | -611.03           | -519.74       | 684.01       | 0.00             |          |
| 4320.00†   | 13.483             | 127.229        | 4218.82     | -627.61           | -533.84       | 702.58       | 0.00             |          |
| 4420.00†   | 13.483             | 127.229        | 4316.07     | -644.20           | -547.95       | 721.14       | 0.00             |          |
| 4520.00†   | 13.483             | 127.229        | 4413.31     | -660.78           | -562.06       | 739.71       | 0.00             |          |
| 4620.00†   | 13.483             | 127.229        | 4510.55     | -677.37           | -576.16       | 758.27       | 0.00             |          |
| 4720.00†   | 13.483             | 127.229        | 4607.80     | -693.95           | -590.27       | 776.84       | 0.00             |          |
| 4820.00†   | 13.483             | 127.229        | 4705.04     | -710.53           | -604.37       | 795.40       | 0.00             |          |
| 4920.00†   | 13.483             | 127.229        | 4802.29     | -727.12           | -618.48       | 813.97       | 0.00             |          |
| 5020.00†   | 13.483             | 127.229        | 4899.53     | -743.70           | -632.59       | 832.53       | 0.00             |          |
| 5120.00†   | 13.483             | 127.229        | 4996.77     | -760.29           | -646.69       | 851.10       | 0.00             |          |
| 5220.00†   | 13.483             | 127.229        | 5094.02     | -776.87           | -660.80       | 869.66       | 0.00             |          |
| 5320.00†   | 13.483             | 127.229        | 5191.26     | -793.45           | -674.91       | 888.23       | 0.00             |          |
| 5420.00†   | 13.483             | 127.229        | 5288.51     | -810.04           | -689.01       | 906.79       | 0.00             |          |
| 5520.00†   | 13.483             | 127.229        | 5385.75     | -826.62           | -703.12       | 925.35       | 0.00             |          |
| 5620.00†   | 13.483             | 127.229        | 5482.99     | -843.20           | -717.22       | 943.92       | 0.00             |          |



# Planned Wellpath Report

AG 5C-31-L REV-B.0 PWP

Page 4 of 10



| REFERENCE WELLPATH IDENTIFICATION |                                |          |   |
|-----------------------------------|--------------------------------|----------|---|
| Operator                          | SYNERGY RESOURCES CORPORATION  | Slot     | SLOT#09 AG 5C-31-L (994'FNL & 558'FEL SEC 32) |
| Area                              | COLORADO                       | Well     | AG 5C-31-L                                    |
| Field                             | WELD COUNTY (NAD83,TRUE NORTH) | Wellbore | AG 5C-31-L PWB                                |
| Facility                          | SEC.32-T06N-R66W               |          |   |

| WELLPATH DATA (199 stations) † = interpolated/extrapolated station |                    |                |                      |                   |               |              |                  |                |
|--|--------------------|----------------|----------------------|-------------------|---------------|--------------|------------------|----------------|
| MD<br>[ft]   | Inclination<br>[°] | Azimuth<br>[°] | TVD<br>[ft]          | Vert Sect<br>[ft] | North<br>[ft] | East<br>[ft] | DLS<br>[°/100ft] | Comments       |
| 5720.00†   | 13.483             | 127.229        | 5580.24              | -859.79           | -731.33       | 962.48       | 0.00             |                |
| 5820.00†   | 13.483             | 127.229        | 5677.48              | -876.37           | -745.44       | 981.05       | 0.00             |                |
| 5920.00†   | 13.483             | 127.229        | 5774.72              | -892.96           | -759.54       | 999.61       | 0.00             |                |
| 6020.00†   | 13.483             | 127.229        | 5871.97              | -909.54           | -773.65       | 1018.18      | 0.00             |                |
| 6120.00†   | 13.483             | 127.229        | 5969.21              | -926.12           | -787.75       | 1036.74      | 0.00             |                |
| 6220.00†   | 13.483             | 127.229        | 6066.46              | -942.71           | -801.86       | 1055.31      | 0.00             |                |
| 6320.00†   | 13.483             | 127.229        | 6163.70              | -959.29           | -815.97       | 1073.87      | 0.00             |                |
| 6420.00†   | 13.483             | 127.229        | 6260.94              | -975.88           | -830.07       | 1092.44      | 0.00             |                |
| 6490.02  | 13.483             | 127.229        | 6329.04              | -987.49           | -839.95       | 1105.44      | 0.00             | End of Tangent |
| 6520.00†   | 11.548             | 135.938        | 6358.30              | -991.76           | -844.22       | 1110.31      | 9.00             |                |
| 6620.00†   | 8.732              | 186.545        | 6456.91              | -995.91           | -858.99       | 1116.41      | 9.00             |                |
| 6720.00†   | 13.414             | 228.374        | 6555.17              | -984.46           | -874.26       | 1106.86      | 9.00             |                |
| 6820.00†   | 21.079             | 244.725        | 6650.66              | -957.69           | -889.68       | 1081.88      | 9.00             |                |
| 6893.83†   | 27.253             | 250.780        | 6718.00              | -928.47           | -900.92       | 1053.88      | 9.00             | SHARON SPRINGS |
| 6920.00†   | 29.487             | 252.349        | 6741.02              | -916.27           | -904.85       | 1042.08      | 9.00             |                |
| 6935.00†   | 30.776             | 253.154        | 6754.00              | -908.85           | -907.08       | 1034.89      | 9.00             | NIO-A          |
| 7020.00†   | 38.148             | 256.780        | 6824.04              | -861.21           | -919.41       | 988.45       | 9.00             |                |
| 7089.06†   | 44.199             | 258.943        | 6876.00              | -815.92           | -928.91       | 944.02       | 9.00             | NIO-B          |
| 7120.00†   | 46.921             | 259.764        | 6897.66              | -793.86           | -932.99       | 922.31       | 9.00             |                |
| 7199.03†   | 53.897             | 261.569        | 6948.00              | -733.04           | -942.81       | 862.25       | 9.00             | NIO-C          |
| 7220.00†   | 55.752             | 261.993        | 6960.08              | -715.90           | -945.26       | 845.28       | 9.00             |                |
| 7320.00†   | 64.616             | 263.796        | 7009.75              | -629.23           | -955.92       | 759.27       | 9.00             |                |
| 7401.64†   | 71.867             | 265.077        | 7040.00              | -553.50           | -963.25       | 683.85       | 9.00             | FORT HAYS      |
| 7420.00†   | 73.498             | 265.349        | 7045.46              | -535.99           | -964.71       | 666.39       | 9.00             |                |
| 7491.88†   | 79.890             | 266.376        | 7062.00              | -466.19           | -969.74       | 596.66       | 9.00             | CODELL         |
| 7520.00†   | 82.391             | 266.766        | 7066.33              | -438.48           | -971.40       | 568.93       | 9.00             |                |
| 7605.52  | 90.000             | 267.928        | 7072.00 <sup>1</sup> | -353.51           | -975.35       | 483.75       | 9.00             | End of 3D Arc  |
| 7620.00†   | 90.000             | 267.928        | 7072.00              | -339.09           | -975.87       | 469.28       | 0.00             |                |
| 7720.00†   | 90.000             | 267.928        | 7072.00              | -239.53           | -979.49       | 369.35       | 0.00             |                |
| 7820.00†   | 90.000             | 267.928        | 7072.00              | -139.97           | -983.10       | 269.41       | 0.00             |                |



# Planned Wellpath Report

AG 5C-31-L REV-B.0 PWP

Page 5 of 10



## REFERENCE WELLPATH IDENTIFICATION

|          |                                |          |   |
|----------|--------------------------------|----------|---|
| Operator | SYNERGY RESOURCES CORPORATION  | Slot     | SLOT#09 AG 5C-31-L (994'FNL & 558'FEL SEC 32) |
| Area     | COLORADO                       | Well     | AG 5C-31-L                                    |
| Field    | WELD COUNTY (NAD83,TRUE NORTH) | Wellbore | AG 5C-31-L PWB                                |
| Facility | SEC.32-T06N-R66W               |          |   |

## WELLPATH DATA (199 stations) † = interpolated/extrapolated station

| MD<br>[ft] | Inclination<br>[°] | Azimuth<br>[°] | TVD<br>[ft] | Vert Sect<br>[ft] | North<br>[ft] | East<br>[ft] | DLS<br>[°/100ft] | Comments |
|------------|--------------------|----------------|-------------|-------------------|---------------|--------------|------------------|----------|
| 7920.00†   | 90.000             | 267.928        | 7072.00     | -40.41            | -986.72       | 169.48       | 0.00             |          |
| 8020.00†   | 90.000             | 267.928        | 7072.00     | 59.16             | -990.33       | 69.54        | 0.00             |          |
| 8120.00†   | 90.000             | 267.928        | 7072.00     | 158.72            | -993.95       | -30.39       | 0.00             |          |
| 8220.00†   | 90.000             | 267.928        | 7072.00     | 258.28            | -997.57       | -130.33      | 0.00             |          |
| 8320.00†   | 90.000             | 267.928        | 7072.00     | 357.84            | -1001.18      | -230.26      | 0.00             |          |
| 8420.00†   | 90.000             | 267.928        | 7072.00     | 457.41            | -1004.80      | -330.20      | 0.00             |          |
| 8520.00†   | 90.000             | 267.928        | 7072.00     | 556.97            | -1008.41      | -430.13      | 0.00             |          |
| 8620.00†   | 90.000             | 267.928        | 7072.00     | 656.53            | -1012.03      | -530.07      | 0.00             |          |
| 8720.00†   | 90.000             | 267.928        | 7072.00     | 756.09            | -1015.64      | -630.00      | 0.00             |          |
| 8820.00†   | 90.000             | 267.928        | 7072.00     | 855.66            | -1019.26      | -729.94      | 0.00             |          |
| 8920.00†   | 90.000             | 267.928        | 7072.00     | 955.22            | -1022.87      | -829.87      | 0.00             |          |
| 9020.00†   | 90.000             | 267.928        | 7072.00     | 1054.78           | -1026.49      | -929.80      | 0.00             |          |
| 9120.00†   | 90.000             | 267.928        | 7072.00     | 1154.35           | -1030.11      | -1029.74     | 0.00             |          |
| 9220.00†   | 90.000             | 267.928        | 7072.00     | 1253.91           | -1033.72      | -1129.67     | 0.00             |          |
| 9320.00†   | 90.000             | 267.928        | 7072.00     | 1353.47           | -1037.34      | -1229.61     | 0.00             |          |
| 9420.00†   | 90.000             | 267.928        | 7072.00     | 1453.03           | -1040.95      | -1329.54     | 0.00             |          |
| 9520.00†   | 90.000             | 267.928        | 7072.00     | 1552.60           | -1044.57      | -1429.48     | 0.00             |          |
| 9620.00†   | 90.000             | 267.928        | 7072.00     | 1652.16           | -1048.18      | -1529.41     | 0.00             |          |
| 9720.00†   | 90.000             | 267.928        | 7072.00     | 1751.72           | -1051.80      | -1629.35     | 0.00             |          |
| 9820.00†   | 90.000             | 267.928        | 7072.00     | 1851.28           | -1055.41      | -1729.28     | 0.00             |          |
| 9920.00†   | 90.000             | 267.928        | 7072.00     | 1950.85           | -1059.03      | -1829.22     | 0.00             |          |
| 10020.00†  | 90.000             | 267.928        | 7072.00     | 2050.41           | -1062.65      | -1929.15     | 0.00             |          |
| 10120.00†  | 90.000             | 267.928        | 7072.00     | 2149.97           | -1066.26      | -2029.09     | 0.00             |          |
| 10220.00†  | 90.000             | 267.928        | 7072.00     | 2249.53           | -1069.88      | -2129.02     | 0.00             |          |
| 10320.00†  | 90.000             | 267.928        | 7072.00     | 2349.10           | -1073.49      | -2228.95     | 0.00             |          |
| 10420.00†  | 90.000             | 267.928        | 7072.00     | 2448.66           | -1077.11      | -2328.89     | 0.00             |          |
| 10520.00†  | 90.000             | 267.928        | 7072.00     | 2548.22           | -1080.72      | -2428.82     | 0.00             |          |
| 10620.00†  | 90.000             | 267.928        | 7072.00     | 2647.78           | -1084.34      | -2528.76     | 0.00             |          |
| 10720.00†  | 90.000             | 267.928        | 7072.00     | 2747.35           | -1087.96      | -2628.69     | 0.00             |          |
| 10820.00†  | 90.000             | 267.928        | 7072.00     | 2846.91           | -1091.57      | -2728.63     | 0.00             |          |



# Planned Wellpath Report

AG 5C-31-L REV-B.0 PWP

Page 6 of 10



## REFERENCE WELLPATH IDENTIFICATION

|          |                                |          |   |
|----------|--------------------------------|----------|---|
| Operator | SYNERGY RESOURCES CORPORATION  | Slot     | SLOT#09 AG 5C-31-L (994'FNL & 558'FEL SEC 32) |
| Area     | COLORADO                       | Well     | AG 5C-31-L                                    |
| Field    | WELD COUNTY (NAD83,TRUE NORTH) | Wellbore | AG 5C-31-L PWB                                |
| Facility | SEC.32-T06N-R66W               |          |   |

## WELLPATH DATA (199 stations) † = interpolated/extrapolated station

| MD<br>[ft] | Inclination<br>[°] | Azimuth<br>[°] | TVD<br>[ft] | Vert Sect<br>[ft] | North<br>[ft] | East<br>[ft] | DLS<br>[°/100ft] | Comments |
|------------|--------------------|----------------|-------------|-------------------|---------------|--------------|------------------|----------|
| 10920.00†  | 90.000             | 267.928        | 7072.00     | 2946.47           | -1095.19      | -2828.56     | 0.00             |          |
| 11020.00†  | 90.000             | 267.928        | 7072.00     | 3046.03           | -1098.80      | -2928.50     | 0.00             |          |
| 11120.00†  | 90.000             | 267.928        | 7072.00     | 3145.60           | -1102.42      | -3028.43     | 0.00             |          |
| 11220.00†  | 90.000             | 267.928        | 7072.00     | 3245.16           | -1106.03      | -3128.37     | 0.00             |          |
| 11320.00†  | 90.000             | 267.928        | 7072.00     | 3344.72           | -1109.65      | -3228.30     | 0.00             |          |
| 11420.00†  | 90.000             | 267.928        | 7072.00     | 3444.29           | -1113.26      | -3328.24     | 0.00             |          |
| 11520.00†  | 90.000             | 267.928        | 7072.00     | 3543.85           | -1116.88      | -3428.17     | 0.00             |          |
| 11620.00†  | 90.000             | 267.928        | 7072.00     | 3643.41           | -1120.50      | -3528.10     | 0.00             |          |
| 11720.00†  | 90.000             | 267.928        | 7072.00     | 3742.97           | -1124.11      | -3628.04     | 0.00             |          |
| 11820.00†  | 90.000             | 267.928        | 7072.00     | 3842.54           | -1127.73      | -3727.97     | 0.00             |          |
| 11920.00†  | 90.000             | 267.928        | 7072.00     | 3942.10           | -1131.34      | -3827.91     | 0.00             |          |
| 12020.00†  | 90.000             | 267.928        | 7072.00     | 4041.66           | -1134.96      | -3927.84     | 0.00             |          |
| 12120.00†  | 90.000             | 267.928        | 7072.00     | 4141.22           | -1138.57      | -4027.78     | 0.00             |          |
| 12220.00†  | 90.000             | 267.928        | 7072.00     | 4240.79           | -1142.19      | -4127.71     | 0.00             |          |
| 12320.00†  | 90.000             | 267.928        | 7072.00     | 4340.35           | -1145.81      | -4227.65     | 0.00             |          |
| 12420.00†  | 90.000             | 267.928        | 7072.00     | 4439.91           | -1149.42      | -4327.58     | 0.00             |          |
| 12520.00†  | 90.000             | 267.928        | 7072.00     | 4539.47           | -1153.04      | -4427.52     | 0.00             |          |
| 12620.00†  | 90.000             | 267.928        | 7072.00     | 4639.04           | -1156.65      | -4527.45     | 0.00             |          |
| 12720.00†  | 90.000             | 267.928        | 7072.00     | 4738.60           | -1160.27      | -4627.39     | 0.00             |          |
| 12820.00†  | 90.000             | 267.928        | 7072.00     | 4838.16           | -1163.88      | -4727.32     | 0.00             |          |
| 12920.00†  | 90.000             | 267.928        | 7072.00     | 4937.72           | -1167.50      | -4827.25     | 0.00             |          |
| 13020.00†  | 90.000             | 267.928        | 7072.00     | 5037.29           | -1171.11      | -4927.19     | 0.00             |          |
| 13120.00†  | 90.000             | 267.928        | 7072.00     | 5136.85           | -1174.73      | -5027.12     | 0.00             |          |
| 13220.00†  | 90.000             | 267.928        | 7072.00     | 5236.41           | -1178.35      | -5127.06     | 0.00             |          |
| 13320.00†  | 90.000             | 267.928        | 7072.00     | 5335.97           | -1181.96      | -5226.99     | 0.00             |          |
| 13420.00†  | 90.000             | 267.928        | 7072.00     | 5435.54           | -1185.58      | -5326.93     | 0.00             |          |
| 13520.00†  | 90.000             | 267.928        | 7072.00     | 5535.10           | -1189.19      | -5426.86     | 0.00             |          |
| 13620.00†  | 90.000             | 267.928        | 7072.00     | 5634.66           | -1192.81      | -5526.80     | 0.00             |          |
| 13720.00†  | 90.000             | 267.928        | 7072.00     | 5734.23           | -1196.42      | -5626.73     | 0.00             |          |
| 13820.00†  | 90.000             | 267.928        | 7072.00     | 5833.79           | -1200.04      | -5726.67     | 0.00             |          |



# Planned Wellpath Report

AG 5C-31-L REV-B.0 PWP

Page 7 of 10



## REFERENCE WELLPATH IDENTIFICATION

|          |                                |          |   |
|----------|--------------------------------|----------|---|
| Operator | SYNERGY RESOURCES CORPORATION  | Slot     | SLOT#09 AG 5C-31-L (994'FNL & 558'FEL SEC 32) |
| Area     | COLORADO                       | Well     | AG 5C-31-L                                    |
| Field    | WELD COUNTY (NAD83,TRUE NORTH) | Wellbore | AG 5C-31-L PWB                                |
| Facility | SEC.32-T06N-R66W               |          |   |

## WELLPATH DATA (199 stations) † = interpolated/extrapolated station

| MD<br>[ft] | Inclination<br>[°] | Azimuth<br>[°] | TVD<br>[ft] | Vert Sect<br>[ft] | North<br>[ft] | East<br>[ft] | DLS<br>[°/100ft] | Comments |
|------------|--------------------|----------------|-------------|-------------------|---------------|--------------|------------------|----------|
| 13920.00†  | 90.000             | 267.928        | 7072.00     | 5933.35           | -1203.66      | -5826.60     | 0.00             |          |
| 14020.00†  | 90.000             | 267.928        | 7072.00     | 6032.91           | -1207.27      | -5926.54     | 0.00             |          |
| 14120.00†  | 90.000             | 267.928        | 7072.00     | 6132.48           | -1210.89      | -6026.47     | 0.00             |          |
| 14220.00†  | 90.000             | 267.928        | 7072.00     | 6232.04           | -1214.50      | -6126.40     | 0.00             |          |
| 14320.00†  | 90.000             | 267.928        | 7072.00     | 6331.60           | -1218.12      | -6226.34     | 0.00             |          |
| 14420.00†  | 90.000             | 267.928        | 7072.00     | 6431.16           | -1221.73      | -6326.27     | 0.00             |          |
| 14520.00†  | 90.000             | 267.928        | 7072.00     | 6530.73           | -1225.35      | -6426.21     | 0.00             |          |
| 14620.00†  | 90.000             | 267.928        | 7072.00     | 6630.29           | -1228.96      | -6526.14     | 0.00             |          |
| 14720.00†  | 90.000             | 267.928        | 7072.00     | 6729.85           | -1232.58      | -6626.08     | 0.00             |          |
| 14820.00†  | 90.000             | 267.928        | 7072.00     | 6829.41           | -1236.20      | -6726.01     | 0.00             |          |
| 14920.00†  | 90.000             | 267.928        | 7072.00     | 6928.98           | -1239.81      | -6825.95     | 0.00             |          |
| 15020.00†  | 90.000             | 267.928        | 7072.00     | 7028.54           | -1243.43      | -6925.88     | 0.00             |          |
| 15120.00†  | 90.000             | 267.928        | 7072.00     | 7128.10           | -1247.04      | -7025.82     | 0.00             |          |
| 15220.00†  | 90.000             | 267.928        | 7072.00     | 7227.66           | -1250.66      | -7125.75     | 0.00             |          |
| 15320.00†  | 90.000             | 267.928        | 7072.00     | 7327.23           | -1254.27      | -7225.69     | 0.00             |          |
| 15420.00†  | 90.000             | 267.928        | 7072.00     | 7426.79           | -1257.89      | -7325.62     | 0.00             |          |
| 15520.00†  | 90.000             | 267.928        | 7072.00     | 7526.35           | -1261.51      | -7425.55     | 0.00             |          |
| 15620.00†  | 90.000             | 267.928        | 7072.00     | 7625.91           | -1265.12      | -7525.49     | 0.00             |          |
| 15720.00†  | 90.000             | 267.928        | 7072.00     | 7725.48           | -1268.74      | -7625.42     | 0.00             |          |
| 15820.00†  | 90.000             | 267.928        | 7072.00     | 7825.04           | -1272.35      | -7725.36     | 0.00             |          |
| 15920.00†  | 90.000             | 267.928        | 7072.00     | 7924.60           | -1275.97      | -7825.29     | 0.00             |          |
| 16020.00†  | 90.000             | 267.928        | 7072.00     | 8024.17           | -1279.58      | -7925.23     | 0.00             |          |
| 16120.00†  | 90.000             | 267.928        | 7072.00     | 8123.73           | -1283.20      | -8025.16     | 0.00             |          |
| 16220.00†  | 90.000             | 267.928        | 7072.00     | 8223.29           | -1286.81      | -8125.10     | 0.00             |          |
| 16320.00†  | 90.000             | 267.928        | 7072.00     | 8322.85           | -1290.43      | -8225.03     | 0.00             |          |
| 16420.00†  | 90.000             | 267.928        | 7072.00     | 8422.42           | -1294.05      | -8324.97     | 0.00             |          |
| 16520.00†  | 90.000             | 267.928        | 7072.00     | 8521.98           | -1297.66      | -8424.90     | 0.00             |          |
| 16620.00†  | 90.000             | 267.928        | 7072.00     | 8621.54           | -1301.28      | -8524.84     | 0.00             |          |
| 16720.00†  | 90.000             | 267.928        | 7072.00     | 8721.10           | -1304.89      | -8624.77     | 0.00             |          |
| 16820.00†  | 90.000             | 267.928        | 7072.00     | 8820.67           | -1308.51      | -8724.70     | 0.00             |          |



# Planned Wellpath Report

AG 5C-31-L REV-B.0 PWP

Page 8 of 10



## REFERENCE WELLPATH IDENTIFICATION

|          |                                |          |   |
|----------|--------------------------------|----------|---|
| Operator | SYNERGY RESOURCES CORPORATION  | Slot     | SLOT#09 AG 5C-31-L (994'FNL & 558'FEL SEC 32) |
| Area     | COLORADO                       | Well     | AG 5C-31-L                                    |
| Field    | WELD COUNTY (NAD83,TRUE NORTH) | Wellbore | AG 5C-31-L PWB                                |
| Facility | SEC.32-T06N-R66W               |          |   |

## WELLPATH DATA (199 stations) † = interpolated/extrapolated station

| MD [ft]   | Inclination [°] | Azimuth [°] | TVD [ft]             | Vert Sect [ft] | North [ft] | East [ft] | DLS [°/100ft] | Comments       |
|-----------|-----------------|-------------|----------------------|----------------|------------|-----------|---------------|----------------|
| 16920.00† | 90.000          | 267.928     | 7072.00              | 8920.23        | -1312.12   | -8824.64  | 0.00          |                |
| 17020.00† | 90.000          | 267.928     | 7072.00              | 9019.79        | -1315.74   | -8924.57  | 0.00          |                |
| 17120.00† | 90.000          | 267.928     | 7072.00              | 9119.35        | -1319.36   | -9024.51  | 0.00          |                |
| 17220.00† | 90.000          | 267.928     | 7072.00              | 9218.92        | -1322.97   | -9124.44  | 0.00          |                |
| 17320.00† | 90.000          | 267.928     | 7072.00              | 9318.48        | -1326.59   | -9224.38  | 0.00          |                |
| 17420.00† | 90.000          | 267.928     | 7072.00              | 9418.04        | -1330.20   | -9324.31  | 0.00          |                |
| 17520.00† | 90.000          | 267.928     | 7072.00              | 9517.60        | -1333.82   | -9424.25  | 0.00          |                |
| 17620.00† | 90.000          | 267.928     | 7072.00              | 9617.17        | -1337.43   | -9524.18  | 0.00          |                |
| 17720.00† | 90.000          | 267.928     | 7072.00              | 9716.73        | -1341.05   | -9624.12  | 0.00          |                |
| 17820.00† | 90.000          | 267.928     | 7072.00              | 9816.29        | -1344.66   | -9724.05  | 0.00          |                |
| 17920.00† | 90.000          | 267.928     | 7072.00              | 9915.85        | -1348.28   | -9823.99  | 0.00          |                |
| 18020.00† | 90.000          | 267.928     | 7072.00              | 10015.42       | -1351.90   | -9923.92  | 0.00          |                |
| 18120.00† | 90.000          | 267.928     | 7072.00              | 10114.98       | -1355.51   | -10023.85 | 0.00          |                |
| 18220.00† | 90.000          | 267.928     | 7072.00              | 10214.54       | -1359.13   | -10123.79 | 0.00          |                |
| 18320.00† | 90.000          | 267.928     | 7072.00              | 10314.11       | -1362.74   | -10223.72 | 0.00          |                |
| 18420.00† | 90.000          | 267.928     | 7072.00              | 10413.67       | -1366.36   | -10323.66 | 0.00          |                |
| 18520.00† | 90.000          | 267.928     | 7072.00              | 10513.23       | -1369.97   | -10423.59 | 0.00          |                |
| 18620.00† | 90.000          | 267.928     | 7072.00              | 10612.79       | -1373.59   | -10523.53 | 0.00          |                |
| 18627.27  | 90.000          | 267.928     | 7072.00 <sup>2</sup> | 10620.03       | -1373.85   | -10530.79 | 0.00          | End of Tangent |

## HOLE & CASING SECTIONS - Ref Wellbore: AG 5C-31-L PWB Ref Wellpath: AG 5C-31-L REV-B.0 PWP

| String/Diameter  | Start MD [ft] | End MD [ft] | Interval [ft] | Start TVD [ft] | End TVD [ft] | Start N/S [ft] | Start E/W [ft] | End N/S [ft] | End E/W [ft] |
|------------------|---------------|-------------|---------------|----------------|--------------|----------------|----------------|--------------|--------------|
| 13.5in Open Hole | 20.00         | 1800.00     | 1780.00       | 20.00          | 1768.28      | 0.00           | 0.00           | -178.37      | 234.75       |
| 8.5in Open Hole  | 1800.00       | 18627.27    | 16827.27      | 1768.28        | 7072.00      | -178.37        | 234.75         | -1373.85     | -10530.79    |



# Planned Wellpath Report

AG 5C-31-L REV-B.0 PWP

Page 9 of 10



## REFERENCE WELLPATH IDENTIFICATION

|          |                                |          |   |
|----------|--------------------------------|----------|---|
| Operator | SYNERGY RESOURCES CORPORATION  | Slot     | SLOT#09 AG 5C-31-L (994'FNL & 558'FEL SEC 32) |
| Area     | COLORADO                       | Well     | AG 5C-31-L                                    |
| Field    | WELD COUNTY (NAD83,TRUE NORTH) | Wellbore | AG 5C-31-L PWB                                |
| Facility | SEC.32-T06N-R66W               |          |   |

## TARGETS

| Name   | MD<br>[ft] | TVD<br>[ft] | North<br>[ft] | East<br>[ft] | Grid East<br>[US ft] | Grid North<br>[US ft] | Latitude       | Longitude       | Shape   |
|--|------------|-------------|---------------|--------------|----------------------|-----------------------|----------------|-----------------|---------|
| SEC.31-T06N-R66W   |            | -20.00      | 116.88        | 108.85       | 3196477.05           | 1407381.48            | 40°26'58.261"N | 104°47'38.472"W | polygon |
| SEC.32-T06N-R66W   |            | -20.00      | 116.88        | 108.85       | 3196477.05           | 1407381.48            | 40°26'58.261"N | 104°47'38.472"W | polygon |
| 2) AG 5C-31-L BHL REV-1 ON<br>PLAT (CDLL, 1926'FNL & 75'FWL<br>SEC 31) | 18627.27   | 7072.00     | -1373.85      | -10530.79    | 3185850.02           | 1405806.20            | 40°26'43.508"N | 104°49'56.086"W | circle  |
| 1) AG 5C-31-L TOP OF PROD<br>(1981'FNL & 75'FEL SEC 32)                | 7605.52    | 7072.00     | -975.35       | 483.75       | 3196860.61           | 1406292.31            | 40°26'47.468"N | 104°47'33.623"W | circle  |

## SURVEY PROGRAM - Ref Wellbore: AG 5C-31-L PWB Ref Wellpath: AG 5C-31-L REV-B.0 PWP

| Start MD<br>[ft] | End MD<br>[ft] | Positional Uncertainty Model  | Log<br>Name/Comment | Wellbore          |
|------------------|----------------|---|---------------------|-------------------|
| 20.00            | 1800.00        | Custom BHI NaviTrak (Standard Rotating+Axial Corr) (Rockies 0.03Gt model) |                     | AG 5C-31-L<br>PWB |
| 1800.00          | 18628.00       | Custom BHI AutoTrak Curve (Short) (Rockies 0.03Gt model)                  |                     | AG 5C-31-L<br>PWB |



# Planned Wellpath Report

AG 5C-31-L REV-B.0 PWP

Page 10 of 10



## REFERENCE WELLPATH IDENTIFICATION

|          |                                |          |   |
|----------|--------------------------------|----------|---|
| Operator | SYNERGY RESOURCES CORPORATION  | Slot     | SLOT#09 AG 5C-31-L (994'FNL & 558'FEL SEC 32) |
| Area     | COLORADO                       | Well     | AG 5C-31-L                                    |
| Field    | WELD COUNTY (NAD83,TRUE NORTH) | Wellbore | AG 5C-31-L PWB                                |
| Facility | SEC.32-T06N-R66W               |          |   |

## WELLPATH COMMENTS

| MD<br>[ft] | Inclination<br>[°] | Azimuth<br>[°] | TVD<br>[ft] | Comment        |
|------------|--------------------|----------------|-------------|----------------|
| 6893.83    | 27.253             | 250.780        | 6718.00     | SHARON SPRINGS |
| 6935.00    | 30.776             | 253.154        | 6754.00     | NIO-A          |
| 7089.06    | 44.199             | 258.943        | 6876.00     | NIO-B          |
| 7199.03    | 53.897             | 261.569        | 6948.00     | NIO-C          |
| 7401.64    | 71.867             | 265.077        | 7040.00     | FORT HAYS      |
| 7491.88    | 79.890             | 266.376        | 7062.00     | CODELL         |