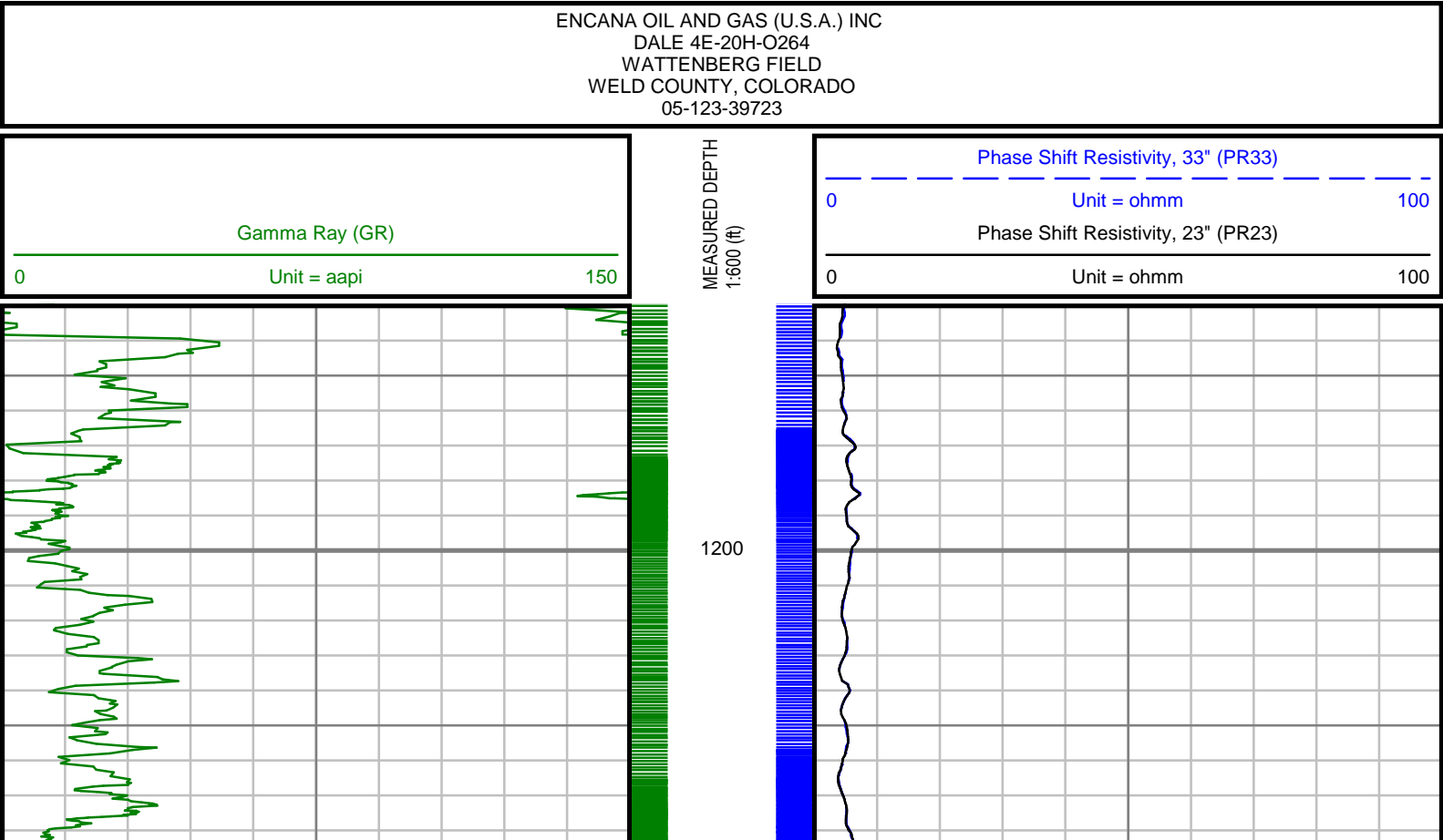
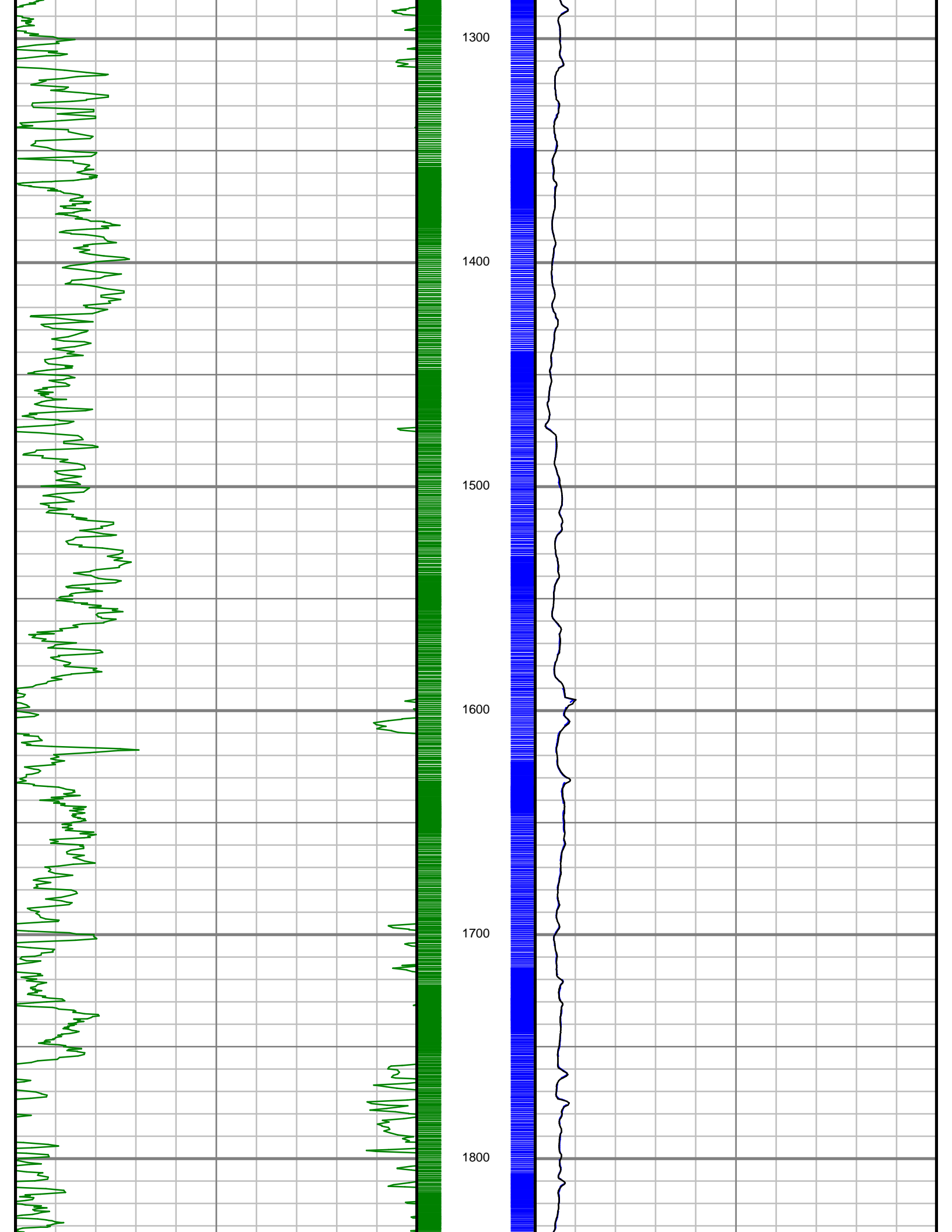


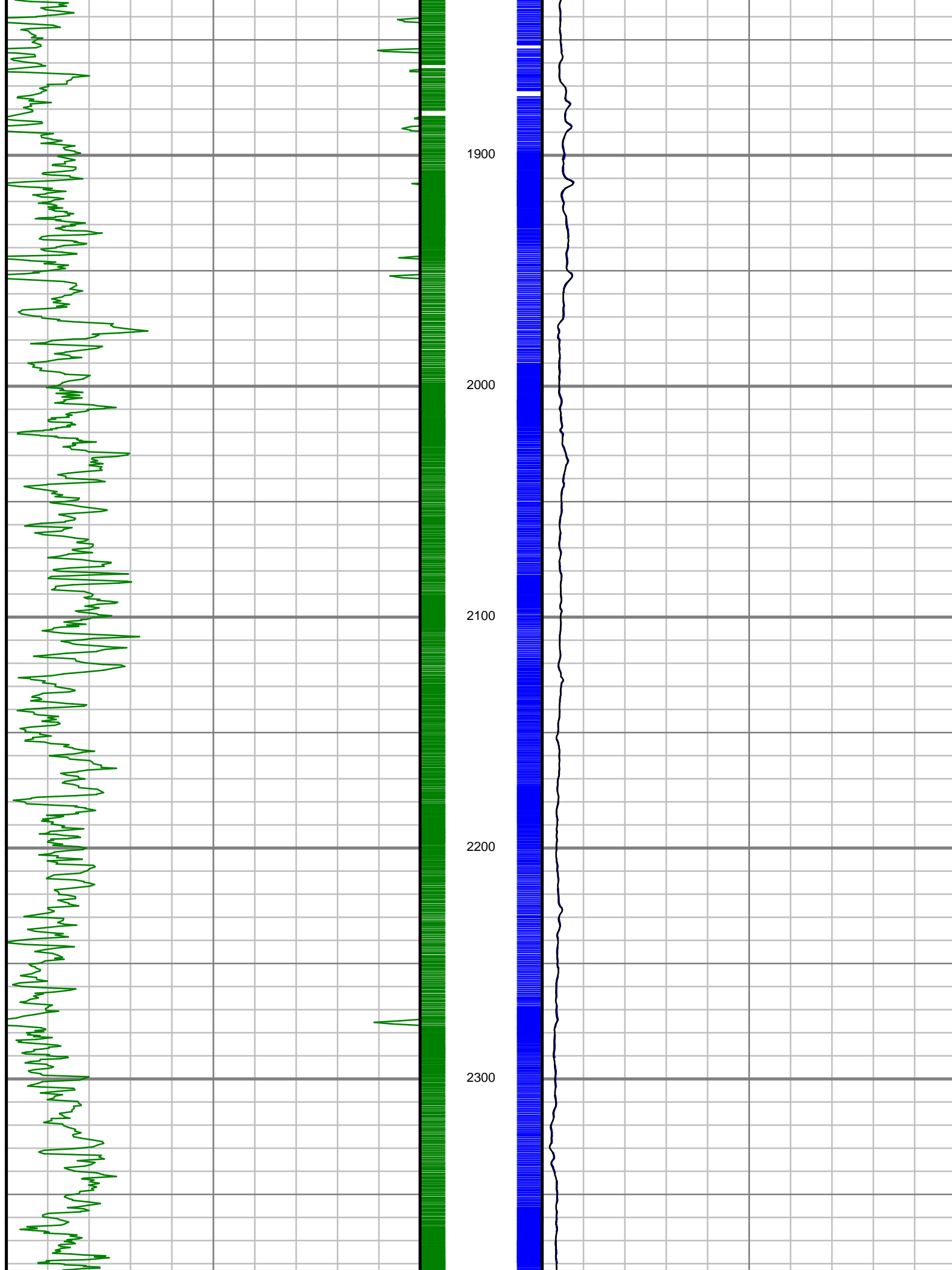


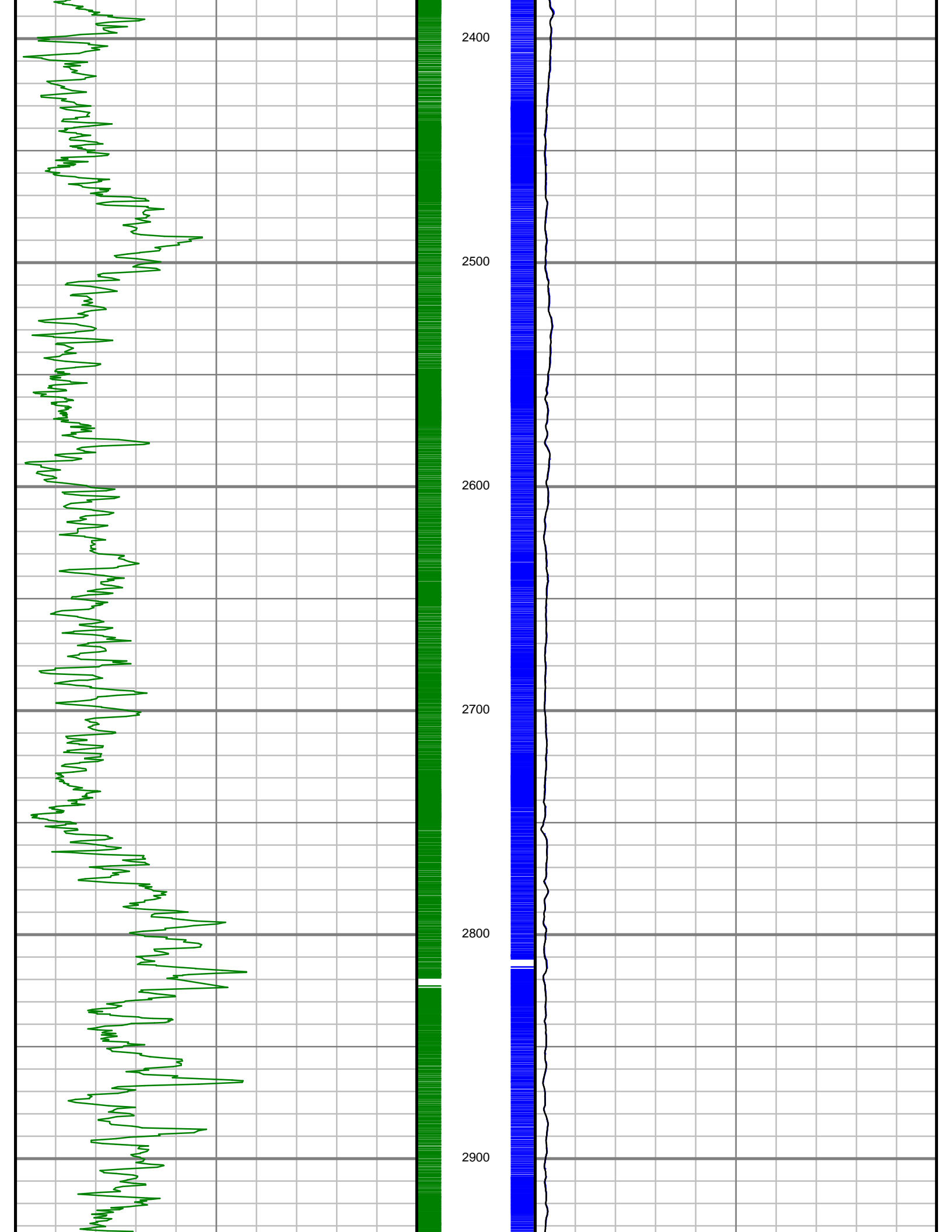
Remarks
ENCANA OIL & GAS (U.S.A.) INC PRODUCTION AFE# 14182125
SCIENTIFIC DRILLING INTERNATIONAL JOB# 186379, 210062
ALL REFERENCES IN THE DEPTH TRACK ARE AT BIT DEPTH.
ALL DATA IS MEMORY DATA UNLESS STATED OTHERWISE.
FLAT AVERAGE FILTER OF 1.00 FT APPLIED TO GAMMA RAY CURVE
FLAT AVERAGE FILTER OF 1.00 FT APPLIED TO PHASE SHIFT RESISTIVITY, 33" CURVE
FLAT AVERAGE FILTER OF 1.00 FT APPLIED TO PHASE SHIFT RESISTIVITY, 23" CURVE
RUN # 1: MWD / DIRECTIONAL RUN
SENSORS S/N: PULSER = 890 / MWD EYE = 809 / GYRO = 034
BIT TO SENSOR OFFSET: GYRO SURVEY = 44.64 FT.
RUN # 2: MWD / GAMMA RAY / PROPAGATION RESISTIVITY LOGGING RUN
SENSORS S/N: PULSER = 128-028 / CONT = 126 / MWD EYE = 0213 / PRT = 322 / GAMMA RAY = 1271
BIT TO SENSOR OFFSETS: SURVEY = 57.16 FT. / RESISTIVITY = 46.50 FT. / GAMMA RAY = 37.99 FT.
MNEMONICS LIST:
GR = GAMMA RAY
PR33 = PHASE SHIFT RESISTIVITY, 33"
PR23 = PHASE SHIFT RESISTIVITY, 23"

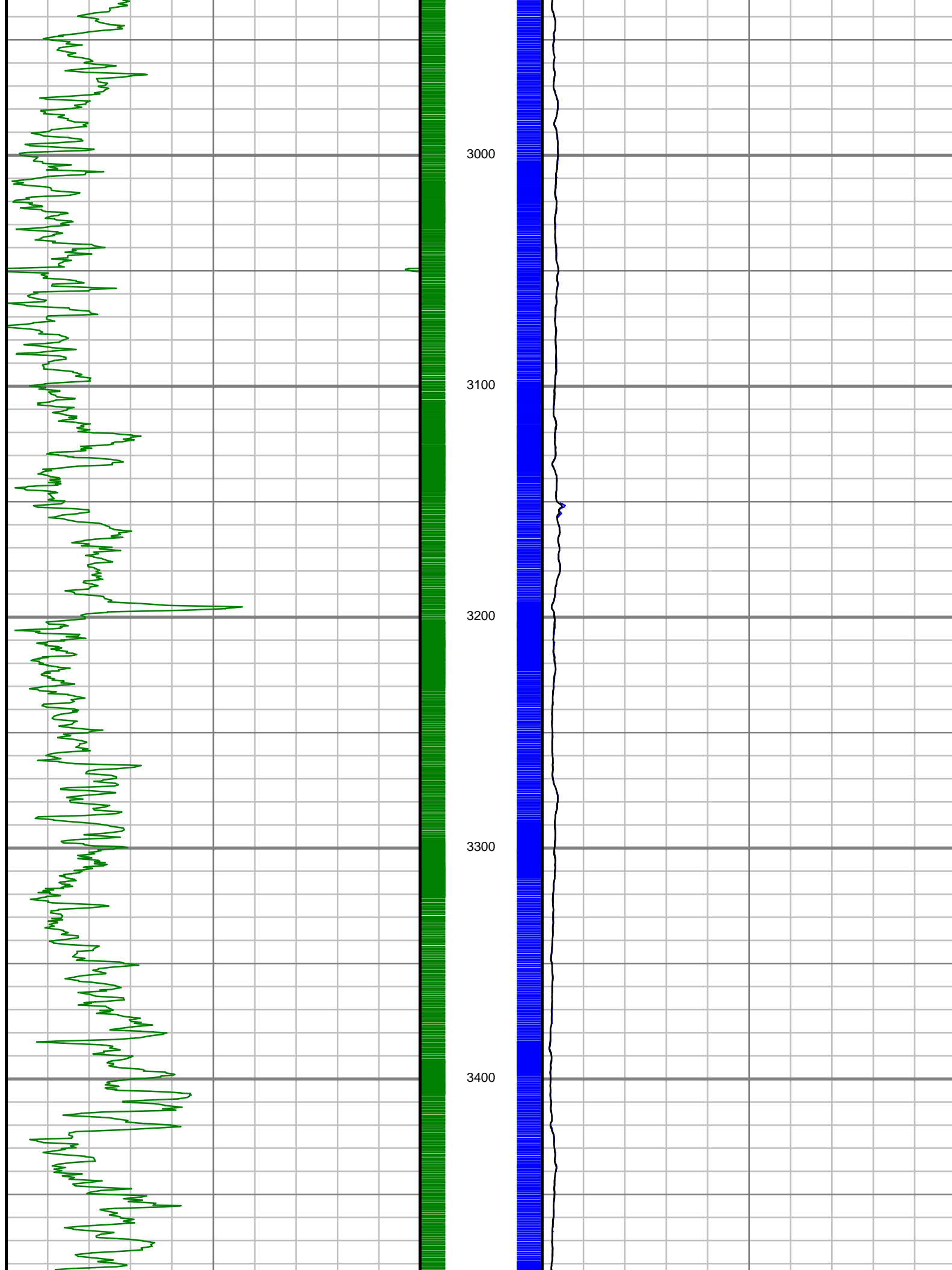
All interpretations are opinions based on inferences from electrical or other measurements and we cannot, and do not guarantee the accuracy or correctness of any interpretations, and we shall not, except in the case of gross or willful negligence on our part, be liable or responsible for any loss, costs, damages or expenses incurred or sustained by anyone resulting from any interpretation made by any of our officers, agents or employees. These interpretations are also subject to our general terms and conditions as set out in our current price schedule.

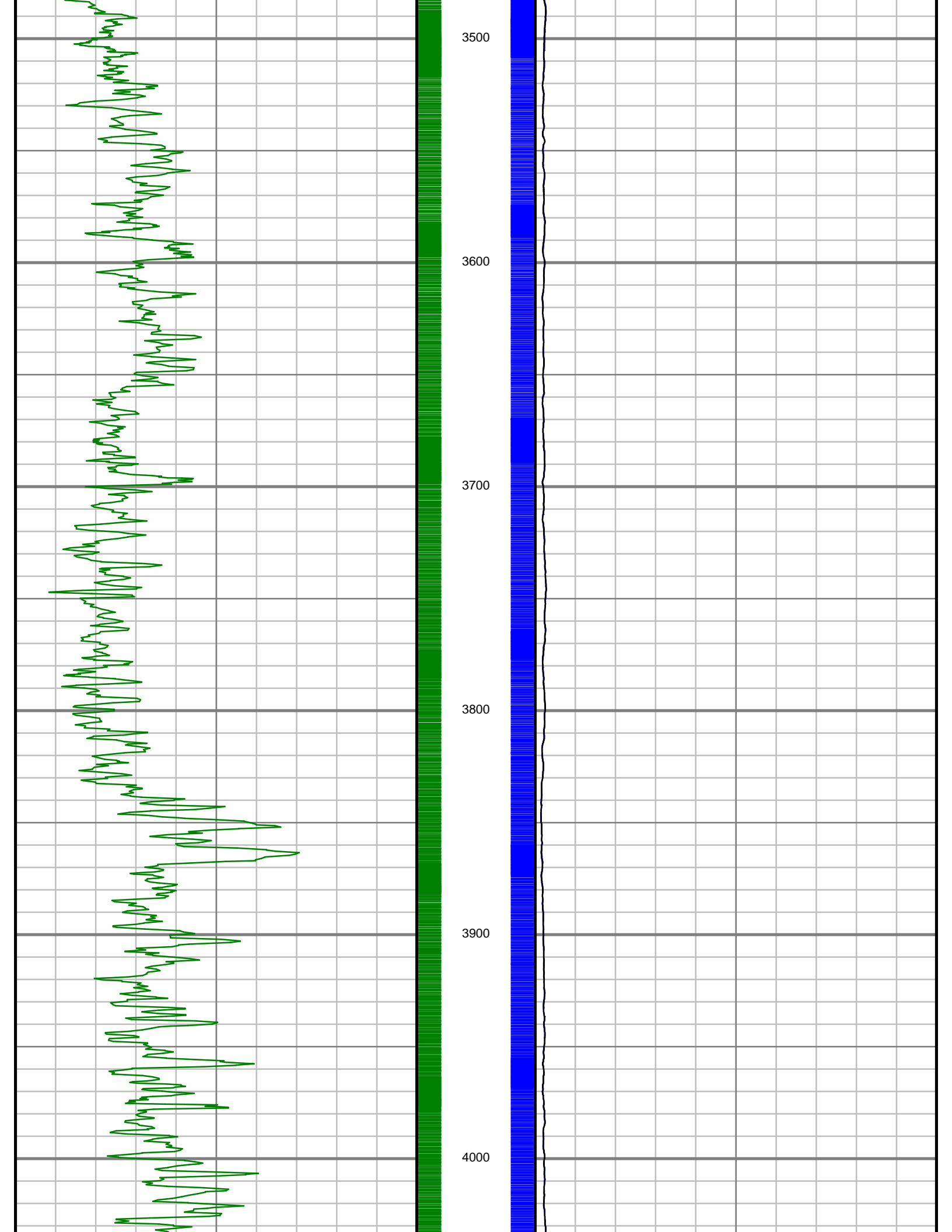


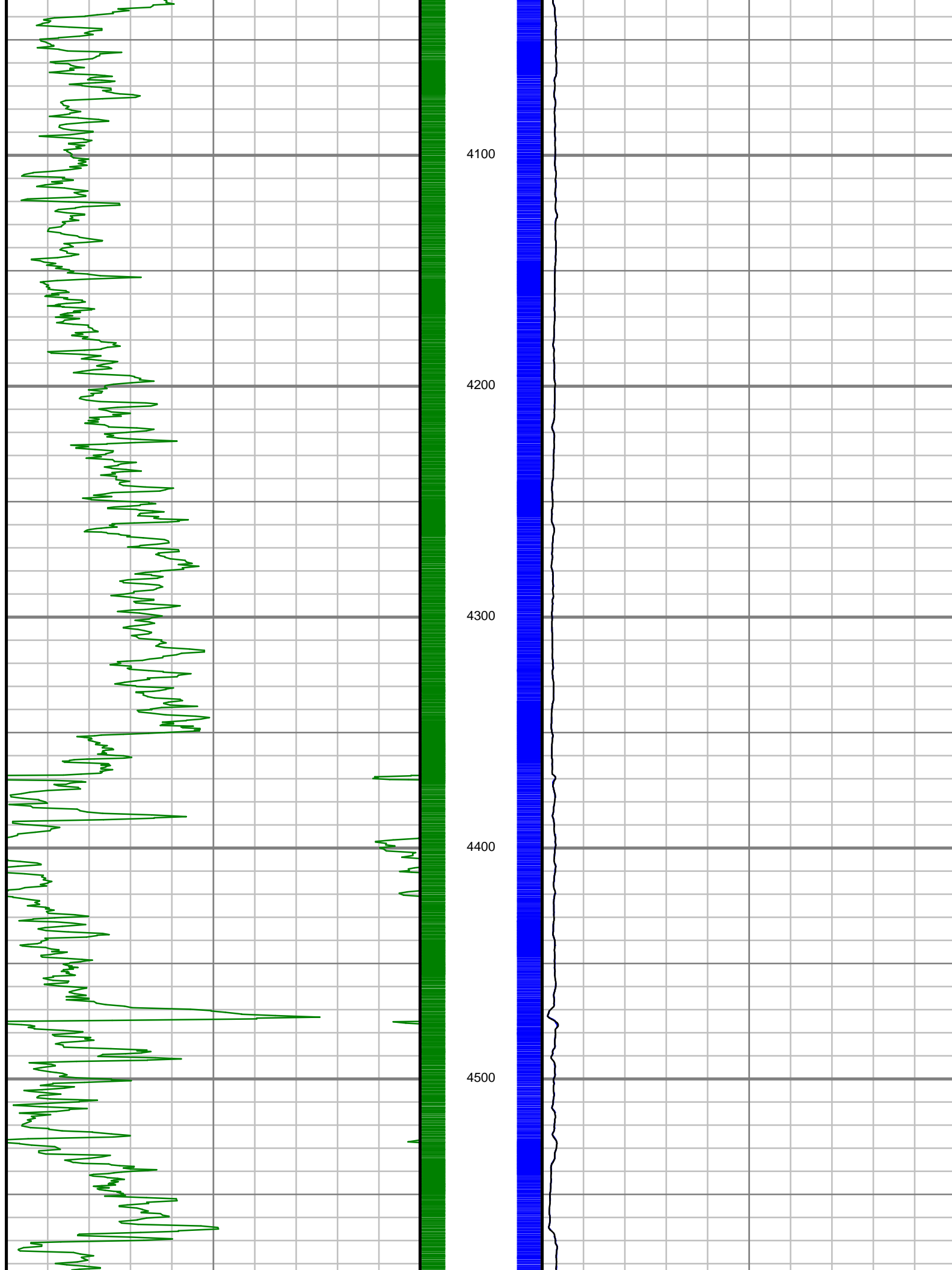




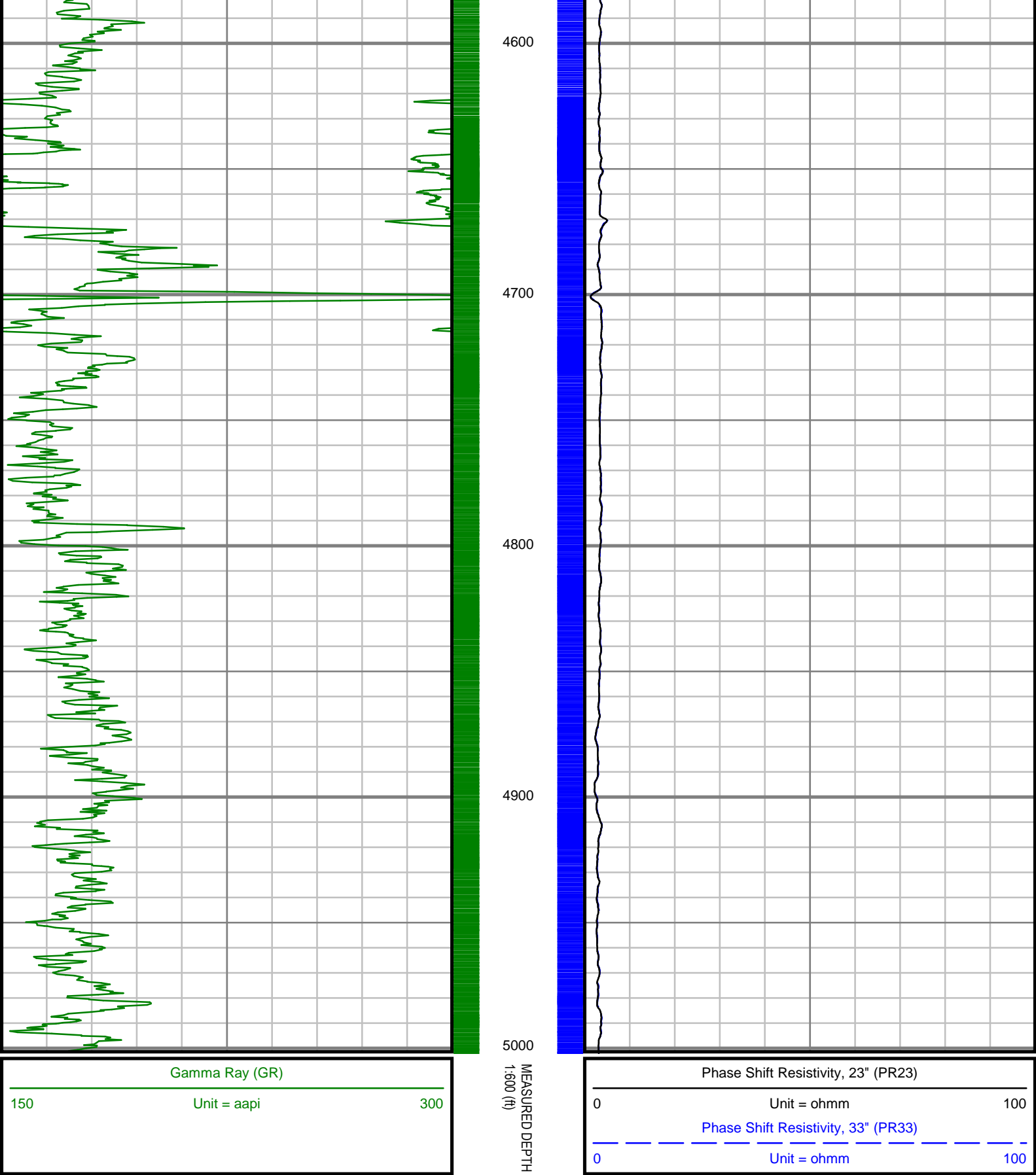












Gamma Ray (GR)  
Unit = aapi  
150 300

Phase Shift Resistivity, 23" (PR23)  
Unit = ohmm  
0 100  
Phase Shift Resistivity, 33" (PR33)  
Unit = ohmm  
0 100



PROPAGATION RESISTIVITY  
GAMMA RAY

2" = 100' FEET MD