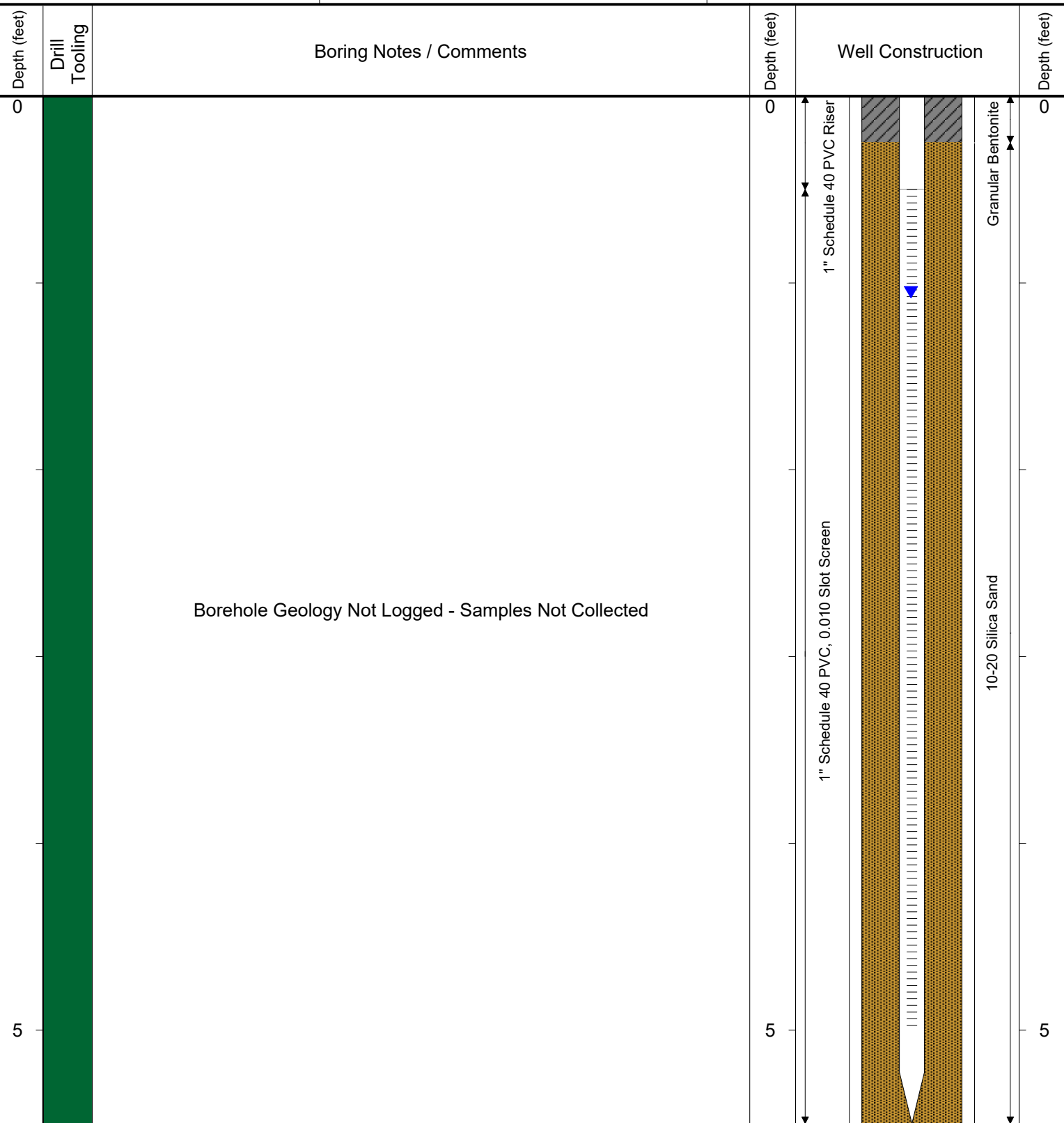




6899 Pecos Street, Unit C
Denver, Colorado 80221

CLIENT: Kerr-McGee Oil and Gas Onshore, LP	Opatril Unit 63N67W12SESE
DRILLED BY: Clayton Robertson	
PROJECT MANAGER: Robert Cornez	BORING / WELL ID: BH01
DRILLING CONTRACTOR: Tasman Geosciences, Inc.	
DRILLING EQUIPMENT: AMS PowerProbe	SURFACE COMPLETION: Stick Up
DRILL BIT SIZE (INCHES): 2-3/8"	LATITUDE (NAD 83): 40.235282
DATE STARTED - COMPLETED: 10/23/2014	LONGITUDE (NAD 83): -104.833831
TOTAL WELL DEPTH (FT. BGS): 5.5	CASING ELEVATION (FT. AMSL): 4784.19
DEPTH TO WATER (FT. BGS): 1.05 (8/10/15) ▼	GROUND ELEVATION (FT. AMSL): 4780.25



Drilling / Sample Method:

- Solid-Stem Auger
- Perforated Injection Tool
- Direct Push - Expendable Well Tip



6899 Pecos Street, Unit C
Denver, Colorado 80221

CLIENT: Kerr-McGee Oil and Gas Onshore, LP

DRILLED BY: Clayton Robertson

PROJECT MANAGER: Robert Cornez

DRILLING CONTRACTOR: Tasman Geosciences, Inc.

DRILLING EQUIPMENT: AMS PowerProbe

DRILL BIT SIZE (INCHES): 2-3/8"

DATE STARTED - COMPLETED: 10/23/2014

TOTAL WELL DEPTH (FT. BGS): 5.5

DEPTH TO WATER (FT. BGS): 1.19 (8/10/15)

Opatril Unit 63N67W12SESE

BORING / WELL ID: BH02

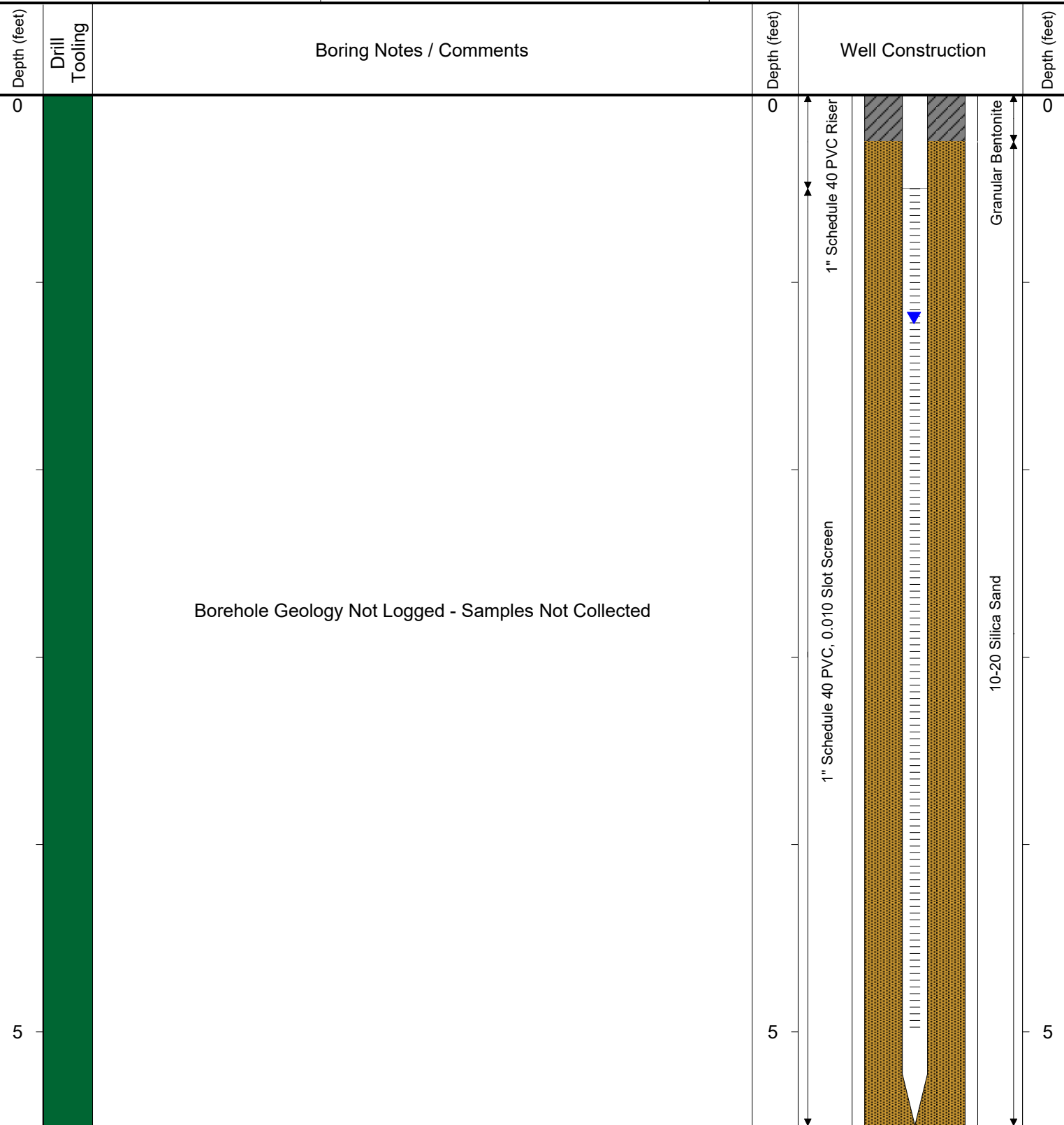
SURFACE COMPLETION: Stick Up

LATITUDE (NAD 83): 40.23524

LONGITUDE (NAD 83): -104.833941

CASING ELEVATION (FT. AMSL): 4784.1

GROUND ELEVATION (FT. AMSL): 4780.37



Drilling / Sample Method:

Solid-Stem Auger

Direct Push - Expendable Well Tip

Perforated Injection Tool



6899 Pecos Street, Unit C
Denver, Colorado 80221

CLIENT: Kerr-McGee Oil and Gas Onshore, LP

DRILLED BY: Clayton Robertson

PROJECT MANAGER: Robert Cornez

DRILLING CONTRACTOR: Tasman Geosciences, Inc.

DRILLING EQUIPMENT: AMS PowerProbe

DRILL BIT SIZE (INCHES): 2-3/8"

DATE STARTED - COMPLETED: 10/23/2014

TOTAL WELL DEPTH (FT. BGS): 10.5

DEPTH TO WATER (FT. BGS): 1.22 (8/10/15) ▼

Opatril Unit 63N67W12SESE

BORING / WELL ID: BH03

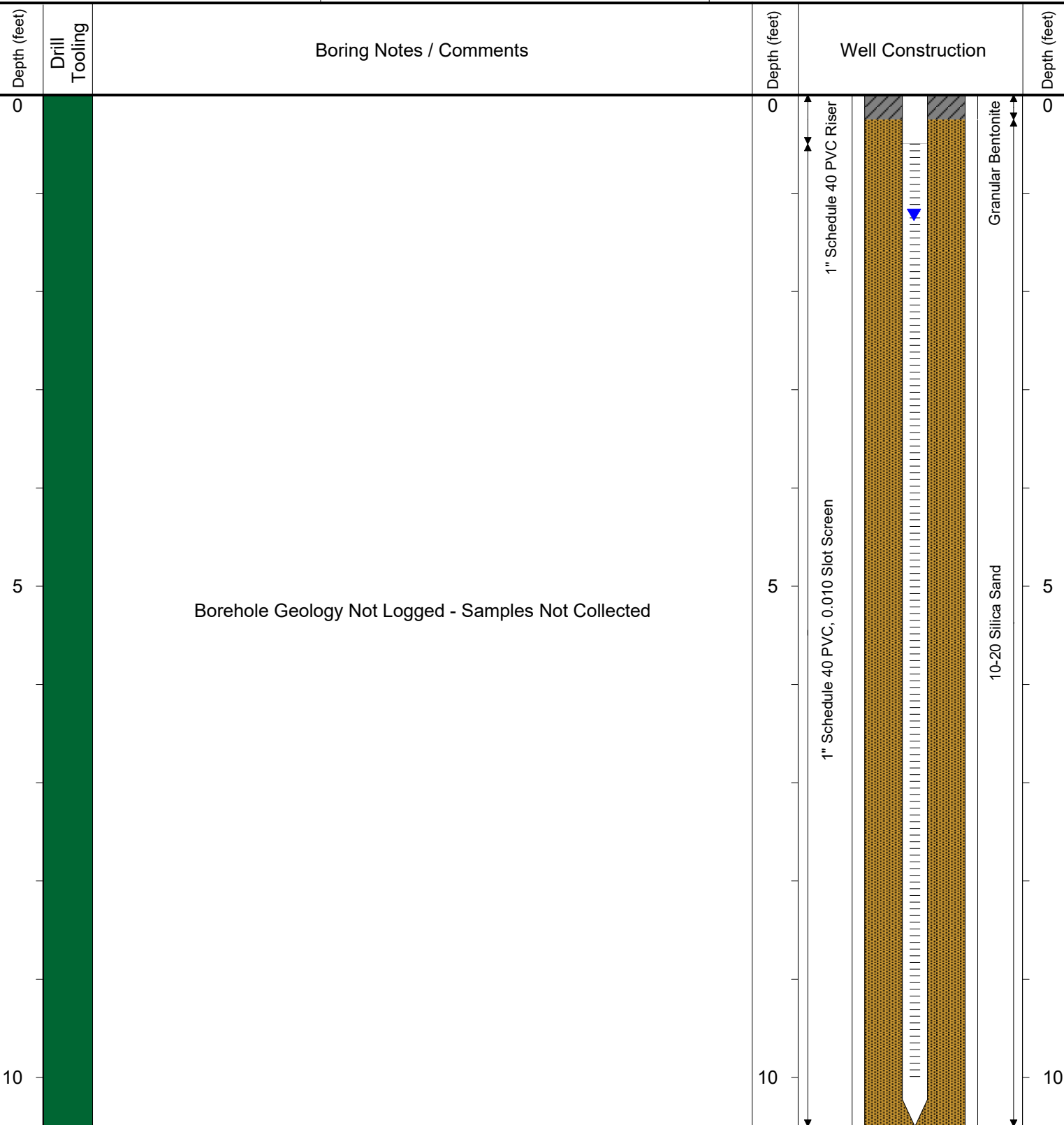
SURFACE COMPLETION: Stick Up

LATITUDE (NAD 83): 40.235305

LONGITUDE (NAD 83): -104.833955

CASING ELEVATION (FT. AMSL): 4784.09

GROUND ELEVATION (FT. AMSL): 4780.37



Drilling / Sample Method:

Solid-Stem Auger

Direct Push - Expendable Well Tip

Perforated Injection Tool



6899 Pecos Street, Unit C
Denver, Colorado 80221

CLIENT: Kerr-McGee Oil and Gas Onshore, LP

DRILLED BY: Clayton Robertson

PROJECT MANAGER: Robert Cornez

DRILLING CONTRACTOR: Tasman Geosciences, Inc.

DRILLING EQUIPMENT: AMS PowerProbe

DRILL BIT SIZE (INCHES): 2-3/8"

DATE STARTED - COMPLETED: 10/23/2014

TOTAL WELL DEPTH (FT. BGS): 5.5

DEPTH TO WATER (FT. BGS): 1.15 (8/10/15)

Opatril Unit 63N67W12SESE

BORING / WELL ID: BH04

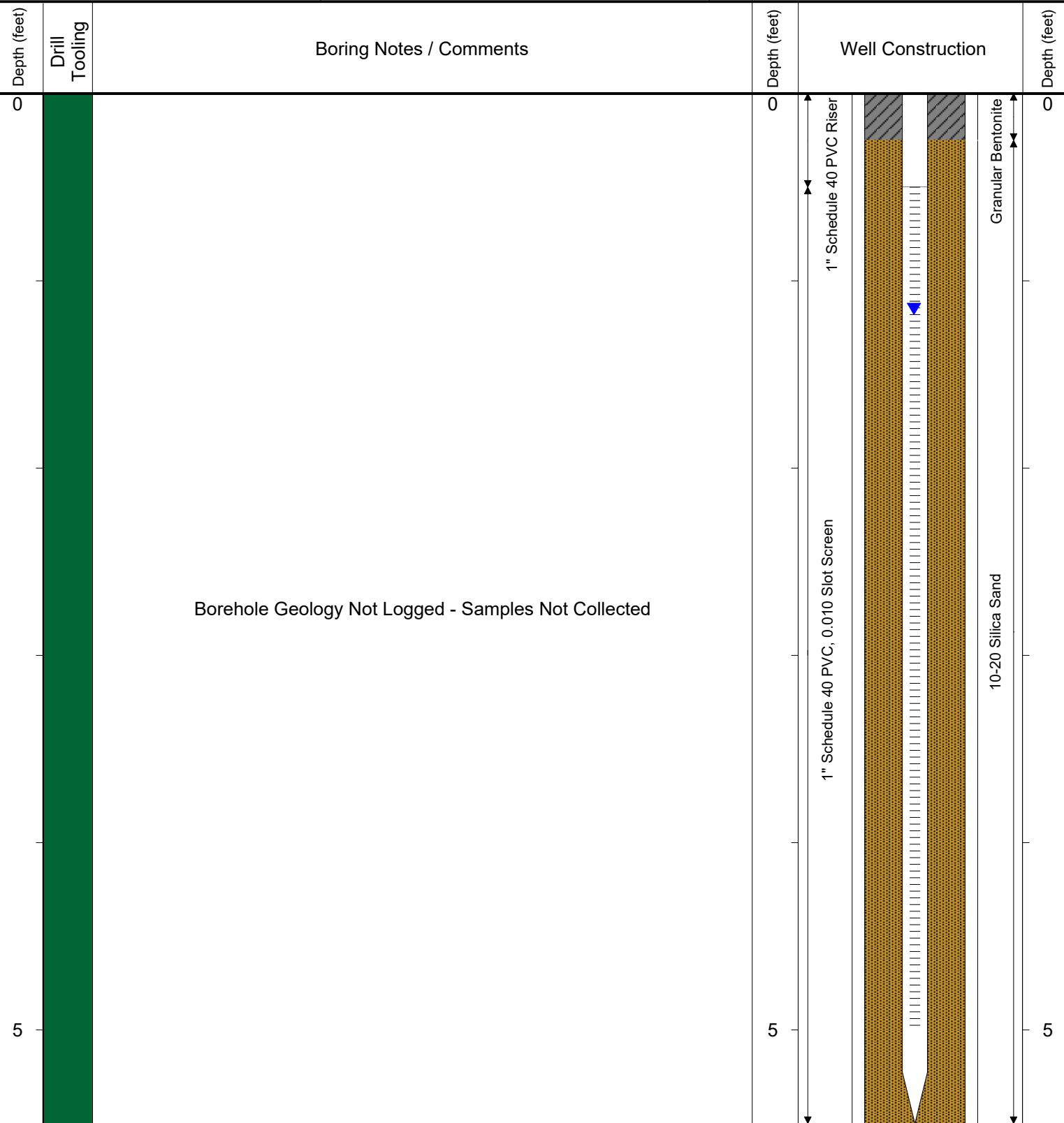
SURFACE COMPLETION: Stick Up

LATITUDE (NAD 83): 40.235364

LONGITUDE (NAD 83): -104.83391

CASING ELEVATION (FT. AMSL): 4784.16

GROUND ELEVATION (FT. AMSL): 4780.29



Drilling / Sample Method:

Solid-Stem Auger

Direct Push - Expendable Well Tip

Perforated Injection Tool



6899 Pecos Street, Unit C
Denver, Colorado 80221

CLIENT: Kerr-McGee Oil and Gas Onshore, LP

DRILLED BY: Brandon LeVasseur

PROJECT MANAGER: Robert Cornez

DRILLING CONTRACTOR: Tasman Geosciences, Inc.

DRILLING EQUIPMENT: AMS PowerProbe

DRILL BIT SIZE (INCHES): 2-3/8"

DATE STARTED - COMPLETED: 10/2/2015

TOTAL WELL DEPTH (FT. BGS): 11

DEPTH TO WATER (FT. BGS): 0.71 (11/4/15) ▼

Opatril Unit 63N67W12SESE

BORING / WELL ID: BH01X

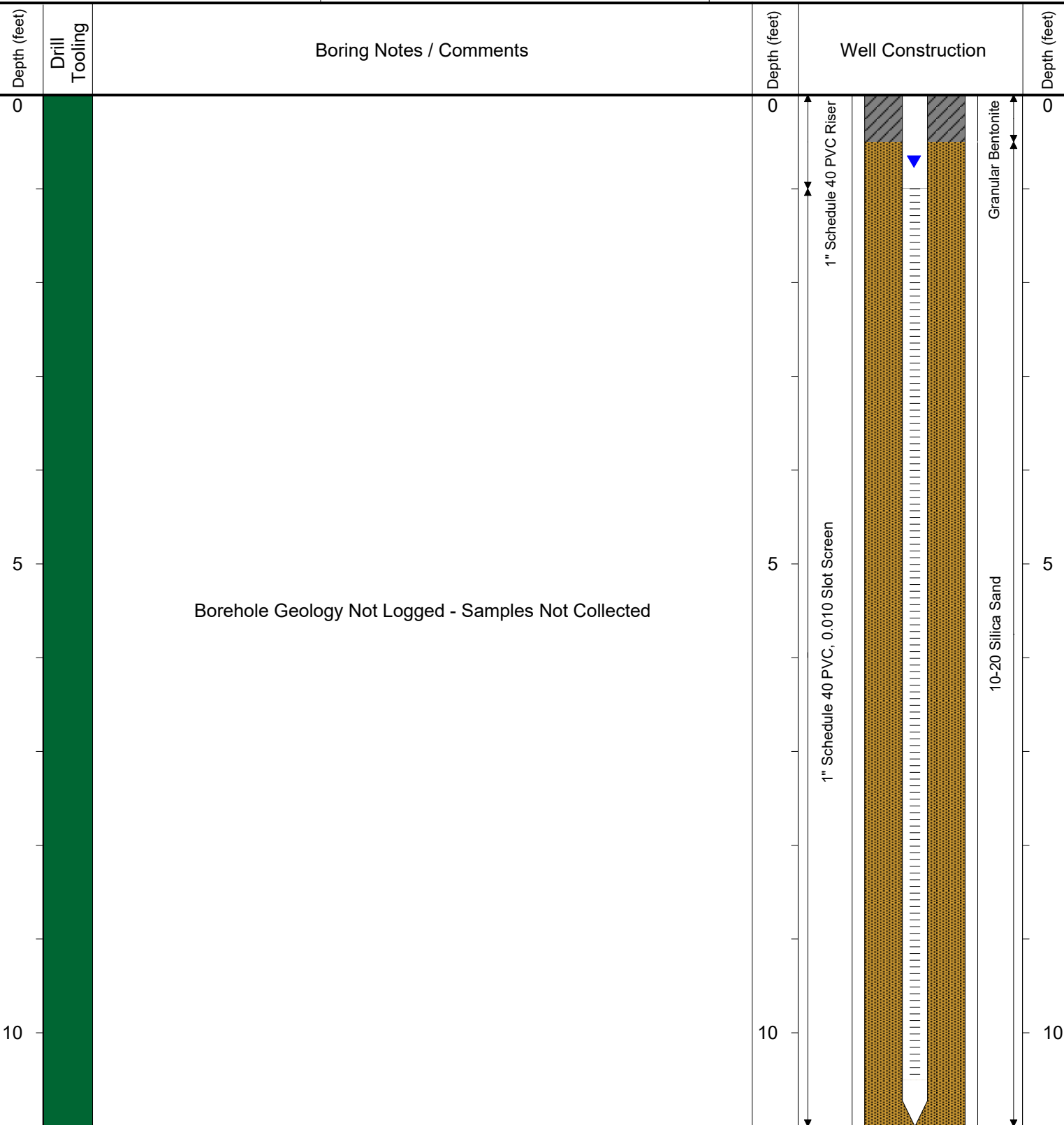
SURFACE COMPLETION: Flush Mount

LATITUDE (NAD 83): 40.235586

LONGITUDE (NAD 83): -104.833885

CASING ELEVATION (FT. AMSL): 4779.78

GROUND ELEVATION (FT. AMSL): 4780.07



Drilling / Sample Method:

Solid-Stem Auger

Direct Push - Expendable Well Tip

Perforated Injection Tool



6899 Pecos Street, Unit C
Denver, Colorado 80221

CLIENT: Kerr-McGee Oil and Gas Onshore, LP

DRILLED BY: Brandon LeVasseur

PROJECT MANAGER: Robert Cornez

DRILLING CONTRACTOR: Tasman Geosciences, Inc.

DRILLING EQUIPMENT: AMS PowerProbe

DRILL BIT SIZE (INCHES): 2-3/8"

DATE STARTED - COMPLETED: 10/2/2015

TOTAL WELL DEPTH (FT. BGS): 11

DEPTH TO WATER (FT. BGS): 0.78 (11/4/15) ▼

Opatri Unit 63N67W12SESE

BORING / WELL ID: BH02X

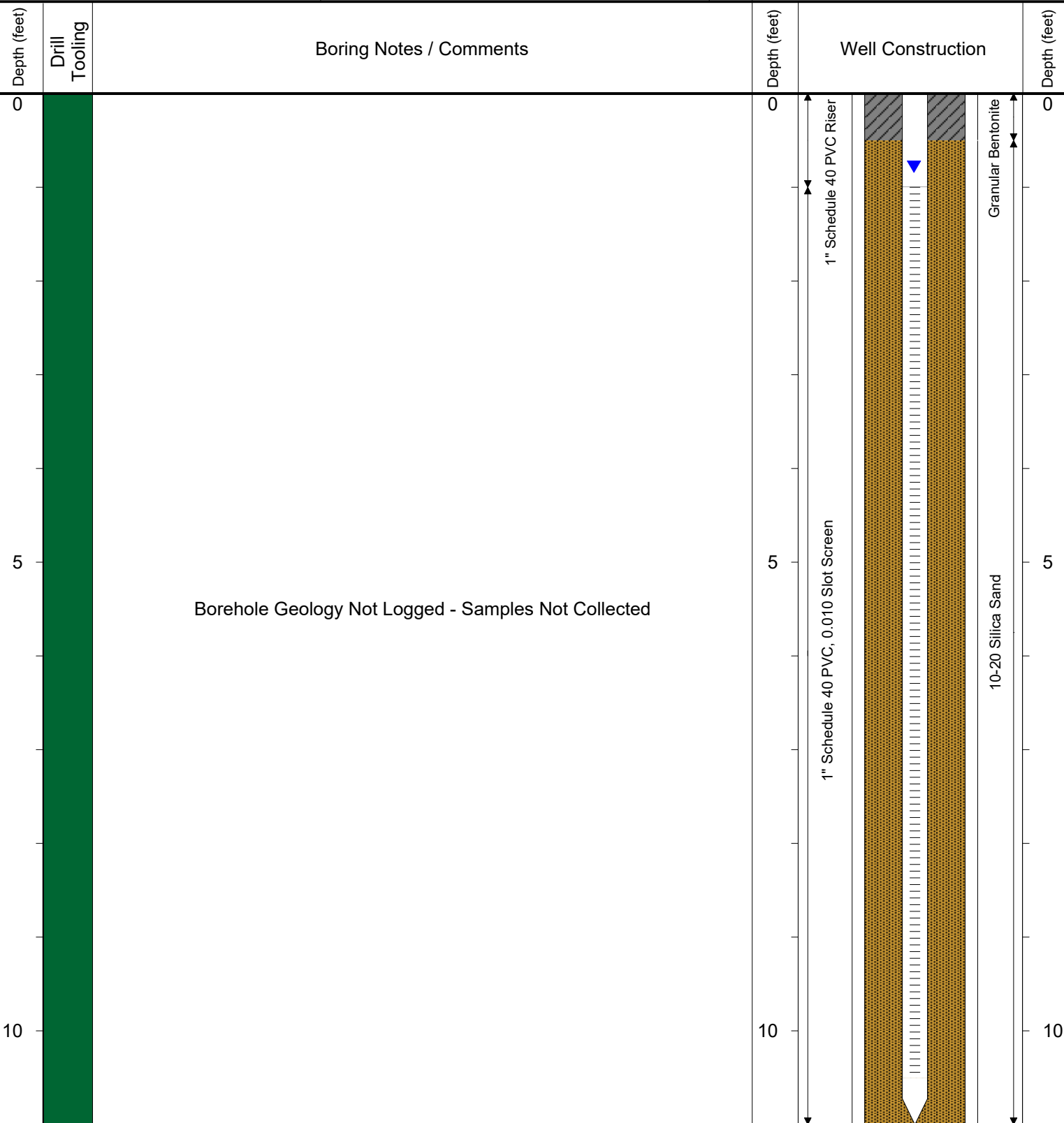
SURFACE COMPLETION: Flush Mount

LATITUDE (NAD 83): 40.235531

LONGITUDE (NAD 83): -104.833887

CASING ELEVATION (FT. AMSL): 4779.87

GROUND ELEVATION (FT. AMSL): 4780.31



Drilling / Sample Method:

Solid-Stem Auger

Direct Push - Expendable Well Tip

Perforated Injection Tool



6899 Pecos Street, Unit C
Denver, Colorado 80221

CLIENT: Kerr-McGee Oil and Gas Onshore, LP

DRILLED BY: Brandon LeVasseur

PROJECT MANAGER: Robert Cornez

DRILLING CONTRACTOR: Tasman Geosciences, Inc.

DRILLING EQUIPMENT: AMS PowerProbe

DRILL BIT SIZE (INCHES): 2-3/8"

DATE STARTED - COMPLETED: 10/2/2015

TOTAL WELL DEPTH (FT. BGS): 11

DEPTH TO WATER (FT. BGS): 0.97 (11/4/15) ▼

Opatril Unit 63N67W12SESE

BORING / WELL ID: BH03X

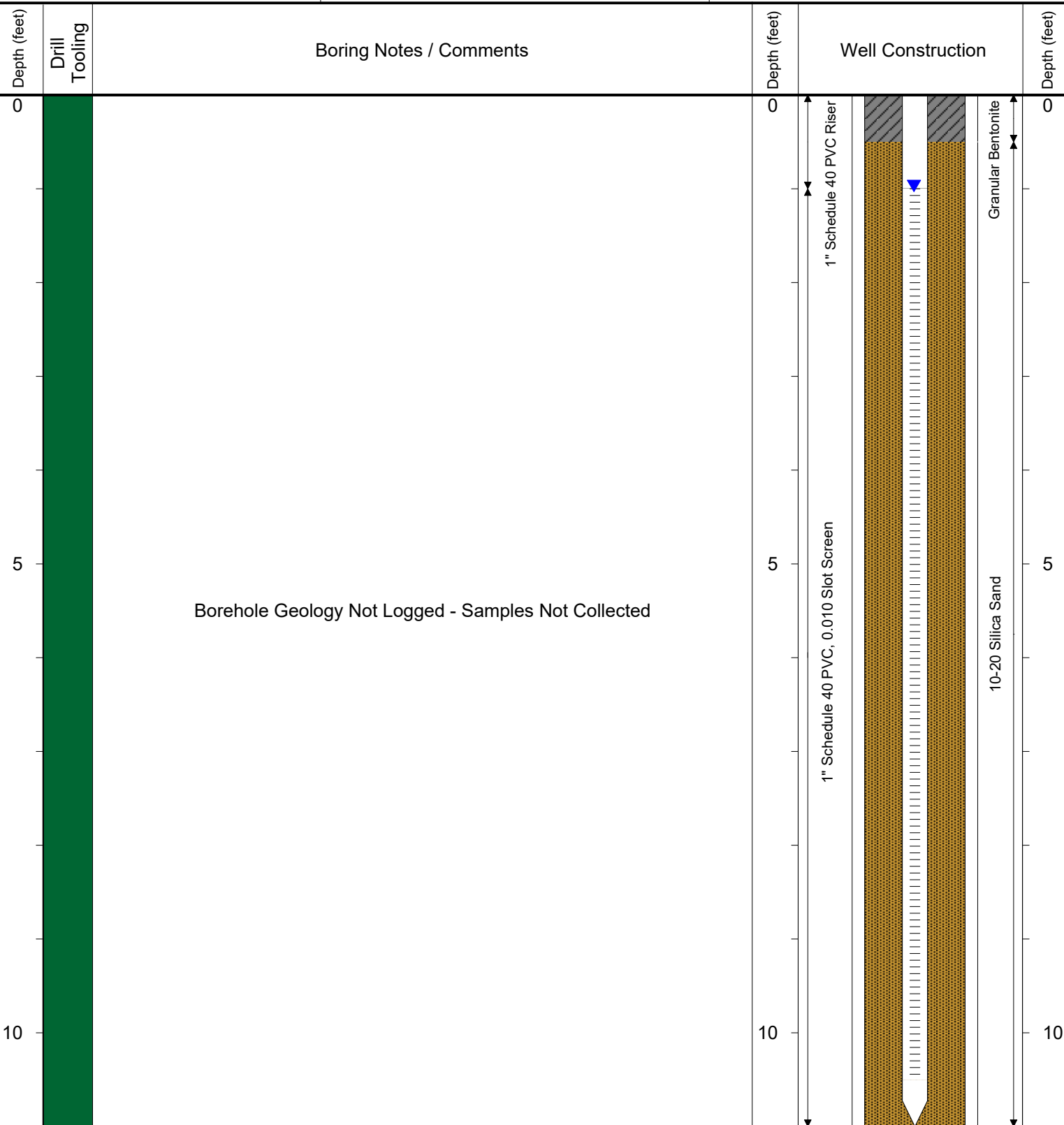
SURFACE COMPLETION: Flush Mount

LATITUDE (NAD 83): 40.235523

LONGITUDE (NAD 83): -104.833827

CASING ELEVATION (FT. AMSL): 4780.11

GROUND ELEVATION (FT. AMSL): 4780.39



Drilling / Sample Method:

Solid-Stem Auger

Direct Push - Expendable Well Tip

Perforated Injection Tool



6899 Pecos Street, Unit C
Denver, Colorado 80221

CLIENT: Kerr-McGee Oil and Gas Onshore, LP

DRILLED BY: Brandon LeVasseur

PROJECT MANAGER: Robert Cornez

DRILLING CONTRACTOR: Tasman Geosciences, Inc.

DRILLING EQUIPMENT: AMS PowerProbe

DRILL BIT SIZE (INCHES): 2-3/8"

DATE STARTED - COMPLETED: 2/18/2016

TOTAL WELL DEPTH (FT. BGS): 11

DEPTH TO WATER (FT. BGS): 3.06 (2/23/2016) ▼

Opatril Unit 63N67W12SESE

BORING / WELL ID: BH05

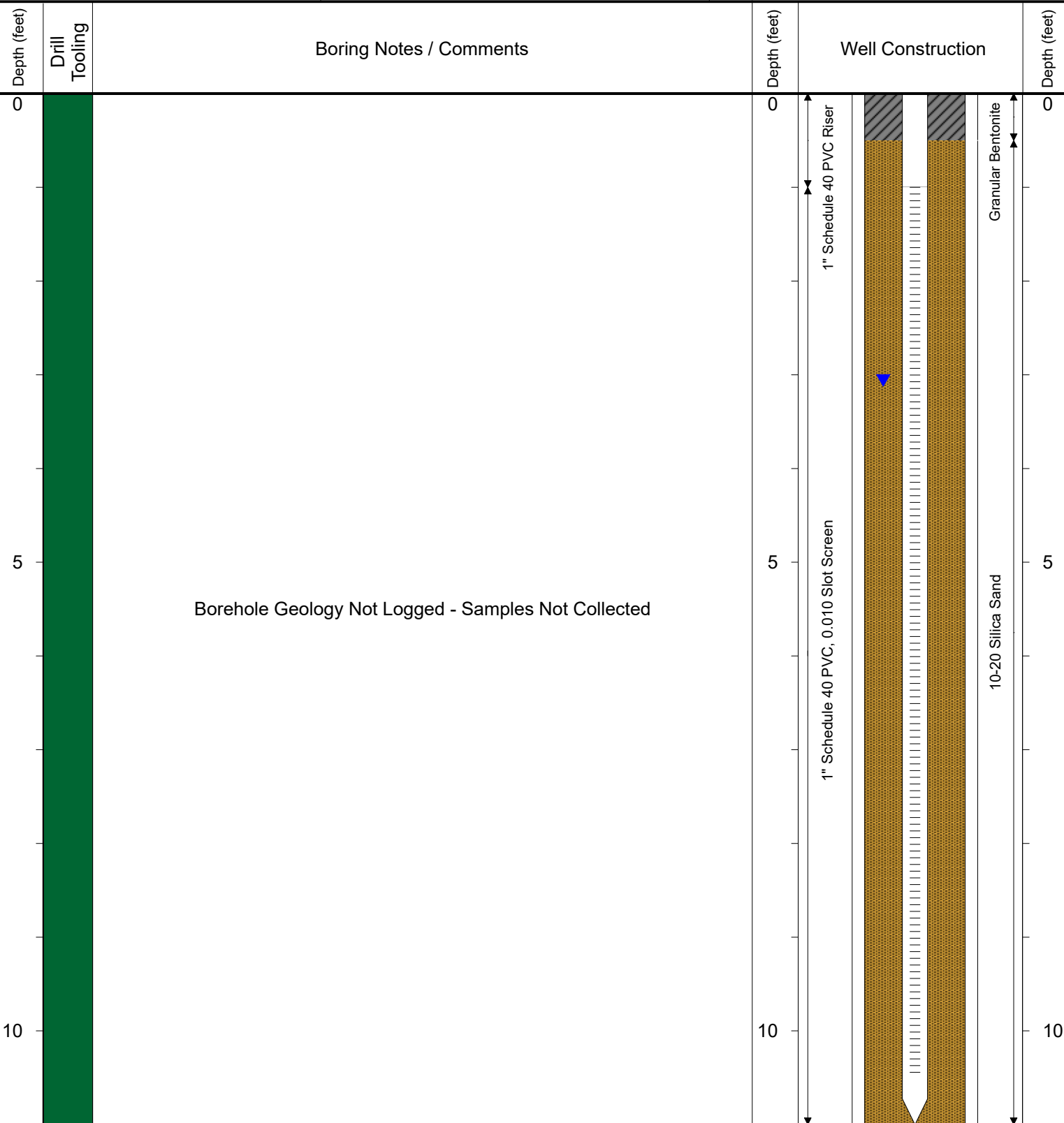
SURFACE COMPLETION: Flush Mount

LATITUDE (NAD 83): 40.235553

LONGITUDE (NAD 83): -104.834036

CASING ELEVATION (FT. AMSL): 4780.64

GROUND ELEVATION (FT. AMSL): 4780.92



Drilling / Sample Method:

Solid-Stem Auger

Perforated Injection Tool

Direct Push - Expendable Well Tip