



DATE: December 7, 2016

DESIGNED BY: D. Cavinder

DRAWN BY: D. Cavinder



Kerr-McGee Oil and Gas Onshore, LP
Opatril Unit 63N67W12SESE
 SESE, Section 12, Township 3 North, Range 67 West
 Weld County, Colorado

Temporary Groundwater
 Monitoring Well Location Map

FIGURE
 1



DATE: March 2, 2016

DESIGNED BY: D. Wade

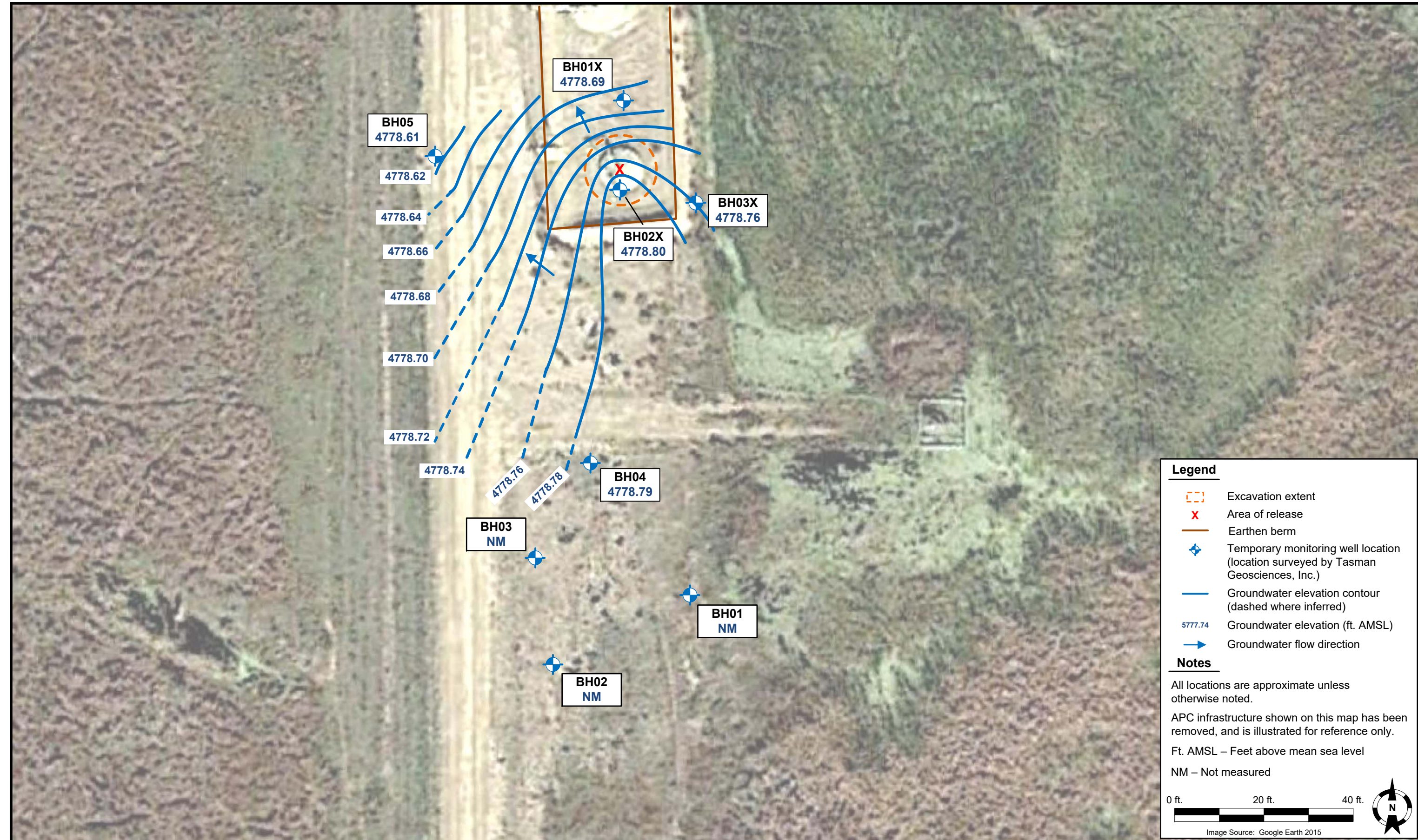
DRAWN BY: D. Arnold



Kerr-McGee Oil and Gas Onshore, LP
Opatril Unit 63N67W12SESE
 SESE, Section 12, Township 3 North, Range 67 West
 Weld County, Colorado

Groundwater Elevation Contour
 Map (02/23/2016)

FIGURE
 2



DATE: October 14, 2016

DESIGNED BY: D. Wade

DRAWN BY: D. Cavinder



Kerr-McGee Oil and Gas Onshore, LP
Opatril Unit 63N67W12SESE
 SESE, Section 12, Township 3 North, Range 67 West
 Weld County, Colorado

Groundwater Elevation Contour
 Map (05/10/2016)

FIGURE
 3



DATE: October 13, 2016

DESIGNED BY: D. Cavinder

DRAWN BY: D. Cavinder



Kerr-McGee Oil and Gas Onshore, LP
Opatril Unit 63N67W12SESE
 SESE, Section 12, Township 3 North, Range 67 West
 Weld County, Colorado

Groundwater Elevation Contour
 Map (08/23/2016)

FIGURE
 4



Legend

- - - Excavation extent
- X Area of release
- Earthen berm
- ◆ Temporary monitoring well location (location surveyed by Tasman Geosciences, Inc.)
- Groundwater elevation contour (dashed where inferred)
- 5777.74 Groundwater elevation (ft. AMSL)
- Groundwater flow direction

Notes

All locations are approximate unless otherwise noted.

APC infrastructure shown on this map has been removed, and is illustrated for reference only.

Ft. AMSL – Feet above mean sea level

NM – Not measured

0 ft. 20 ft. 40 ft.

Image Source: Google Earth 2015

DATE:	December 7, 2016
DESIGNED BY:	D. Cavinder
DRAWN BY:	D. Cavinder



Kerr-McGee Oil and Gas Onshore, LP
Opatril Unit 63N67W12SESE
 SESE, Section 12, Township 3 North, Range 67 West
 Weld County, Colorado

Groundwater Elevation Contour
 Map (11/15/2016)