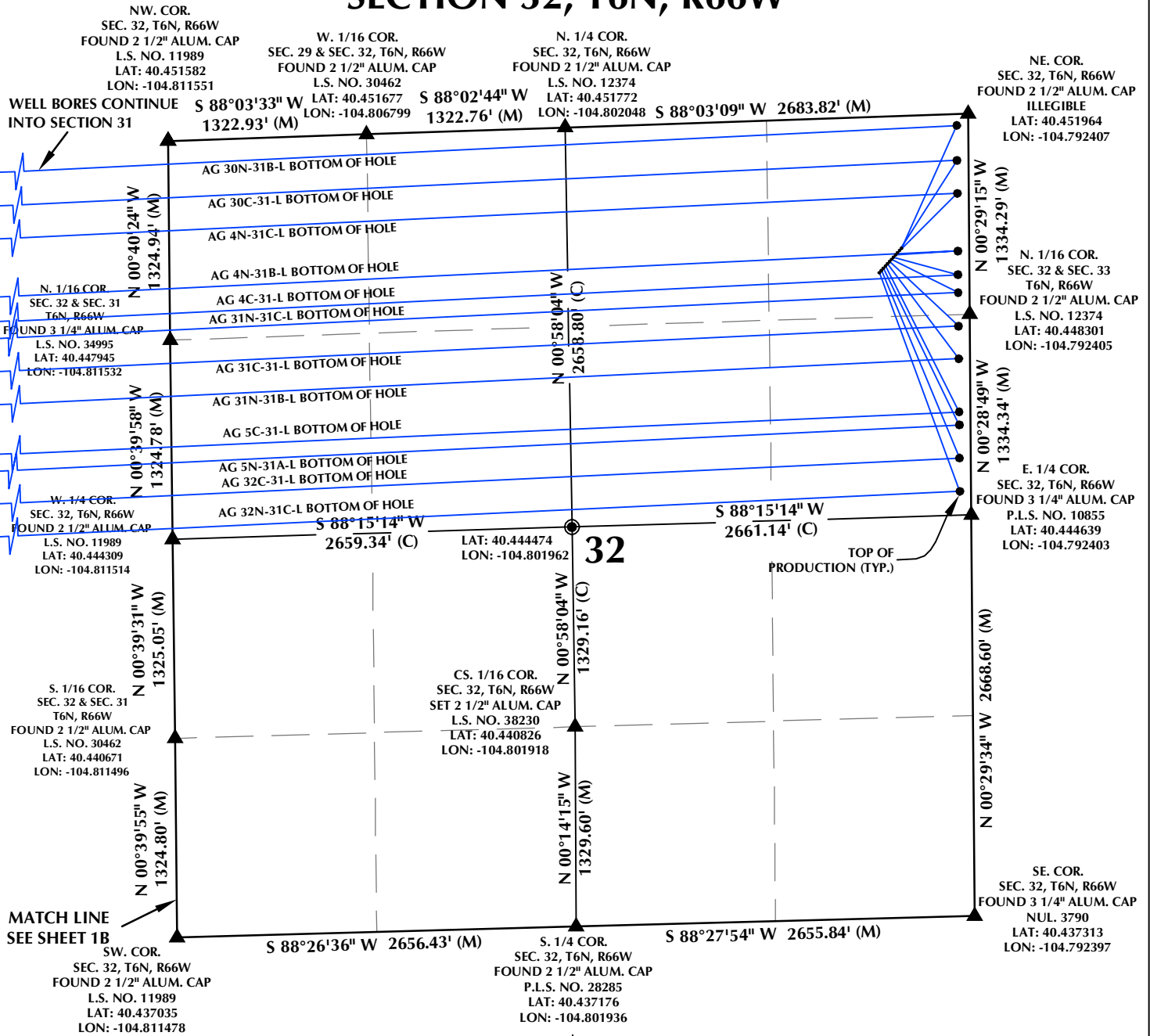
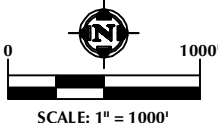


# SECTION 32, T6N, R66W



## NOTES:

- ▲ INDICATES SECTION CORNER
- INDICATES CALCULATED CORNER
- BASIS OF BEARING DERIVED FROM COLORADO COORDINATE SYSTEM OF 1983 NORTH ZONE.
- ALL MEASURED DISTANCES ARE GRID. COMBINED SCALE FACTOR: .99974032 CALCULATED FROM THE N. 1/4 CORNER OF SECTION 32, T6N, R66W
- WELL FOOTAGES ARE MEASURED AT RIGHT ANGLES TO THE SECTION LINES.



## WELL PAD - AG 26-32

MULTI WELL PLAN  
AG 32N-31C-L, AG 32C-31-L,  
AG 5N-31A-L, AG 5C-31-L,  
AG 31N-31B-L, AG 31C-31-L,  
AG 31N-31C-L, AG 4C-31-L,  
AG 4N-31B-L, AG 4N-31C-L,  
AG 30C-31-L & AG 30N-31B-L  
LOCATED IN SECTIONS 31 & 32  
T6N, R66W, 6TH P.M.  
WELD COUNTY, COLORADO

**SYNERGY**  
RESOURCES CORPORATION  
1625 Broadway, Suite 300  
Denver, Colorado 80202



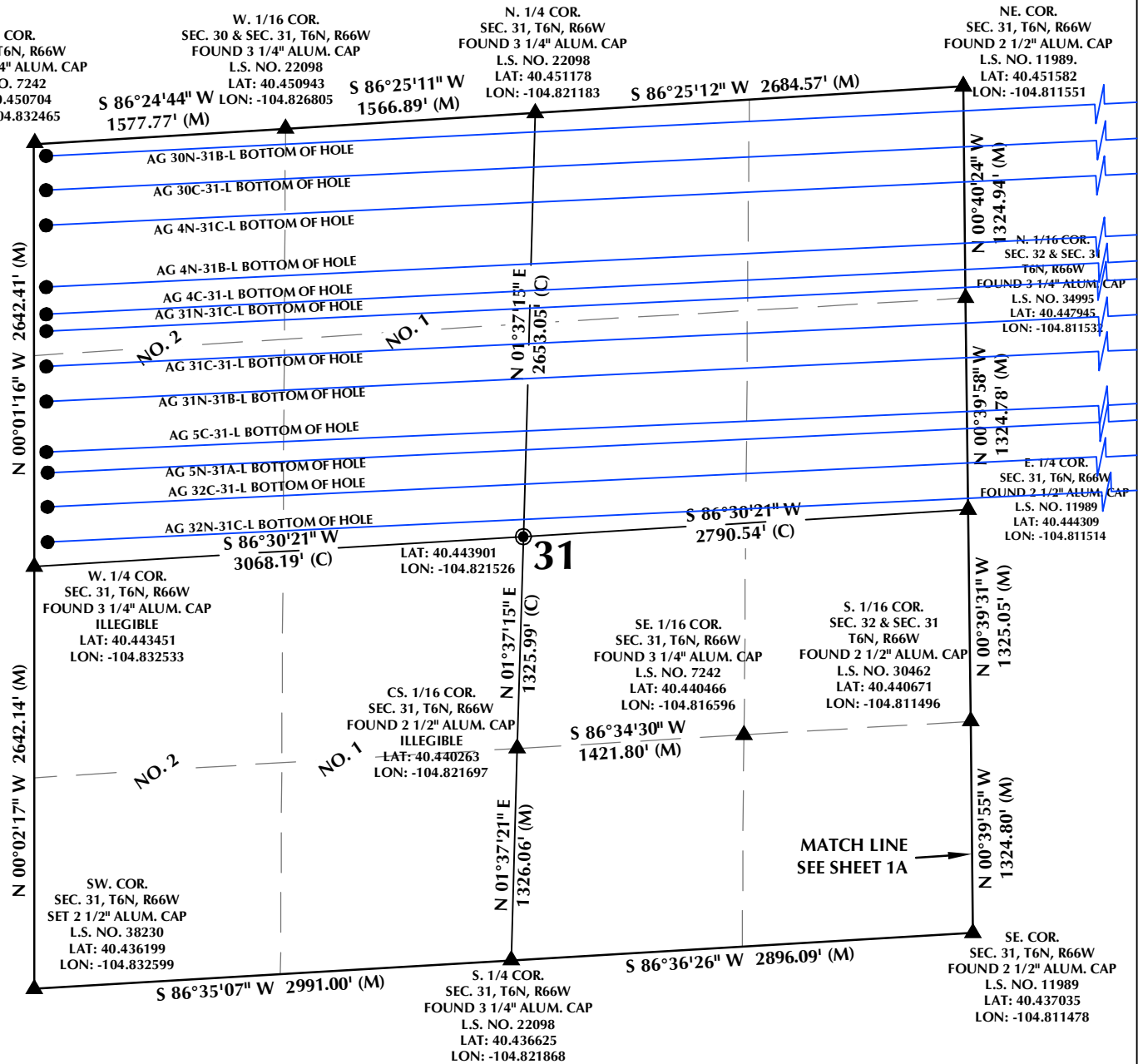
## CONSULTING, LLC

SHERIDAN OFFICE  
1095 Saberton Avenue  
Sheridan, Wyoming 82801  
Phone 307-674-0609

LOVELAND OFFICE  
1635 Foxtrail Drive, Suite 204  
Loveland, Colorado 80538  
Phone 970-776-4331

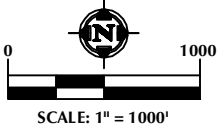
DRAFTED BY:	LMO	CHECKED BY:	JRS	SHEET NO:
DATE DRAFTED:	8/11/16	DATE SURVEYED:	7/25/16	1A
REVISED:	8/18/2016	FILE NAME:	16-76	1A OF 3

# SECTION 31, T6N, R66W



## NOTES:

- ▲ INDICATES SECTION CORNER
- INDICATES CALCULATED CORNER
- BASIS OF BEARING DERIVED FROM COLORADO COORDINATE SYSTEM OF 1983 NORTH ZONE.
- ALL MEASURED DISTANCES ARE GRID. COMBINED SCALE FACTOR: .99974032 CALCULATED FROM THE N. 1/4 CORNER OF SECTION 32, T6N, R66W
- WELL FOOTAGES ARE MEASURED AT RIGHT ANGLES TO THE SECTION LINES.
- NO. 1 & NO. 2 AS SHOWN HEREON ARE GOVERNMENT LOTS 1 & 2 PER THE ORIGINAL GLO SURVEY



## WELL PAD - AG 26-32

MULTI WELL PLAN  
AG 32N-31C-L, AG 32C-31-L,  
AG 5N-31A-L, AG 5C-31-L,  
AG 31N-31B-L, AG 31C-31-L,  
AG 31N-31C-L, AG 4C-31-L,  
AG 4N-31B-L, AG 4N-31C-L,  
AG 30C-31-L & AG 30N-31B-L  
LOCATED IN SECTIONS 31 & 32  
T6N, R66W, 6TH P.M.  
WELD COUNTY, COLORADO

**SYNERGY**  
RESOURCES CORPORATION  
1625 Broadway, Suite 300  
Denver, Colorado 80202



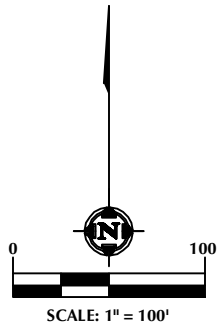
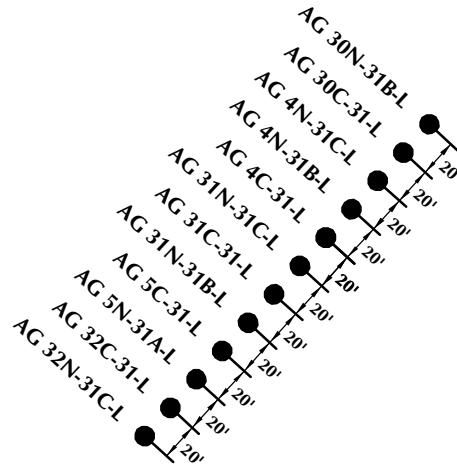
## CONSULTING, LLC

SHERIDAN OFFICE  
1095 Saberton Avenue  
Sheridan, Wyoming 82801  
Phone 307-674-0609

LOVELAND OFFICE  
1635 Foxtrail Drive, Suite 204  
Loveland, Colorado 80538  
Phone 970-776-4331

DRAFTED BY:	LMO	CHECKED BY:	JRS	SHEET NO:
DATE DRAFTED:	8/11/16	DATE SURVEYED:	7/25/16	<b>1B</b>
REVISED:	8/18/2016	FILE NAME:	16-76	1B OF 3

# AG 26-32



## NOTES:

1. ▲ INDICATES SECTION CORNER
2. ● INDICATES CALCULATED CORNER
3. BASIS OF BEARING DERIVED FROM COLORADO COORDINATE SYSTEM OF 1983 NORTH ZONE.
4. ALL MEASURED DISTANCES ARE GRID.  
COMBINED SCALE FACTOR: .99974032 CALCULATED FROM THE N. 1/4 CORNER OF SECTION 32, T6N, R66W
5. WELL FOOTAGES ARE MEASURED AT RIGHT ANGLES TO THE SECTION LINES.

## WELL PAD - AG 26-32

MULTI WELL PLAN  
 AG 32N-31C-L, AG 32C-31-L,  
 AG 5N-31A-L, AG 5C-31-L,  
 AG 31N-31B-L, AG 31C-31-L,  
 AG 31N-31C-L, AG 4C-31-L,  
 AG 4N-31B-L, AG 4N-31C-L,  
 AG 30C-31-L & AG 30N-31B-L  
 LOCATED IN SECTIONS 31 & 32  
 T6N, R66W, 6TH P.M.  
 WELD COUNTY, COLORADO

 **SYNERGY**  
 RESOURCES CORPORATION  
 1625 Broadway, Suite 300  
 Denver, Colorado 80202



## CONSULTING, LLC

SHERIDAN OFFICE  
 1095 Saberton Avenue  
 Sheridan, Wyoming 82801  
 Phone 307-674-0609

LOVELAND OFFICE  
 1635 Foxtrail Drive, Suite 204  
 Loveland, Colorado 80538  
 Phone 970-776-4331

DRAFTED BY:	LMO	CHECKED BY:	JRS	SHEET NO:
DATE DRAFTED:	8/11/16	DATE SURVEYED:	7/25/16	2
REVISED:	8/18/2016	FILE NAME:	16-76	2 OF 3

# AG 26-32

## WELL NOTES:

AG 32N-31C-L

SURFACE:

1037' FNL & 599' FEL

LATITUDE= 40.449075°

LONGITUDE= -104.794558°

TOP OF PRODUCTION:

2509' FNL & 75' FEL

LATITUDE= 40.445069°

LONGITUDE= -104.792673°

BOTTOM HOLE:

2489' FNL & 75' FWL

LATITUDE= 40.443870°

LONGITUDE= -104.832260°

FORMATION:

NIOBRARA

AG 32C-31-L

SURFACE:

1022' FNL & 585' FEL

LATITUDE= 40.449115°

LONGITUDE= -104.794509°

TOP OF PRODUCTION:

2288' FNL & 75' FEL SENE

LATITUDE= 40.445676°

LONGITUDE= -104.792673°

BOTTOM HOLE:

2269' FNL & 75' FWL

LATITUDE= 40.444475°

LONGITUDE= -104.832254°

FORMATION:

CODELL

AG 5N-31A-L

SURFACE:

1008' FNL & 572' FEL

LATITUDE= 40.449155°

LONGITUDE= -104.794460°

TOP OF PRODUCTION:

2068' FNL & 75' FEL

LATITUDE= 40.446280°

LONGITUDE= -104.792673°

BOTTOM HOLE:

2055' FNL & 75' FWL

LATITUDE= 40.445064°

LONGITUDE= -104.832249°

FORMATION:

NIOBRARA

AG 5C-31-L

SURFACE:

994' FNL & 558' FEL

LATITUDE= 40.449196°

LONGITUDE= -104.794411°

TOP OF PRODUCTION:

1981' FNL & 75' FEL

LATITUDE= 40.446519°

LONGITUDE= -104.792673°

BOTTOM HOLE:

1926' FNL & 75' FWL

LATITUDE= 40.445419°

LONGITUDE= -104.832246°

FORMATION:

CODELL

AG 31N-31B-L

SURFACE:

979' FNL & 545' FEL

LATITUDE= 40.449236°

LONGITUDE= -104.794362°

TOP OF PRODUCTION:

1627' FNL & 75' FEL

LATITUDE= 40.447491°

LONGITUDE= -104.792674°

BOTTOM HOLE:

1611' FNL & 75' FWL

LATITUDE= 40.446285°

LONGITUDE= -104.832237°

FORMATION:

NIOBRARA

AG 31C-31-L

SURFACE:

965' FNL & 531' FEL

LATITUDE= 40.449276°

LONGITUDE= -104.794313°

TOP OF PRODUCTION:

1410' FNL & 75' FEL

LATITUDE= 40.448087°

LONGITUDE= -104.792674°

BOTTOM HOLE:

1392' FNL & 75' FWL

LATITUDE= 40.446887°

LONGITUDE= -104.832232°

FORMATION:

CODELL

AG 31N-31C-L

SURFACE:

951' FNL & 517' FEL

LATITUDE= 40.449316°

LONGITUDE= -104.794264°

TOP OF PRODUCTION:

1187' FNL & 75' FEL

LATITUDE= 40.448699°

LONGITUDE= -104.792674°

BOTTOM HOLE:

1171' FNL & 75' FWL

LATITUDE= 40.447495°

LONGITUDE= -104.832226°

FORMATION:

NIOBRARA

AG 4C-31-L

SURFACE:

936' FNL & 504' FEL

LATITUDE= 40.449357°

LONGITUDE= -104.794216°

TOP OF PRODUCTION:

1068' FNL & 75' FEL

LATITUDE= 40.449026°

LONGITUDE= -104.792675°

BOTTOM HOLE:

1066' FNL & 75' FWL

LATITUDE= 40.447784°

LONGITUDE= -104.832223°

FORMATION:

CODELL

AG 4N-31B-L

SURFACE:

922' FNL & 490' FEL

LATITUDE= 40.449397°

LONGITUDE= -104.794167°

TOP OF PRODUCTION:

910' FNL & 75' FEL

LATITUDE= 40.449460°

LONGITUDE= -104.792675°

BOTTOM HOLE:

896' FNL & 75' FWL

LATITUDE= 40.448251°

LONGITUDE= -104.832219°

FORMATION:

NIOBRARA

AG 4N-31C-L

SURFACE:

908' FNL & 477' FEL

LATITUDE= 40.449437°

LONGITUDE= -104.794118°

TOP OF PRODUCTION:

526' FNL & 75' FEL

LATITUDE= 40.450514°

LONGITUDE= -104.792676°

BOTTOM HOLE:

510' FNL & 75' FWL

LATITUDE= 40.449313°

LONGITUDE= -104.832209°

FORMATION:

NIOBRARA

AG 30C-31-L

SURFACE:

894' FNL & 463' FEL

LATITUDE= 40.449477°

LONGITUDE= -104.794069°

TOP OF PRODUCTION:

307' FNL & 75' FEL

LATITUDE= 40.451116°

LONGITUDE= -104.792676°

BOTTOM HOLE:

290' FNL & 75' FWL

LATITUDE= 40.449918°

LONGITUDE= -104.832203°

FORMATION:

CODELL

AG 30N-31B-L

SURFACE:

879' FNL & 449' FEL

LATITUDE= 40.449517°

LONGITUDE= -104.794020°

TOP OF PRODUCTION:

75' FNL & 75' FEL

LATITUDE= 40.451753°

LONGITUDE= -104.792677°

BOTTOM HOLE:

75' FNL & 75' FWL

LATITUDE= 40.450509°

LONGITUDE= -104.832198°

FORMATION:

NIOBRARA

## WELL PAD - AG 26-32

MULTI WELL PLAN  
AG 32N-31C-L, AG 32C-31-L,  
AG 5N-31A-L, AG 5C-31-L,  
AG 31N-31B-L, AG 31C-31-L,  
AG 31N-31C-L, AG 4C-31-L,  
AG 4N-31B-L, AG 4N-31C-L,  
AG 30C-31-L & AG 30N-31B-L  
LOCATED IN SECTIONS 31 & 32  
T6N, R66W, 6TH P.M.  
WELD COUNTY, COLORADO



1625 Broadway, Suite 300  
Denver, Colorado 80202



## CONSULTING, LLC

SHERIDAN OFFICE  
1095 Saberton Avenue  
Sheridan, Wyoming 82801  
Phone 307-674-0609

LOVELAND OFFICE  
1635 Foxtrail Drive, Suite 204  
Loveland, Colorado 80538  
Phone 970-776-4331

DRAFTED BY:	LMO	CHECKED BY:	JRS	SHEET NO:
DATE DRAFTED:	8/11/16	DATE SURVEYED:	7/25/16	3
REVISED:	8/18/2016	FILE NAME:	16-76	3 OF 3