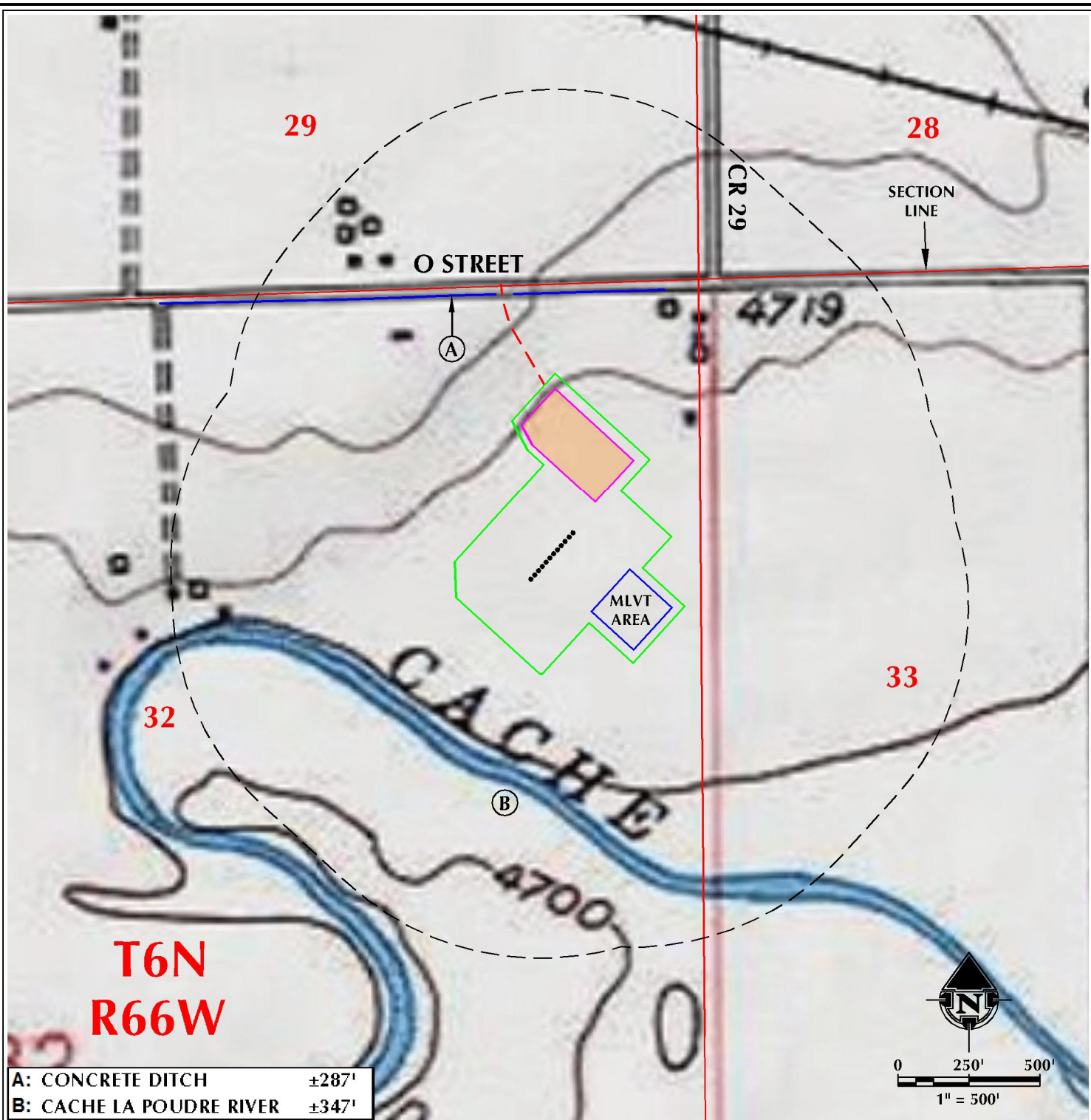


K:\SYNERGY RESOURCES\2016_76_Ag_T6N_R66W_SEC_32\DWG\GREENLEY SITE_MINE.dwg, 8/19/2016 12:30:25 PM, shown



A: CONCRETE DITCH ±287'
B: CACHE LA POUDRE RIVER ±347'

LEGEND

- PROPOSED WELL
- ACCESS ROAD
- DITCH/CANAL/DRAINAGE
- DISTURBANCE AREA
- PROPOSED FACILITY
- 1000' DISTURBANCE BUFFER

*ALL DISTANCES MEASURED FROM EDGE OF DISTURBANCE.

- ROAD - IMPROVED - EXISTING
- == ROAD - PRIMITIVE - EXISTING
- ROAD - HIGHWAY - EXISTING

PAD - AG 26-32

HYDROLOGY MAP
AG 32N-31C-L, AG 32C-31-L, AG 5N-31A-L,
AG 5C-31-L, AG 31N-31B-L, AG 31C-31-L,
AG 31N-31C-L, AG 4C-31-L, AG 4N-31B-L,
AG 4N-31C-L, AG 30C-31-L & AG 30N-31B-L
LOCATED IN SECTION 32, T6N, R66W, 6TH P.M.
WELD COUNTY, COLORADO

SYNERGY
RESOURCES CORPORATION
1625 Broadway, Suite 300
Denver, Colorado 80202



CONSULTING, LLC

SHERIDAN OFFICE 1095 Saberton Avenue
Sheridan, Wyoming 82801
Phone 307-674-0609
LOVELAND OFFICE 1635 Foxtrail Drive, Suite 204
Loveland, Colorado 80538
Phone 970-776-4331

SCALE:	1" = 500ft	NAD83 CO-Nft
DRAWN:	SRS	DATE: 8/10/16
REVISED:	SRS	DATE: 8/18/16