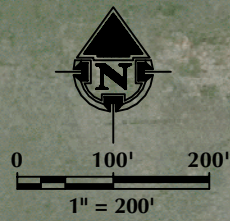


MEASURED FROM NEAREST PRODUCTION FACILITY EQUIPMENT OR PROPOSED WELL	
BUILDING:	±455'
BUILDING UNIT:	±503'
PUBLIC ROAD*:	±402'
ABOVE GROUND UTILITY:	±384'
RAILROAD:	±1388'
PROPERTY LINE:	±110'
HIGH OCCUPANCY BUILDING UNIT:	±4647'
DESIGNATED OUTSIDE ACTIVITY AREA:	±2985'
*Measured from edge of County Road	



NOTES:
 1. EQUIPMENT PLACEMENT IS APPROXIMATE AND SUBJECT TO MINOR MODIFICATION DUE TO SPECIFIC CIRCUMSTANCES.

DATA SOURCES:
 - AERIAL COURTESY OF ESRI, INC.
 - WATER WELLS COURTESY OF COLORADO DIVISION OF WATER RESOURCES

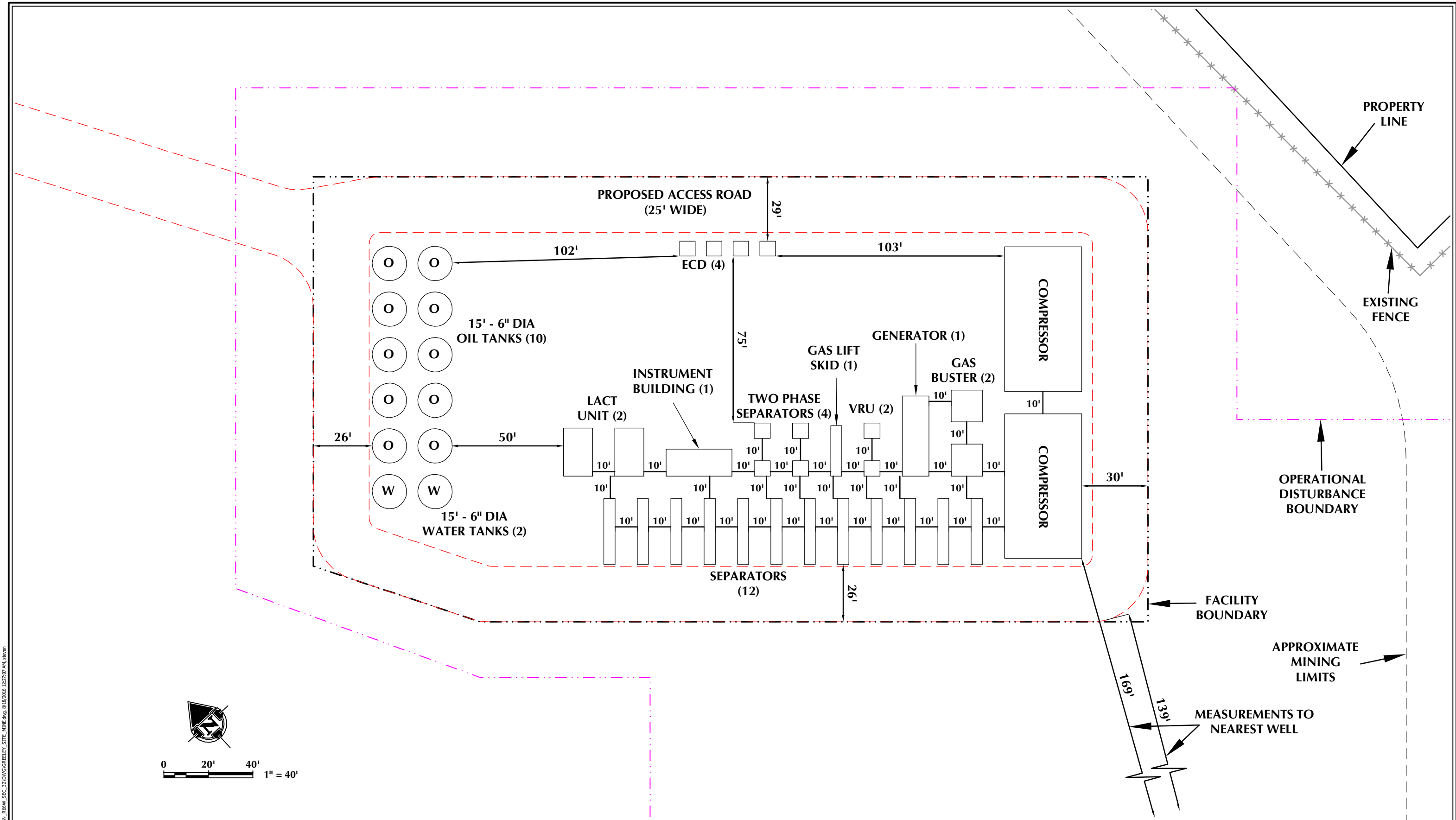
609 CONSULTING, LLC
 LOVELAND OFFICE
 1635 Foxtrail Drive, Suite 204
 Loveland, Colorado 80538
 Phone 970-776-4331
 SHERIDAN OFFICE
 1095 Saberton Avenue
 Sheridan, Wyoming 82801
 Phone 307-674-0609

SYNERGY RESOURCES CORPORATION
 1625 Broadway, Suite 300
 Denver, Colorado 80202

SCALE: 1" = 200'
 DATE SURVEYED: 7/25/16
 DATE: 8/11/16
 DRAFTER: SRS
 REVISED: 9/1/16

FACILITY LAYOUT AERIAL (A)
 AG 26-32
 LOCATED IN SECTION 32, T6N, R66W, 6TH P.M.
 WELD COUNTY, COLORADO

K:\SYNERGY RESOURCES\2016_75_Ag_T6N_R66W_SEC_32\DWG\GRIELEY_STE_MINE\Ag_9/1/2016 2:10:24 PM.dwg



K:\SYNERGY RESOURCES\2016_76_AG_T6N_R66W_SEC_32\DWG\GREGLEY_SITE_MINE.AWG_8/18/2016 12:27:07 AM.steven

NOTES:
 1. EQUIPMENT PLACEMENT IS APPROXIMATE AND SUBJECT TO MINOR MODIFICATION DUE TO SPECIFIC CIRCUMSTANCES.

DATA SOURCES:
 - AERIAL COURTESY OF ESRI, INC.
 - WATER WELLS COURTESY OF COLORADO DIVISION OF WATER RESOURCES

609 CONSULTING, LLC
 LOVELAND OFFICE
 1635 Foxtrail Drive, Suite 204
 Loveland, Colorado 80538
 Phone 970-776-4331
 SHERIDAN OFFICE
 1095 Saberton Avenue
 Sheridan, Wyoming 82801
 Phone 307-674-0609

SYNERGY RESOURCES CORPORATION
 1625 Broadway, Suite 300
 Denver, Colorado 80202

SCALE: 1" = 40'
 DATE SURVEYED: 7/25/16
 DATE: 8/3/16
 DRAFTER: SRS
 REVISED: 8/18/16

FACILITY LAYOUT (B)
 AG 26-32
 LOCATED IN SECTION 32, T6N, R66W, 6TH P.M.
 WELD COUNTY, COLORADO