

# **LEGEND:**

 **PROPOSED LOCATION**



## **BONANZA CREEK ENERGY OPERATING COMPANY, LLC**

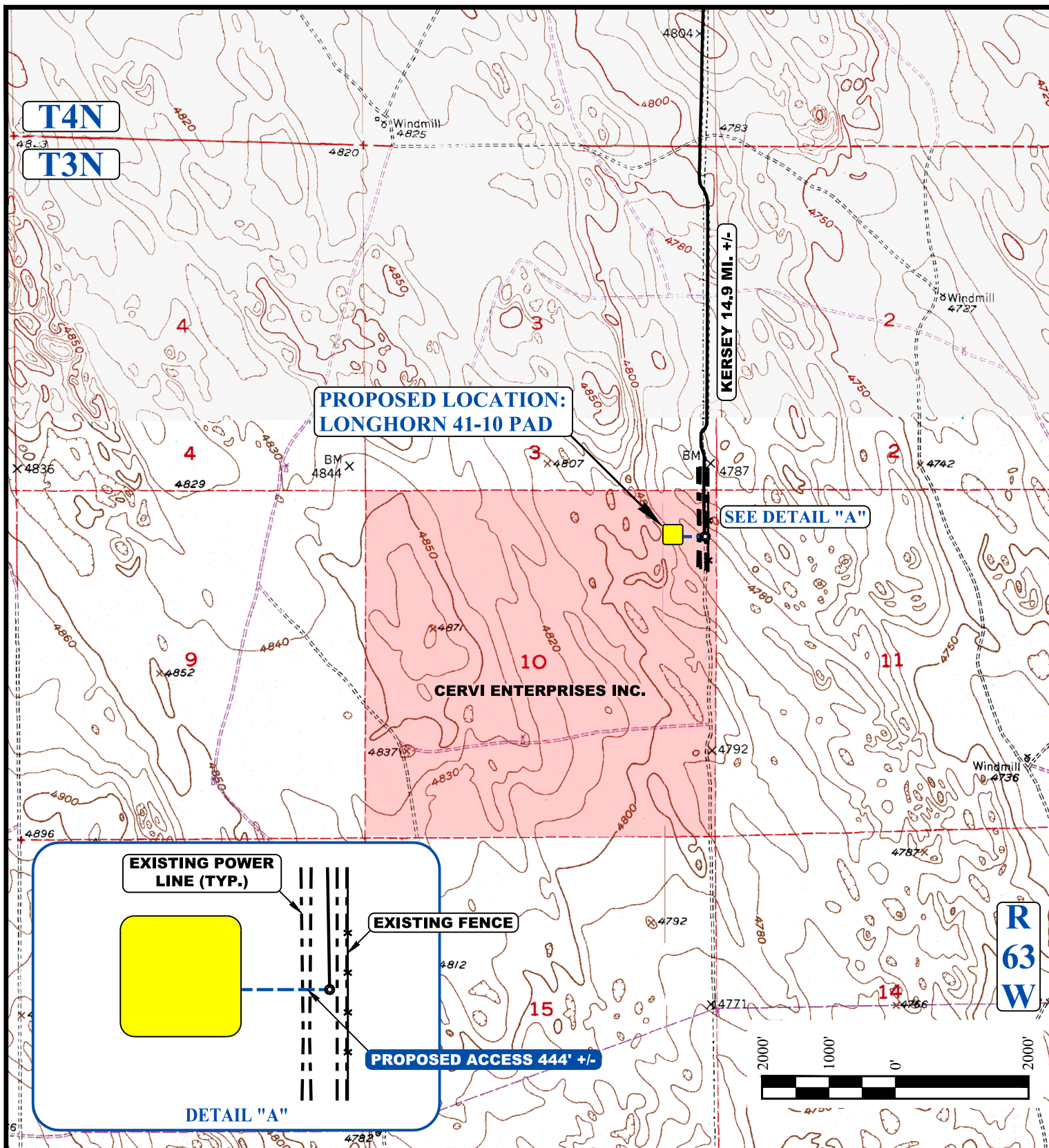
**LONGHORN 41-10 PAD**  
NE 1/4 NE 1/4, SECTION 10, T3N, R63W, 6th P.M.  
WELD COUNTY, COLORADO

SURVEYED BY	C.M., D.N.	11-21-16	SCALE
DRAWN BY	L.C.S.	11-22-16	1 : 100,000
<b>ACCESS ROAD MAP</b>			<b>TOPO A</b>



**UELS, LLC**  
Corporate Office \* 85 South 200 East  
Vernal, UT 84078 \* (435) 789-1017





NOTE: PARCEL DATA SHOWN HAS BEEN OBTAINED FROM VARIOUS SOURCES AND SHOULD BE USED FOR MAPPING, GRAPHIC AND PLANNING PURPOSES ONLY. NO WARRANTY IS MADE BY UINTAH ENGINEERING AND LAND SURVEYING (UELS) FOR ACCURACY OF THE PARCEL DATA.

#### LEGEND:

- EXISTING ROAD
- - - - - PROPOSED ROAD
- - - - - EXISTING POWER LINE
- x x x x EXISTING FENCE



**UELS, LLC**  
Corporate Office \* 85 South 200 East  
Vernal, UT 84078 \* (435) 789-1017



#### BONANZA CREEK ENERGY OPERATING COMPANY, LLC

**LONGHORN 41-10 PAD**  
NE 1/4 NE 1/4, SECTION 10, T3N, R63W, 6th P.M.  
WELD COUNTY, COLORADO

SURVEYED BY	C.M., D.N.	11-21-16	SCALE
DRAWN BY	L.C.S.	11-22-16	1 : 24,000
<b>ACCESS ROAD MAP</b>			<b>TOPO B</b>