

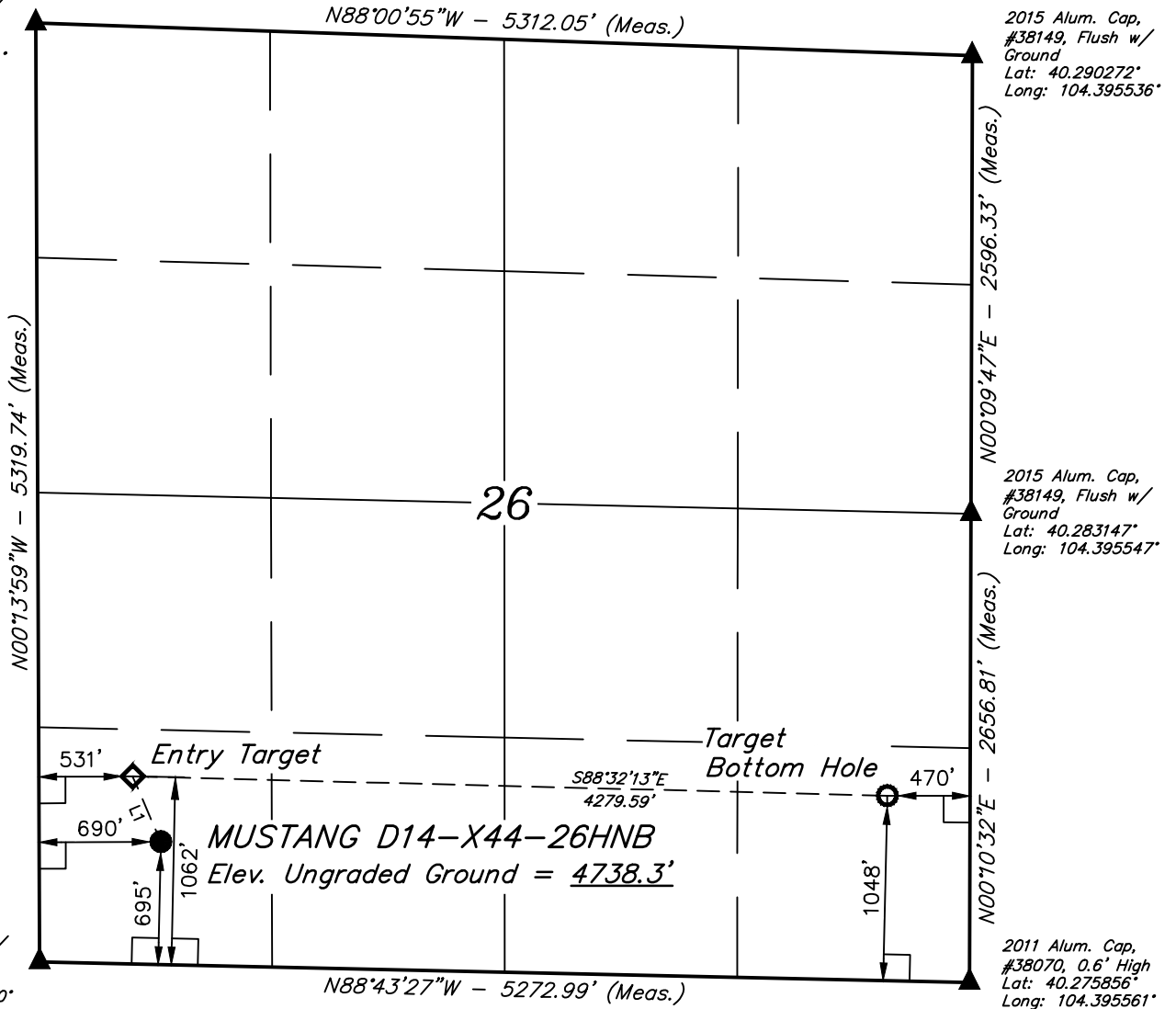
# T4N, R63W, 6th P.M.

## LEGEND:

- └ = 90° SYMBOL
- = PROPOSED WELLHEAD.
- ◇ = ENTRY TARGET.
- = TARGET BOTTOM HOLE.
- ▲ = SECTION CORNERS LOCATED. (NAD 83)

2007 Alum. Cap,  
#38019, Flush w/  
Ground  
Lat: 40.290753°  
Long: 104.414561°

2015 Alum. Cap,  
#38149, Flush w/  
Ground  
Lat: 40.290272°  
Long: 104.395536°



2007 Alum. Cap,  
#38019, Flush w/  
Ground  
Lat: 40.276156°  
Long: 104.414450°

2015 Alum. Cap,  
#38149, Flush w/  
Ground  
Lat: 40.283147°  
Long: 104.395547°

2011 Alum. Cap,  
#38070, 0.6' High  
Lat: 40.275856°  
Long: 104.395561°



<b>NAD 83 (SURFACE LOCATION)</b>
LATITUDE = 40°16'40.89" (40.278025)
LONGITUDE = 104°24'43.18" (104.411994)
<b>NAD 83 (ENTRY TARGET)</b>
LATITUDE = 40°16'44.55" (40.279042)
LONGITUDE = 104°24'45.25" (104.412569)
<b>NAD 83 (TARGET BOTTOM HOLE)</b>
LATITUDE = 40°16'43.53" (40.278758)
LONGITUDE = 104°23'50.07" (104.397242)

PDOP = 1.4

LINE TABLE		
LINE	DIRECTION	LENGTH
L1	N23°23'41"W	403.47'

CERTIFICATION

THIS IS TO CERTIFY THAT THE ABOVE PLAT WAS PREPARED FROM FIELD NOTES OF ACTUAL SURVEYS MADE BY ME OR UNDER MY SUPERVISION, AND THAT THE SAME ARE TRUE AND CORRECT TO THE BEST OF MY KNOWLEDGE AND BELIEF.

*Jared Christopher*

REGISTERED LAND SURVEYOR  
REGISTRATION NO. 28285  
STATE OF COLORADO

2016-16

**BASIS OF BEARINGS**  
BASIS OF BEARINGS IS A G.P.S. OBSERVATION

**BASIS OF ELEVATION**  
SPOT ELEVATION LOCATED AT THE NORTHEAST CORNER OF SECTION 24, T5N, R62W, 6th P.M. TAKEN FROM THE POINT OF ROCKS, QUADRANGLE, COLORADO, WELD COUNTY, 7.5 MINUTE QUAD (TOPOGRAPHIC MAP) PUBLISHED BY THE UNITED STATES DEPARTMENT OF THE INTERIOR, GEOLOGICAL SURVEY. SAID ELEVATION IS MARKED AS BEING 4530 FEET.



**UELS, LLC**  
Corporate Office \* 85 South 200 East  
Vernal, UT 84078 \* (435) 789-1017



## BONANZA CREEK ENERGY OPERATING COMPANY, LLC

**MUSTANG D14-X44-26HNB**  
SW 1/4 SW 1/4, SECTION 26, T4N, R63W, 6th P.M.  
WELD COUNTY, COLORADO

SURVEYED BY	JARED CHRISTOPHER, G.W.	09-16-16	SCALE
DRAWN BY	M.F.D.	11-21-16	1" = 1000'

## WELL LOCATION PLAT