

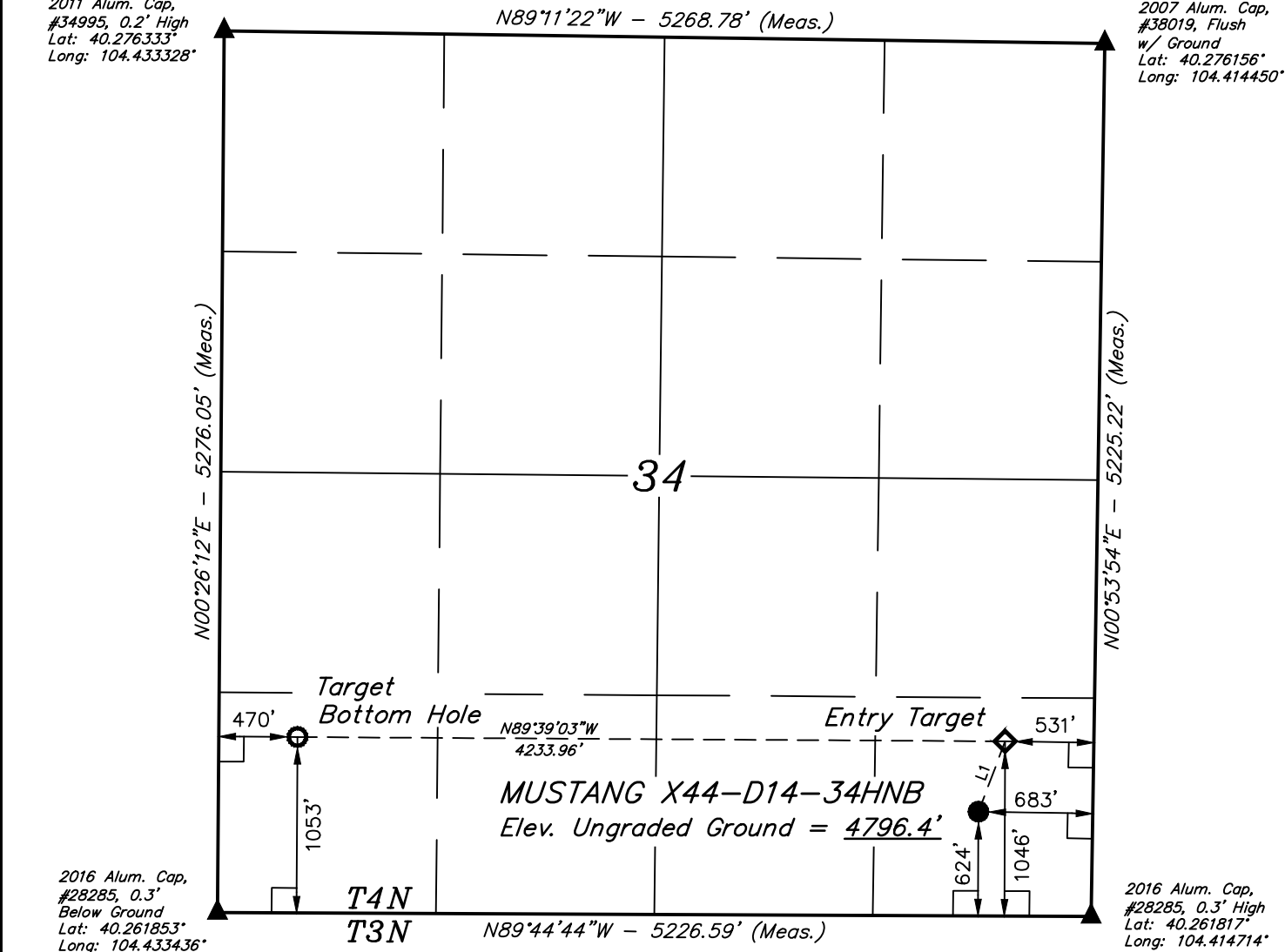
**LEGEND:**

- L = 90° SYMBOL  
 ● = PROPOSED WELLHEAD.  
 ◇ = ENTRY TARGET.  
 ○ = TARGET BOTTOM HOLE.  
 ▲ = SECTION CORNERS LOCATED. (NAD 83)

**T4N, R63W, 6th P.M.**

2011 Alum. Cap,  
#34995, 0.2' High  
Lat: 40.276333°  
Long: 104.433328°

2007 Alum. Cap,  
#38019, Flush  
w/ Ground  
Lat: 40.276156°  
Long: 104.414450°



NAD 83 (SURFACE LOCATION)
LATITUDE = 40°15'48.72" (40.263533)
LONGITUDE = 104°25'01.67" (104.417131)
NAD 83 (ENTRY TARGET)
LATITUDE = 40°15'52.89" (40.264692)
LONGITUDE = 104°24'59.63" (104.416564)
NAD 83 (TARGET BOTTOM HOLE)
LATITUDE = 40°15'53.07" (40.264742)
LONGITUDE = 104°25'54.23" (104.431731)

PDOP = 1.4

**LINE TABLE**

LINE	DIRECTION	LENGTH
L1	N20°40'28"E	450.55'

**CERTIFICATION**

THIS IS TO CERTIFY THAT THE ABOVE PLAT WAS PREPARED FROM FIELD NOTES OF ACTUAL SURVEYS MADE IN MY PRESENCE UNDER MY SUPERVISION, AND THAT THE SAME ARE TRUE AND CORRECT TO THE BEST OF MY KNOWLEDGE AND BELIEF.

REGISTERED LAND SURVEYOR  
REGISTRATION NO. 28285  
STATE OF COLORADO

11-25-16

**BASIS OF BEARINGS**

BASIS OF BEARINGS IS A G.P.S. OBSERVATION

**BASIS OF ELEVATION**

SPOT ELEVATION LOCATED AT THE NORTHEAST CORNER OF SECTION 24, T5N, R62W, 6th P.M. TAKEN FROM THE POINT OF ROCKS, QUADRANGLE, COLORADO, WELD COUNTY, 7.5 MINUTE QUAD (TOPOGRAPHIC MAP) PUBLISHED BY THE UNITED STATES DEPARTMENT OF THE INTERIOR, GEOLOGICAL SURVEY. SAID ELEVATION IS MARKED AS BEING 4530 FEET.

**UELS, LLC**

Corporate Office \* 85 South 200 East  
Vernal, UT 84078 \* (435) 789-1017



**BONANZA CREEK ENERGY  
OPERATING COMPANY, LLC**

**MUSTANG X44-D14-34HNB  
SE 1/4 SE 1/4, SECTION 34, T4N, R63W, 6th P.M.  
WELD COUNTY, COLORADO**

SURVEYED BY	DALLAS NIELSEN, C.M.	11-21-16	SCALE
DRAWN BY	M.F.D.	11-25-16	1" = 1000'

**WELL LOCATION PLAT**